

five rings



INNOVATION IN PRACTICE AND PROCESS.

Located in the heart of King's Cross, *Five Rings* reimagines sober nightlife, asking: **what if social participation became active rather than passive?** Inspired by the **Olympic Games** and the site's rich **sporting heritage**, the project transforms the traditional sports bar into a dynamic **social arena** where **competition, teamwork, and movement** drive **interaction**. Skate-halfpipe-inspired pillars and elevated rings **physically represent the highs of achievement**, while the **circular geometry** of the Olympic

logo reinforces ideas of **community** and **togetherness**. Influenced by the Bauhaus character of the German Gymnasium, linear bridges are juxtaposed amongst **dynamic transitional elements**, transporting participants across multiple **levels of play**, with clear circular lifts, elevated stairs, and spiralling ramps. At its core, *Five Rings* maintains an accessible and **inclusive** environment, **representing community instead of alcohol** and replacing intoxication with **movement as the social catalyst**.

GERMAN GYMNASIUM, KING'S CROSS, LONDON.

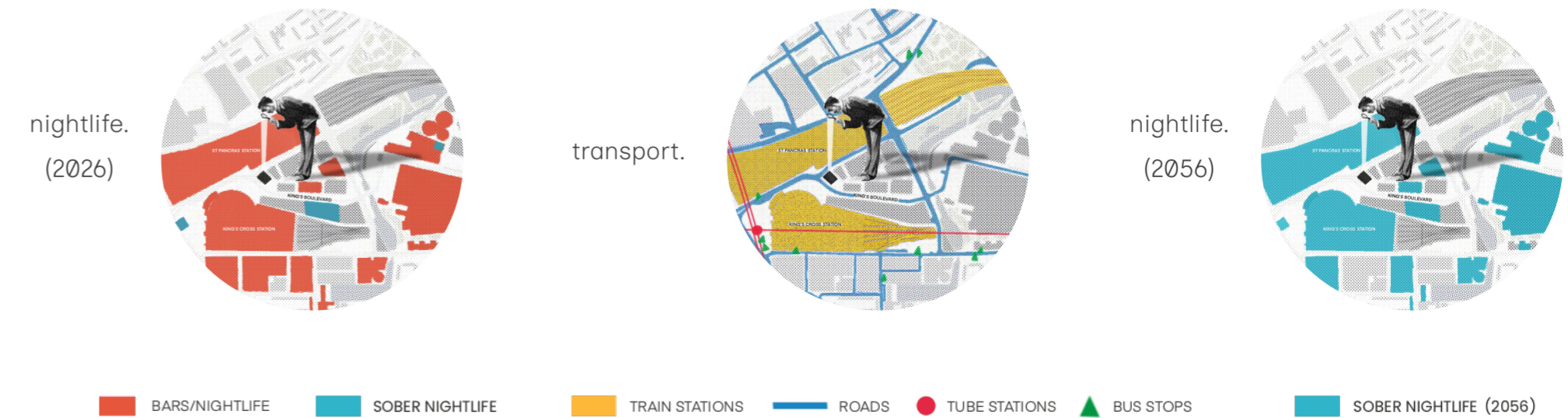
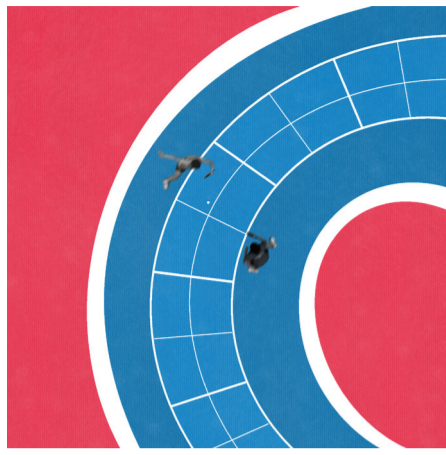
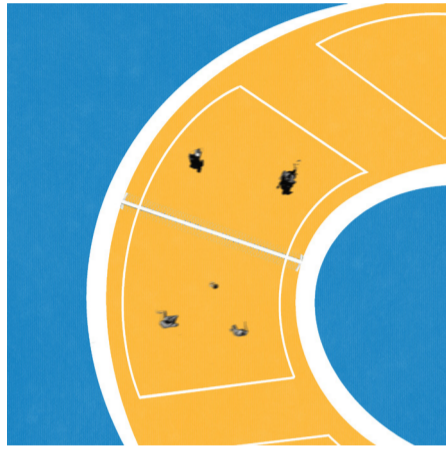


table tennis.
(curved tables)



volleyball.
(curved court & nets)



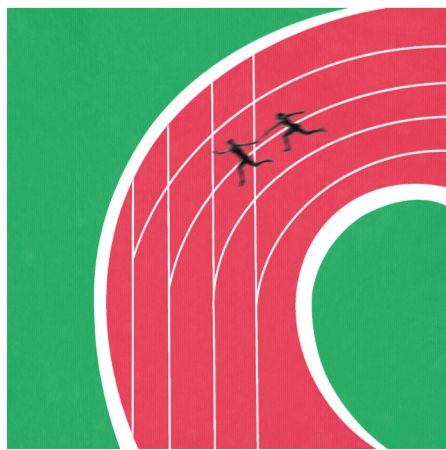
cycling.
(grooved, motorred track)



football.
(dribbling circuit)



athletics.
(curved, treadmill lanes)



THE 'ATHLETES'.

groups of friends wanting unique experience.



corporate teams.



wellness enthusiasts.

sober curious millennials & gen z.



WHY OLYMPICS?

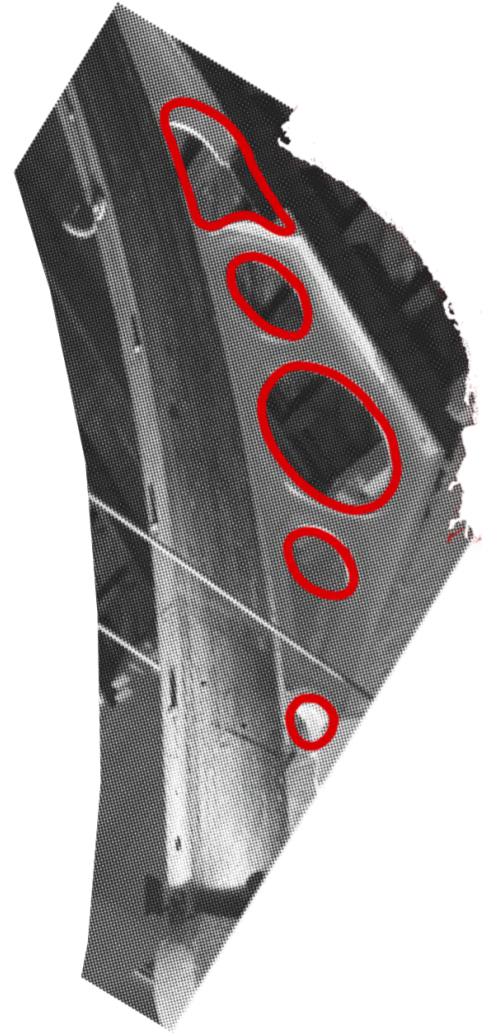
- competition substitutes alcohol's peaks with earned highs.

- inspires people to take part in new sports.

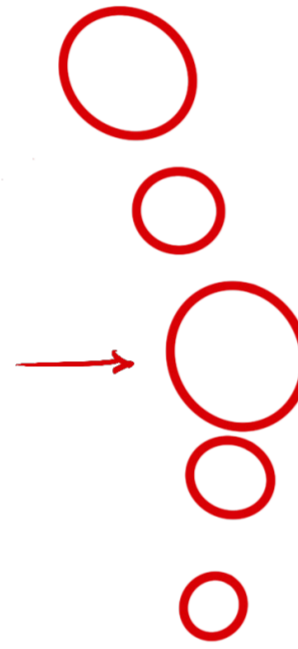
- encourages staying active whilst socialising.



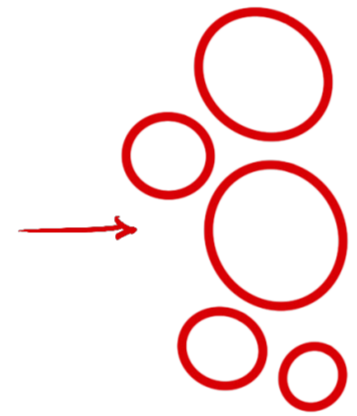
gymnasium beams.



simplified circles.



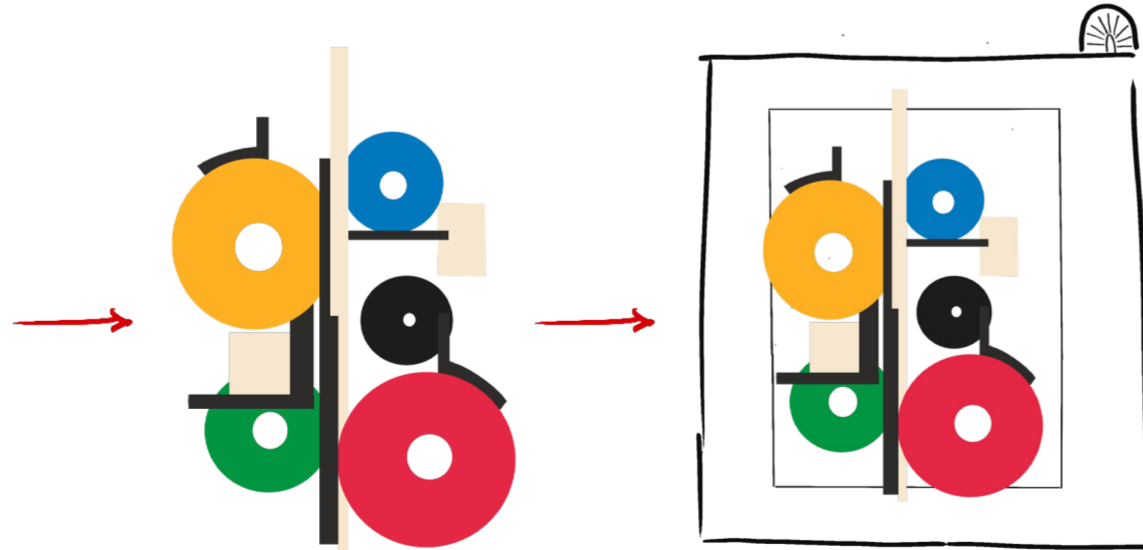
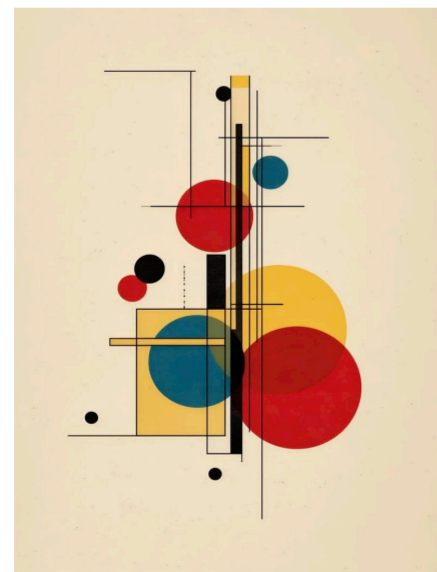
forming close pattern.



Olympic Ring influence.



BAUHAUS INFLUENCE.

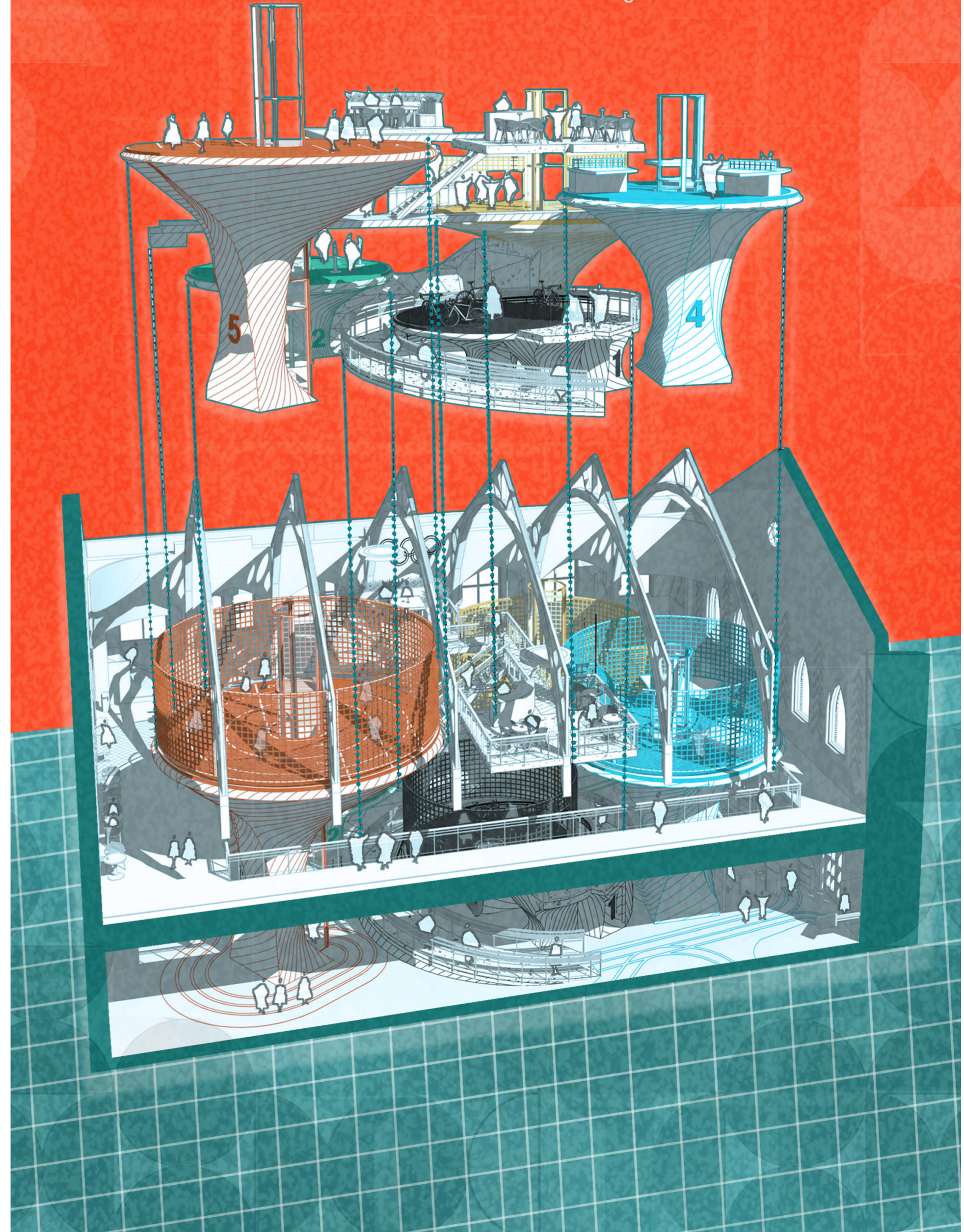


Bauhaus' link is taken from the German heritage of the site, mixed with the building having hosted the 1866 and 1908 indoor olympic games, to create a visually engaging structure. The unique circular layout of the rings reimagines the sports and represents the wackiness of the bar. This is where the German Dada and Bauhaus influences come into play.

the insertion.
of the 'five rings'.

To respect original elements of the grade II listed building, the rings and pillars are positioned at different heights, but also to create visual interest.

The yellow ring rests upon the mezzanine, while the top platforms are reinforced with chains from the original beam hooks.

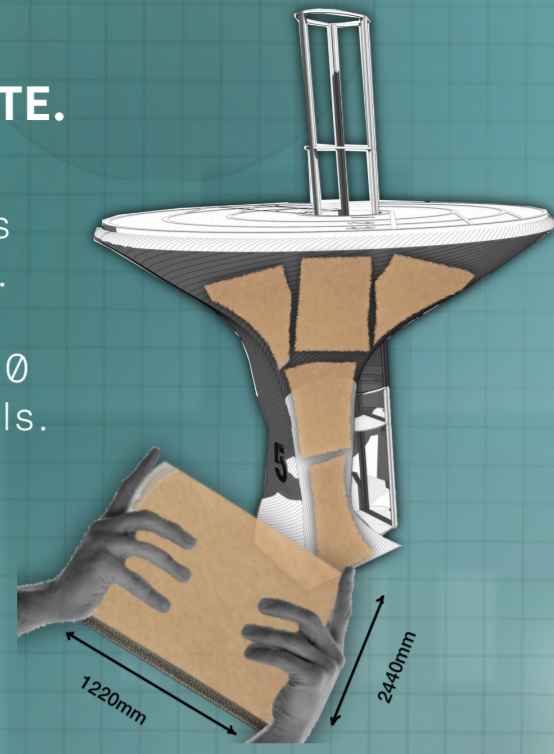


SKATELITE.

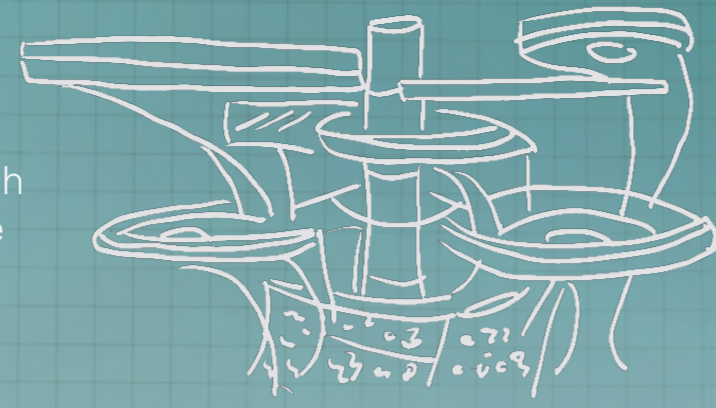
Paris 2024 Olympics skate park material.

Assembled with 1220 x 2440 x 6mm panels.

Applied to pillars to replicate halfpipe swoop and urban atmosphere of modern day Olympics.

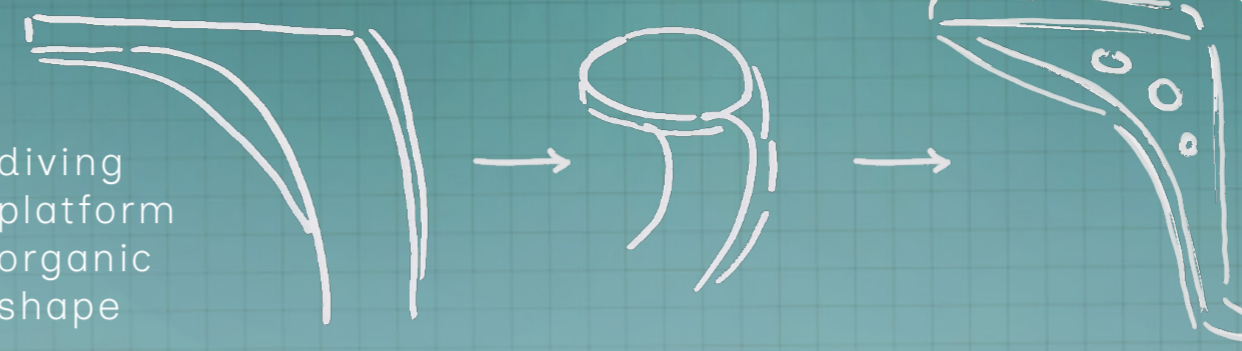


lifts through middle



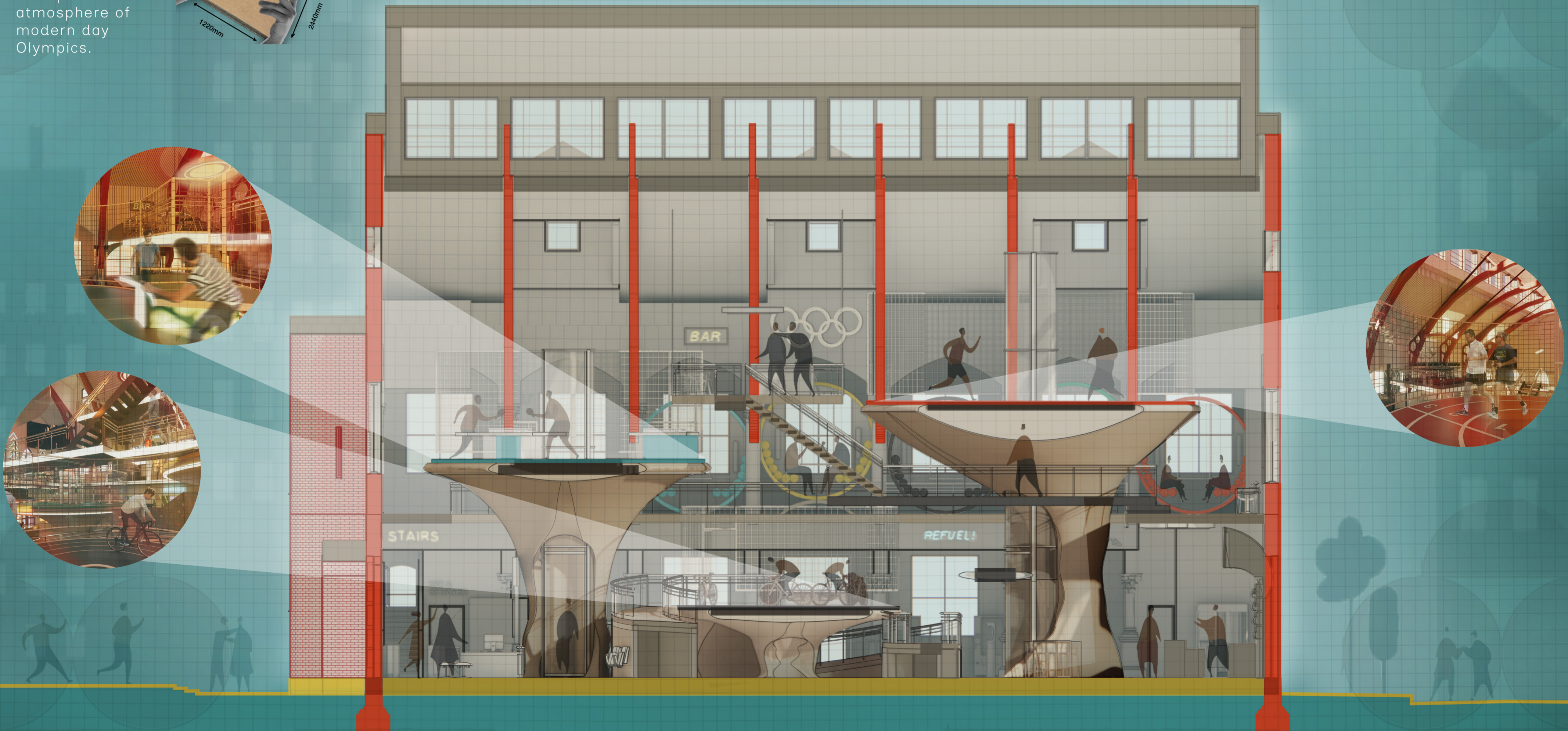
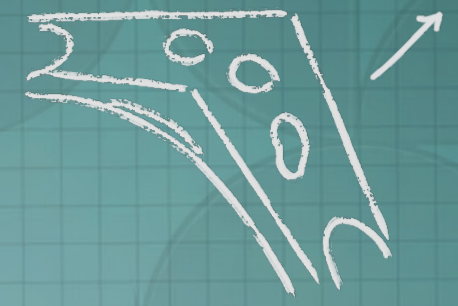
PILLAR PROCESS.

diving platform organic shape



skate-halfpipe swoop

gymnasium beams.



section bb.



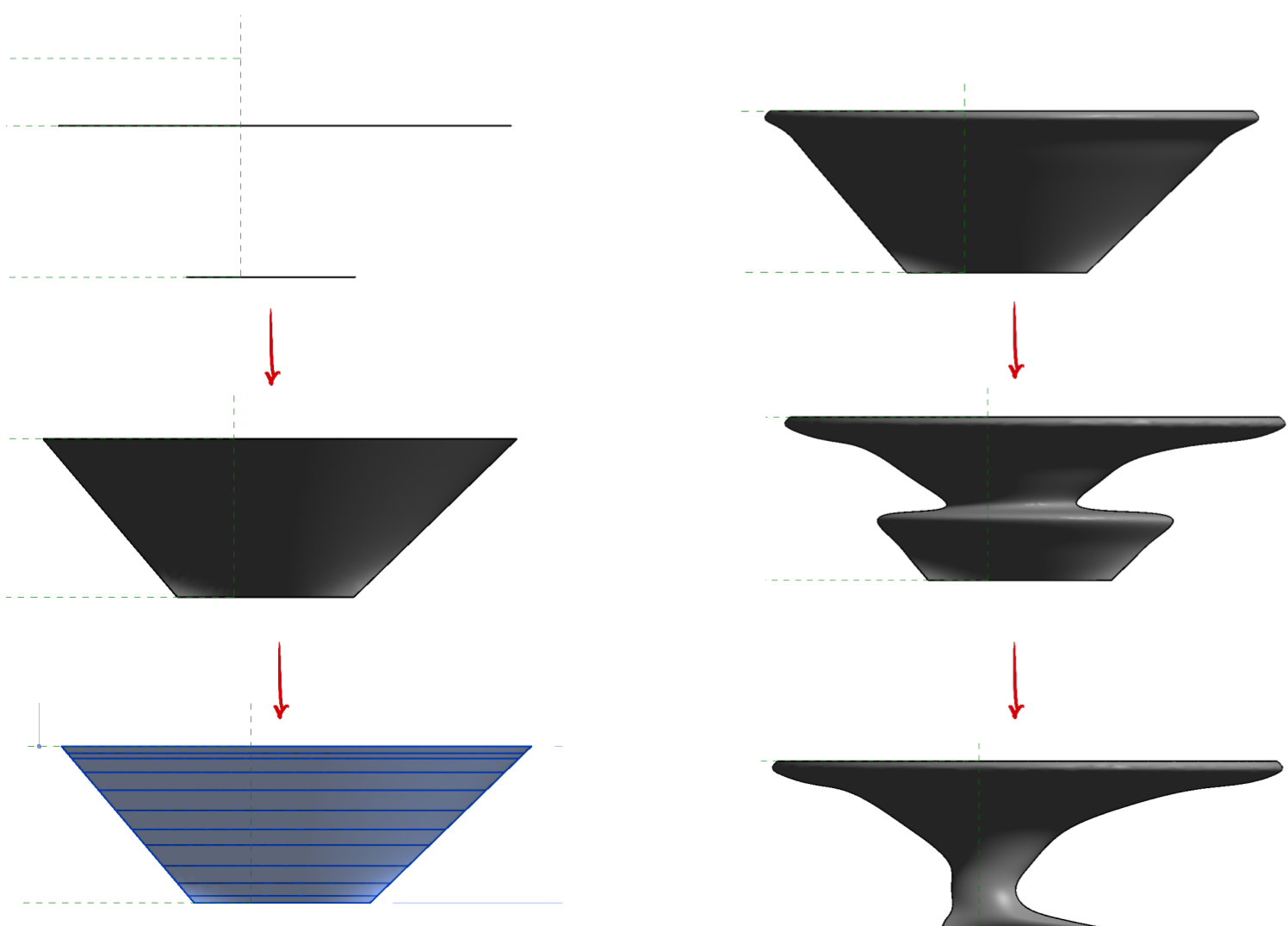


entrance lobby.

Customer enters into enclosed reception entrance, immediately seeing current leaderboard of teams and individuals, collecting their wristband and site map from the desk. Entry to the locker area is through the turnstiles to the left using their wristband.

As well as the lifts and ramp up to the five rings, the ground floor also offers other activities such as bouldering, and pool.

DIGITAL PILLAR PROCESS.

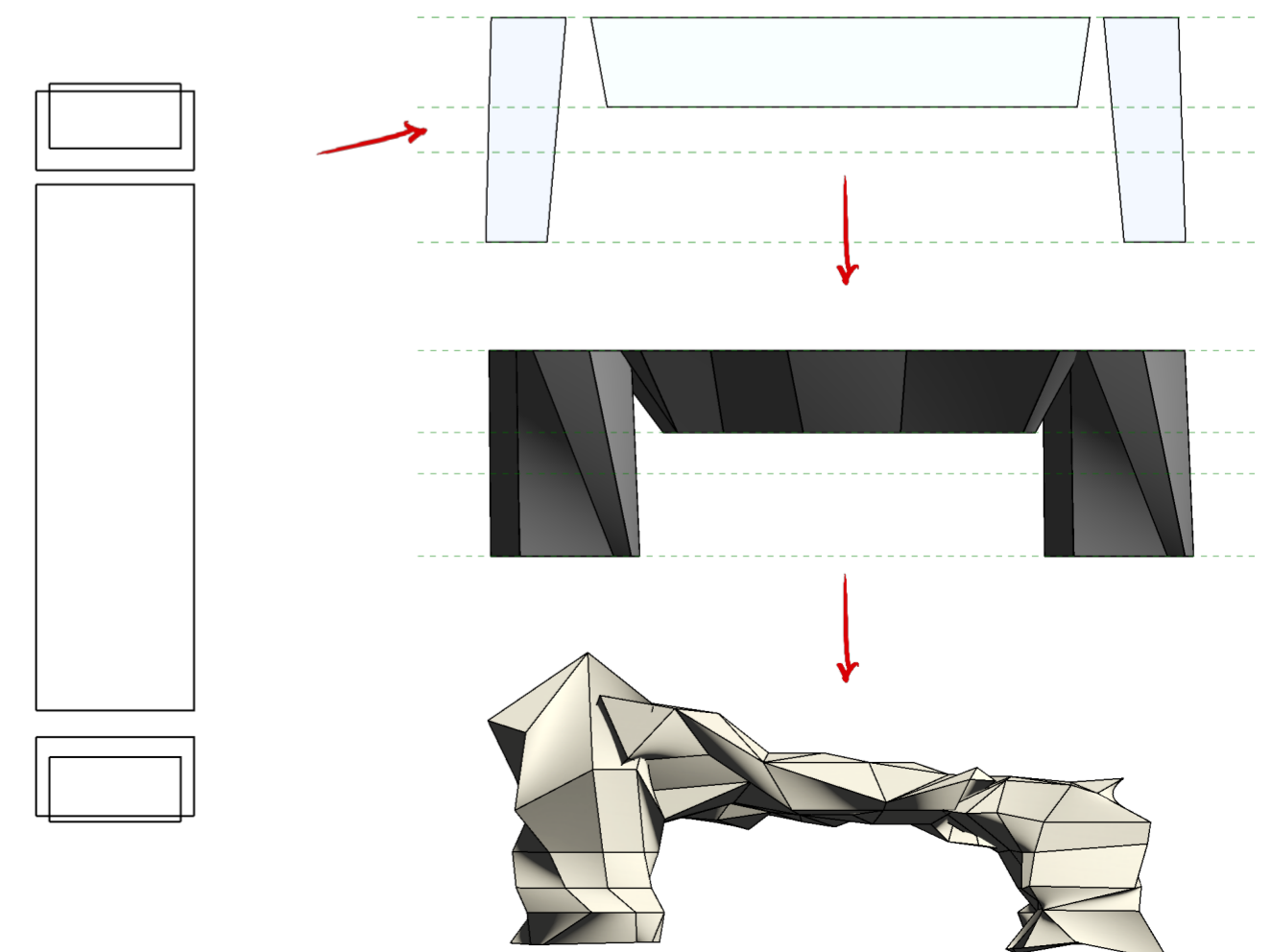


Using Revit massing for both processes, I started by measuring out the shapes to create the outline of the 3D shape I intended. Then adding edges to the 3D I was able to manipulate both masses to create an organic form for the pillars, and an angular form for the bouldering wall.

For the pillars, I then used a cylinder to create a void shape within the centre and an area for the lifts to sit within.

Within Revit and Enscape I then applied my materials, replicating the Skatelite surface, and strips of LED to highlight the structure and act as dynamic light source for bar atmosphere.

DIGITAL BOULDERING WALL PROCESS.





mezzanine level.

The mezzanine offers a variety of seating, including circle booths, picnic tables, bar stools, or low tables, to view the different levels of activity from all different angles. The skate-halfpipe room is off to the left, and a smaller bar is located at the far back left too.

Access to the mezzanine level is available for wheelchairs using the Yellow Ring lift and then down the ramp, or otherwise the turret staircase.

The central bridge holds the stairs that will take you up to the winner's lounge.



CONCEPT SKETCH.

