



THE LOOM

A DRAG CLUB AND A CRAFT CENTRE FOR THE FIBRE ARTS

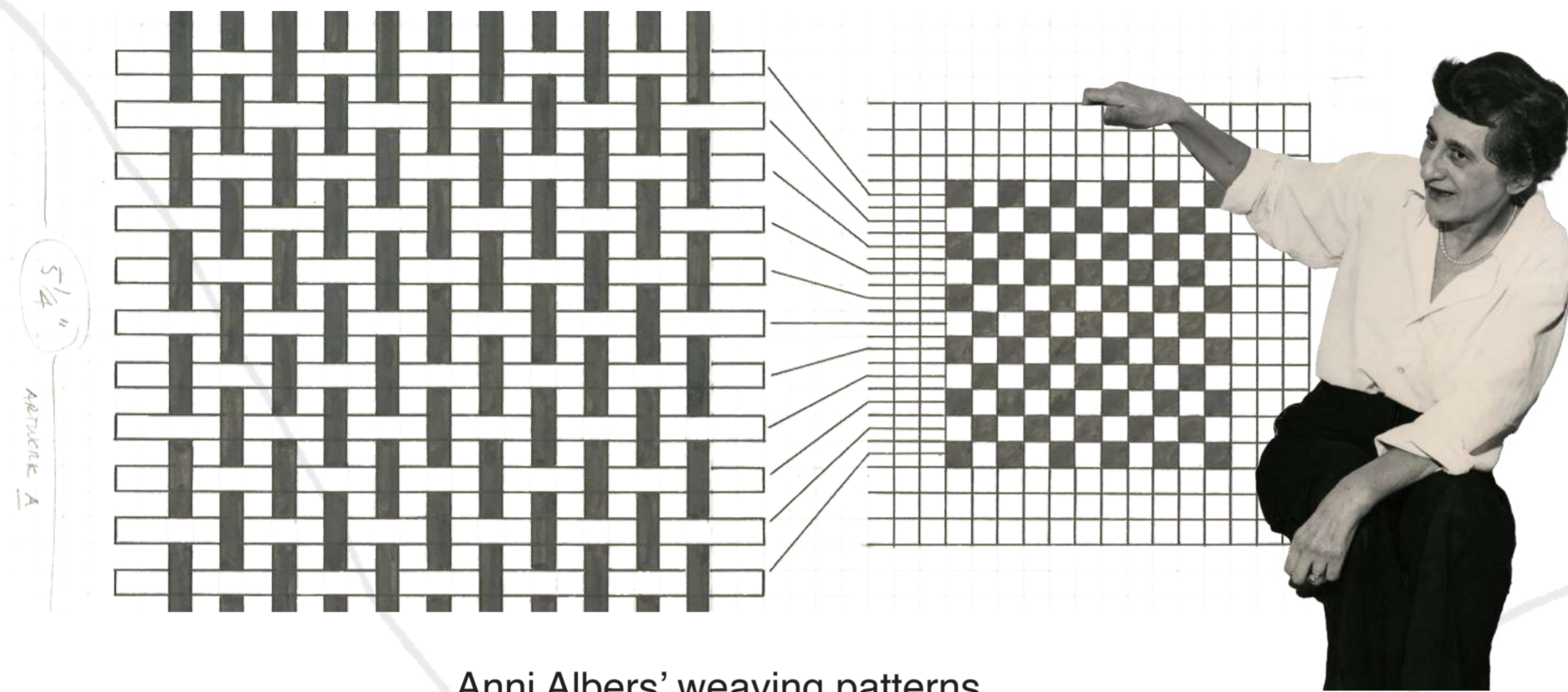
This project is a craft centre for the fibre arts coupled with a drag club. It is located in the former Simpsons Clothing Factory in Dalston, linking the history of the rag trade in Hackney to the programme of the project. Using a language of theatre, fabric and strings the project is a celebration of the craftsmanship and creativity of women in the textile industry and fibre arts. A craftsmanship that is considered less valuable than others because it is seen as feminine and therefore lacking skill.

The project uses fibre art as a methodology and as a means to question feminine identity in three ways:

- The Craft Centre provides a space for crafters to create fibre art. It offers the facilities, tools and machines needed for weaving, sewing, quilting and machine knitting; as well as more analogue methods such as embroidery, knitting, crochet and felt work.
- The Drag Club explores fibre arts as an element of expression and as a way to create a community. The performers dress up in the fibre art created by the crafters, in doing so transforming both the fabrics and themselves.
- Finally, the building itself is dressed – transforming fibre arts techniques and materials into architectural elements that are both structural and ornamental. Thus, the building structure is utilised as a weaving loom, its woven surfaces functioning as partitions between activities, while the walls of the drag club are upholstered, using fabric manipulation techniques to bring original textures and colours to a space.

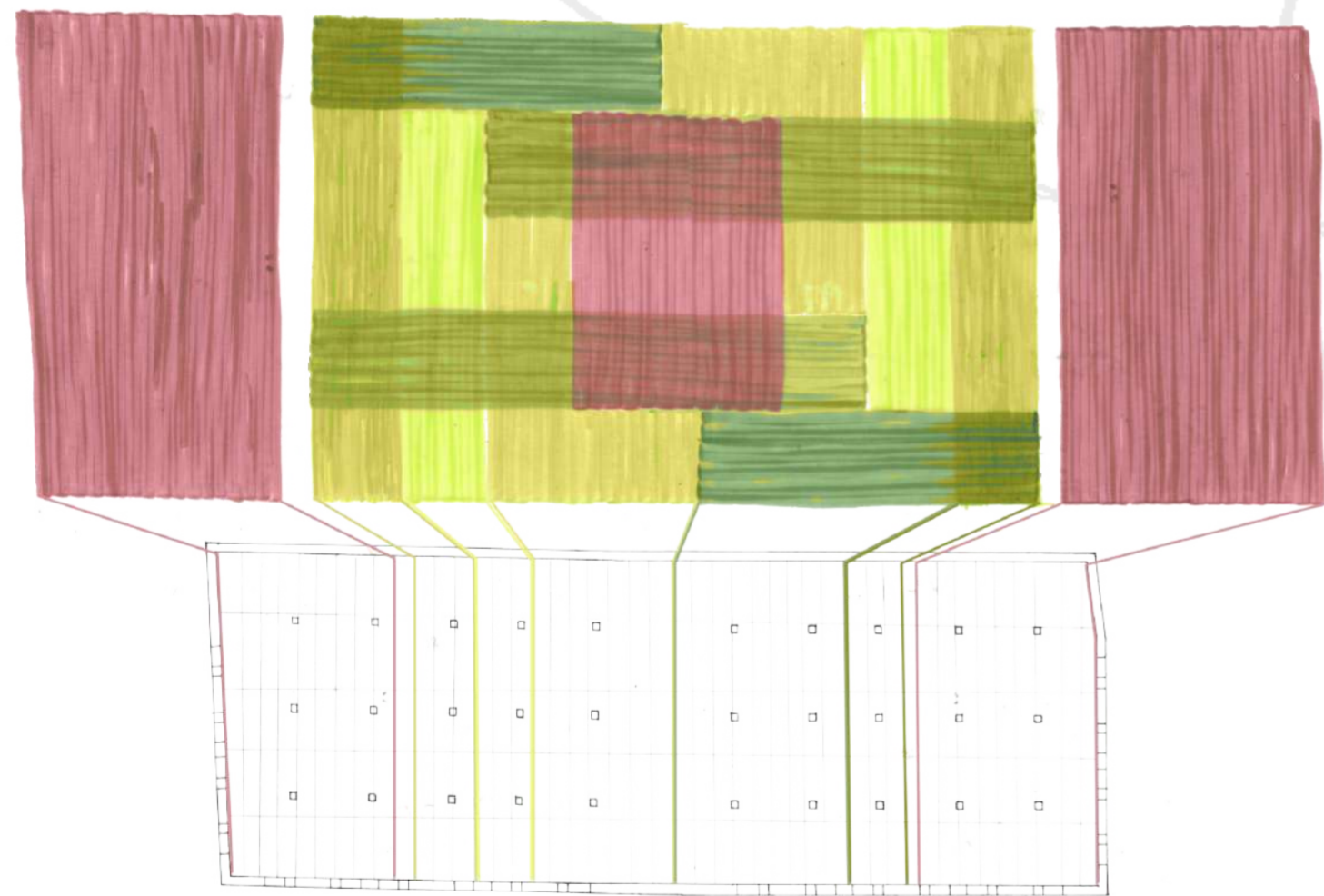


92 Stoke Newington Road
N16 7XB

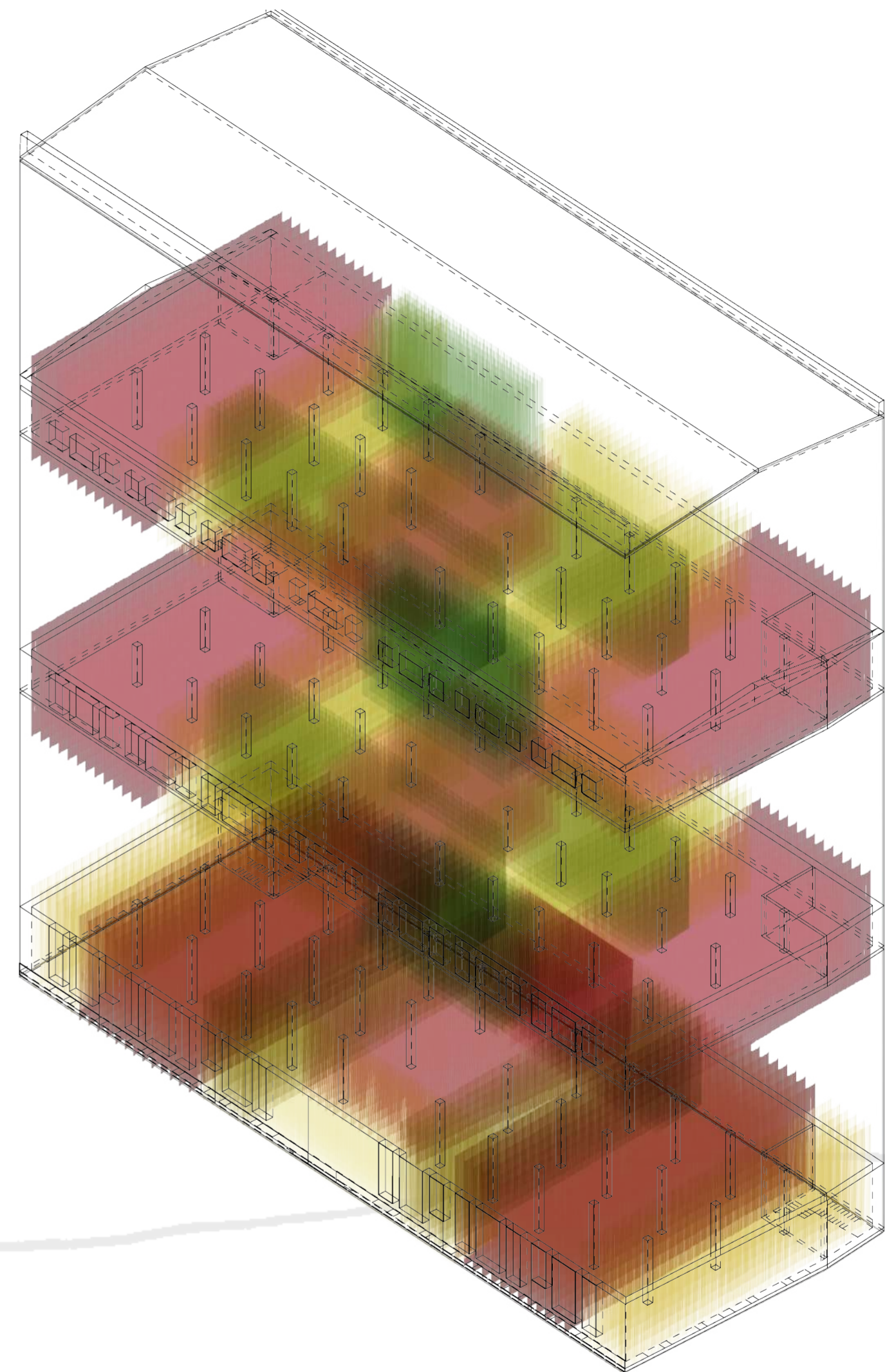


Anni Albers' weaving patterns

The weaving patterns are becoming a way to draw spatial strategies diagrams.



- exhibition
- craft 1
- craft 2
- common
- materials
- craft 3
- craft 4
- cloakroom
- seating
- bar
- stage
- dressing
- standing

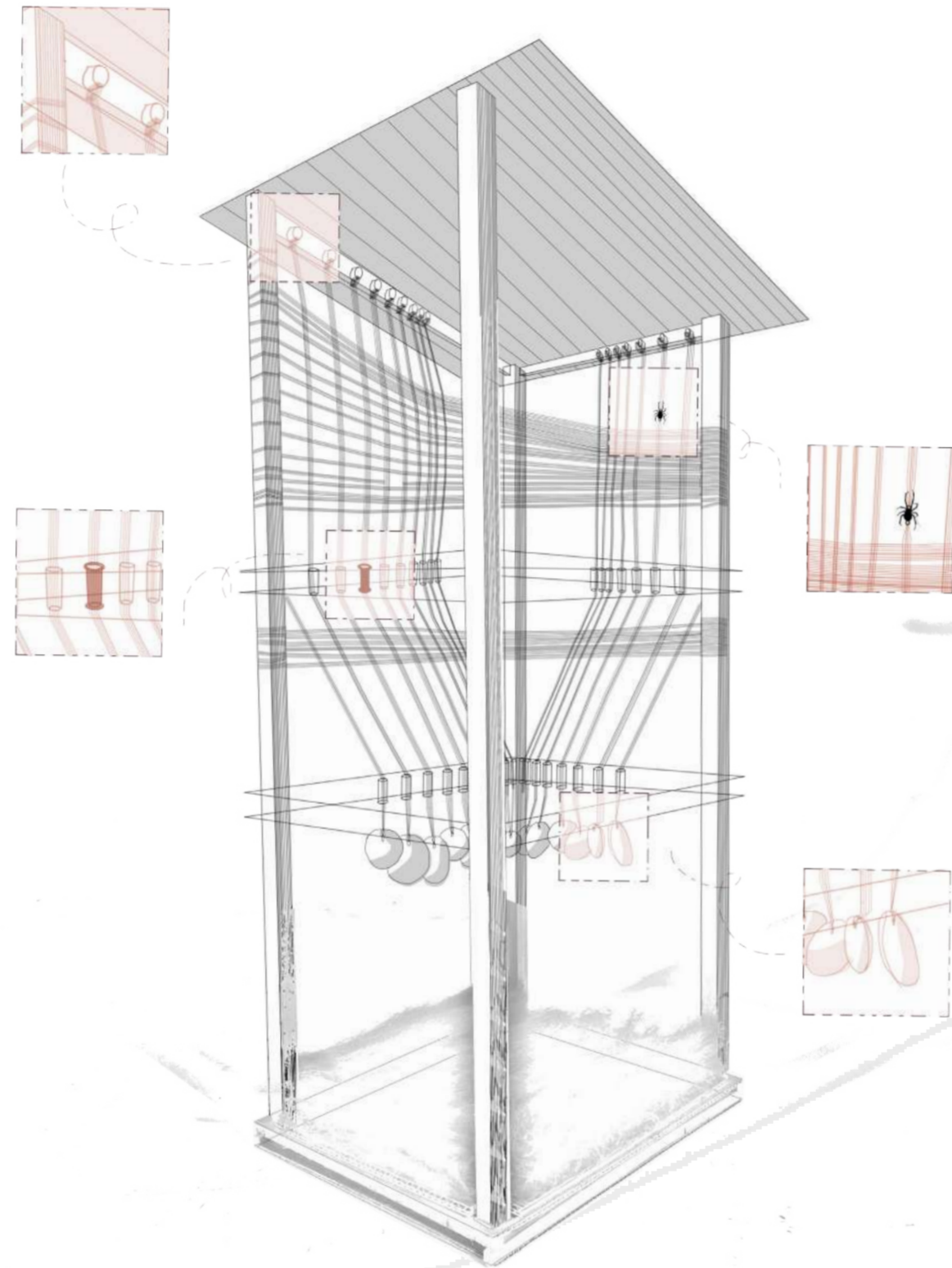
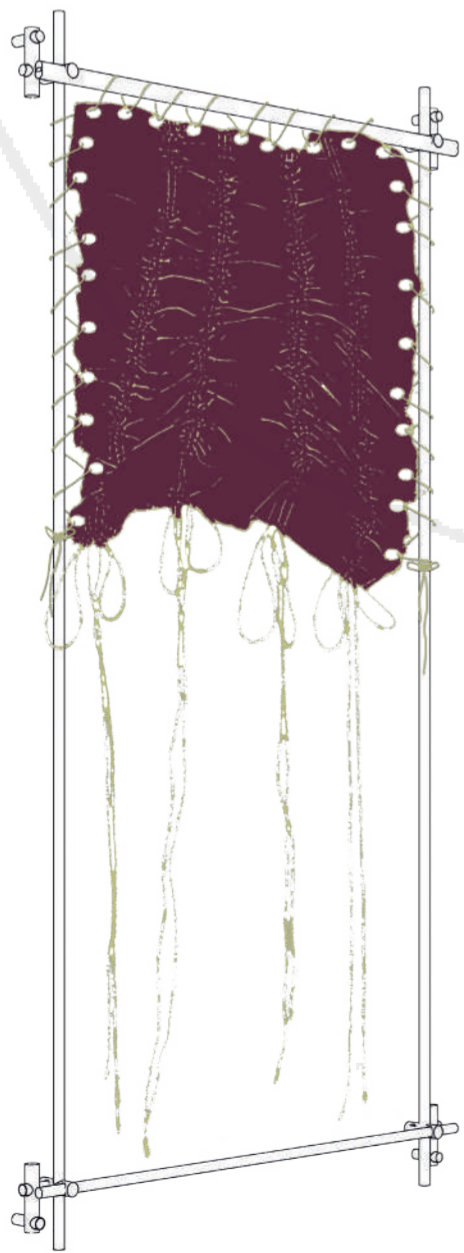


spatial diagram

WEAVING PATTERN AS DIAGRAMS



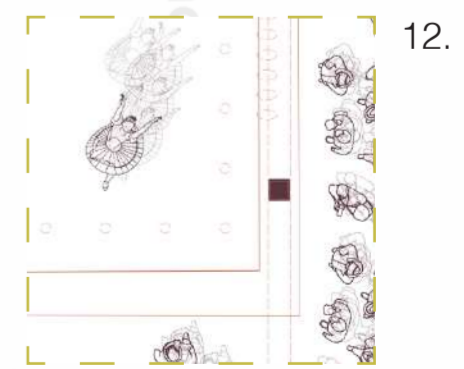
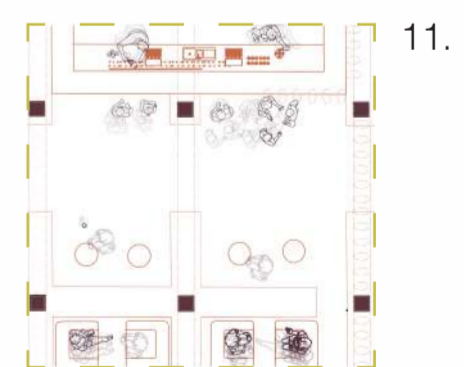
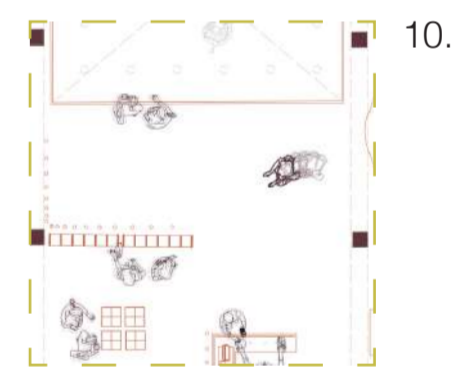
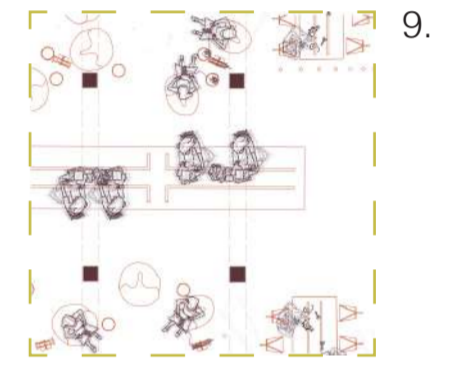
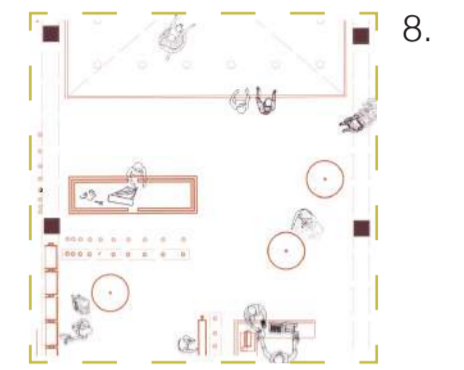
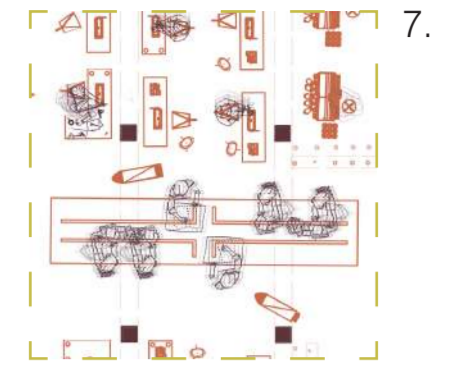
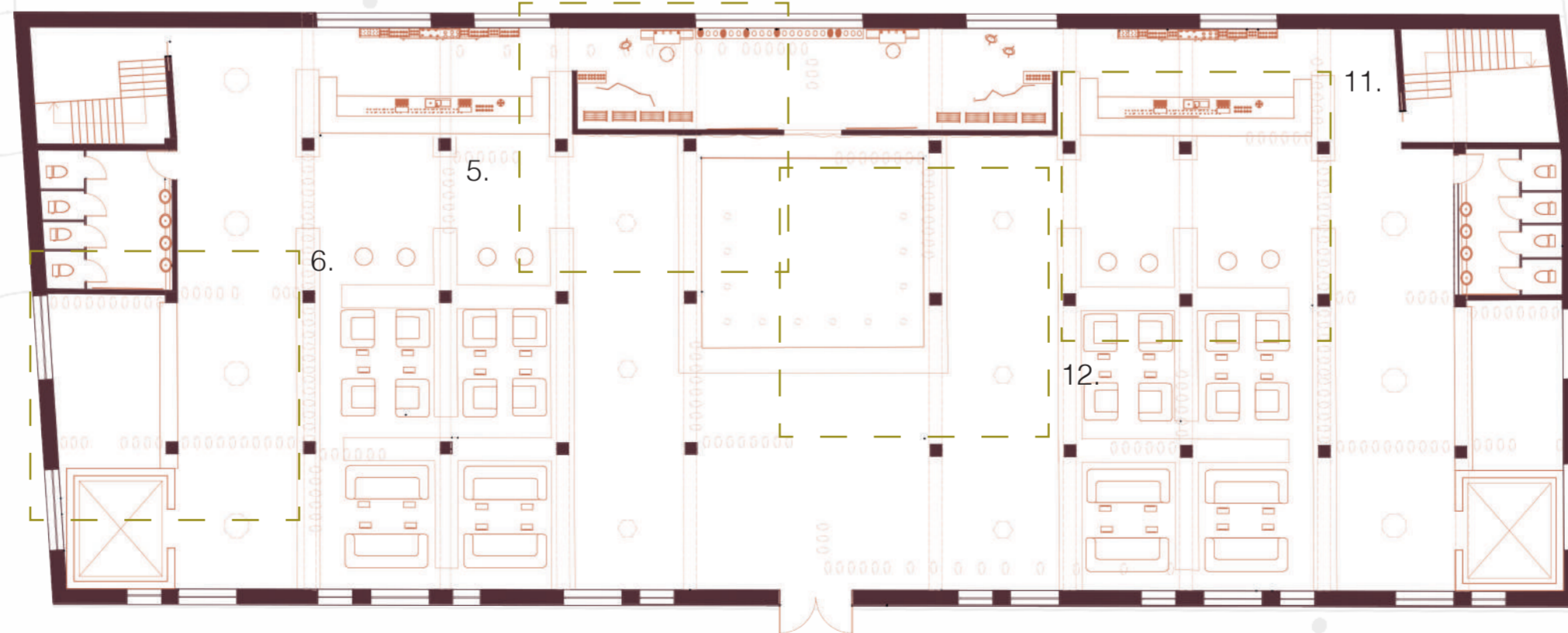
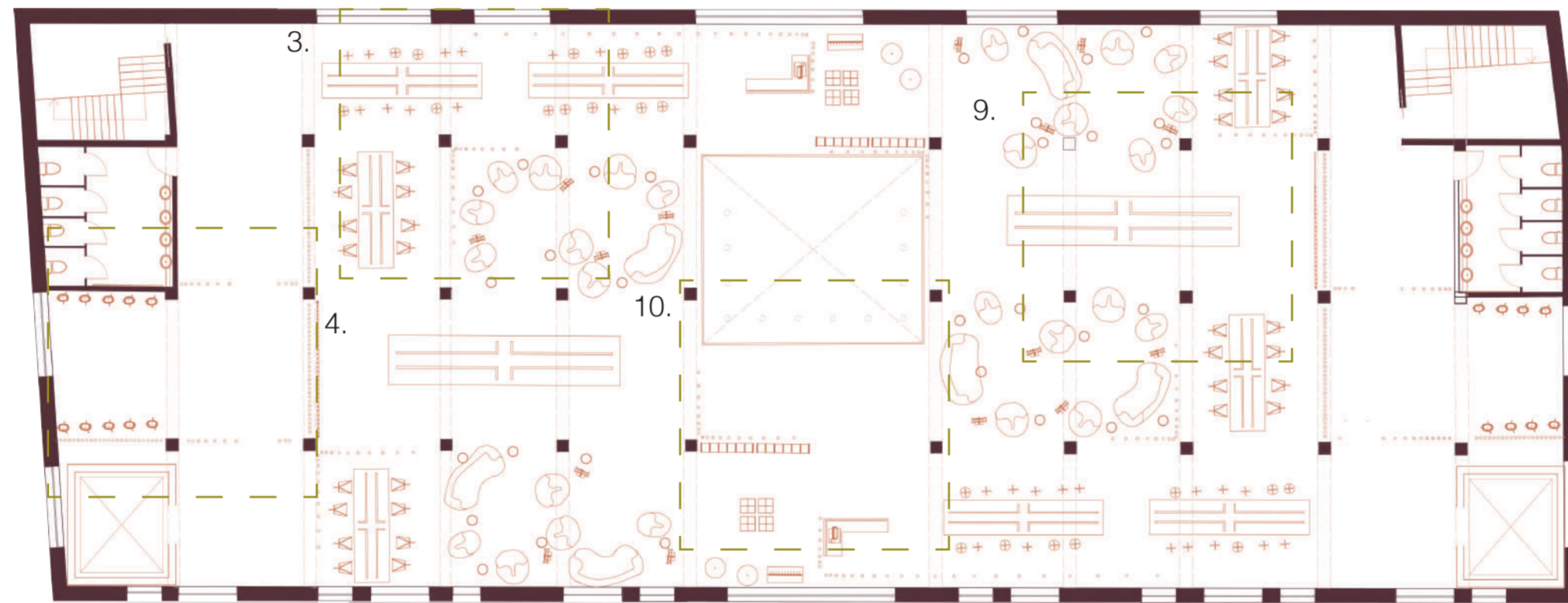
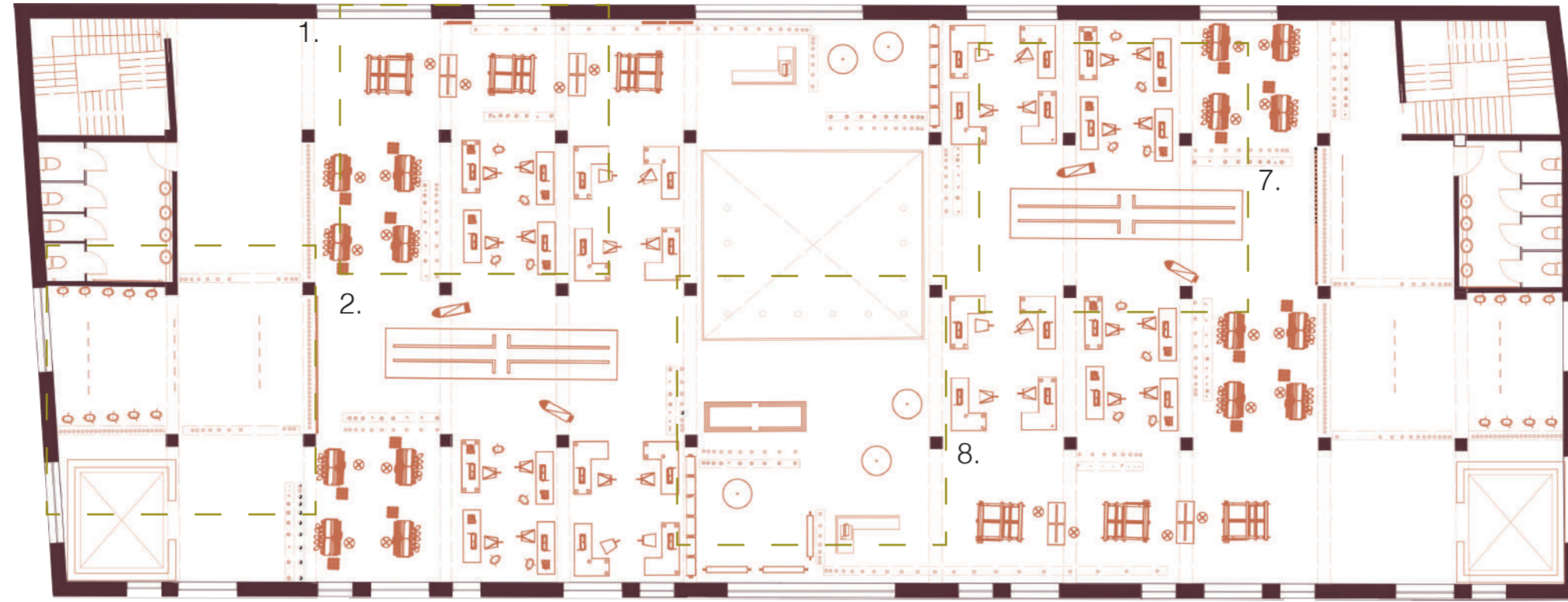
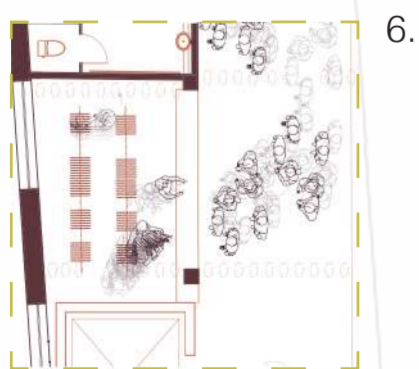
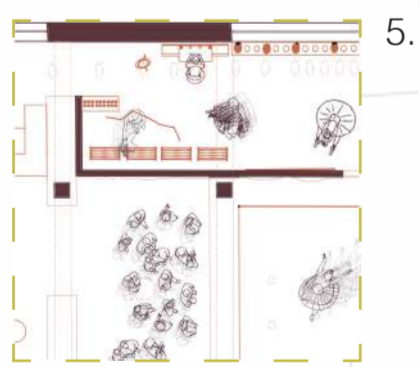
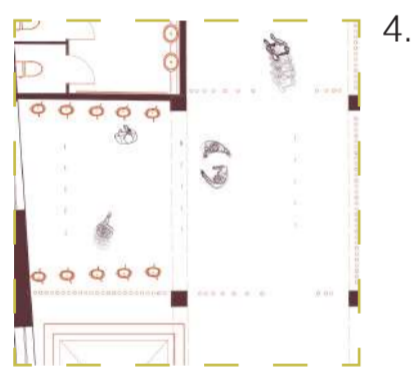
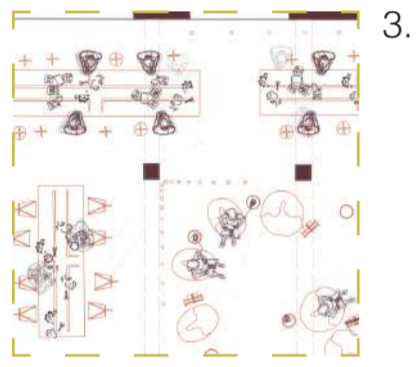
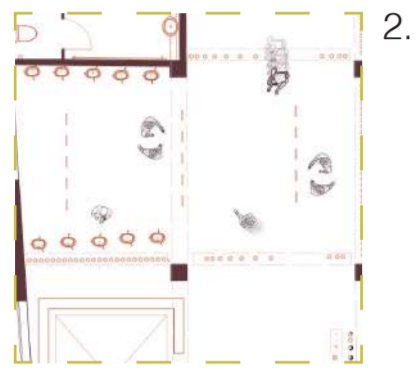
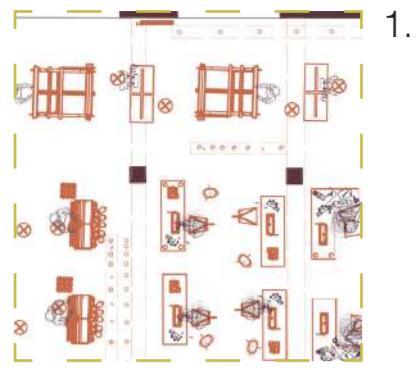
Fabric is used as ornamentation, through the technique of wall upholstery. The fabric is stretch onto a wooden scaffolding-like frame. The fabric is interchangeable allowing to display various fibre art throughout the year.



The structure of the building is inspired by a traditional warp-weighted loom. Each architectural element correspond to a component of the traditional loom. The woven surfaces are becoming partition walls.



THE LOOM STRUCTURE AND WALL UPHOLSTERY



COURTHOUSE LANE

82 to 90

FLOOR PLANS

10.05am Maxine is choosing fabric for her project...



10.30am the seamstresses are cutting the patterns for their projects...



7.45pm the drag queens are getting ready to perform...



10.15pm after a long day the crafters have made their way down to the drag club...

A DAY AT THE LOOM