



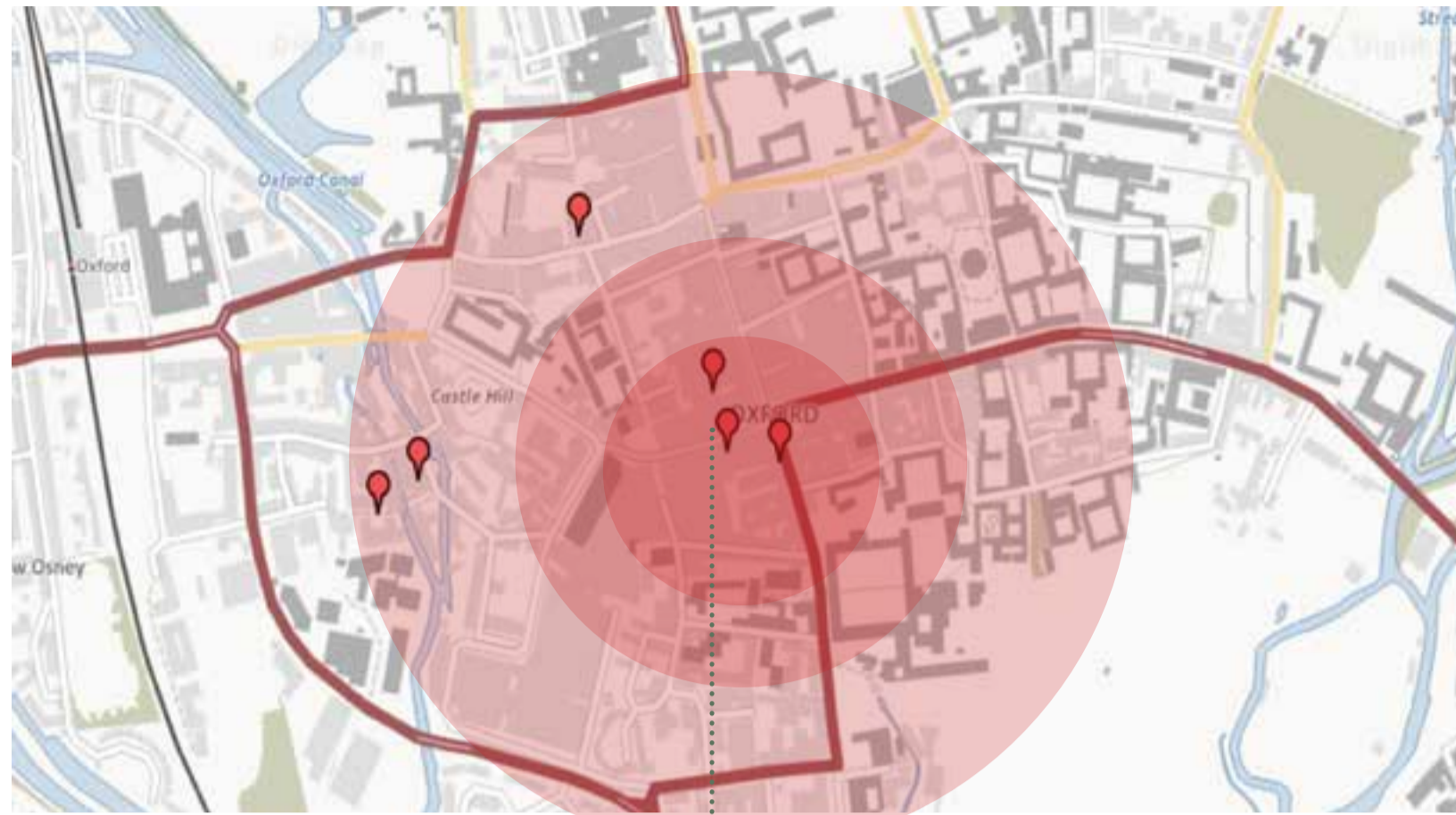
# THE FREEDOM HUB SOCIAL INTEGRATION

SASHA MAY GERRY

The Freedom Hub is a social enterprise working to support people who are homeless or vulnerably housed. The hub acts as a safe space for them to get free therapy, help in getting employment and housing. There is a day centre in the hub which offers showers, lockers and small kitchen for anyone on the programme to use. The ground floor is mainly public with charity shops and a cafe which earnings all go towards The Freedom Hub's work. The first floor is fully private to those who work for The Freedom Hub and those who are apart of the programme, they can find the therapy rooms, day centre, lockers and showers on this floor.



# Social agenda and values for creating social change within Oxford



The Freedom Hub



Crisis work with homeless people to find them homes. Crisis work closely with landlords who they know will be **kind** to people in tough situations



Freedom Hub

The freedom hub is a social enterprise that offers:  
**Job opportunities**  
**Housing**  
**Therapy**  
**Showers**  
**Lockers**  
**Community**



Homeless Oxfordshire works to give homeless people **control** and **independence**. They help boost their self-esteem, **encouraging** them to get back on their feet.



Aspires Oxfordshire help people who are homeless, experiencing poverty and who are disadvantaged get employment and housing by **empowerment**.



Emmaus Oxfordshire provides real, alternative solutions to homelessness that works. They have a store that sells pre-loved furniture, clothes etc. where all funds goes towards the charity and their work.



The Gatehouse offer free support for adults who are homeless, vulnerably housed, on low/no income and who want **company** and **community**. They offer food/drink, personal counselling, showers and activities.



community



housing



therapy

## Core values of the Freedom Hub

**FREEDOM**

**EMPOWER**

**ENCOURAGE**

**INDEPENDENCE**



# Experiencing the building from both internal and external users



**Name:** Peter  
**Occupation:** Edge Housing floor support  
**Role:** Walks around freedom hub making sure each areas are running smoothly. Peter is there to answer any questions of the public and direct any people who many need support from Edge Housing.  
**How often in the Freedom Hub:** 5 days a week.



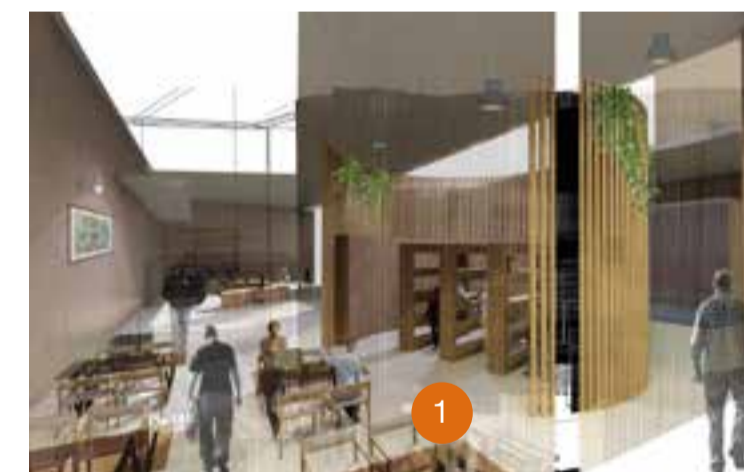
- 1. Reception to the Freedom Hub, with living room space.
- 2. Entrance, public walk way
- 3. Edge Cafe
- 4. Edge Charity Shop
- 5. Public seating area/towers
- 6. Job centre
- 7. Public toilets
- 8. Lecture theatre



- 1. Library
- 2. Edge office
- 3. Towers - seating/walking through
- 4. Private living room area for homeless
- 5. Showers and lockers
- 6. Therapy Rooms
- 7. Edge meeting room



**Name:** Susanna  
**Occupation:** Government Delivery Manager  
**Role:** Works with the Local Authority Partners to make sure we can help as many of their residents as possible find jobs and housing.  
**How often in the Freedom Hub:** 4 days a week



# Building in action, a safe place for the homeless



Public cafe - earnings go into charity



Private day centre kitchen for the homeless



Office to the charity - Edge Housing



Public seating area - centred in the building



Day centre

Giving a chance to homeless people to have a shot at life is really important. Offering free therapy, support in employment and getting housing is crucial. The freedom hub is semi public allowing pass-byers to engage with this work and see the social justice and change being done in these vulnerable peoples lives.



Therapy rooms

Maggie Centre, Cardiff



Maggie Centre, Oldham



The design of the rooms in which these vulnerable people enter for either therapy or to even just have a cup of tea is really important. The Maggie centre has helped influence the design of the freedom hub.

## Furniture - a protected shell to those who are vulnerable



The furniture in the design is made up from timber louvres, creating tall tower like structures which allow light to shine through from the glass roof above. This creates beautiful patterns on the ground as the sun moves around.

The design process behind creating these towers was to create a semi private feel to the build while feeling safe if you are vulnerable. They are open yet make you feel separated from the bustling city around you.

