

EMILY JONES

THE CLARENDON HUB

A multi-functional space combating the high cost workspace rent within the Oxford city centre

The 'Clarendon Hub' project is located in the centre of Oxford and has been developed on Jan Gehl's principles for creating successful cities. It will primarily work as a multifunctional space to facilitate co-working environment for graduate designers to work with social organisations and local community. High rent prices in the Oxford city centre have caused a rise in the cost of workspaces for charities and graduate often preventing them from working within the centre. This alongside the monopoly Oxford university have on the urban environment within the centre have created a resentment towards the student population. Creating a 'hub' with affordable co working spaces for recent design graduates, allowing the local residents and social organisations to utilise their services for planning application design advice will help to reduce this issue. While also allowing the graduates to build a professional skillset and create a network of local clients. The hub will also provide the local residents with a central community space allowing them to connect with the graduates and creating a community foothold within the Oxford city centre. Alongside these functions there will be a space for local social organisations who struggle to afford the high prices of rental units within the centre with an affordable space to exhibit and raise awareness for their organisations creating a greater reach due to the high amount of foot traffic within the centre. There will be a space for lectures and events to also boost this awareness and allow both the students and the local population to interact and bond in a shared community space.



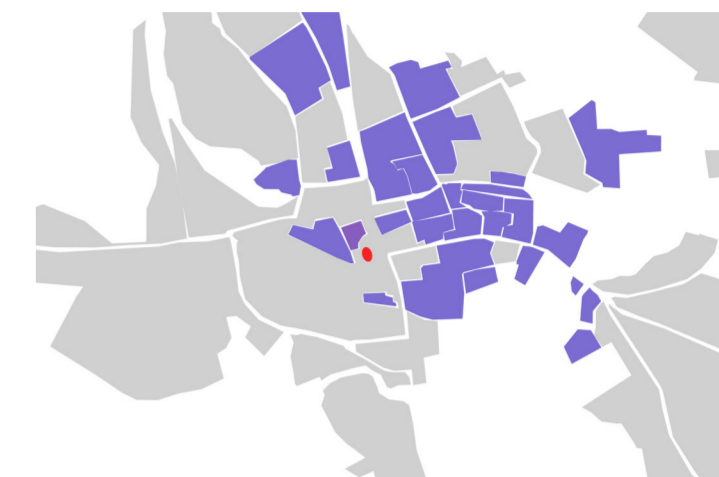


High Street

Queen Street

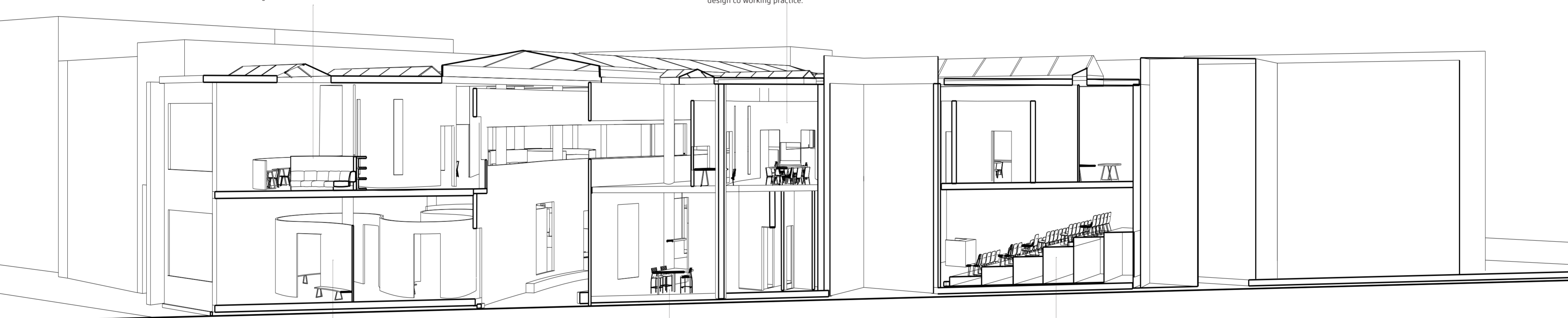
Covered Market

Urban and green spaces owned by Oxford University who have the monopoly on green spaces and buildings in the city centre



The relaxed soft easting space looks out onto Queen Street, creating a quiet space for designers to spend away from their co working desks

The co working spaces will provide designers with a flexible working environment promoting a sharing of information and creation of a successful design co working practice.

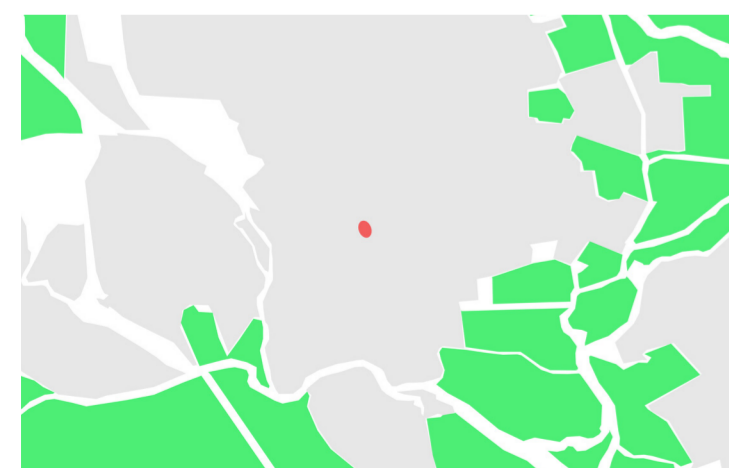


The exhibition space will create interactions between residents and the work of the designers and social organisations, promoting conversations.

The raised level tables, will be used by both the community and the graduates, providing a space for them to mix professionally and semi public allowing them to engage easily and facilitate an exchange of skills.

The lecture theatre will act as a information sharing space, for users to attend lectures from designers and social organisations promoting conversations between the users and the various organisations.

Green space available to the Oxford residents



Native Oxford fauna

Silver Birch tree



Wild cherry tree



Elder tree



Hazel tree



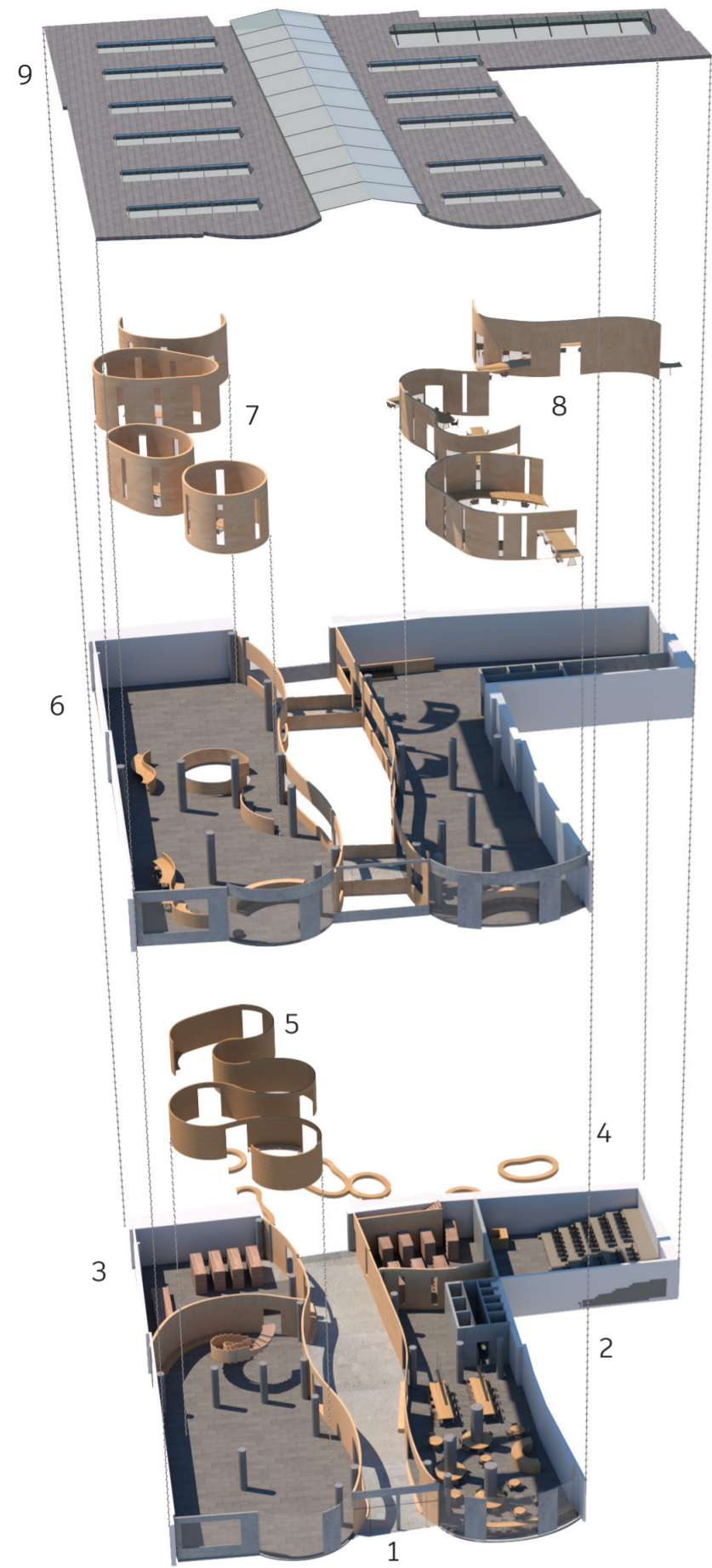
Field maple tree



This small herb garden is found on the roof of the Westgate Shopping Centre. It activates the users senses of smell and creates a relaxing space for unintentional user interactions.



Incorporating the successful natural elements present in the Westgate into the Clarendon Hub.



- 1 Queen Street entrance
- 2 Community cafe
- 3 Community research library
- 4 Lecture theatre
- 5 Exhibition space curve
- 6 First floor design space
- 7 Private meeting rooms
- 8 Co-working design space
- 9 Sky lights in roof



In some of the co working curves a central desk cut through the curve, this creates a more open workspace as it links the workers using the interior of the curve and also the users traveling past the exterior of the curve or the designers working on the exterior curve side of the desk.



The co working spaces provide the designers with a higher level of privacy than the more relaxed working spaces on the ground floor but there are no physical doors or floor to ceiling walls creating a sense of privacy without actually creating a physical boundary from the rest of the first floor.



The change of height for the communal work spaces signals to the users that this is separate from the cafe space without creating a physical separation, making the workspace. This lack of threshold will make users more comfortable with using and accessing the workspace tables. The low level lighting will also increase the comfort of the users as the light will enable them to work more productively.



The variety of table sizes within the cafe space enables groups of various sizes to come together and use the space as well as singular users working in the space. There is a large amount of natural light that enters the space from the street due to the large floor to ceiling windows also allowing cafe users to watch the external street users.



Creating an open but more private space for the designers to relax in a quiet space, through combining a curved storage space and on the inner curve placing a softly furnished seating arrangement creating a degree of privacy without creating a closed off space.



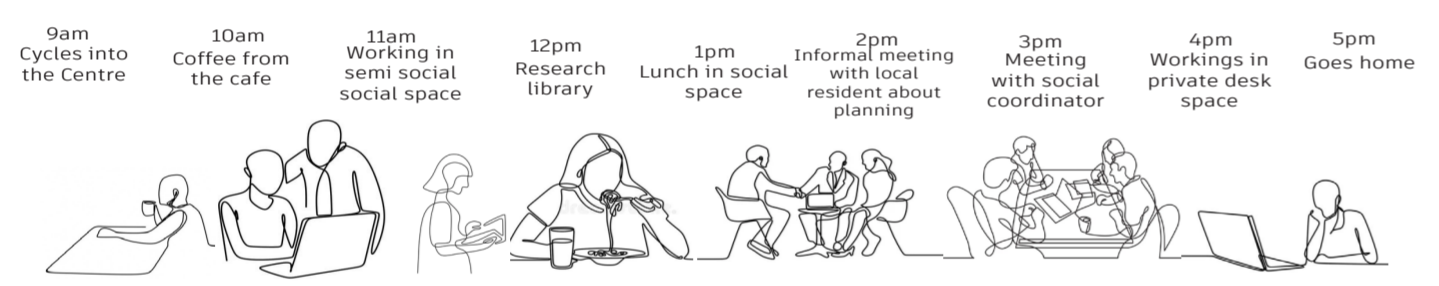


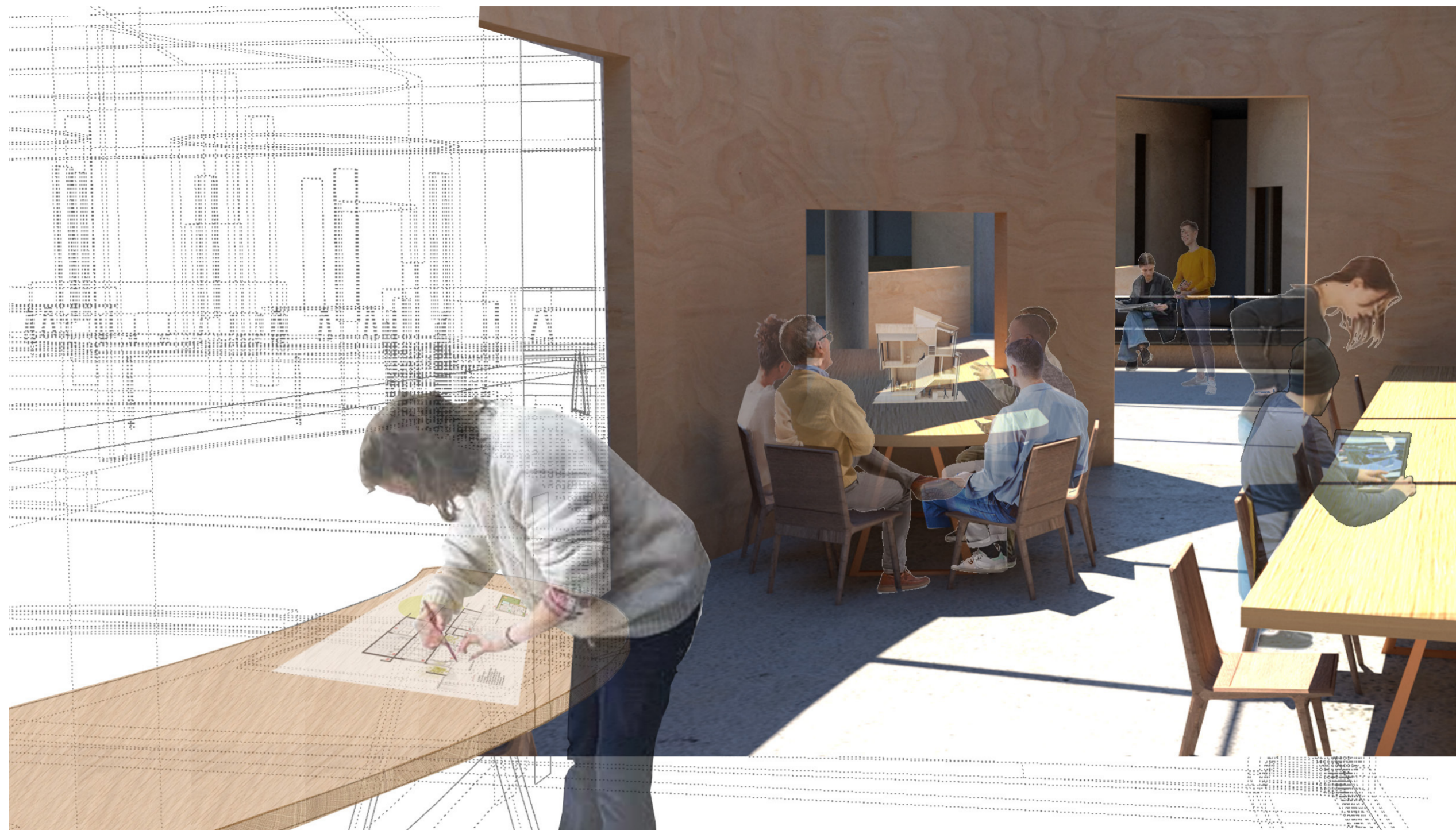
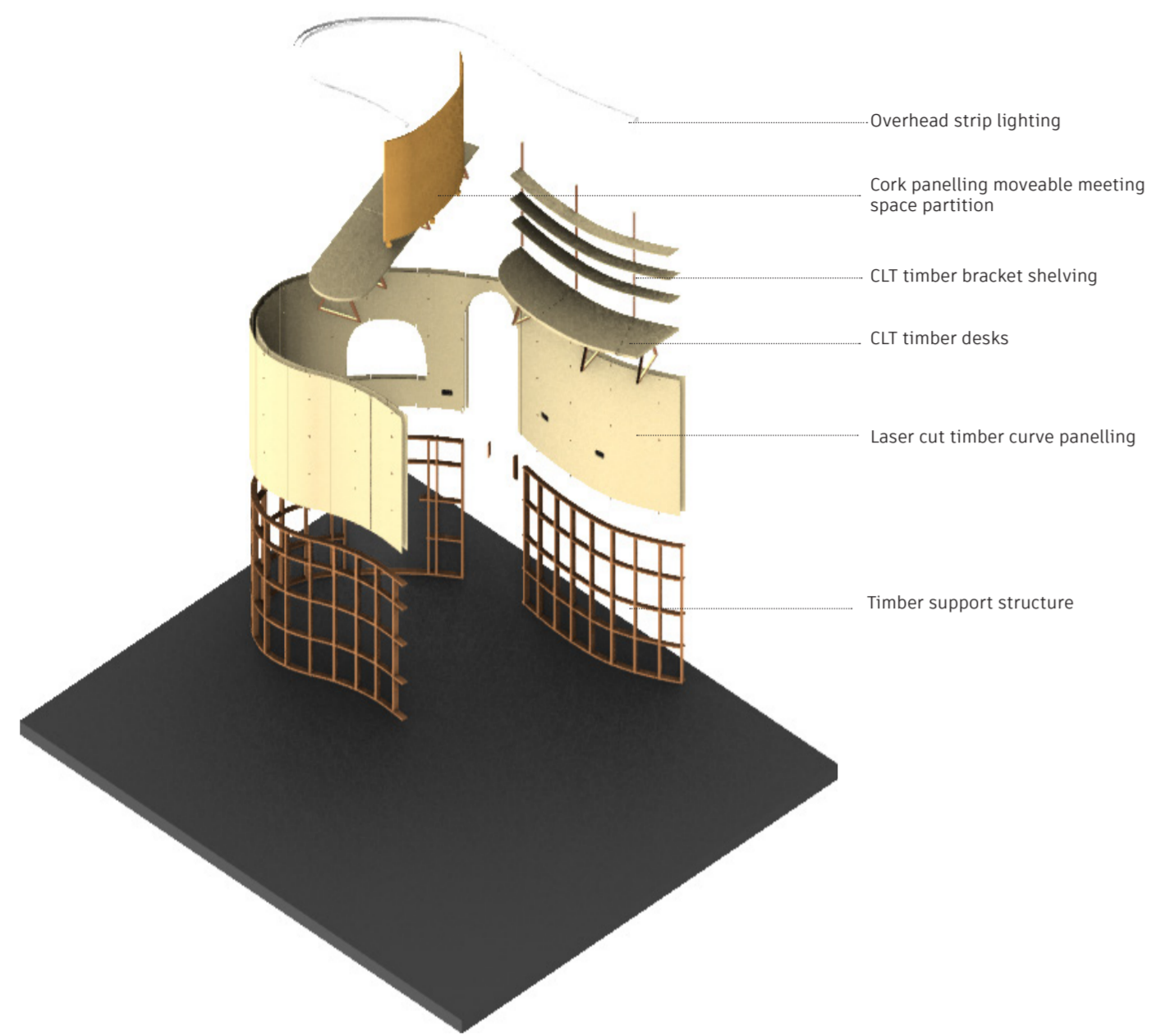
The community research libraries and the upper level coworking spaces will not have any evening programs but will function as open access spaces for the graduates and local users during the daytime



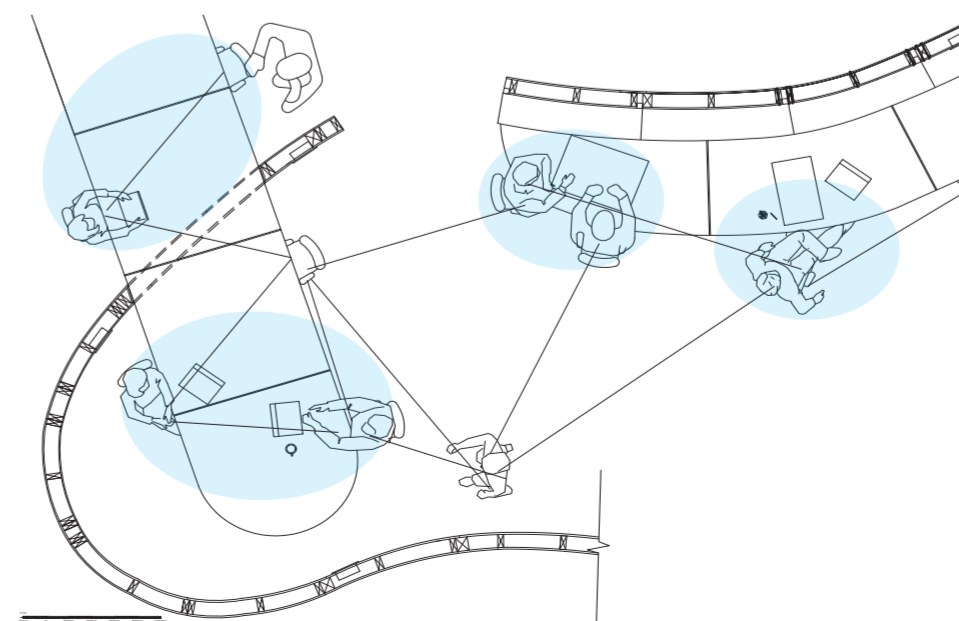
Both the community cafe and the exhibition space will have evening programs that will create a wider reach of active users to fit with more varied user timetables

Typical daily timetable of a graduate designer





The cork screen can be moved to close off the collaborative central desk space and form an informal meeting space for small groups without impacting the study of those working individually within the workspace.



Open connection between users across the furniture workspace

