

# FUSION TREE HOUSE

Growing Art and Community

Hannah Luyen

Fusion Tree House envisions a new model for future community and creative spaces by rethinking how underused urban buildings can serve people traditionally excluded from dominant systems. Set in central Oxford, the project responds to ongoing political and economic shifts – rising inequality, shrinking public space, and the undervaluing of artistic labour – by proposing a regenerative, multi-level interior rooted in permaculture principles.

Designed for Fusion Arts and in dialogue with Oxford City Farm, the space integrates co-working, making, resting, and gardening into a layered ecosystem – a future workplace and gathering space that nurtures both people and the planet. Inspired by the Maggie’s Centre design brief, it blends inside and outside through natural light, domestic scale, and organic forms to create a calming, inclusive environment. This proposal offers a vision of community infrastructure where care, creativity, and sustainability are not afterthoughts – but foundational elements for future urban resilience.

FUSION ART Mission and Values



OXFORD CITY FARM Mission and Values



## STAKEHOLDER & SPATIAL PROGRAMME



### Organisation

- Curate programming, manage the space
- Act as stewards bridging art and ecology
- Partner with Oxford City Farm and others
- Ensure inclusivity and social justice remains a core mission



### Artists

- Use studios for making work
- Retreat to lounge/mezzanine for reflection
- Host public workshops & exhibit finished work
- Collaborate with gardeners to create site-specific ecological art



### Local Community Members

- Attend workshops (creative or gardening)
- Socialise in the café/courtyard, surrounded by art and plants
- Explore exhibitions as part of daily routine
- Volunteer in the permaculture garden



### Permaculture Experts

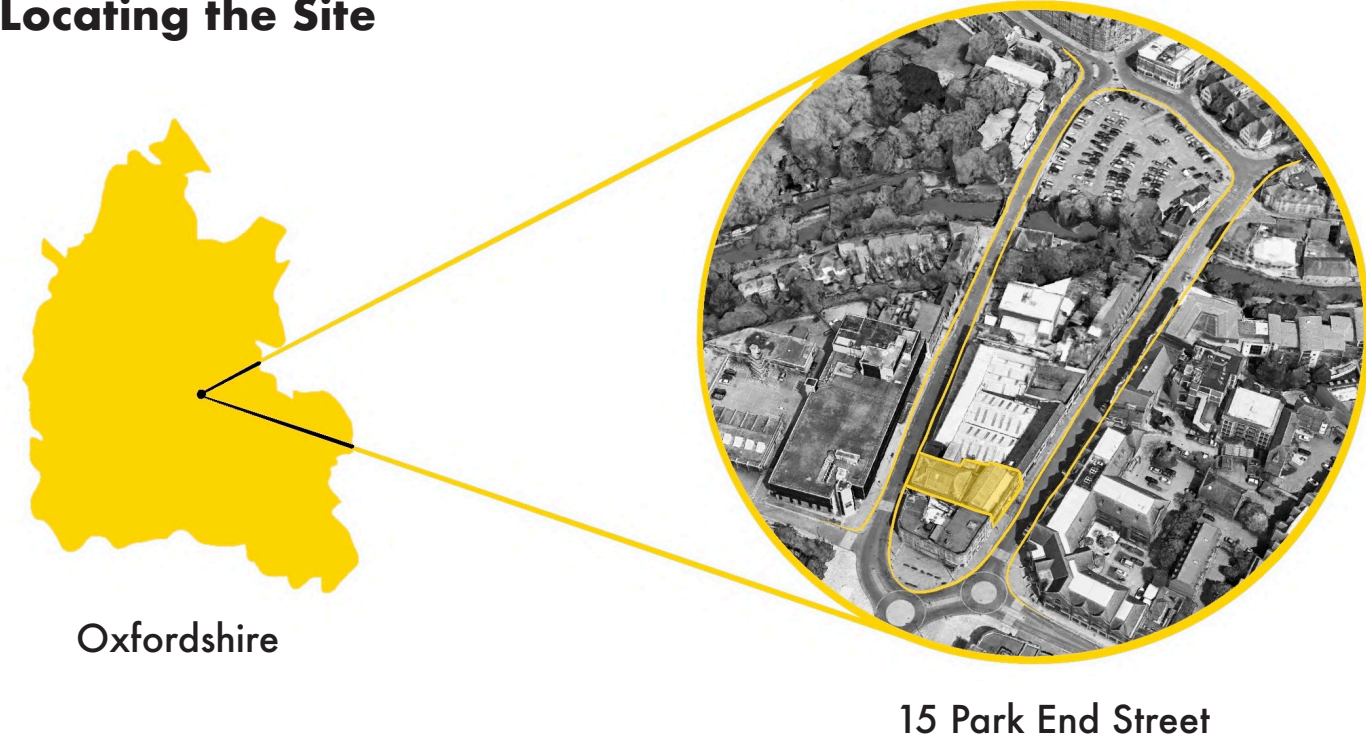
- Run workshops
- Co-design and co-maintain courtyard gardens
- Educate artists and the public about regenerative systems
- Use café/courtyard as informal teaching and sharing space



# 15 PARK END STREET

Tracing the Past, Planting the Future

## Locating the Site

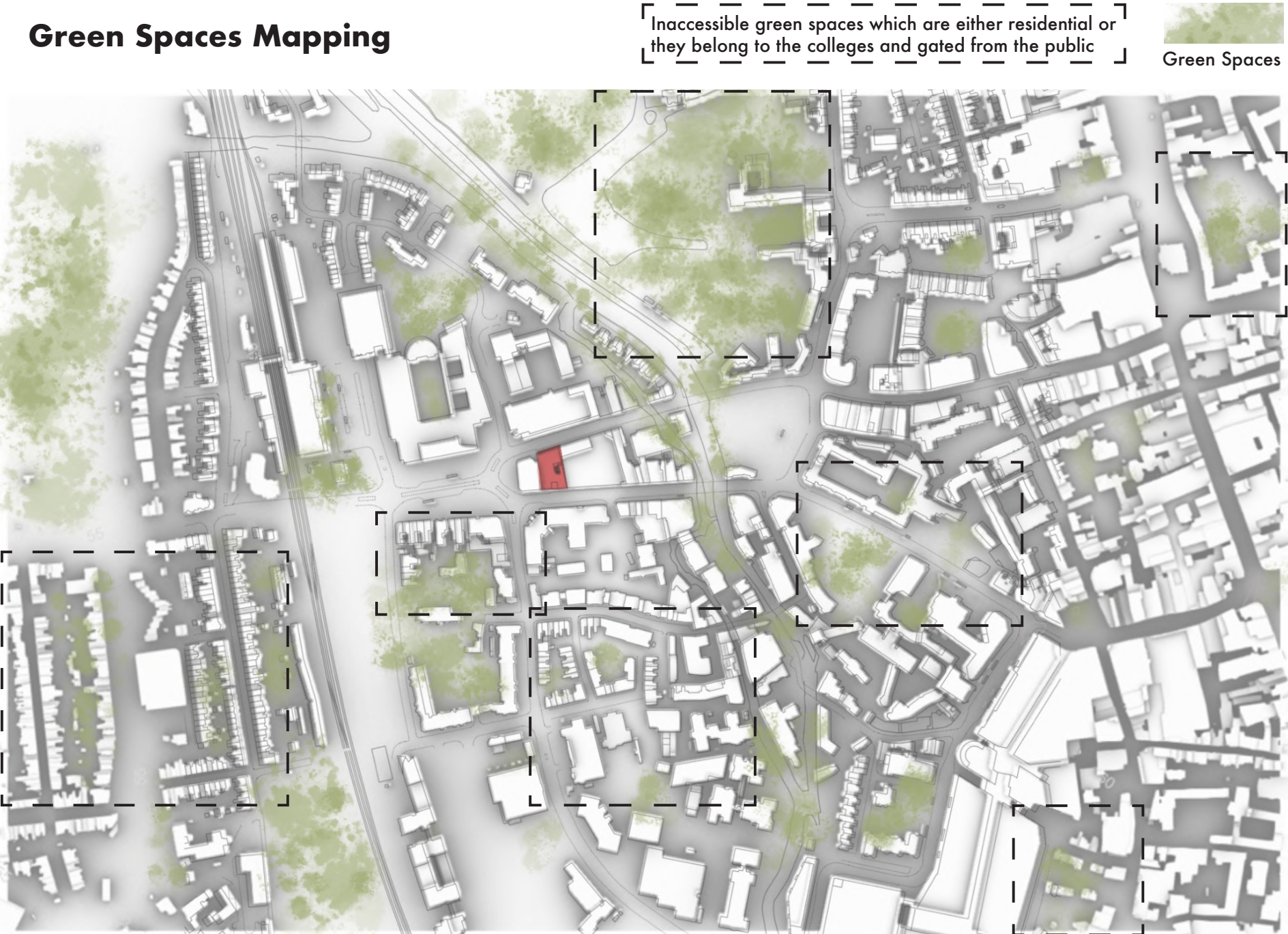


The site sits just beyond Oxford’s commercial centre, a transitional zone where footfall connects the train station, city centre, and surrounding neighbourhoods. Yet its underuse reveals deeper urban patterns: commercial prioritisation, inaccessible green space, and a neglect of cultural commons. Physical traces like the King Motor’s mosaic, cobblestone thresholds,... quietly tell a story of the building’s past. Rather than erase these, this project chooses to read them as foundations for regeneration. This is not a blank slate, but a layered space with civic potential – ready to be reclaimed for art, cultivation, and community.

## Circulation Mapping



## Green Spaces Mapping



## TRACES OF THE PAST



**Main Entrance**  
15 Park End Street

**Secondary Entrance**  
Hythe Bridge Street



In response to the site’s lack of accessible greenery, permaculture planting is embedded throughout the scheme to invite life and learning into the building. Proposed structural openings allow natural light to filter in and frame new visual connections to the courtyard garden. This act of transformation, rather than replacement, aligns with the award’s vision for future spaces: sustainable, socially attuned, and rooted in the specifics of place.

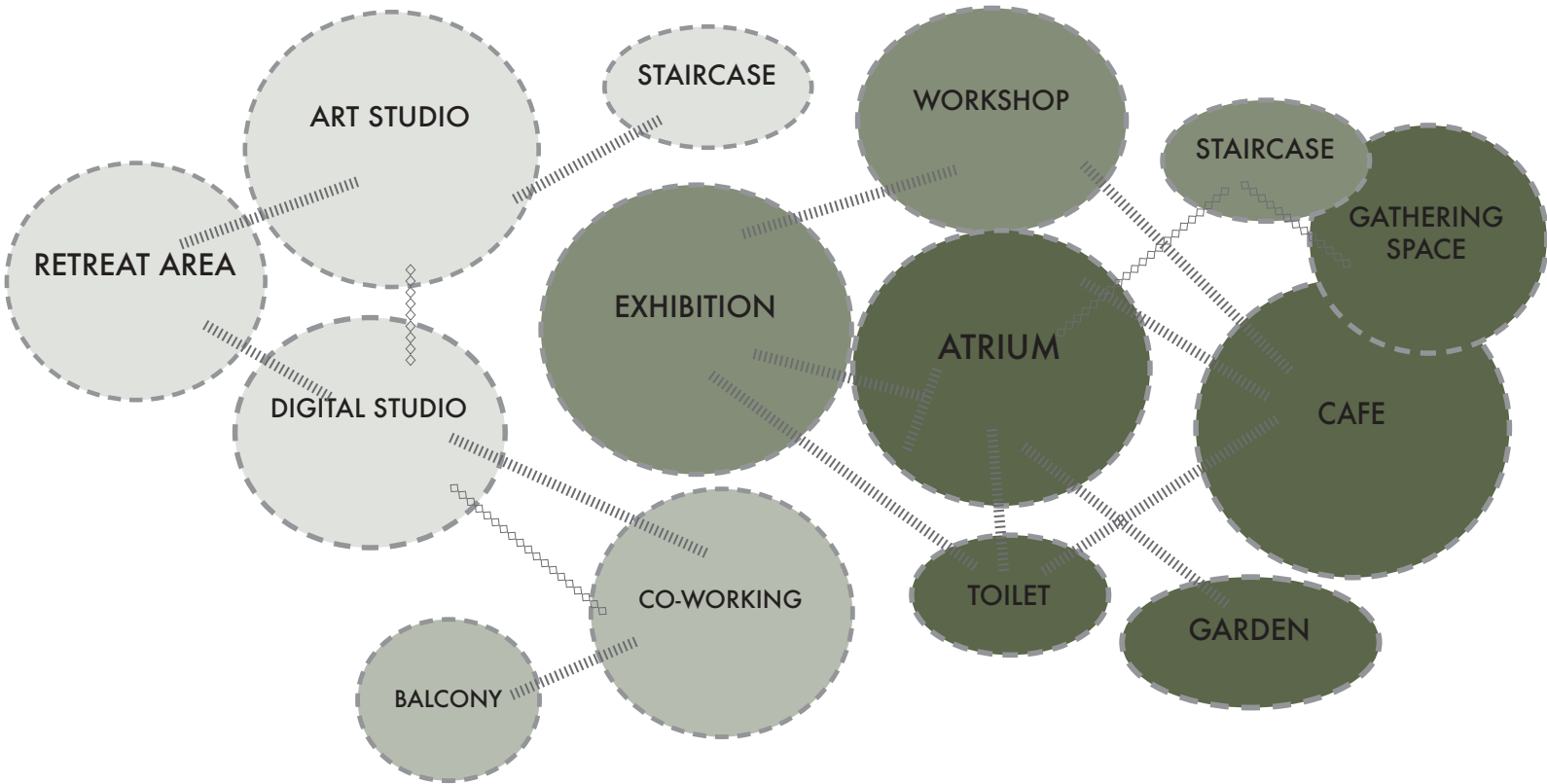




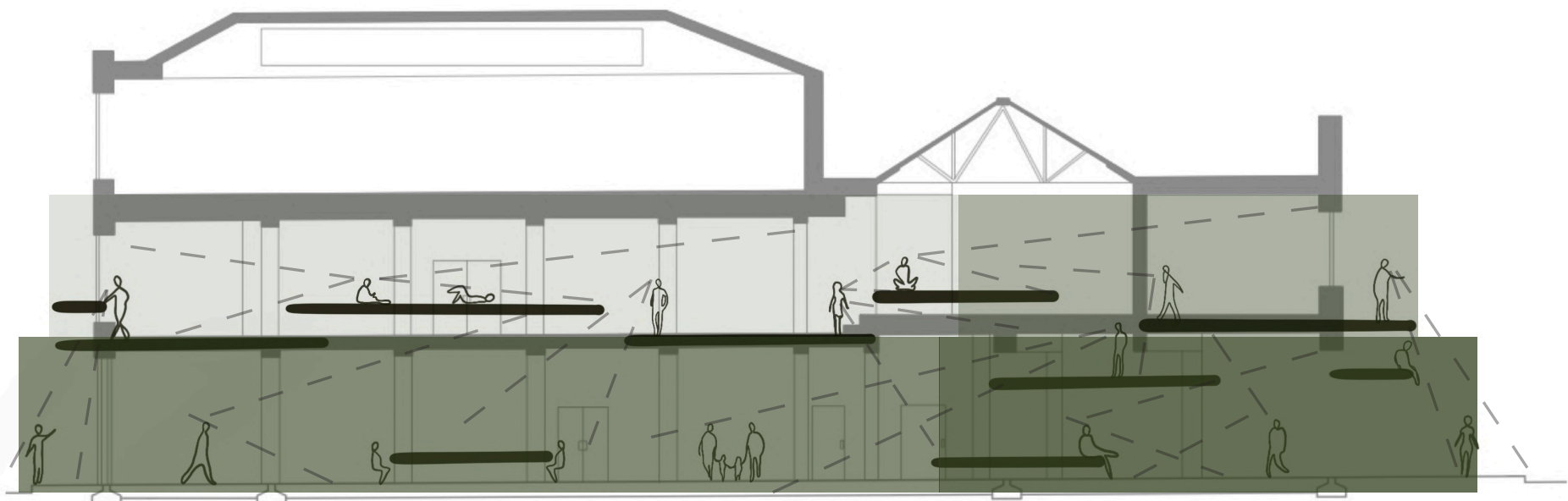
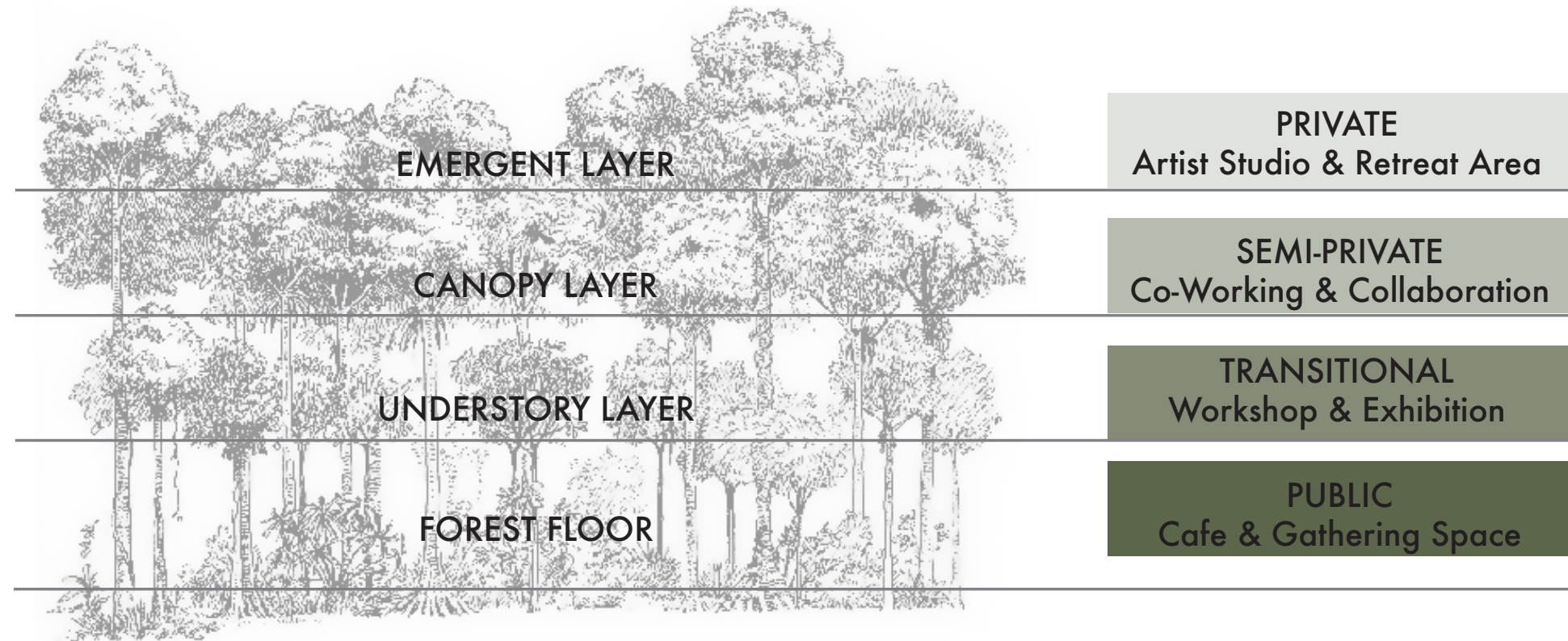
# SPATIAL STRATEGY

## Rainforest Zoning Layers Concept

Hannah Luyen



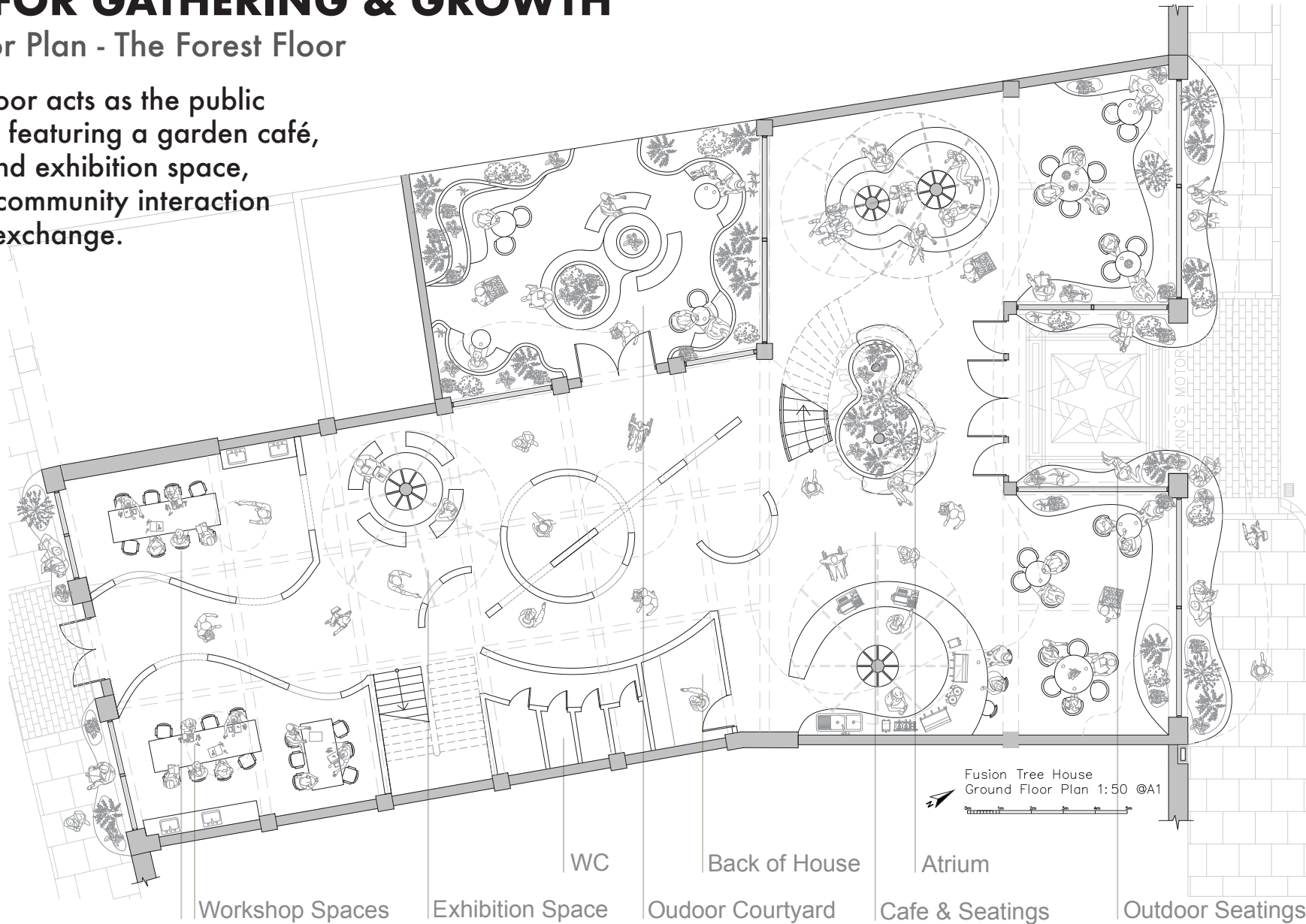
The spatial framework of the Fusion Tree House is inspired by the ecological structure of rainforest layers. This vertical zoning system helps balance privacy, accessibility, and collaboration across different user groups. By mimicking the natural rhythms of layered ecosystems, the design encourages organic movement, adaptable programming, and inclusive spatial relationships. This approach supports the Interior Futures award’s call for socially responsive environments by providing a flexible, non-hierarchical framework where art, learning, and ecology can co-exist and evolve.



## SPACES FOR GATHERING & GROWTH

### Ground Floor Plan - The Forest Floor

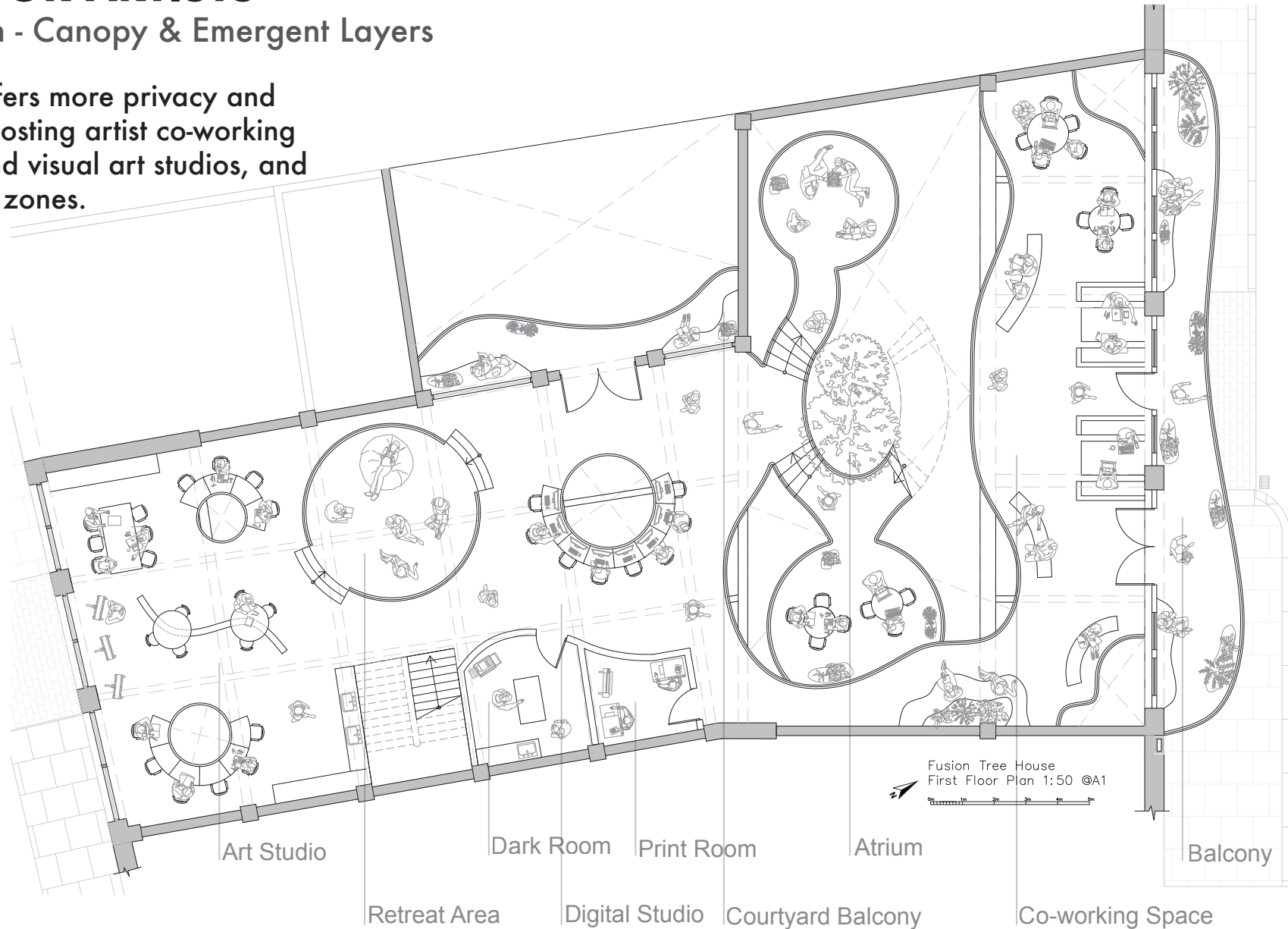
The ground floor acts as the public “forest floor,” featuring a garden café, workshops, and exhibition space, designed for community interaction and creative exchange.



## A HOME FOR ARTISTS

### First Floor Plan - Canopy & Emergent Layers

The first floor offers more privacy and creative focus, hosting artist co-working areas, digital and visual art studios, and elevated retreat zones.





# FUSION TREE FURNITURE

Platforms for Privacy, View, and Function

Hannah Luyen



## Constellation Tower

People's Architecture Office

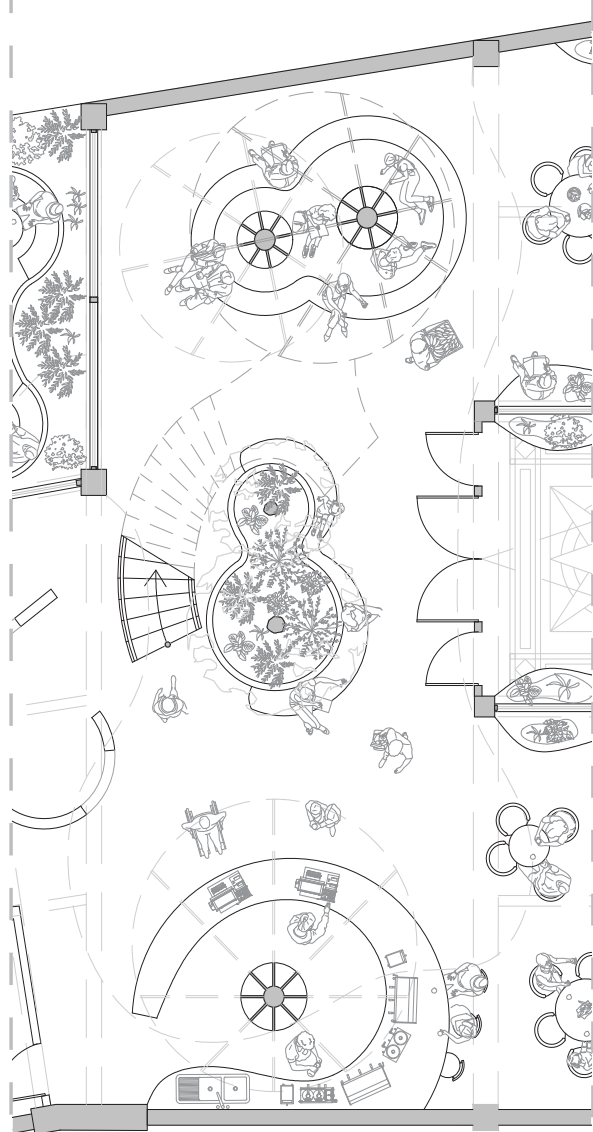


## Maggie's Centre Leeds

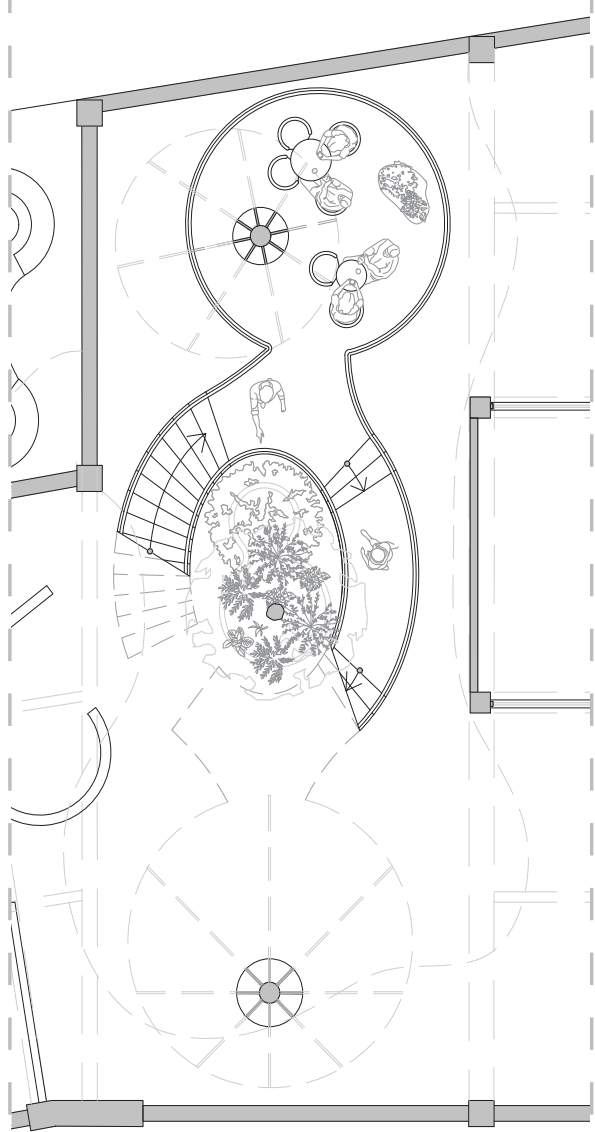
Heatherwick Studio



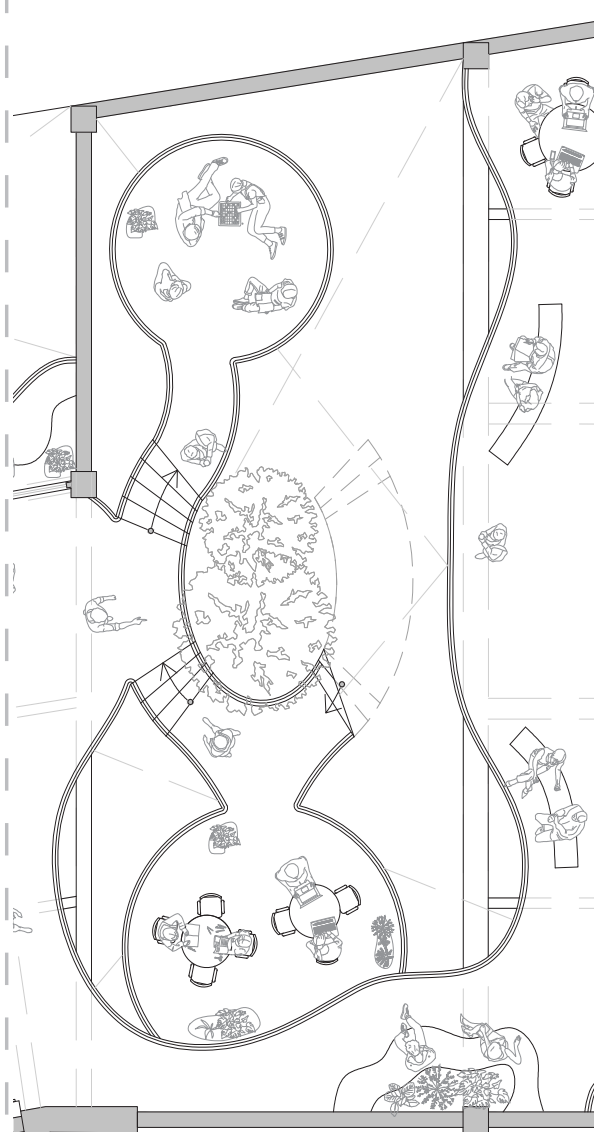
The Fusion Tree Furniture is a multi-level timber structure that brings together public and creative life in the atrium. Inspired by the Constellation Tower and Heatherwick's Maggie's Centre, it rises from café seating at ground level, to a co-working platform (2500mm), an artist studio space (3500mm), and finally a quiet retreat zone (5000mm). Acting as both circulation and structure, it connects users across layers of activity, offering a model for future interiors that are adaptable, regenerative, and socially inclusive.



Public Zone Ground Floor



Co-Working Zone First Platform - 2500mm



Artist Zone Second Platform - 3500mm

Artist Recharge Zone Third Platform - 5000mm





# FUSION TREE HOUSE OVERTIME

Hannah Luyen

“This isn’t a building – it’s a beginning.”



Unlike static monuments, the Fusion Tree House is designed to evolve. The planting will grow, programmes will shift, and community use will deepen over the years. It’s a building that expects to be used, adapted, cared for, and reimagined. Growth happens in the soil, in people, and in cultural memory – and this architecture is built to hold space for all three.



Unlike typical cultural buildings that turn inward, Fusion Tree House opens onto the street with green planters and seating platforms, creating a welcoming, porous threshold. Here, the street becomes part of the programme, softening first impressions and lowering barriers to entry, both visually and socially. The building is part of a wider vision: a network of regenerative spaces that reconnect Oxford’s fragmented urban fabric through ecology, creativity, and shared care.



## Thresholds of Belonging

Designing to interact with the street

