

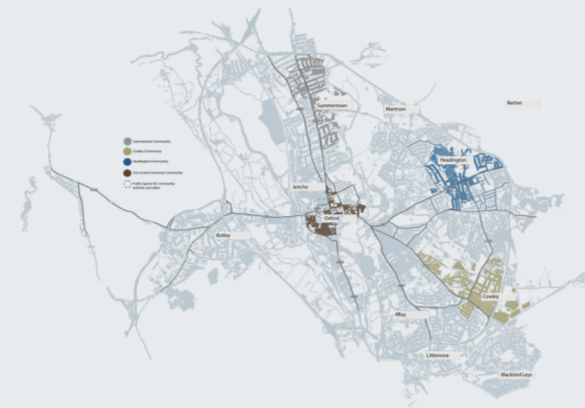


The design infiltrates the westgate, residing but also merging into different spaces of residence, creating its own subspaces



**Subspaces for reflection and storytelling**

Reflecting on the stories of local citizens allows visitors to gain insights into their own beliefs, values and experiences. Encouraging self-awareness and the stories resonate with their own



**Personal Growth and Insight**

Reflecting on the stories of local citizens allows visitors to gain insights into their own beliefs, values and experiences. Encouraging self-awareness and the stories resonate with their own lives.

**Critical Thinking and Analysis**

The reflection on the murals prompts visitors to analyze their own life stories, assumptions, biases and encourages a deeper understanding of the complexities with narratives.

**Empathy and Perspective-Taking**

Reflection on stories enables users to empathize with the experiences of others. It promotes understanding and compassion for diverse viewpoints on different community challenges and goals.

**Application and Action**

Reflection prompts users to consider how they can apply lessons and insights learned from the stories in their own lives and communities. Motivating them to spark a positive change, challenge injustice and contribute to meaningful social transformation.



The proposed intervention creates a blur between the street and Westgates transition hallway, where the design intention is to create an almost unnoticeable public pathway guiding visitors through different entrance and exit points of the structure and slow down the current 'funnel effect' it has.

By celebrating oxfords' local unsung hero community members, this proposed intervention acts as an insertion point where the most authentic parts of the local community is injected into Westgate, compared to otherwise being seperated from it on the other side of Westgates public/private partition space.

The structure boasts towering arches which together create an almost tunnel like experience, yet with its permeable nature, allows foot traffic demands to weave in and out reducing flow issues.



**The Issue**

Oxford hosts a vibrant demographic of diverse communities where nearly 28% of the population is of an ethnic minority, and a harmonious environment fosters strong communities and a sense of belonging.

- However, narratives of marginalized groups and local citizens have been often overlooked for a city so strongly integrated by community spirit.
- This oversight diminishes their valuable contributions and fosters disconnection among community members.
- Amidst the most globalized location of Oxford, Westgate, authenticity and localism risk being eclipsed, leaving a void in understanding what truly makes the city thrive.

The opportunity to amplify the voices and stories while nurturing spaces which celebrate authentic interactions and local culture, which can help to reclaim Oxford's identity and foster a deeper sense of belonging for citizens.

**Design Proposal**

A communal design, where the outstanding citizens of Oxford will be publicly displayed through a series of murals, to help in curating and refreshing the narrative construction process for members of the community in Oxford who visit the site, and feel inspired to spark social change from their encounter there. The facade acts as a space inserted into the Westgate, to bridge the gap between the private and public realm. The structure will serve as a meeting point for discussions and learning, in order to encourage others to actively participate in the community more effectively like the unsung heroes presented. The multi-functionality of the space, with an incorporation of furniture and delicate structural arches creates a harmonious space, fit to host collaborative and individualistic spaces.

**The brief requirements**

To design and curate an interactive facade, which inserts itself into the Westgate shopping mall in Oxford City Center; redefining the conditions of public participation and knowledge. The multi-functionality of the space, with an incorporation of furniture to host collaborative and individualistic spaces where meeting spaces for discussions and learning can take place.

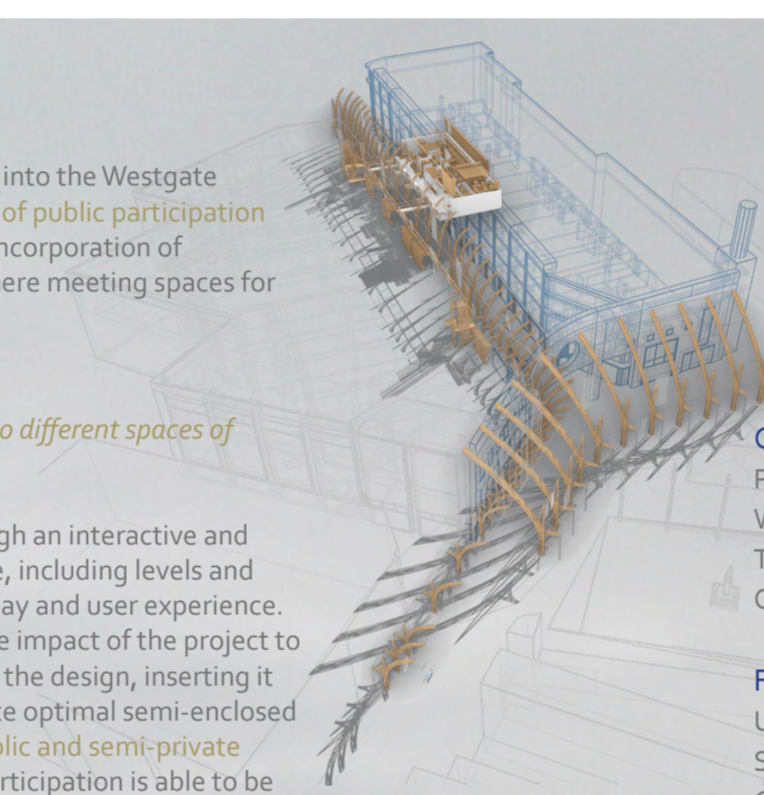
**Design aims to create a social setting**

The design infiltrates the westgate, residing but also merging into different spaces of residence, creating its own subspaces

A space redefining the conditions of public participation through an interactive and multi-functional space. It acts as an intervention into Westgate, including levels and functional furniture to assist in the curation of a public display and user experience. The atmospheric qualities and flow within spaces is vital for the impact of the project to be carried through. The decision to create a linear approach to the design, inserting it within the most narrow space of the front of Westgate to create optimal semi-enclosed spaces and generate a series of transitory spaces, merging public and semi-private realms through the incorporation of furniture and public participation is able to be realized within the multi-functional spaces created on all levels.

**Assisting Oxford's local communities**

Realizing the 'Thriving Communities Strategy' by Oxford City Council, through aiding in challenging and refreshing the narrative construction process of the community of Oxford, further impacting community involvement and pride.



**Ground Floor zones**

- Public Entry zones
- Welcome Space
- Transitory Archives Space
- Observation zones

**First Floor zones**

- Upper level transitory space
- Social Cafe
- Communal workspaces
- Transitional workshop spaces
- Private work rooms
- Immersive Archives

**Second Floor zones**

- Public Forum
- Interactive Digital Archives

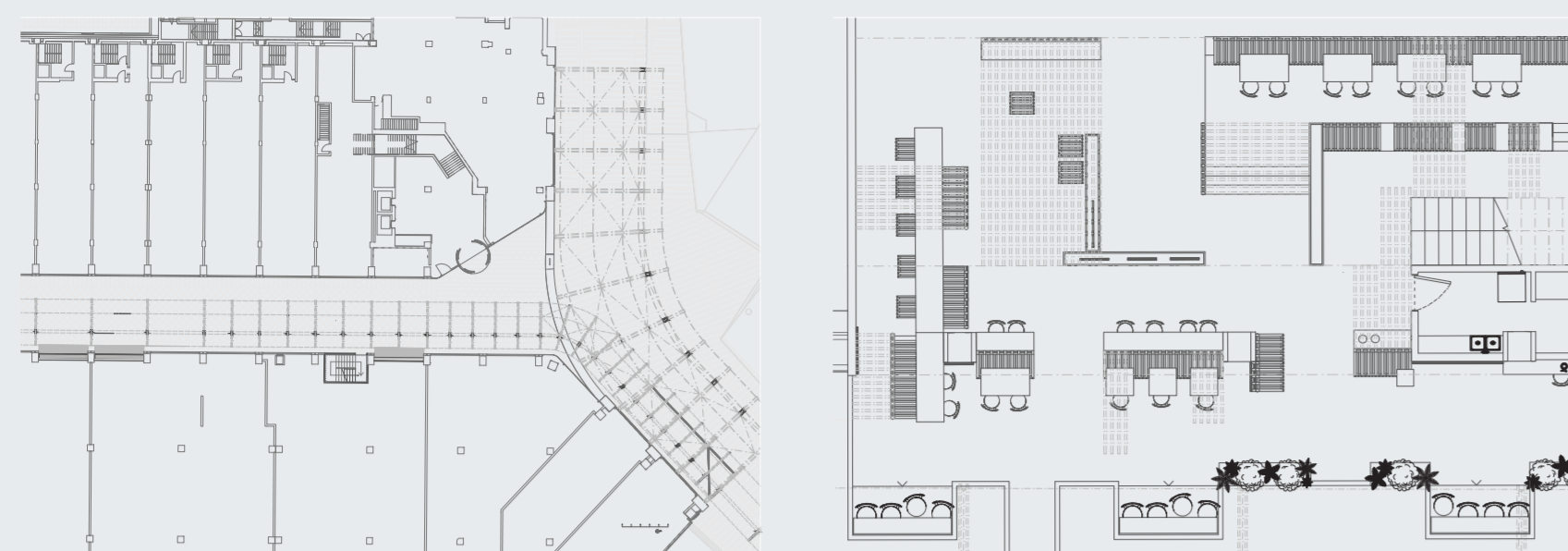


# Community Chronicles

## Public Tributes for Social Change

Daniella Jeanne Le Roux





# Representation and model making

Working through numerous scale models and technical modeling



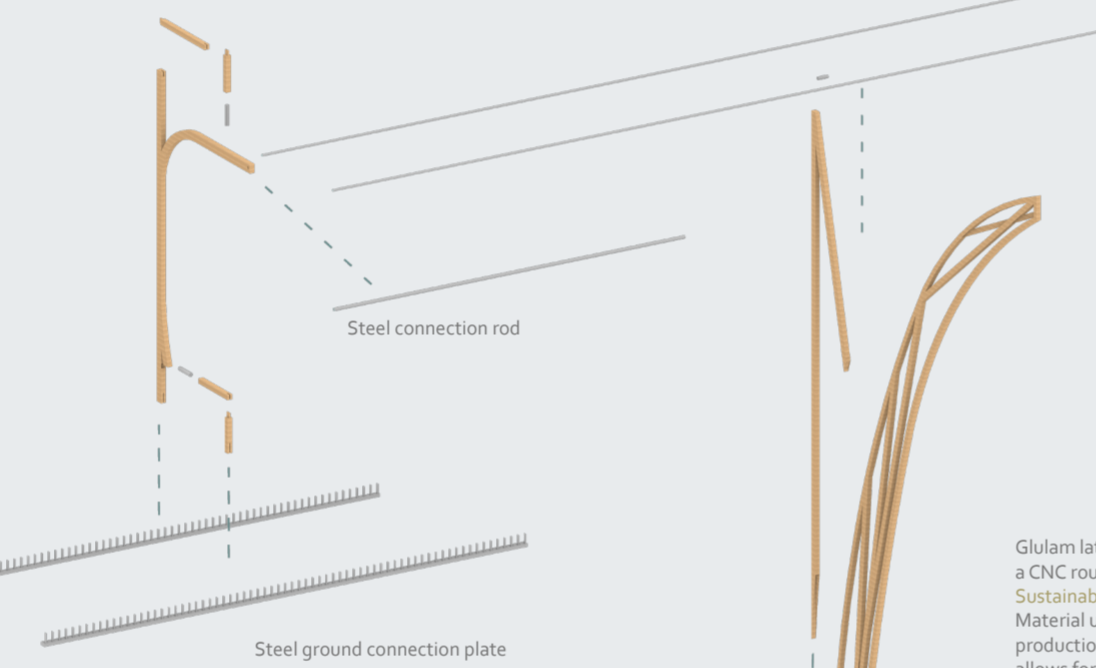
## Atmospheric Lattice Structures and Exposed Timber

Playing with shadows as an intangible material and creating warmth within a commercial space

When creating the detail connection points, it was crucial to maintain seamless and dainty effects, such as through the sunken timber connections, or tension rod cables and concealed joints. The overall design explores a pre-fabricated modular system where each component can be re-used and flatpacked for installation and storage.

Timber framed furniture modules

Steel tension rods and cables for arch supports



Steel connection rod

Steel ground connection plate

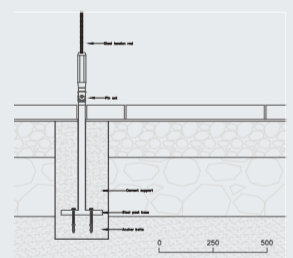
Translucent fabric mural

Glulam lattice trusses cut and shaped using a CNC router  
Sustainability commitment  
Material usage minimized through production and structural integrity which allows for future reuse

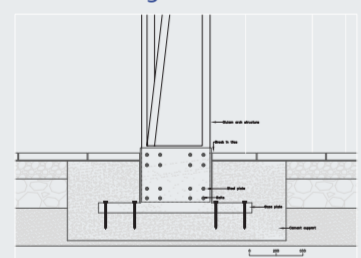
Steel cable clamps and tension rods for mural hanging

Sunken steel connection points for arch support

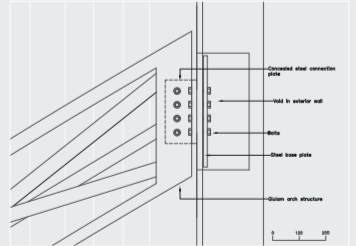
'Exterior arch cable connection'



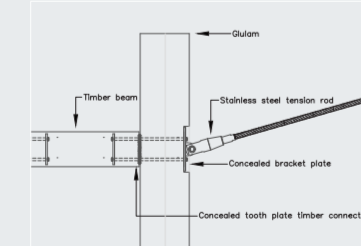
'Exterior arch ground connection'



'Arch wall connection'



'Arches tension cable connections'



## A social Cafe and communal digital archives

The social cafe and public workspaces over the first and second floor create a relaxed and informal atmosphere where social interactions can be better facilitated. Additionally, the forum on the upper level fosters a sense of shared experience while the overall design is accessible and encourages spontaneous interactions.

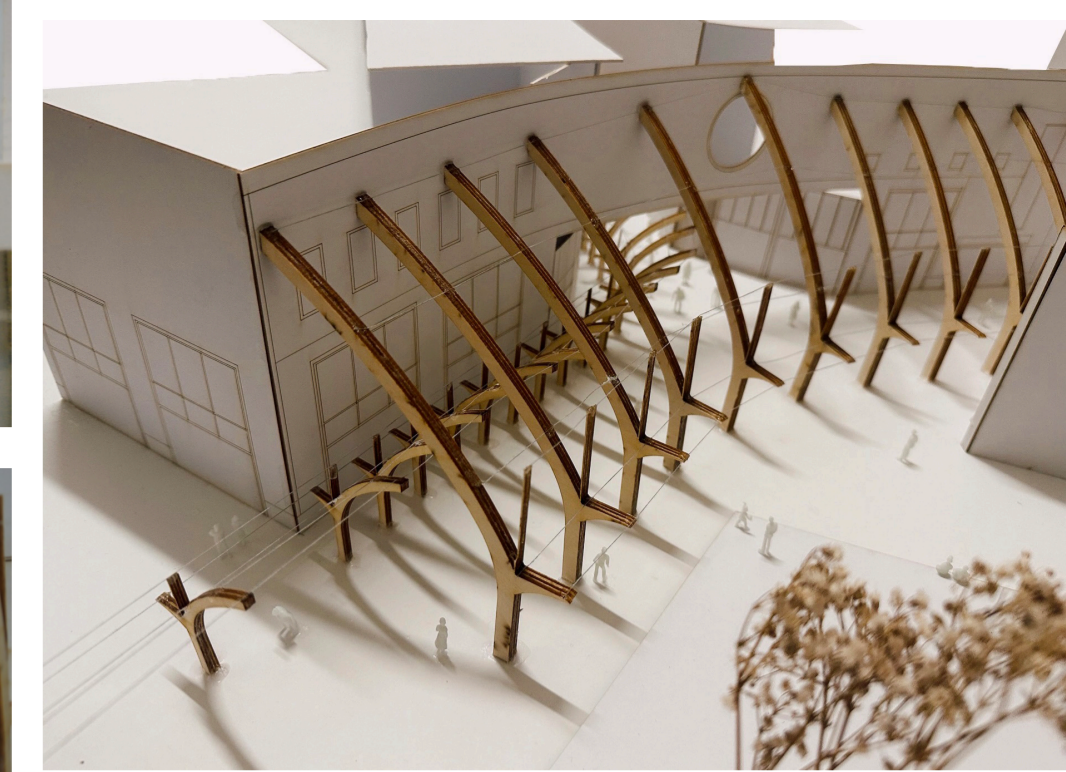


## Bonn Square as a public space for gathering

The city centre of Oxford has always been a focal point for community gatherings in demonstrations, protests, political rallies and organized events. Amongst the public spaces are the University Colleges whom actively take a part in the social movements and activism seen throughout Oxford's local communities and demonstrations. Bonn Square offers a unique space where community members can be heard, and social change fostered.



## 1:100 scale section site model



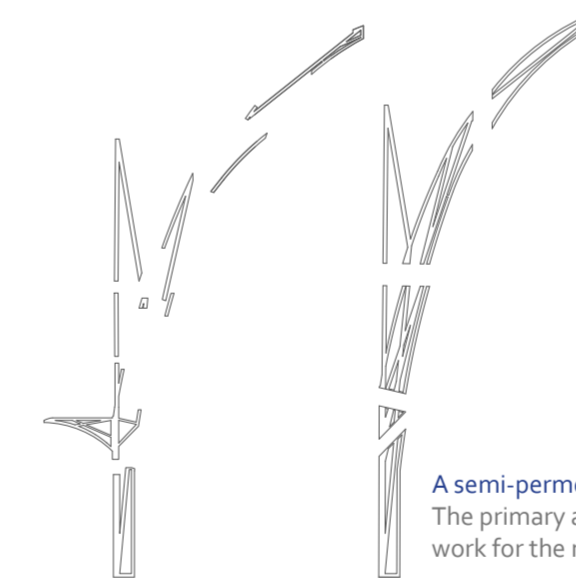
## 1:50 scale section model



## Digital archives and mural interactions

- Technological intervention to digitize information about the outstanding citizen's of Oxford and their stories
- Digital archives are more accessible and thus convenient for the public to obtain
- Digital archives system allows for personalization for each user, giving optional language changes, videos, text or further information once the QR code on the mural is scanned

## 1:5 scale final tech prototype



Structurally sound and sustainable design approach  
Continuous development of the initial concept to the current end result indicated the importance of loadbearing and tension points, where the design was refined to combat all environmental weaknesses and structural. Testing the CNC version helped identify faults, while also giving a fuller and thicker look, yet the laser cutting version created a sharp and thin desired look.

## 1:5 scale Laser cut concept test



## 1:5 scale CNC concept test

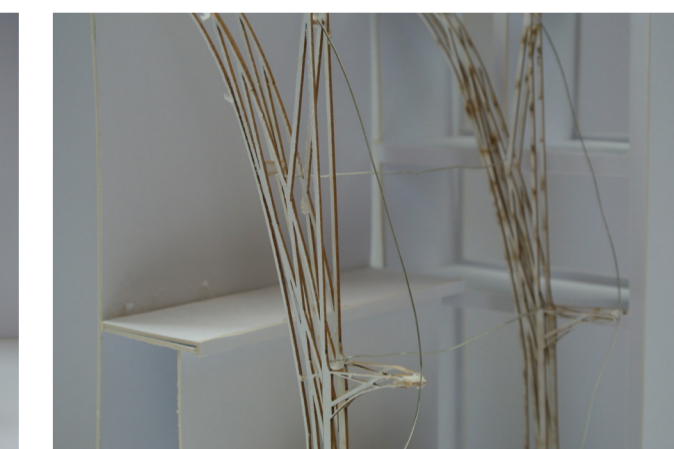
## A semi-permeable membrane structure

The primary arches structure creates the main framework for the murals to be displayed from

A lattice structure inspired arch consumes the site, yet follows the grid pattern of the existing building, in order to minimize obstructions in front of shops. There is a better line of visions, due to the arches dainty and semi-permeable appearance. Through the technical mode, the complexity of the structure and its delicate nature are more evident, and components split up in order to indicate the structural integrity of each joining piece.



## 1:10 scale concept tech model



## 1:20 scale initial concept model

