

MARY KARLYNE MILO

Spark Incubator – Postgraduate Creative Hub

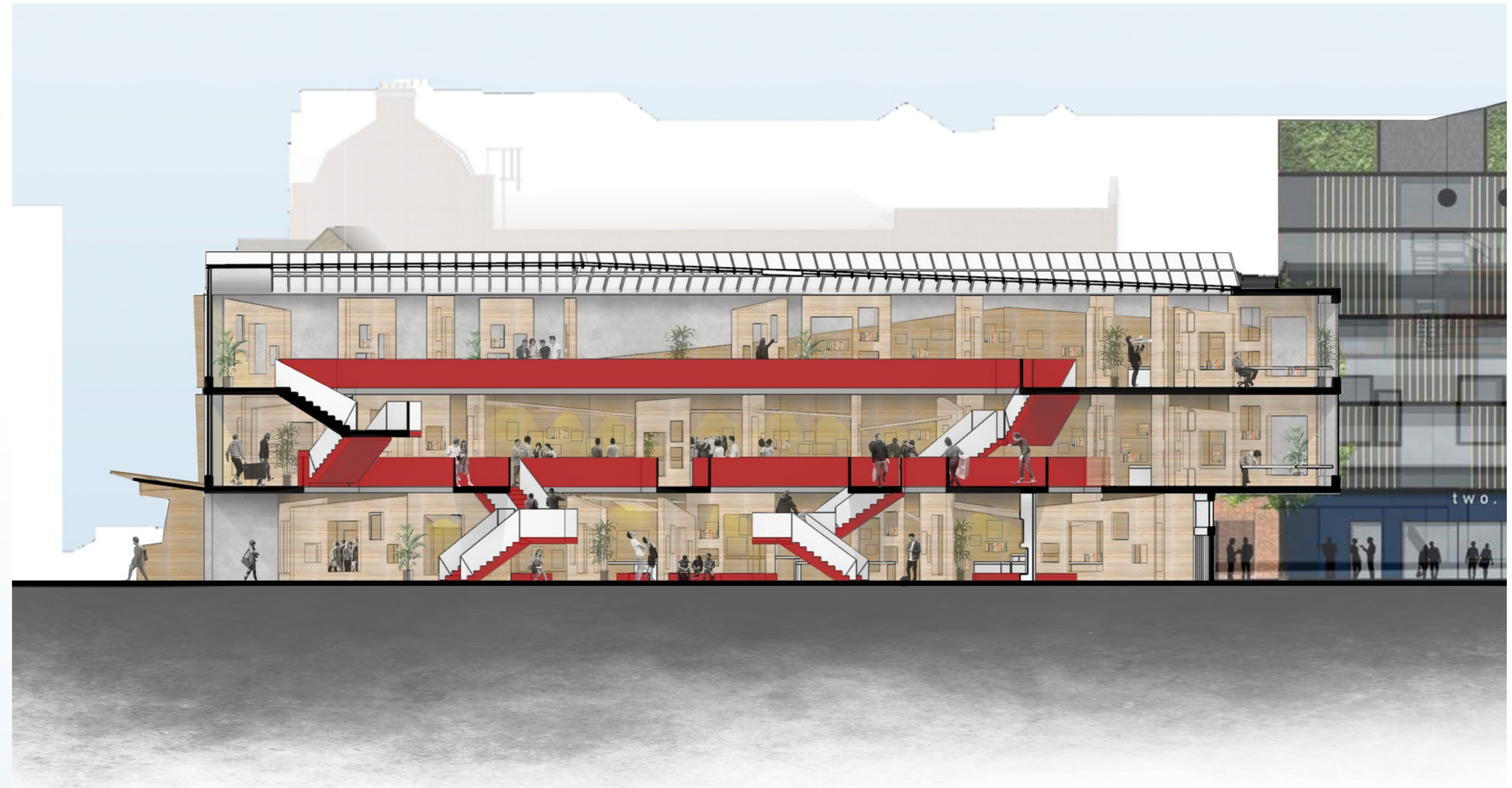
Brief

This brief is a development of our last semester's design of designing a creative incubator for postgraduate students. This semester is to design a community incubator in the city of Oxford in The Clarendon Shopping Centre.

The project 'Spark Incubator' brings a different approach to corporate architecture firms where collaboration is key in creating a supportive and harmonious environment for designers to collaborate. Working with others and being surrounded by other designers increases productivity and decreases stress levels at work.

The name comes from the 'spark' designers have for their passion for architecture. The project invites creative designers who are burnt out from work in the typical and stressful environment of the architecture world.

“ALONE YOU ARE WEAK, BUT TOGETHER WE ARE STRONGER”



SOCIAL PROBLEMS WITH DESIGNERS

The built environment is a very competitive industry and comes along with many hardships and challenges. Architecture is a stressful world, especially in Oxford where it is known for its buildings.

LACK OF COLLABORATIVE PROCESSES

“Design-assist is needed almost more now than at any time in history, given the complexity and disparate groups that it takes to get a building constructed.”

- Zahner Company

PROGRAMME

- Guided tours around Spark Incubator
- Design competitions involving the council on improvements in the city
- Projects with young students going into university getting a glimpse of what architecture entails before enrolling.

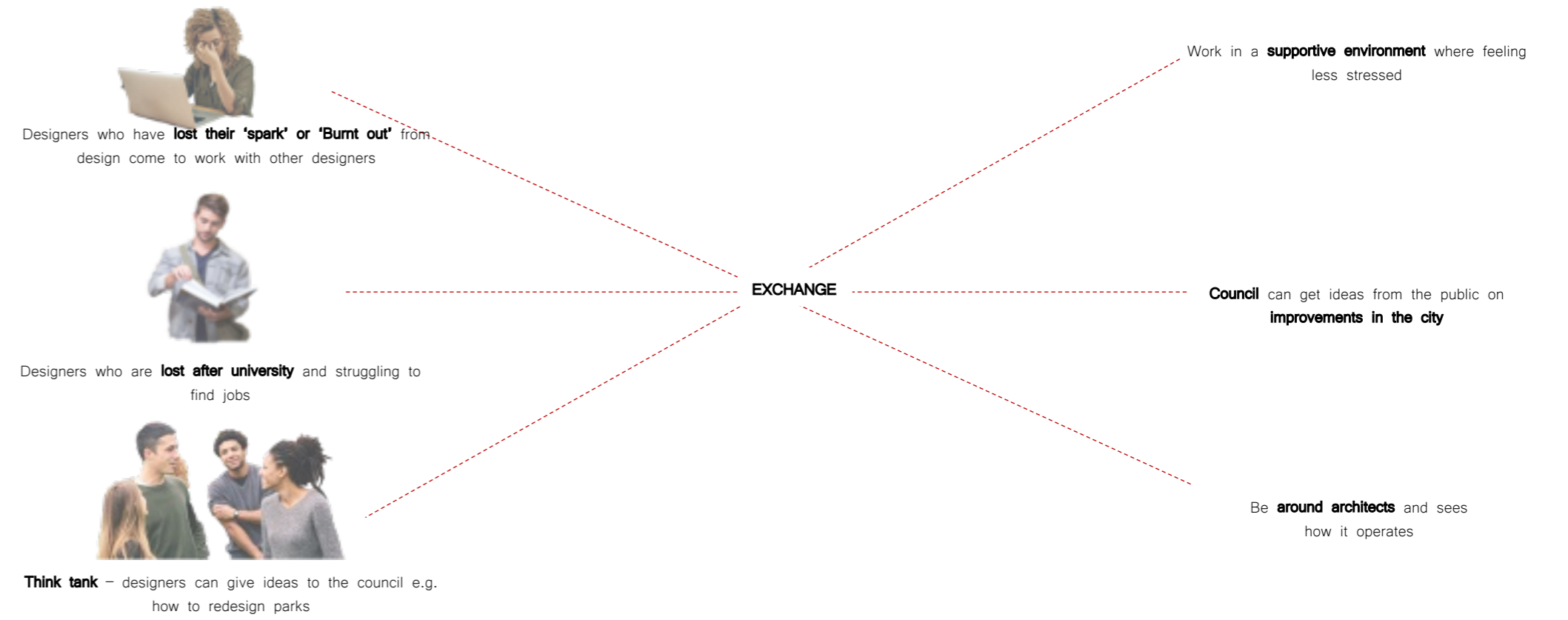


AXIOM LAWS OFFICES | NEW YORK | BHDM DESIGN | 2014

This office layout leaves no space for collaboration and completely excludes workers from others. The environment is very cold and banal. The desk layout and dividers do not help with the office coworking dynamic in sharing ideas.



Oxford County Council Westgate Shopping Centre Bonn Square St Peters College Site - The Clarendon Centre Carfax Tower Oxford Town Hall Oxford Union Golden Cross The Covered Market



COVID-19 NEGATIVE EFFECTS ON LIFESTYLES

“You are not a machine – the ideal of human productivity is not acting like a robot. Humans need rest, relaxation, sleep, and play in order to function effectively.”

- Josh Kaufman

COMPETITIVE INDUSTRY

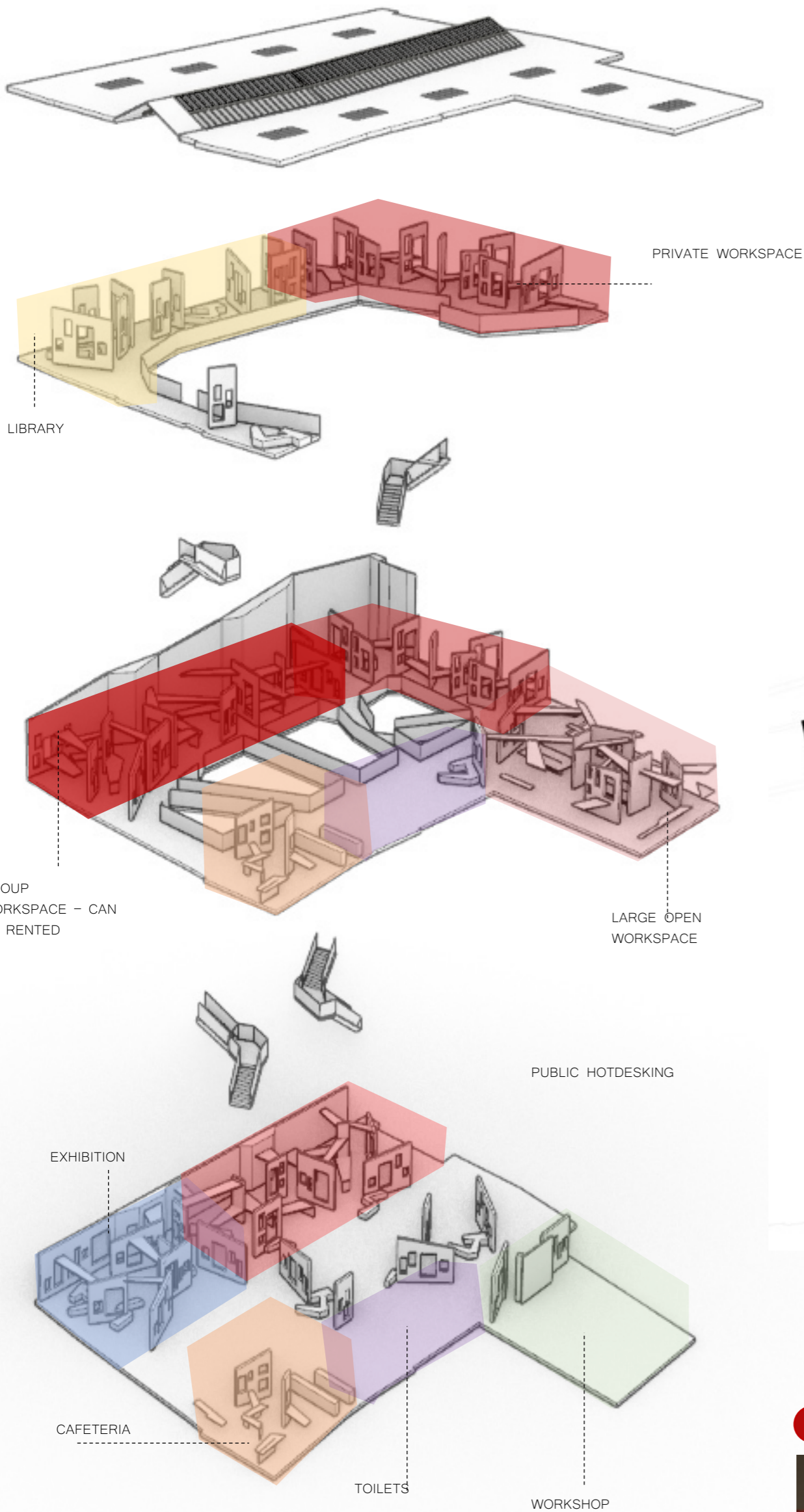
“If you want an easy life, don't be an Architect”

- Zaha Hadid

LACK OF AVAILABLE PROPERTY

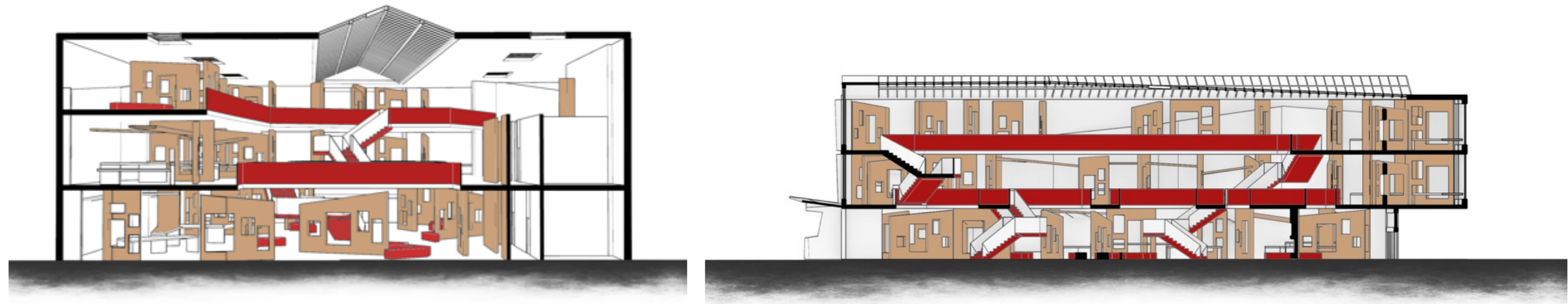
There aren't many spaces in oxford for designers to express themselves freely

PROGRAMME THROUGH THE BUILDING



SHORT SECTION

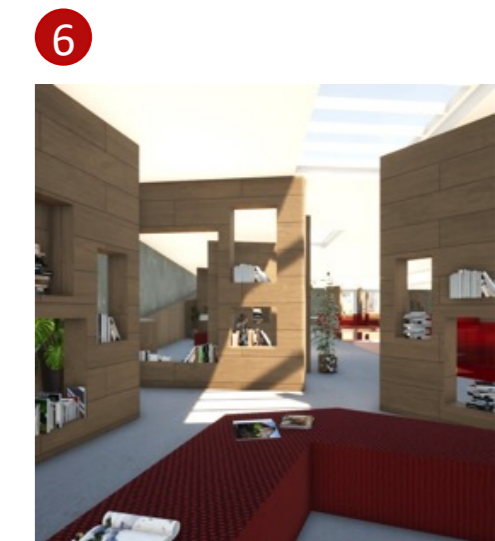
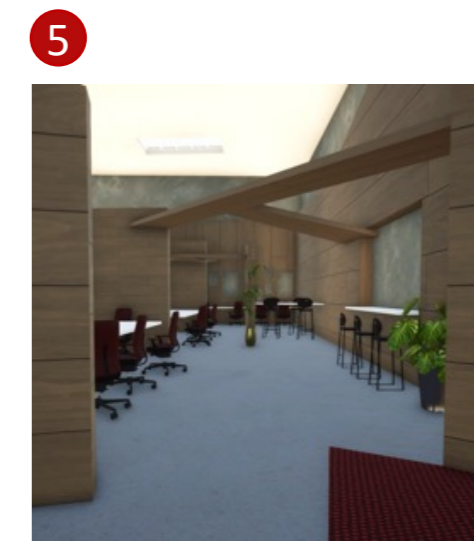
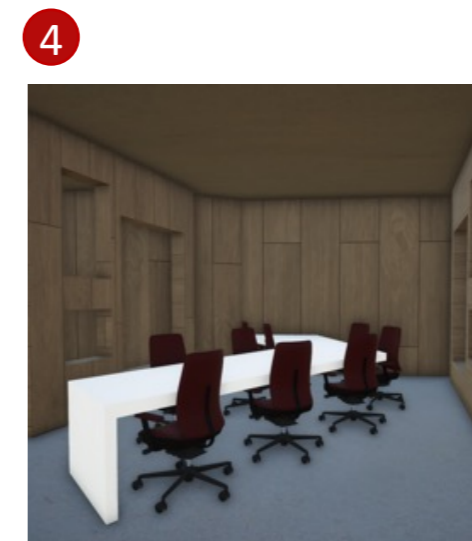
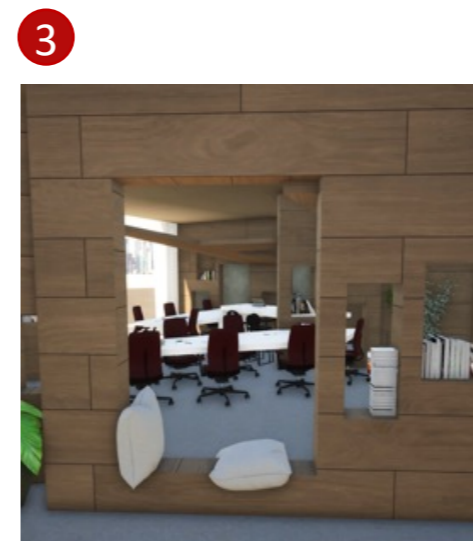
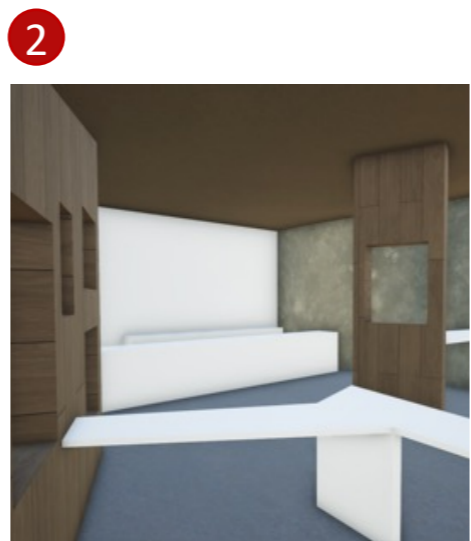
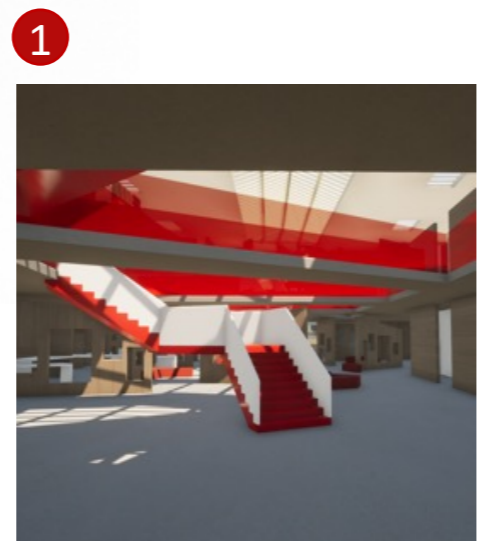
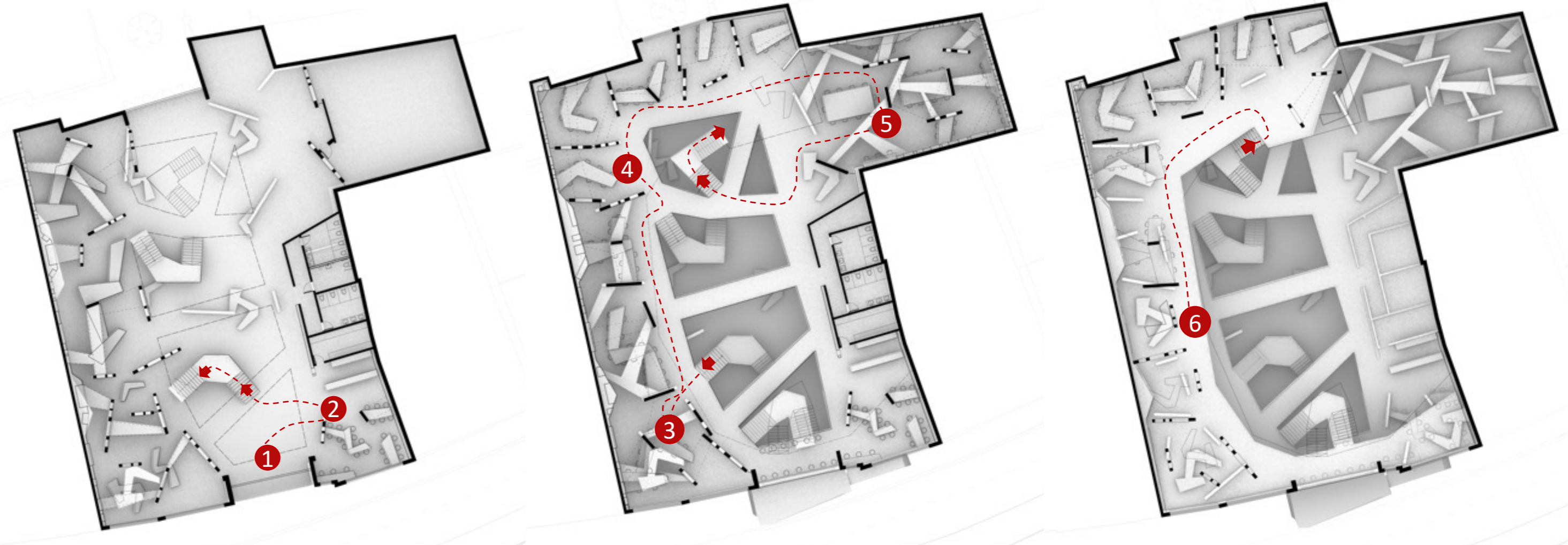
LONG SECTION



GROUND FLOOR

FIRST FLOOR

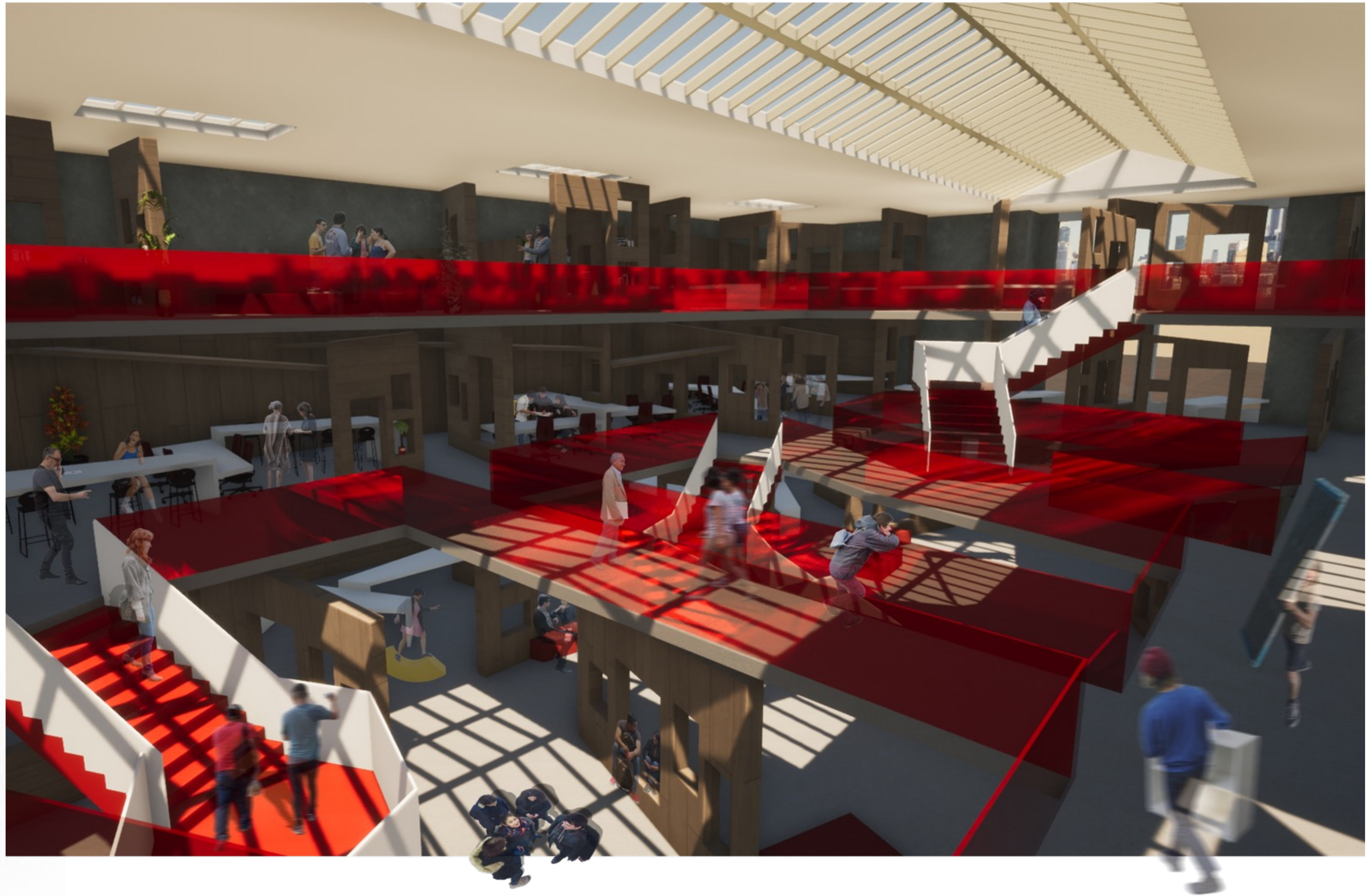
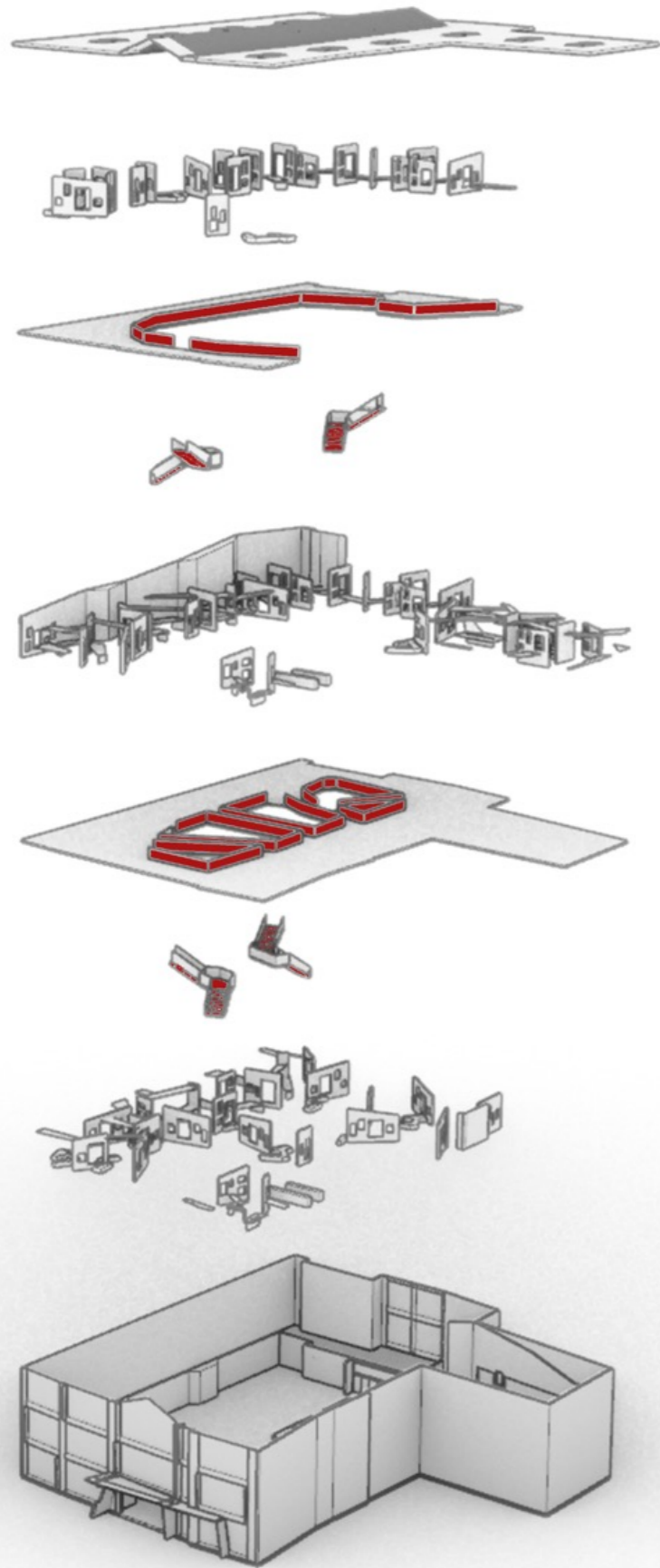
SECOND FLOOR



PROGRAMME THROUGH THE BUILDING

The environment of the Spark incubator is a more relaxing and collaborative approach for an architecture firm. The furniture allows people to work together and collaborate more with the support of others and decreases stress in designers.

Alone you are weak, but together we are stronger



INTERNAL HOT DESKING VIEW



ENTRANCE VIEW



INTERNAL CO-WORKING SPACE



FURNITURE



PERSONAL STORAGE

- LOCKS ONTO THE EDGE OF THE DESK AND CAN BE MOVED ANYWHERE ALONG THE TABLES
- IT IS LOCATED HIGHER UP SO IT IS WITHIN REACH AND CLOSER TO TO PUT YOUR BELONGINGS IN AND OUT WITHOUT BENDING DOWN TO THE GROUND



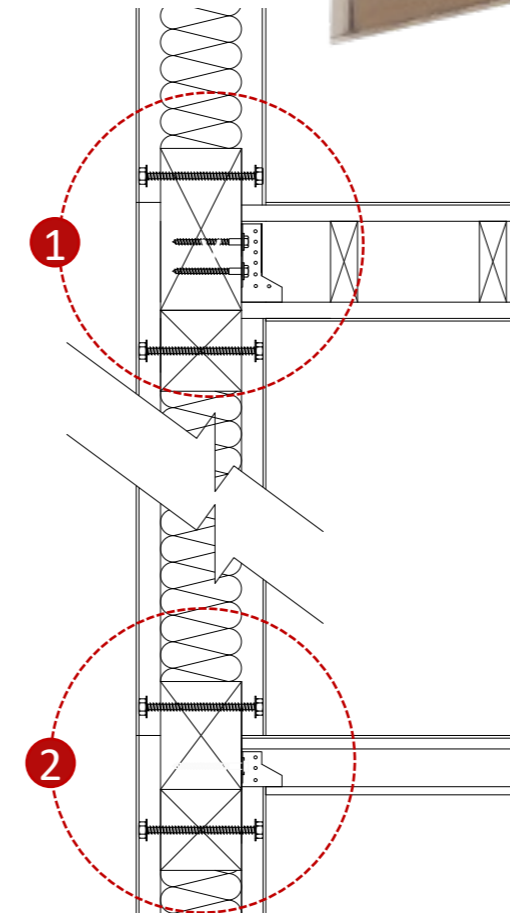
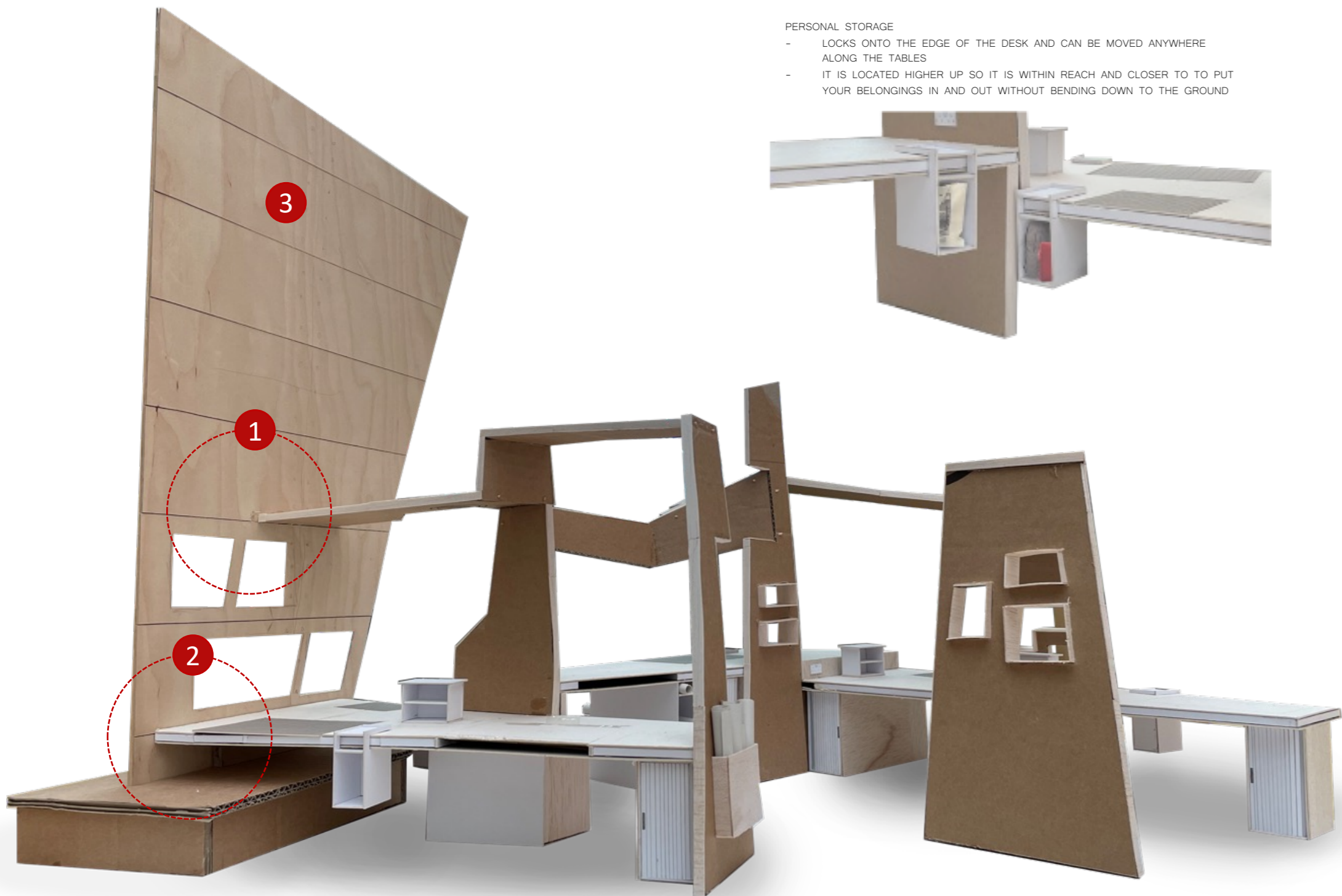
PANEL STORAGE

- USING THE PANELS AS MORE STORAGE LEAVES MORE SPACE ON THE DESK LEAVING A CLEAN AND SPACIOUS DESK FOR WORKING
- IT IS REACHABLE FROM BOTH SIDES OF THE PANEL AND ACCESSIBLE FROM EVERYONE



UNDER DESK STORAGE

- USING THE SPACE UNDER THE DESK TO ADD STORAGE FOR ANY MATERIALS AND EQUIPMENT FOR THE CREATIVE PEOPLE
- THIS OPTIMISES MORE SPACE ON THE DESK FOR WORKING



PANEL JOINT DETAIL

