

# LYN FRANCES GLORIA

## Unifying Design

Collaborative Multi-disciplinary Community Incubator in Oxford City Centre

The project 'Unifying Design' questions 'who designs the city?' and moreover 'who *should* design the city?'. The University of Oxford owns a lot of the land in Oxford City, and so people find it **difficult** to gain participation in the planning process for new buildings. This project therefore intends to tackle the problem that people in the community are **excluded** from the **design of the city**, and explores **participatory design** as a solution. Projects such as building new schools, housing, shops, library, health care centre, parks, recreational spaces, and any desired spaces, etc. can be proposed and implemented by the people from the local community. New built spaces are intended to create a **real community** in Oxford and to meet the functional needs of the locals.

The necessary expertise for this will come from both the University of Oxford and Oxford Brookes University. Located in the heart of Oxford, the community incubator will be a place for **collaboration** and will be organised as a **modern city council architecture department** where the local community can be more involved. This project promotes the notion that '**collaboration makes you stronger**'.



# Collaboration and Participatory Design as a Solution

## Community Incubator Users



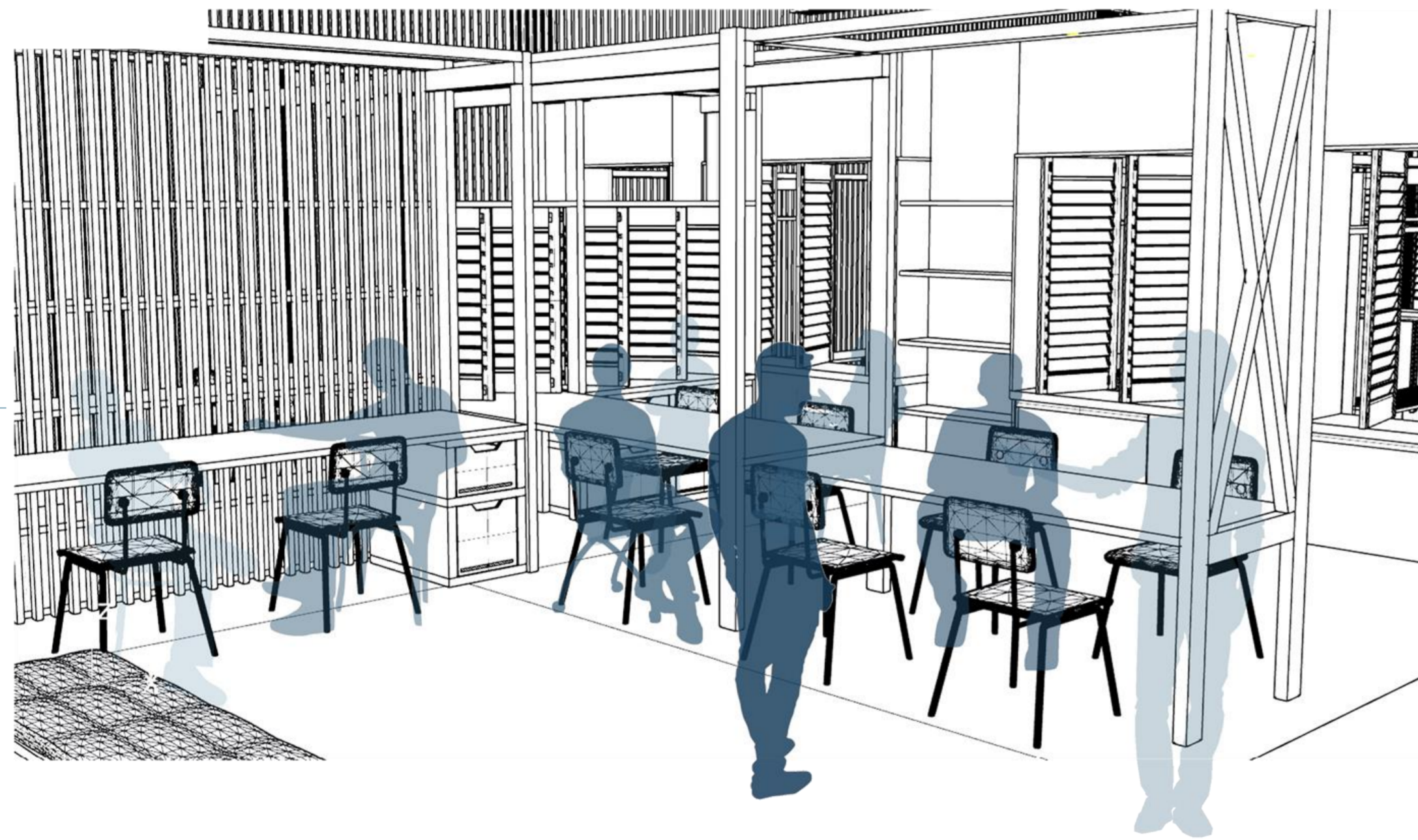
● Oxford Locals    
 ● Oxford City Council Members    
 ● Oxford Brookes University Architecture Master's Graduates    
 ● University of Oxford Graduates

## UNIFYING DESIGN ACROSS DIFFERENT FIELDS OF EXPERTISE

## COLLABORATION MAKES YOU STRONGER

8 Master's Design Specialisations within Oxford Brookes University:

- Advanced Architectural Design (AAD)
- Development and Emergency Practice (DEP)
- International Architectural Regeneration and Development (IARD)
- Research-led Design (RLD)
- Sustainable Building: Performance and Design (SBPD)
- Urban Design (UD)
- Design Studio Specialisation (DSS)
- Interior Architecture (IA)



The Oxford Union

Oxford University Members to gain planning permission in University owned land.

Oxford University Post-graduates:

- Psychology
- Fine Art
- Economics and Management



Oxford Town Hall and Council Offices

Oxford City Council Members to gain planning permission and to engage with the local community



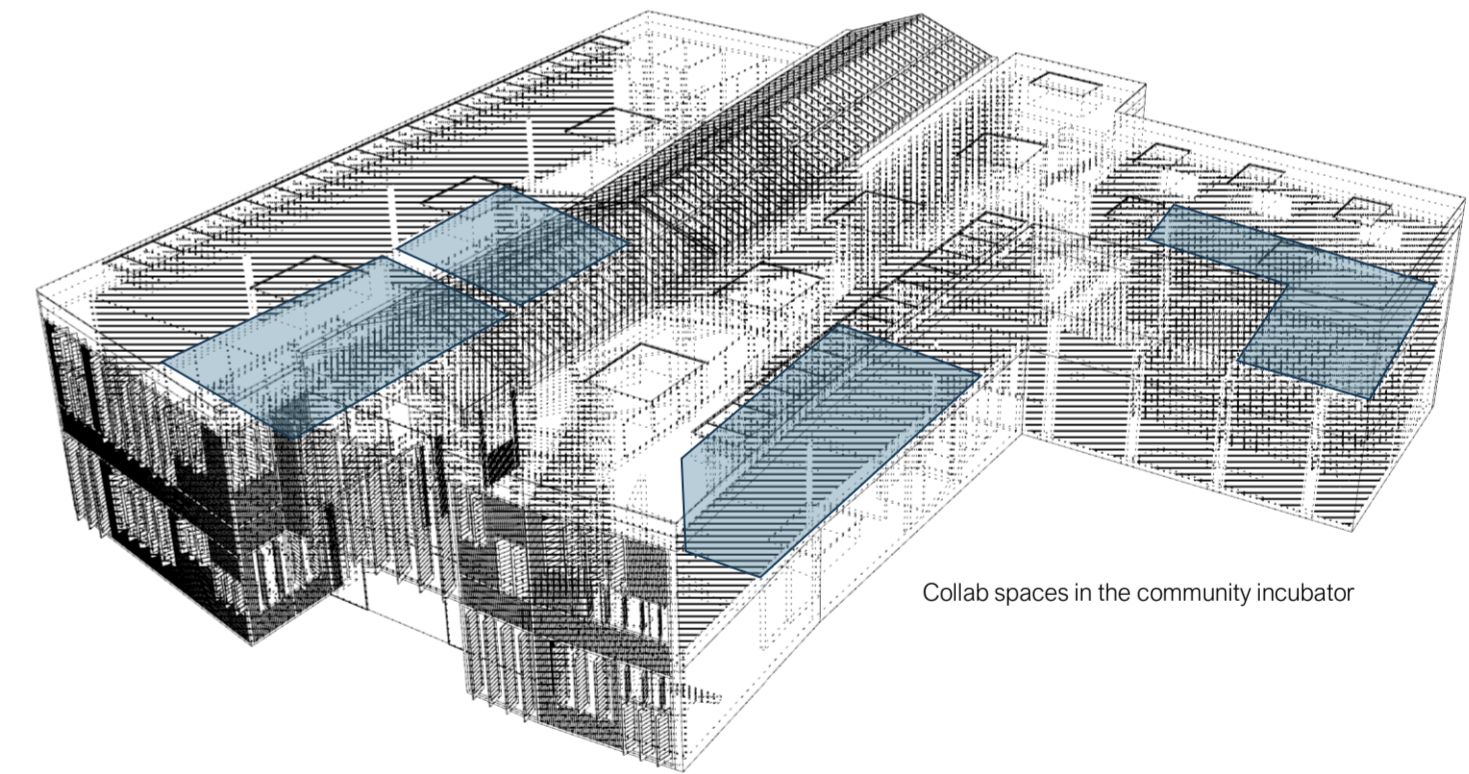
Oxford Brookes University

Oxford Brookes University Post-graduates:

- Master's in Architecture
- Interior Architecture
- Building Surveying



The site is located in the heart of Oxford City centre and is in close travel distance to community incubator users buildings.



Collab spaces in the community incubator



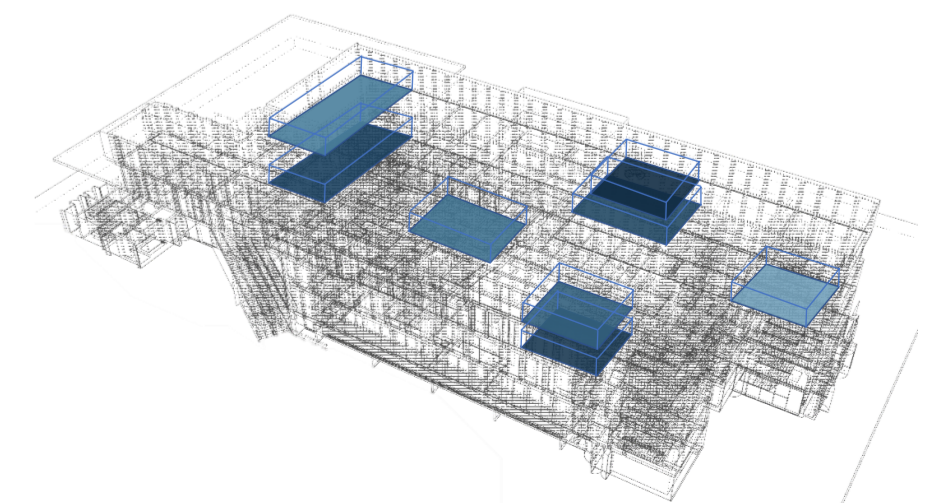
Exhibition Space



Conference Room / Lecture Theatre

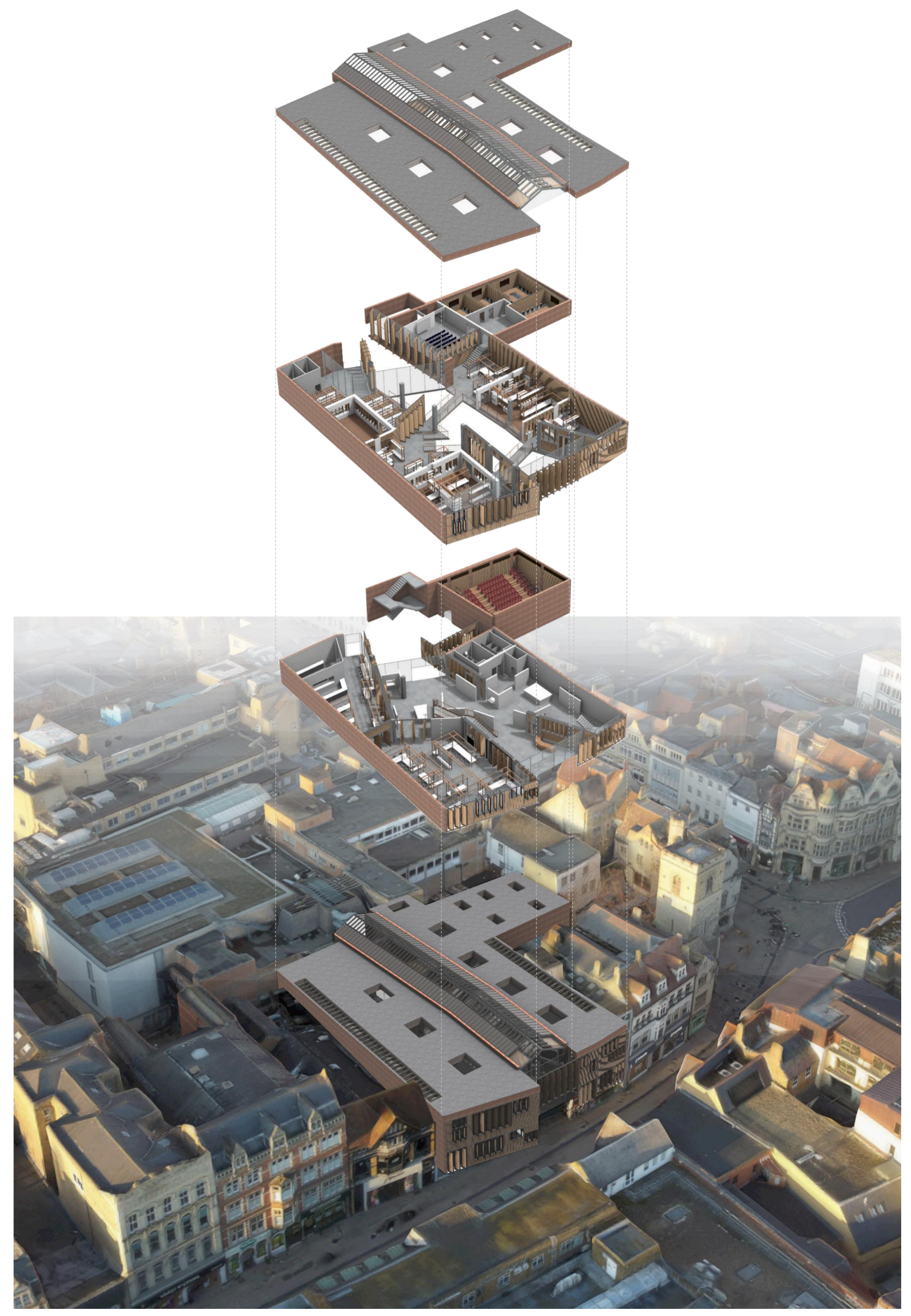
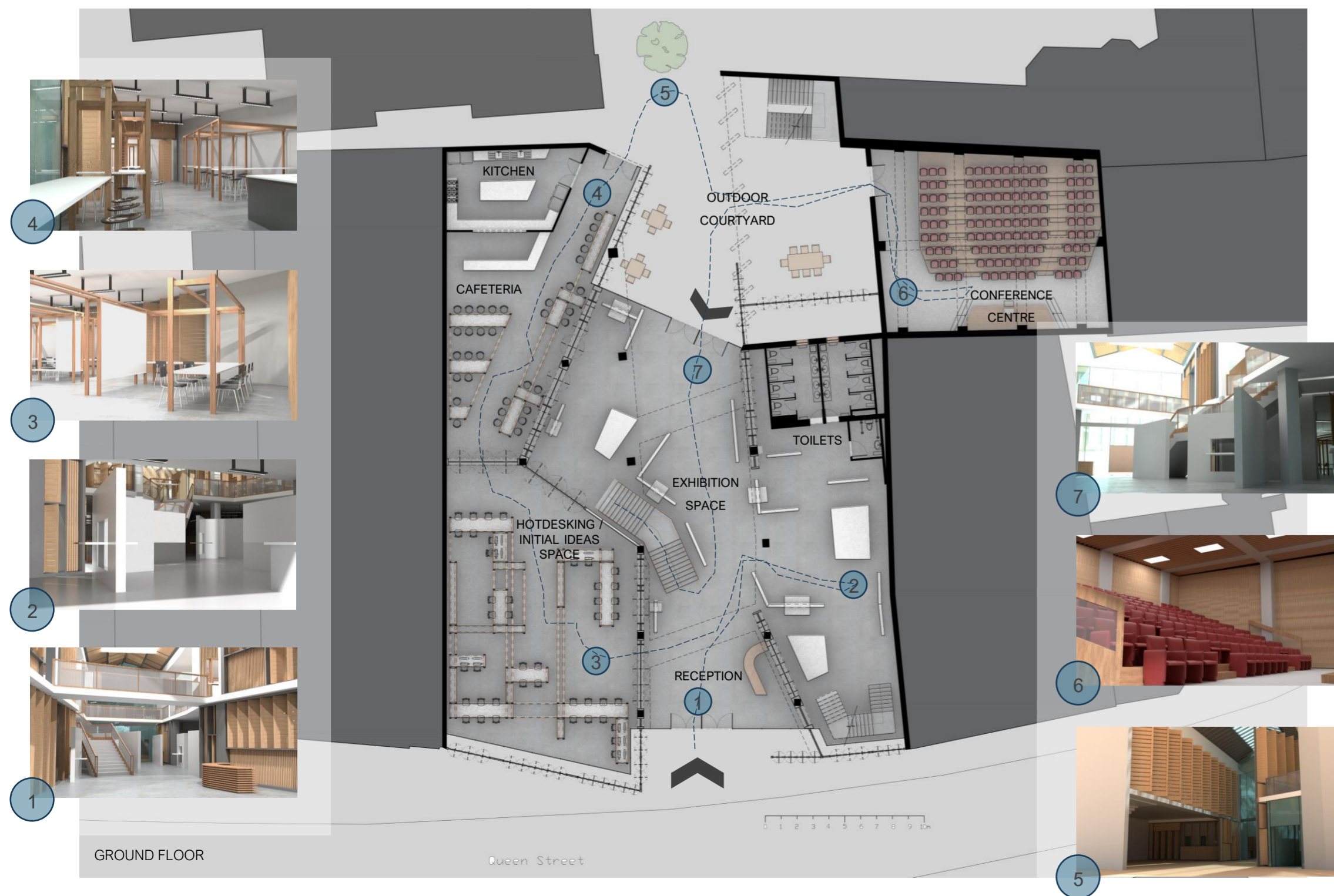
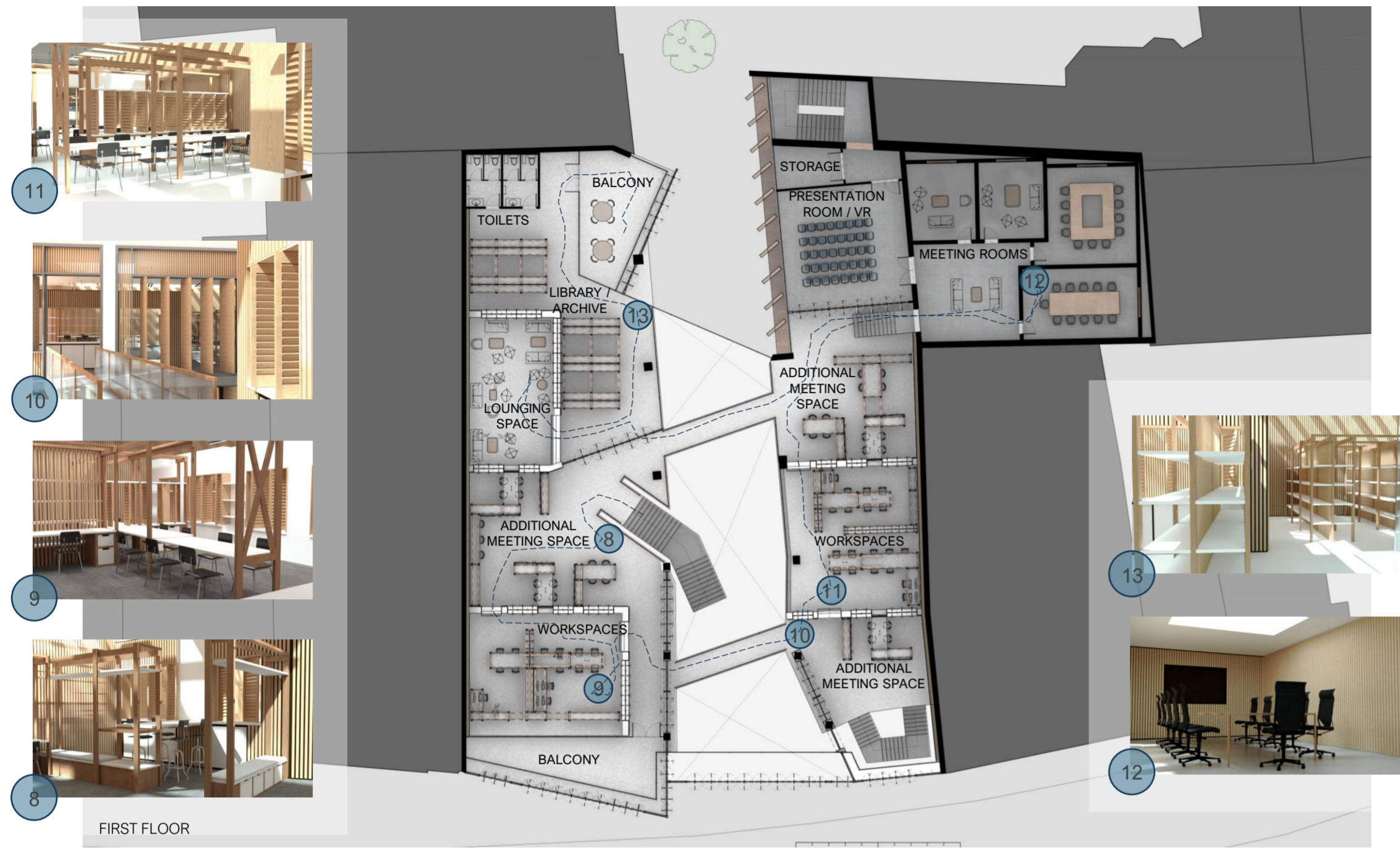


'Expert' Collaborative Workspaces

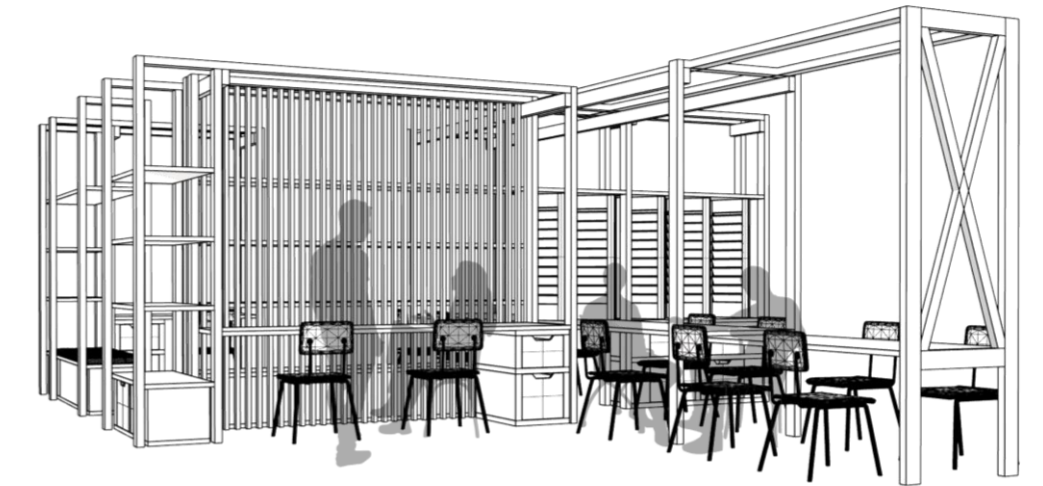
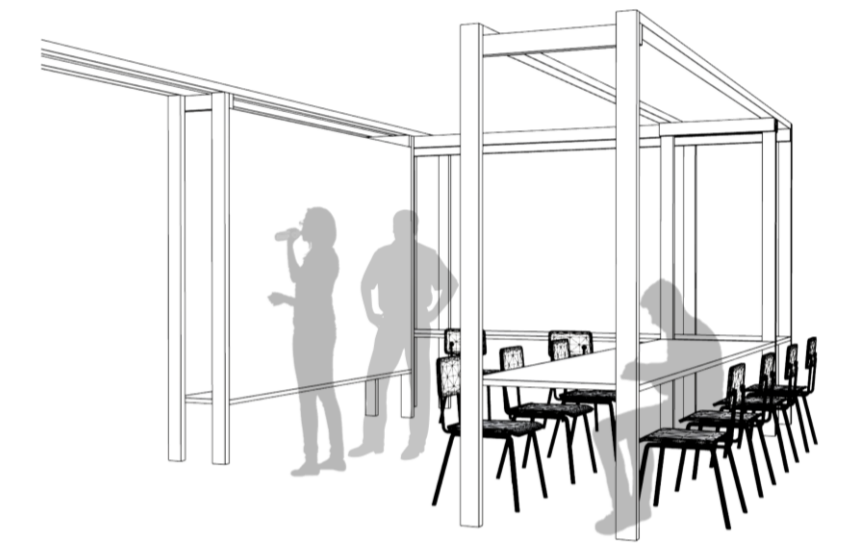


Segregation between the 8 Master's design specialisations within Oxford Brookes University, School of Architecture

# Journey Through the Community Incubator



**Building in Action – A Place for Design and Collaboration**



Long section drawing cutting through main functions of the Community Incubator building, including the (1) shutters wall partitions, (2) collaborative workspaces, (3) hotdesking area, (4) additional meeting/workspaces, (5) library/archive, (6) lounging space, (7) balcony, (8) cafeteria and kitchen space, (9) exhibition space.



Internal view of hotdesking/initial ideas space

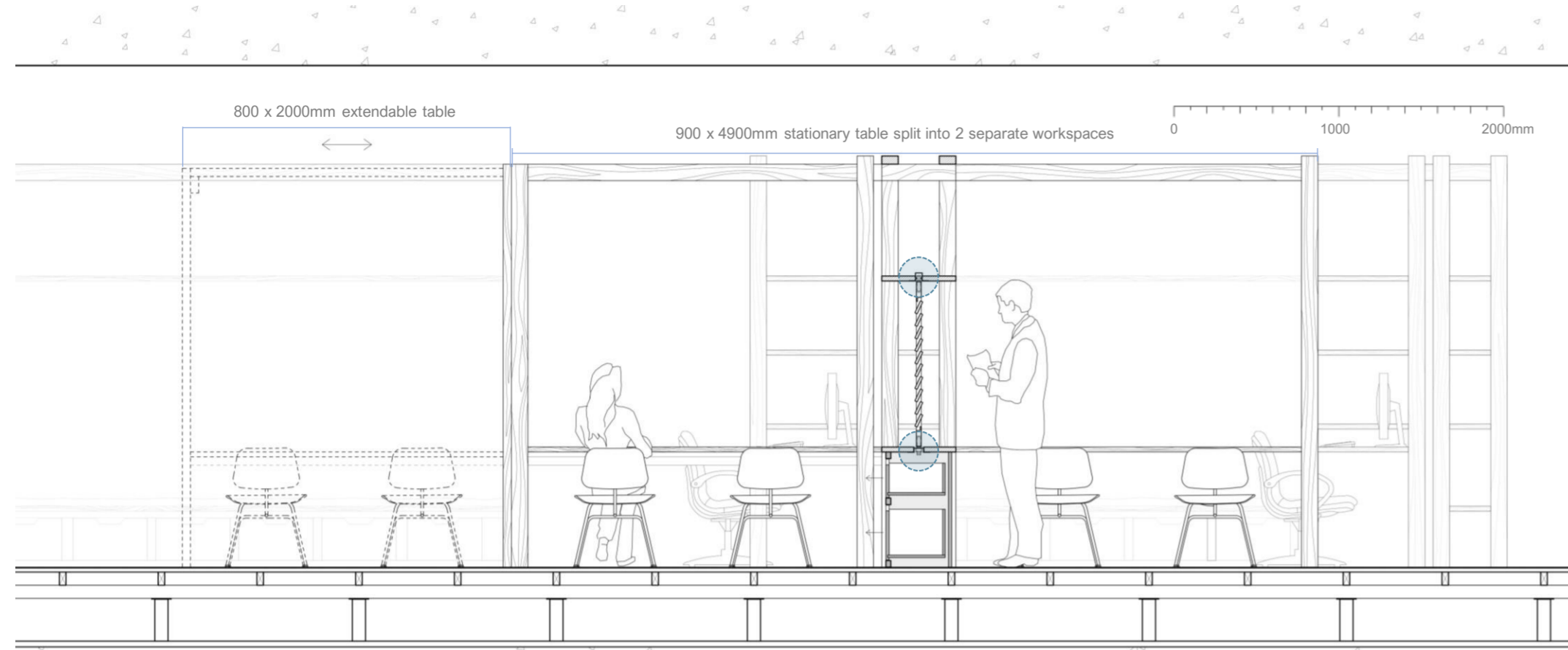


Internal view of collaborative workspaces

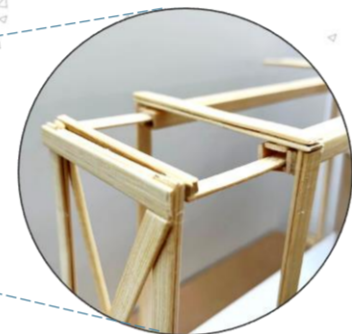
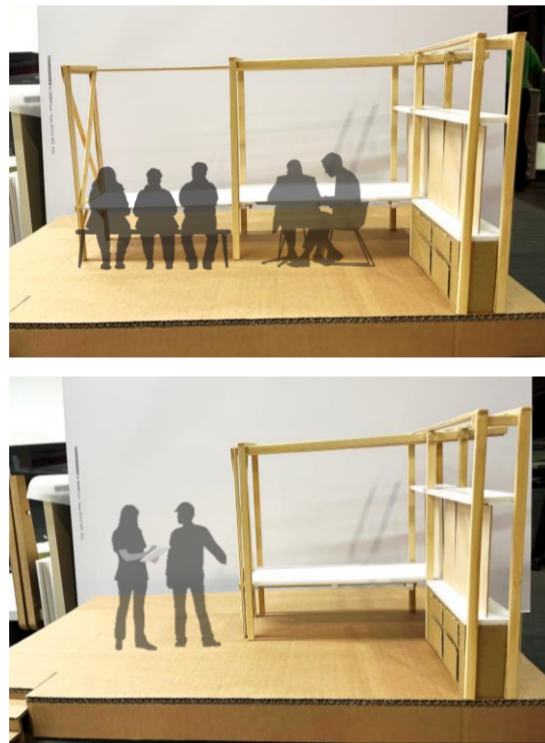


Internal view showcasing atmospheric qualities of the shutters

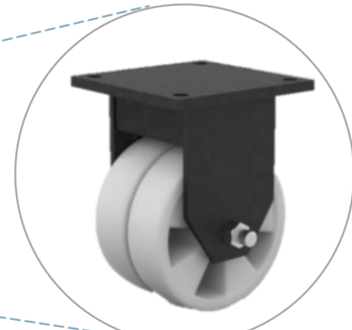
# Creating Multi-functional and Flexible Workspaces of Collaboration



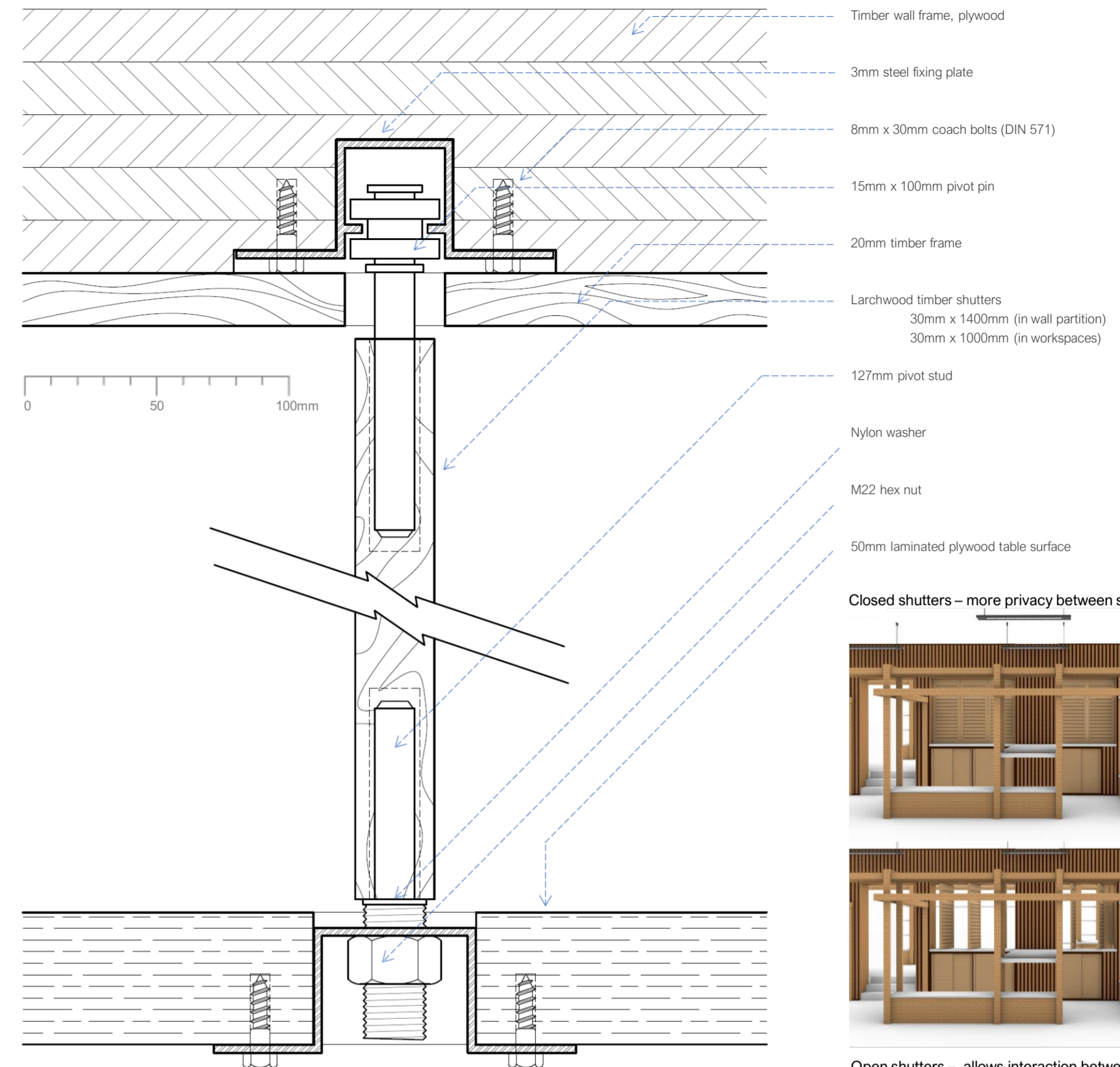
**Furniture elements:** 360° pivoting shutters and multi-functional furniture within workspaces. Shutters are implemented to tune levels of visibility and therefore levels of privacy between workspaces according to the needs of the users. Shutters are also significant for its atmospheric qualities. Multi-functional furniture as a simple, linear, timber structure consisting of desk tables, shelving, seating, and storage drawers. Workspaces are made flexible with its sliding table. Tuning the size of workspaces allows users to use the floorspace for other activities such as creating large models while the extendable table allows for more desk collaboration space between the design disciplines.



Hollow overhead frame to support sliding structure



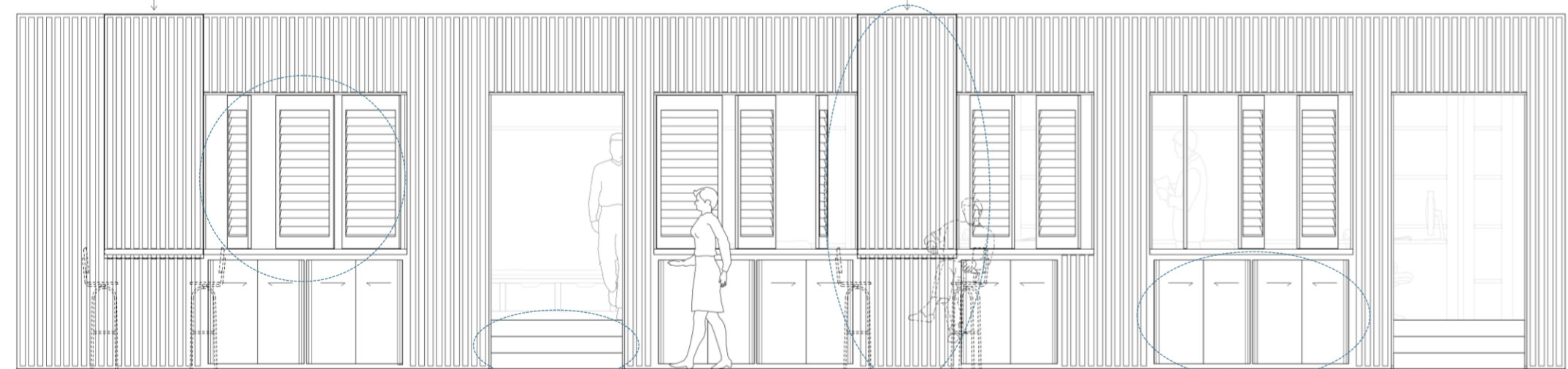
Fixed double wheel castor



Closed shutters – more privacy between spaces



Open shutters – allows interaction between the spaces



Shutters

Workspace on 450mm raised platform

Wall-mounted folding table for meeting space

Sliding door cabinets



Hotdesking/Generating Initial Ideas space



'Expert' collaborative workspaces



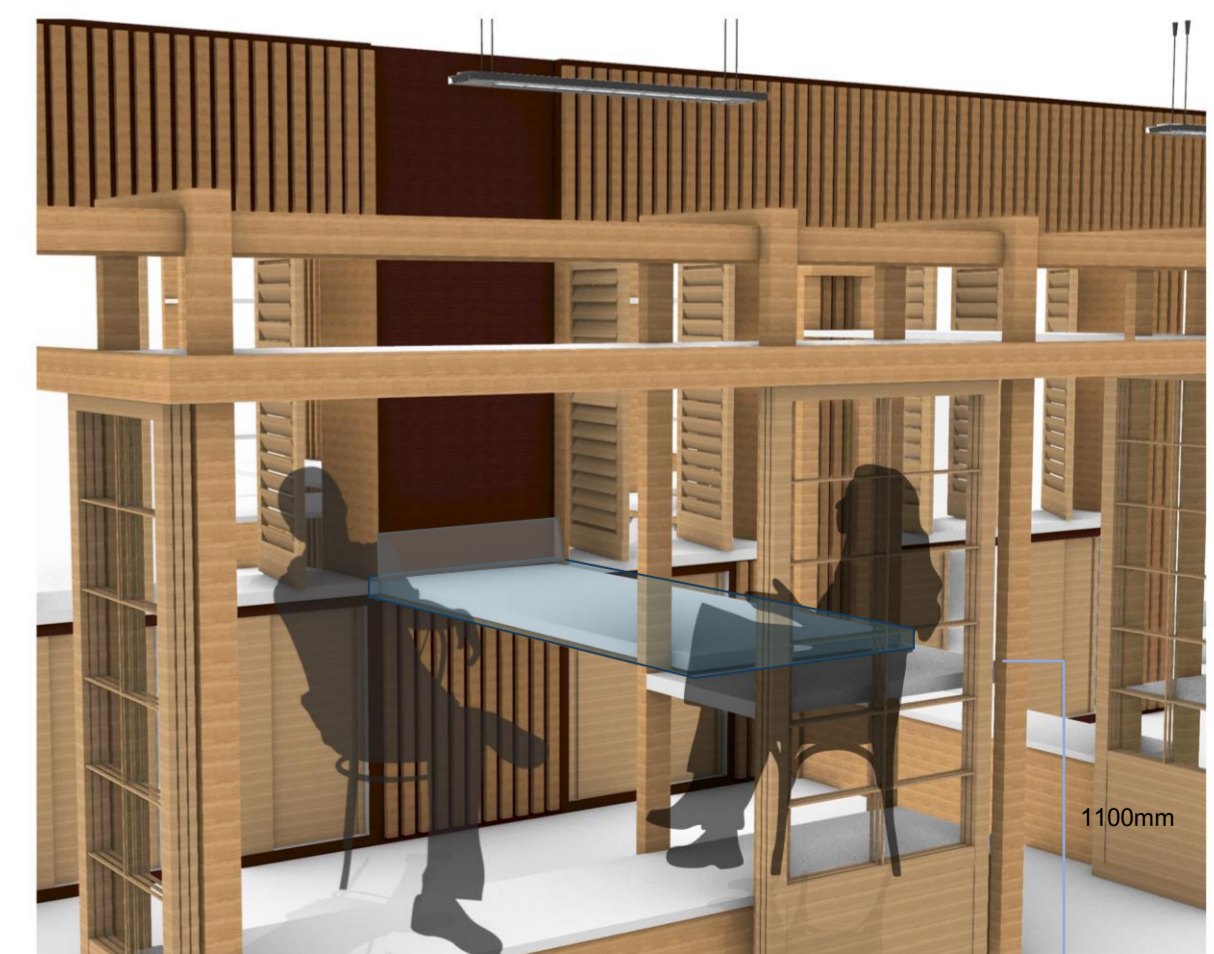
Additional meeting spaces



**Additional meeting space** adjacent to design workspaces to allow for a meeting space between designers and other experts.

Façade of table camouflages into partition wall and pulls down to create a tall heighted table for **more collaboration space**.

**Sliding doors** with frosted glass allows for more **privacy** around the meeting space if needed.



Tall, bar height table to create a meeting space.