

ANA CARINA LACATUSU

RECLAIMING OXFORD

Design Centre for Community-Led Public Spaces

Social Context: Oxford is regarded across the globe as one of the most prominent university cities, thanks to its rich history dating back to 1096. For the local people, however, the University is known as the dominant private sector that owns a substantial percentage of the city's buildings and land. The quality of living and the way the members of the university experience the city compared to the rest of the people have created a clear division between the social groups of the city.

Aim: The design center's goal is to break down all barriers between people and include everyone in changing the city for the benefit of the whole community.

Method: Reclaiming Oxford focuses on the revitalization of the public spaces in the city by involving the local community in the process of designing a better social environment. As a design hub, the centre will provide a team of architects looking to foster long-term relationships with the local population in a democratic environment and collectively improve underlying issues that make certain areas vulnerable.



Existing: Located in the heart of Oxford, the site, the Clarendon Shopping Centre, has been struggling to become an welcoming environment for the locals.

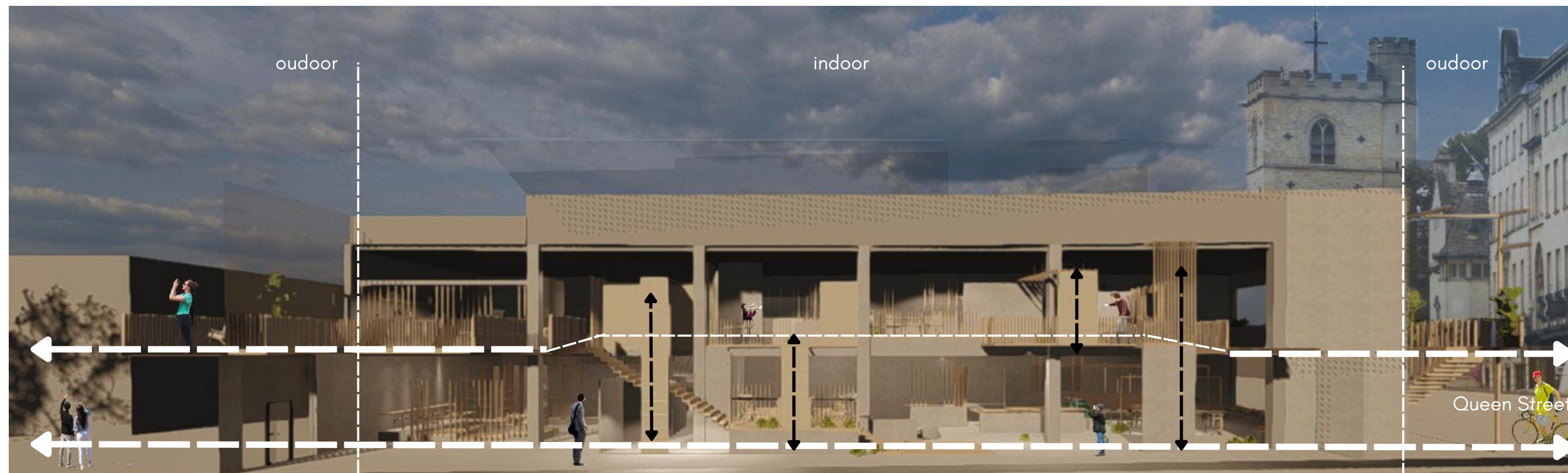


Proposed: The new Community Centre will be the start of a collective design approach that aims to turn the existing city into a more vibrant place by enriching its current features and turning them into community-friendly hubs

A SUSTAINABILITY STATEMENT

The delicate nature of the design and take on the building make it a mission for the existing to be preserved and the new furniture to only gently change the features of the site.

DESIGNING FOR A BETTER FUTURE

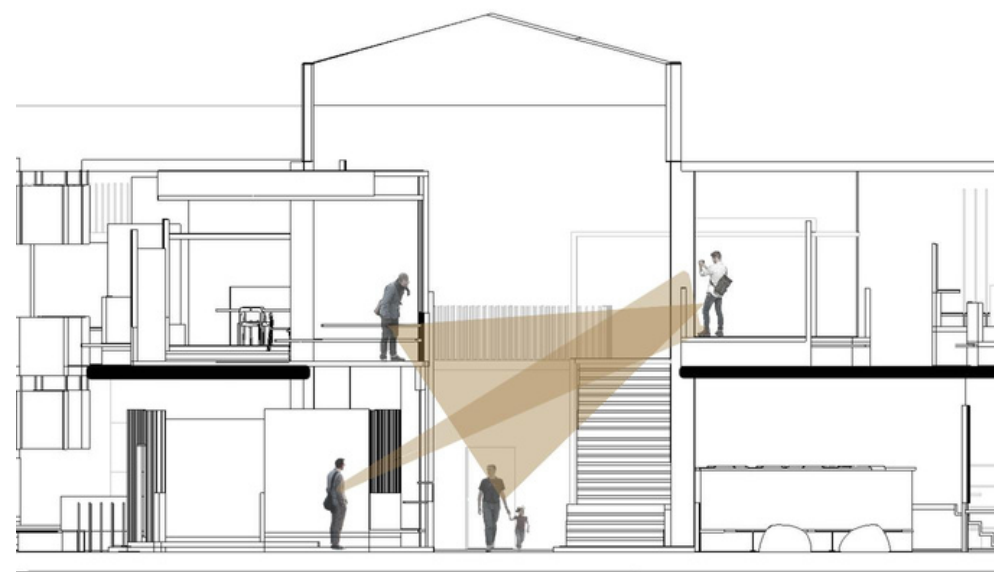


Connection with the Public Space

Following the Council's Scheme to turn Oxford into a green, emission-free city by 2030, RECLAIMING OXFORD will carry the same values in its process of work with the community and overall experience of the space: extending outside but also enabling open visual communication between the floors and indoor-outdoor space.



ZERO EMISSION ZONES



**Activating the Intangible Field
The Void as Visual Connector of People and Spaces**

By not significantly altering the existing building, the "void" becomes a social activator, giving, therefore, purpose to what is normally unused space.

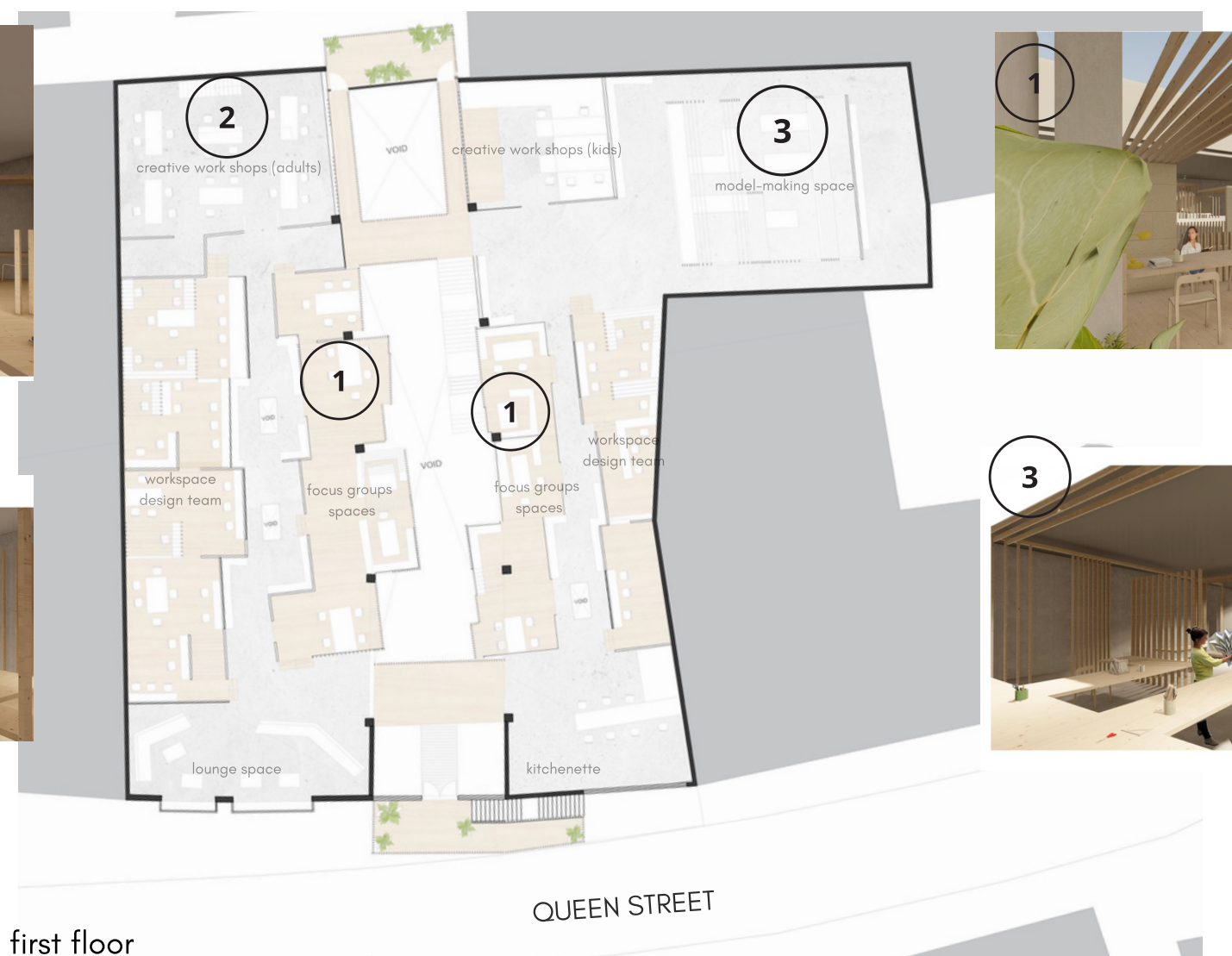


DIVIDING THE SPACE EFFECTIVELY

in-between space



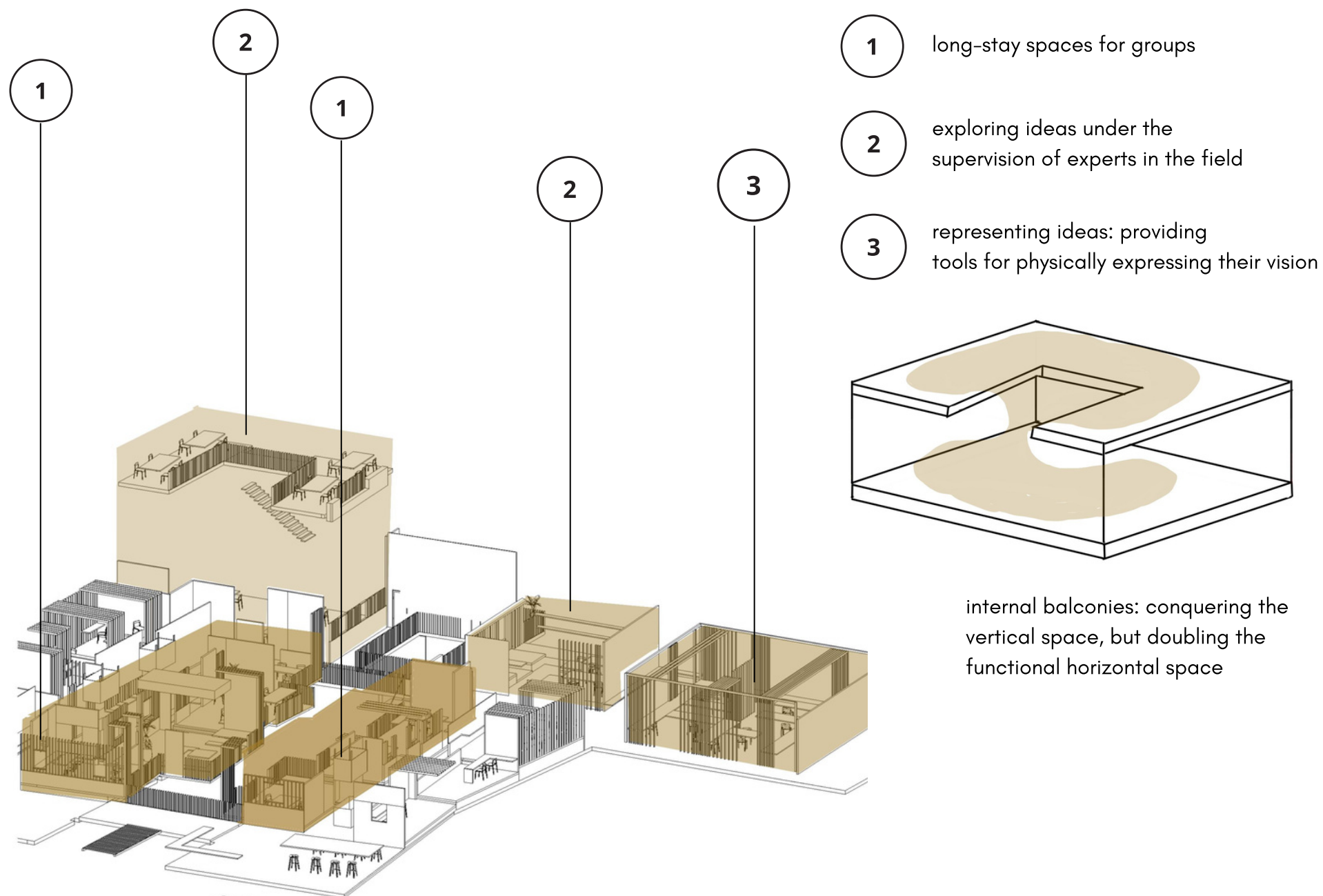
design team workspace



focus group space



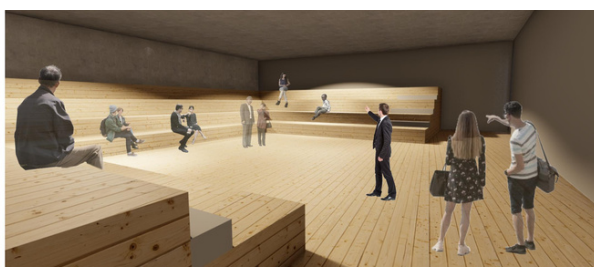
model making space



exhibition space



auditorium



cafe



Leaving space for natural light to come in



2



2



SUSTAINABILITY IN THE USE OF MATERIALS: ETHICALLY SOURCED TIMBER AND LIMESTONE FROM THE LOCAL QUARRIES



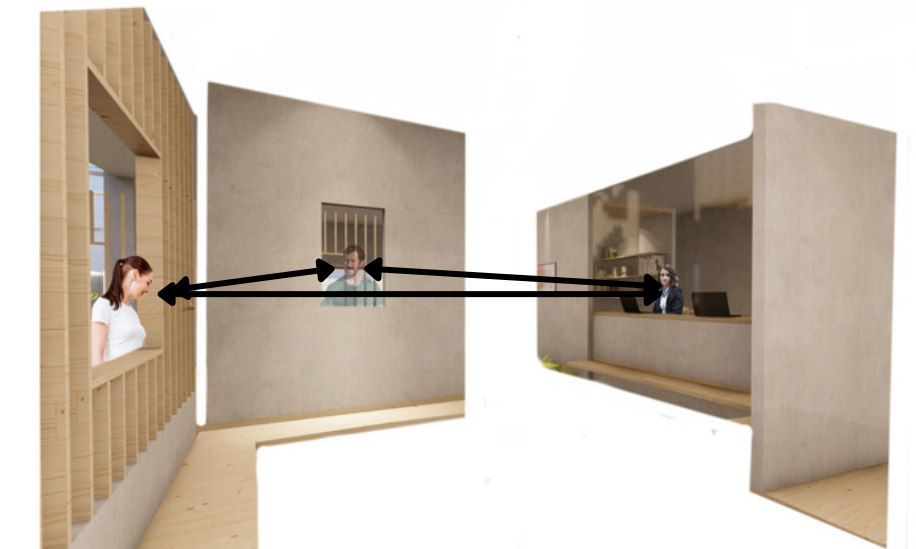
Oxford's urban landscape is formed of buildings clad with limestone
 The limestone walls (shown in the section above) are locally procured from the county's quarries



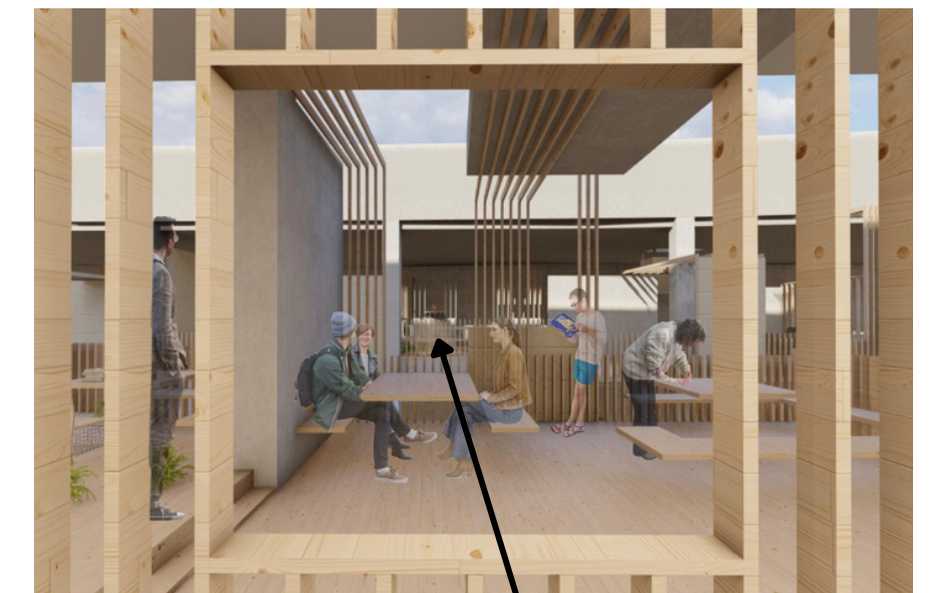
Cutting out views: city urban landscape- interior decoration

Framing Views and dividing the space using timber and limestone

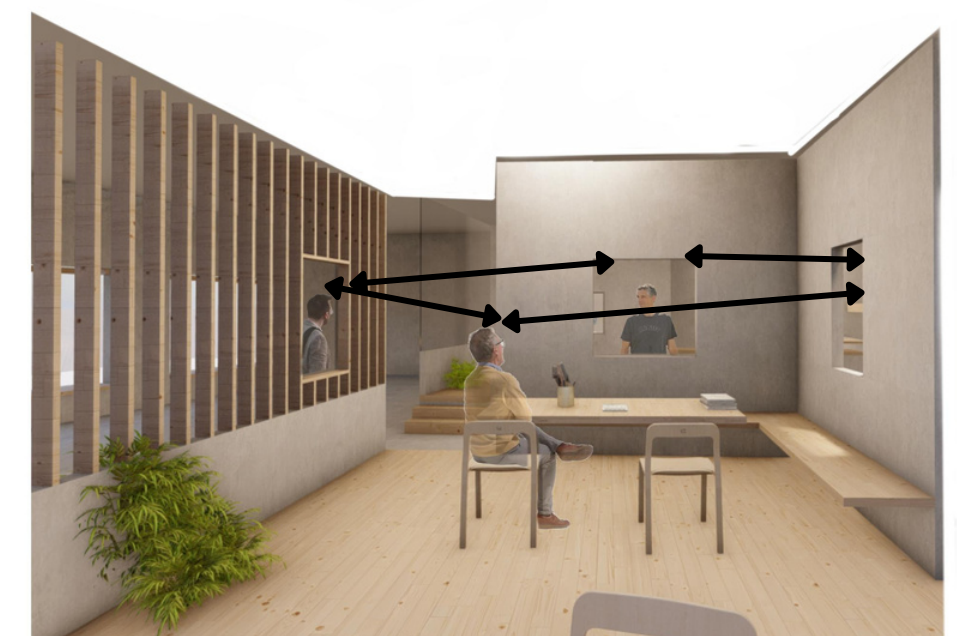
The community centre is meant to catalyse the energies of all the inhabitants and maintain a continuous open discussion so everyone can play an active part in the completion of the design



3 point visual field



conical visual field going reaching multiple spaces on the same line



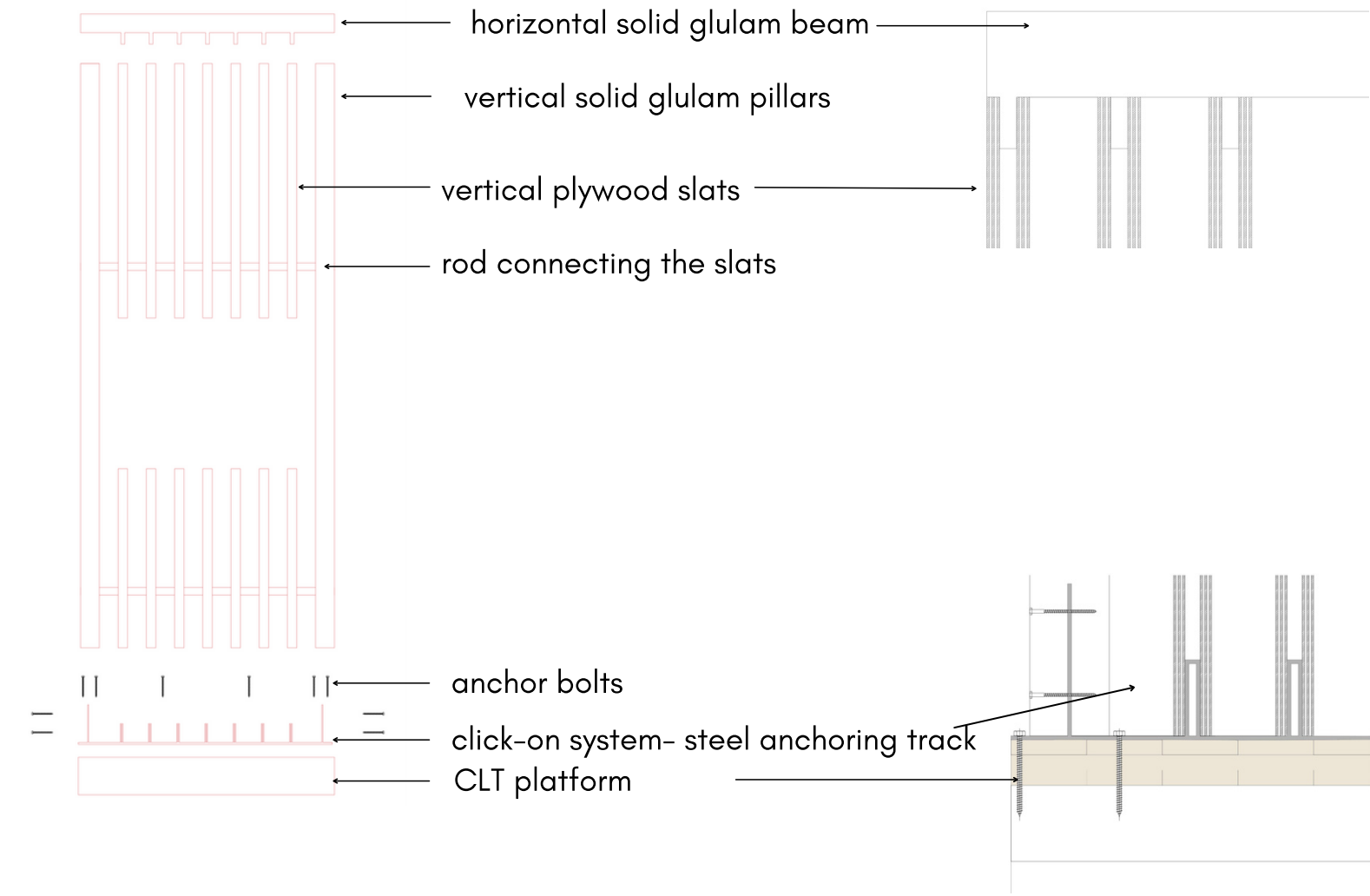
4 point visual field

MODULARITY IN FURNITURE

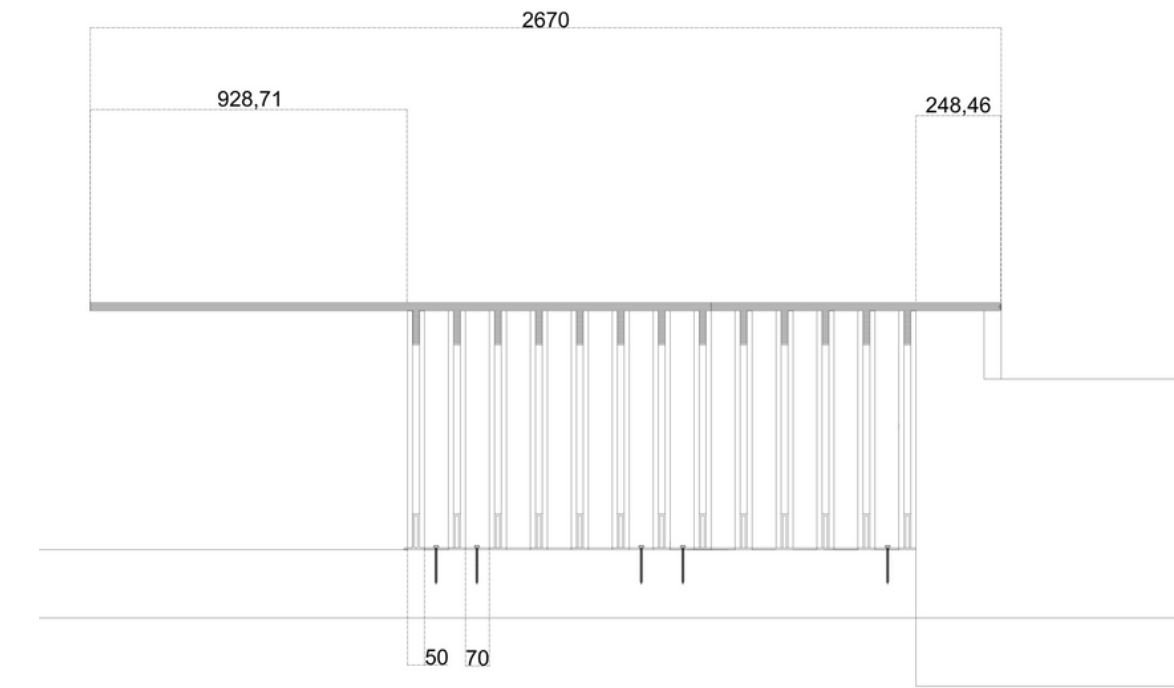
easy to assembly and build, minimizing time and costs

can be changed/replaced over time

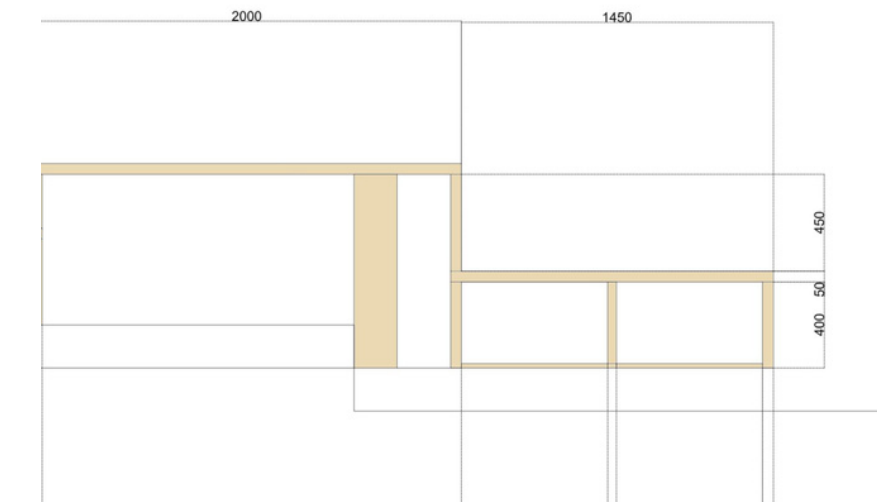
The separation of the spaces is generated mainly by the slight rise in height among the platforms
 Each platform grounds a different space and, based on the level of privacy needed, the division is doubled by timber slats or perforated limestone walls



tables and desks supported by timber slats



Kids's Space
 One- piece table on two levels



concrete riser existing floor timber platform

internal partitions

partitions across the void
 extra privacy: vertical limestone and timber