



DESIGN COLLECTIVE

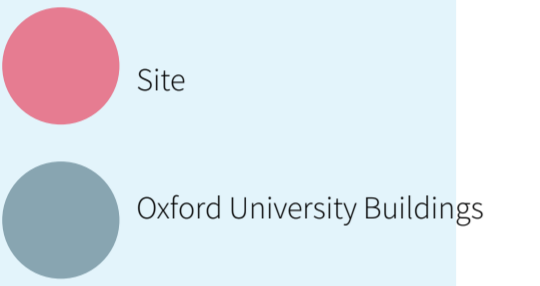
Bridging the gap between community and design

The main focus of Design Collective is to bridge the gap between community and design. Design Collective is a community creative incubator, where the people of Oxford can learn about participatory design. This project is intended to tackle the problem of the community of Oxford being excluded from design within the city. The space will also be a creative hub with affordable studio spaces to rent. There will be a collaborative space for postgraduate students and architects to work alongside each other providing an invaluable environment, both in a literal sense and mentally, for students to extend and expand their practise, learning from professionals.

TOWN VS GOWN

A disconnected community
 Within this project I have aimed to bring the community of Oxford together, bridging the gap between "town and gown". Diluting the stigma around students, by including the local community in the design process of the city itself.

This map shows the relationship between Oxford city centre and Oxford University. The site is surrounded by Oxford university buildings, meaning this area is the perfect epicentre for a community creative incubator, for participatory design and practice.

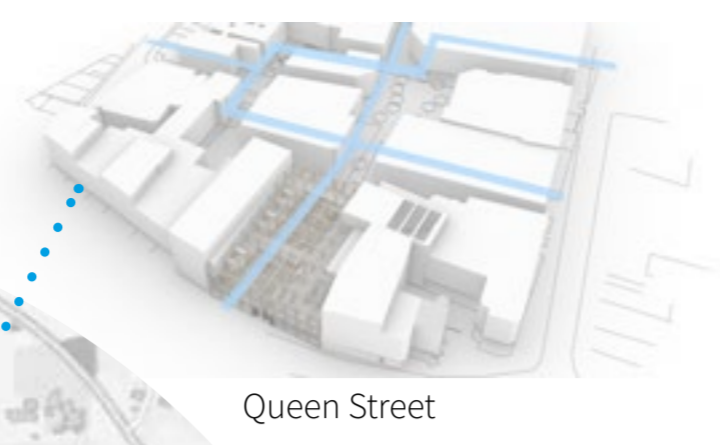
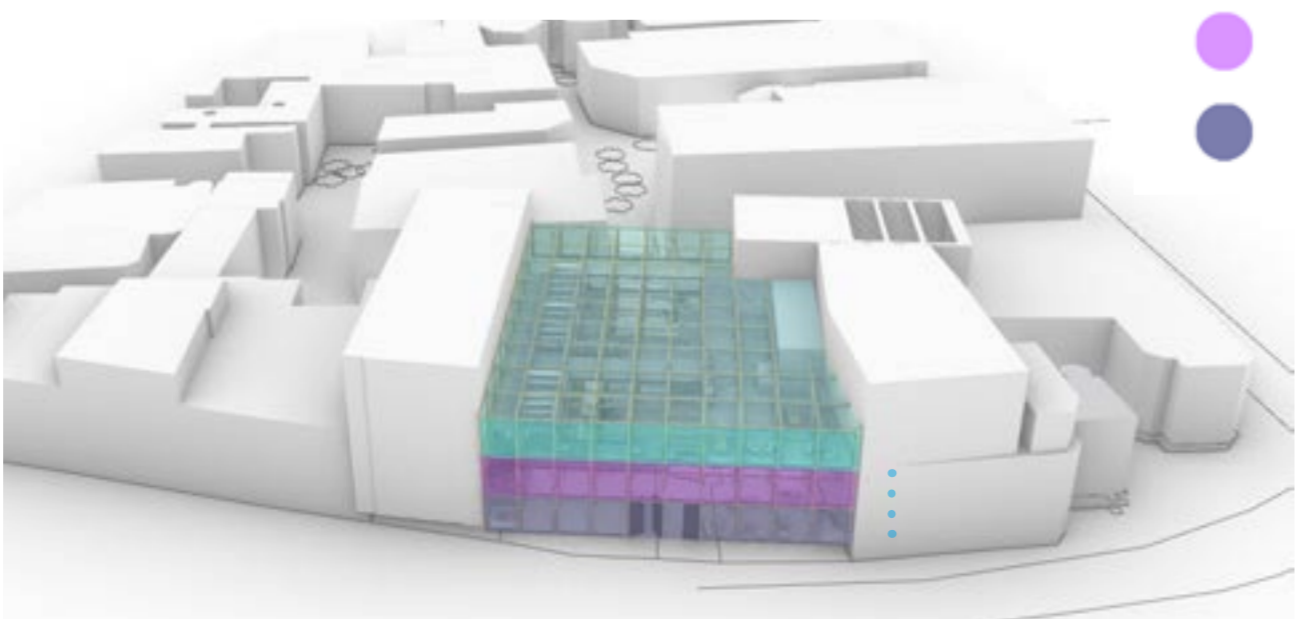
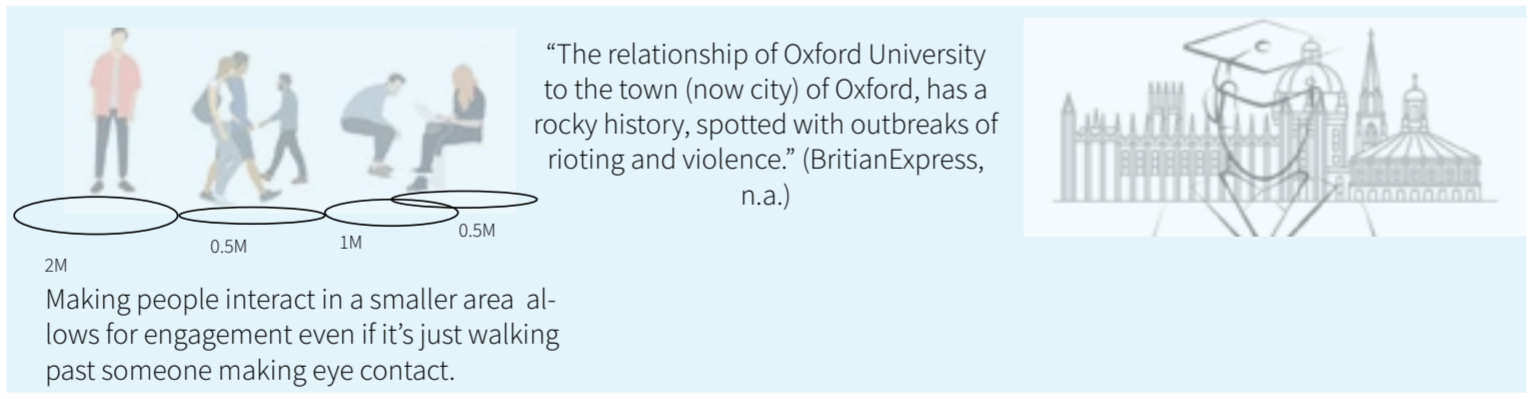
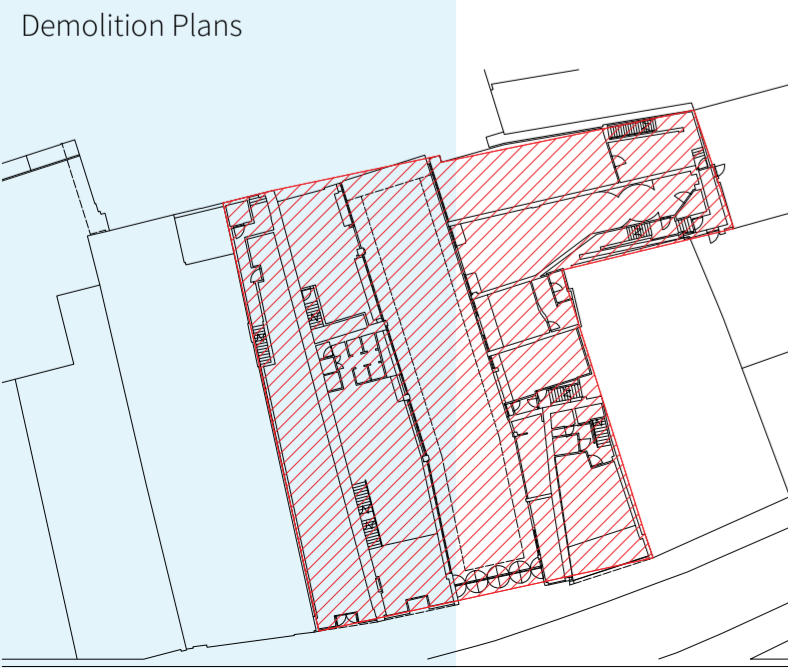


"Town vs Gown"



The Glass-House Community Led Design is a national charity that supports communities, organisations and networks to work collaboratively on the design of buildings, open spaces, homes and neighbourhoods.

They see design not only as a tool for creating great places, but also as a way to connect people and empower them with enhanced confidence, skills and a greater sense of community.



Creative Incubator -definition and social potential

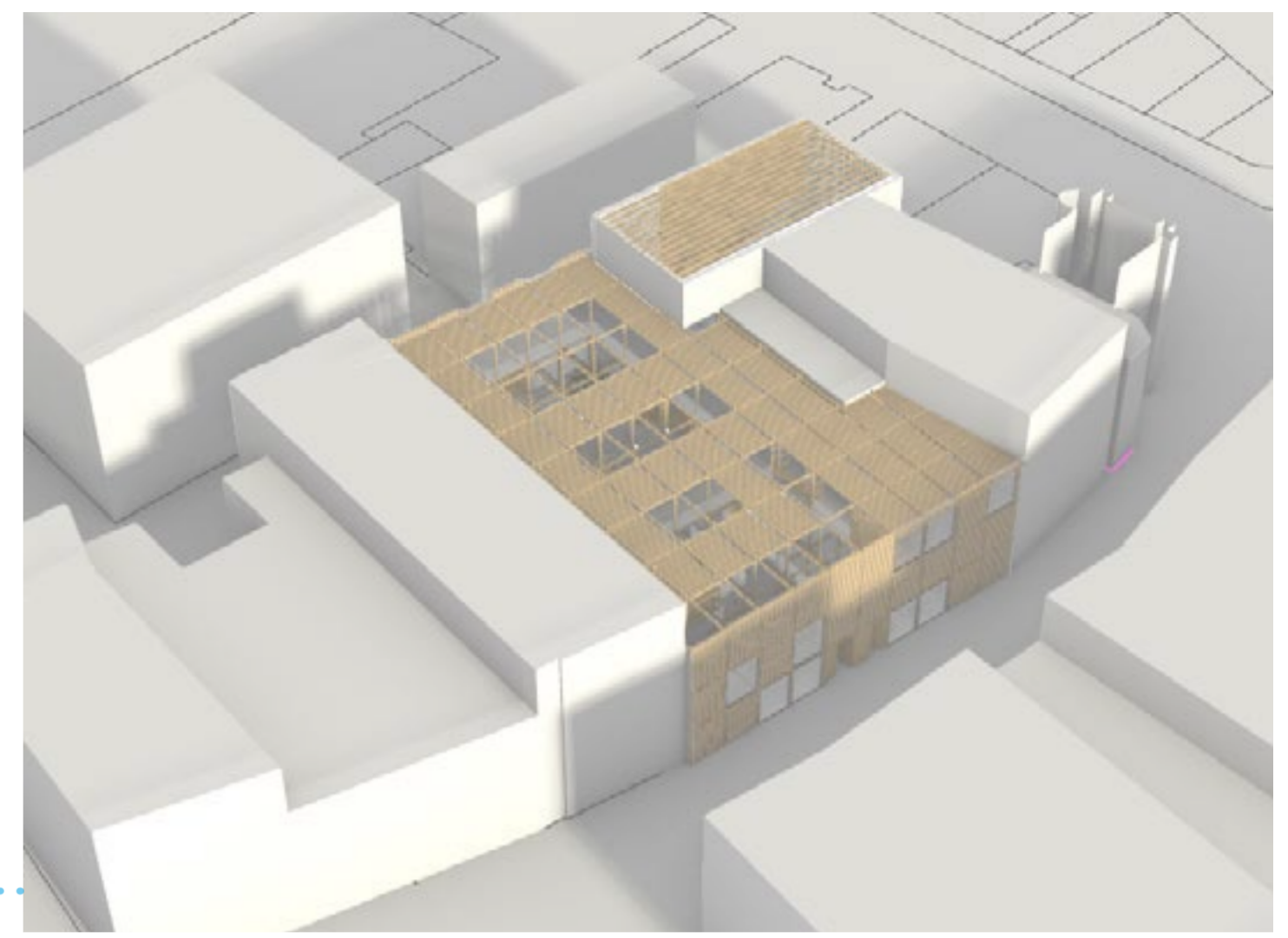
DESIGN COLLECTIVE

Creative Incubator

The term "creative incubator" usually implies specialization, describing a type of organization dedicated to support not just any kind of business, but specifically those affiliated with culture and creative sectors.

Community Incubator

A place where people from a particular neighbourhood can meet for social events, education classes, or recreational activities.



The current Clarendon Centre does not fit with the historical vernacular of the City of Oxford. The Clarendon Centre started as an Inn and a hotel in the residential sector. It then moved over to the commerical sector and turned into Woolworths and then the current Clarendon shopping centre. The new proposal for the Clarendon Centre is to revert back to residential with student accomodation.



GROUND FLOOR



FIRST FLOOR



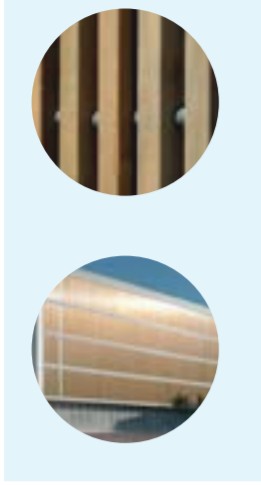
SECOND FLOOR

“When someone begins to do something, there is a clear tendency for others to join in, either to participate themselves or just to experience what others are doing. [...] Once this process unfolds, total activity is greater and more complex than the sum of the original components.” (Jan Gehl (2011) Life Between Buildings – Using Public Space, Island Press). The aim of Design Collective will be to CONNECT individuals within the design industry, with students in the community, through participatory design. The focus is on post graduate students after they have left university, providing them with a space for the next steps. By providing the community with a community incubator, this will in turn provide a connection back with the city of Oxford creating a variety of creative opportunities.

The first floor is a semi public space for post graduates and architects. The space will be a collaborative space for the two to come together, allowing them both to work side by side in a space that they are used to.

The second floor is a space solely for people within the design industry. The space houses studios which can be rented on a 6 month rotation period allowing people to work in an affordable studio space. There is also space for architects and postgraduates to work, along with members of the council involved in participatory design.

-  Framed multi disciplinary Studio spaces
-  Private timber slat rooms
-  Flexible collaborative space
-  Private timber slat rooms
-  Private studio spaces to rent
-  Private timber slat rooms
-  Retractable lecture theatre stairs
-  Casual seating areas
-  Collaborative semi public space - Furniture
-  Collaborative semi public space - Furniture
-  Casual seating area



Brise Soleil

Sun, wind and temperature



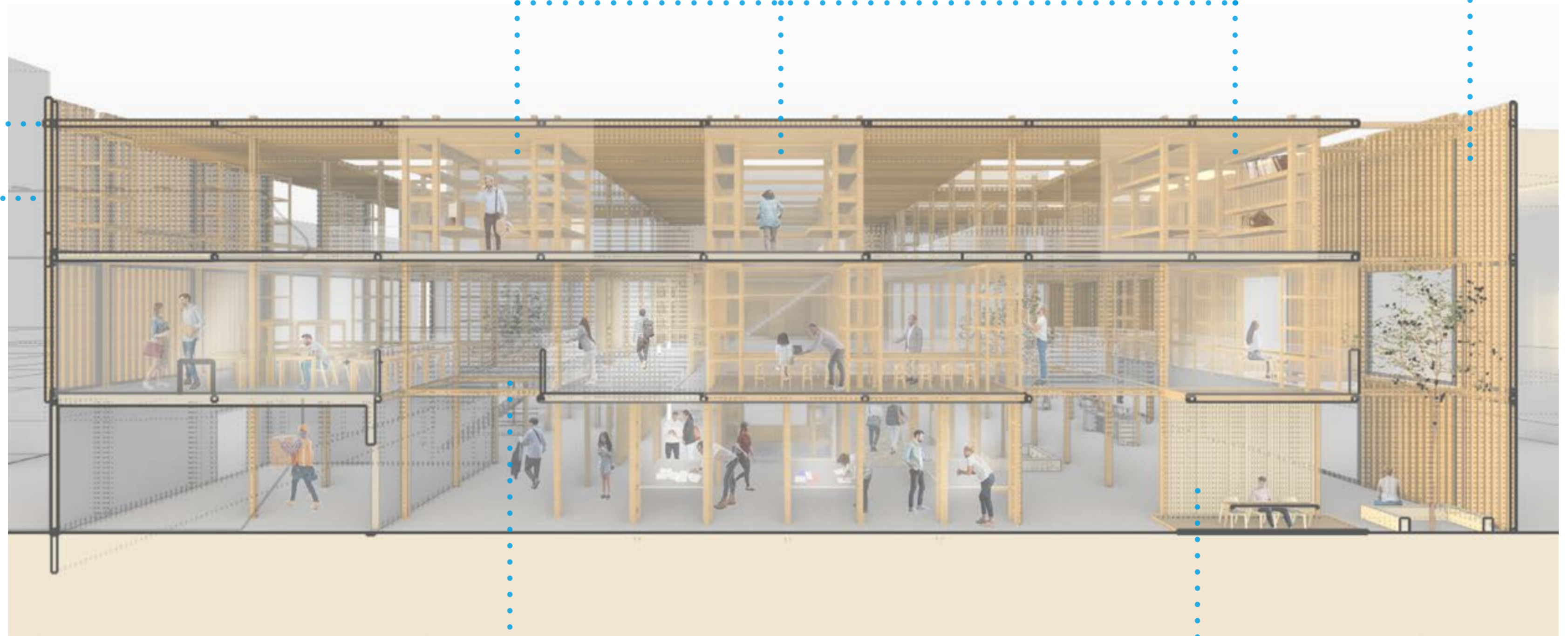
The Brise Soleil on the roof is set in place completely. Brise Soleil at the front of the building and at the back of the building are set in place but can be altered with the seasons. This allows sun to be let in naturally heating the building in the winter. And in the summer months the Brise Soleil provides shade.



A double layer between the Brise Soleil and the outside allows for ventilation, in summer but can be closed in winter to keep heat within the building.

Private studio spaces to rent

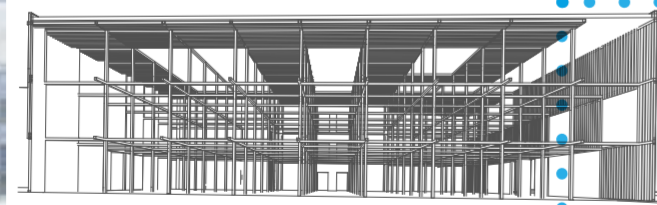
These spaces are completely open with the shelving altering the privacy. They are open to let as much natural light in as possible due to it being a creative space. The Brise Soleil roof allows light in, in a controlled way, meaning lots of diffused natural light.



Structure



House NA / Sou Fujimoto Architects



Materiality



Hybrid Wooden House / Architecture Studio Nolla



Effect

The blurred effect - open with many layers.



Kengo Kuma GC Prostho Museum Research Center, 2010.

Modular Privacy

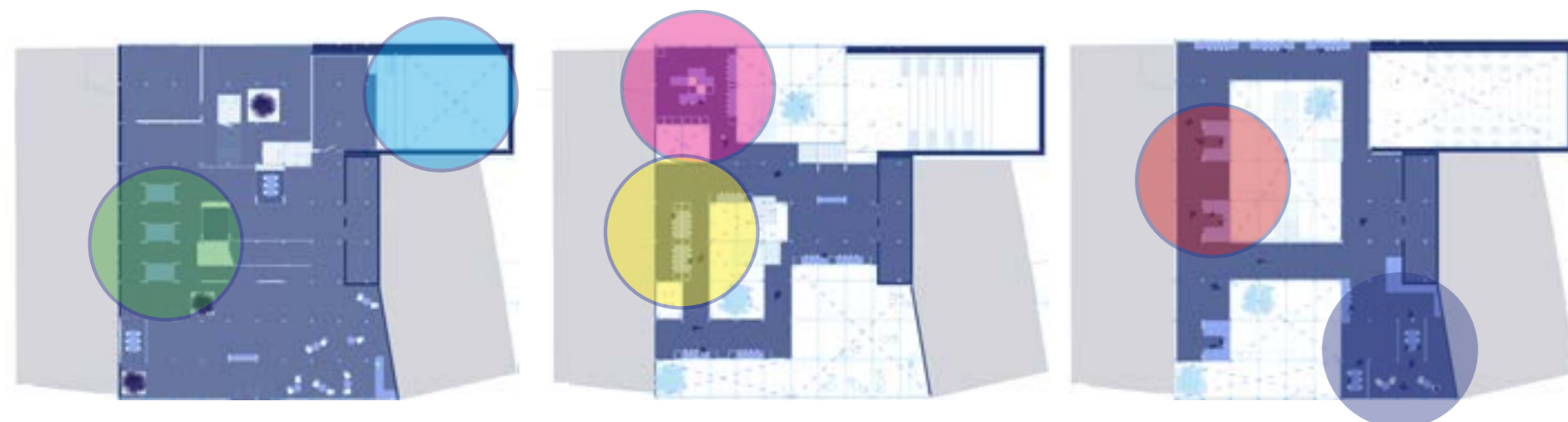
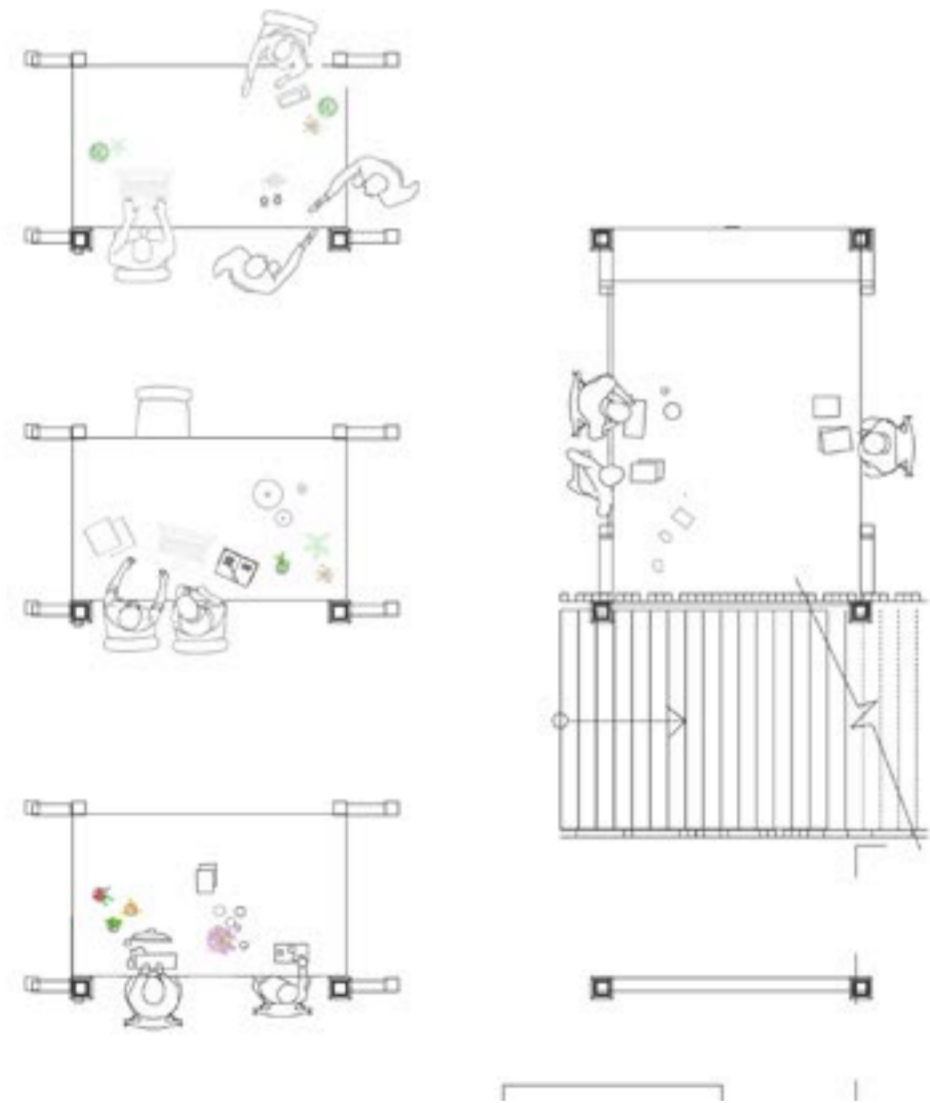
This space is more private with Brise Soleil timber slats to reduce noise and create an intimate atmosphere.

COLLABORATION STRUCTURE

Framed Multi Disciplinary Studio Spaces



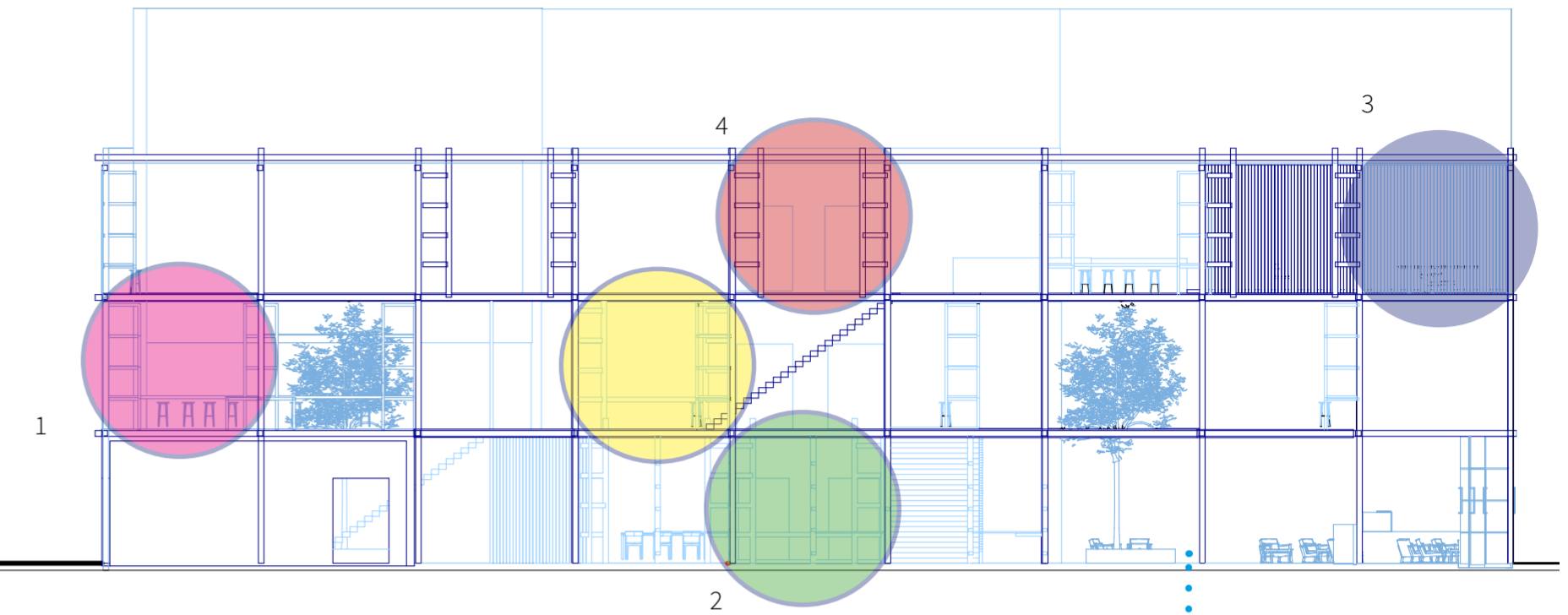
This area is completely public, each frame can be used like an exhibition space, for different participatory design companies to use. This encourages the community to learn and get involved. Creative workshops can happen here as well, with things like public meetings and exhibitions.



FUNCTIONAL PARTITIONING OF SPACE

Modular Furniture

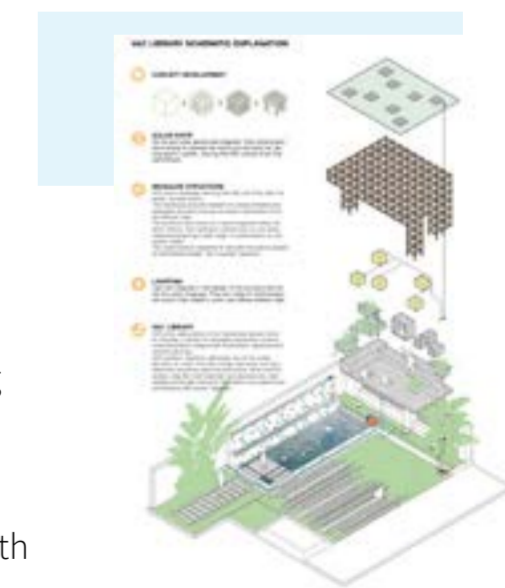
- 1. Flexible collaborative space
- 2. Framed multi disciplinary studio spaces
- 3. Private timber slat rooms
- 4. Collaborative semi public space
- 5. Flexible community stairs
- 6. Private studio spaces to rent



Timber panels attached onto the steel structure

Slots for tables and shelves to be attached to

Shadow joint attaching timber facade to steel structure



The desks are modular and can be moved to create big tables or smaller work surfaces

The framed structure allows for open interaction and communication encouraging people to get involved with activities and learning

The frame also acts as shelving for casual storage throughout the day.