

MACRO GREEN WELLNESS CENTRE

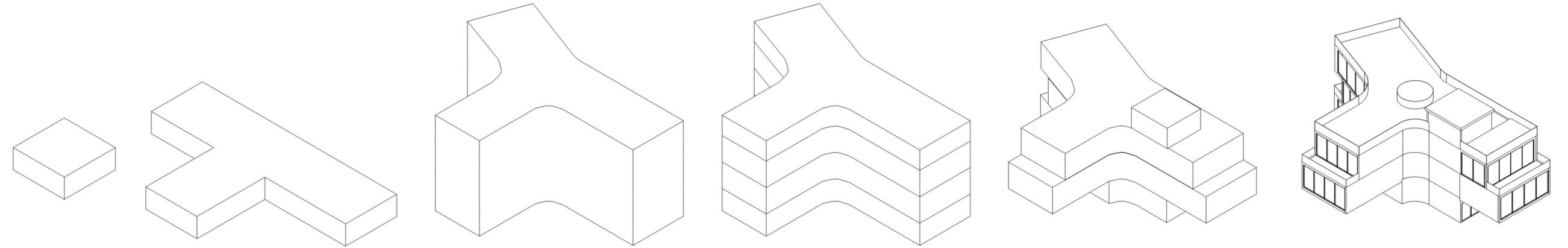


<https://asaheed452.wixsite.com/ammara>

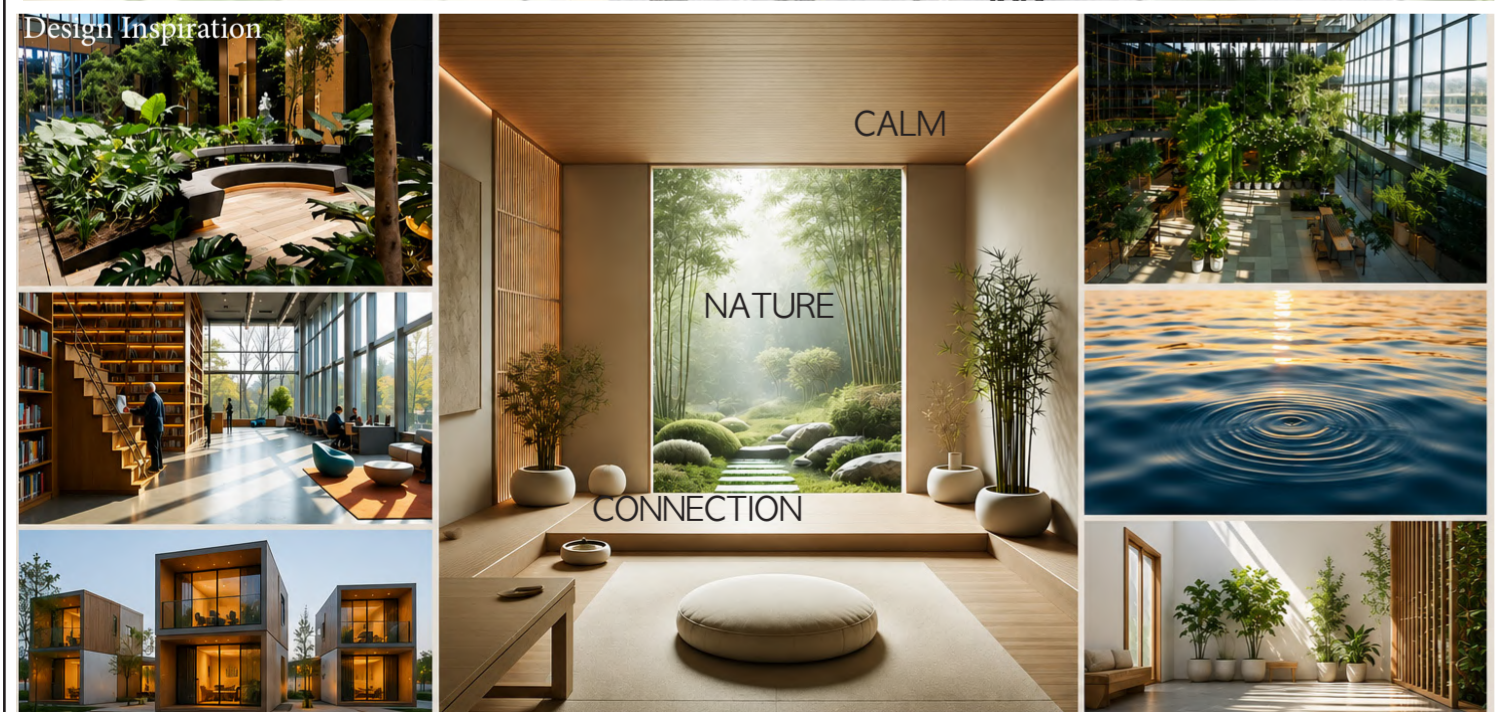
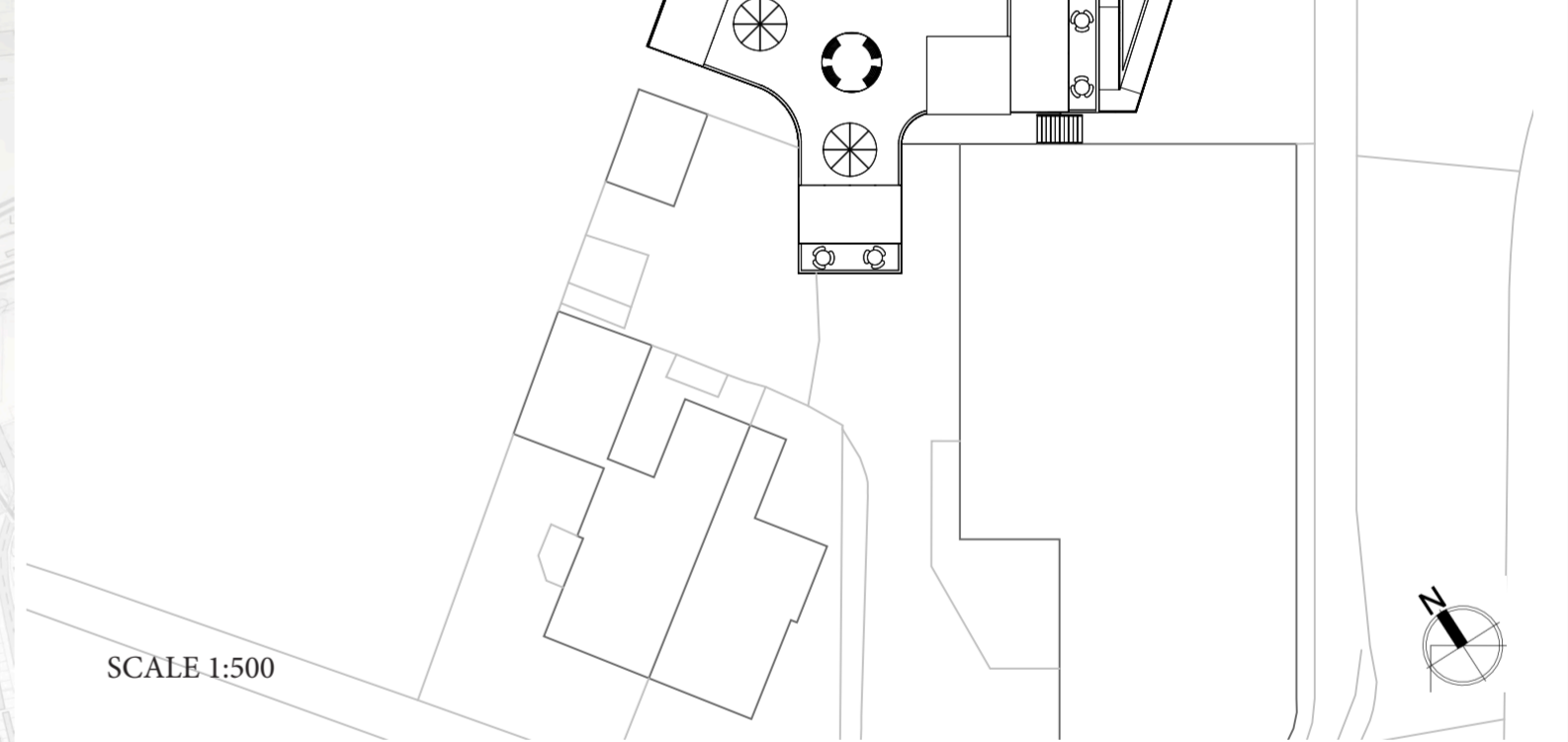


Macro Green Wellness Centre integrates a unified material and environmental strategy to deliver a sustainable, well-being-focused architectural response within a constrained urban site. The elevated structure enhances daylight, natural ventilation, and microclimate performance while reducing ground-level impact. A green roof improves thermal regulation, biodiversity and visual softness, and photovoltaic panels support low-carbon energy generation. The material palette prioritises natural, low-VOC finishes, warm timber, and tactile surfaces that strengthen sensory comfort and durability. Together, these decisions demonstrate strong material and environmental resolution through passive design, ecological enhancement, and carefully considered material expression that supports a restorative user experience.

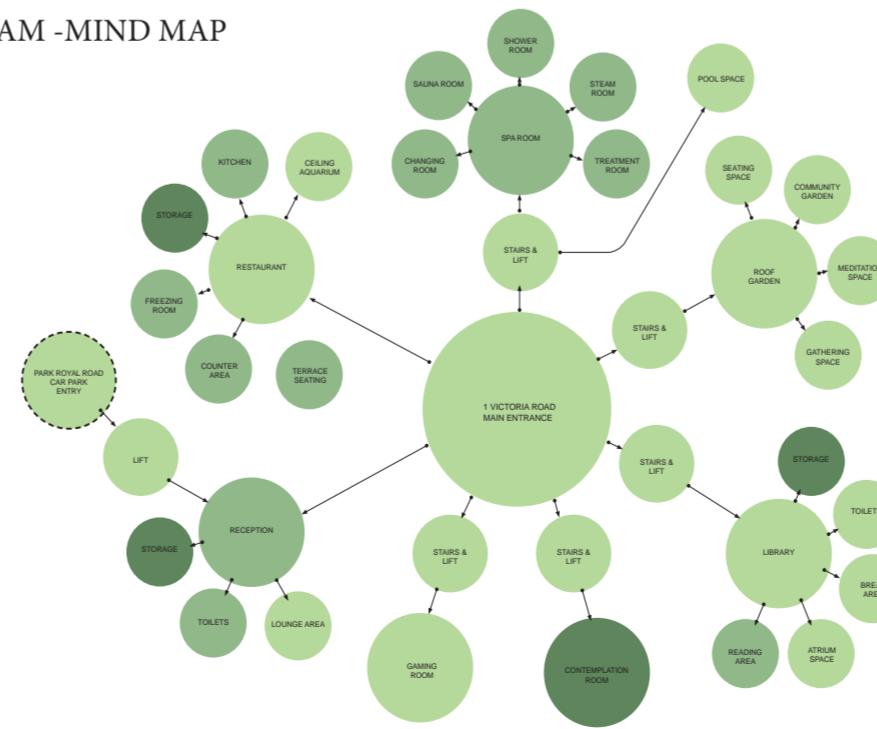
CONCEPT DEVELOPMENT



CONCEPT AND SITE STRATEGY



SPATIAL DIAGRAM - MIND MAP



MOOD BOARD



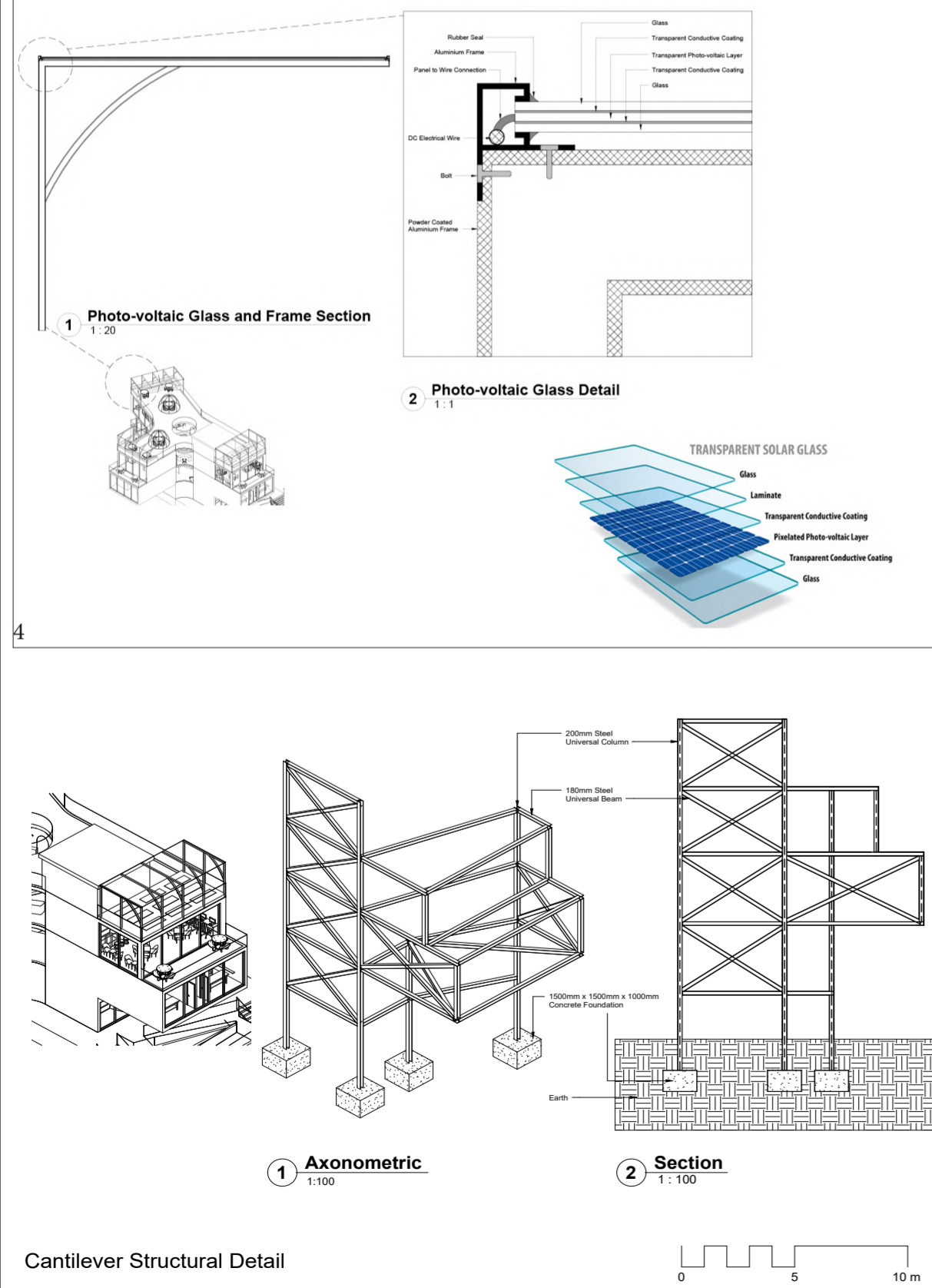
MATERIAL AND ENVIRONMENTAL STRATEGY

MATERIAL BOARD



PER SPACE	Floor	Walls	Ceiling
Restaurant	Waterproof cork	Lime/microcement plaster	Acoustic panels + pendant lights
Spa	Travertine (R11)	Timber slats + microcement	Acoustic panels + timber
Library	Acoustic carpet	Forest green plaster + white plaster	Acoustic panels + baffles
Rooftop	Cork + timber decking	—	Open sky + ETFE domes

SECTION OF BUILDING SYSTEMS AND ENGINEERING ASPECTS



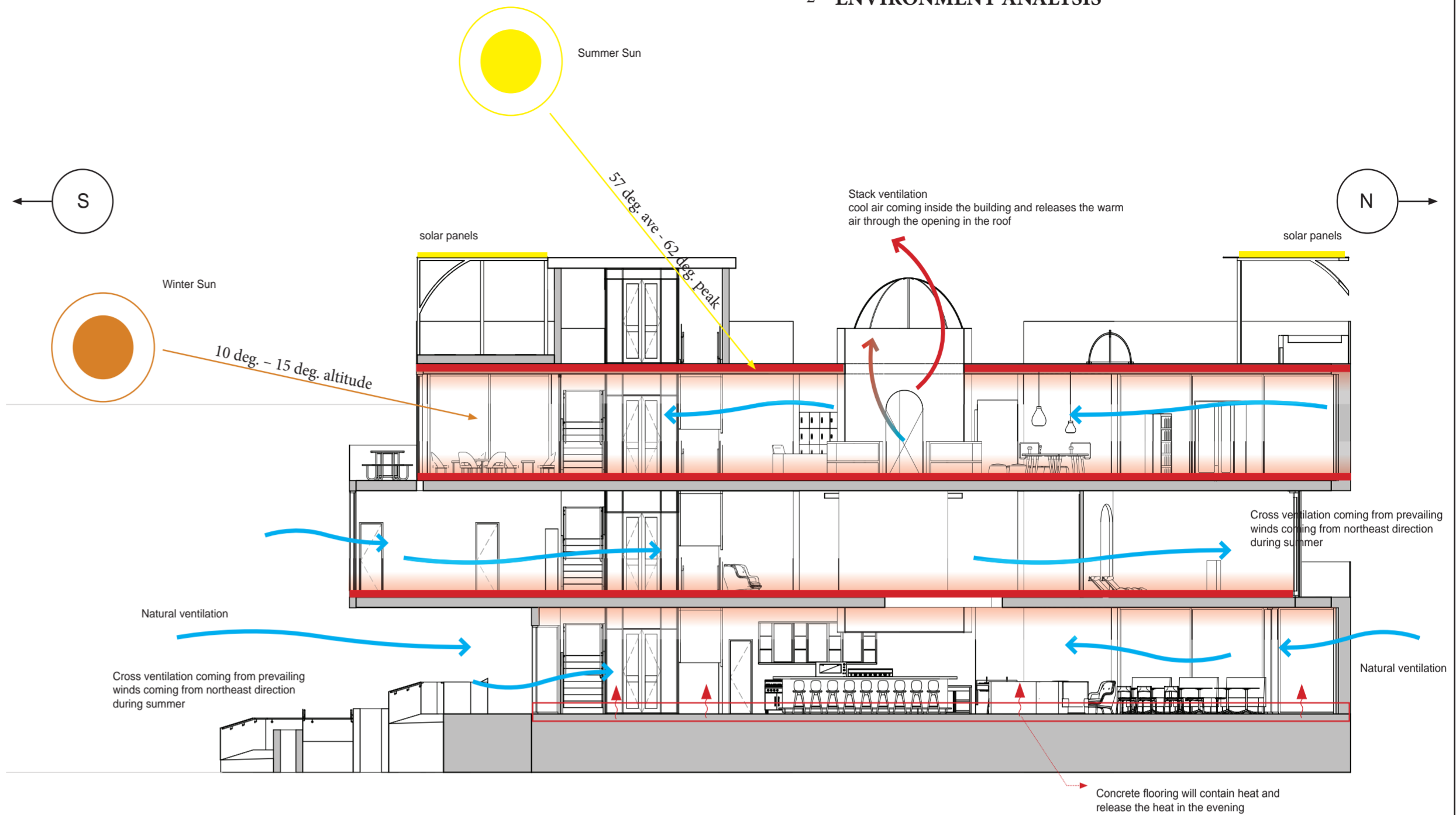
2 ENVIRONMENT ANALYSIS

1. Material Strategy:

It is in terms of the material palette that the project reinforces the healing and biophilic idea. Cork flooring offers acoustic softness, warmth and sustainability. While some elements are used for the visual effect of timber tones, creating a sense of variation and natural scale, others are used to provide a sense of tactile balance and durability through stone and fabric. Materials are chosen specifically for being low VOC and for their sensory attributes, both of which are directly related to the Material & Environmental Resolution category.

2. Environmental Strategy:

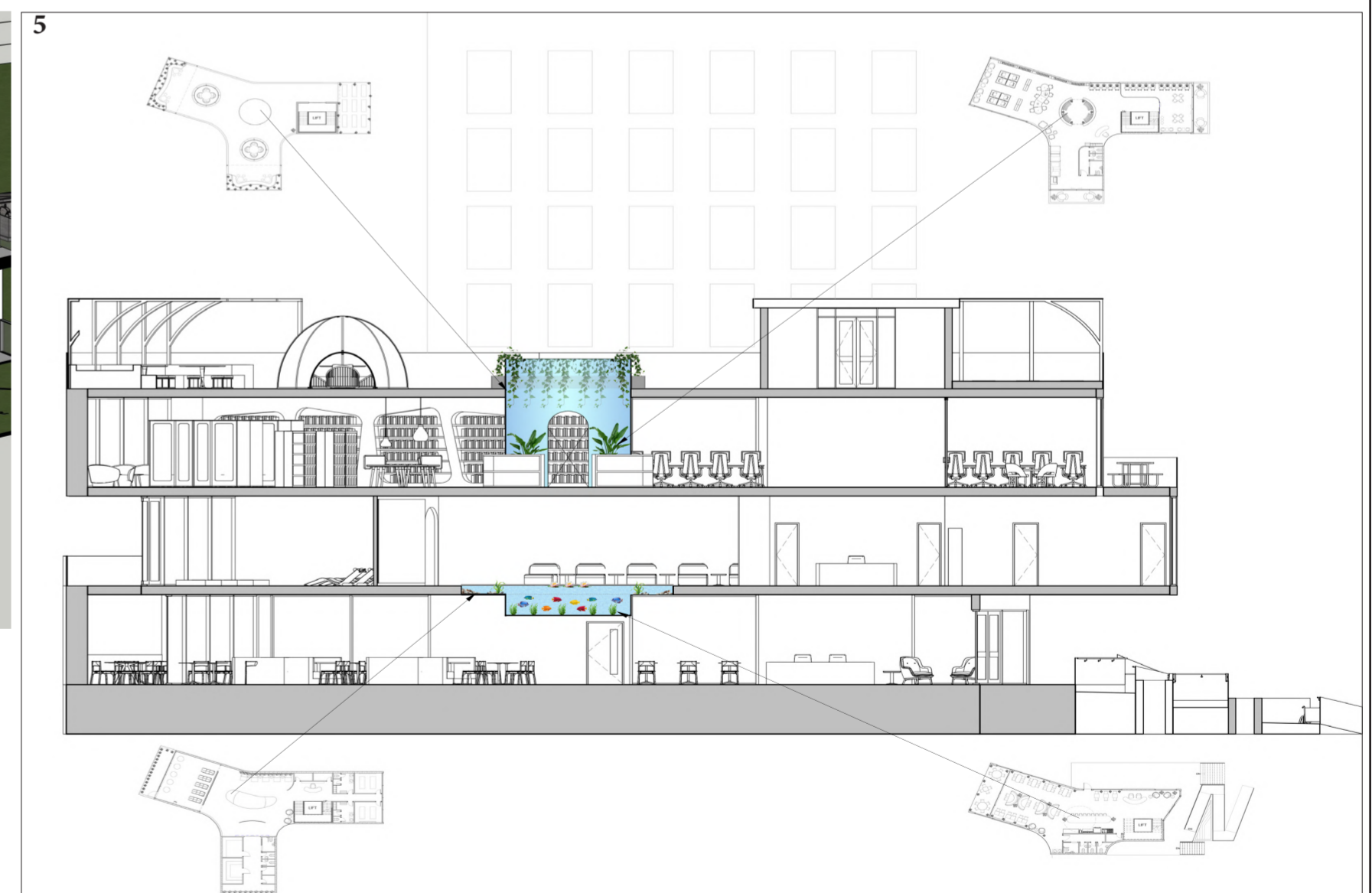
Performance driven by passive environmental systems: stack ventilation, controlled daylighting, and seasonal sun path response. The green roof contributes to the stability of the climate, biodiversity and visual tranquility. PV glazing creates renewable energy whilst retaining transparency. These strategies lead to lower impacts and improve wellbeing, as they are orientated to climate responsiveness and environmental coherence in relation to the category they belong to.



A dual public circulation system connects the building from both the car park side and the main entrance, improving accessibility, flow, and user distribution across the site.

4. SUSTAINABLE BUILDING DESIGN STRATEGY

Photovoltaic glazing generates on-site renewable energy while functioning as a daylight-modulating façade material, strengthening both environmental performance and material resolution. The solar reflective, low-emissivity envelope and the steel structural system, which is lightweight and minimises material usage and embodied carbon, supporting the project's environmental strategy by creating long, open spans that do not require heavy support. The high-level framework supports the structure from the ground, which aids in improving ventilation in the area and reducing the site's overall visual impact. The ventilation of the area, decreasing the site's impression. Its transparency and usability enable interior spaces to be flexible and adaptable for future reuse and disassembly. The material and environmental considerations exhibited through this structural approach closely fulfil the requirements of the Material & Environmental Resolution category.



The aquarium and pool are linked vertically together at ceiling level, which creates a new vertical water system that brings movement, reflection and acoustic softness to the interior and is a calming and wellbeing-creating sensory material. In addition, the atrium (only on the second-floor library) allows daylight to enter the space and allows air to flow in and out of the stacks naturally. The opening visually connects the library with the planting area of the green roof, which promotes biodiversity and filters the light. The water, light, air and plant elements join in harmony to provide a therapeutic environmental link throughout the building, directly addressing the Material & Environmental Resolution category.

TECHNICAL DRAWINGS

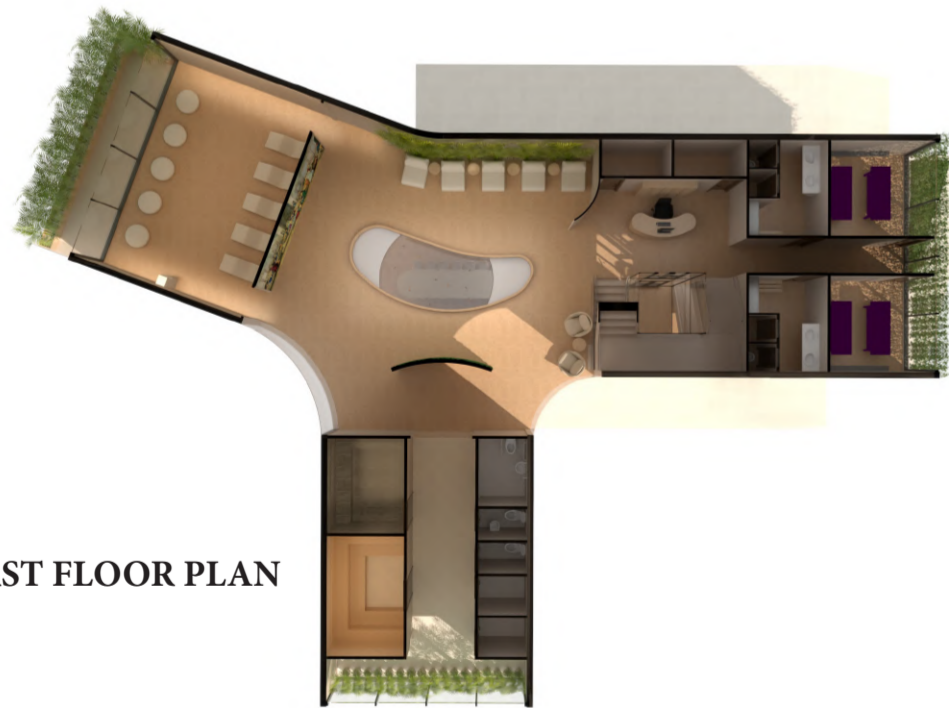
ROOF PLAN



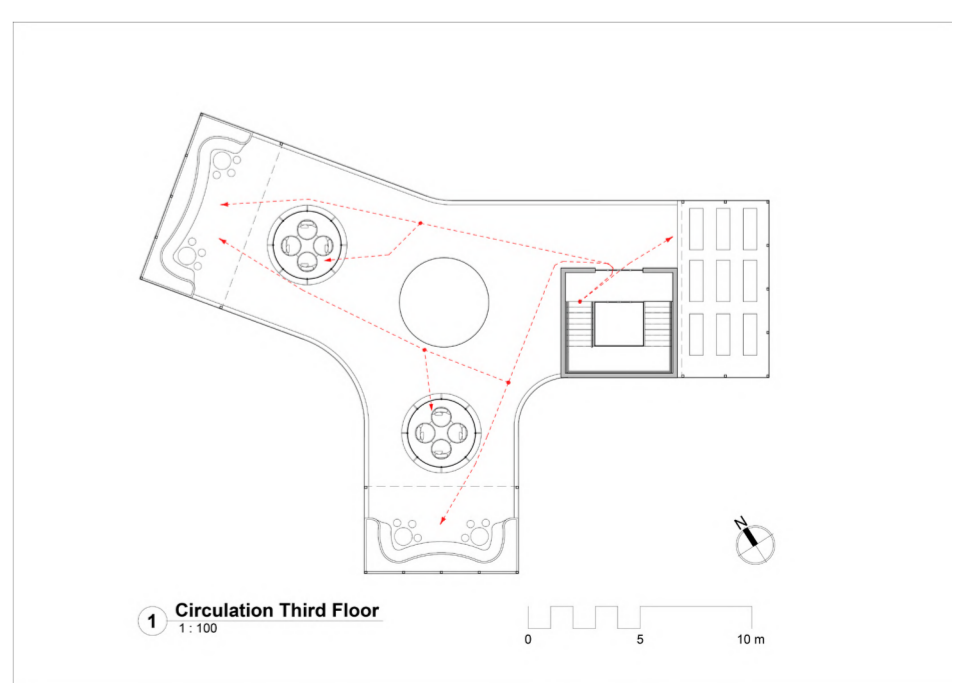
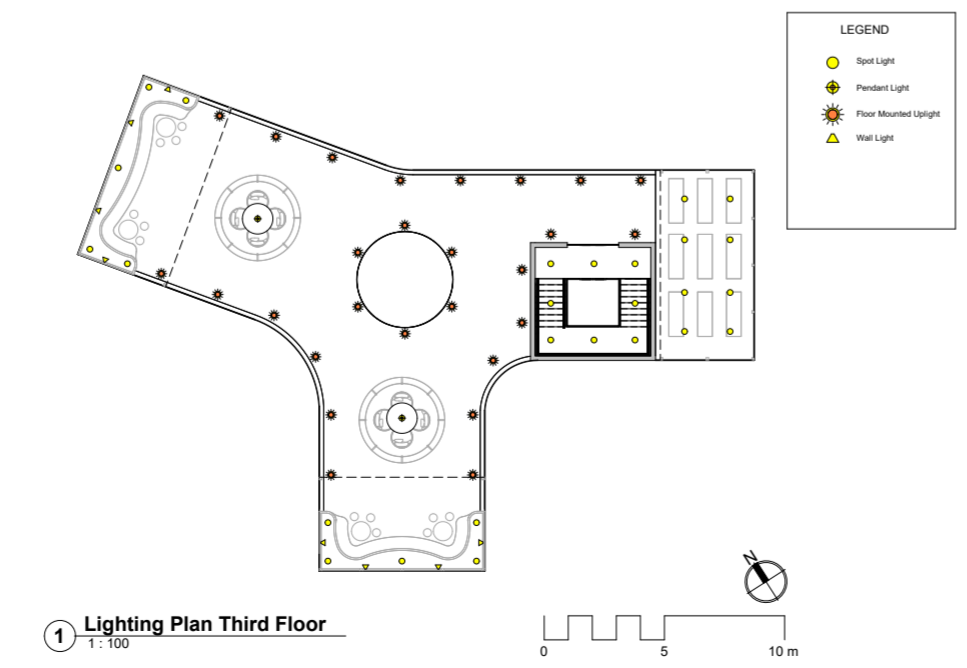
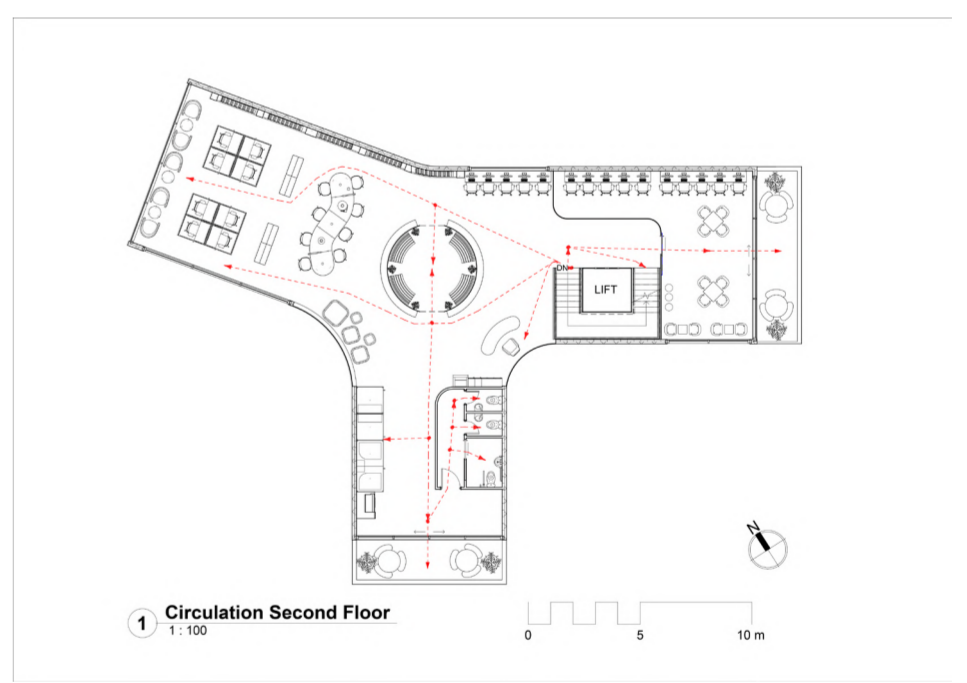
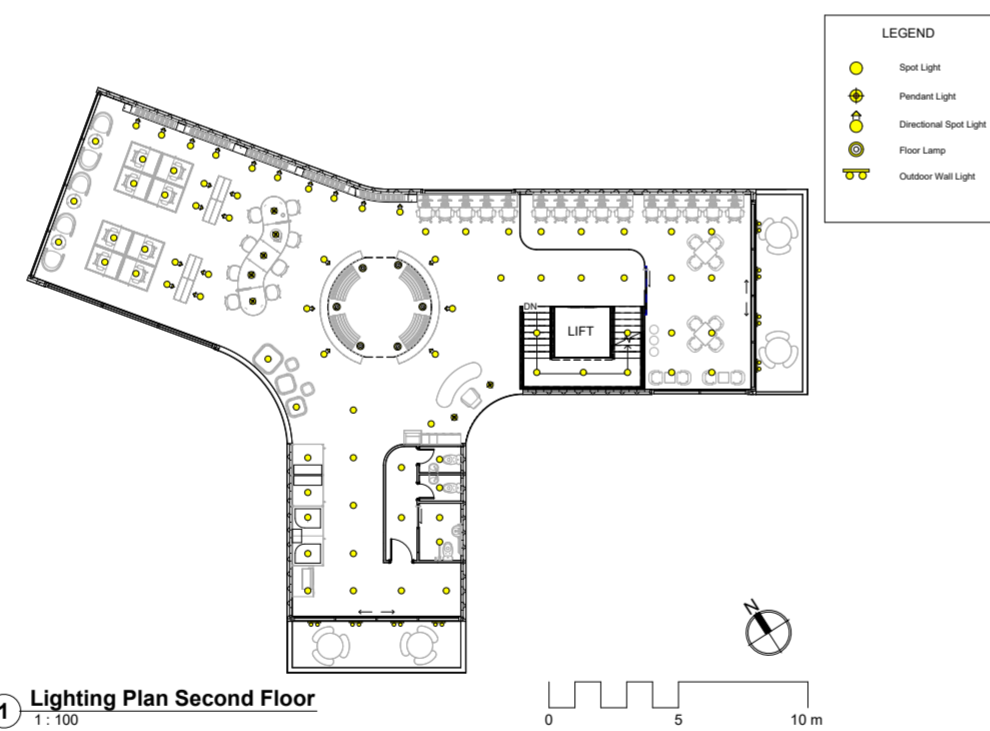
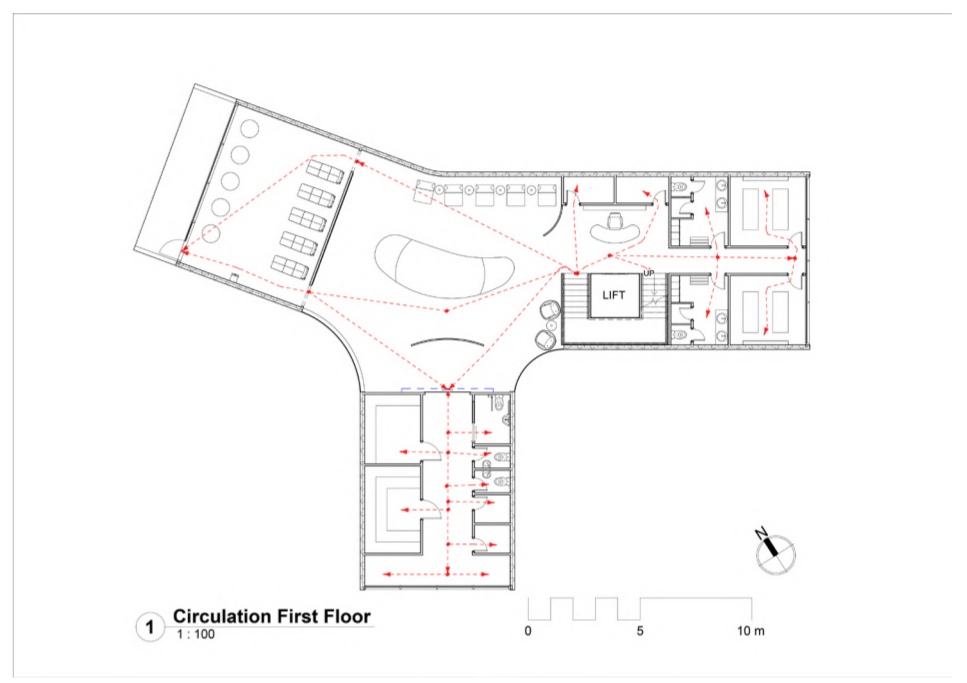
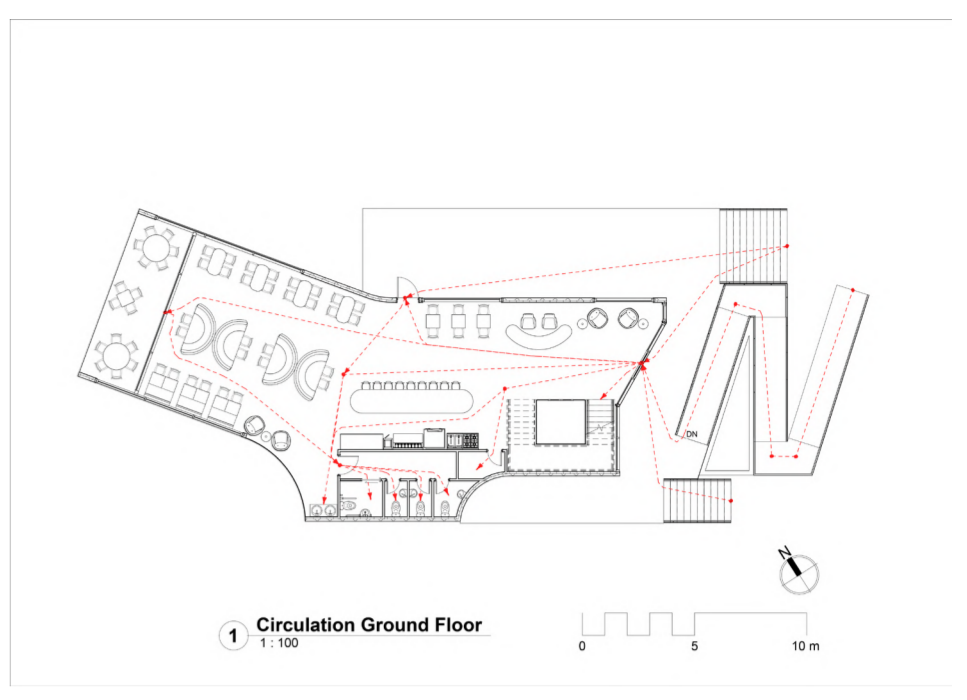
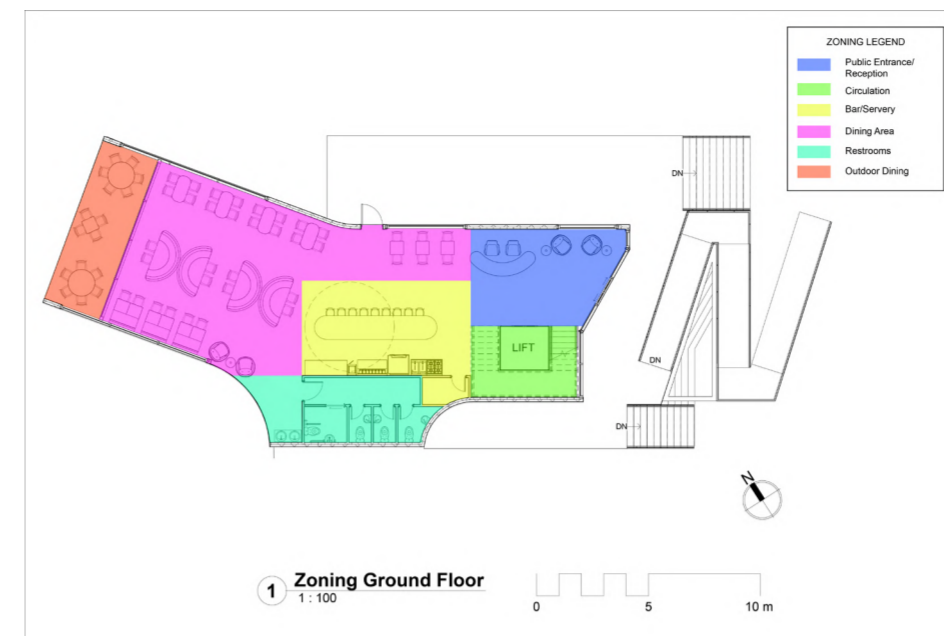
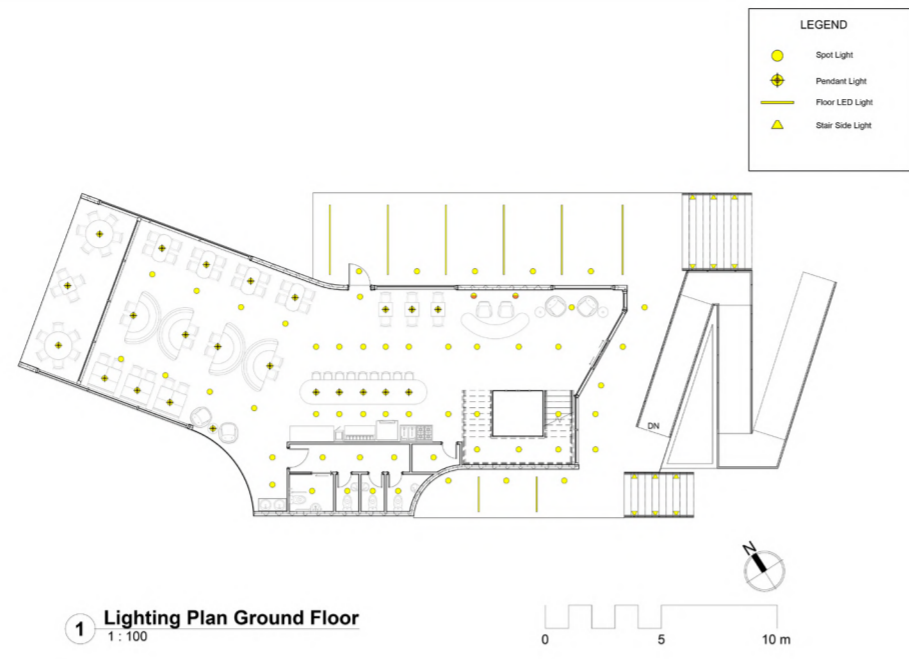
SECOND FLOOR PLAN

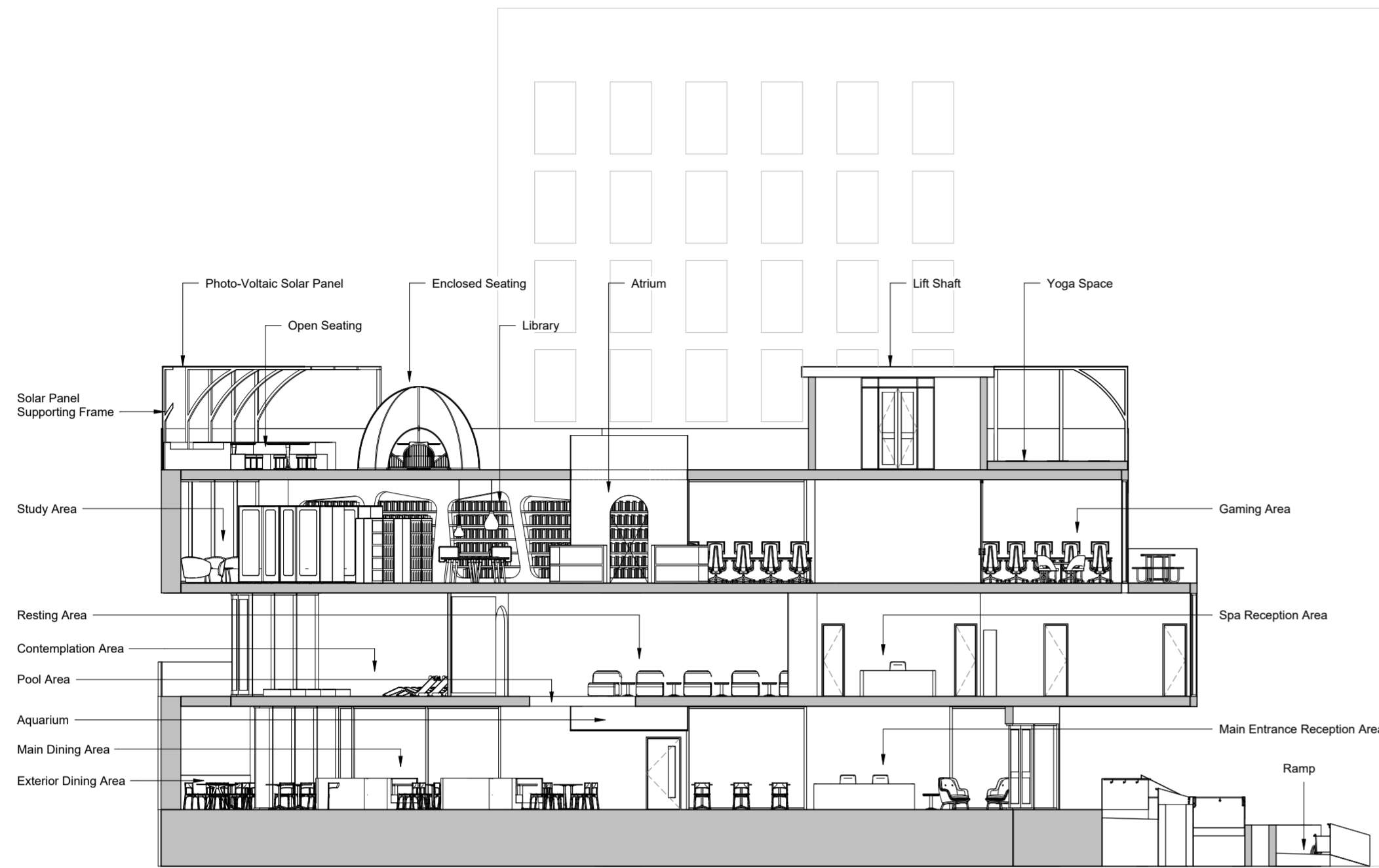


FIRST FLOOR PLAN

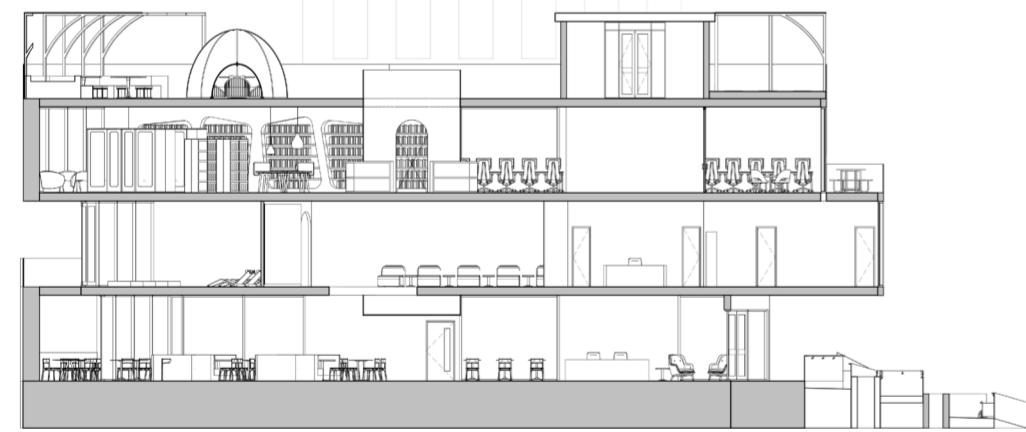


GROUND FLOOR PLAN



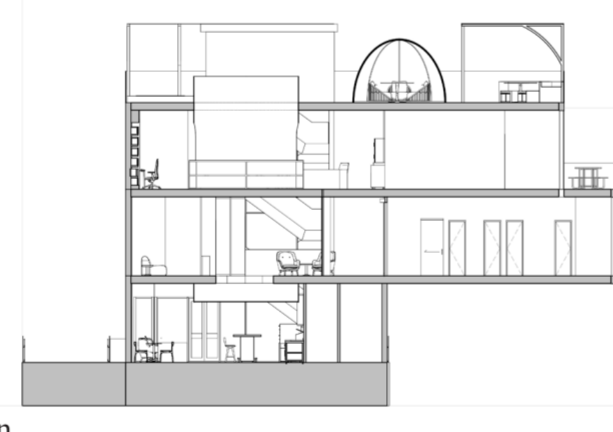


1 Fully Annotated Section



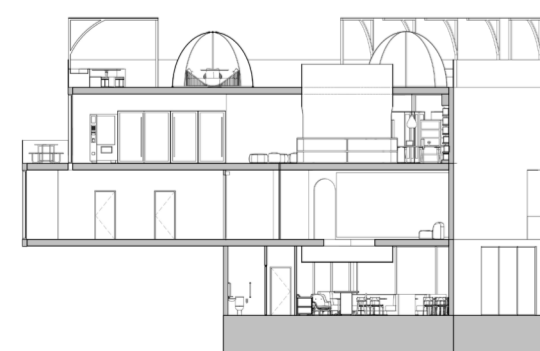
South Elevation

1 Section 1
1:100



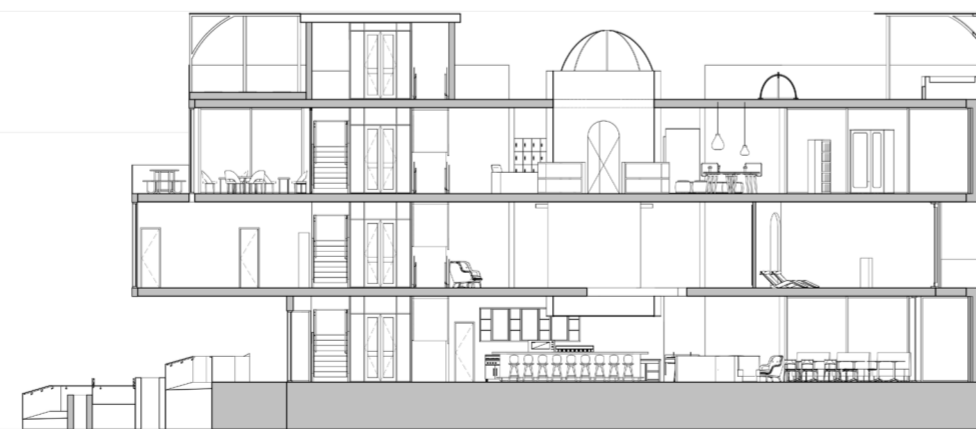
West Elevation

1 Section 3
1:100



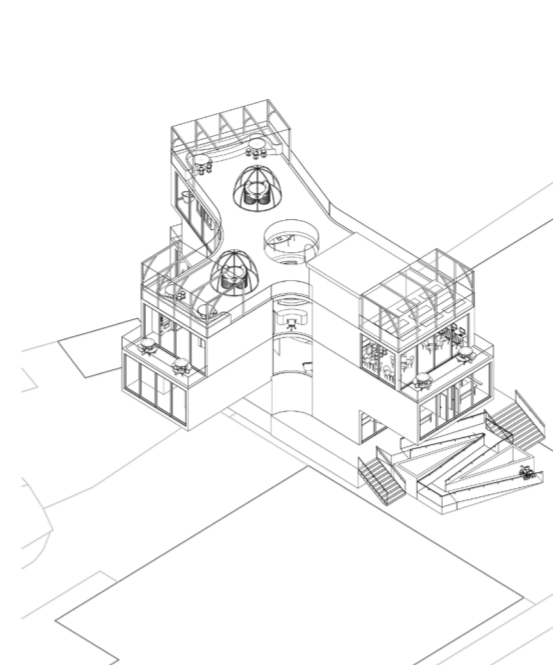
East Elevation

1 Section 4
1:100

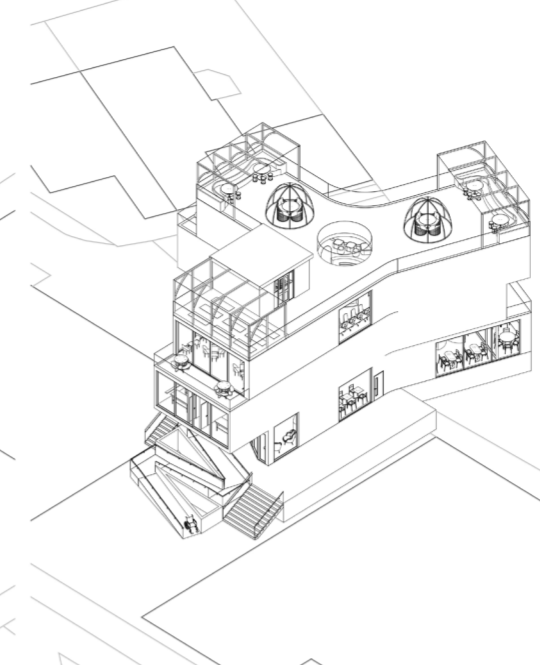


North Elevation

1 Section 2
1:100



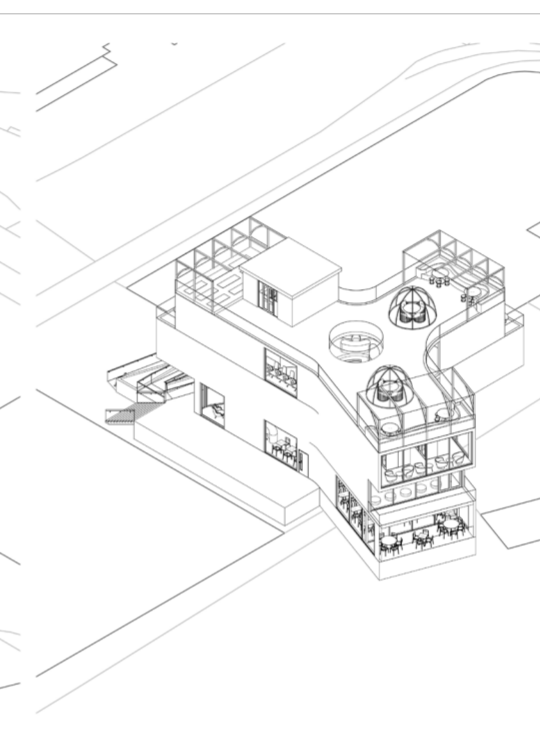
1 Axonometric SouthEast



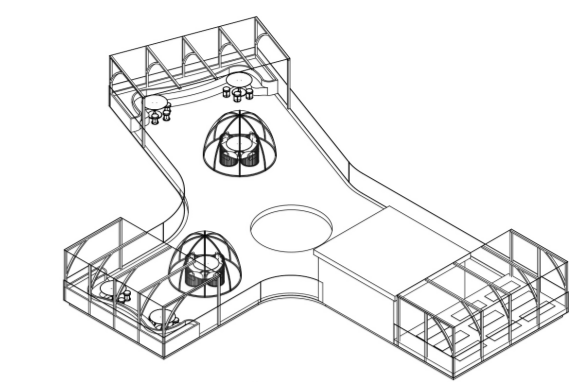
2 Axonometric NorthEast



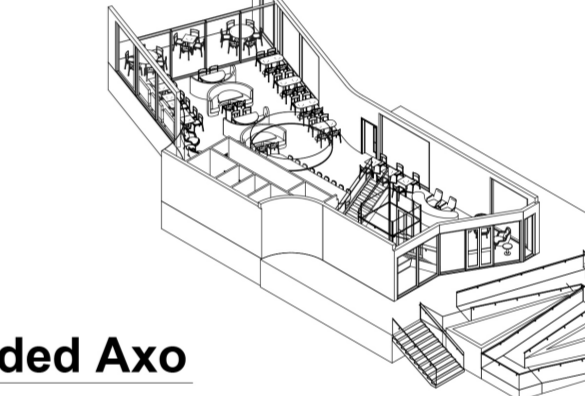
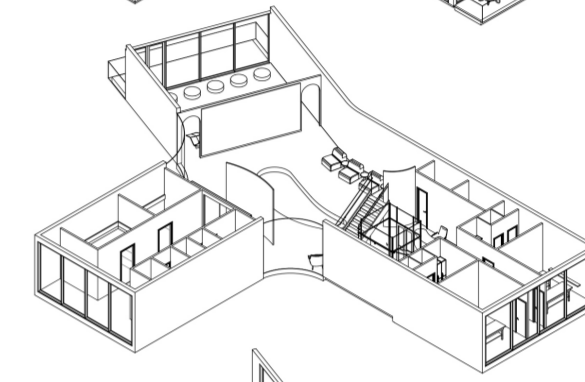
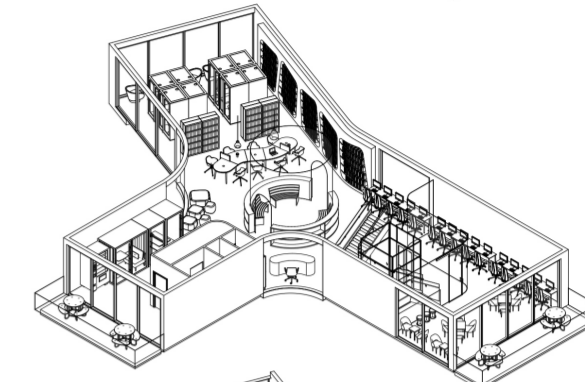
1 Axonometric SouthWest



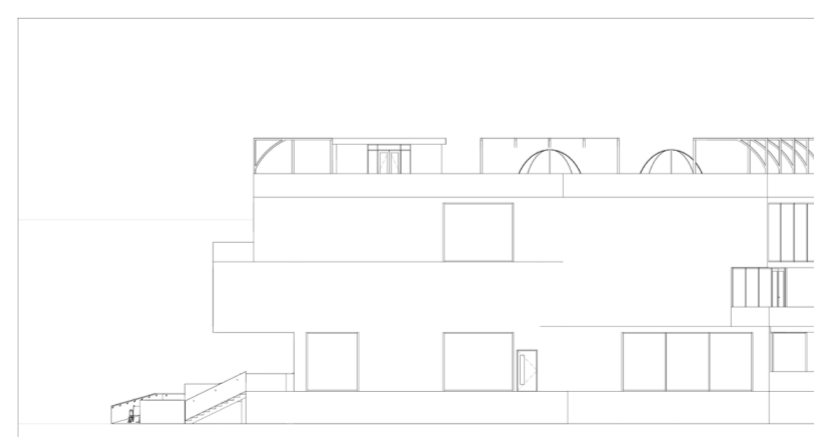
2 Axonometric NorthWest



1 Exploded Axo



1 East Elevation
1:100



1 North Elevation
1:100



1 West Elevation
1:100



1 South Elevation
1:100

CGI RENDERS



GROUND FLOOR

FIRST FLOOR

SECOND FLOOR

ROOF