

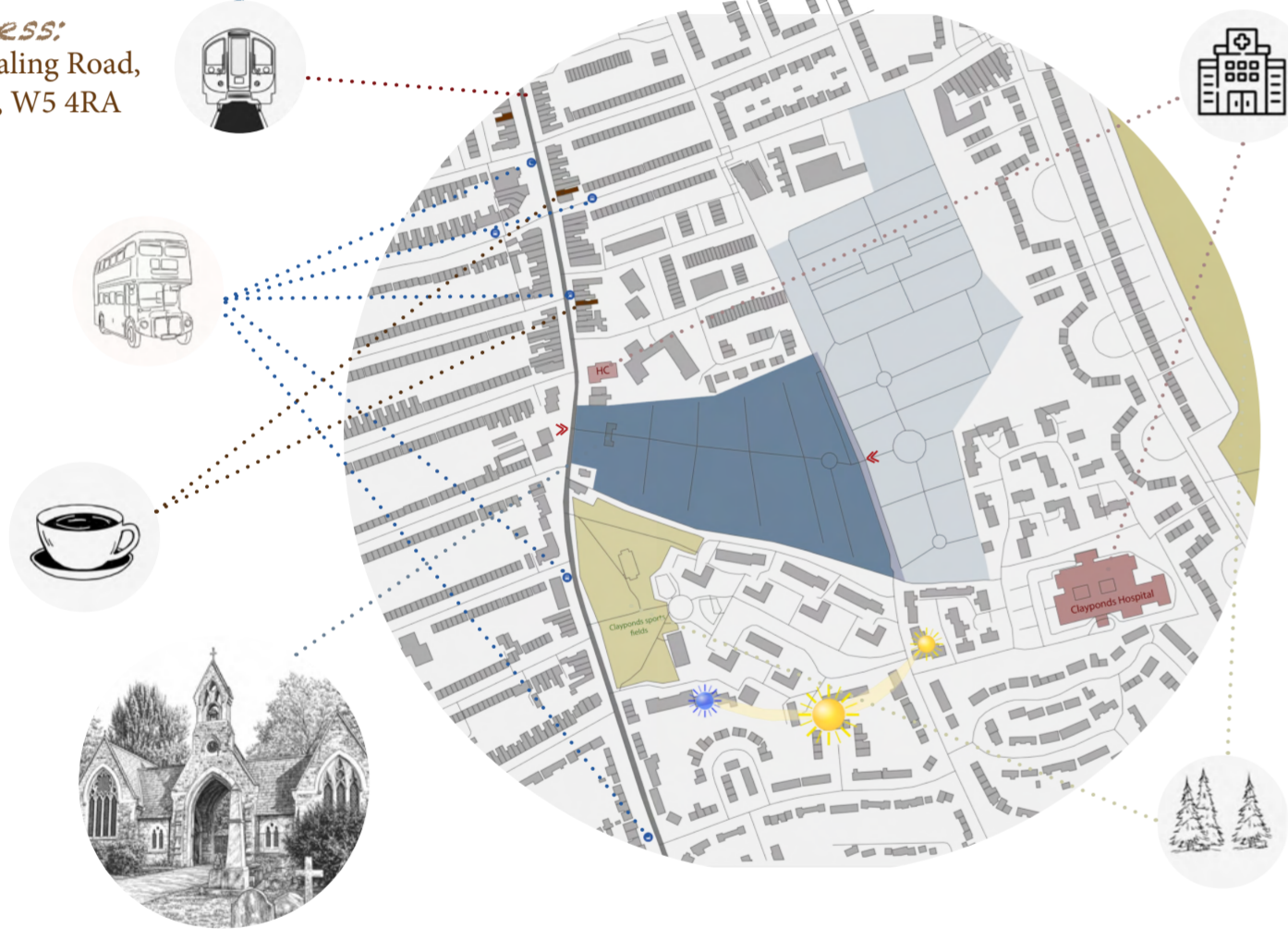
Where Memories Bloom Again

Karla Fantinel

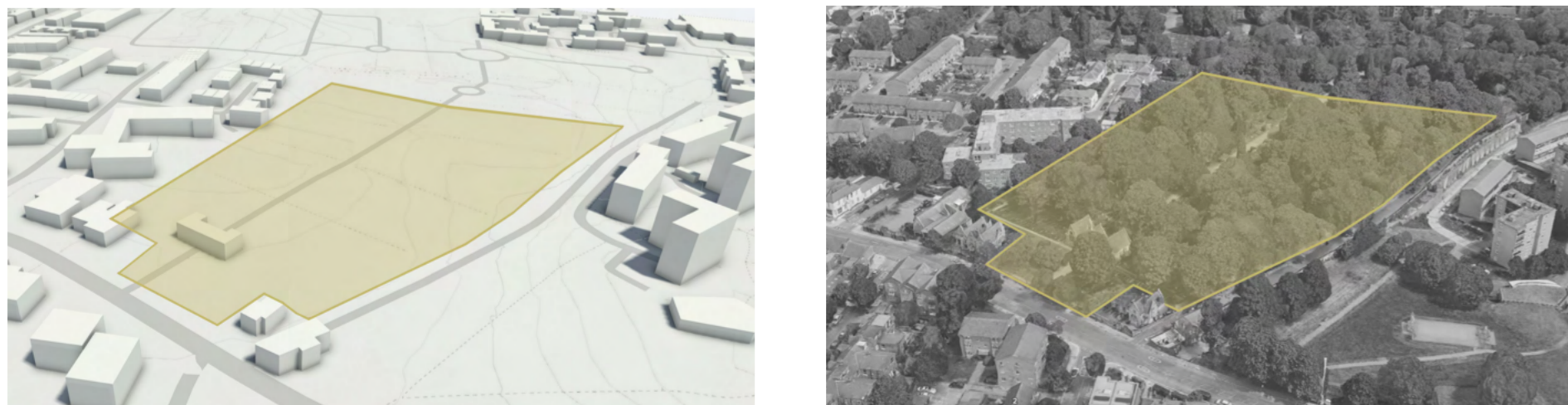
This project explores the transformation of an underutilised and deteriorating cemetery into a restorative memorial landscape that reconnects memory, ecology, and community. It reframes the cemetery not as a static site of mourning, but as an active landscape of remembrance, where memory is continuously reinterpreted through nature, movement, and time. Where Memories Bloom Again positions renewal not as erasure, but as a careful negotiation between past and present, allowing the site to remain sacred while becoming accessible, resilient, and alive once more.

1 Site Analysis

Address:
South Ealing Road,
London, W5 4RA



Site Boundaries

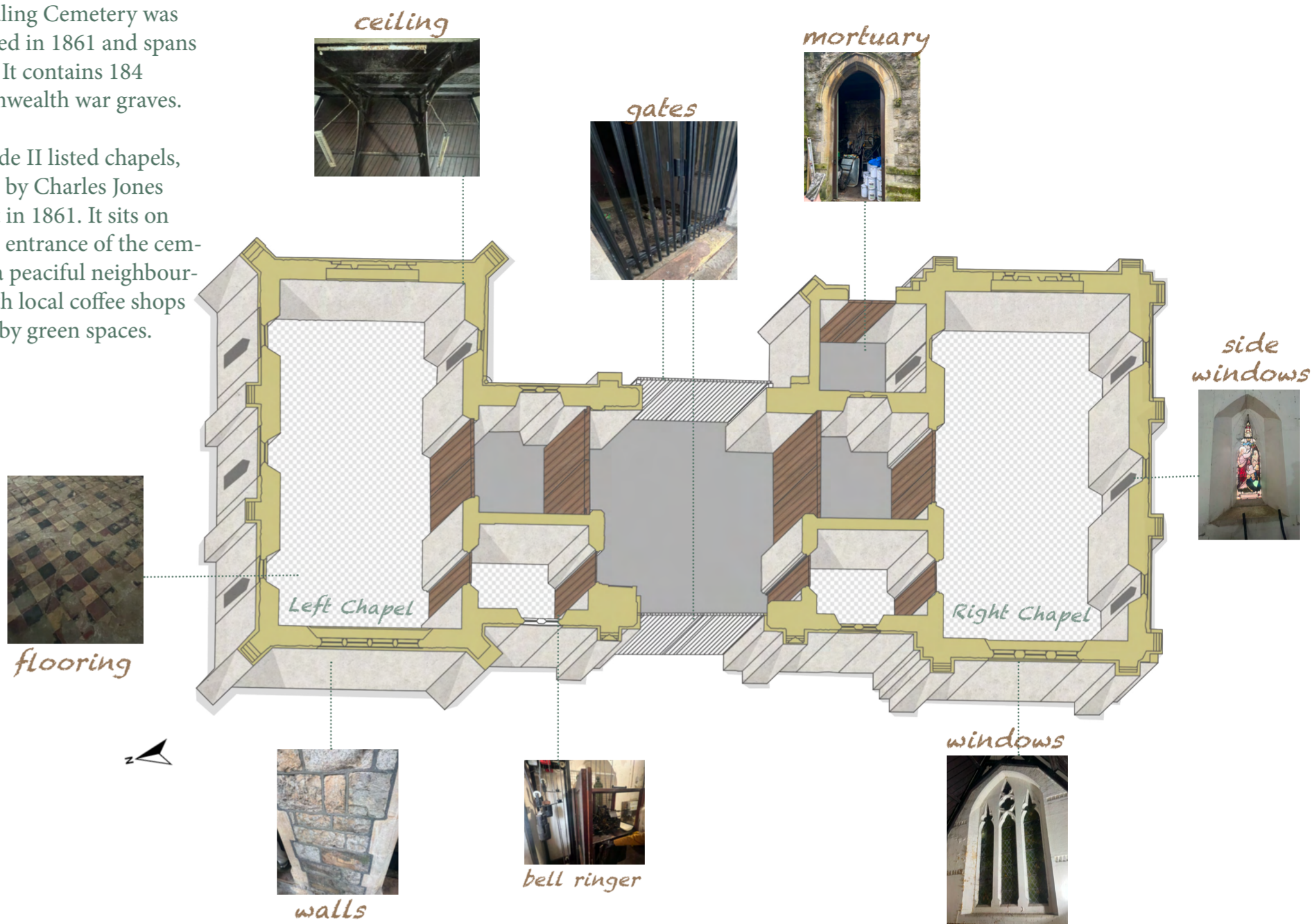


The map analysis shows that the cemetery is located very close to a residential area, making it highly accessible to the local community. There is also a hospital and a GP practice nearby, along with bus stops on the main road and convenient access to South Ealing Station, which is served by the Piccadilly and District lines. Although there is an existing park near the cemetery, it primarily functions as a sports park and does not provide the same contemplative and restorative qualities.

Existing Building

South Ealing Cemetery was established in 1861 and spans 21 acres. It contains 184 Commonwealth war graves.

Two Grade II listed chapels, designed by Charles Jones and built in 1861. It sits on the main entrance of the cemetery in a peaceful neighbourhood with local coffee shops and nearby green spaces.



Re-use strategy

This proposal will focus in supporting the local community, this includes creating a nursery, green spaces, coffee shop and by preserving the historic character of the building while adaptively reusing it in a way that generates sustainable income to support the long term preservation of both the chapel and the wider cemetery site.

A key principle of the design is reversibility: all existing walls and original architectural elements will remain in their current locations, while all new interventions will be constructed as temporary structures. This ensures that the building could be restored to its original condition in the future if required.

Current Site Plan

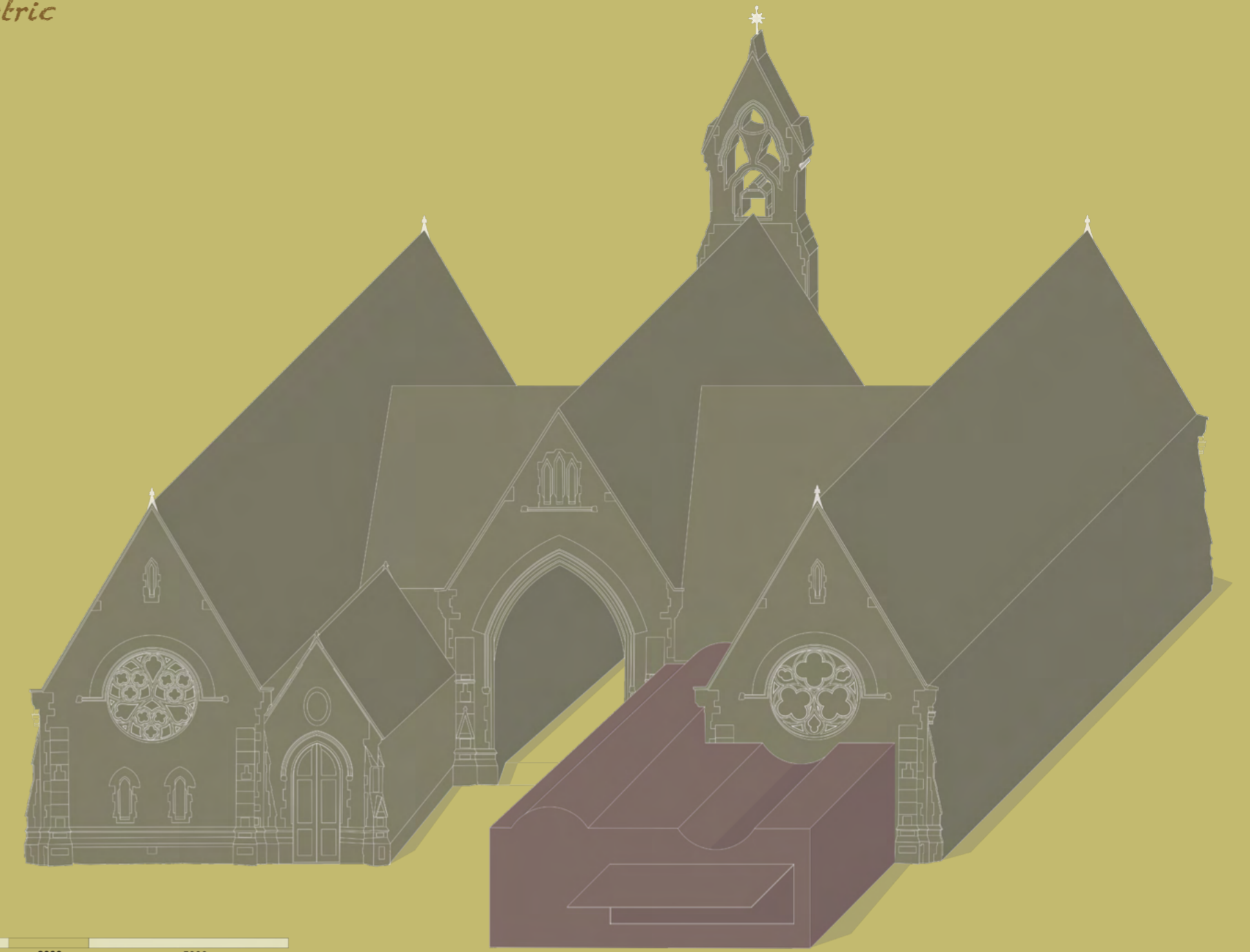


2 CHAPEL

Floorplan



Isometric



At the rear of the left chapel, a temporary glass extension will house a coffee shop serving refreshments for park visitors and meals for the nursery.

A semicircular cut out in the extension is designed to frame and highlight the chapel's beautiful stained glass window, making it more visible to the public view.

This addition would help activate the site socially and economically while remaining visually and structurally sensitive to the historic building.

The right chapel will be carefully restored to reflect its original character. New wall panelling with integrated seating will be introduced to protect the interior surfaces while enhancing the functionality of the space. The intention is to maintain this side of the chapel as close as possible to its historic appearance while encouraging community use through rentable events. To improve circulation and increase usable interior space, one of the interior door will be removed.

The mortuary will be adaptively reused as a gender-neutral toilet facility serving the café, chapel, and park visitors.

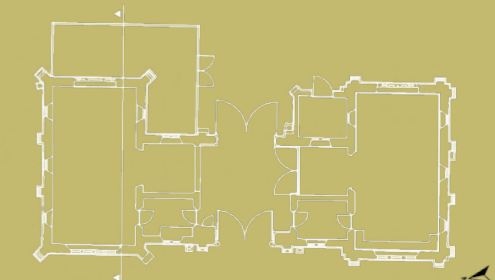
The left chapel will receive new flooring due to the severe deterioration of the existing surface. The space will be adapted to accommodate a Montessori nursery, providing an important community service while also generating monthly revenue.

A temporary partition wall will be introduced near the existing entrance to create a dedicated toilet facility for the nursery, while access to the space would be redirected through the secondary entrance.

Section



1000 2000 5000



Elevation



3 SENSORY PARK

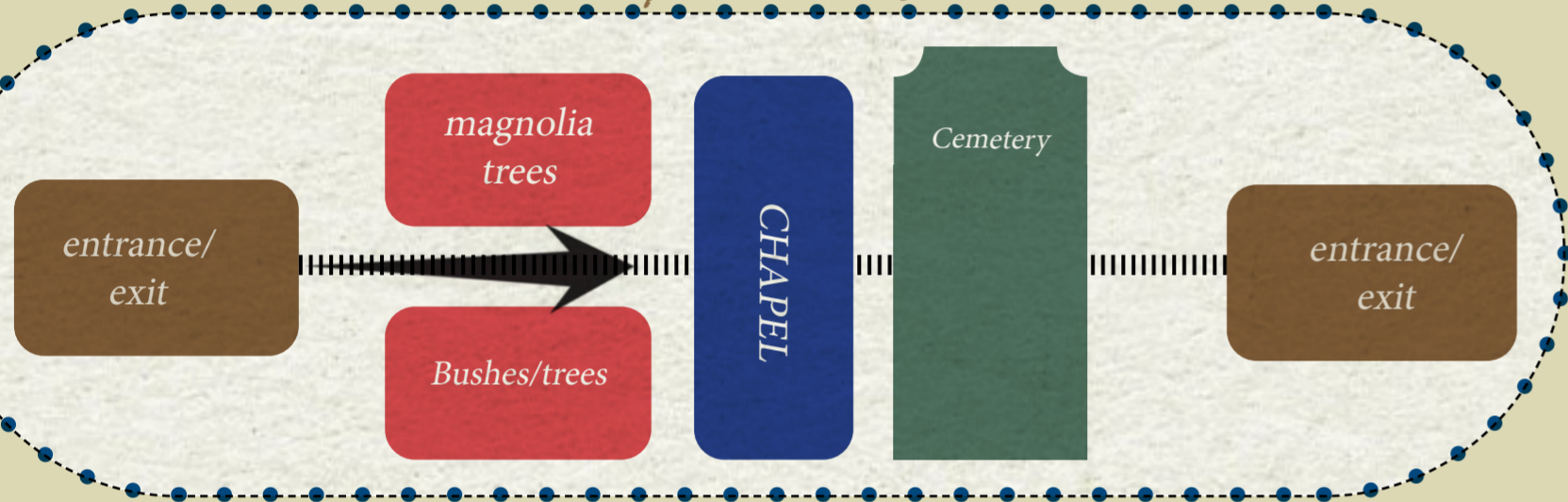
Spatial diagram

The current spatial layout of the cemetery follows a linear circulation pattern, where most users simply pass through the site as a shortcut walkway without exploring the surrounding areas. My proposal is inspired by the circulation strategy used in IKEA stores, where pathways are carefully designed to guide visitors through the entire space and encourage exploration.

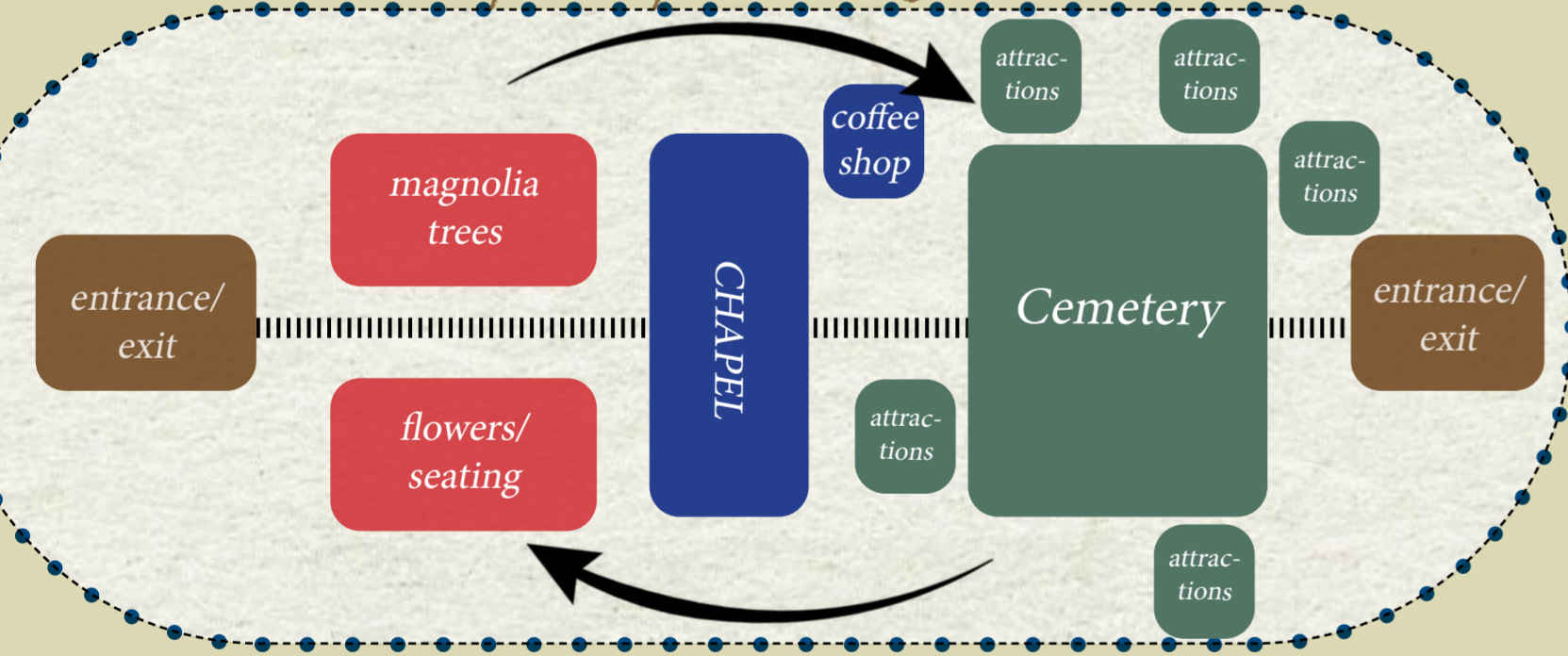
The design will introduce a series of attractions, sensory experiences, and activity spaces distributed throughout the park while remaining respectful to the graves and the historical significance of the cemetery. By creating a connected pathway system, users will be encouraged to move through and engage with the whole site rather than only using the main route.

In addition, the introduction of walking and running routes around the cemetery will promote physical activity, wellbeing, and community interaction, encouraging visitors to experience and appreciate the beauty, tranquillity, and landscape qualities of the park.

Current spatial Diagram



Proposal spatial Diagram



Modification throughout the century...

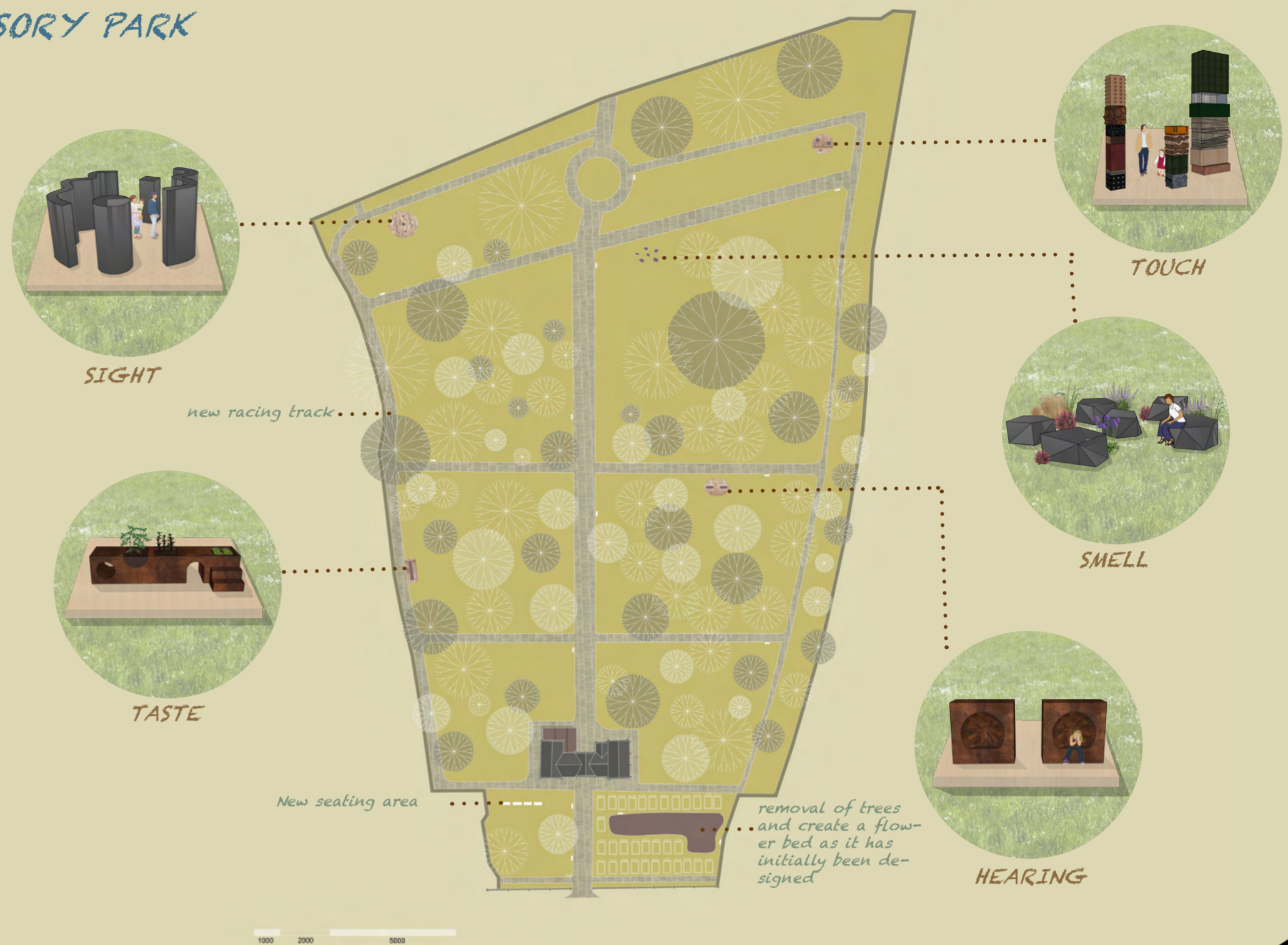


Early 20th century

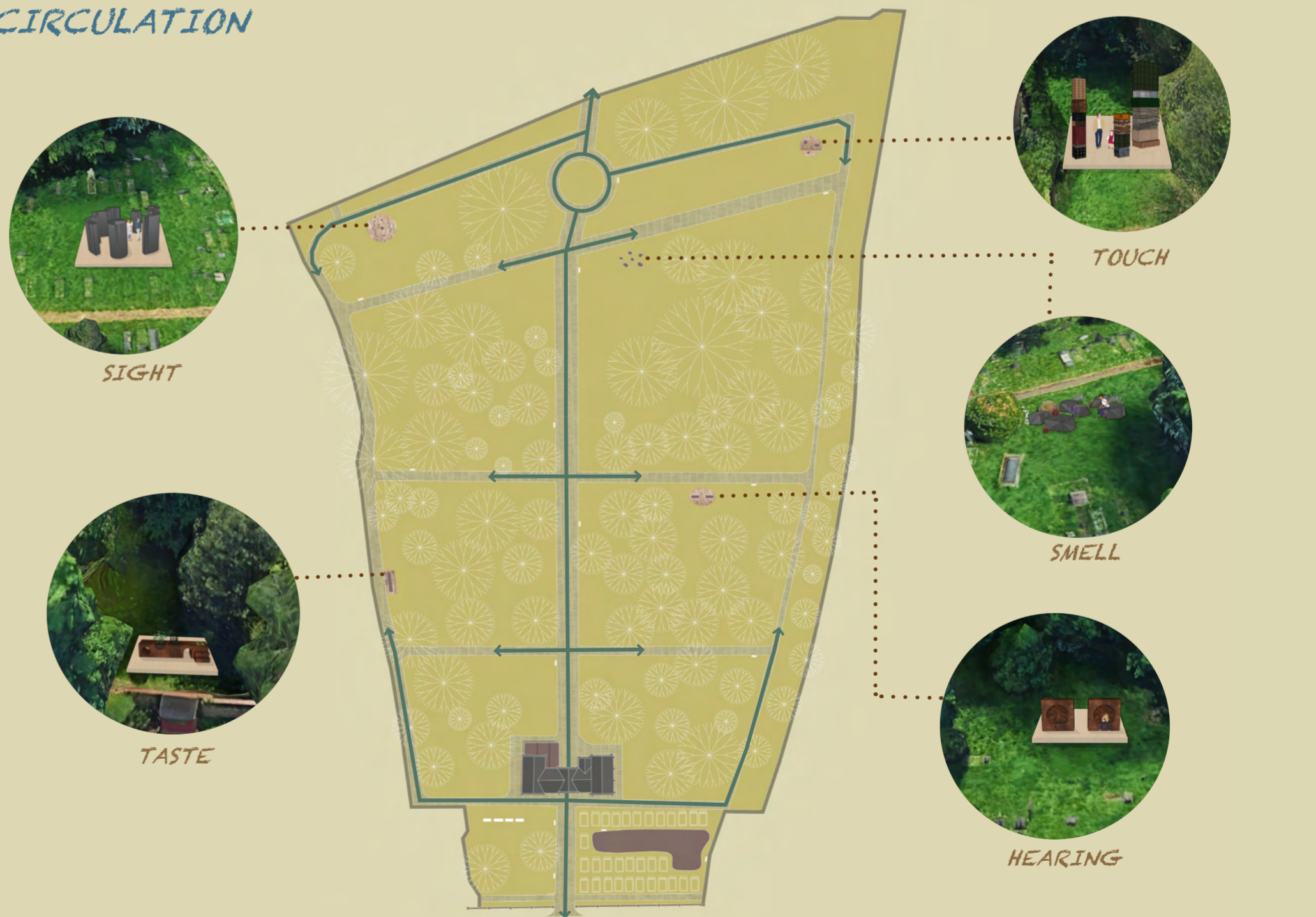


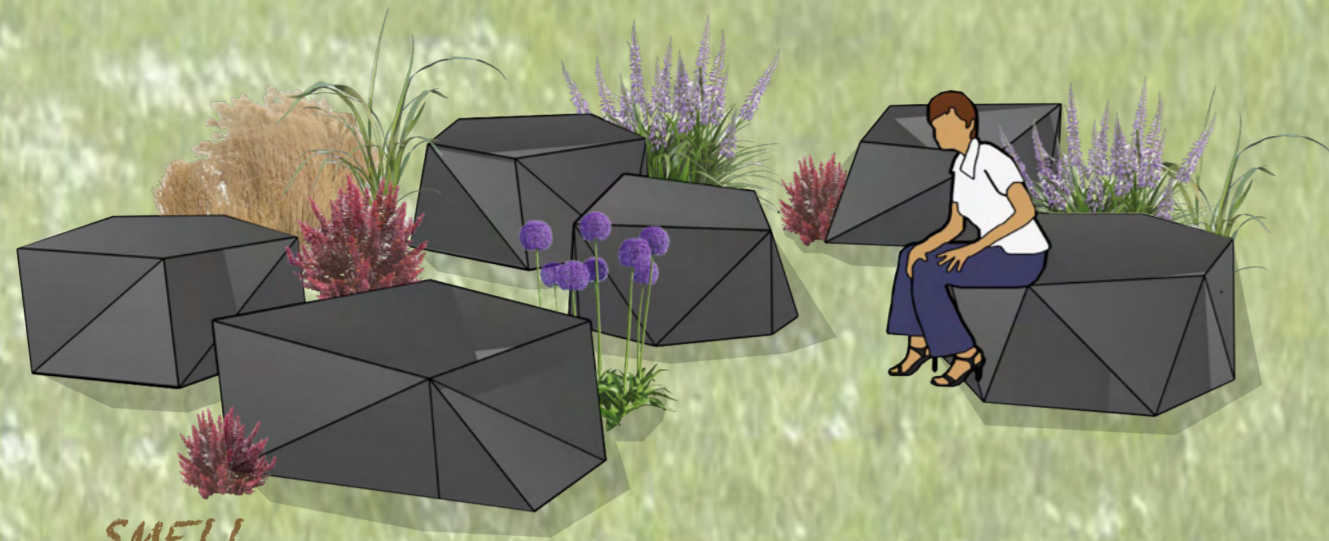
21th century

SENSORY PARK



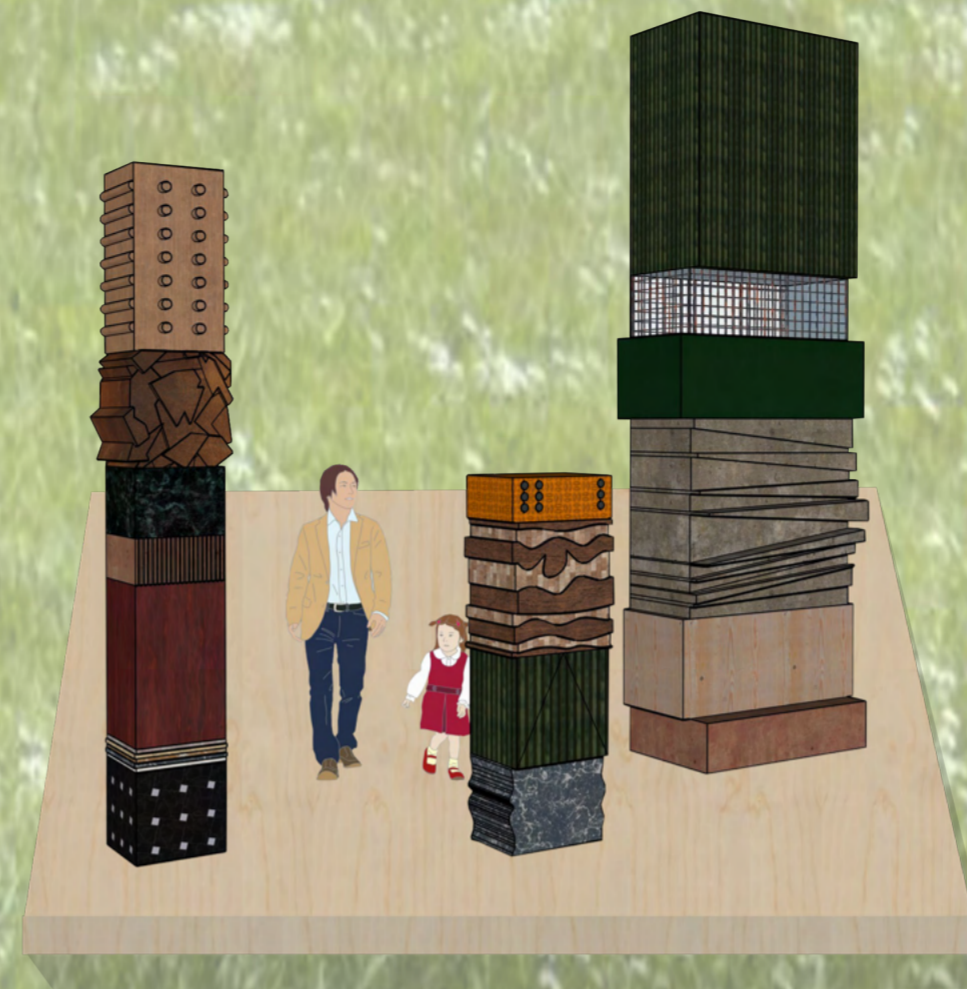
SITE CIRCULATION





SMELL

Organic metal benches has been designed around flowers to enhance the sensory experience of smell, creating a comfortable space for visitors to pause, relax, and engage with the surrounding scents



TOUCH

A series of sculptures with varied shapes, textures, and materials has been designed to encourage tactile interaction and sensory exploration



TASTE

An elevated table with an integrated planter creates an accessible space for the public to engage with and enjoy British berries



HEARING

Two iron benches have been designed with a semi-circular form to enhance acoustics, amplifying the surrounding sounds of nature and wildlife for a more immersive experience



SIGHT

For the sight attraction, twisted mirrors have been designed to distort reflections and transform the surrounding views into an interactive visual experience

The park has been designed primarily for the local community, with a particular focus on families and children. It aims to provide an inclusive space where people can enjoy nature, exercise, play, and social interact in a safe and engaging environment.

A key feature of the design is the inclusion of five distinct sensory attractions. Rather than concentrating activities in one central area, the sensory attractions are spread across the park to promote continuous movement through the landscape. This approach encourages visitors to experience the site entirely, discovering different environments, pathways, and activities as they move through the park. As a result, the design creates a more dynamic and immersive experience.

A small number of graves may need to be respectfully relocated to accommodate the temporary structure near the chapel.

To minimise impact on the site, the attractions will be installed on raised flooring systems designed to protect the surrounding environment. The structures have also been carefully positioned in areas where no graves are present.