

To address the issues of social justice

but what defines social justice?

What is social justice to you?

Social justice to me is more than to just provide a place for all, with equity and facilitation of fundamental human rights.

While these should be the essential characteristics of all building projects,

social justice delve into a deeper connection, the common humanity — the universal intangible nature of human emotions and the innate desire to be **HEARD, SEEN, and UNDERSTOOD.**

Therefore, I present you **VOID: Build to Feel.**



VOID: Build To Feel to feel - to empathize - to express

VOID is an one-of-a-kind emotional attraction, housing a collection of emotions. It utilises architecture, lighting, material and finishes as the medium to provoke narration and evoke the nuance complexity of the five stages of grief. A place to feel, empathize and express.

VOID: Build to Feel

evoke emotions through experiencing space

by Somawatey DARA

VOID is intended as an immersive journey through the intricate landscape of grief. Its architecture, lighting, materials, and finishes are carefully curated to serve as a canvas for the diverse emotions experienced during the grieving process. The intention behind VOID is not to provide a remedy for grief, but rather to offer a space where individuals navigating through sorrow can find solace and resonance in the shared complexity of their emotions.

Visitors are encouraged to confront their emotions head-on and find solidarity in the acknowledgment of their pain. At the same time, the space invites companions of those grieving to witness, to empathize, and to gain a deeper understanding of the intricate chain of emotions their loved ones are experiencing. It seeks to promote the values of compassion and empathy with the aim to contribute to a more understanding society with supportive communities where people are better equipped to assist one another during difficult times and destigmatizing discussions about grief and mental health.

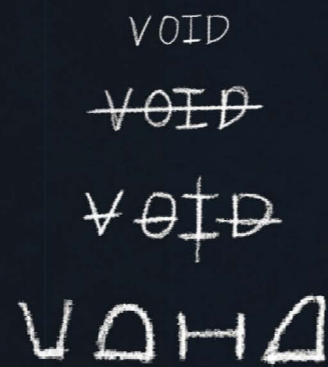
LOCATION

1 Bishop St, Portsea,
Portsmouth PO1 3DA,
United Kingdom

VOID is an enjoyable experience
VOID is an uncomfortable experience
VOID is a learning experience
VOID is a place they feel understood

Sense of Arrival: the Glitch

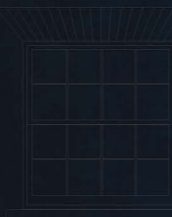
the experience starts at the first step



Conceptual Facade Sketch

Frame the doors and windows following the manipulated shapes of the word VOID.

Manipulate Window Shape | Protrude and Concave



existing

preserve and reuse the existing Georgian window



add geometry

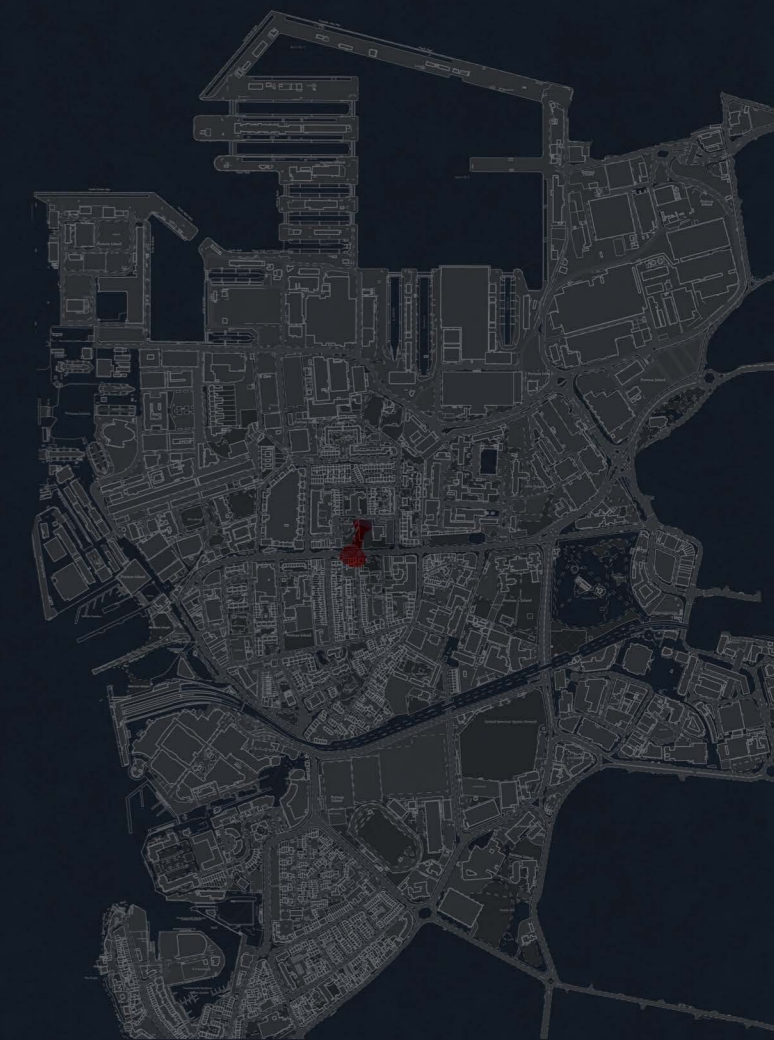
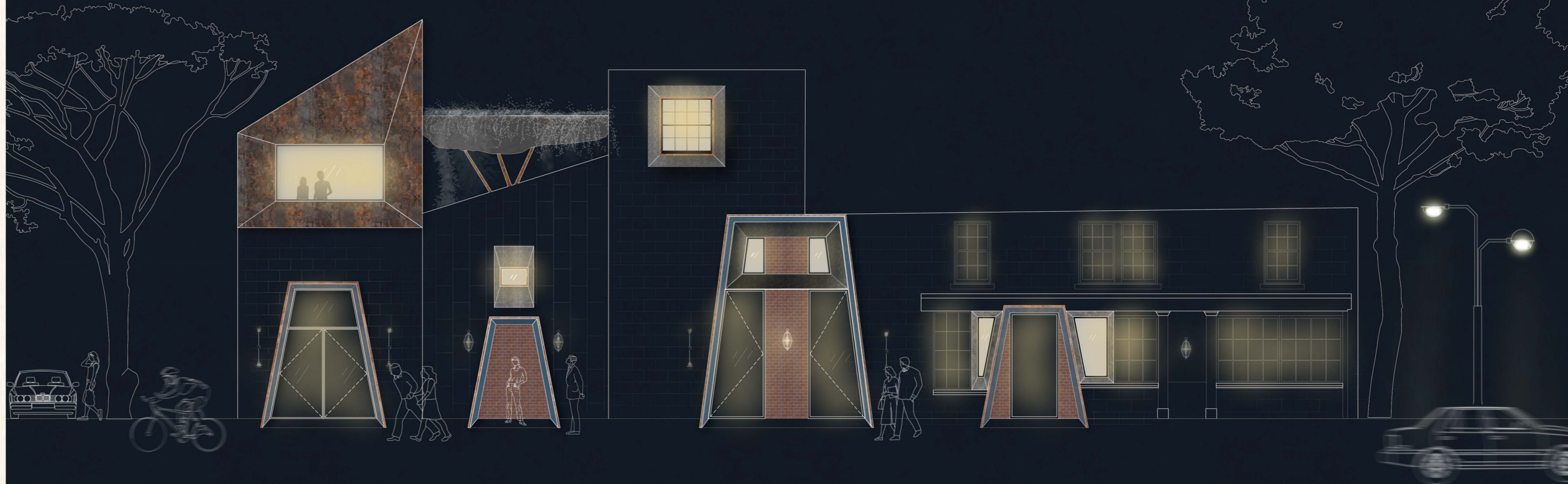
add protruding geometry to create an illusion of a 'portal'



add geometry

newly proposed window — existing window with galvanized steel finish and corten steel frame details

Just like how eyes are referred to as 'windows' to the soul, doors and windows act as portals gradually transitioning users between the outside (exterior) to the inside (interior).



Situated at the heart of Portsea, VOID exists within the shell of the Treadgolds building. Treadgolds is a Grade II listed structure, composed of four houses constructed at different time period. The houses were originally intended for dockyard personnels until they were acquired by a blacksmith, John Jones. A portion of the house was converted into a metal workshop, in which later inspired the material narrative of this project.

An inclusive place for grief :

a universal human experience that transcends cultural, racial, age, and socioeconomic backgrounds

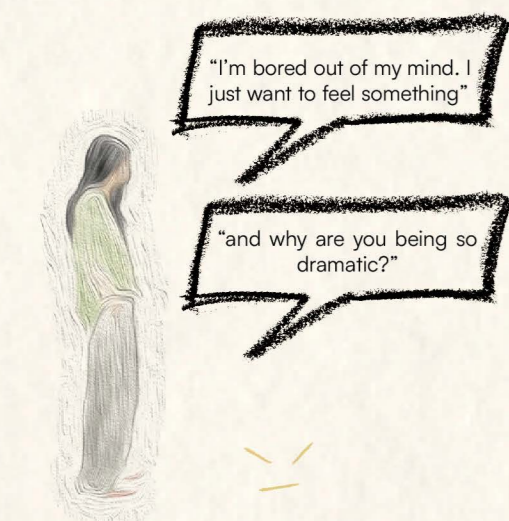


PAINTING THE PERSONAS

William (28)

William is a London bookstore owner who heard about this 'cool emotional' spot in Portsmouth from his friends. He arranges a date with his girlfriend to come along on an emotional journey.

#Nottinghill



Yuna (24)

Yuna is an undergraduate who has been diagnosed with Anti-Social Personality Disorder since the age of eight. She frequently experiences intense feeling of anger and frustration more clearly than her happiness and fear.

Notable trait: hard to or incapable of feeling certain emotions

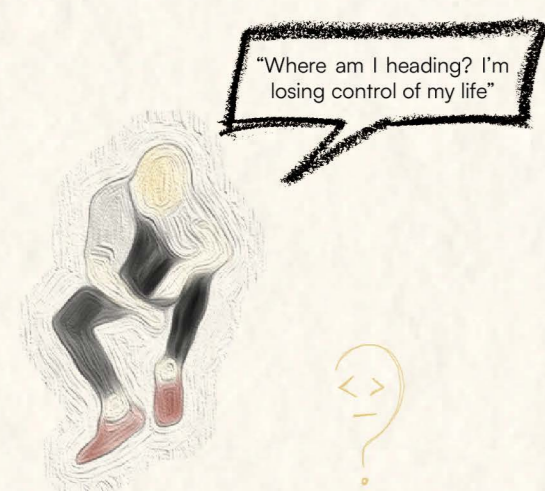
#theZombieKid | It's Okay to Not Be Okay



Donavan (50)

Donavan is a successful accountant with a cheerful demeanour. He has a teenage daughter who is grieving and slipping into depression following the passing of her bestfriend. Donavan decides to come here just to feel what she feels.

#CAKE



Raymond (20)

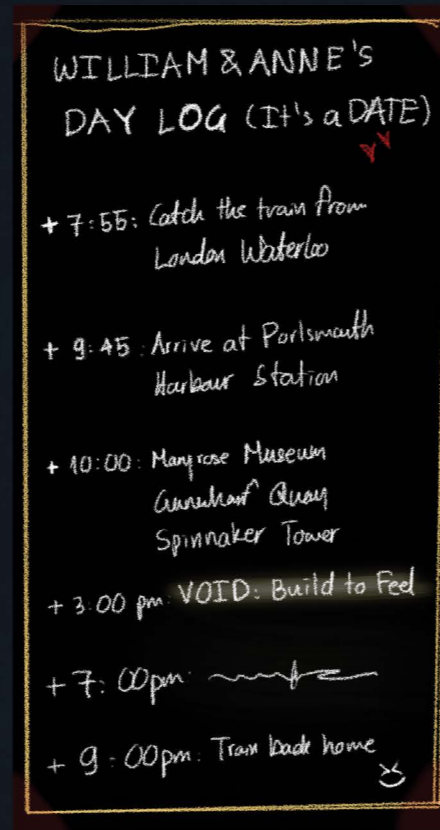
"Raymond is a prodigy," everyone around him claimed. He has low spectrum autism and is a recent graduate from a prestigious university. Never quite sure what to do after graduation, he is experiencing doubt and uncertainty.

Notable trait: struggle to recognise different emotions or feelings

#Rainman

The Experiences

through his eyes: William's journey through VOID



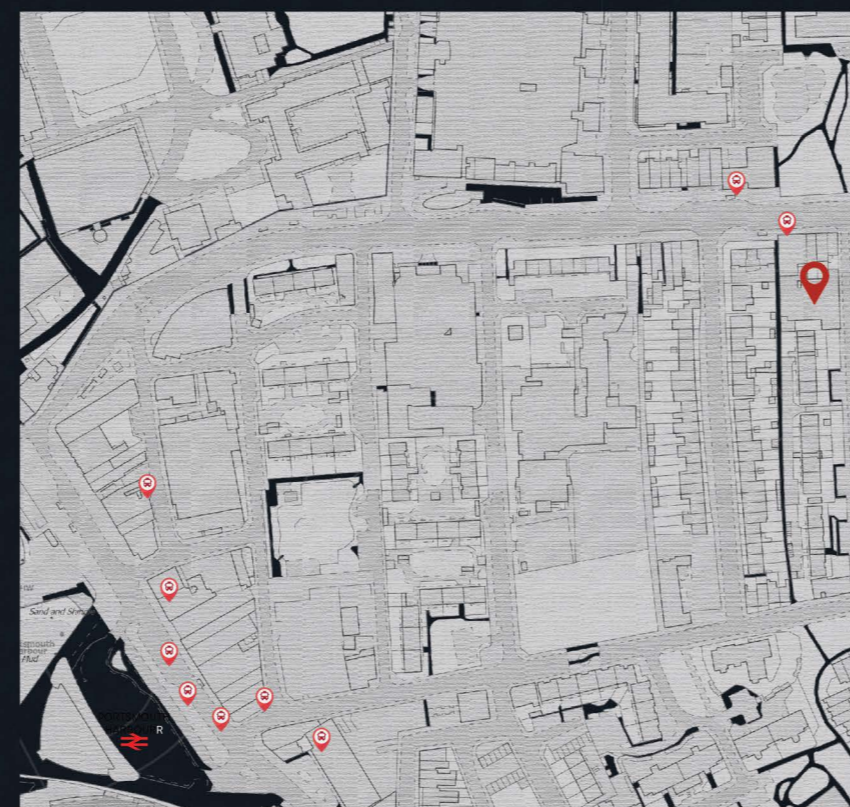
William's (and Anne) day log for Portsmouth trip



List of Surrounding attractions including VOID

Existing Accesses

Road Access and Public Transport



--- Main Road --- Primary Access

There are multiple bus routes running along the main road. Portsmouth Harbour station is just seven minutes walk away. The primary access, Bishop Street, is a one-way vehicular road adjacent to the main street, Queen Street. The convenience of public transport and vehicular access set an advantage to the site as it is easy for the users to go around.

VOID: Build to Feel

the experience
(walk-through experience)

The Glitch

Sinking Sorrow

Denial
Shadowed Labyrinth

Anger
could've, would've, should've

Bargaining
could've, would've, should've

Depression
The Haze

Contemplation
Glowing Glimpses

Acceptance
Afterglow

the expression
(activities & cafe)

Palette (*)

Express yourself through painting in our creative workshop. Use colours and brushes to convey your feelings.

Inkwell (*)

letters I can't send

Write a heartfelt letter to someone you wish you can send to.

Akra: Messenger Cafe

A cafe where one can write a letter to their future self and it will be mailed to them on the specified date a year later

Rage Room

let your rage out without restraint

Release your anger and stress in a safe, controlled environment.

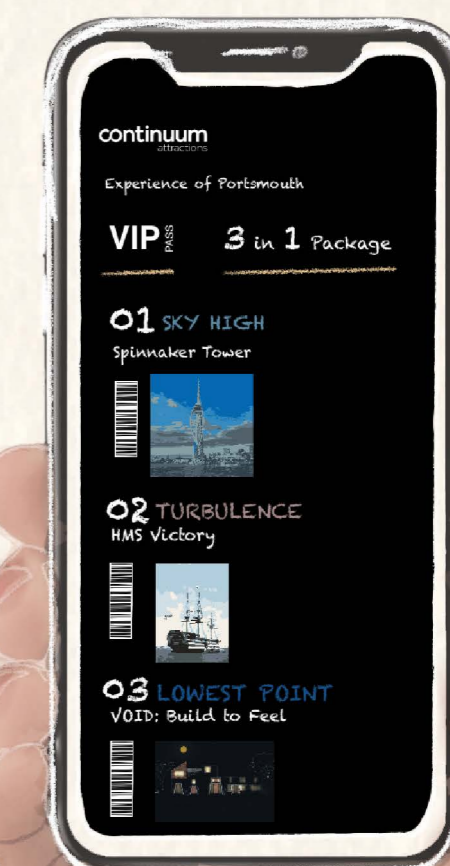
Gift shop

Area names are inspired by Taylor Swift's album— *Midnight*

* Letters and artworks left behind will become part of an evolving art installation within VOID

Experience of Portsmouth — A VIP Package

An exclusive VIP package offers by Continuum attractions, the operator of Portsmouth's famous landmark, Spinnaker Tower and the commissioner of VOID: Build to Feel Project.



VOID: Build to Feel

evoke emotions through experiencing space

Explore the Voyage of VOID

Welcome to VOID, an immersive experience like no other. Dive into the depth of your emotions. This brochure serves as your self-guided tour, helping you navigate and fully immerse yourself with everything VOID has to offer.

Embark on your journey through VOID and let your emotions flow free.

What's Inside:

List of Experiences: Discover the range of captivating experiences awaiting you.

Experience Context: Gain deeper insight into each experience. Learn about the inspirations, stories, and concepts behind the creations, enriching your journey through VOID.

Suggested Playlists: Enhance your experience with our curated playlists. Each one is designed to complement and elevate the atmosphere of VOID, providing the perfect soundtrack to your adventure.



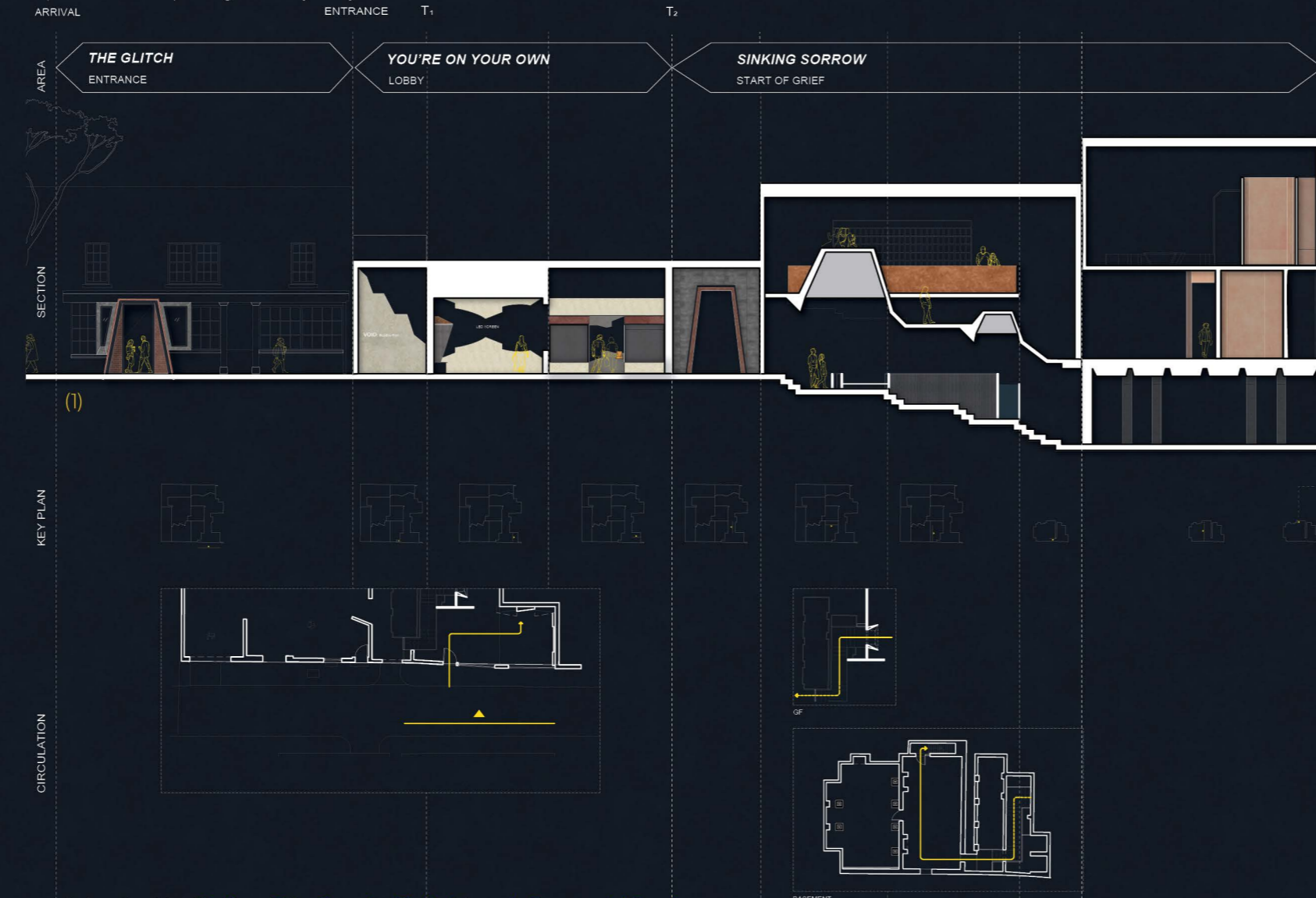
Ground Floor



First Floor

VOID: The Experiences — Through William's Eyes

sequential section expressing William's journey around VOID



1. inspired by OMA — Tres Grande Bibliothèque's Sequential Section

LEGEND

- | | |
|----------------------------------|--------------------------|
| 1. The Glitch | 9. Gift Shop |
| 2. You're On Your Own | 10. Toilet |
| 3. Sinking Sorrow | 11. Akra: Messenger Cafe |
| 4. Shadowed Labyrinth | 12. Inkwell |
| 5. could've, would've, should've | 13. Rage Room |
| 6. The Haze | 14. Palette |
| 7. Glowing Glimpses | 15. Exhibition Room |
| 8. Afterglow | 16. The Tides |
| | 17. Sitting Area |

Playlist:

"Everybody Hurts" by R.E.M.

"Tears in Heaven" by Eric Clapton

"The Sound of Silence" by Simon & Garfunkel

Start of Grief | Sinking Sorrow

emotional stage area name

During the early stages of grief, emotions can be overwhelming and baffling. It's like being caught in an emotional storm, with sadness, shock, disbelief, anger, and even numbness all coming together at once. While on the other hand, it somehow feels surreal.

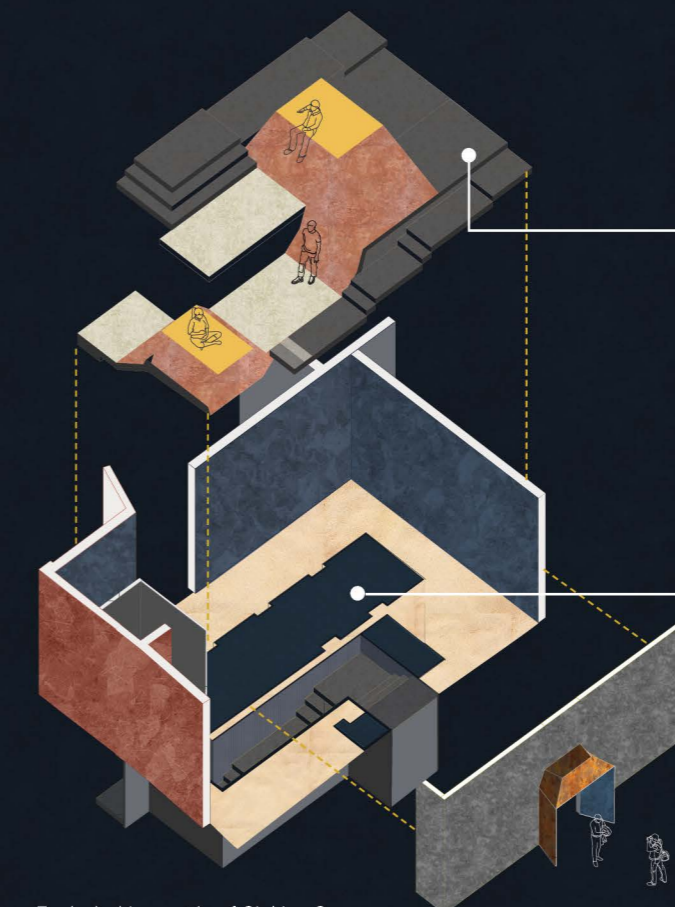
The playlist provided is simply a recommendation to assist visitors resonate with the emotions on display.

DYNAMIC CEILING/FLOOR

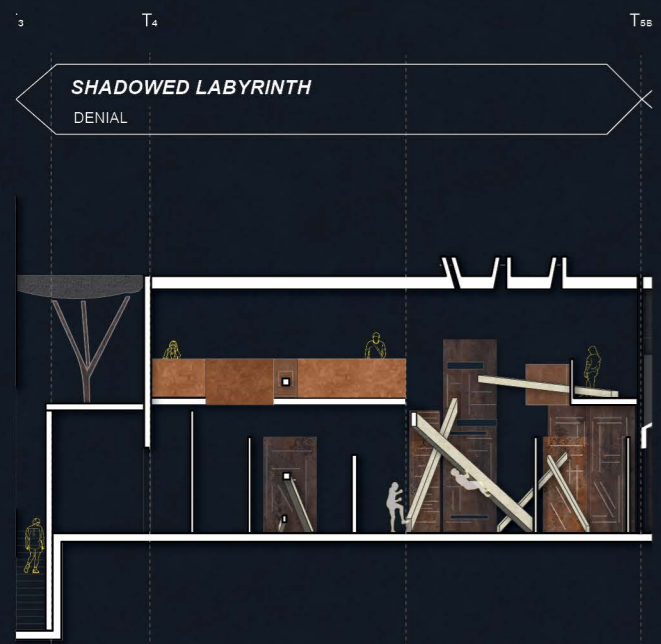
Follow the rhythm of the descending steps: the ceiling shares the same flow. With exaggerated protrusions and faceted faces, the uneven flooring is embraced as part of the experience, resulting in *the Tides* (Emotional Tides).

WATER

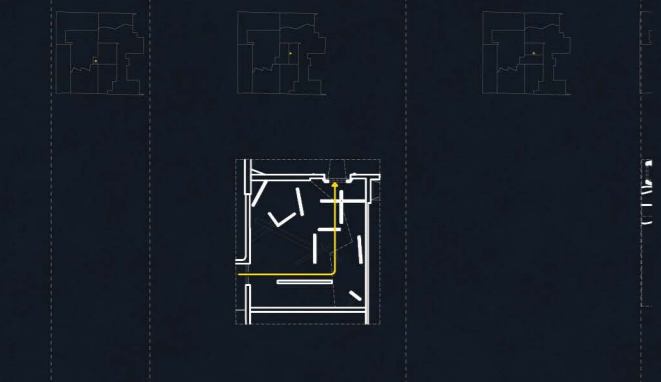
Water, once a soothing element, now sits so still, it appears as if your life has come to a halt, and everything stops. Except for you. You are sinking.



Exploded Isometric of Sinking Sorrow



01



Playlist:
 "How to Save a Life" by The Fray
 "Wish You Were Here" by Pink Floyd
 "Snow On The Beach" by Taylor Swift ft. Lana Del Ray

Denial | Shadowed Labyrinth
 emotional stage area name

In the denial stage of grief, one may experience shock, numbness, and a refusal to accept the reality of their loss, resulting in confusion and disorientation. These complex emotions are evoked through towering, maze-like rusted walls that creates a sense of being overwhelmed and small, as well as selective slits that allow limited visibility. The labyrinth-like structure mirrors the mental confusion and disorientation of denial, intentionally making navigation difficult and uncomfortable.

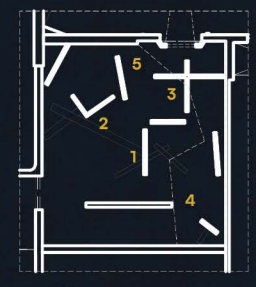


(Jewish Museum Berlin, Studio Libeskind)



Shadowed Labyrinth Model — made from MDF

hybrid atmospheric render — physical model with digital post



Key Plan



Key moments of Shadowed Labyrinth



02



Playlist:
 "Kiss The Rain" by Yiruma
 "Bigger Than The Whole Sky" by Taylor Swift

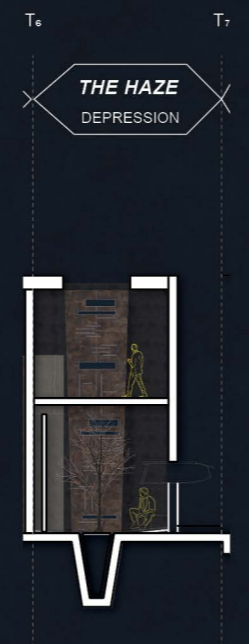
Anger & Bargain | Could've, Would've, Should've
 emotional stage area name

Here in, *could've, would've, should've*, the feelings of anger and bargain are conveyed through small, confining rooms and 'doors of madness,' where numerous doors lead to more rooms, making navigation nearly impossible and frustrating. This complex, layout reflects the inner turmoil and desperation. There are two ways out: an 'official' walkway with a large opening representing conventional paths to resolution, and tight gaps between walls representing an alternative. This design reflects the diverse ways people cope with grief, acknowledging that each person navigates grief differently.

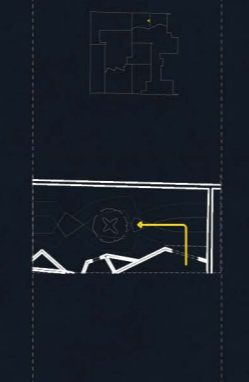


Isometric of could've, would've, should've

- RED ACCENT WALL**
Random accent of red, representing spontaneous flashes of anger
- RIBBED TEXTURE**
rugged and rough texture with muted grey finish
- WINDOW**
series of bespoke steel windows, acting as light boxes, allowing visitors to poke their heads in and look outside



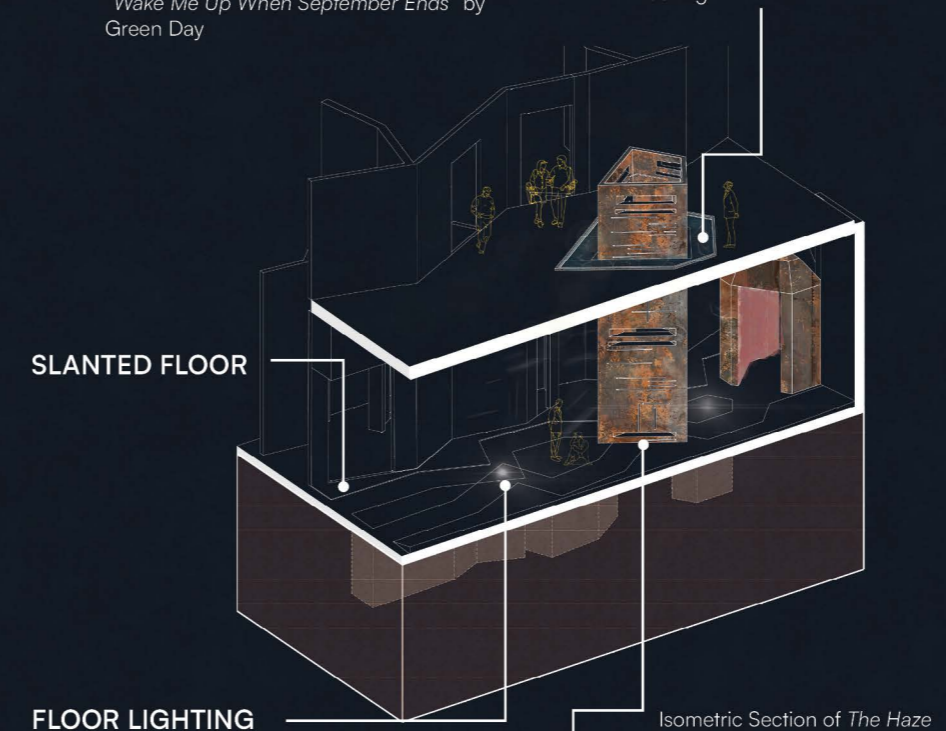
03



Playlist:
 "Creep" by Radiohead
 "right where you left me" by Taylor Swift
 "Wake Me Up When September Ends" by Green Day

Depression | The Haze
 emotional stage area name

Sadness, hopelessness, and a sense of emptiness are some of the feelings that individuals may experience during this stage. These emotions tend to be accompanied by feelings of utter despair. Lighting from below casts gigantic shadows on the ceiling when people walk past, making the space feel haunted and trapping, intensifying the sense of isolation and despair. Additionally, slits in the central vessel create light patterns, illuminating the space in an inadequate and inconsistent manner.



- SLANTED FLOOR**
- FLOOR LIGHTING**
The ground is dug two metres deep. As people walk over the diffused resin floor, where light shines through, massive shadows will be casted upon the ceiling.
- CENTRAL VESSEL**
introduces interior lighting through irregular slits

Contemplation | Glowing Glimpses
 emotional stage area name

In Zone 02, the first glimmer of light appears, reflected in the water element. Visitors can sit on the bench and contemplate, seeing the light but unable to touch it. In Zone 04, more light filters in, illuminating the water below. Though still separated by walls and visible through a thin layer of glass, the light signifies the growing presence of hope. This installation invites you to reflect on your journey, acknowledging the moments of light that guide you out of darkness.



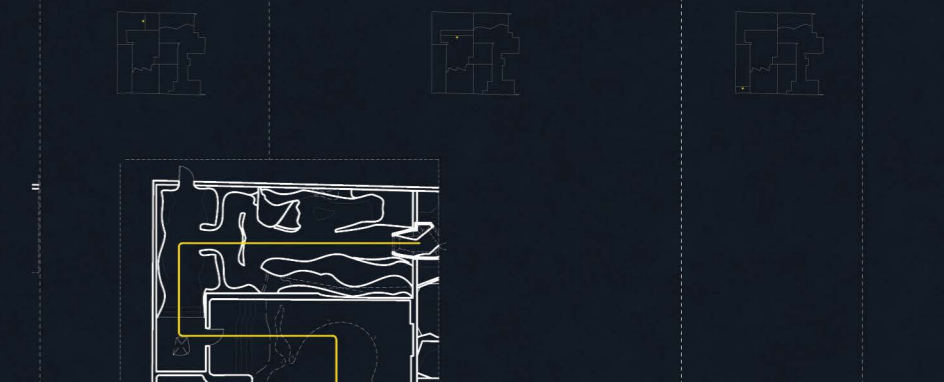
Key moments of Glowing Glimpses



Isometric of Glowing Glimpses



04



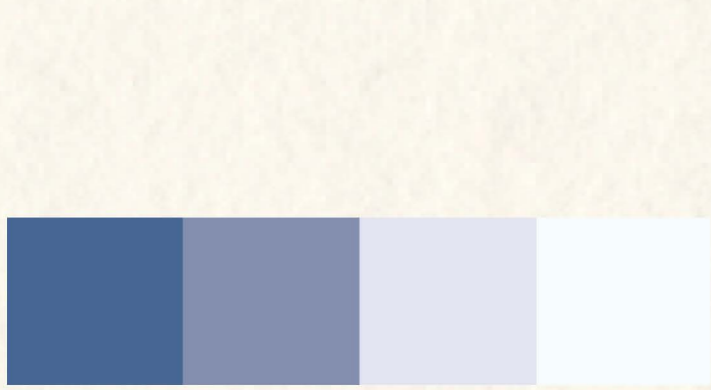
Acceptance | Afterglow
 emotional stage area name

Afterglow marks the final chapter of VOID's emotional journey. Here, the essence lies in the acknowledgment that the 'VOID(s)' once felt were valid, yet now they have been tenderly 'filled' through acceptance. Though the wounds have healed, the struggles and experiences are honoured, hence the material concept of visible scars. Surrounded by lush vegetation, the courtyard offers a refuge from the chaos of emotions. The sedum roof overhead acts as a shelter, filtering the sunlight into mesmerizing shadows, casting a tranquil ambience over the space.



Exploded Isometric of Afterglow

- LIVING ROOF (SEDUM ROOF)**
The weathered Treadgolds wall and raw-finishing structure, supporting the vibrant and living roof of grass and lush vegetation, symbolises the serenity that comes after the act of acceptance.
- WATER**
Reintroducing the water element, this time with the intention of bringing tranquility. Misty water spraying from the perimeter of our living roof gives our visitors a sense of peace and calm.



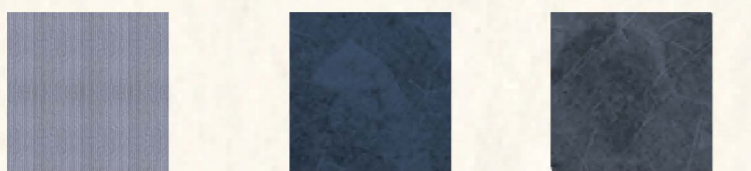
cold, lost and uncertain



Searching for Scheme | It's Okay To Not Be Okay

through scene setting, colour coordination and lighting

Muted cool tones are meticulously selected for Sinking Sorrow, representing the early stages of grief with themes of coldness, loss, and uncertainty. These hues are drawn from scenes in the South Korean television series — It's Okay to Not Be Okay, which follows the emotional journey of an anti-social children's book author. Each episode delves into different mental health issues, conveying a wide array of emotions. The color coordination vividly expresses the story and characters' emotional depth.



StoSignature Linear 30
rippled render effect

Stolit MP impression Metal
customised colour

Stolit MP impression Metal
customised colour

The Storyboard: VOID Journey in 3D
an explorative making — transform an orthographic drawing to a three-dimensional narrative



"As time passes, healing begins"



Manifesting Material Narrative | The Patina Process

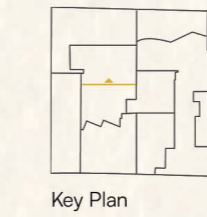
progression of time

In VOID, the corten steel finishes vary deliberately to mirror the passage of time and stages of grief. The patina process narrates a story of resilience and transformation. From the pristine surfaces of early weathering, which suggest vulnerability and raw emotion, to the deeply weathered textures that have endured so much, evoking a sense of acceptance and growth. Just as the steel's patina process reflects the inevitability of change and adaptation, so does the grieving process unfold, gradually strengthened individuals by their experiences, ready to embrace healing and renewal.

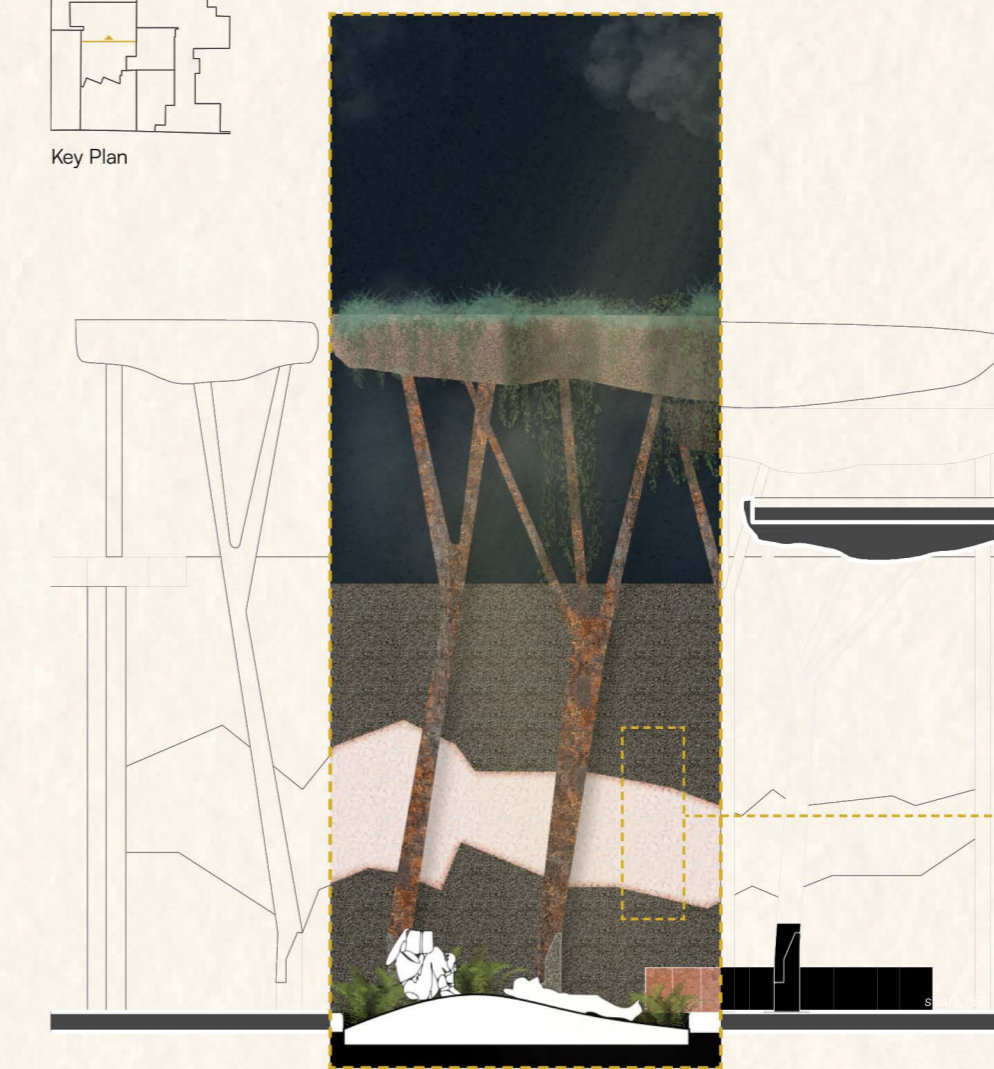
Corten Steel Series



01 02 03 04



Afterglow atmospheric section



Scars, often perceived as 'flaws,' are frequently advised to be concealed, hidden away from sight. But what if we dared to curate, manifest, and even celebrate those scars? In a world where imperfections are often shunned, the rustic finishes

of corten steel and the rugged texture of concrete represent a beautiful testament of resilience and perseverance. In this fusion of materials, we find beauty in the raw and unfiltered, embracing the strength found in our scars.

Existing Material Condition



aging eroding
Paying homage to the eroding Treadgolds bricks, the erosion pattern is the starting point of this exploration.

Material Concept

fill the void
visible scars



Accent wall material sample
A special crafted material for Afterglow, following the concept of visible scars — made from concrete and resin

Mending Broken Soul

Concrete pieces, once fractured, embodied the scars; now, they are bound together by a transparent soothing resin — to proudly present.