

Initial: Living & Working

blurring the boundary between work and rest

In the 21st century, people tend to live in a fast paced environment where work is a huge part of their day to day life. With this vicious and endless work cycle, we incline to have little to no time for socialising.

The notion behind this mixed function hospitality is to gather young professionals and start ups who are at the early stage or 'initial' stage of their careers together. Hence, the name Initial. The hostel in a way act as a community where passionate individuals can network and exchange ideas while they go on with their daily routine.

The aim of this project is to create a space for social opportunities and collaboration in our increasingly antisocial world.



Hybrid Hospitality

Module: Design: Interior Investigation

Project: Renovation

Location: Southsea, Portsmouth

Year: Year02 Semester02, 2023



CONCEPT



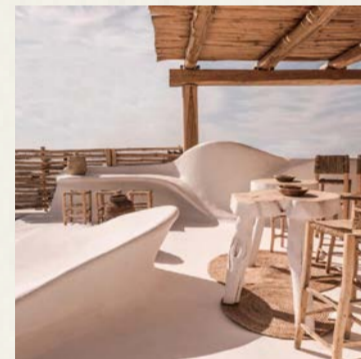
INITIAL: LIVING & WORKING

The hostel is named INITIAL: Living & Working to represent the main purpose and concept of our space. Our main users are young professionals and start ups who are at the early stage or 'initial' stage of their careers. INITIAL is a place that offers everything they need: rest, work, relax, socialise and connect at an affordable price range.



WABI SABI ESSENCE

'Wabi Sabi' is a traditional Japanese aesthetics that focus on embracing the idea of aging, flaws and imperfections. The principles resonate perfectly with our existing building in which we should value and preserve its beauty. The concept also focuses on nature and raw materials.



CONTINUITY & INTERGRATION

Rather than being a compilation of different areas, the concept of continuity is applied to create a harmony between all the areas to achieve a well intergrated interior.



FLEXIBLE SPACE

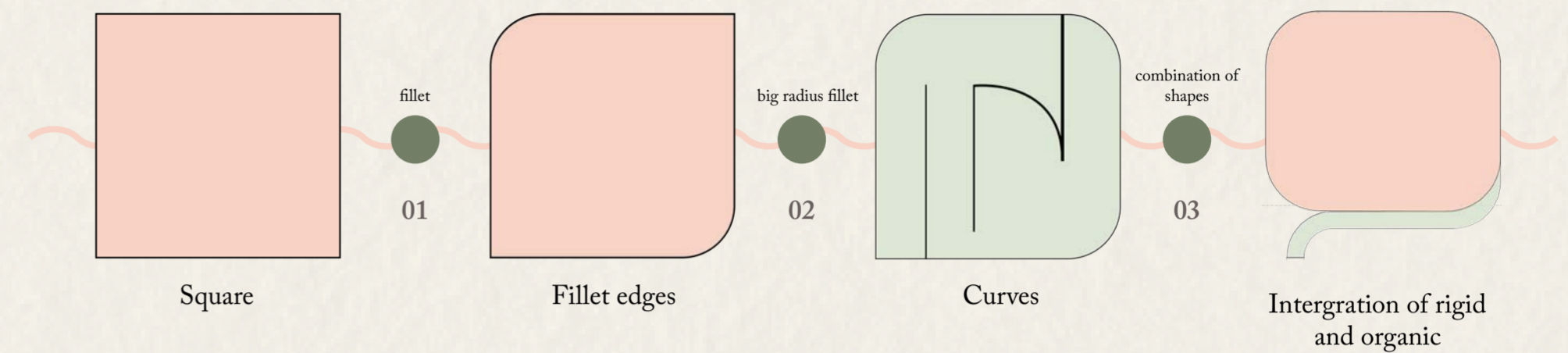
The co-working space is mostly divided by curtain/sheers. They are used to balance out the heavy structure and usage of raw finishing material while providing flexibility and privacy to the space and its users.



WELLNESS DESIGN

The hostel is designed with its users' wellbeing in mind. It has an open space layout with intergration of natural elements. Sunlight is well received with the incorporation of skylights and big glazed windows. Vegetation is introduced into the space in every floor. With its open and flexible layout there are various opputunities for social interactions.

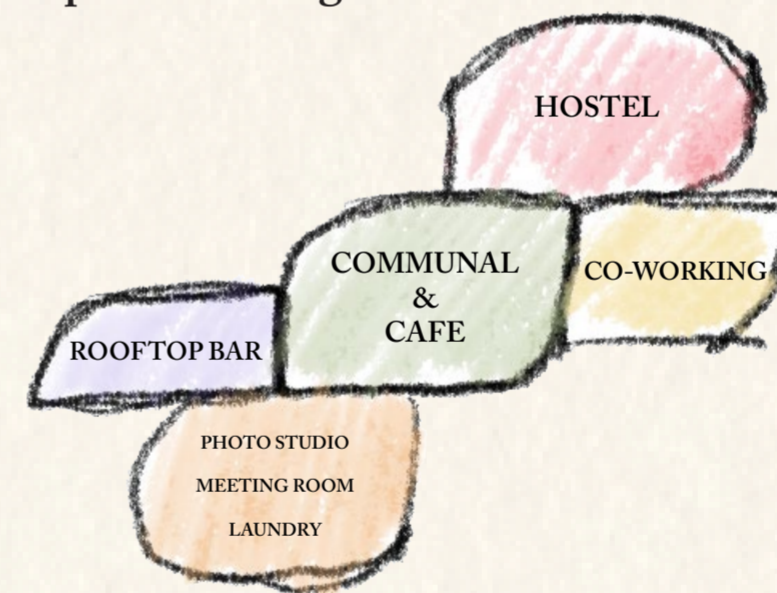
DESIGN PROCESS



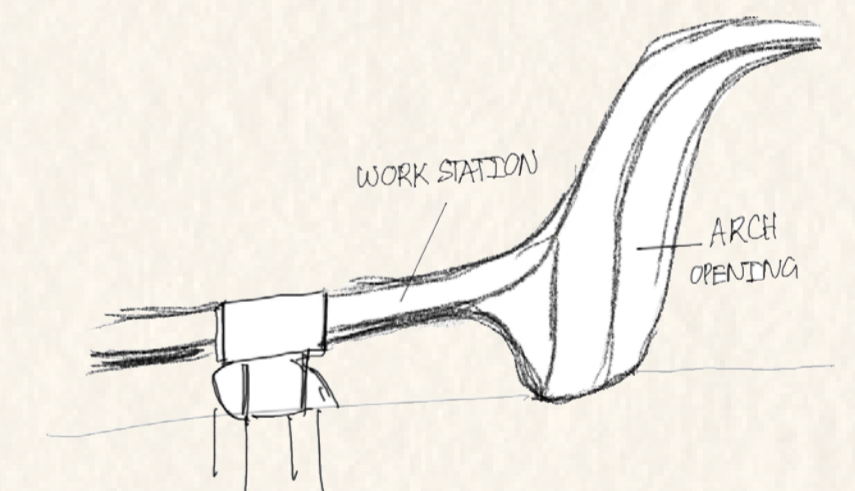
Geometry Development

The main geometry is a simple square. Using fillet technique, I am able to achieve an organic flow while maintaining a certain level of uniformity within my design. The ambience of the space is 'casual but uniform'. Organic shapes give the hostel a sense of formality and sophistication amid their casual and relaxing atmosphere.

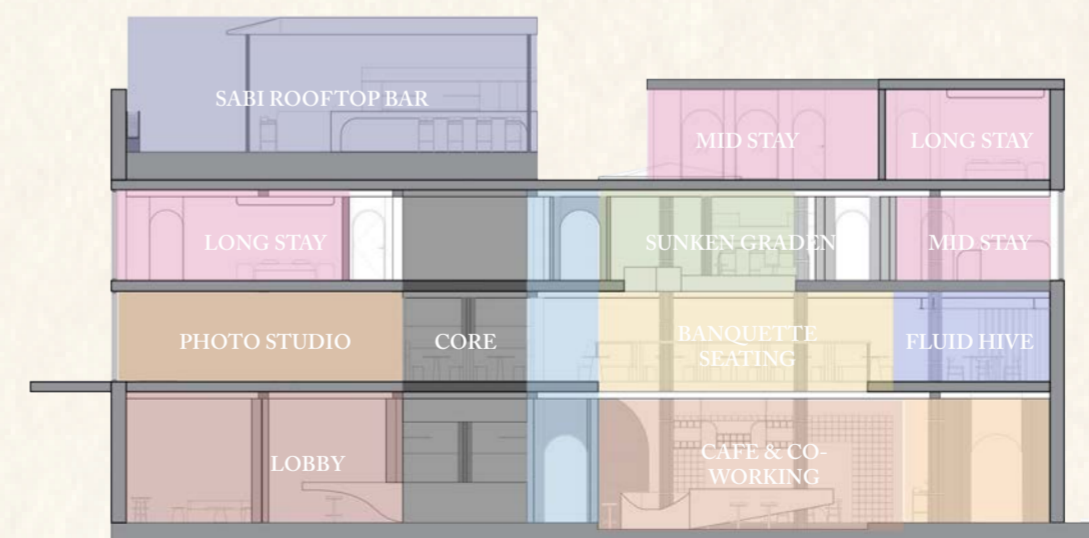
Space Planning



Conceptual Sketch

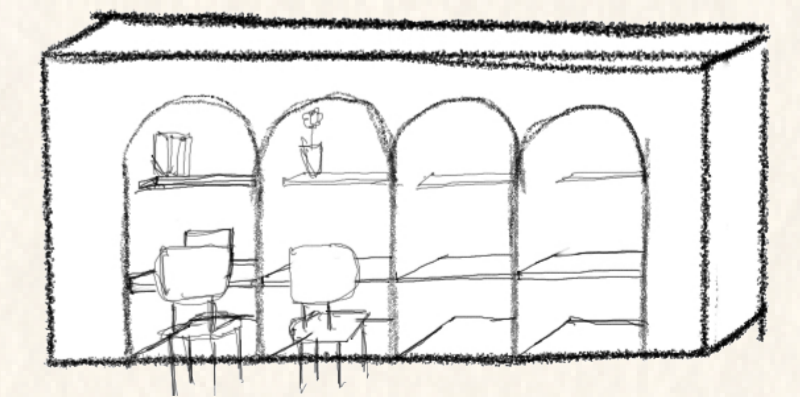


1F: Fluid island concept

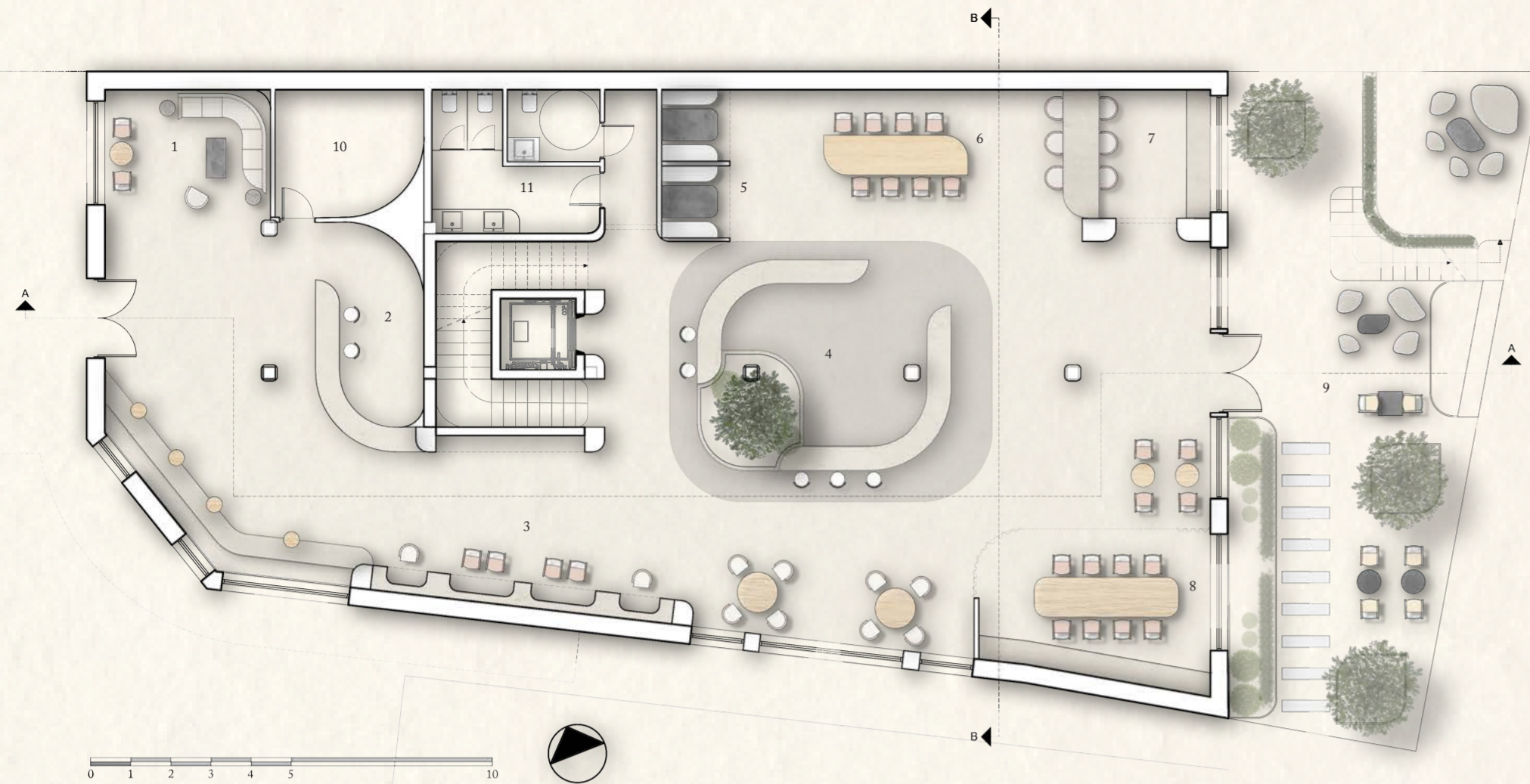


Stacking Diagram

The space spans out from a communal center core. Every floor has its own shared area to encourage unprecedented interactions and opportunities.



GF: dedicated desks concept



GROUND FLOOR PLAN

- 1. Lobby
- 2. Reception
- 3. Dedicated desks
- 4. WABI Cafe
- 5. Booth seating
- 6. Long table
- 7. Kitchenette
- 8. Meeting room
- 9. Patio
- 10. Storage
- 11. Toilet

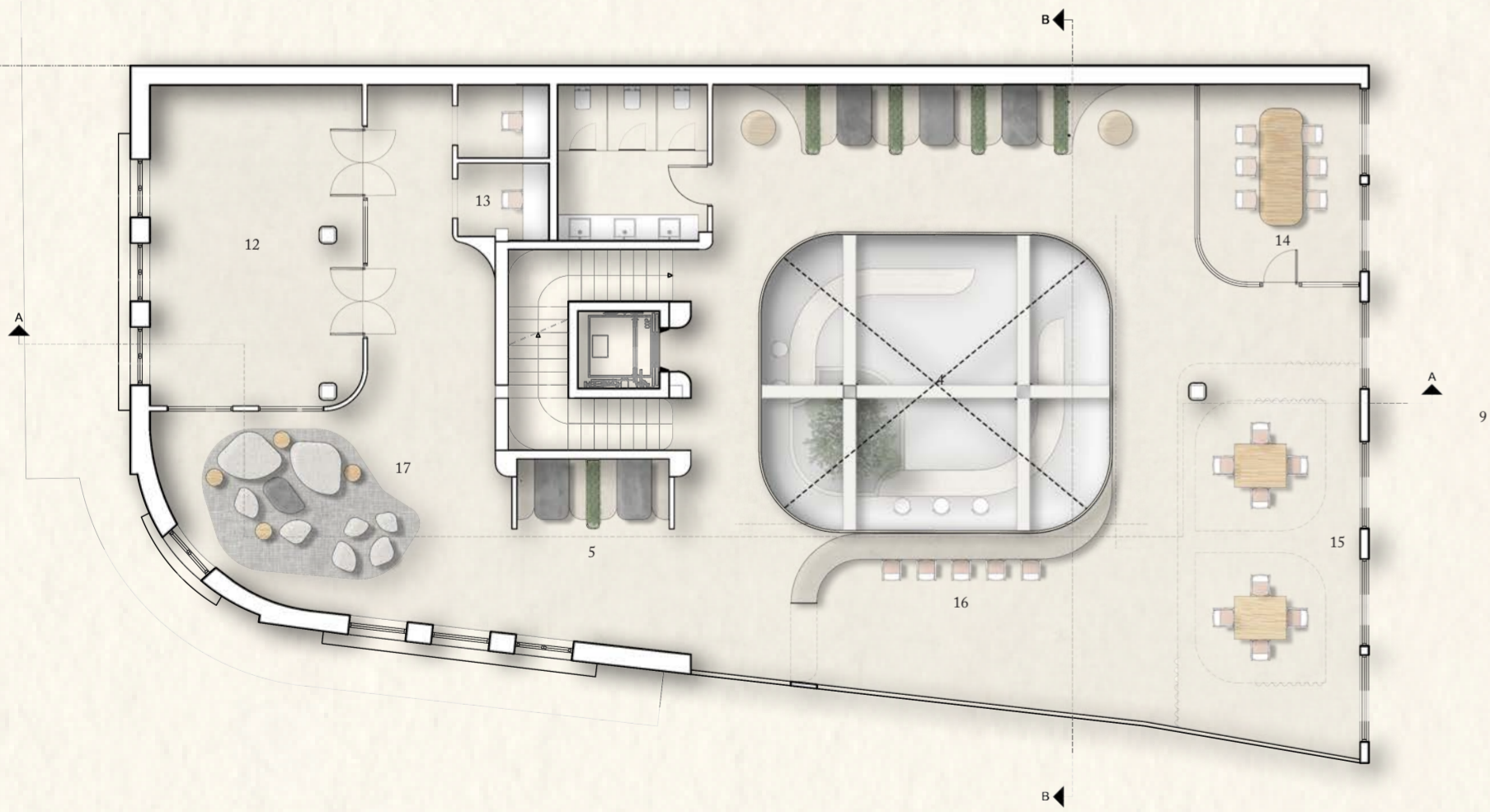


Lobby Axonometric



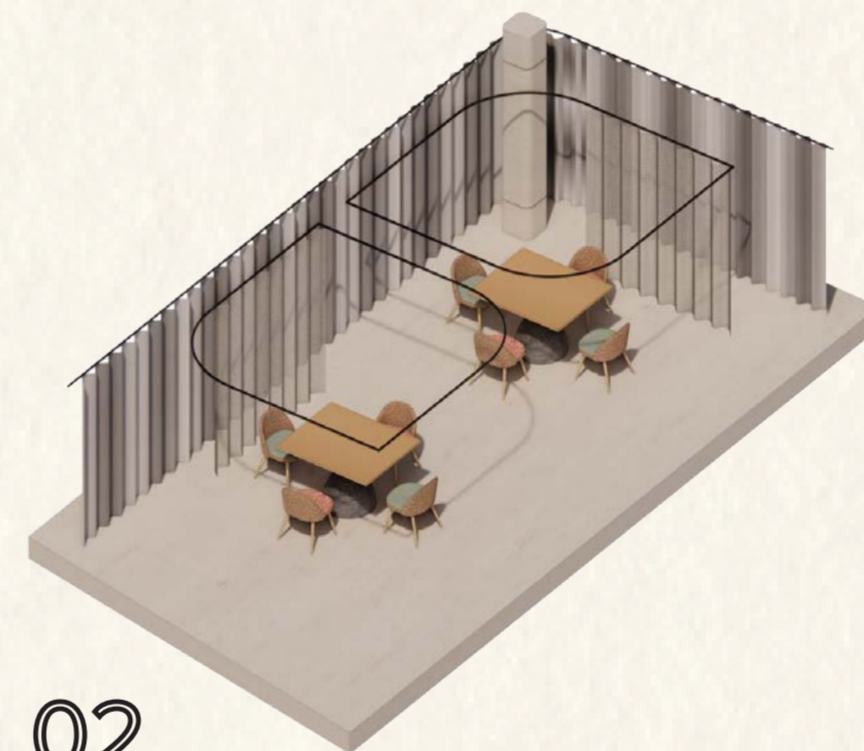
Dedicated Desks

through the medium of physical modeling and photoshop edit



FIRST FLOOR PLAN

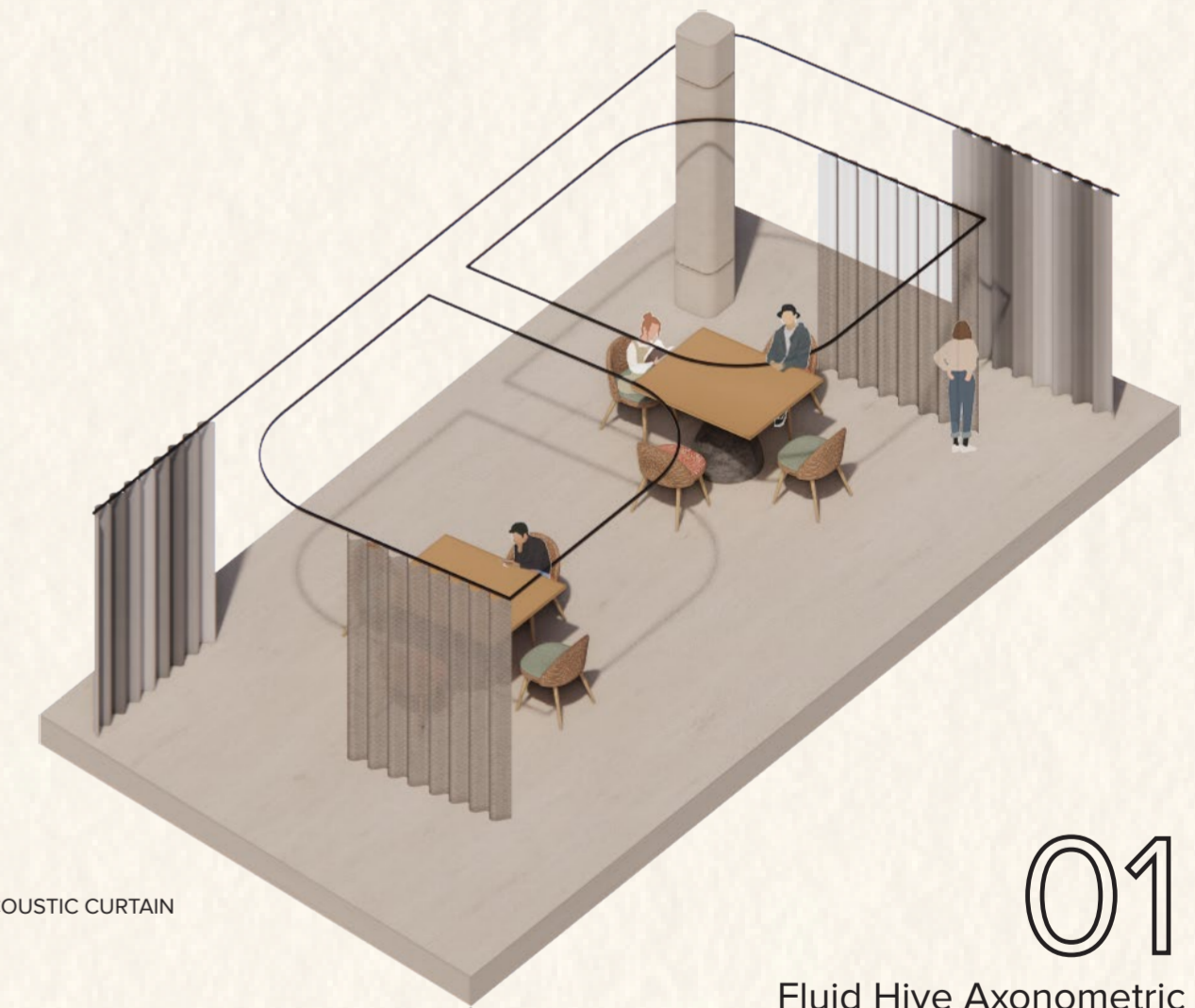
- 12. Photoshoot studio
- 13. Pod
- 14. Meeting room
- 15. Fluid Hive
- 16. Fluid island
- 17. Breakout area



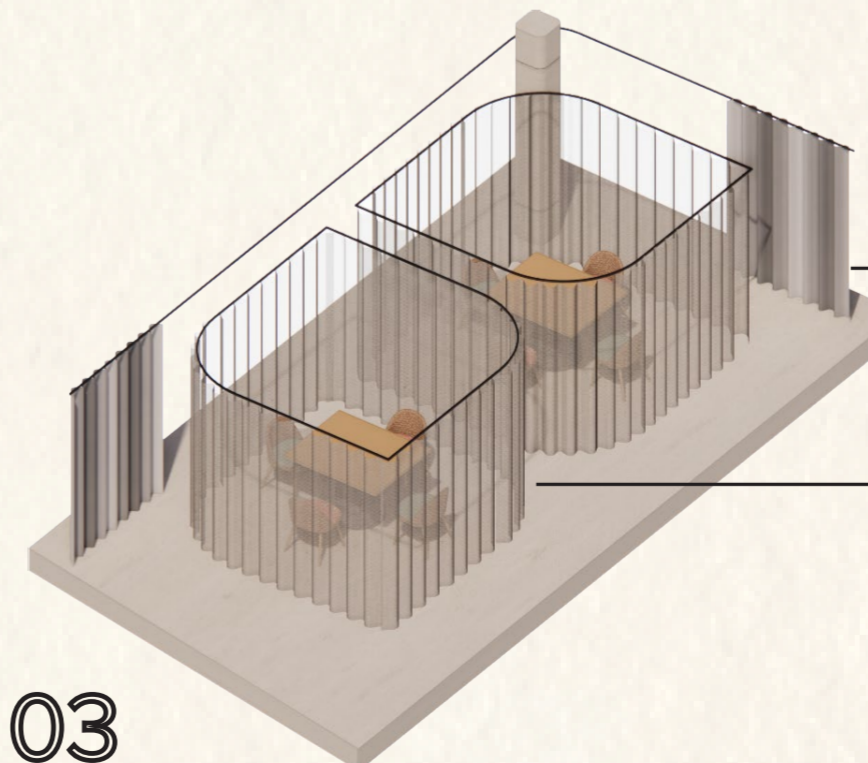
02
one spacious enclosed space

FLUID HIVE: ENCLOSED BUT NOT CLOSE

- flexible space
- open but private



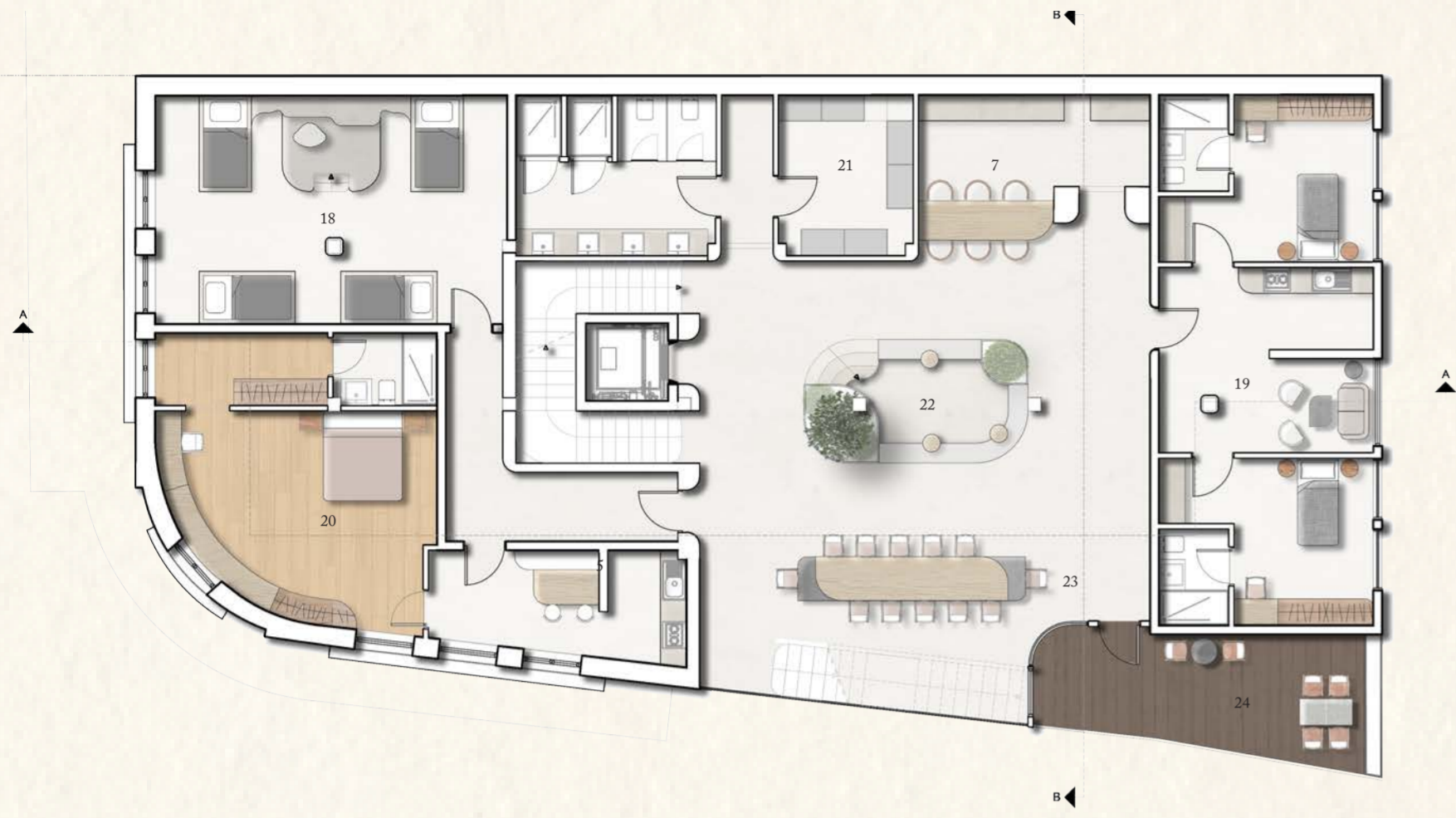
01
Fluid Hive Axonometric



03
two separate spaces

ACOUSTIC CURTAIN

ACOUSTIC SHEER



SECOND FLOOR PLAN

- 18. Short stay room
- 19. Mid stay room
- 20. Long stay room
- 21. Laundry
- 22. Sunken Garden
- 23. Communal dining
- 24. Outdoor terrace



Short Stay
Capacity: 8 people
Area : 41 m²



Mid Stay Room
Units : 4 units
Area : 19m²



Long Stay Room
Units : 2 units
Area : 53m²

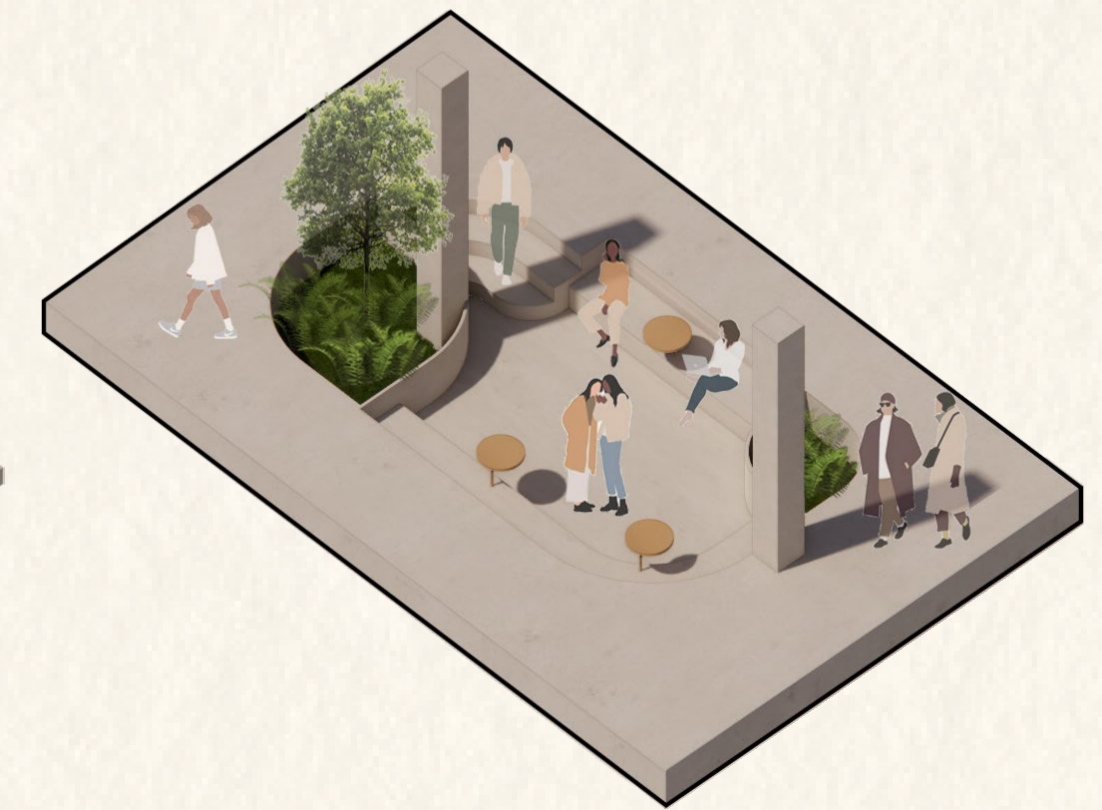


ROOFTOP PLAN

- 25. SABI Bar



SABI Bar



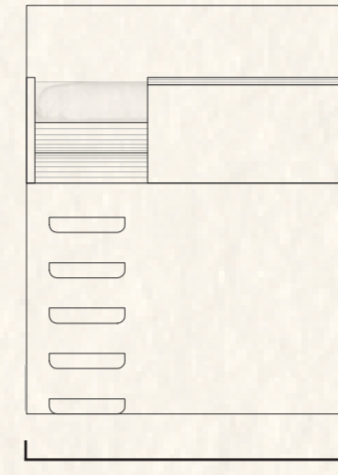
Sunken Garden

DETAILED AXONOMETRIC

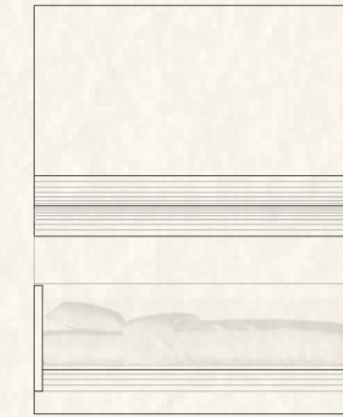


CUSTOMIZED BUNK BEDS

2700



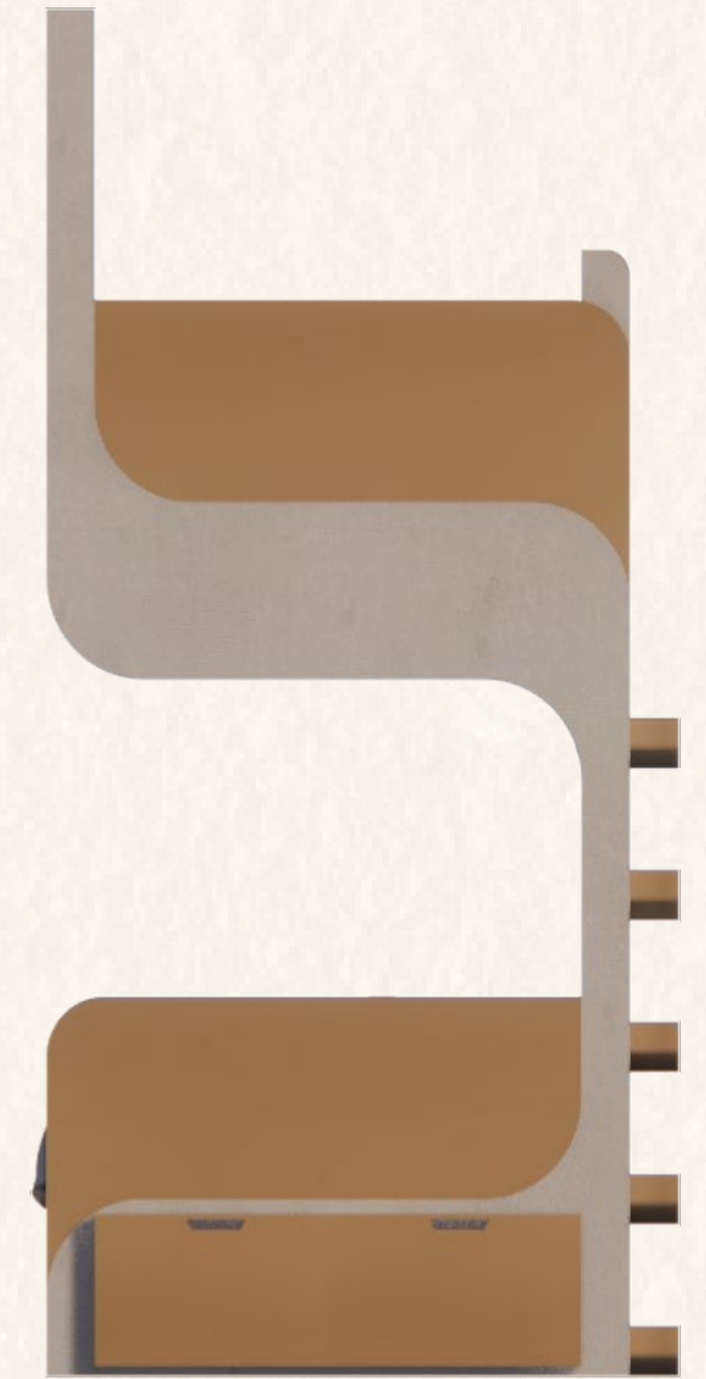
Left Elevation
SCALE 1:50



Right Elevation
SCALE 1:50

2200

INTERGRATED STORAGE



Front Elevation

Detailed Short Stay

The short stay room is designed for individuals who just need a space to rest the night or people that are on a tight budget. It can house up to eight people at a time.

Due to limited space, special bunk beds were designed for the room. The bed is enclosed at one side to ensure each user has a little bit of privacy in this tight space that is being shared with many other. It also has its own build-in storage space for the user's personal belongings.

In the center of the room, there is a shared raised platform where the users can come together and hangout.