

FUTURE HOSTEL

WOMEN-ONLY HOSTEL

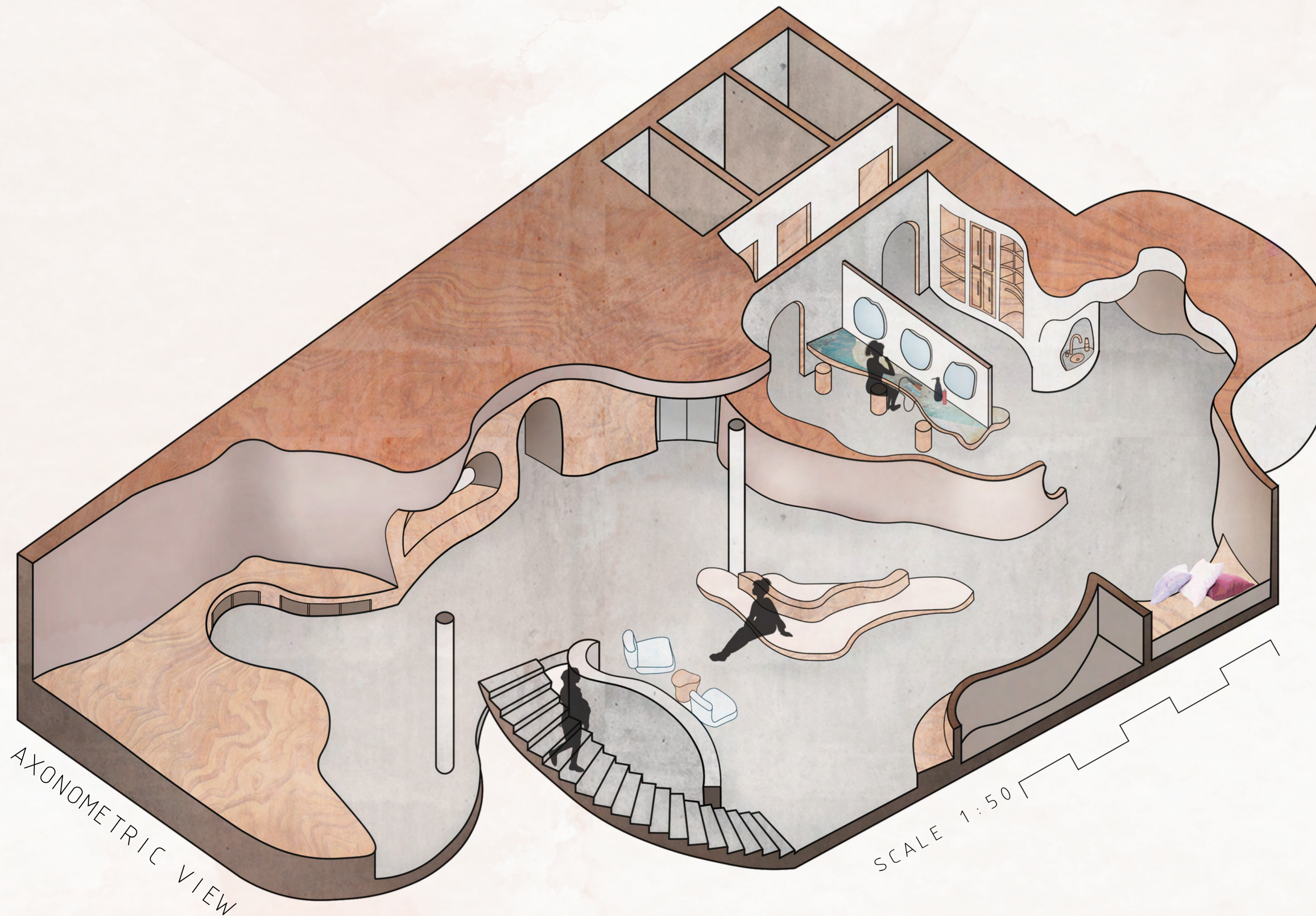
INTRODUCTION:

Within the past decade, the declining high street has become an attraction for anti-social behaviour within the UK. In addition to a rise in drinking culture urban planners, Government and organisations are becoming ever more conscious to make streets safer for women. Future Hostel serves as a design intervention for harm first and foremost; To allow women to feel comfortable on nights out drinking, or to provide a more sociable environment for groups and individual women, without potential unwanted behaviour from men.

DESCRIPTION:

The second Foyer; This space is the check-in to the Hostel, this can be used as a third space much like the the ground floor.

The space also showcases a shared vanity space, intended for guests to get ready for nights out or in the mornings together. The ceiling elevation is purposely lowered to encourage an intimate feeling.



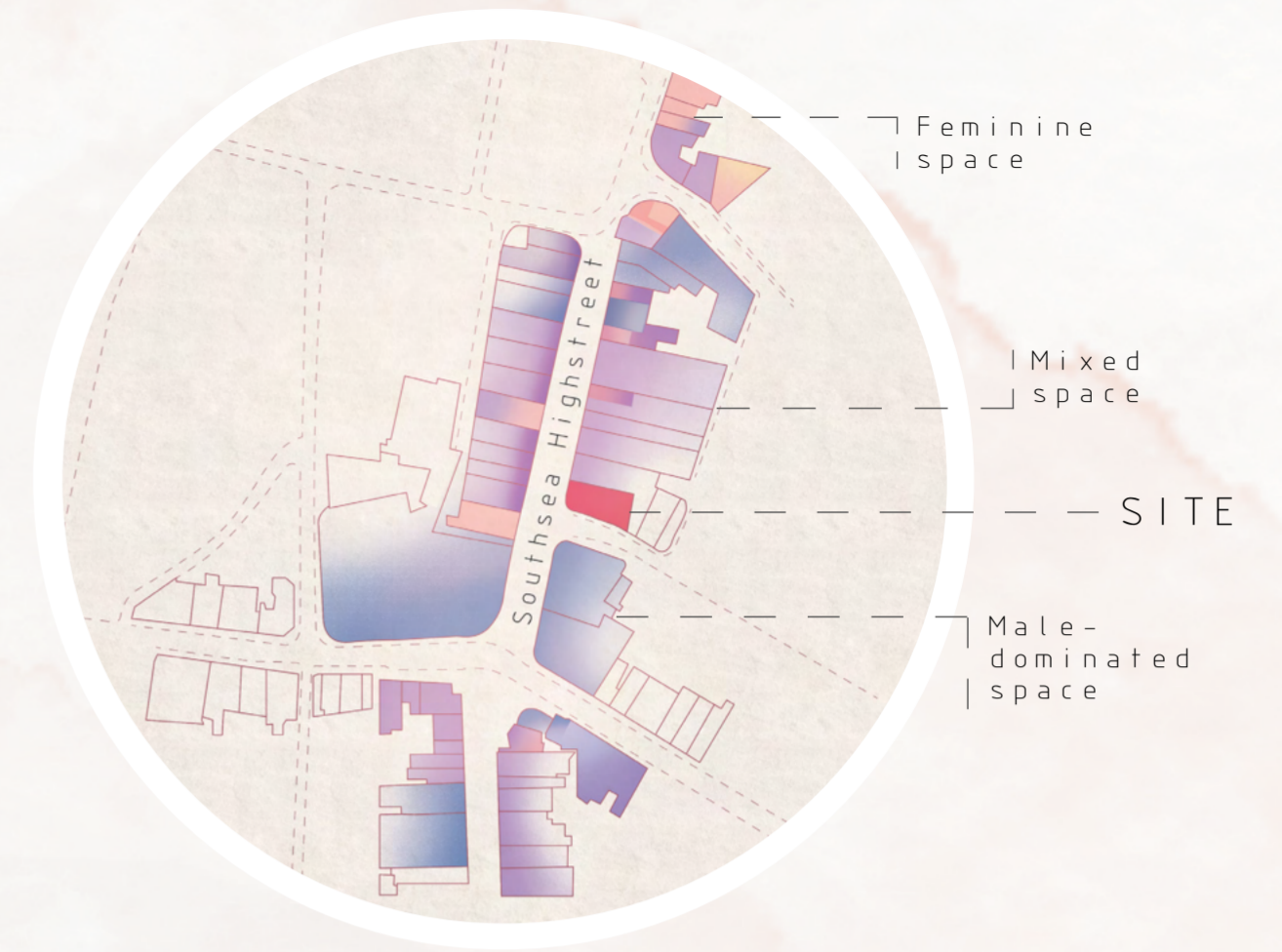
AXONOMETRIC VIEW

SCALE 1:50

THE HIGH STREET

Looking onto the high street we can see the change in how the space is gendered. Looking at the brands and kinds of shops that line the high street, we see there is a blend between genders and a fair amount could be considered feminine space. However, as the sun sets this is no longer the case and safety is pulled in to question.

Although the cause of harassment and assault can be attributed to many factors, within this context, the close proximity of clubs and pubs was the driving force for Future Hostel's design intervention.



AIMS

- Creating a safe space for women.
- Encouraging female solo travelling, by providing a safe space.
- Increasing consciousness among locals and visitors.
- Encourage safe drinking practices.

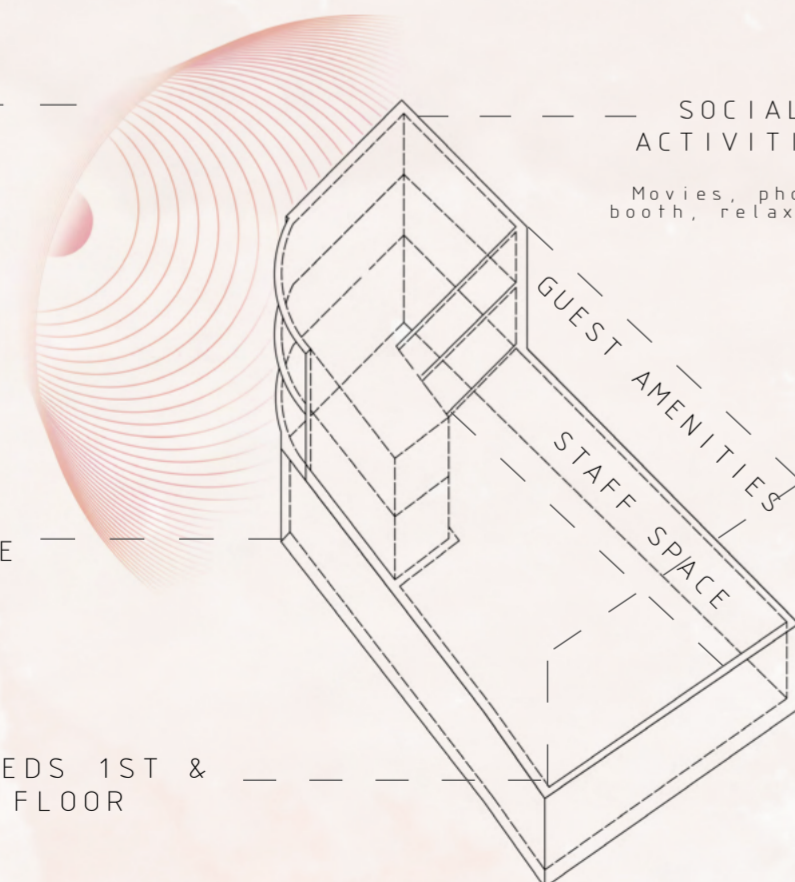
NIGHT LIFE

NOISE FROM HIGHSTREET

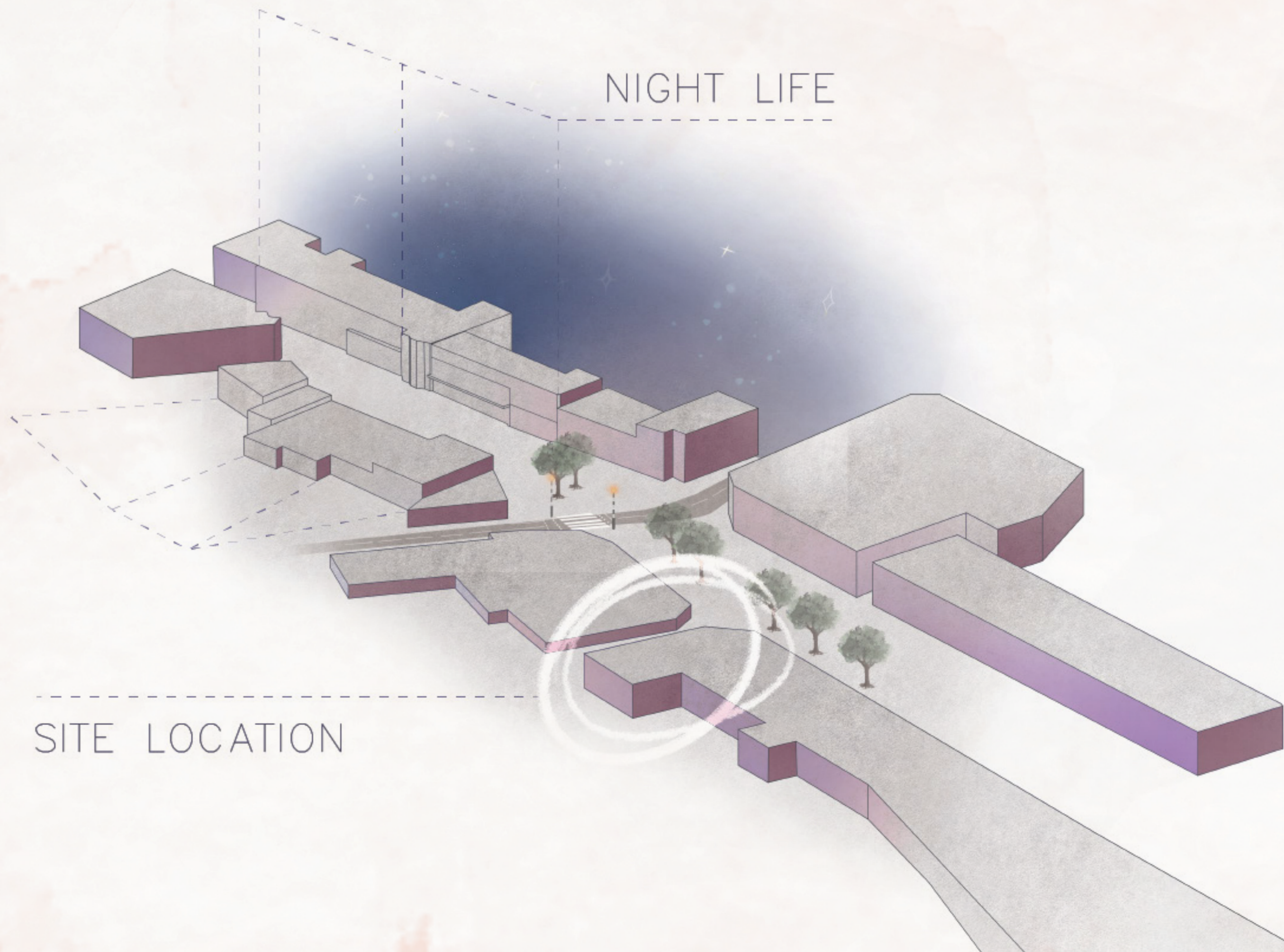
SOCIAL ACTIVITIES
Movies, photo-booth, relaxation

PUBLIC, CAFE AND FOYER SPACE
Working space

GUEST BEDS 1ST & 2ND FLOOR

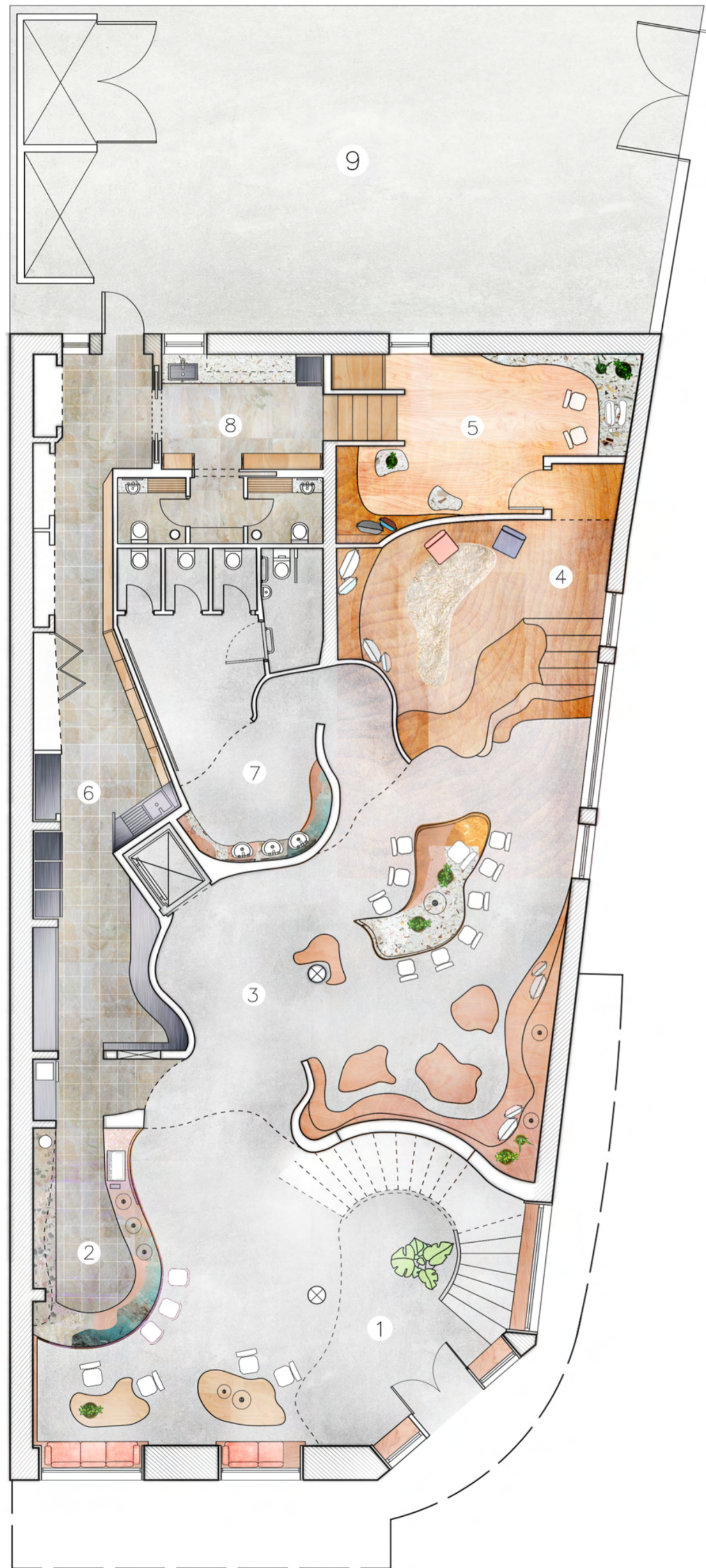


SITE LOCATION



FLOORPLAN LEGEND

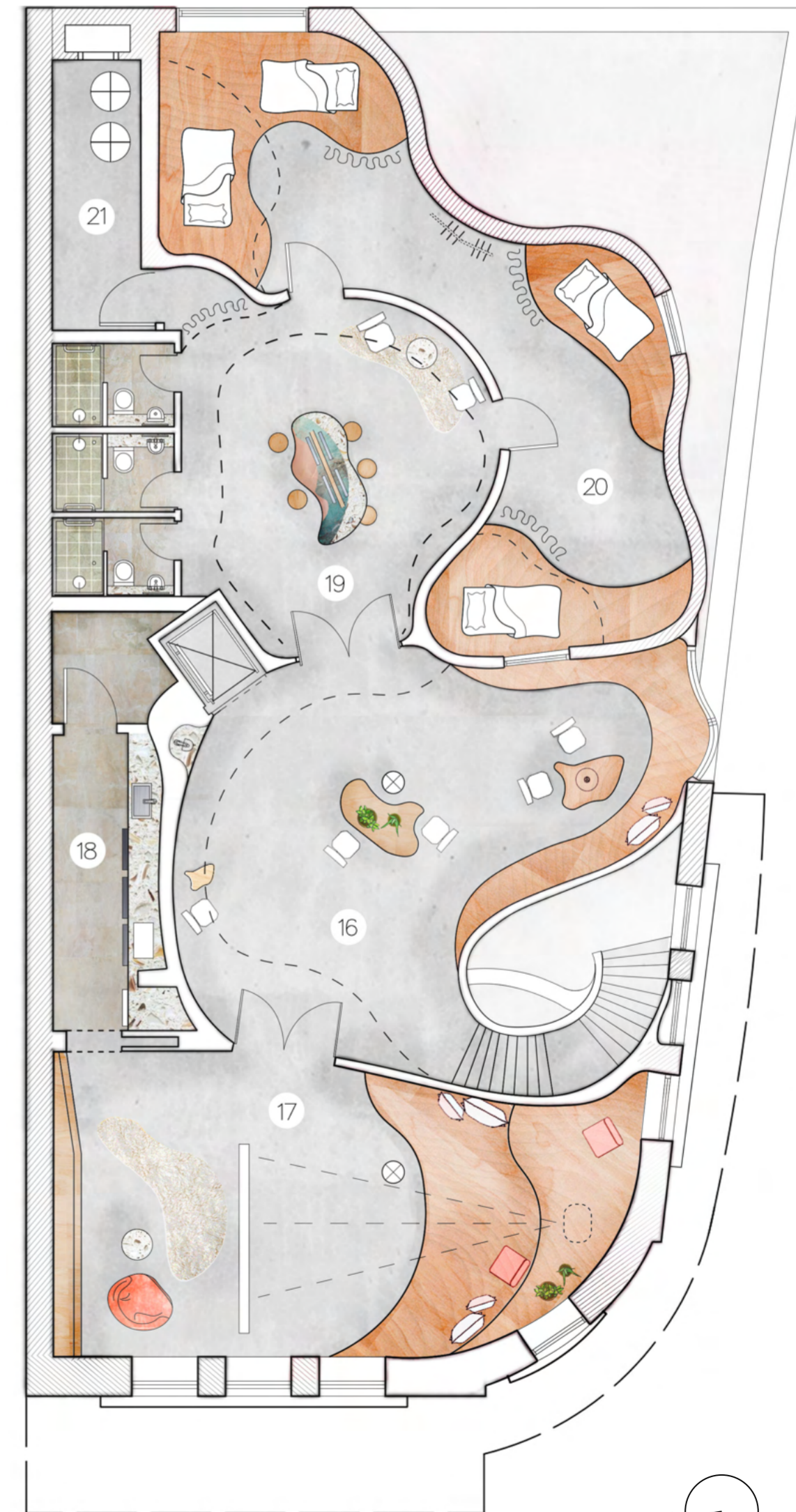
- 1. Entry foyer, atrium and cafe
- 2. Cocktail and cafe bar
- 3. Cafe seating and Marble tabletop
- 4. Stadium and working space
- 5. Staff office
- 6. Cafe Kitchen
- 7. Cafe toilets
- 8. Staff kitchen and changing rooms
- 9. Bin yard
- 10. Stadium seating
- 11. Check-in to hostel and foyer
- 12. washing machines and storage
- 13. Shared dressing room, leading to shower and bathrooms. (includes water fountain)
- 14. Shared bedroom (capacity, 5 guests)
- 15. Accessible bedroom and bathrooms
- 16. Working space for guests, includes water fountain
- 17. Movie and hang out room
- 18. Kitchen and storage
- 19. Shared dressing room
- 20. Shared bedroom (capacity 7 guests)
- 21. Boiler room (air source heating and water tanks)



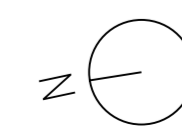
Ground Floor



First Floor

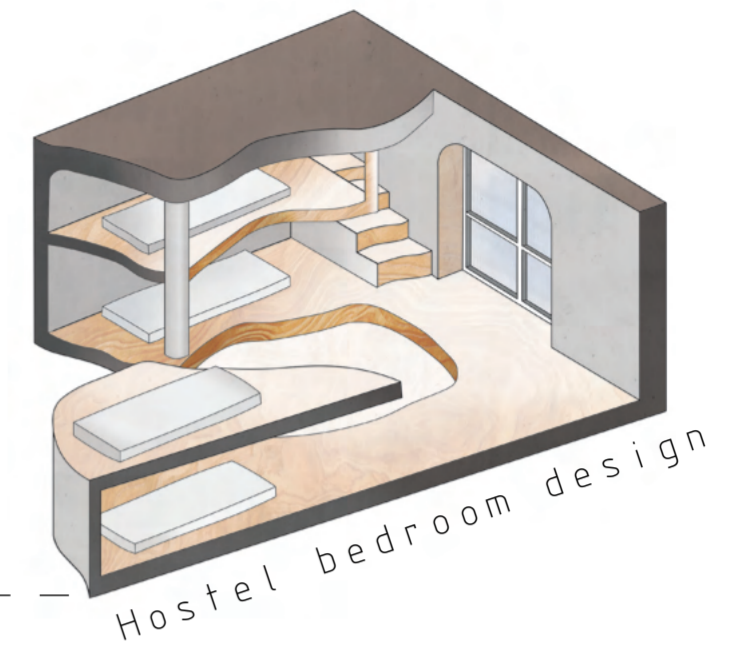


Second Floor



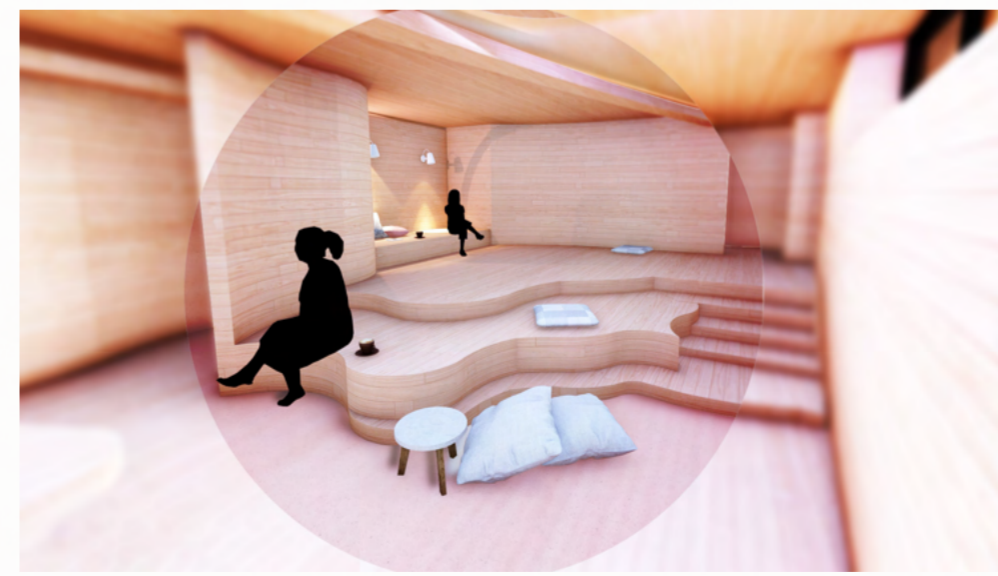
SCALE 1:100

SECTION A-A



SCALE 1:100

PERSPECTIVE DRAWING



ABOUT THE SPACE

The design of the hostel primarily focuses on feelings of safety. Layers and thresholds change throughout to create intimate space. As you enter the space you are greeted by 2 different types of seating; The Terrazzo collage table which centres the room and the Stadium, which is intended to provide the user with a sense of ownership and agency, as you have the option to move cushions, seating and coffee tables around and this entire concept is echoed throughout each floor.

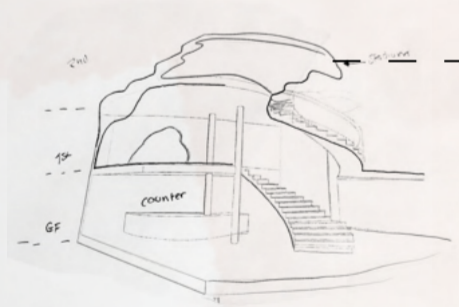
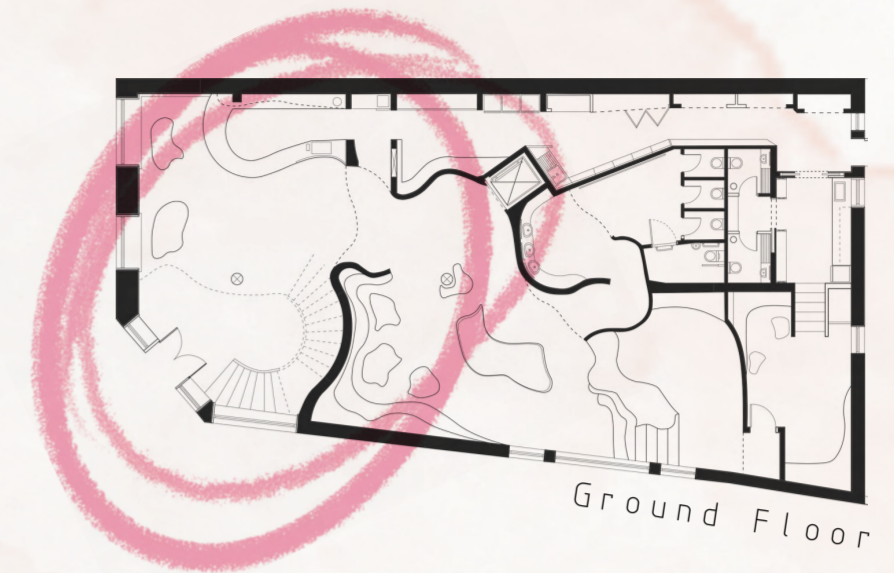
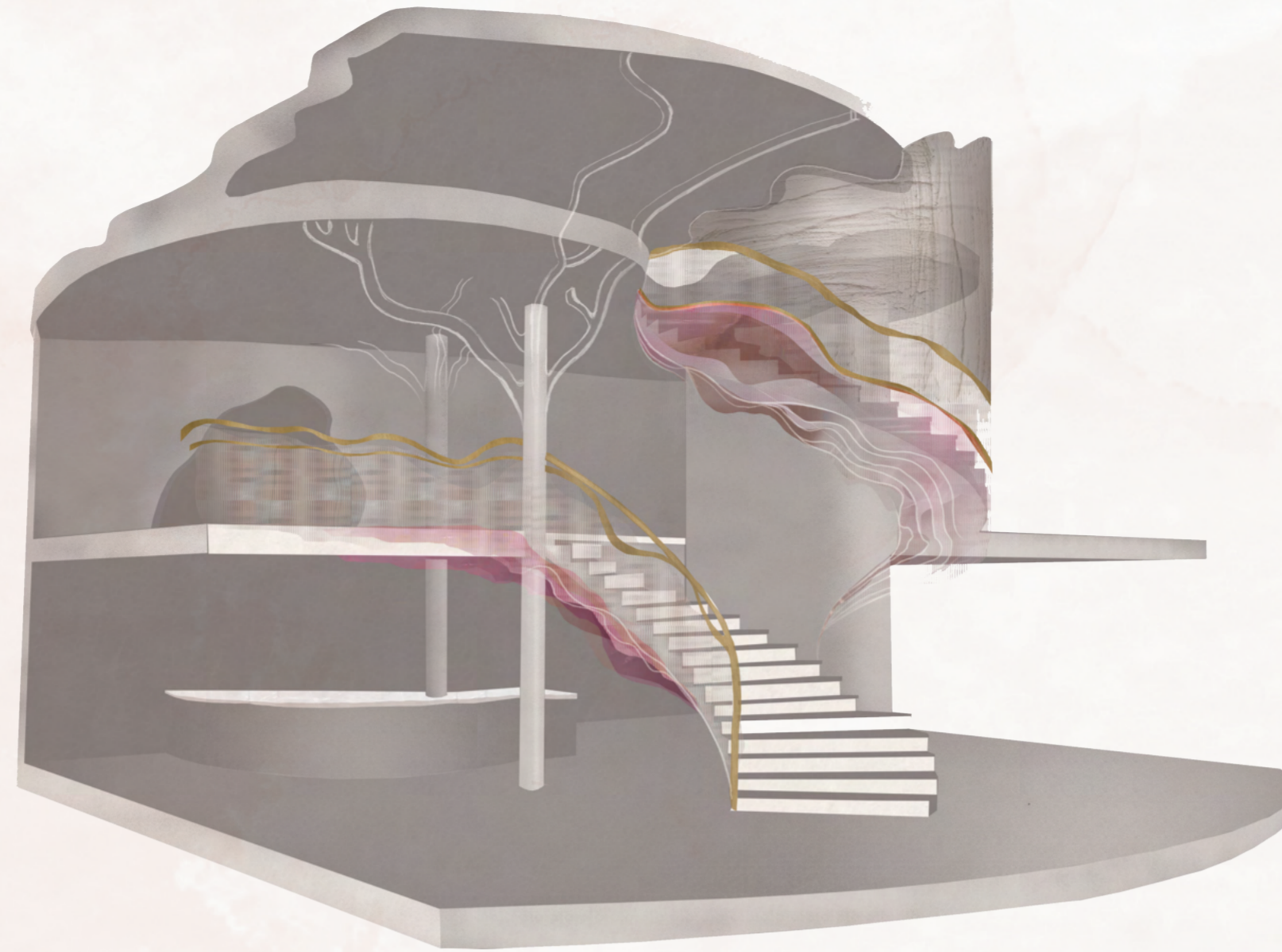
The bedroom design also fulfills the same sentiment, except curtains can be pulled to for privacy and valuables locked away within the bespoke plywood frame storage.

FIRST FLOOR FOYER

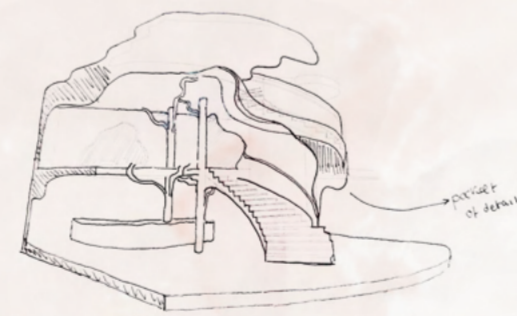
DESIGN ITERATION

The first step in my design methodology was to establish an entrance. The foyer is commonly used in hotels and hotels; however, I needed the main foyer to serve 2 functions: A café open to the public and the hostel entrance, both needed to be apparent to the user even without the use of signage. In designing an atrium and placing a secondary foyer for the hostel on the 1st floor I have married the two needs, in addition to creating an intimate space for guests away from the café.

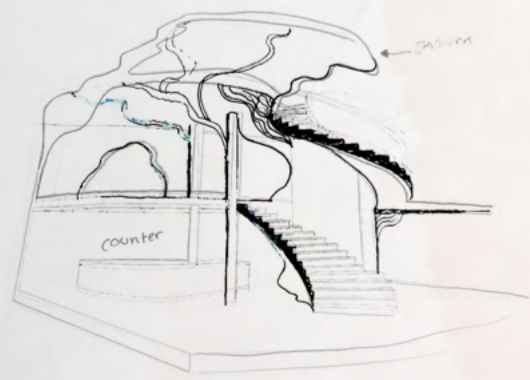
You can see further design iterations, where I have explored potentials of the café and foyer above. It was important to establish visual language, material and other features such as the staircase and column designs, which informed the rest of the project.



Established the location of the bar. A good balance of concepts. Has an alcove, a main design precedent.



COLUMN AND ATRIUM DESIGN SKETCHES



Tree and mushroom-like which strays too far from the concept and is too complex for a small space

