

A Cup of Wilderness

CELEBRATING WORLDWIDE TEA CULTURES

Introduction

The project 'A Cup of Wilderness' is dedicated to creating a space that honors worldwide tea cultures, promoting cultural and social interconnectedness, and fostering a stronger connection between people and nature within an urbanized city. Boathouse 4 will undergo a renovation designed to serve three categories: a tea house, a botanical garden, and a co-working space, with each component complementing the others.

The design proposal emphasizes the importance of fostering cultural connectedness while honoring the British love for tea. At the forefront of the project, the tea houses will offer an immersive experience for visitors to explore diverse tea traditions from around the world. By offering an extensive selection of tea blends sourced globally, the tea house becomes a hub for cultural exchange, enabling visitors to connect with diverse traditions and engage in meaningful conversations. The botanical garden acts as a perfect complement to the tea house, showcasing plants and other cultural elements from different corners of the world. The co-working areas serve as a meeting point for individuals from various backgrounds to collaborate, exchange ideas, and work together. By integrating the tea house, botanical garden, and co-working space, 'A Cup of Wilderness' highlights the importance of cultural connectedness.

By inviting visitors to explore different tea traditions, providing an engaging and collaborative environment, the project encourages dialogue, understanding, and appreciation for diverse cultures. This emphasis on cultural connectedness contributes to a stronger sense of community and a deeper understanding of our shared human heritage.

Tea Houses

Indoor Garden

Co-Working spaces

Project Brief

The project features seven distinct and unique small tea houses, each representing a different culture and providing a diverse and immersive tea experience for guests. The tea houses include a British, Chinese, Japanese, Indian, Turkish, Moroccan, and Greek tea house. Through this project, guests can explore and learn about the different tea customs and blends from around the world, creating a multisensory cultural experience. Apart from the different tea houses, housing different tea cultures, the building will also include an interactive experience where dry tea leaves and flowers will be exposed for people to smell, feel and contemplate, allowing them to learn more about tea plants.

Acting as a living museum, the Botanical Garden takes guests on a historical and cultural journey of tea through the exhibition of a variety of exotic plants, unique herbal teas and other cultural artifacts. Along with all the flora, waterfalls, koi fish ponds, sculptures and hidden paths will convey an outstanding mystical atmosphere giving visitors an immersive experience through the history of tea. Tea plantations will also be cultivated in three climate-controlled biodomes located outside the building by the sea, providing guests with a unique and distinctive tea-growing experience. Apart from that, the garden aims to bring nature closer to people in the urbanized Portsmouth city, creating a place where people can relax and recharge from daily routines, have a walk in nature while remaining indoors on rainy days or read a book in between nature.

The co-working space will be intelligently integrated into the building, encouraging collaboration and productivity. With modern amenities and flexible work areas, it will serve as a hub for professionals seeking an inspiring and dynamic environment to work, network, and exchange ideas.



Tea Houses

Indoor Garden

Co-Working spaces

Nature provides a peaceful and inspiring atmosphere to the space, creating a good environment for people to enjoy a cup of tea with their loved ones.

People can enjoy a cup of tea while reading a book or have a quick sandwich and coffee in their study/working break.

Being in contact with nature can improve cognitive function and creativity, so this is an ideal environment for people to read, work or study.

A place that fosters..

... social connections



cultural connections...



... human-nature connections



Concept behind the design

WORLDWIDE TEA CULTURES

The space will pay homage to tea cultures from around the world, celebrating countries with the most prominent traditions. Oriental countries like China, Japan, and India will be honored for their rich tea cultures, showcasing their unique brewing methods, tea ceremonies, and diverse tea varieties. Turkey and Morocco, known for their tea cultures steeped in hospitality, will be featured, highlighting the art of serving tea and the social significance it holds in these regions. Lastly, the British tea culture will take its place, with its iconic traditions such as afternoon tea and the beloved "cuppa," showcasing the importance of tea in British daily life. This space will be a tribute to the global appreciation and diverse customs surrounding the wonderful world of tea.

CHINA



Chinese Cha Dao

JAPAN



Japanese tea ceremony (macha powder)

INDIA



Indian Chai street sell

MOROCCO



Moroccan Magreb mint tea

TURKEY



Turkish apple and cinnamon tea

UK



British afternoon tea

Scheme development

CONCEPT SCHEME MODEL



Source of inspiration behind the design



Tea Ceramics

The design concept of my project drew inspiration from ceramic teaware, serving as a profound source of creative influence. The historical and cultural importance that ceramics hold in tea culture deeply resonated with me, compelling me to anchor my design concept around this timeless art form. By paying homage to these cherished traditions, I sought to infuse my project with the essence of the rich legacy of tea ceramics, embracing their elegance, craftsmanship, and symbolism as guiding principles for the development of the overall design.

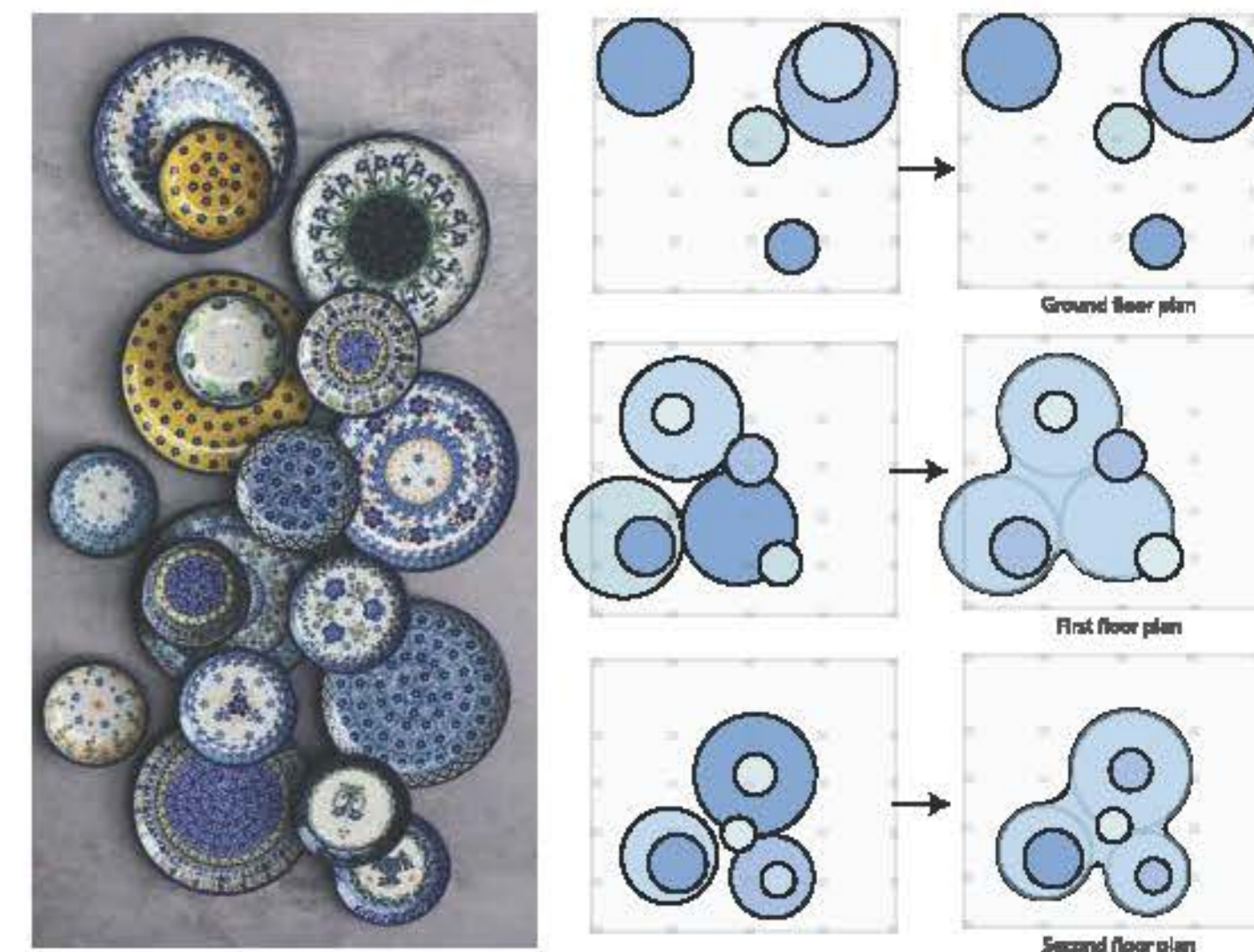
Tea ceramics have played a significant role in tea culture for centuries, with origins dating back to ancient China. Tea drinking became popular in China during the Tang Dynasty (618-907 AD), and it was during this time that tea ceramics began to emerge as a distinct art form. Today, ceramics continue to be an important part of tea culture around the world, with artisans and designers continuing to innovate and push the boundaries of this ancient art form.

Ceramic teaware have inspired my project, not just in terms of the overall design concept, where the plates influenced the floor plans and the tea mugs shaped the form of the tea houses, but also in the selection of traditional patterned tiles for the interior cladding of the tea houses.

Scheme development

FLOOR PLANS

I creatively experimented with ceramic plates as a wellspring of inspiration to conceive the plans

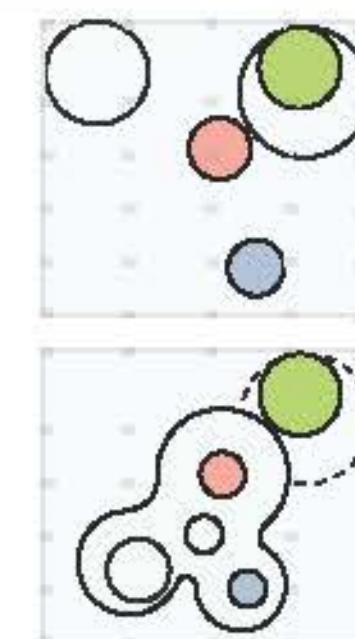
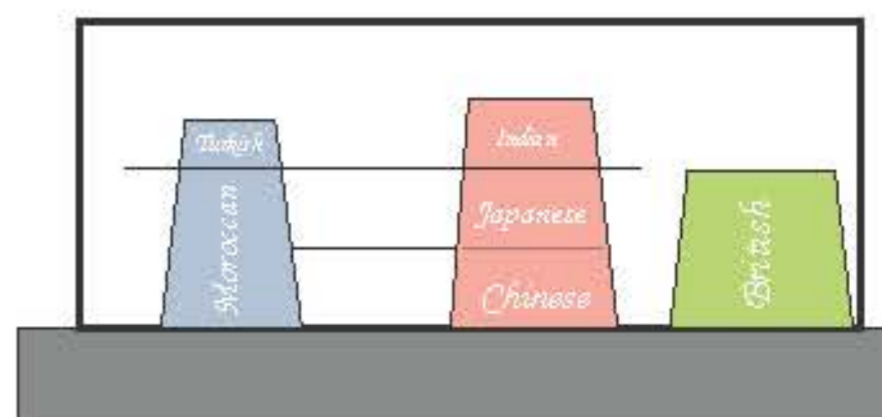


TEA HOUSES GEOMETRY

These conical structures in which the tea houses are situated draw inspiration from inverted tea cups, creating a unique architectural design. On each level, there will be a distinct tea house representing a different country, showcasing its own unique style and ambiance

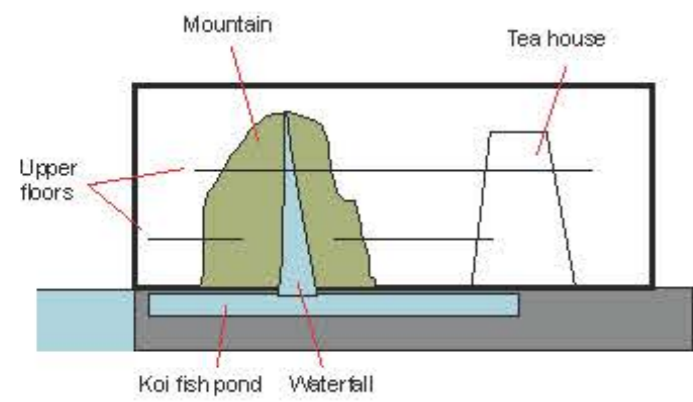


■ Mediterranean countries tea houses
■ Oriental countries tea houses
■ British tea house

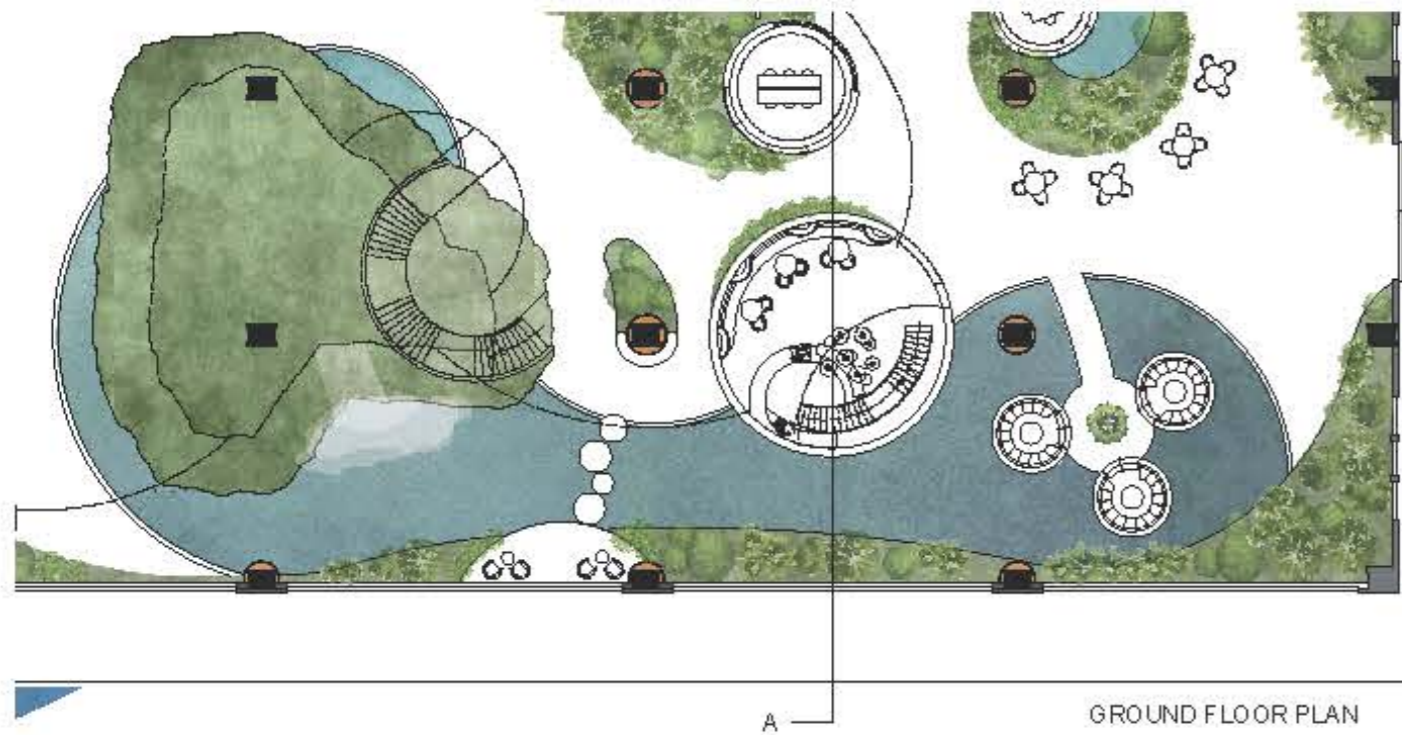


Scheme development

'MOUNTAIN'



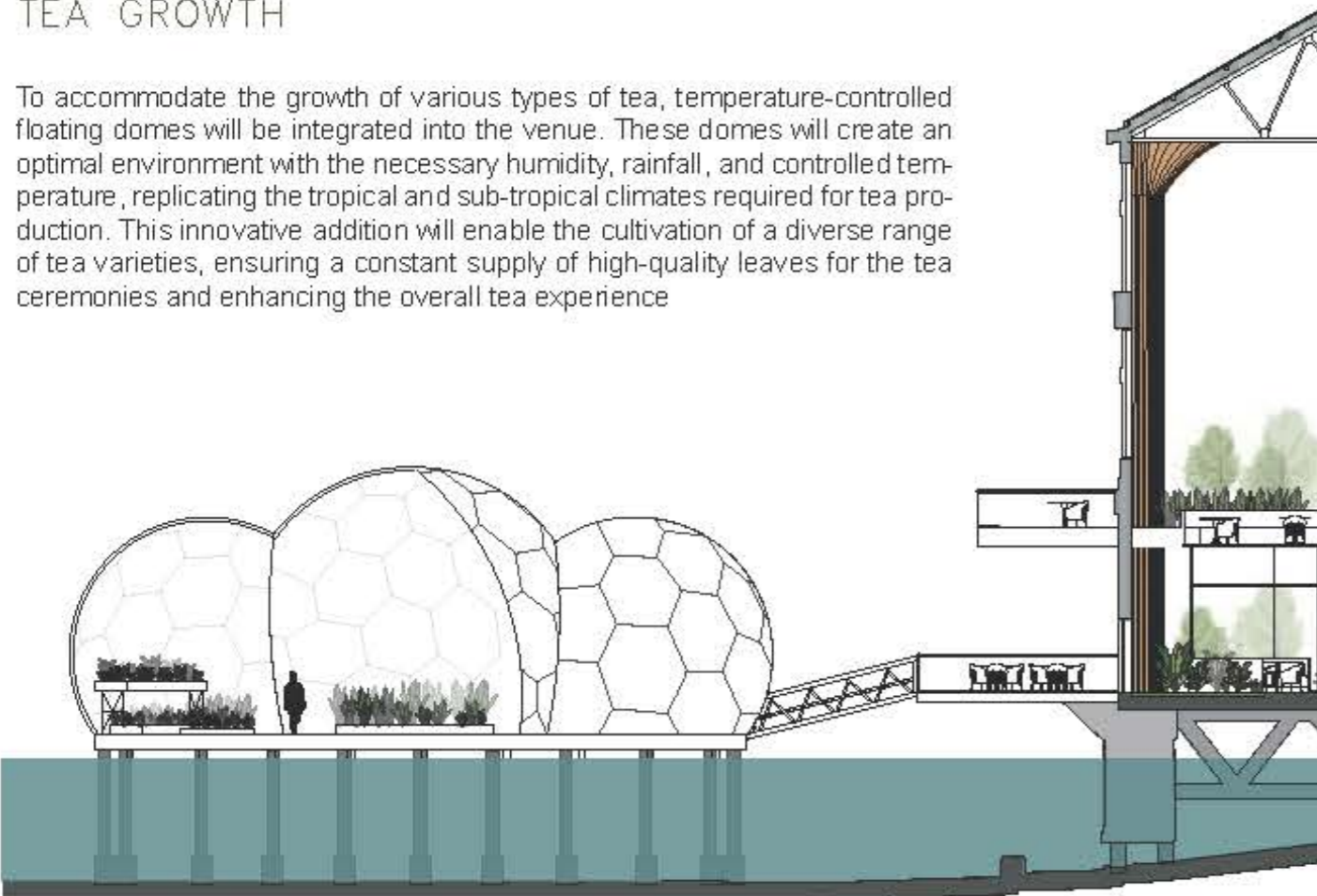
The image on the right shows a "mountain" placed in the Cloud Forest in Gardens By the Bay in Singapore. It replicates the tropical mountain regions in South-East Asia, Central and South America. Visitors can walk through the mountain via a circular path which crosses underneath waterfall multiple times. Taking the Cloud Mountain as inspiration, I will include a similar "mountain" as part of the botanical garden, with waterfalls going into the tidal canal, which will be transformed into a freshwater koi fish pond.



Biodomes

TEA GROWTH

To accommodate the growth of various types of tea, temperature-controlled floating domes will be integrated into the venue. These domes will create an optimal environment with the necessary humidity, rainfall, and controlled temperature, replicating the tropical and sub-tropical climates required for tea production. This innovative addition will enable the cultivation of a diverse range of tea varieties, ensuring a constant supply of high-quality leaves for the tea ceremonies and enhancing the overall tea experience.



Tea Houses design

PATTERNED TILES



Making contrast with the neutral exterior, as we enter the conical-shaped tea houses, the vivid interiors surprise us with captivating patterned tiles. Each tile pattern carefully pays homage to traditional motifs from various countries, combining them with a modern approach.



Tiles as a cultural heritage

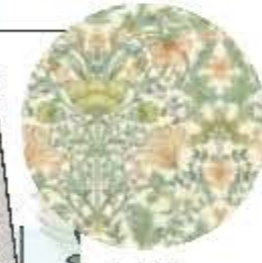
The use of tiles to represent different countries' cultures has a profound impact on the preservation, celebration, and promotion of their artistic traditions, architectural identity, and historical significance. As functional and decorative elements in buildings, tiles have shaped architectural styles and become iconic symbols of cultural heritage. The intricate patterns and motifs on tiles convey cultural narratives, religious symbolism, and regional influences, reflecting the artistic traditions and values of societies. They serve as tangible artifacts that preserve history, offering insights into construction techniques and daily life in the past, as well as cross-cultural influences. By providing tangible representations of a country's cultural heritage, tiles create opportunities for individuals to appreciate, engage with, and be inspired by the rich history and artistic expressions of diverse cultures around the world.



TURKEY



INDIA



UK



MOROCCO



JAPAN



CHINA



Tea Rooms

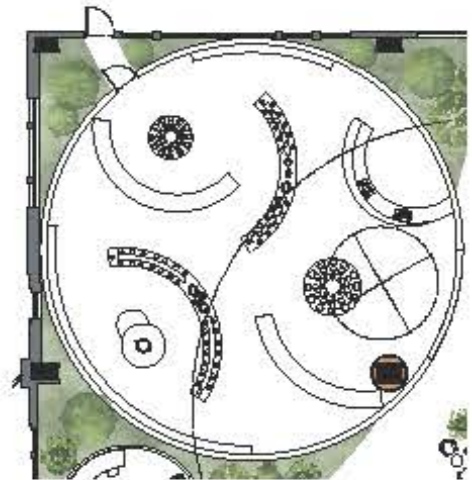
CHINESE & JAPANESE TEA CEREMONIES

Along with the Chinese and Japanese tea houses, the venue will feature individual tea rooms creating an ideal setting for visitors to immerse themselves in authentic Chinese Cha Dao and Japanese tea ceremonies. Chinese Cha Dao, also known as the Way of Tea, involves the preparation, presentation, and consumption of tea, focusing on the aesthetic appreciation of the tea itself and the beauty of the teaware, while the Japanese Tea Ceremony, or Chanoyu, is a highly ritualized and choreographed practice centered around the preparation and serving of matcha. Both cultures celebrate the art of tea with mindfulness, harmony, and cultural traditions, both taking place in rooms carefully crafted to offer an intimate and serene ambiance.



Tea store and exhibition

The building will house a tea store where visitors can not only purchase a diverse range of teas but also explore an exhibition of tea ceramics and porcelains, immersing themselves in a complete tea-centric experience. This unique showcase will offer visitors the opportunity to admire and appreciate a wide array of tea-related pottery, including teapots, cups, and other exquisite vessels. By featuring this exhibition alongside the tea store, visitors will have the chance to delve deeper into the world of tea, gaining a more comprehensive understanding and appreciation for the artistry and craftsmanship associated with tea ceramics and porcelains.



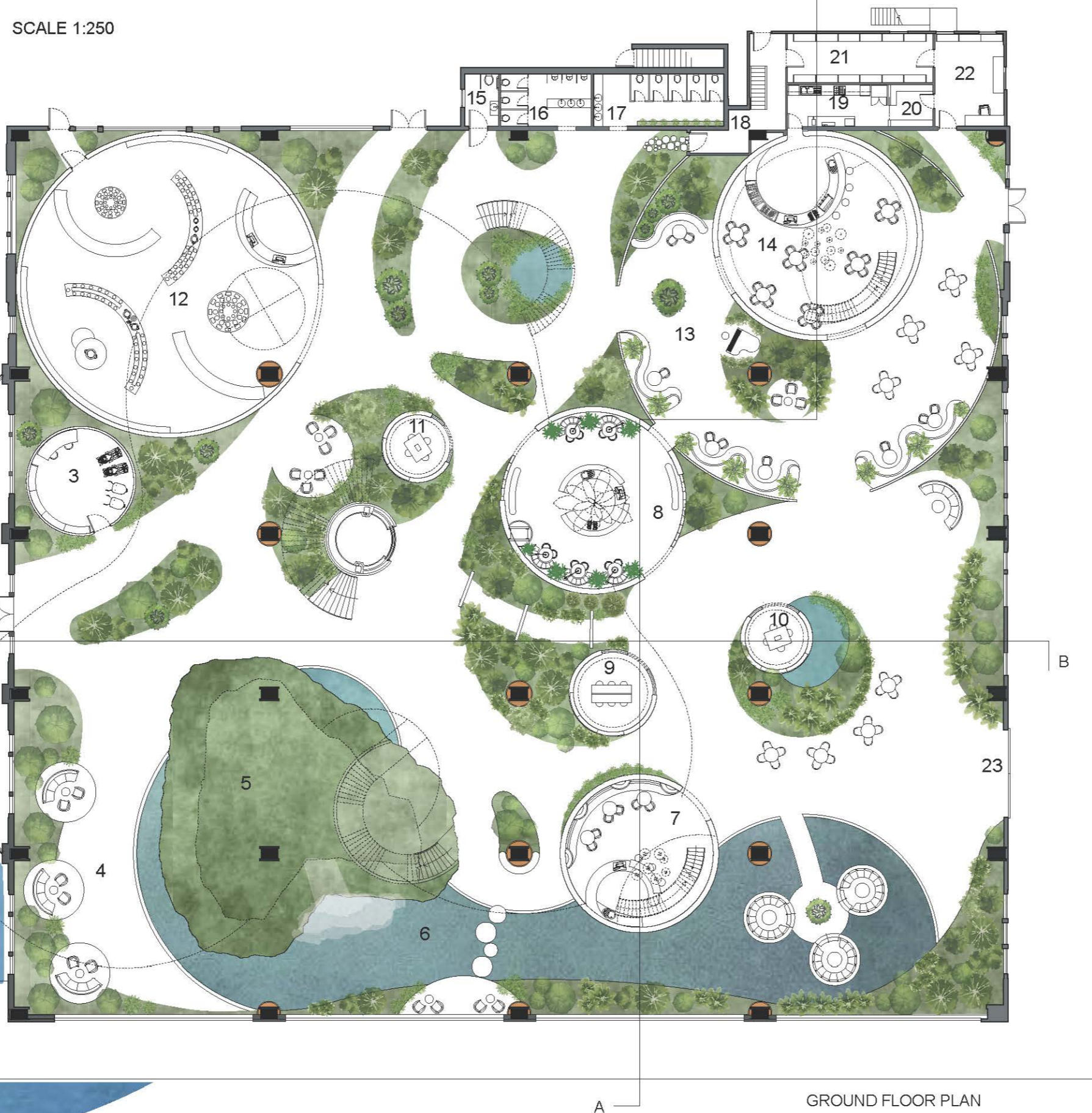
TEA SENSORY EXPERIENCE

Inside the store, a variety of dried tea leaves will be displayed, inviting visitors to explore their aromatic profiles and providing accompanying information for an immersive tea-learning experience. This setup will allow individuals to engage their senses by smelling the distinct scents of each tea variety while simultaneously educating themselves about the characteristics, origins, and brewing methods associated with each type of tea. In this way, the store will offer an interactive and informative environment where tea enthusiasts and curious individuals alike can expand their knowledge and appreciation of the diverse world of tea.



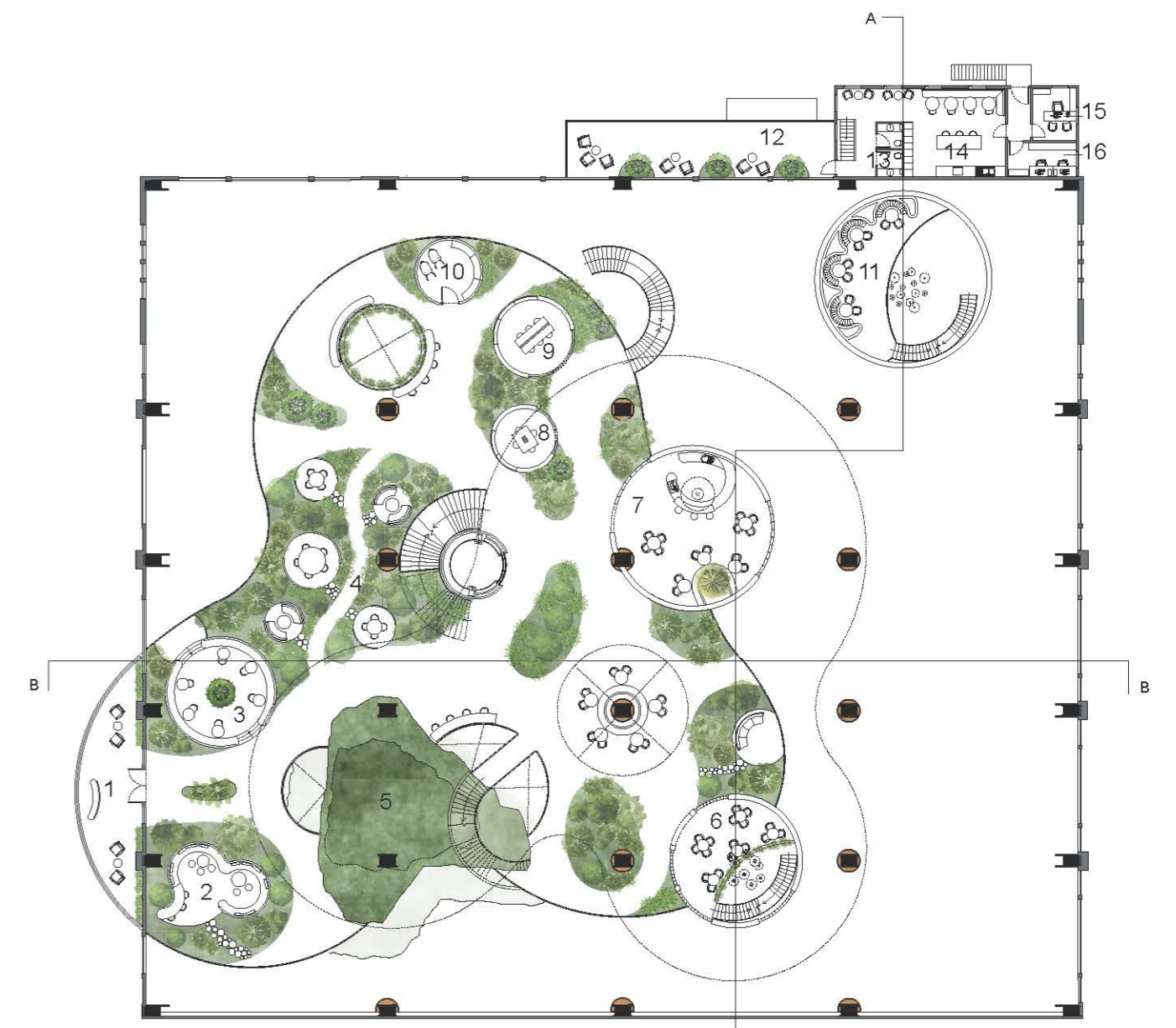
SCALE 1:250

- 1 - Biodomes
- 2 - Exterior balcony
- 3 - Gardening storage
- 4 - Co Working area
- 5 - Mountain
- 6 - Pond
- 7 - Moroccan tea house
- 8 - Chinese tea house
- 9 - Tea room
- 10 - Tea room
- 11 - Tea room



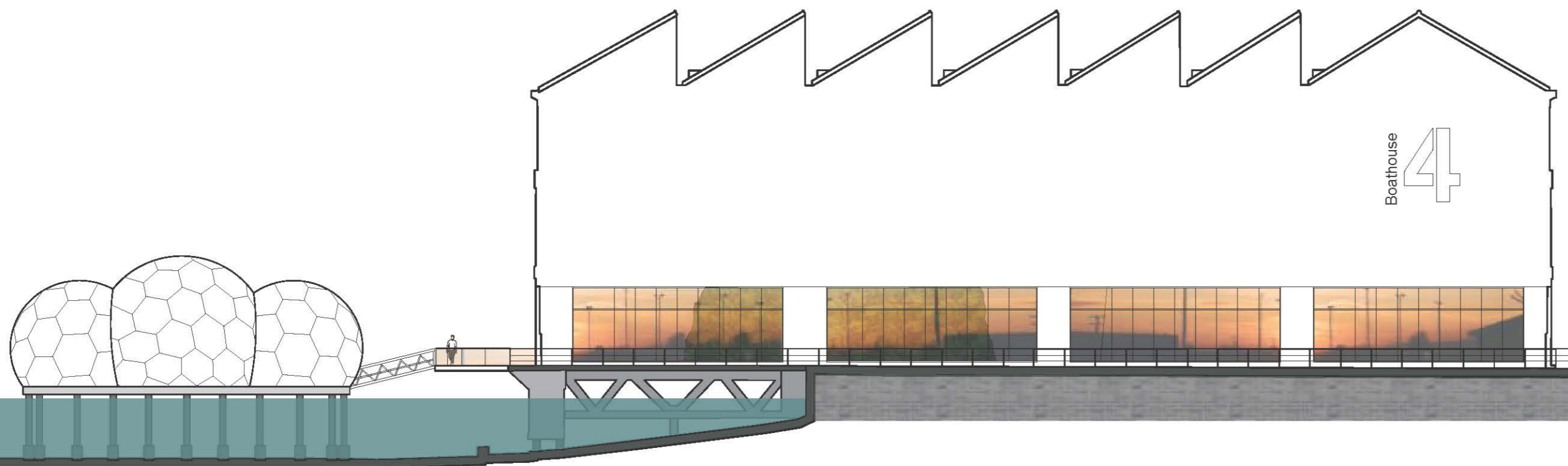
GROUND FLOOR PLAN

- 12 - Tea store and exhibition
- 13 - Seating area
- 14 - British tea house
- 15 - Disabled WC
- 16 - Male WC
- 17 - Female WC
- 18 - Utility corridor
- 19 - British tea house kitchen
- 20 - British tea house storage room
- 21 - Storage
- 22 - Office
- 23 - Main entrance

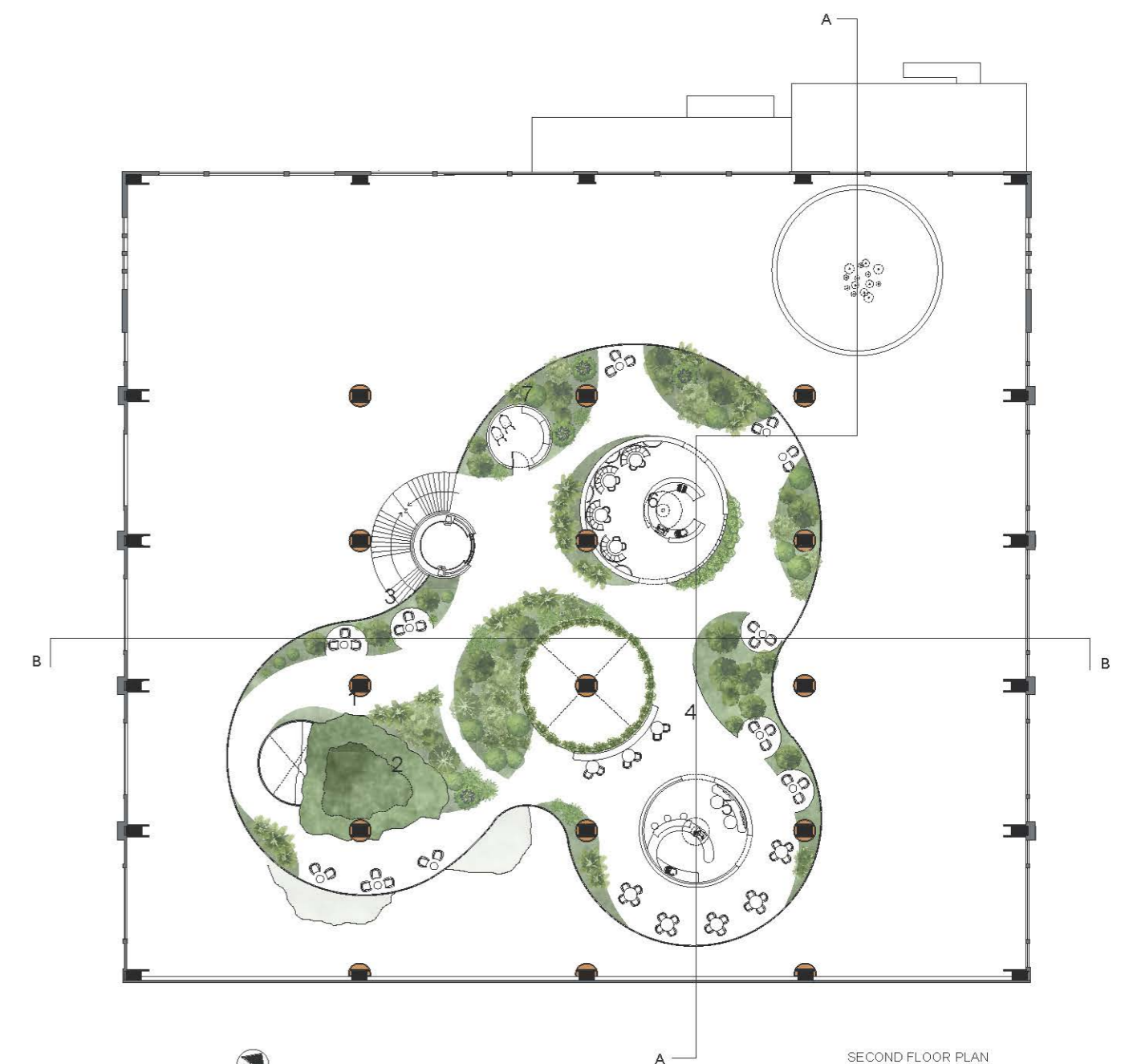


FIRST FLOOR PLAN

- 1 - Exterior balcony
- 2 - Co working areas
- 3 - Co working areas
- 4 - Co Working areas
- 5 - Mountain
- 6 - Moroccan tea house mezzanine
- 7 - Japanese tea house
- 8 - Tea room
- 9 - Tea room
- 10 - Gardening storage
- 11 - British tea house mezzanine
- 12 - Staff exterior balcony
- 13 - Staff WC's
- 14 - Staff break room
- 15 - Office



SOUTH ELEVATION

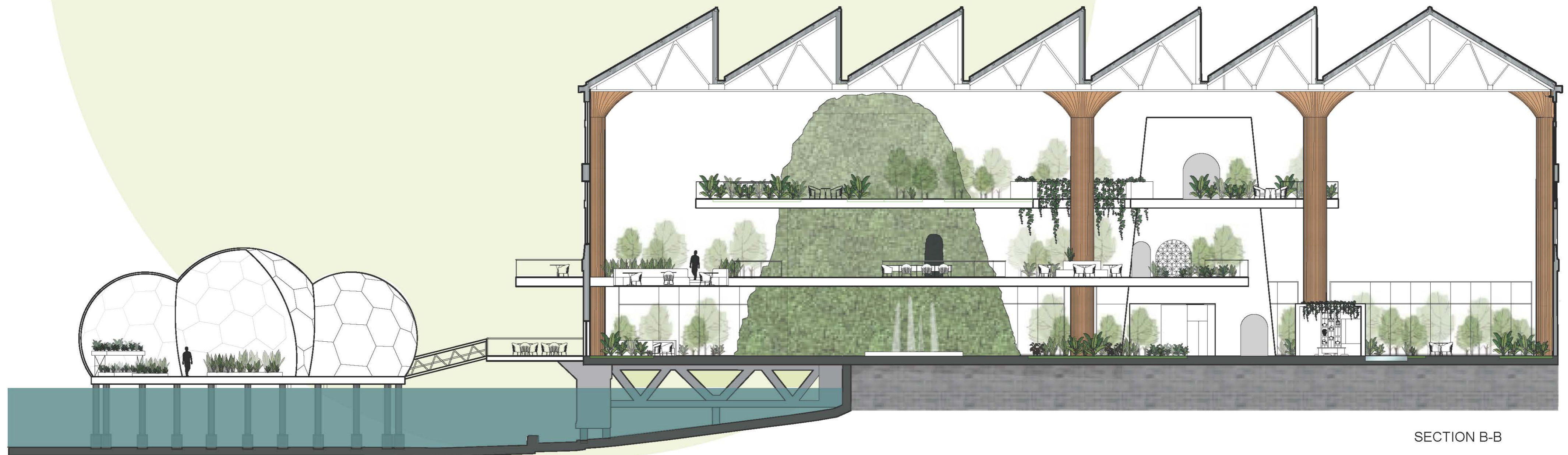


SECOND FLOOR PLAN

- 1 - Mountain
- 2 - Co working areas
- 3 - Co working areas
- 4 - Turkish tea house
- 5 - Turkish tea house seating area
- 6 - Indian tea house
- 7 - Gardening storage



SECTION A-A



SECTION B-B