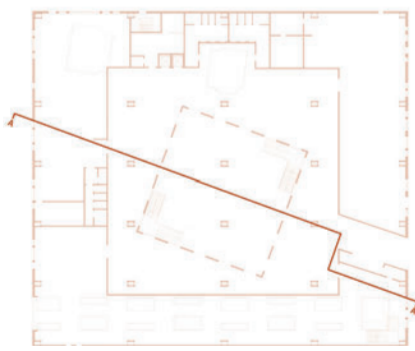


Section A-A



# Weaving Culture

*Celebration of Islamic and Arab Culture*

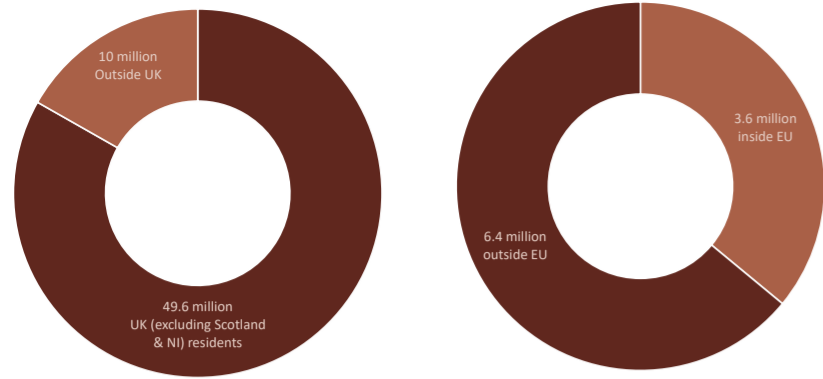


Located within Boathouse 4 in the Naval Dockyard of Portsmouth, Weaving Culture is an adaptive-reuse project that will offer local and national audiences from different cultural backgrounds a place to educate and experience Arab/Islamic culture.

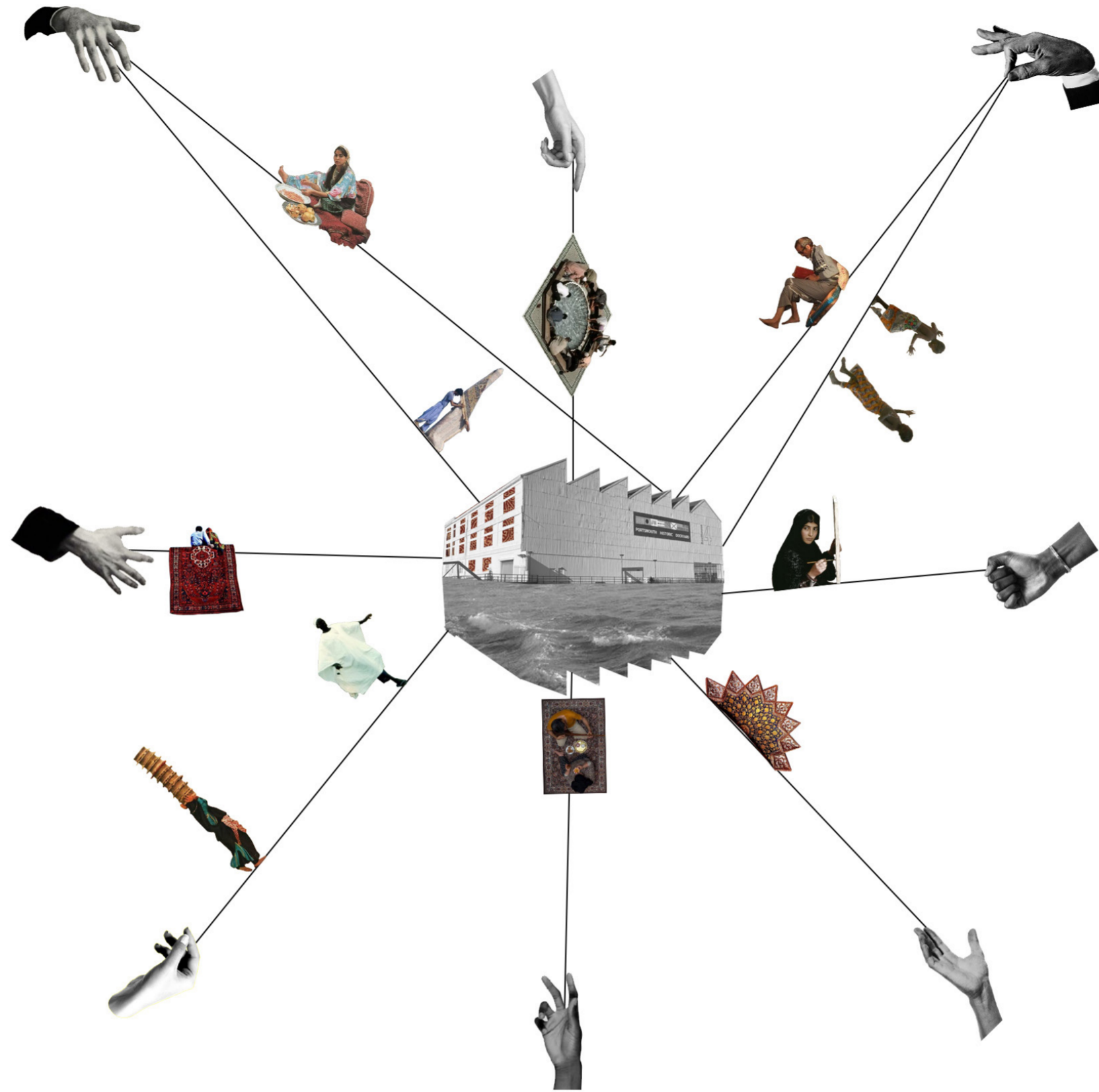
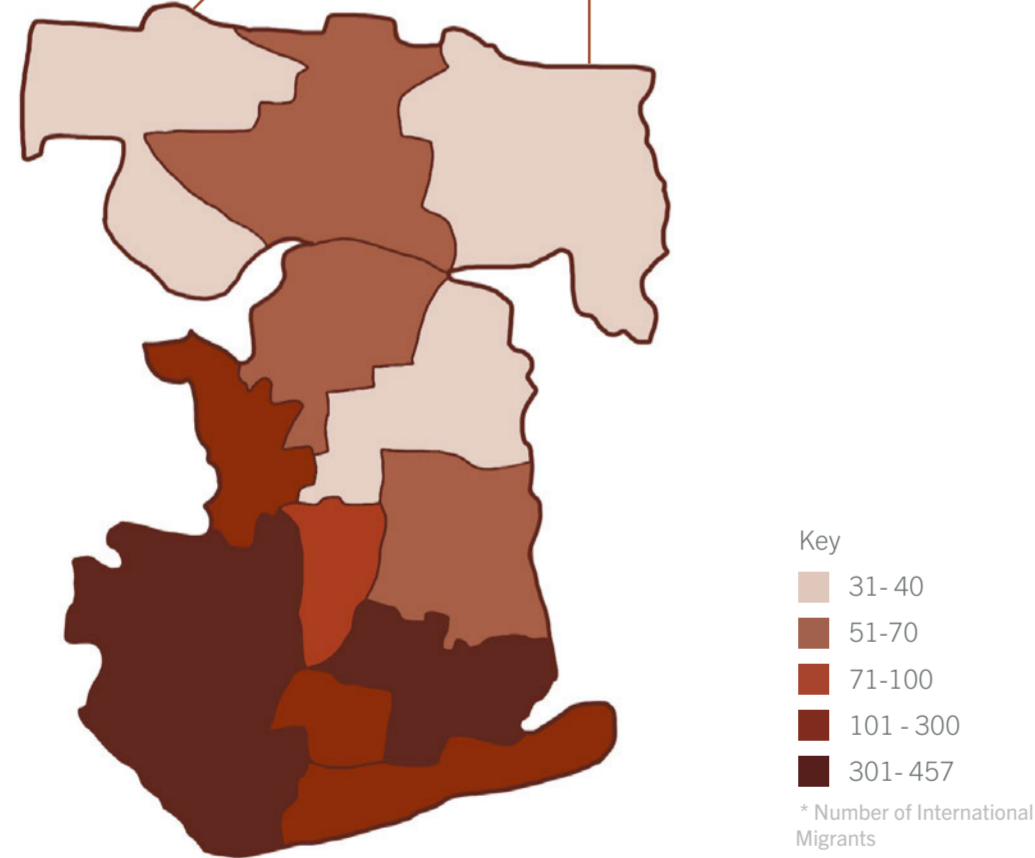
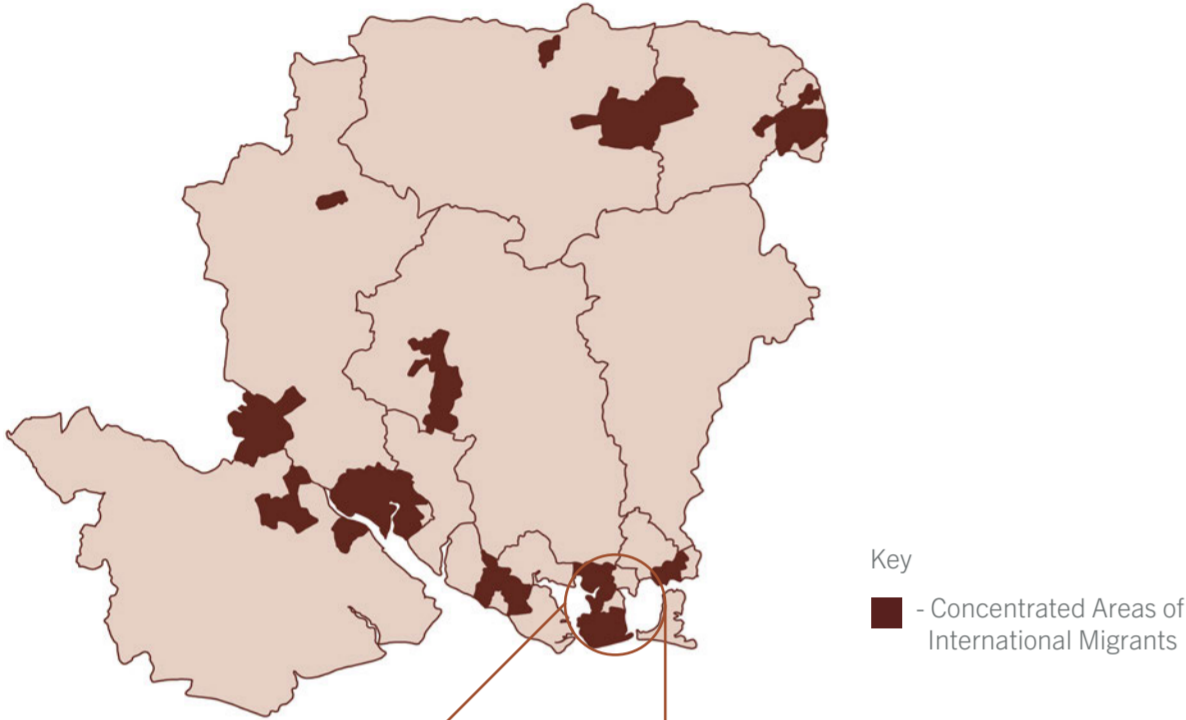
The aim is to encourage audiences to immerse themselves in new cultures and create a sense of community where everyone feels welcomed. Conflict and better opportunities bring people from all over the world to the UK, however, there are few spaces where people can celebrate their different cultures in a safe communal space that allows them to share their backgrounds.

Growing up with mixed ethnic background, I never truly felt a sense of belonging in my Iraqi heritage due to conflict taken place. This became the driving force to create a space where Islamic and Arab culture can be celebrated as well as protected for those have been displaced when migrating to the UK.

## Migrants in the UK



## International Migrants in Hampshire & Portsmouth



Collage of Weaving Culture



### Samira, 35 & Abdul, 7

Samira was born in Syria and moved to UK a decade ago for a better career path in literature. However, Samira misses her home country but is unable to return with her son Abdul due to the on-going conflict. She wishes for a space where she can see the celebration of their culture with her son as well as have a socialising area where she can meet other people with a similar background. Abdul also loves to be creative and learn new things, particularly when it comes to his heritage.

### Hannah, 20

Born and raised in the UK, Hannah has never fully experienced other cultures. On her gap year she decided to go travelling abroad and realised she has been isolated in experiencing different cultures. Now learning Art History she would love to be able to have a space where she can easily develop her knowledge on various cultures.



### Ahmed, 73

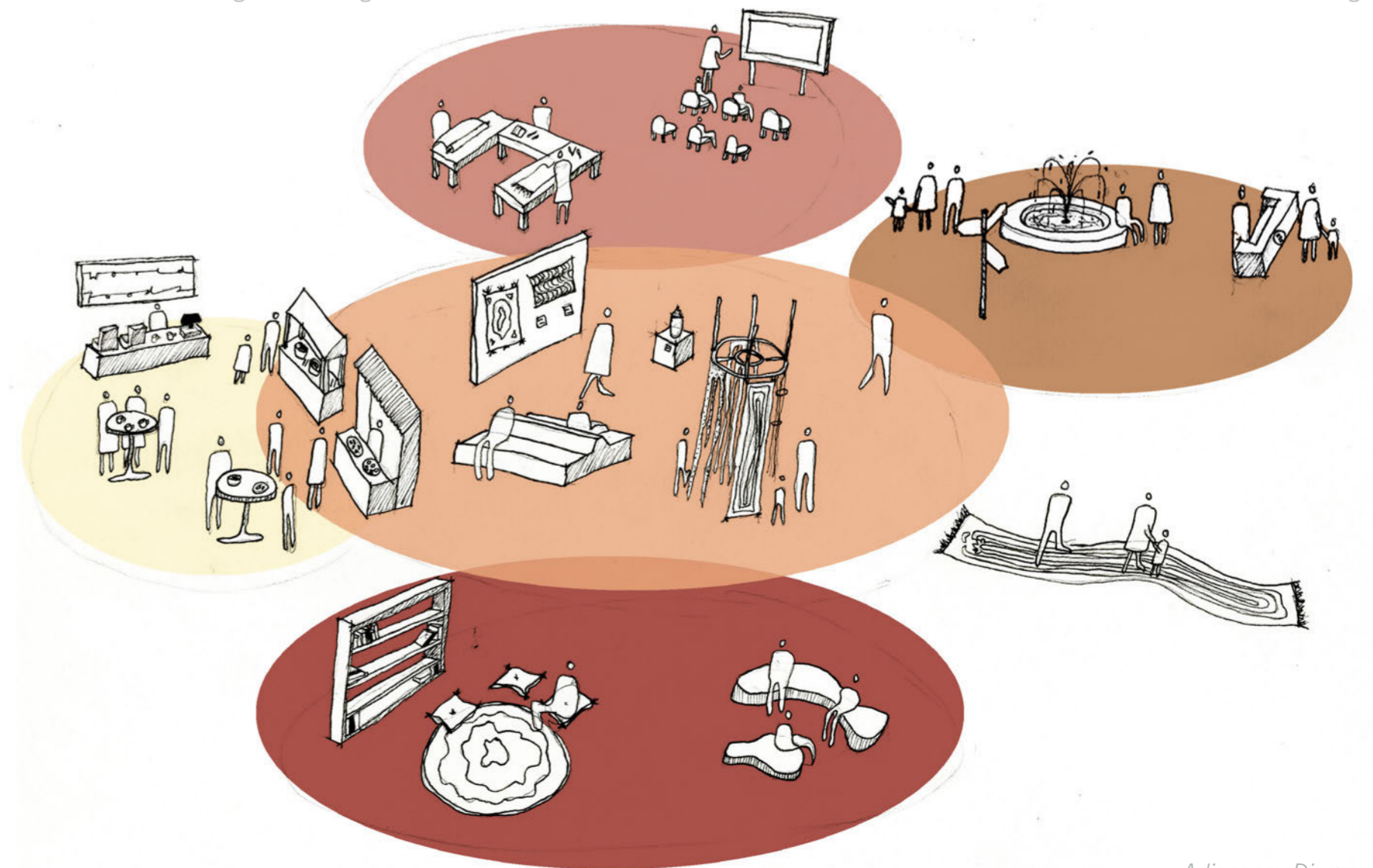
Ahmed migrated from Libya to escape the conflict with his family. He helped his mother weave different fabrics together in Libya ever since he was young but since moving to the UK he has been unable to carry that on. He now found his new hobby in teaching people in creating textiles but isn't many places that allow him to express his cultural textile background and would love a space that would enable him to teach something that he loves to a variety of people from different cultural backgrounds.



Personas that will visit and/or volunteer Weaving Culture

There are 10 million migrants in the UK with 6.4 million being outside of the EU. As Boathouse 4 is within Hampshire, I initially looked at statistics of International migrants in that county and discovered that majority of migrants reside in major cities such as Portsmouth and Southampton. I looked more closely into areas within Portsmouth and it is shown in Portsea and Southsea, south-west of Portsmouth, is the most highly concentrated areas of migrants where my site is situated. What was also noticeable in the surrounding areas of my site is a lack of community centres that provide migrants or those with multi-ethnic background a space that they can go to where they feel their heritage can be celebrated.

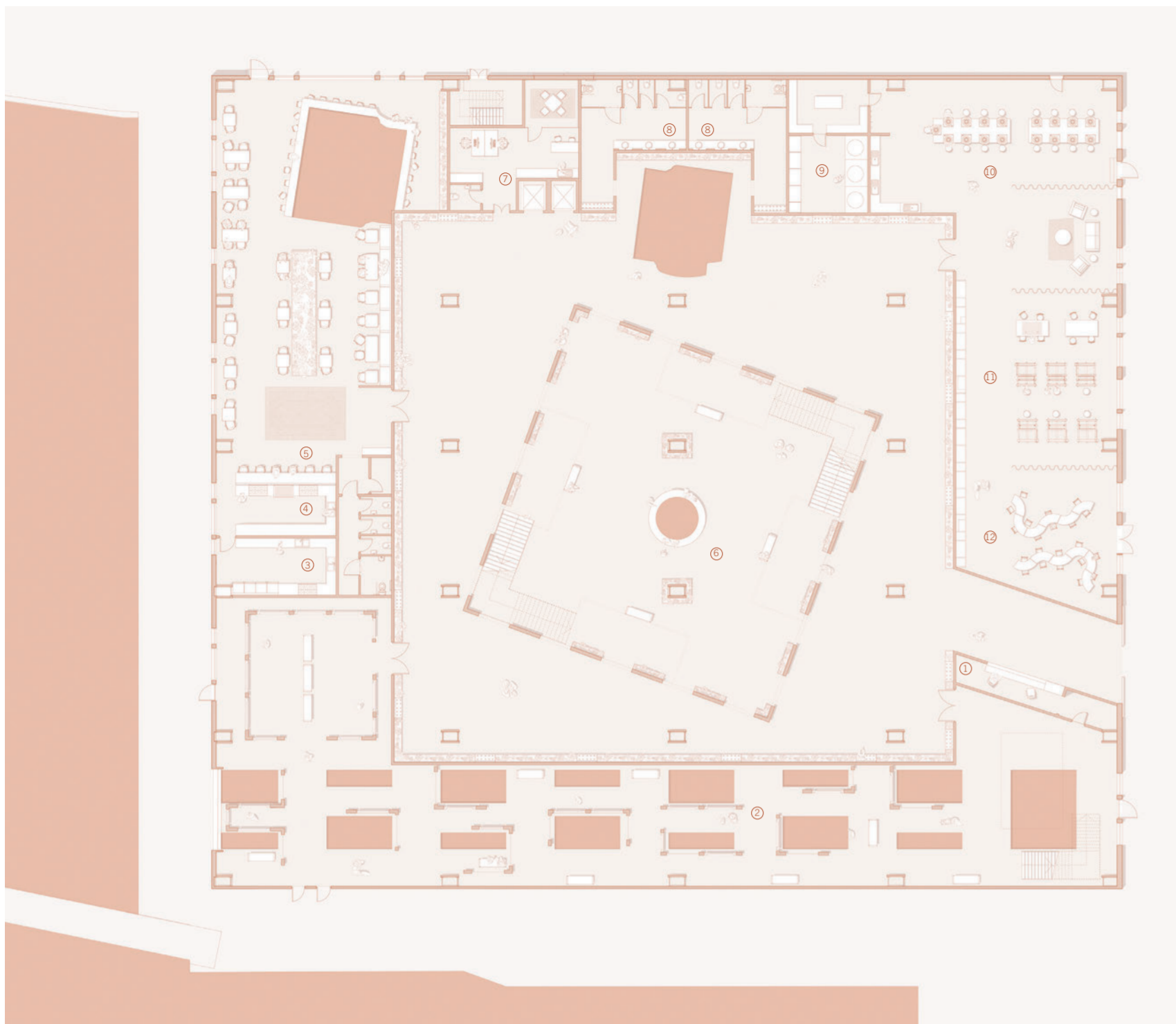
This enabled me to conceptualise the sort of community space I wanted to create and the sort of users that might visit Weaving Culture. Boathouse 4 was a great site to propose a design like Weaving Culture, as located at the dockyards created this connection to water and the links of inviting users from both national and international scale.



Adjacency Diagram

# Social Context

Connecting People Together



Ground Floor Plan

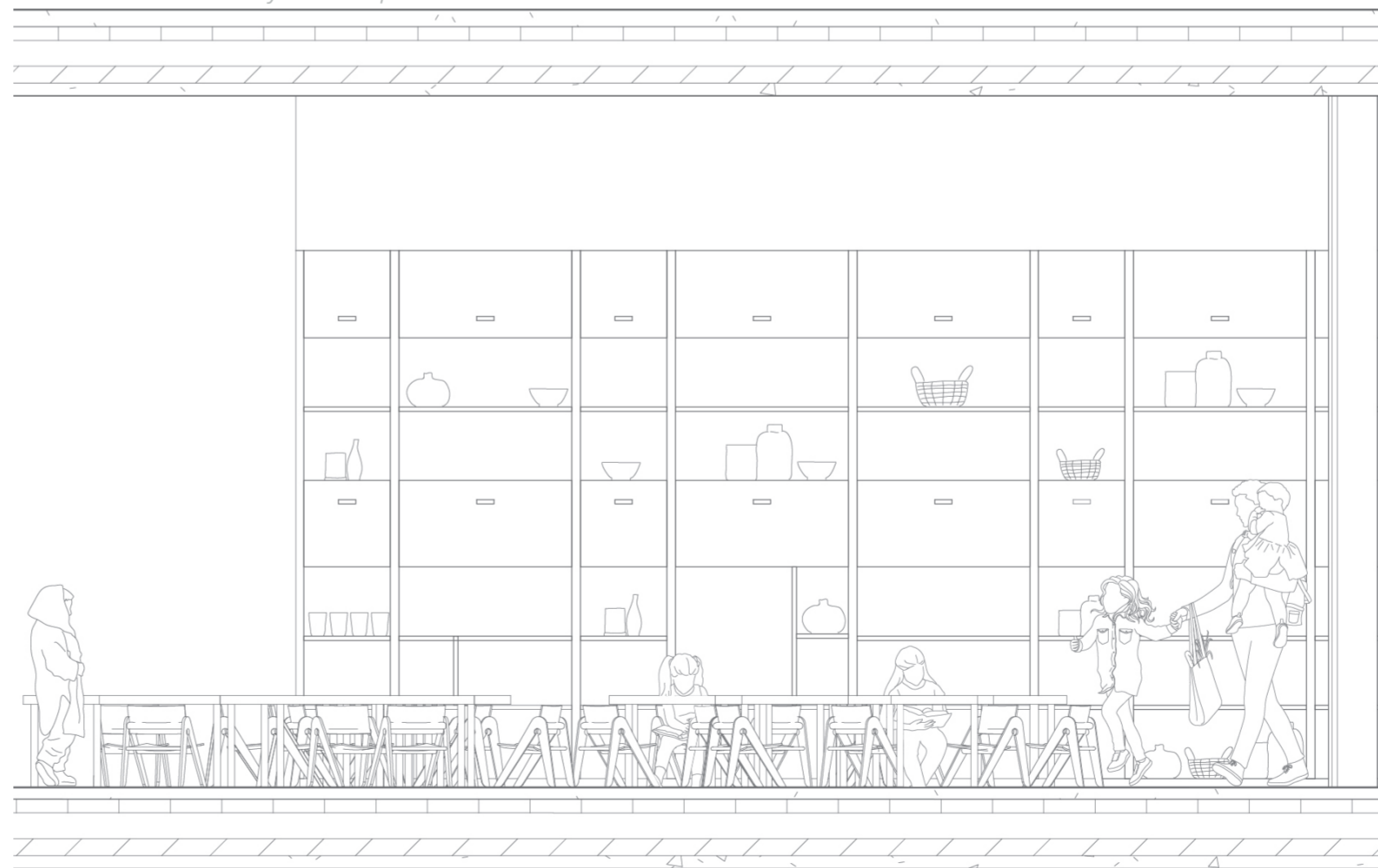
- Key
- |                               |                |                                      |
|-------------------------------|----------------|--------------------------------------|
| ① Reception                   | ⑤ Restaurant   | ⑨ Kiln/Storage Area                  |
| ② Islamic Textiles Exhibition | ⑥ Courtyard    | ⑩ Pottery Workshop                   |
| ③ Preparation Area            | ⑦ Staff Office | ⑪ Textile Workshop                   |
| ④ Open Kitchen                | ⑧ WC           | ⑫ Children's Textile & Clay Workshop |



Children's Textile & Clay Workshop.



Restaurant Viewing the Open Kitchen.



Elevation of Children's Textile & Clay Workshop.

The ground floor comprises of the main exhibition space that takes you on journey through islamic textiles in a weaving circulation that sits on what was once a canal that brought in boats but has been partially covered in smaller openings, giving glimpses of the water below. The canals on the other side of the building have been retained for viewing platforms, with the restaurant having a high-top seating providing a perfect view of the water whilst dining with friends or family.

A clay and textile workshop has been designed to give users a space to freely create and educate themselves on textile and ceramics of the Islamic world. The workshop is seperated into three different areas, clay, textile and children's workshop. These spaces can be seperated by a floor to ceiling length curtain still allowing an open communal space if needed. A bespoke shelving unit allows for easy access to storage as well as display space for the designs users produce.

# Design Proposal

Weaving of Communities

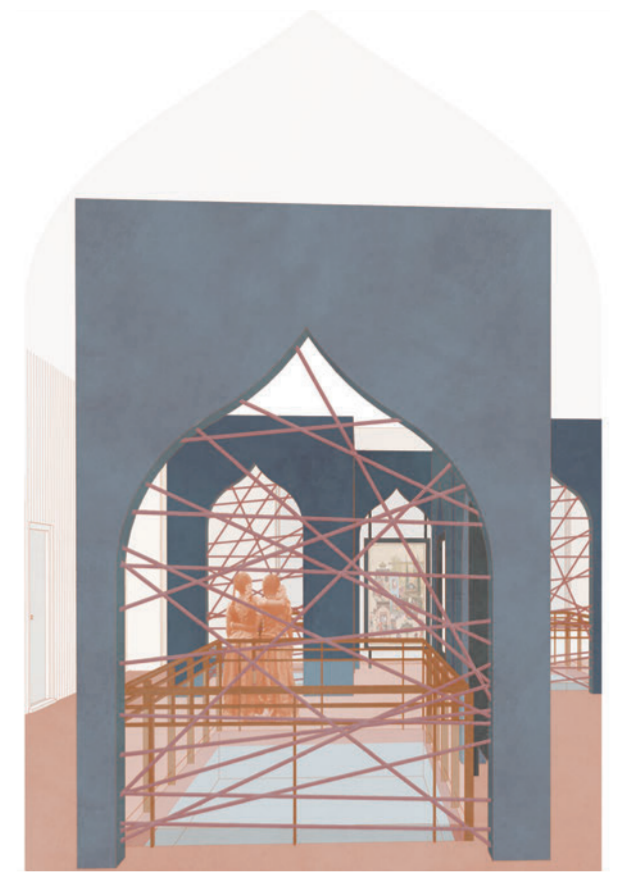


Islamic Art & Ceramics Exhibition.

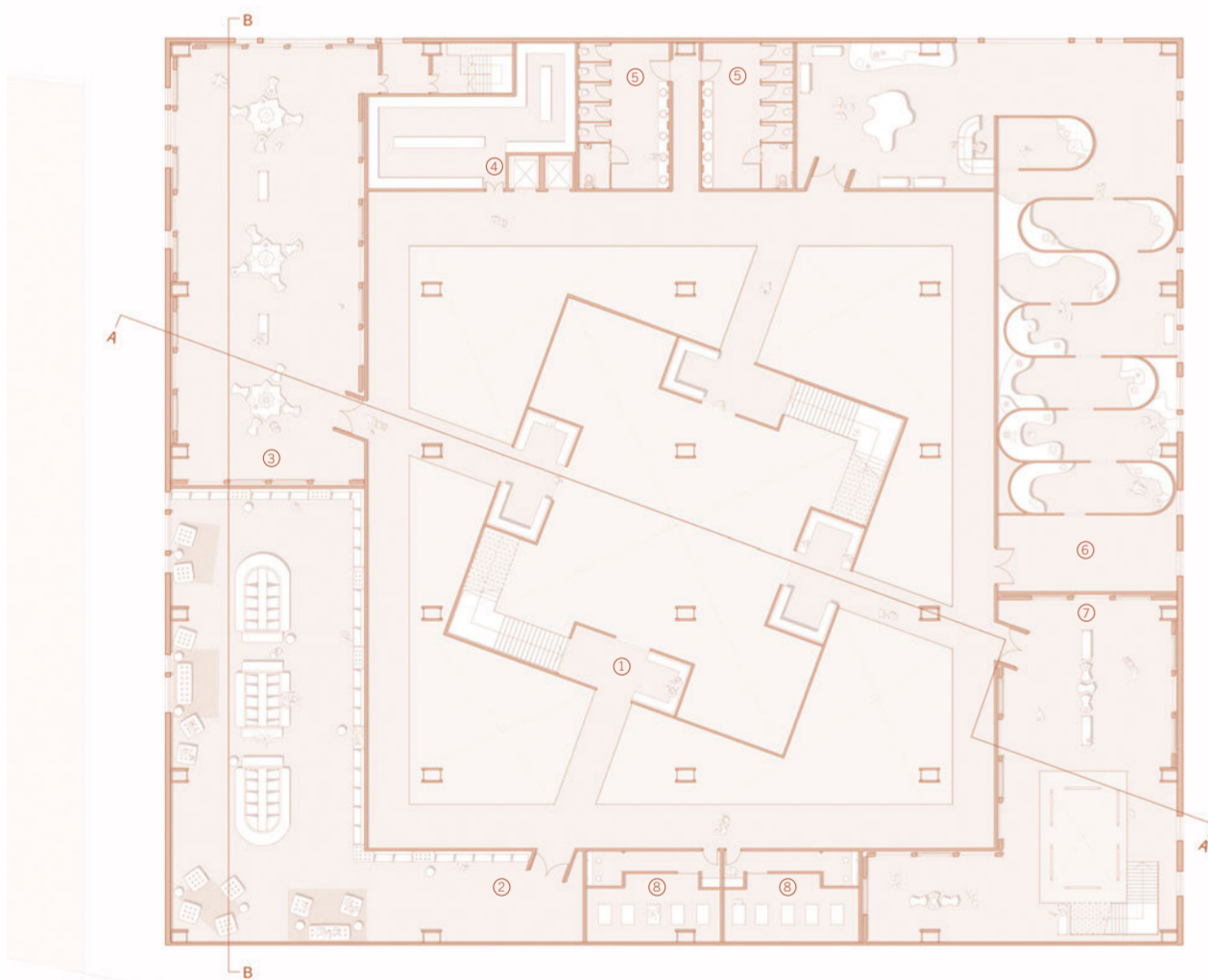
To reflect Islamic architecture, temporary exhibition walls with ogee archway openings has been designed to display artefacts within these openings. Coloured ropes will occupy these archways, a symbolism of the weaving of cultures coming together.

A display platform to exhibit Islamic ceramics has been proposed, using the same tessellated shapes that are in the panels of the courtyard and have been tiered to allow a collection to be put together that can be easily viewed when moving around the space.

There are multiple exhibitions on the first floor, exhibiting different Islamic cultural arts including modern Islamic art, giving recognition to Middle Eastern, North African and other countries within the Islamic world a space where their artistic voice can be heard and express the beauty of their culture that is being neglected due to prejudice. To fit with the idea of modern art, this design follows a contemporary style with the circulation following the horizontal archway walls and organic curves that reflect the sand dunes.



Main Exhibition Space with exhibition walls surround canal pockets.



First Floor Plan

- Key
- ① Balcony Seating
  - ② Library
  - ③ Islamic Art & Ceramics Exhibition
  - ④ Storage
  - ⑤ WC
  - ⑥ Modern Art Exhibition
  - ⑦ Islamic Textiles Exhibition
  - ⑧ Prayer Room



Library

With a rich history of cultures, a library has been included where a numerous collection of books of different genres will be offered for those who want to educate or reminisce about the various cultures. Arches have also been intergrated into the library, offering quiet reading booths for either individual or small groups. Floor seating is traditional in the middle east with geometric fabric patterns and has been incoperated into the library space. It creates a comfortable atmosphere, allowing easy movement so that large groups can gather for communal reading.

To create an inclusive space, two prayer rooms, following Islam has been seperated for men and women, has been included that can also convert into a multi-faith room at certain times to freely allow everyone to practice their religions.



Section B-B



Restaurant rich terracotta palette with terracotta tiling and Arab textiles.



Library with individual and communal reading booths.

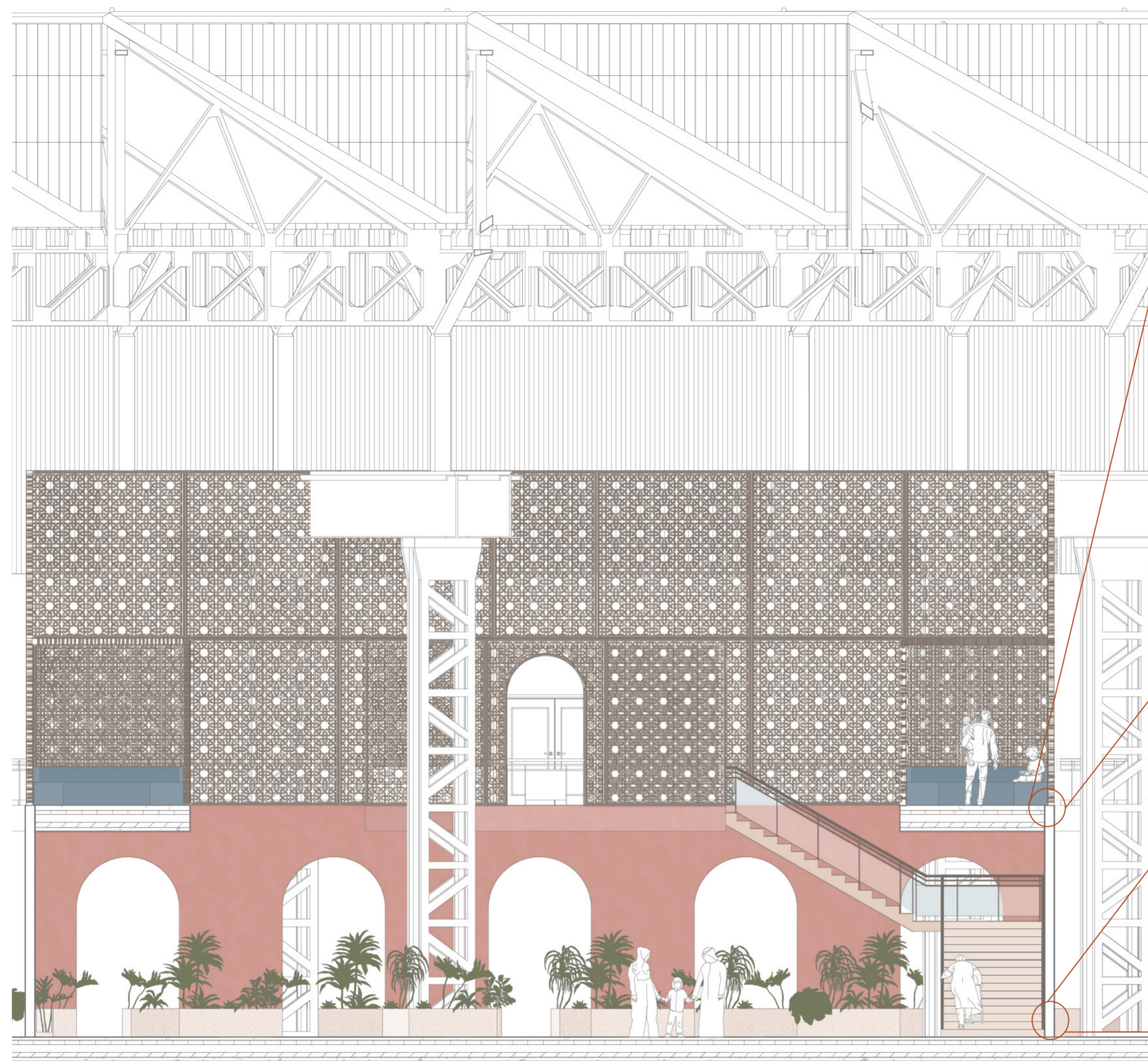
# Weaving Culture

Even the Smallest Moments Last Forever

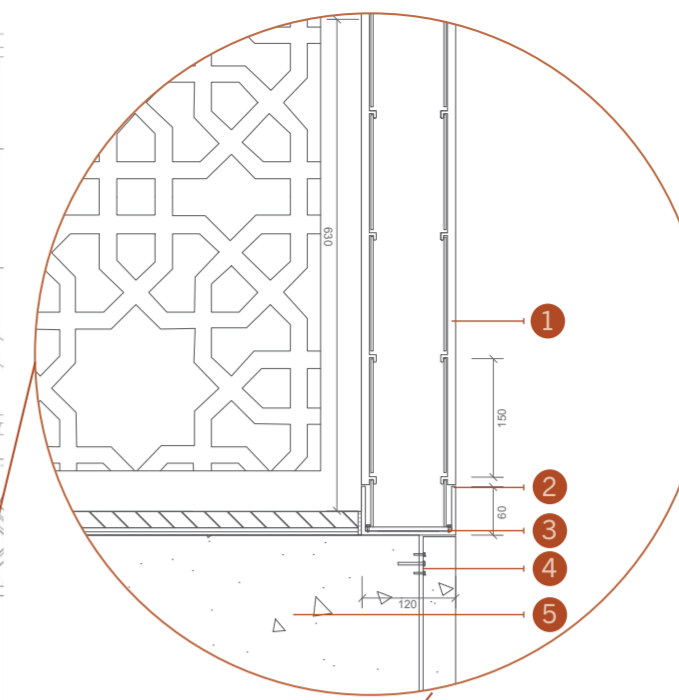
Courtyards are seen throughout Islamic architecture and to create a space that transforms you into an area that reflects this, a courtyard has been designed as the central space of Weaving Culture. When entering, you are welcomed with the view of the courtyard filled with tropical plants and a fountain, an homage to the many Islamic and Middle-Eastern style interior.

To reflect Boathouse original materials, concrete and metal has been designed in mind, with looking at earthy but also rich colour palette of terracotta and bronze to formulate the overall design of the courtyard. A contrast of the delicate tessellated patterns that is frequently seen in Islamic architecture, and the rigid terracotta coloured concrete with high archways offers a grand welcoming space. Having the tessellated panels creates a statement of the importance of inclusion with having these panels coincide with the historic structure of Boathouse 4 built by the community that is the Dockyard.

This welcoming space is also used as an entryway onto the first floor, with stairs running up to either side of the courtyard leading to a balcony. These balconies run on all sides of the courtyard, with U-shaped seating that has an opening in the centre overlooking at the courtyard below. These are connected by walkways offering more views of the ground floor space.



Section Detail of Courtyard

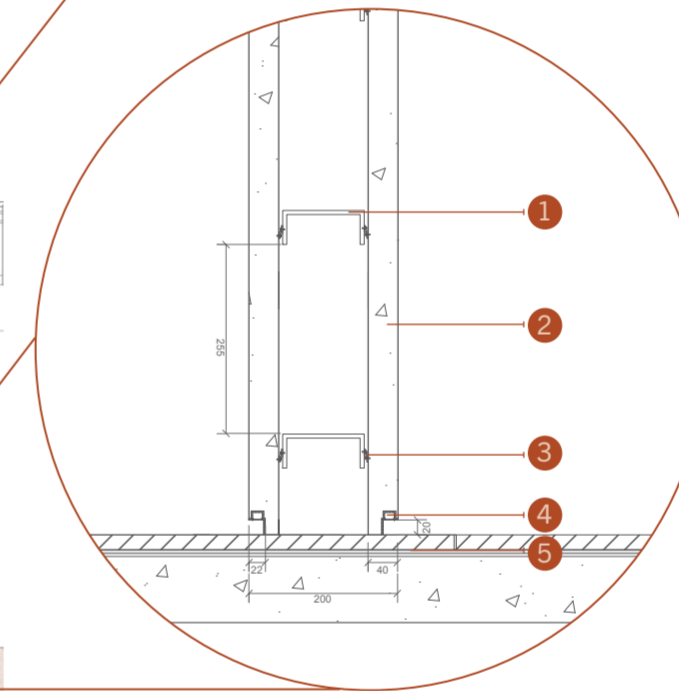


Scale 1:10

### Tessellation Panel

Key

- 1 8mm Bronze Anodised Aluminium Tessellated Panel
- 2 6mm Bronze Aluminium U Channel
- 3 Frame System W/ Mounting Bracket & Base Plate
- 4 Terracotta Coloured Concrete Wall Panel Bolted to the Slab
- 5 Concrete Slab



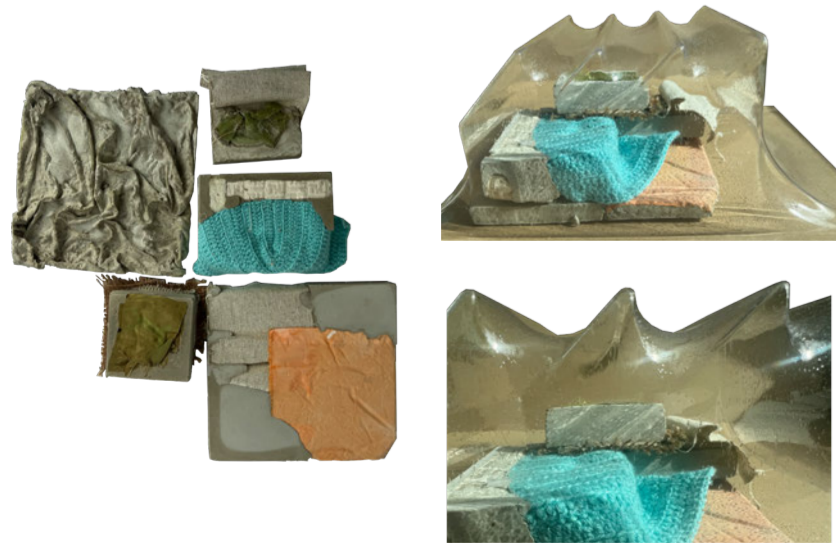
Scale 1:10

### Concrete Panel Wall & Shadow Gap

Key

- 1 6mm Steel C Channel
- 2 40mm Terracotta Coloured Concrete Wall Panel
- 3 GRC Restraint Bracket
- 4 2mm Aluminium Shadow Joint W/ LED Strip Lighting
- 5 1mx1m Beige Porcelain Tiles

### Detail Development



I experimented with this idea of industrial solid materials such as concrete and combining it with various fabrics. This experimentation allowed me to create a detail in which weaving can be introduced to other materials. Combining the experimentation and the silhouette, the outcome created a contrast of delicate and rough textures, where light seeps through some areas.

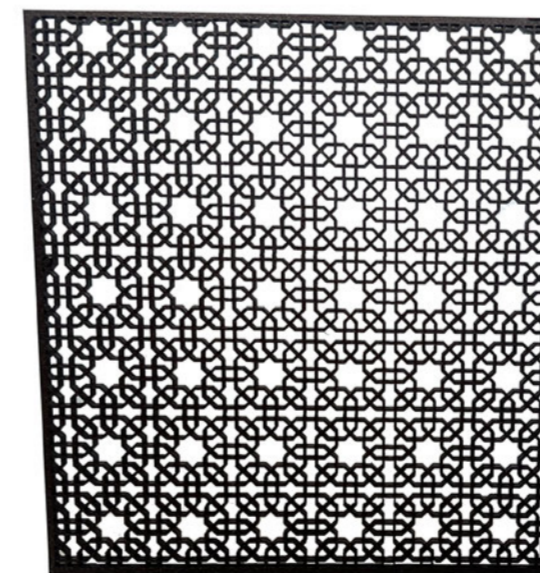
### Material Palette



Key

- 1 Terracotta - Coloured Concrete
- 2 Ceramic Tiling
- 3 Bronze Anodised Aluminium
- 4 Beige Porcelain Tiles
- 5 Sand Colour Limewash Paint Finish
- 6 Planting

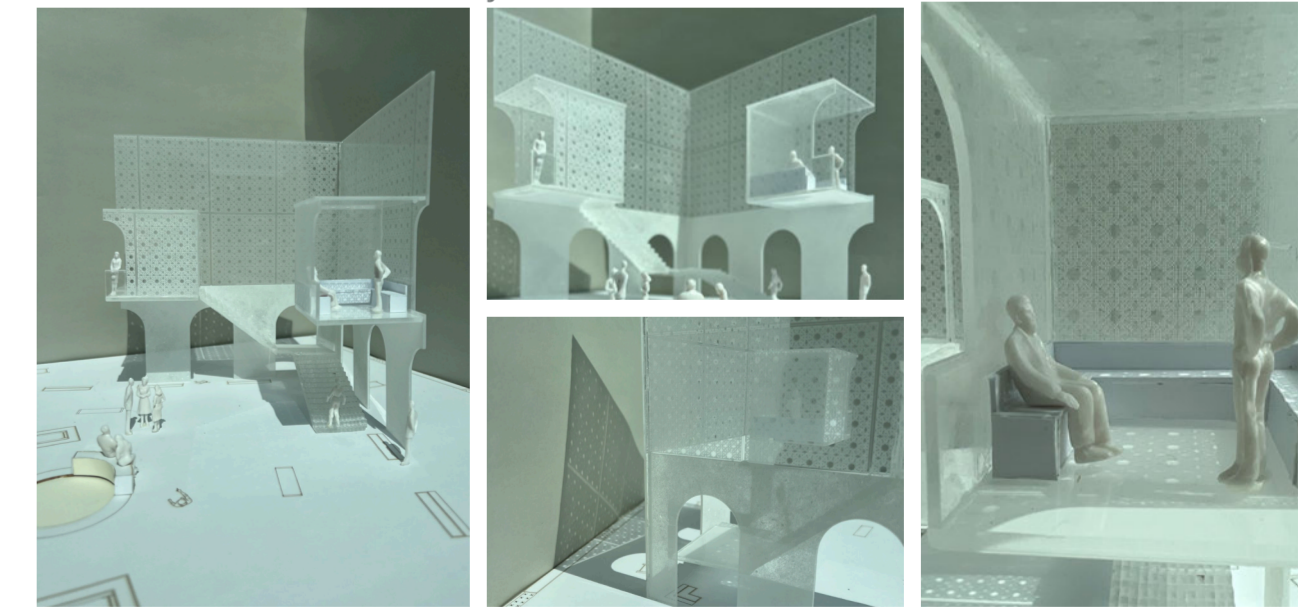
### Tessellation Panel Prototype



Please scan QR code for a short video on how the tessellated panels that will be fixed on either side of the frame will be seen by the user.



### Section Model of the Courtyard in 1:50



A section model of the courtyard has been made, giving detail on balcony space and most importantly how light will filter through into the tessellated panels. Having the balcony along with the open courtyard space on the ground floor creates a space for either a more intimate gathering for family and friends or an open communal space where interaction with the community is encouraged.

# Courtyard

Developing Material Detail