

L'Ostello AT ST GEORGE'S

Key words for the design: **youthful, organic, geometric, playful, colourful.**

St George's Building is really well located, next to the axis to Hotwalls and Gunwharf Quays and really close to university's sport facilities and library.

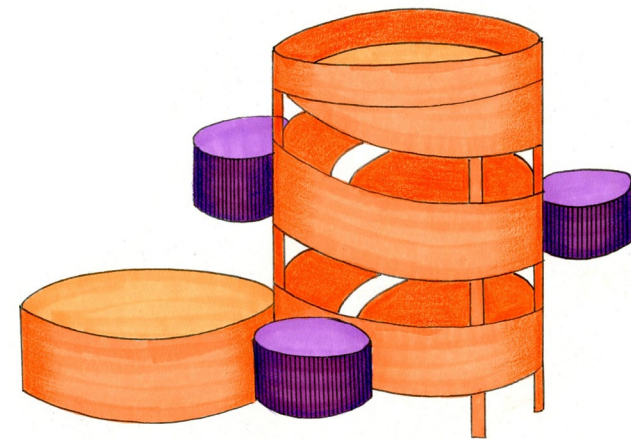
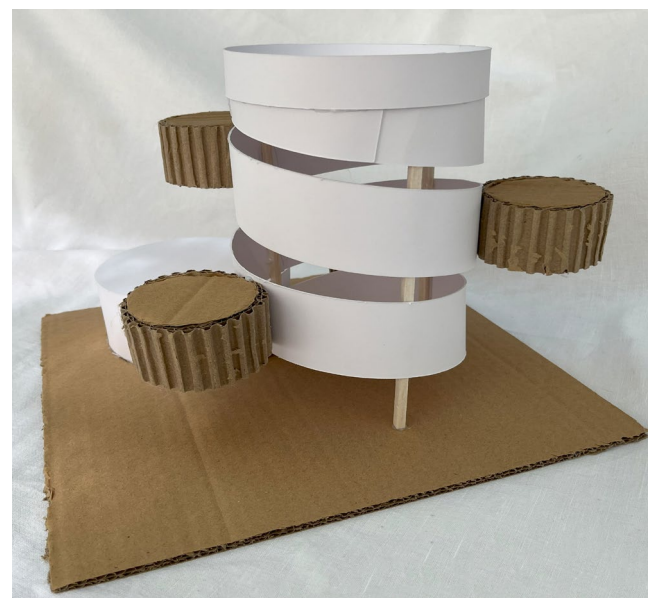
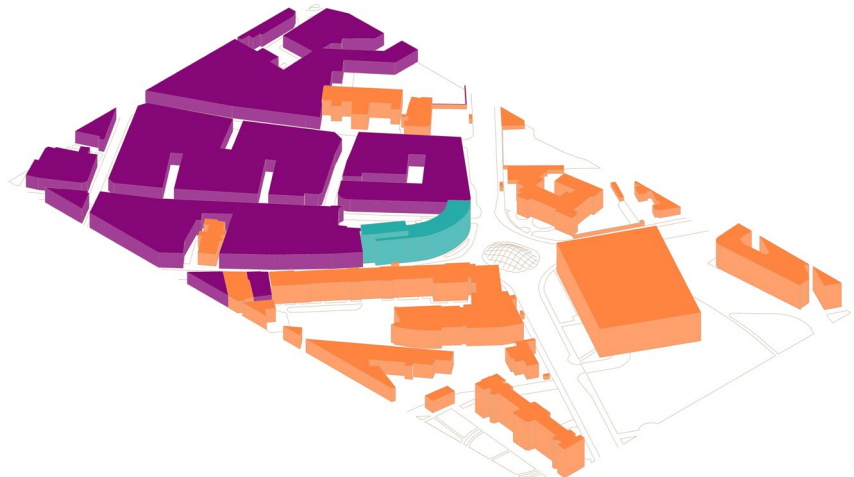
L'Ostello means the hostel in Italian. The name has been chosen as an attractive and welcoming way to represent the multicultural and inclusive nature of the university and of the city in general. Without mentioning that it is an easy word to remember as well!



Built originally as a hotel in the 1960s, it was later acquired by the client and is currently home to childhood and youth studies courses. However, but the building is currently not being used to its full potential



Site Analysis. Clockwise from left - Traffic flow and nearby bus stops; Private and Public Context, Pedestrian flow and nearby bus stops.



Public Private

Concept Model - Organic



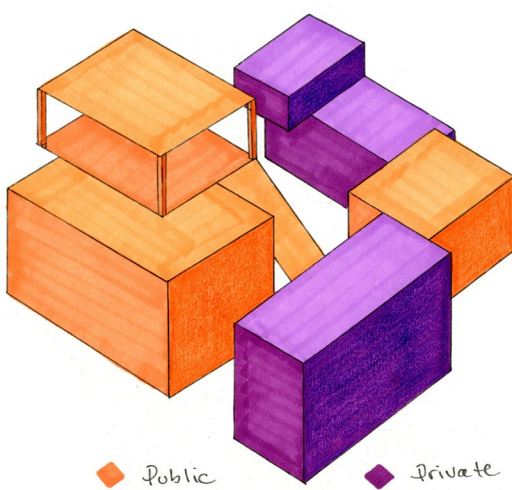
Carla, Nina & Jon
Visiting family
This family are visiting for an Open Day Experience. Carla is a wheelchair user so they will be staying in one of the mid-term accommodation suites that have been designed with inclusivity features in mind. Inclusive access has been provided on both entrances to the hostel and the spacious lifts guarantee they can have their breakfast on the rooftop restaurant overlooking the IOW, Gosport and The Solent.



Tyler, Nick & Leo
American basketball players
These three American friends are here to take part in the semifinals for the International Basketball Championship that is being hosted by the university over the Spring Break. Since they will be here only for a few days and are on a student budget, they will be staying in one of the shared short-stay accommodation rooms that includes access to a self-catered shared kitchen.



Paula
Postgrad exchange student
She is an exchange student from Switzerland who is doing research work as part of her PhD in Biological Sciences. Since this project will last nine months, she will be staying in one of the long-stay self-contained duplex. That way she will have the feel of a small apartment when returning home from a hard day of research.



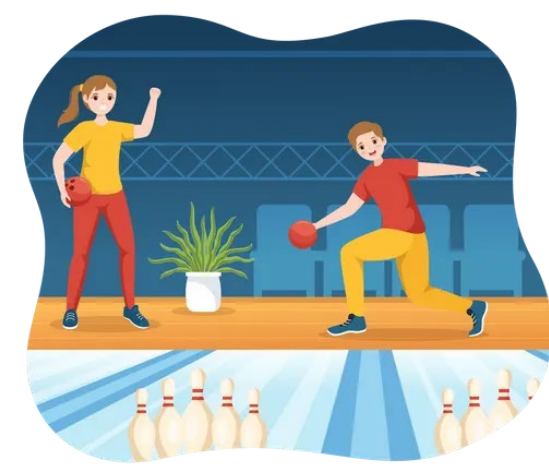
Public Private



Concept Model - Geometric



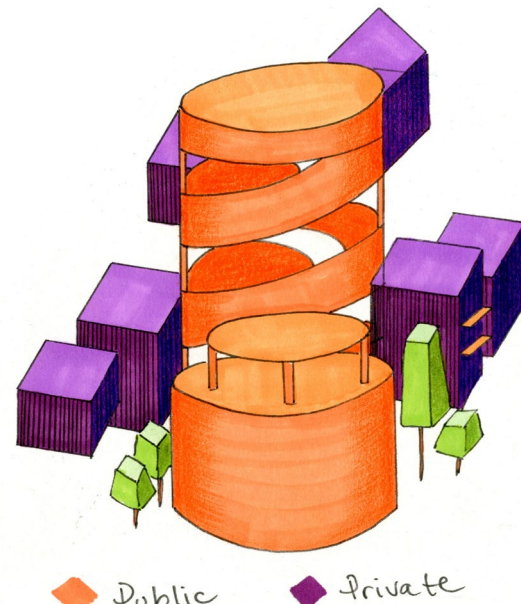
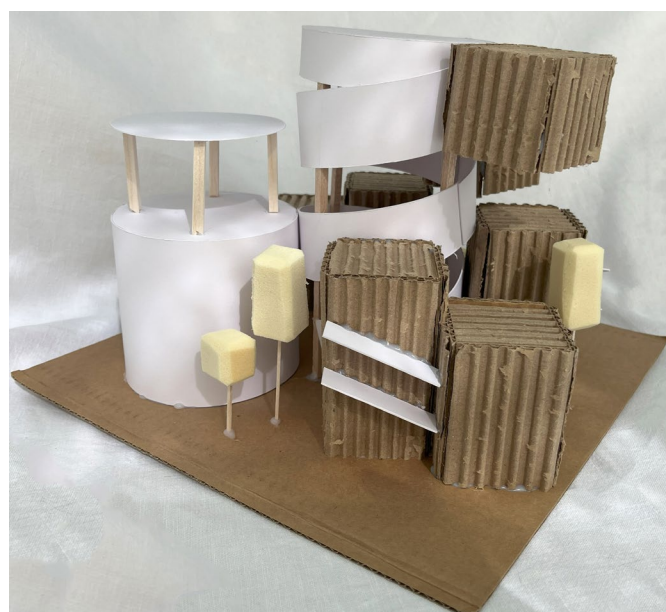
Dan
Member of Staff
He works for university in the office located on the Ground Floor. He rides his bike to work every morning, so he will be using one of the showers that are available on the same floor. Staff are encouraged to use the lounge premises on the Ground Floor to work and meet, and when privacy is required, they can use the glazed meeting room that is next to the main office.



Stephanie & Matt
Undergrad Couple
This couple met as undergrad students and they like to come and study in one of the comfortable sofas that are in the ground floor lounge area. In the evenings, they like to hang out with their friends at the Heart Bar, grabbing a drink whilst playing board games or bowling, and listening to live music in the Basement when not experiencing Virtual Reality in one of the pods.



Martha and Jennifer
Members of Staff and Running Buddies
Martha has an appointment at the Sports Massage Therapy Centre located on the ground floor. They are running buddies and are both members of staff. Martha hurt her right leg whilst they were training for a marathon. After Martha's appointment, they will watch the latest movie produced by the local Film Production Students at the O Cinema located in the basement.



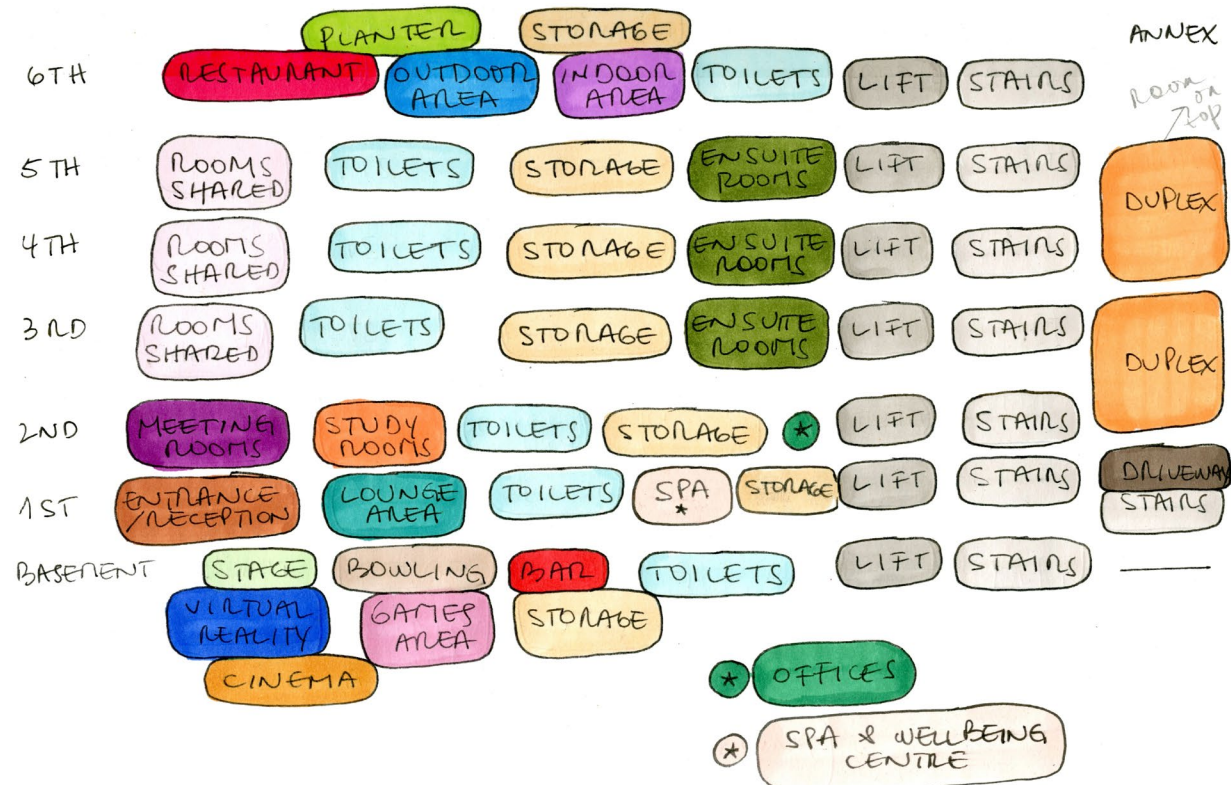
Public Private

Concept Model - Fusion of Organic and Geometric

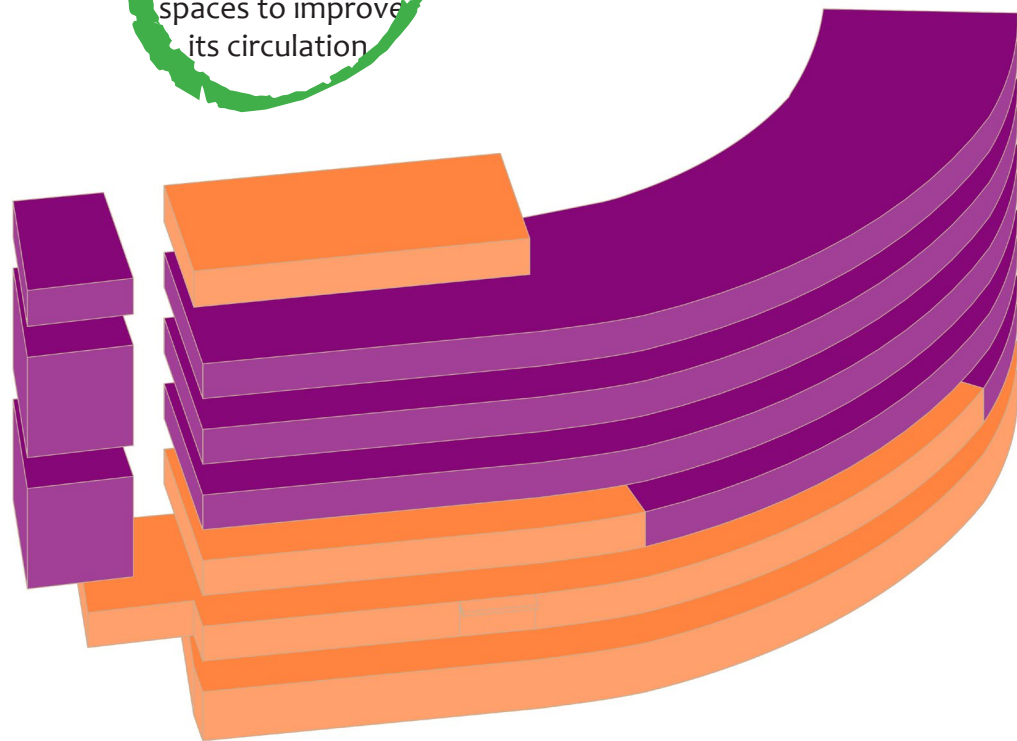
CONCEPT MODELS

PERSONAS

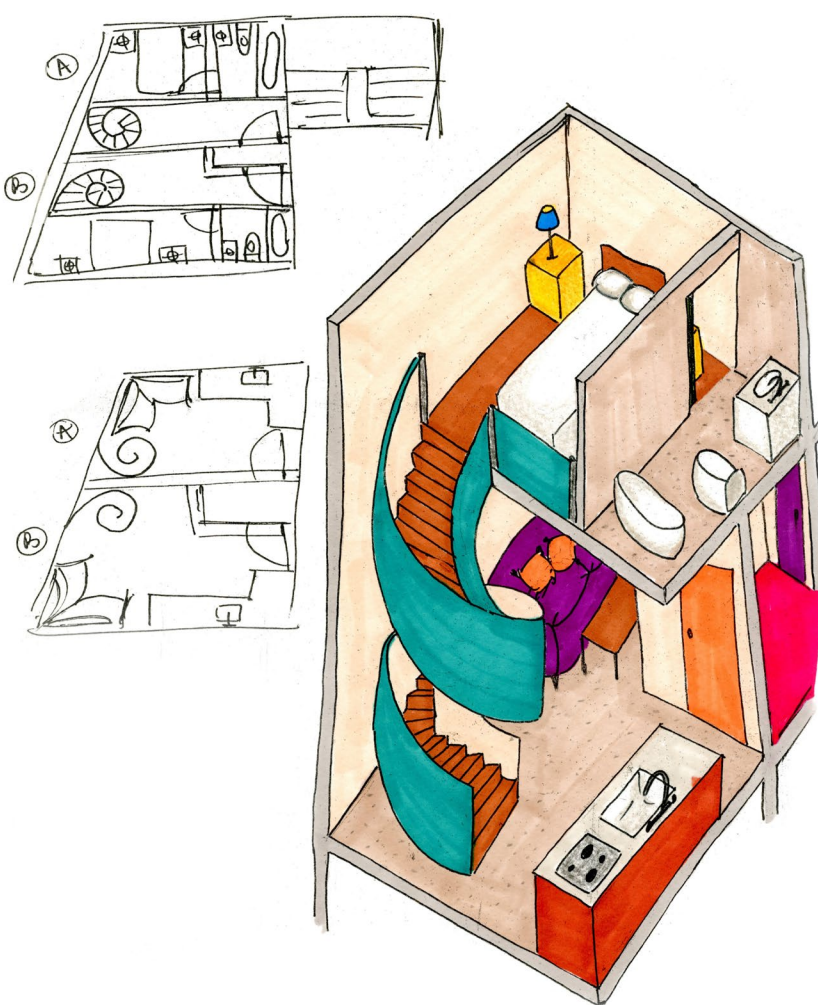
INITIAL SKETCHES AND DIAGRAMS



The building has been divided into public and private spaces to improve its circulation



Proposed Public/Private distribution

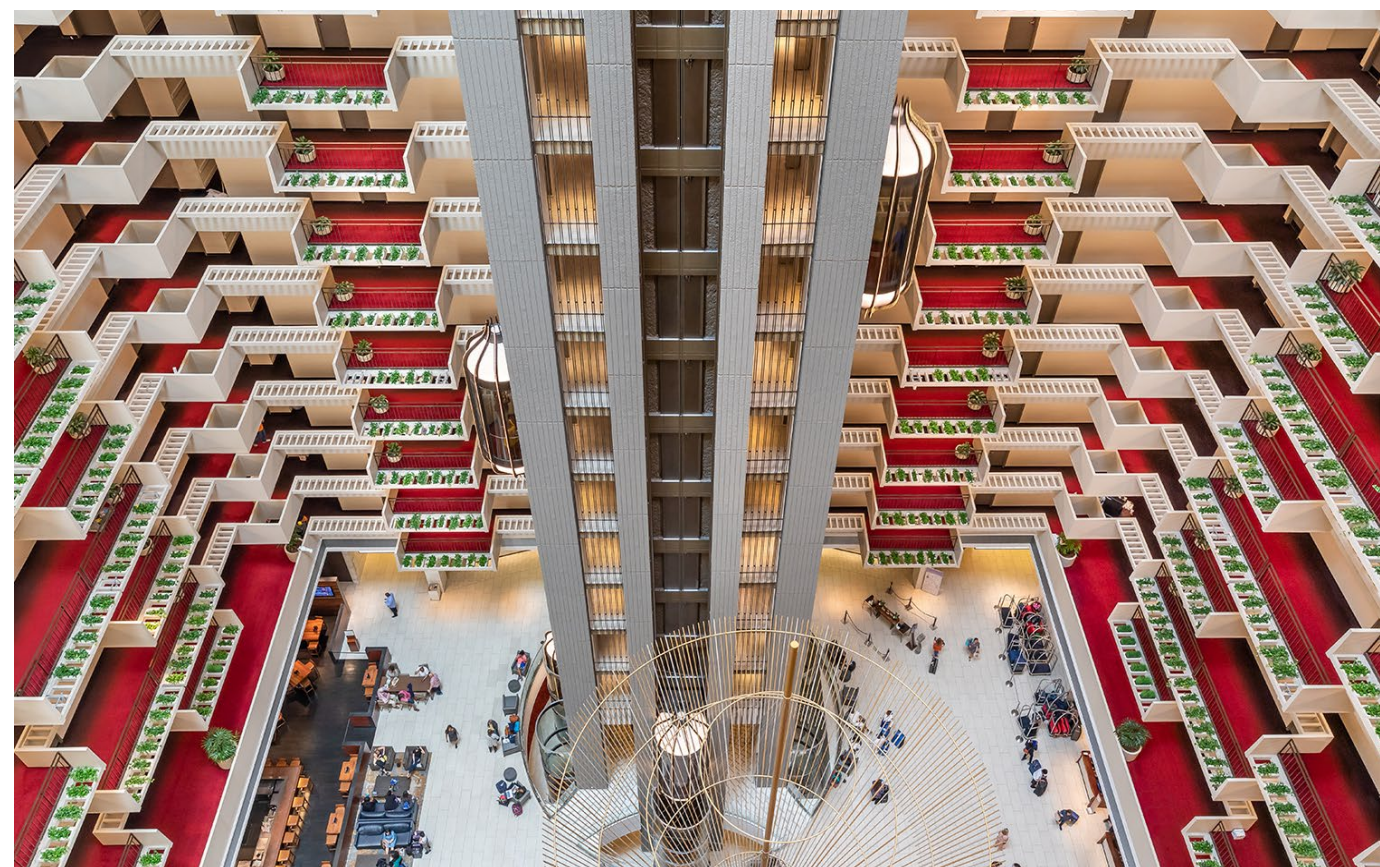
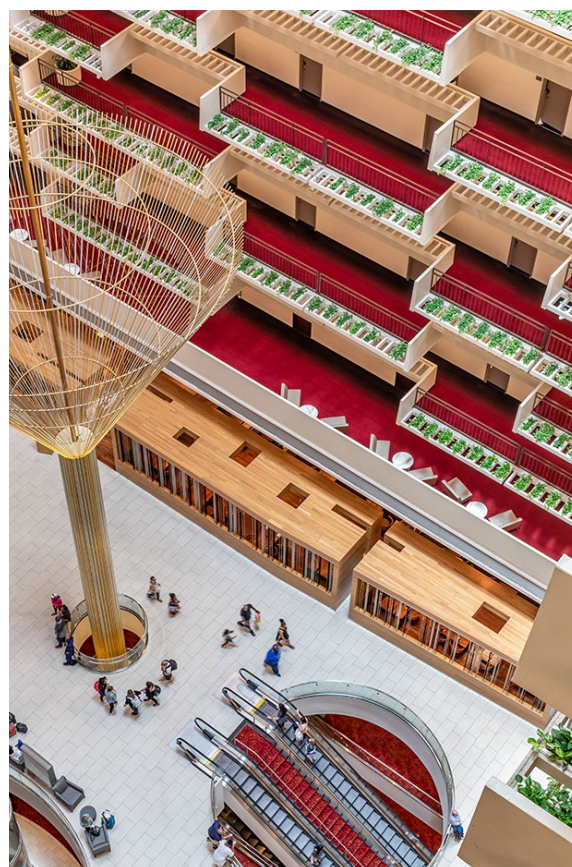
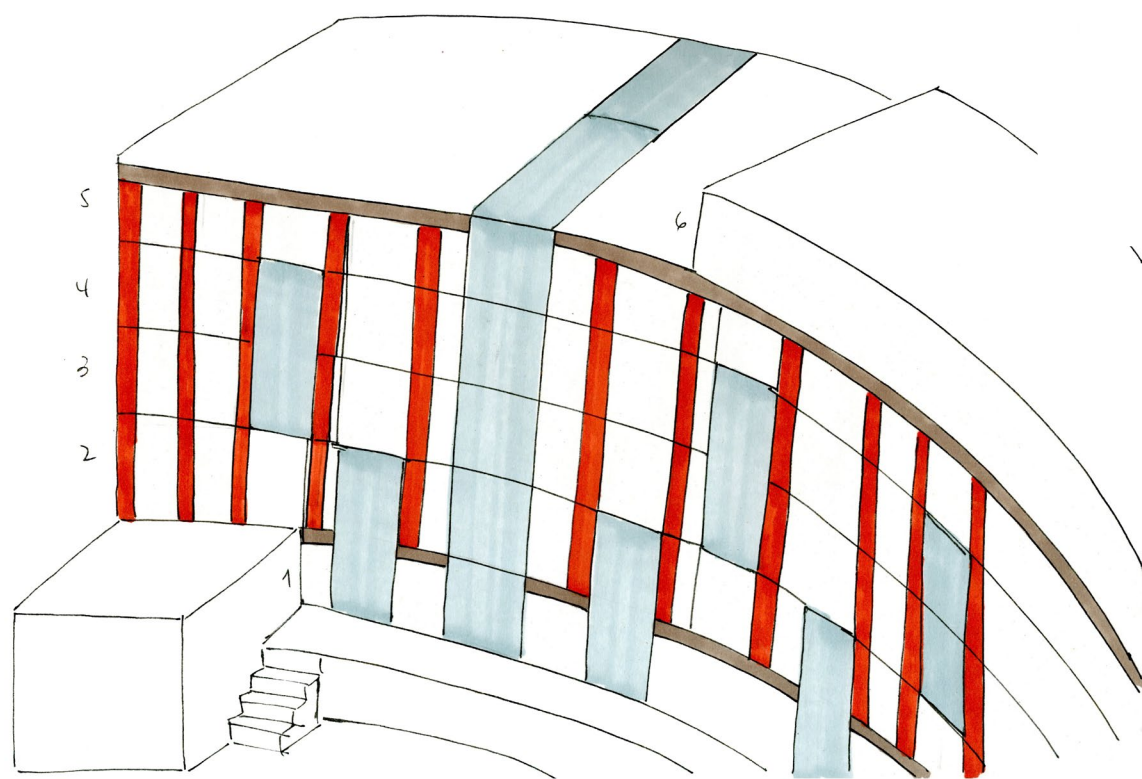


Duplex Unit - Initial sketch

The front entrance has been relocated and a big vertical void has been created, uniting the space between the ground floor lobby, the basement and up to the fifth floor. This arrangement will welcome the visitor and guide the eyes up.



Second Home London Fields - Estudio Cano Lasso, London, 1967 / Elements for design - Colourful office space, clever adaptive reuse of existing building



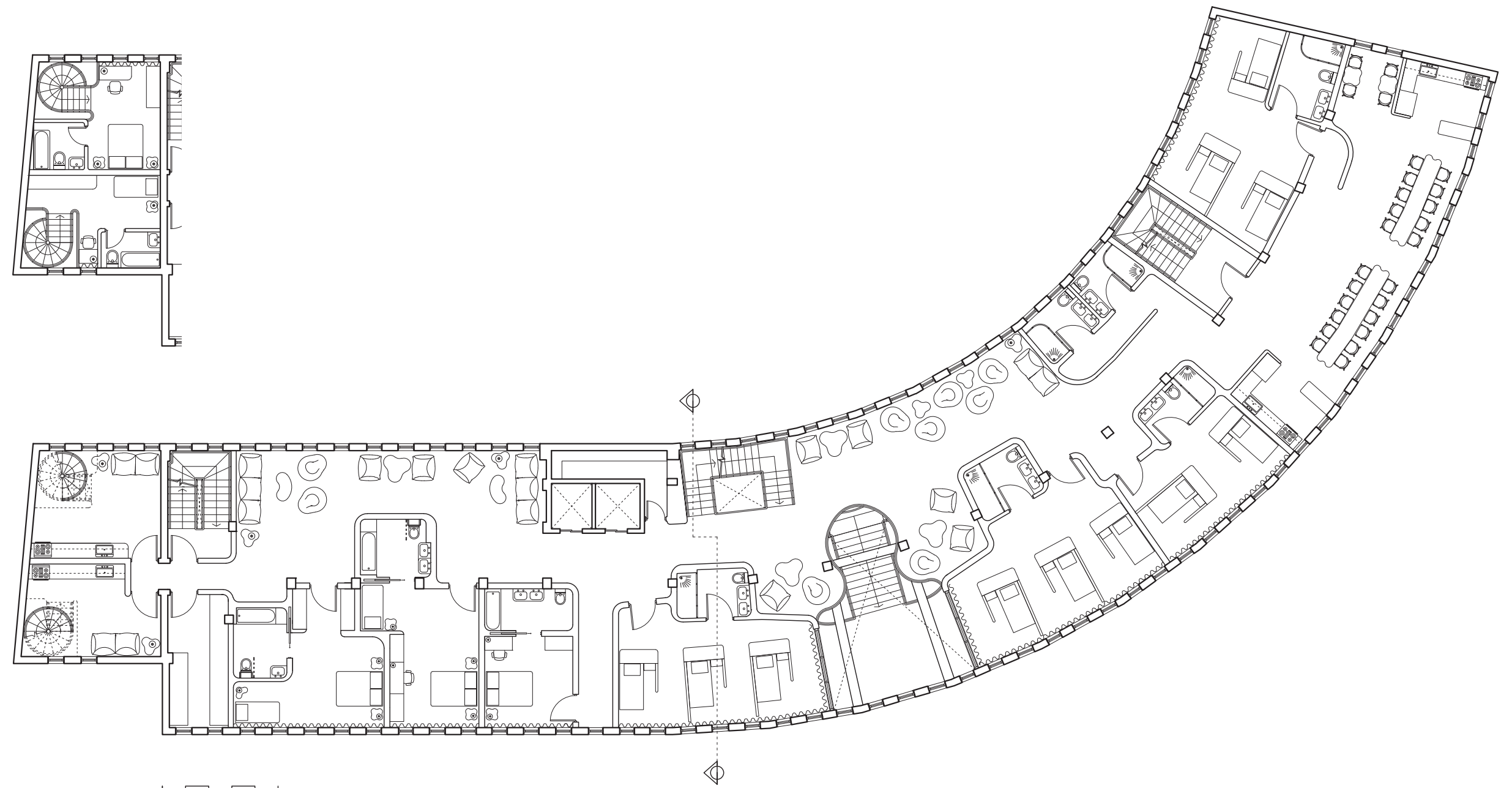
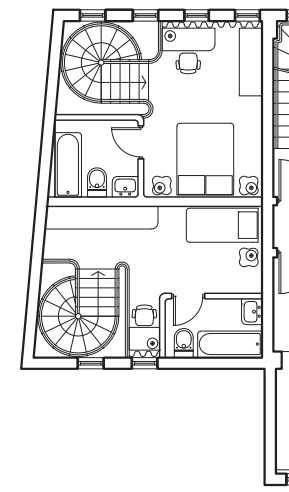
Hyatt Regency Atlanta - John C Portman, Atlanta, 1967 / Elements for design - Atrium, balconies, circular access to floor below

PRECEDENTS RESEARCH

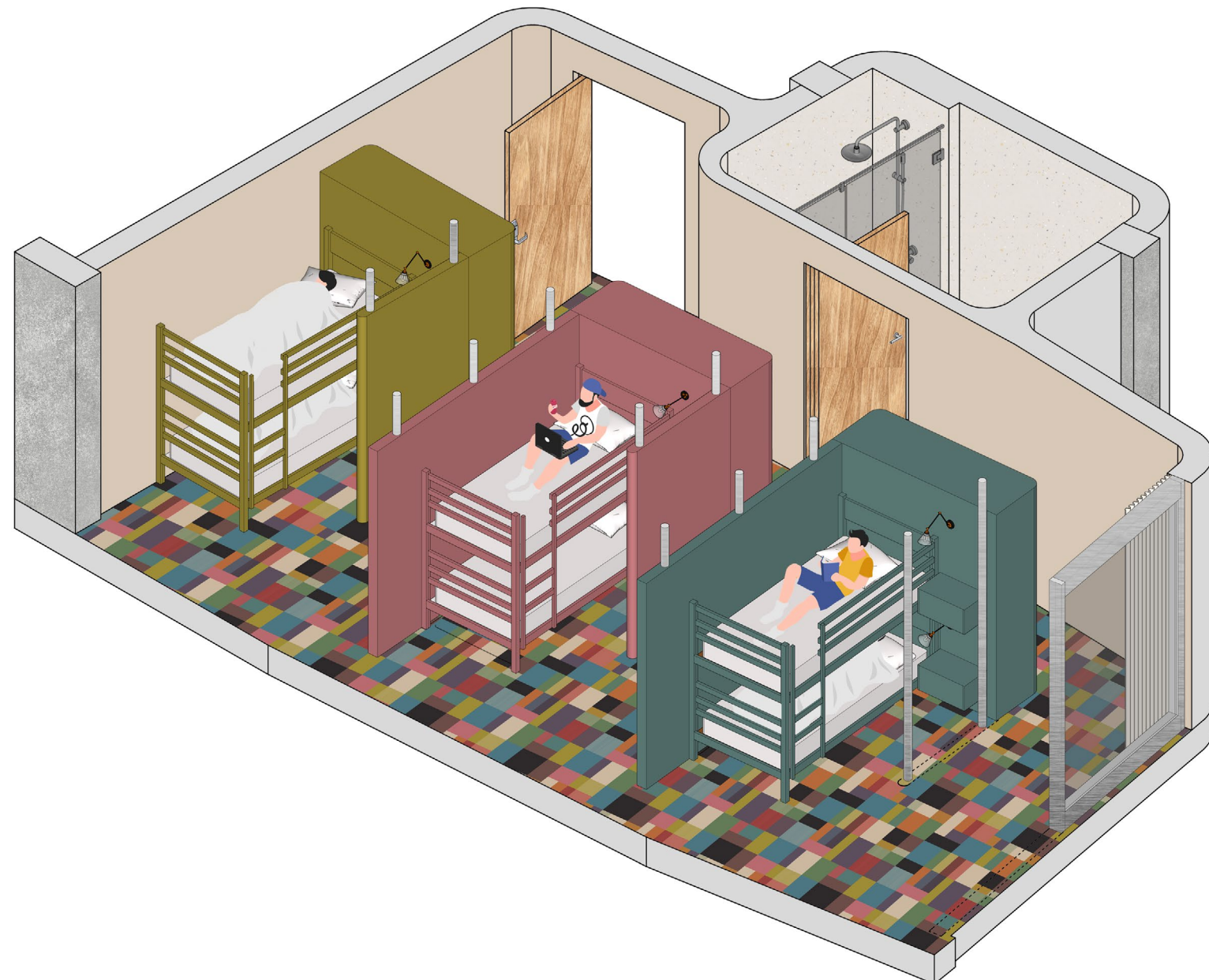
PRIVATE CLUSTER



Long Stay Accommodation - Duplex Unit, Axonometrics, Scale 1:50

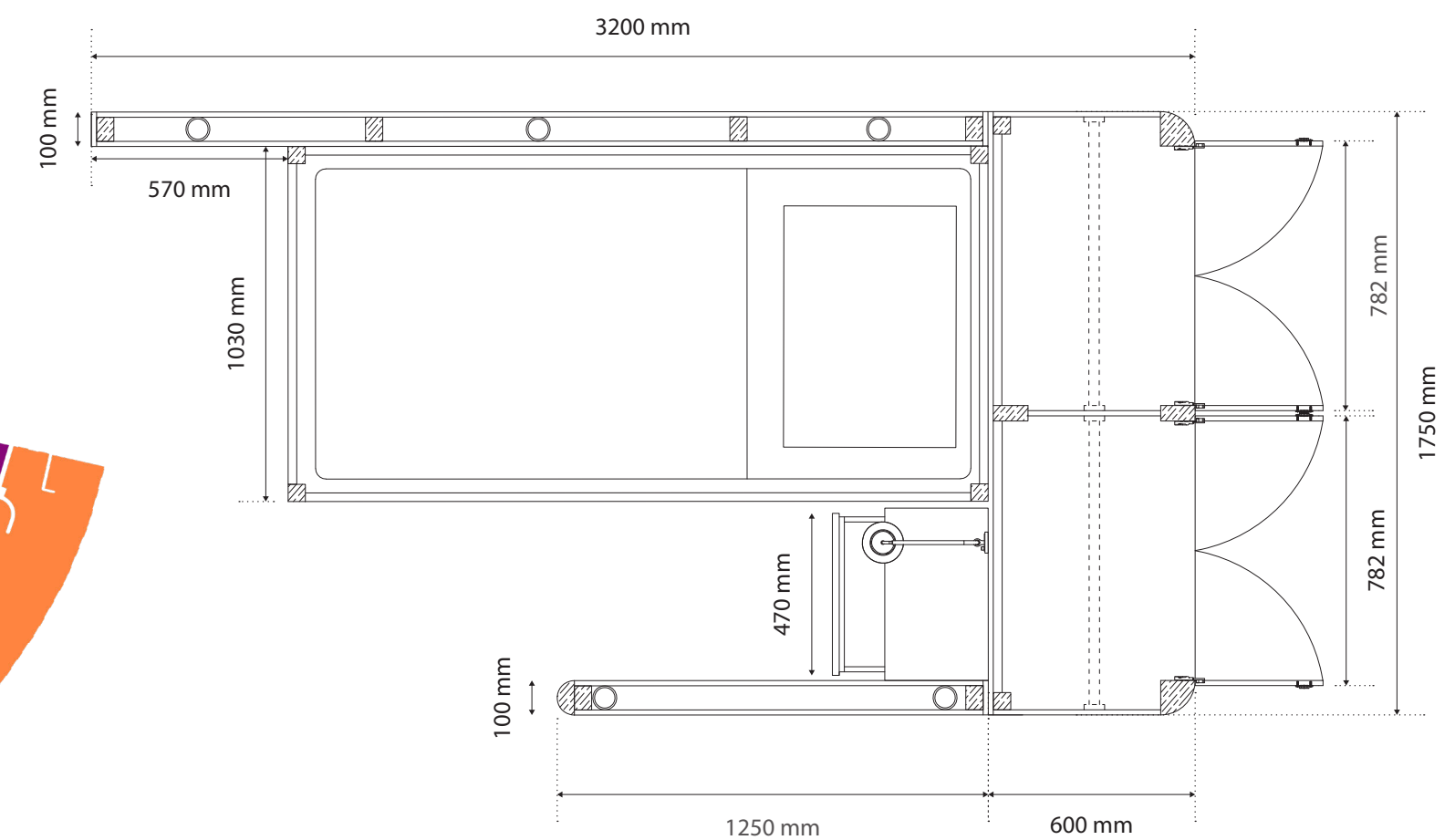


Floor 04 - Duplex bottom floor plus detail of Duplex top floor (floor 05), Floor Plan, Scale 1:200



Short Stay Accommodation - Shared bedroom, Axonometric, Scale 1:50

In the private floors, the sleeping areas have been located on the East side of the plan to enjoy the morning sun whilst an open corridor has been created on the West side to allow spaces for gathering and relaxing.



Selected detail - Furniture. Shared Bedroom bed unit. Floor Plan, Scale 1:20

The **basement** concentrates the core of social activities, with a stage, a bar, the O Cinema, a bowling, virtual reality pods and games area including pool tables and board games.

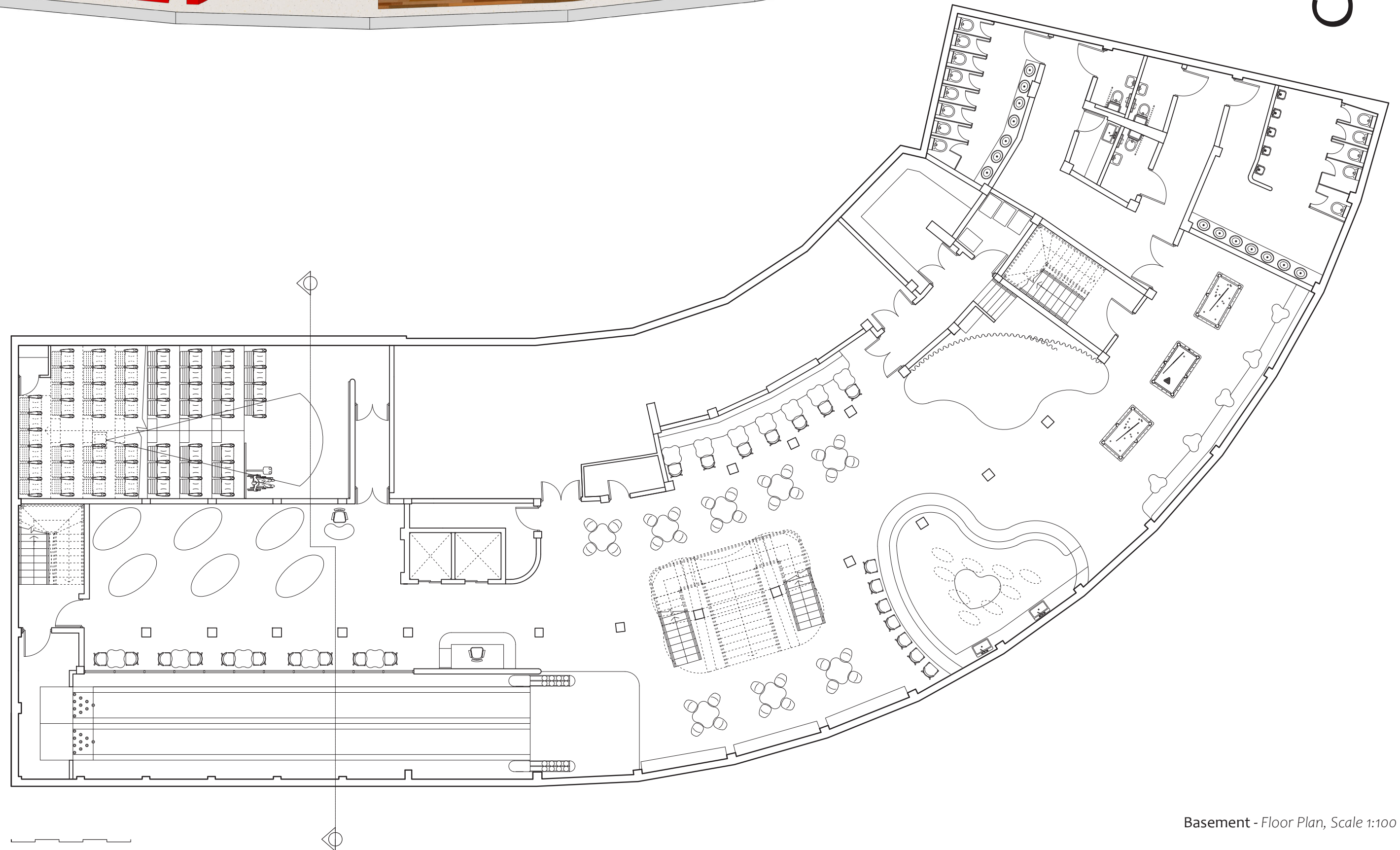


Communal Area - Basement, Axonometrics, Scale 1:50

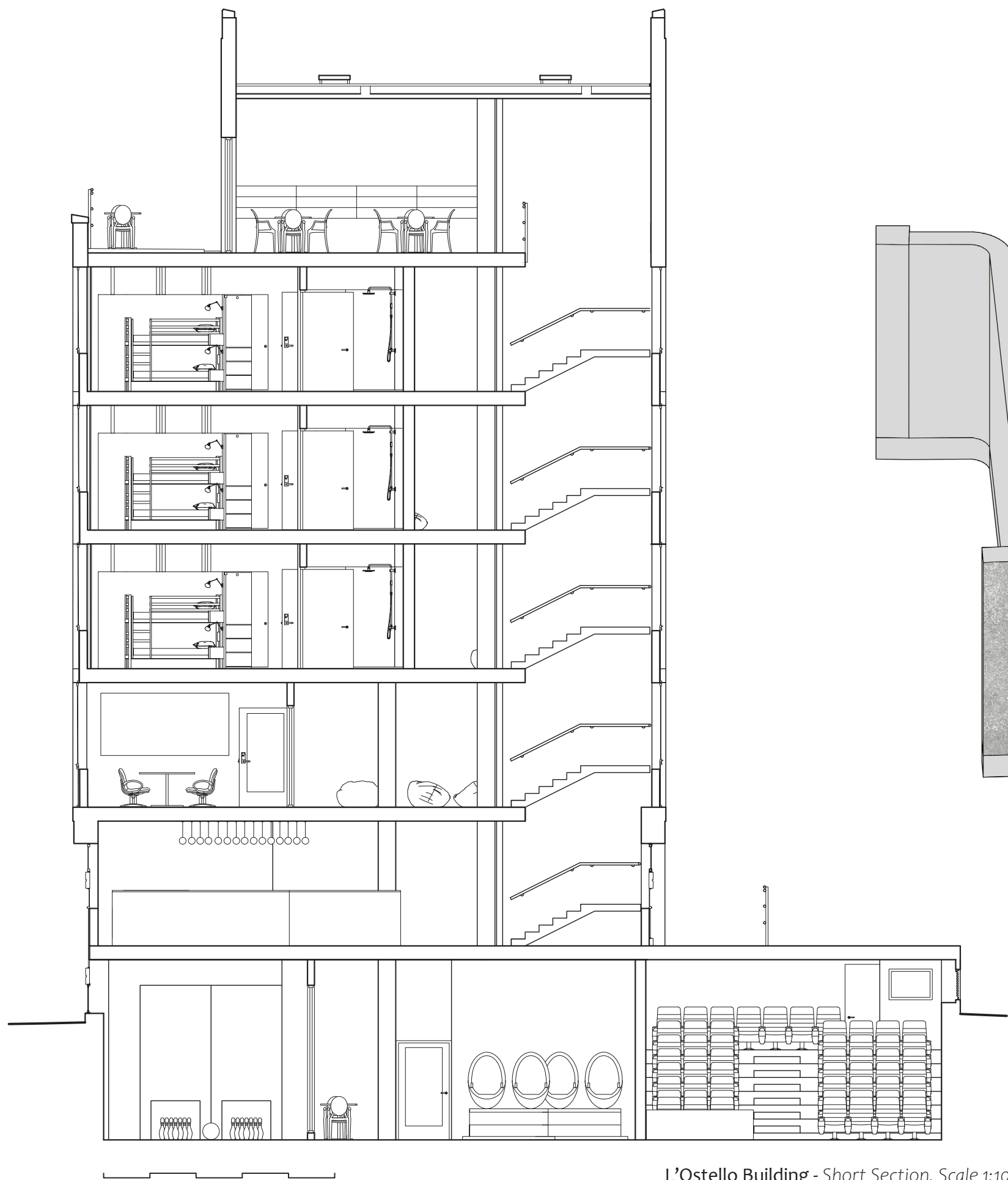
The **public areas** on the Ground Floor include a Sports Massage Centre on the ground floor where Physiotherapy students can perform their practice. The lounge area on this floor is open for all visitors.



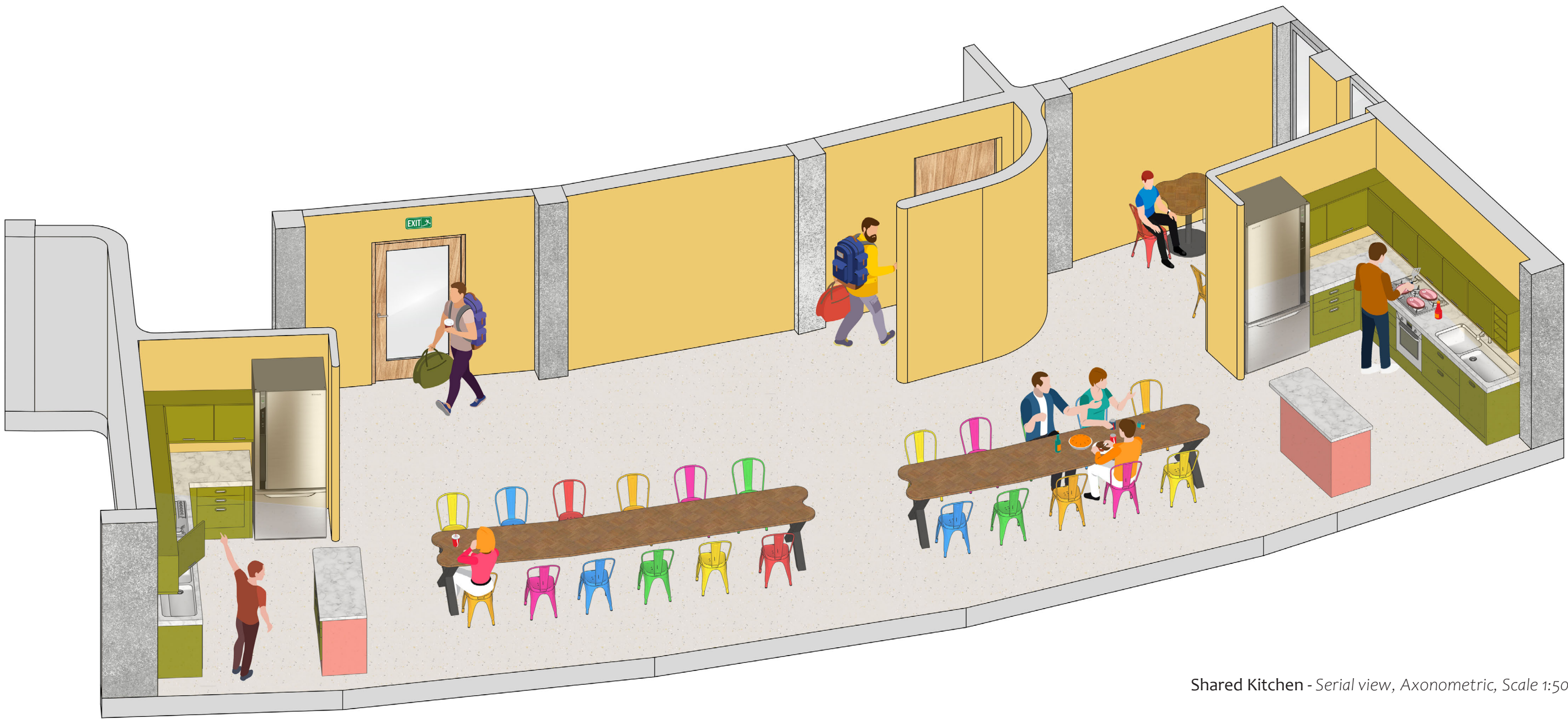
Public Area - Ground Floor Sports Massage Centre, Axonometrics, Scale 1:50



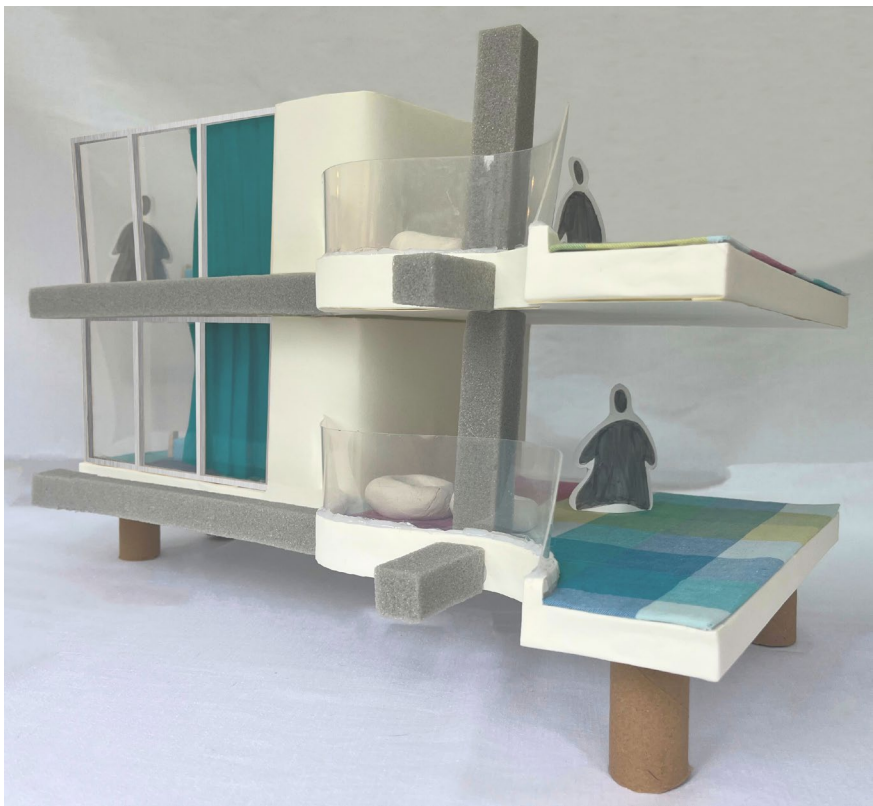
Basement - Floor Plan, Scale 1:100



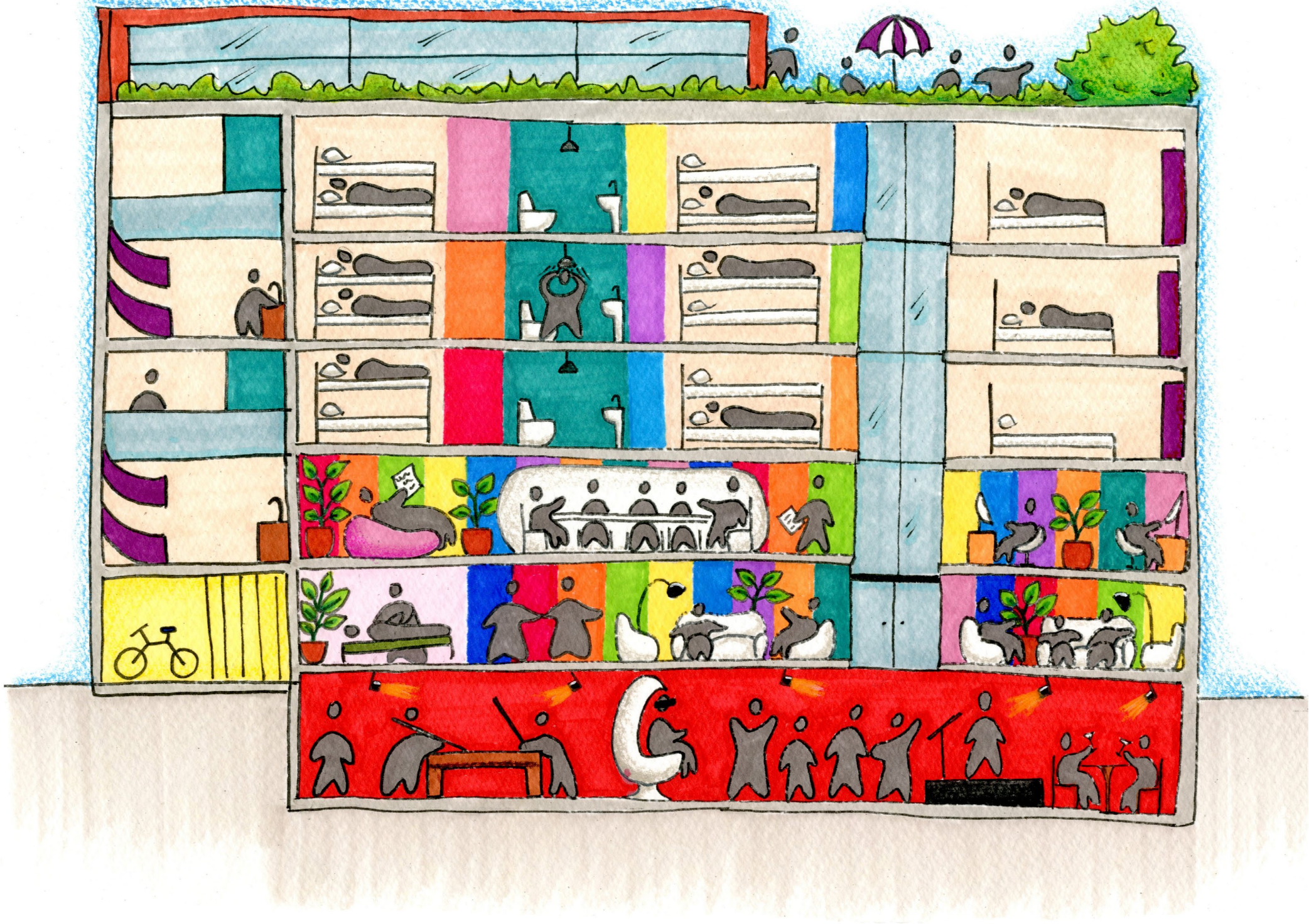
L'Ostello Building - Short Section, Scale 1:100



Shared Kitchen - Serial view, Axonometric, Scale 1:50



Final Model - Selected area, Scale 1:25



L'Ostello Building - Sketch Section