

reintegrate

The project Reintegrate is a space designed within the building of Knight and Lee, that aims to be a vision of the future through providing a positive alternative to current Young Offender Institutions through the power of retail, by giving current and ex-young offenders and other disadvantaged young people productive and meaningful opportunities to set themselves up for the future, whilst feeling a part of a community.

The initial inspiration for this project began with investigating the experiences that young offenders face whilst in custody and when they are released, where these two seemingly different experiences in fact had same or worse effects on these young people. The project also looked at how shopping in today's day and age is more about experiences rather than the act of shopping itself, and how the retail environment is a space for social interactions to form relationships and cultivate a community. This led to the development of a design where these positive features that the retail environment provided can be used to design an experience to benefit these young people through helping them feel a part of a community, whilst redefining the future of retail.

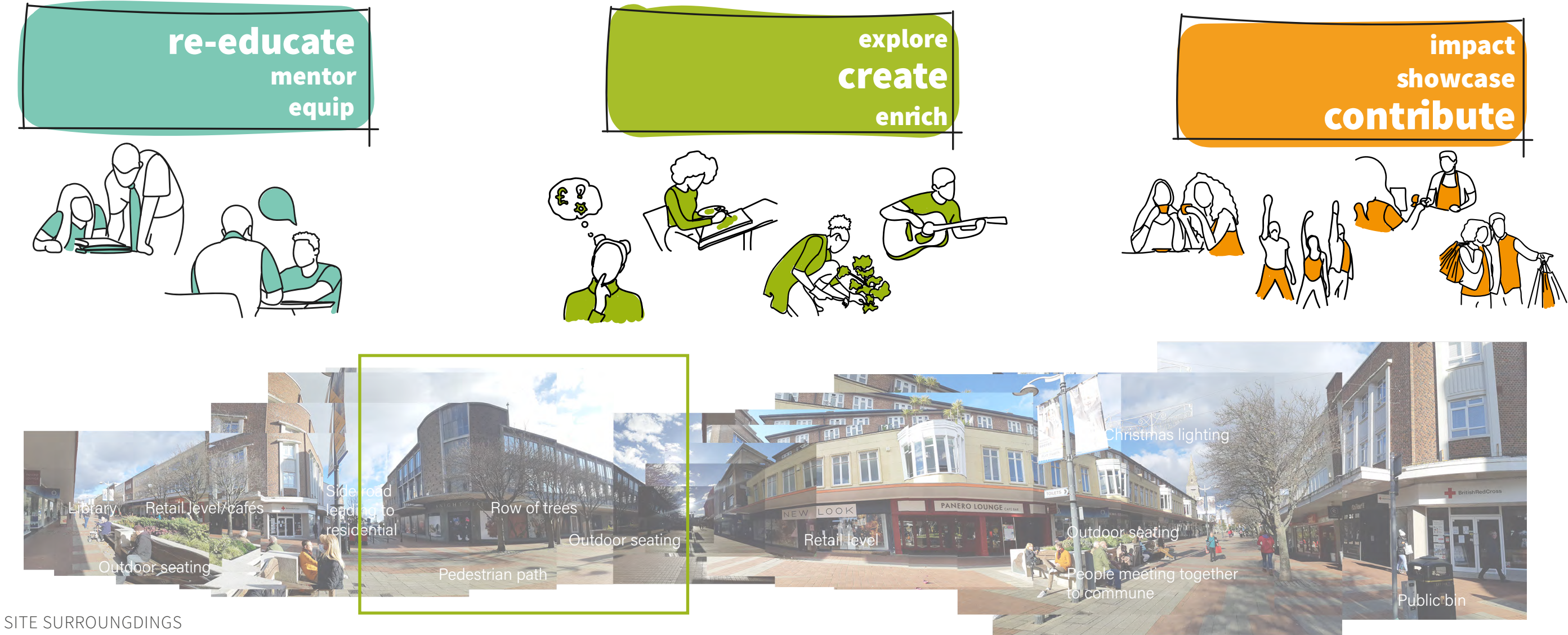
The centre provides academic classes, so that the young people have the opportunity to learn and gain basic qualifications. There are also mentoring sessions that will help with the youth's personal development and assist in their transition into the community. There will be various workshops where the young people can learn different skills, and be creative and active. Workshops include: Arts and crafts, Music, Performing Arts, Gardening, Enterprise. From these workshops, whatever they produce or learn are able to contribute back to the community, whether that be through producing products to be sold, running the shop kiosks, or organising performances and exhibitions.



YOUNG OFFENDERS CURRENT VS IDEAL EXPERIENCE COLLAGE



ATMOSPHERE IMAGE OF PERFORMANCE/SEATING AREA



SITE SURROUNDINGS

concept

narrative and development

In the development of the design, form and colour plays a major role. These two elements have driven the project to what it is. The concept narrative of this project is providing the building blocks for a better life for these young people. So from that the shape of cubes and blocks was a main form that was used to develop the design. This was very fitting as the building structure followed a very strict gridded form, but I also wanted to introduce a contrasting more organic form- the wave. The idea of having contrasting forms that were able to come together in harmony is what I wanted to achieve, as it related to the idea of these young people being ‘outsiders’ or ‘anomalies’ but are able to come together with the community to produce something beautiful.

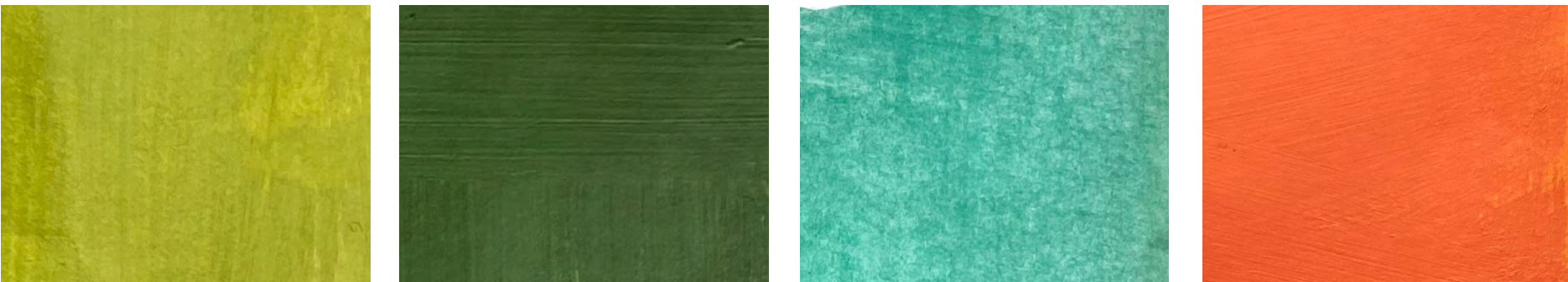
This concept of contrast is something that was also explored when looking at the materiality of this project. Through experimentation I explored the ways in which something that is existing can be presented in a new light. Concrete is one of the main existing materials of the Knight and Lee building. As you can see below, through introducing a new and colourful material of the ribbon embedded into the concrete, it presents the material to be more visually appealing. I have chosen to use the ribbon as I believe it relates to the wave form I have introduced in my other experiements.



Colour collages exploring how different colours work together and what atmospheres they create. This also looks at the combination of geometric and organic shapes to create a unified form



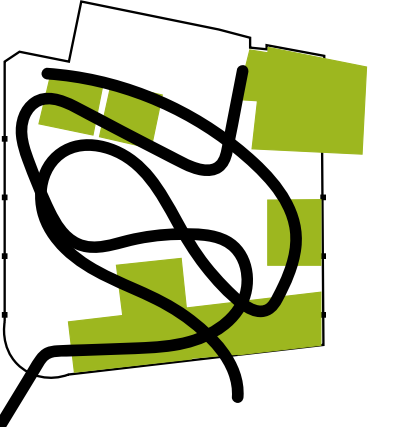
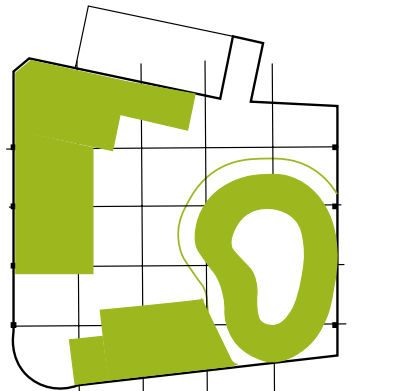
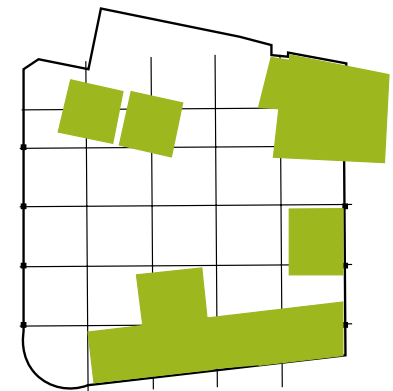
Using the grid formation of the windows of Knight and Lee, these colour collages look at the movemenof the wave amongst the block shapes. The arrangement of the third image was created through following the wave form.



The previous collages helped narrow down the colour palette chosen for this project.



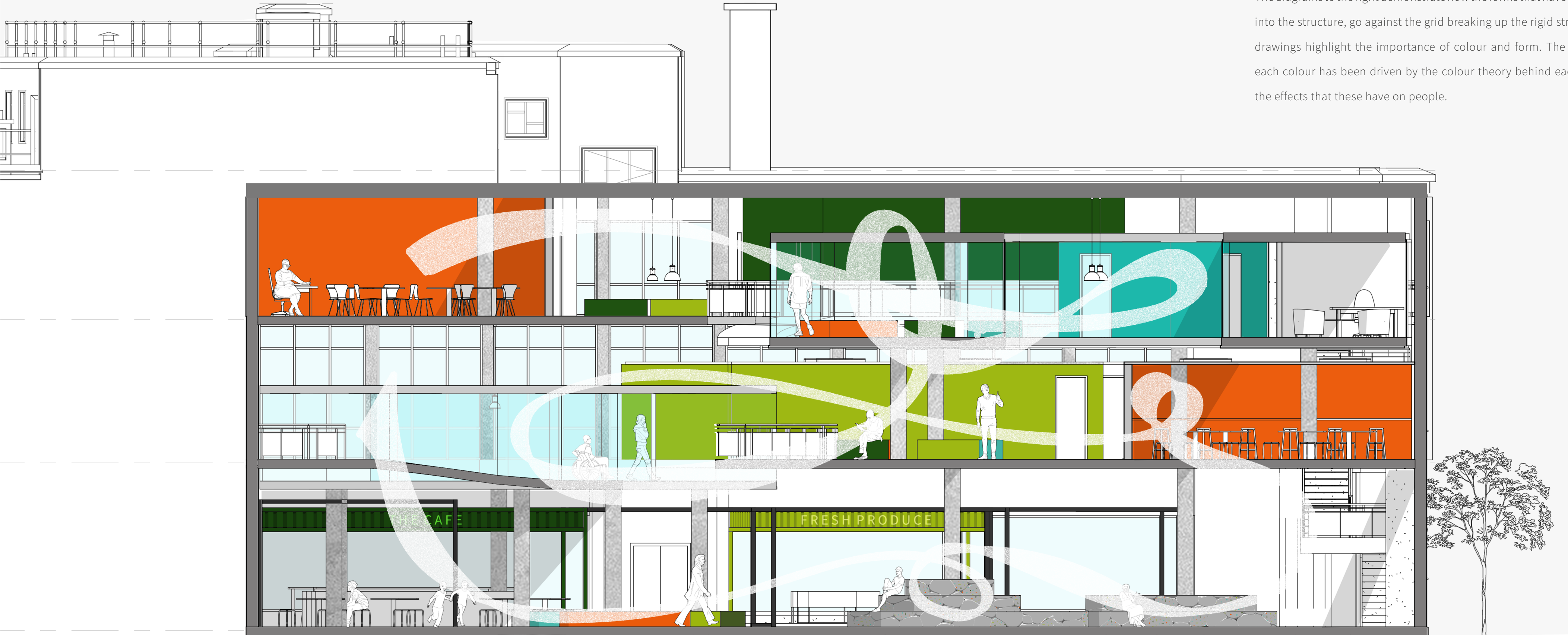
This drawing resembles a section which has influenced the structure of the design. I wanted to create a space that had different areas that all linked together, either through movement or purpose.



These diagrams explain how the wave form takes the role of fluidity and movement within the space amongst the geometric forms

design

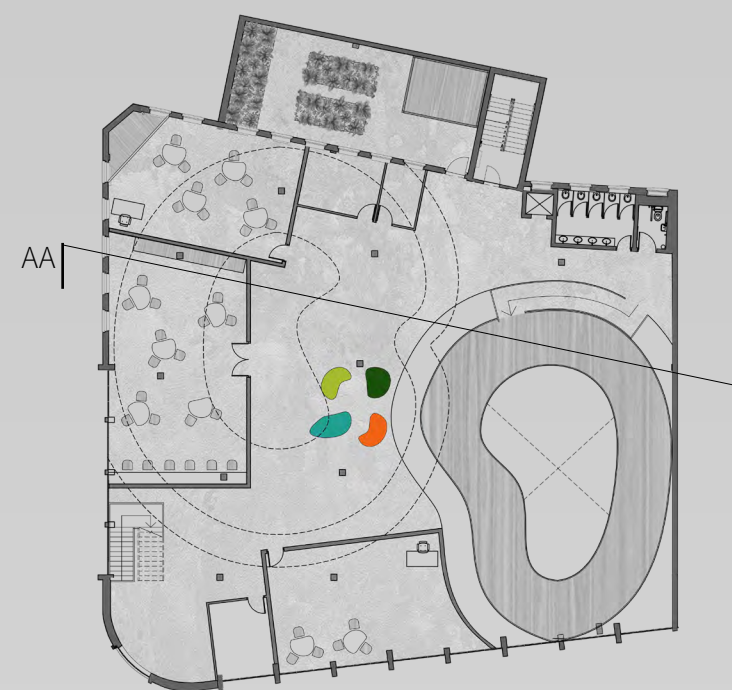
The diagrams to the right demonstrate how the forms that have been introduced into the structure, go against the grid breaking up the rigid structure. These drawings highlight the importance of colour and form. The placement of each colour has been driven by the colour theory behind each colour and the effects that these have on people.



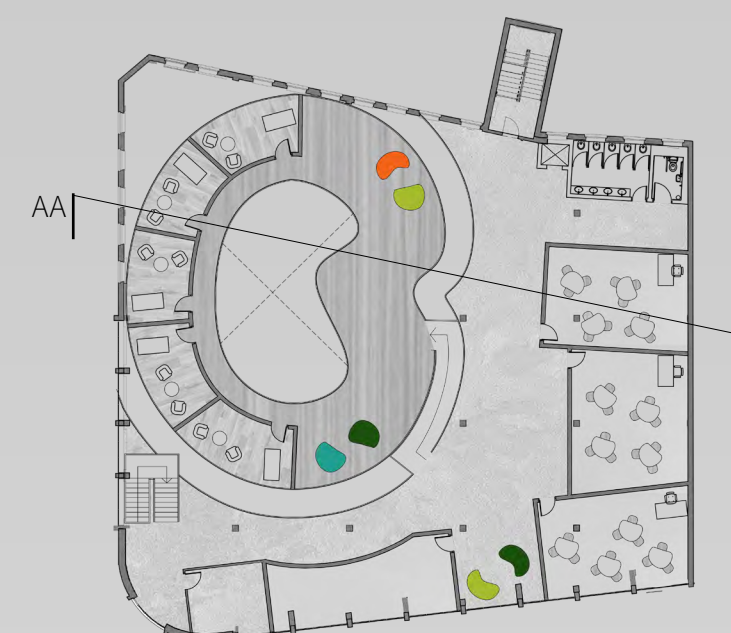
SECTION A-A



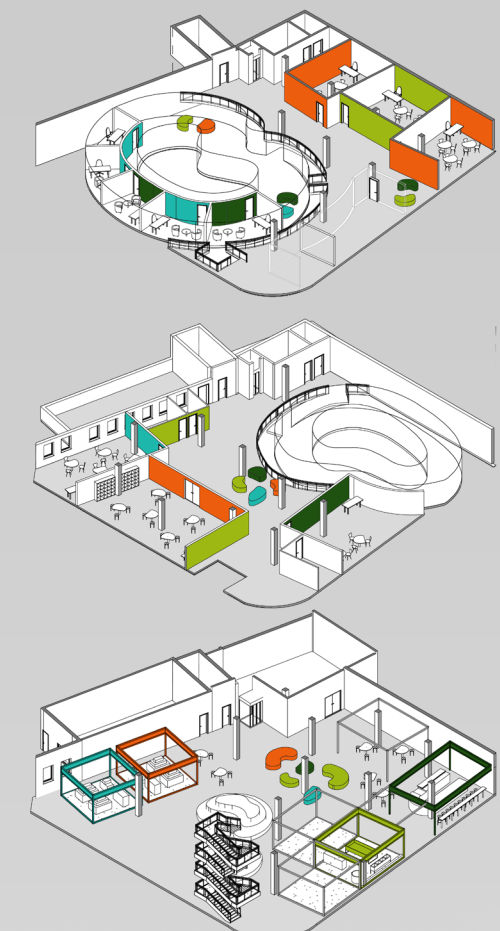
GROUND FLOOR PLAN



FIRST FLOOR PLAN



SECOND FLOOR PLAN

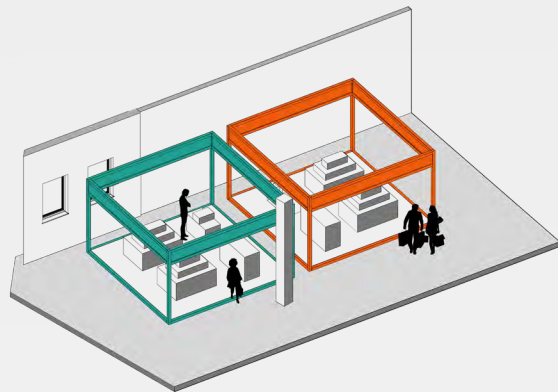


EXPLODED AXONOMETRIC

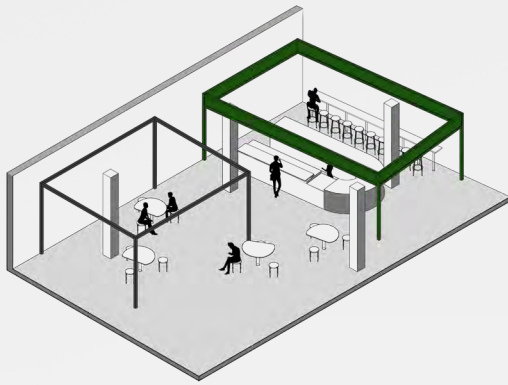


GROUND FLOOR VIEW FROM SECOND ENTRANCE

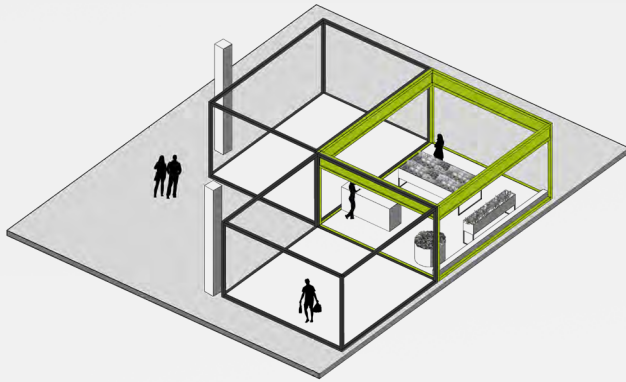
VIEW WITHIN MEZZANINE ON SECOND FLOOR



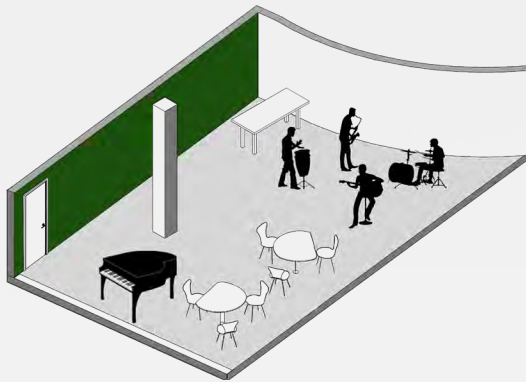
ARTS AND CRAFTS KIOSKS



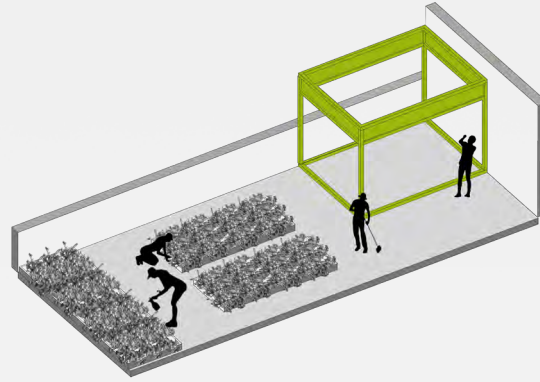
CAFE



FRESH PRODUCE KIOSK



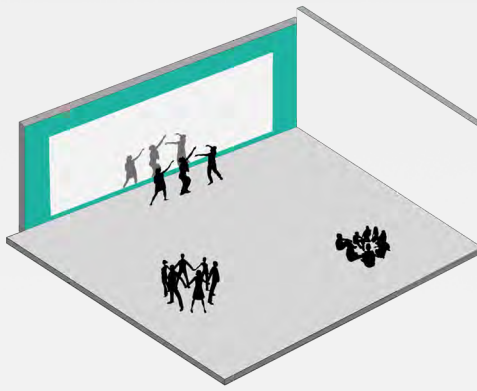
MUSIC WORKSHOP



ROOF GARDEN



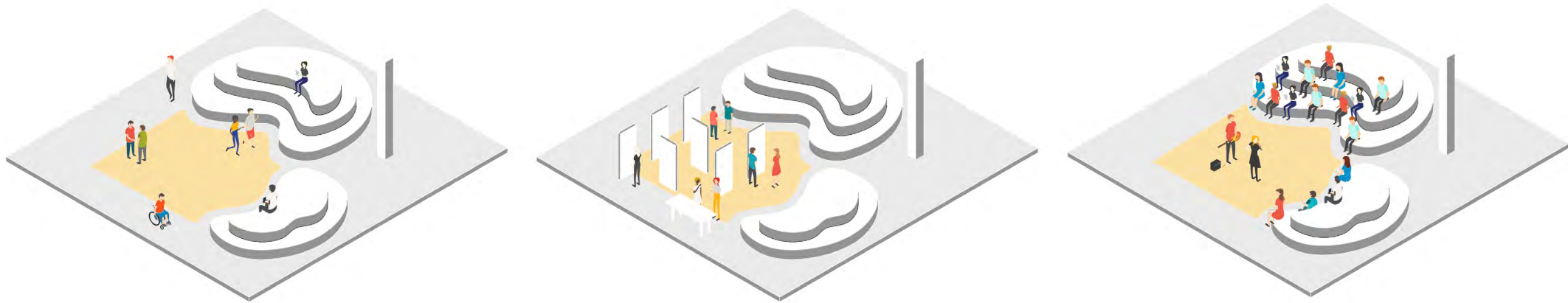
ARTS AND TEXTILES WORKSHOP



PERFORMING ARTS



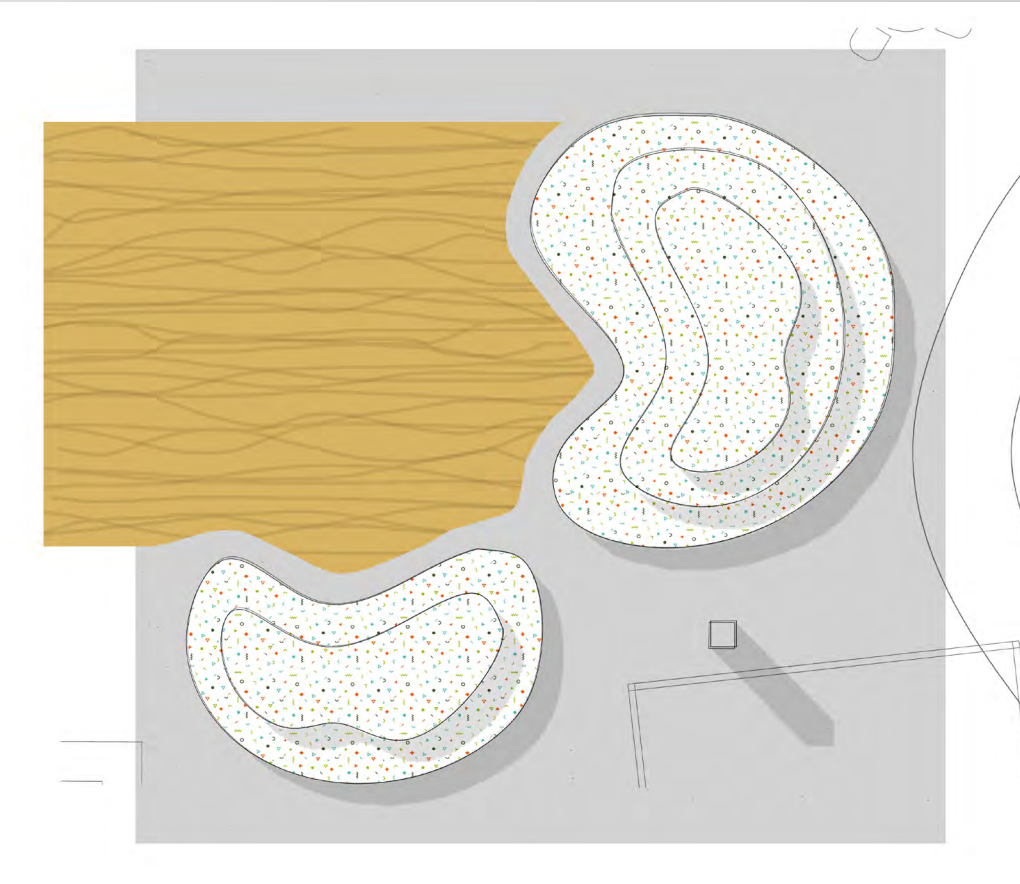
GROUND FLOOR VIEW



Above are some axonometric scenes of the performance/seating area on the ground floor of the design. This multi-use space can be used for communal sitting, exhibitions, and performances.



ELEVATION OF PERFORMANCE/SEATING AREA



PLAN OF PERFORMANCE/SEATING AREA



HAND CRAFTED MODEL OF A SELECTED AREA OF THE GROUND FLOOR