

THE SHARED PATH

The Shared Path is more than a wellness hostel - it's a thoughtfully designed sanctuary rooted in connection, community, and holistic renewal. Believing that architecture can inspire human connection, the space invites openness and belonging from the moment you arrive.

Its layout encourages natural movement and interaction, with flowing lines, organic materials, and open sight lines creating a grounding yet uplifting atmosphere. Every element - from sculptural, continuous furniture to timber beams guiding the eye - is crafted to foster emotional and physical connection.

At its heart lies a central social atrium, a space for both spontaneous gatherings and quiet reflection. More than aesthetics, The Shared Path is a quiet invitation to pause, connect, and walk alongside others toward collective renewal.

This project takes place within the existing site, St Georges Building, 141 High Street, Portsmouth. Tasked with re-imagining the space a hostel, including co-working space, the following pages showcase my project proposal.

PRIMARY USERS

YOUNG ADULTS, 18-35

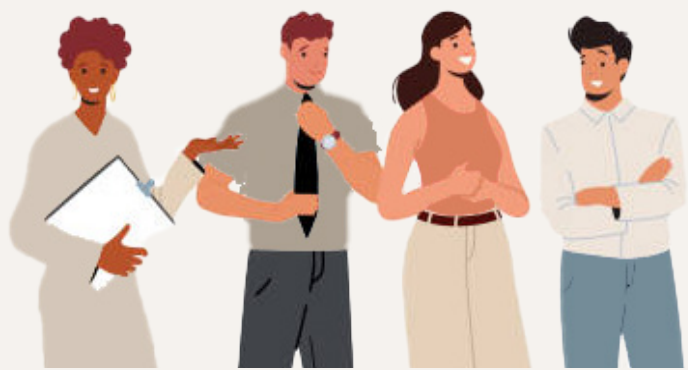


The primary users of the shared path will be young adults aged 18-35, whether they are students or members of the general public. From the space they will be looking for short-term accommodation, co-working spaces and areas for socialising

They look for flexible spaces for work and leisure whilst seeking social engagement. They prefer modern and adaptive spaces with a balance of community living and privacy options. They value affordability and convenience.

SECONDARY USERS

UNIVERSITY STAFF & RESEARCHERS



Secondary users include University staff and Researchers as well as any potential event attendees and city visitors University staff and researchers may be looking for temporary accommodation whilst on campus. In addition to this they will seek a quiet a productive workspace

Event attendees will more than likely be members of the general public so will benefit from publicly accessible areas and amenities. These public spaces will act as a connection between the private areas of the hostel and the city

PROSPECTIVE STUDENTS & PARENTS

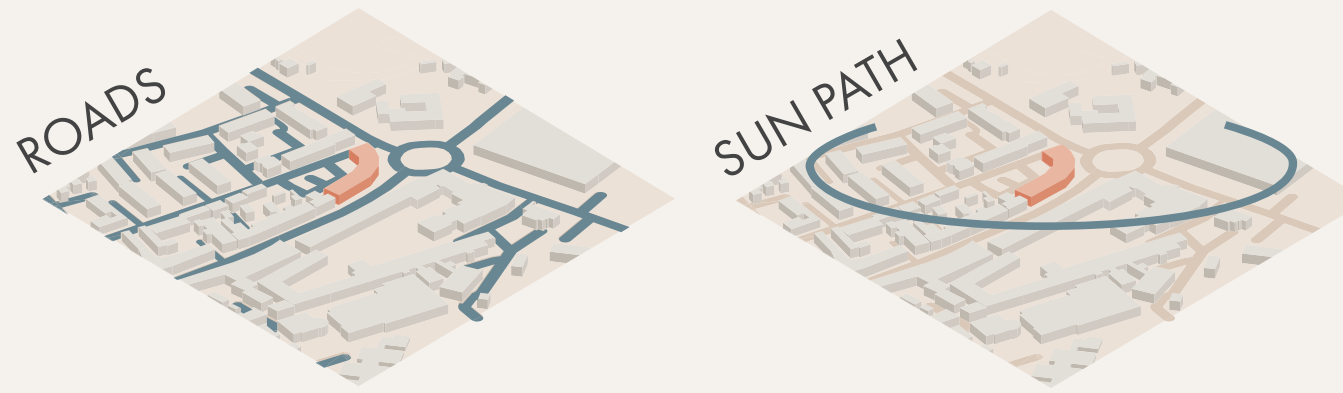


An additional side to secondary users are prospective students are there parents. These are people who will be briefly visiting the city, to view open days or other such events

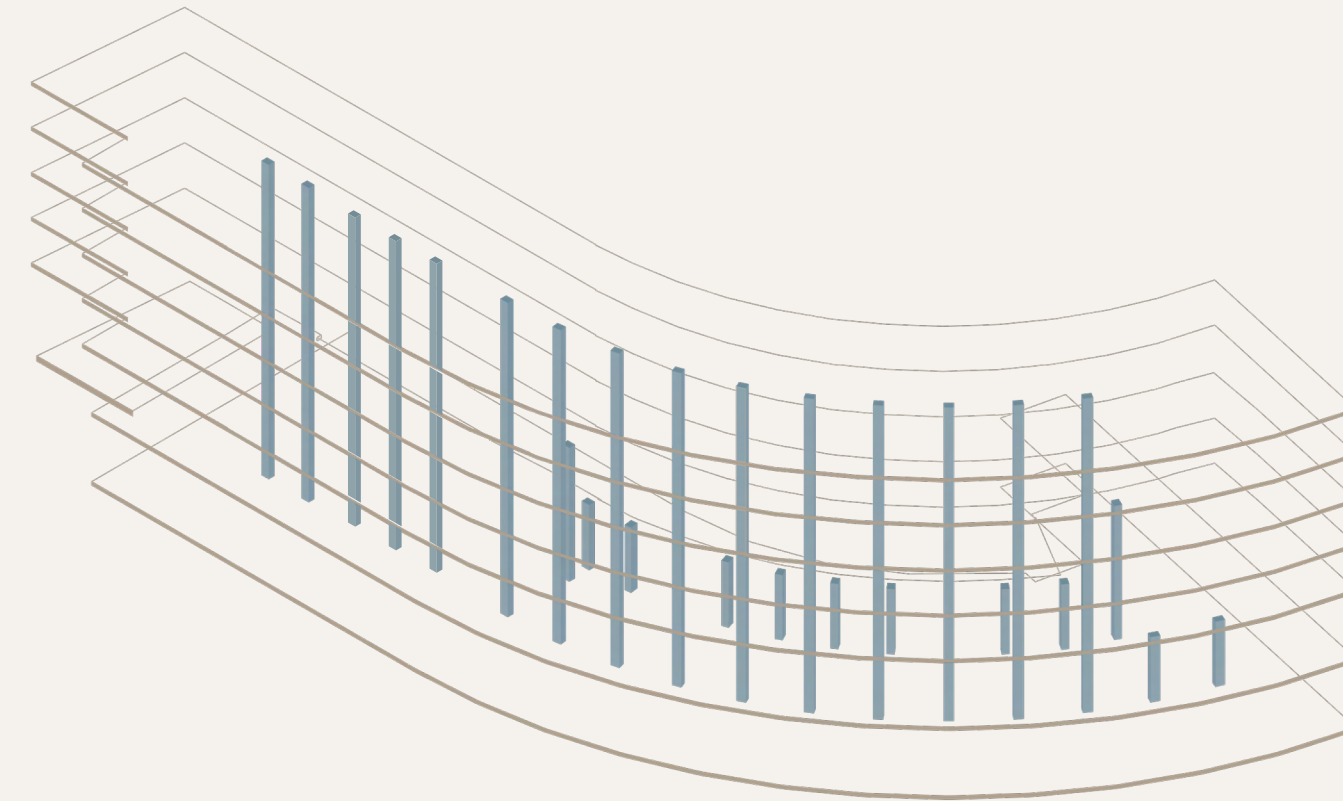
They will require short term stays within a space that showcases the Universities modern and innovative approach

During the evenings they may look for spaces to socialise that displays the community and overall feel of the city.

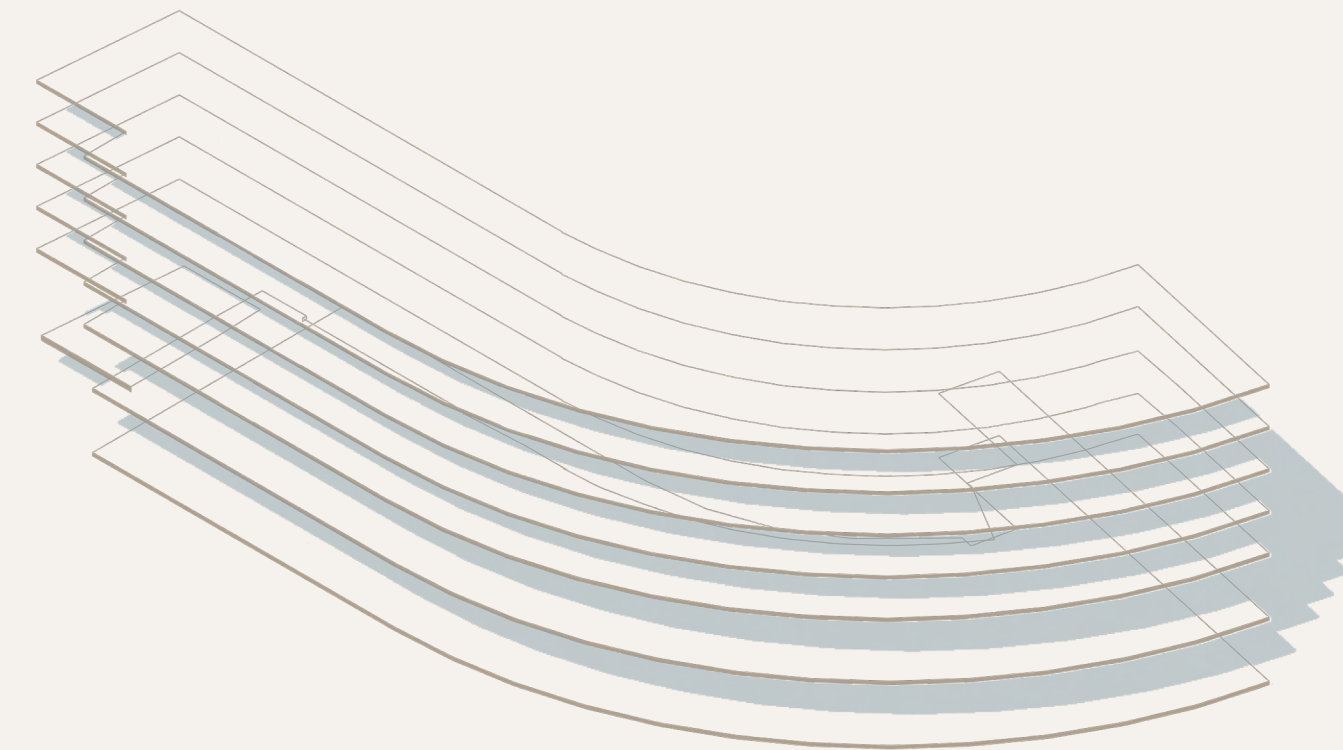
EXISTING SITE



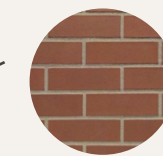
STRUCTURE



NATURAL LIGHT



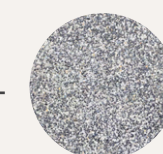
SITE MATERIALS



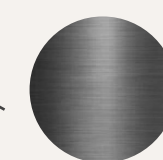
RED ENGINEERED BRICK
Durable, load-bearing



GLASS
Likely double-glazed for insulation and noise reduction

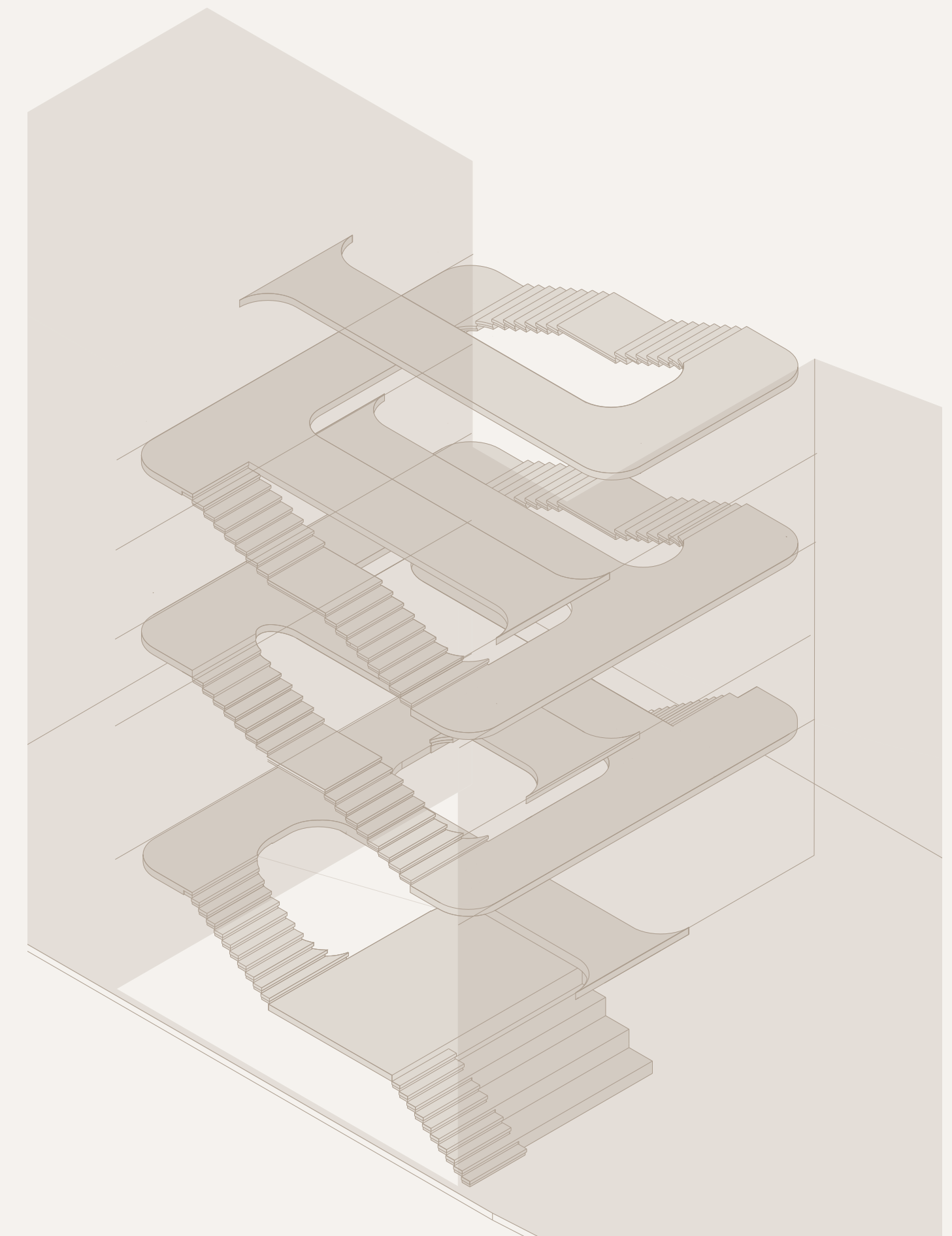


EXPOSED AGGREGATE CONCRETE
Adds texture and visual separation

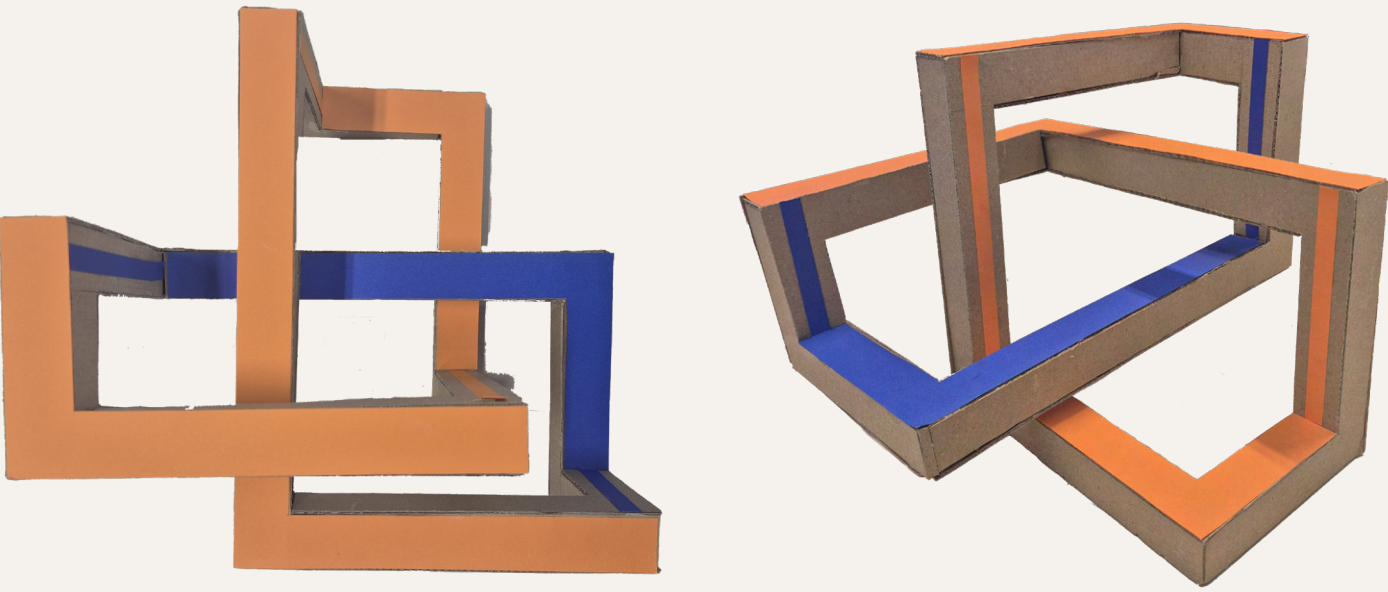


STEEL
Frames window and protects structural frame.

ATRIUM DESIGN - HEART OF THE BUILDING



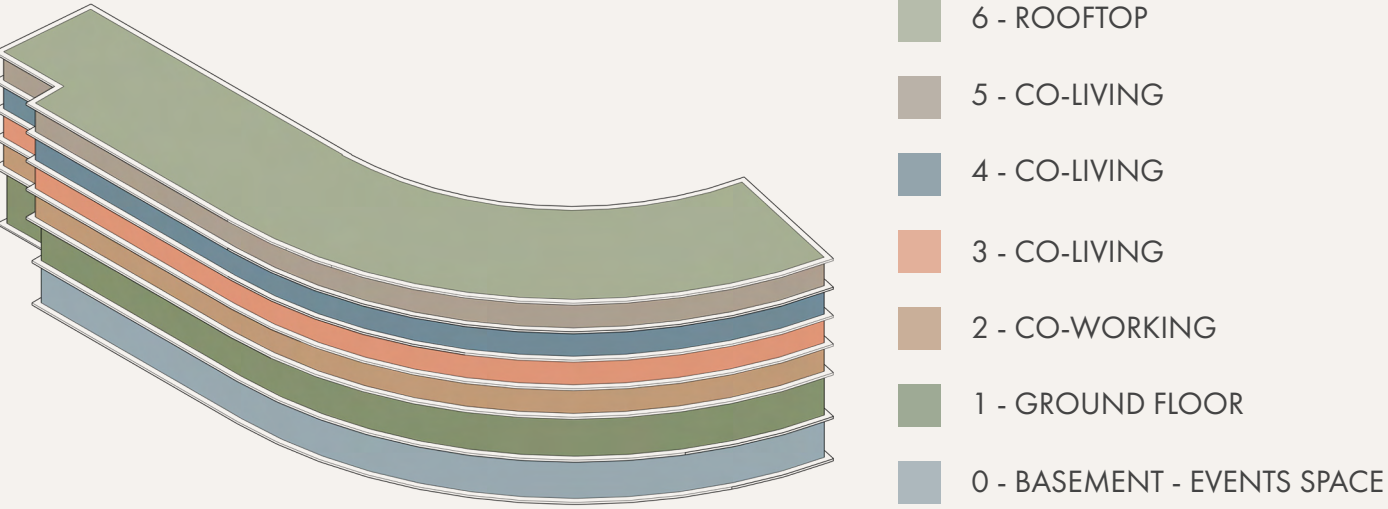
CONCEPT MODELS



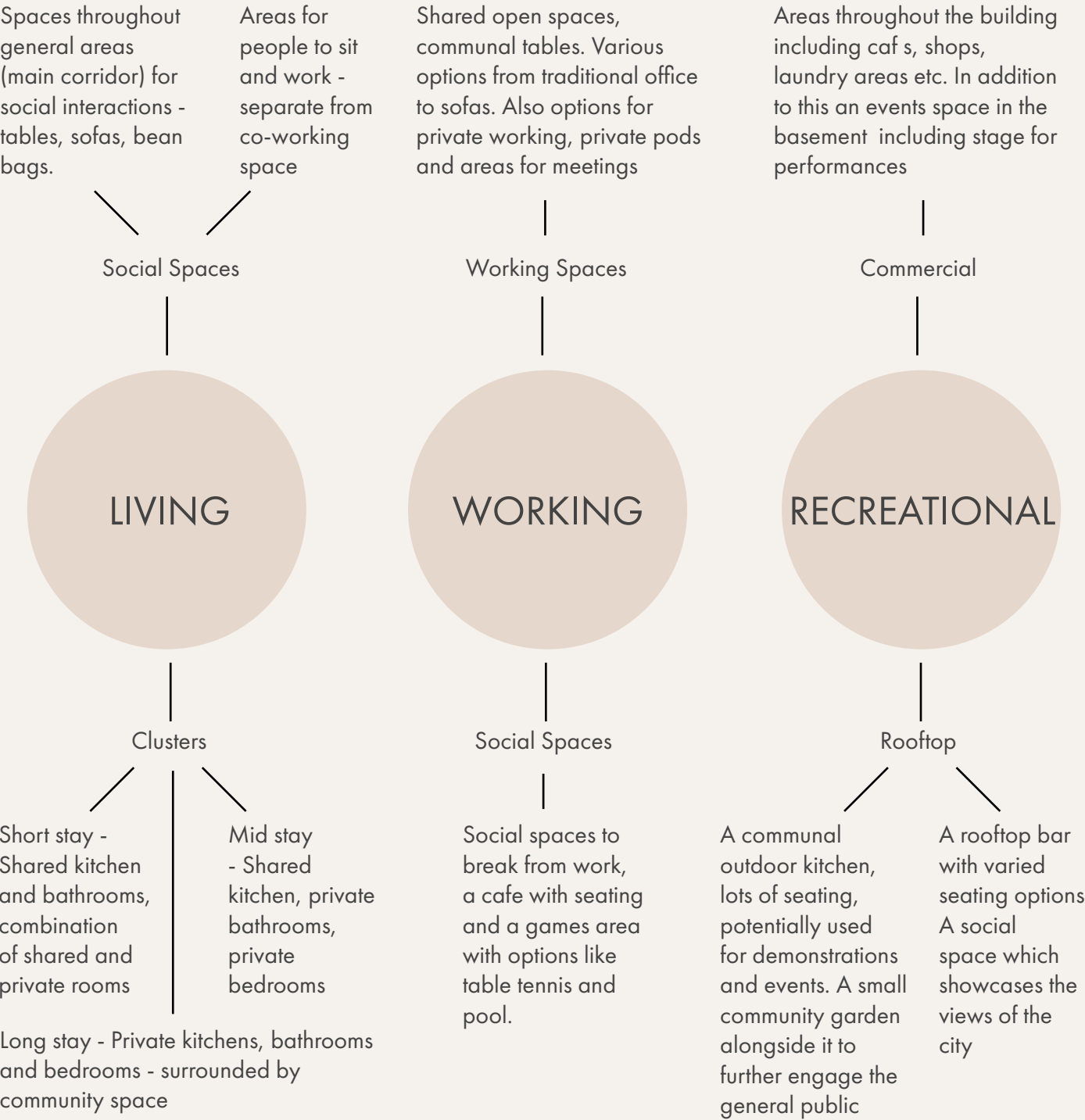
TOP VIEW

ISO VIEW

BUILDING STRATEGY



BUILDING USAGE



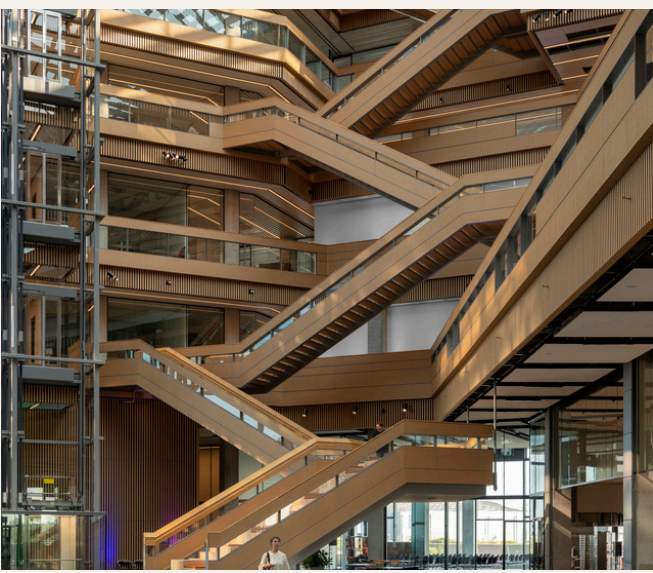
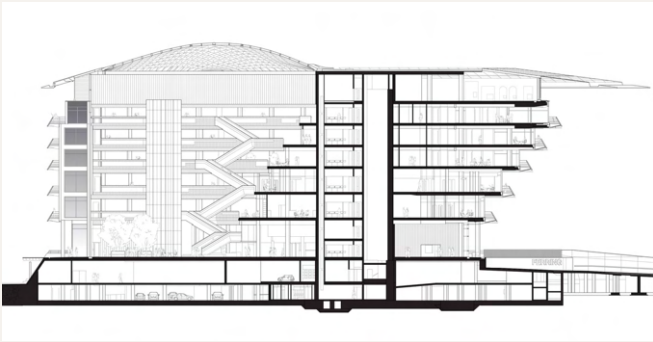
RESEARCH
FERRING PHARMACEUTICALS

FOSTERS + PARTNERS - 2022

The Ferring Pharmaceuticals building stands at the western end on Oresmund Bridge, connecting Sweden and Denmark.

With approximately 37,000 m2 of gross floor area the building stands at nearly 40m tall

The atrium which stretches the entire height of the building acts as a shared centre for all activity.



The edges of the atrium have been designed to be used flexibly. Staff can easily reconfigure these spaces, by moving seating and tables.

I'm inspired by this designs sense of openness, it will heavily influence my atrium design, as well as this I will take inspiration from the weaving stair design itself - viewing it more as a sculptural piece rather than just a functional aspect.

ROOTS IN THE SKY

STUDIO RHE - 2027

To be completed in 2027, Roots in the Sky will be the first London office to deliver a rooftop urban forest spanning 1.4 acres, with extensive access for local community and general public.

It will offer community gardens and a dedicated community barn in the most commercially valuable space in the development. In addition to this office spaces and rooftop bar.



JESSICA HOLDER



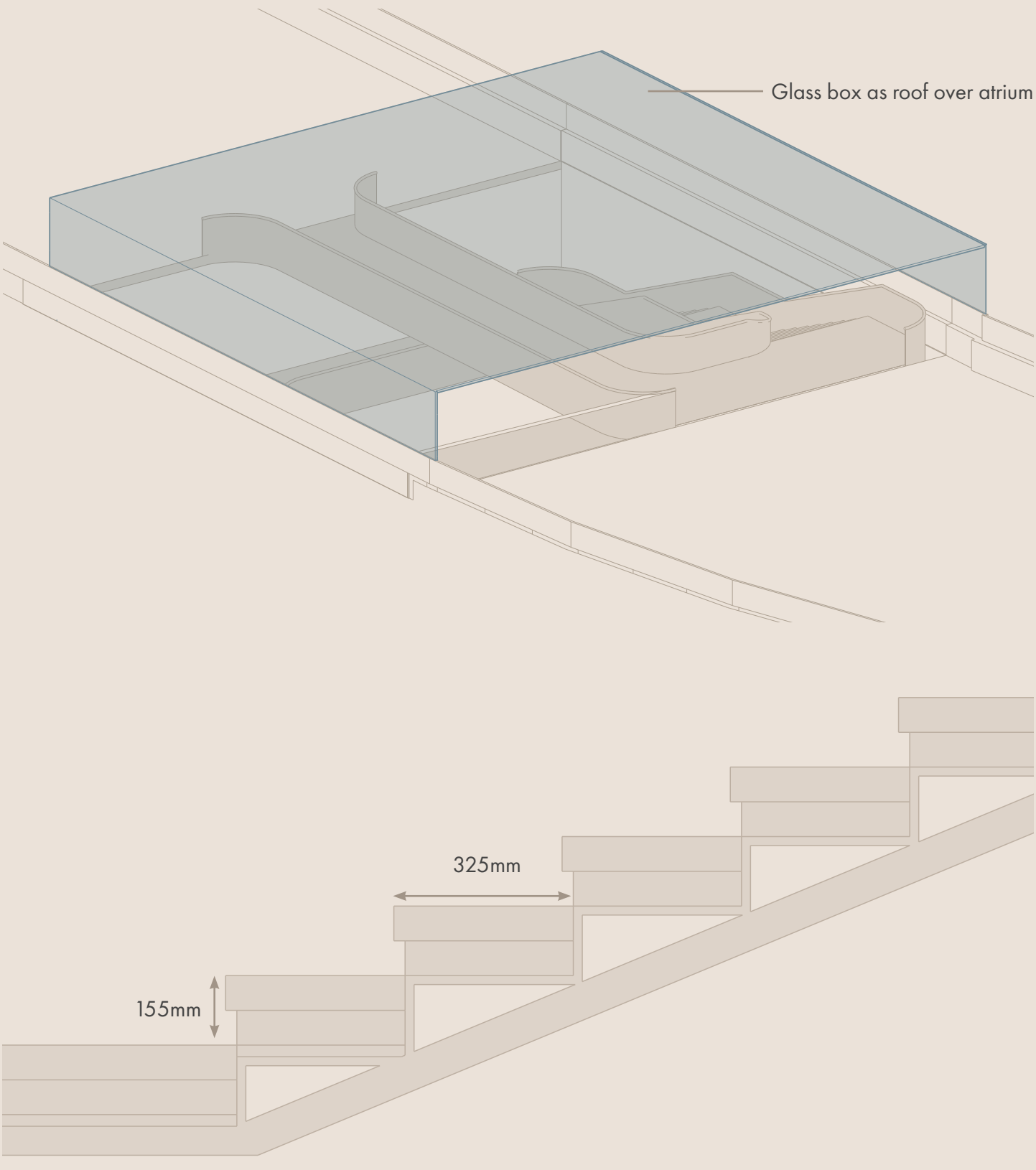
'The vision for roots in the sky is for a modern workplace that actively engages with its local surroundings'

This buildings drive for that community feel is something I want to be able to replicate in my design - the idea that working and living can work harmoniously together throughout one space.

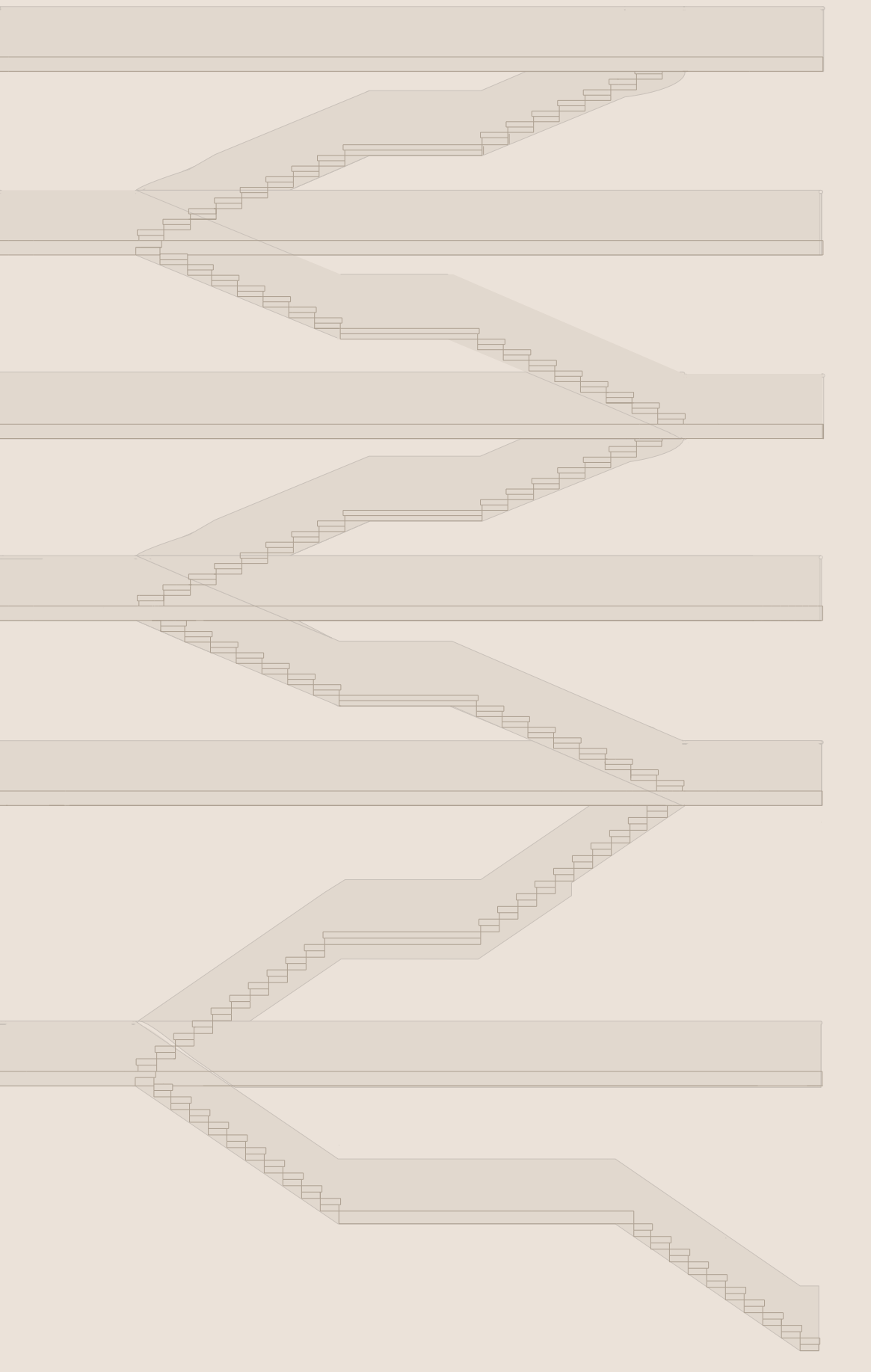
STAIR DESIGN

This building centres around a soaring atrium with winding stairs that connect every level - designed to foster community, encourage interaction, and bring people together through movement and shared space.

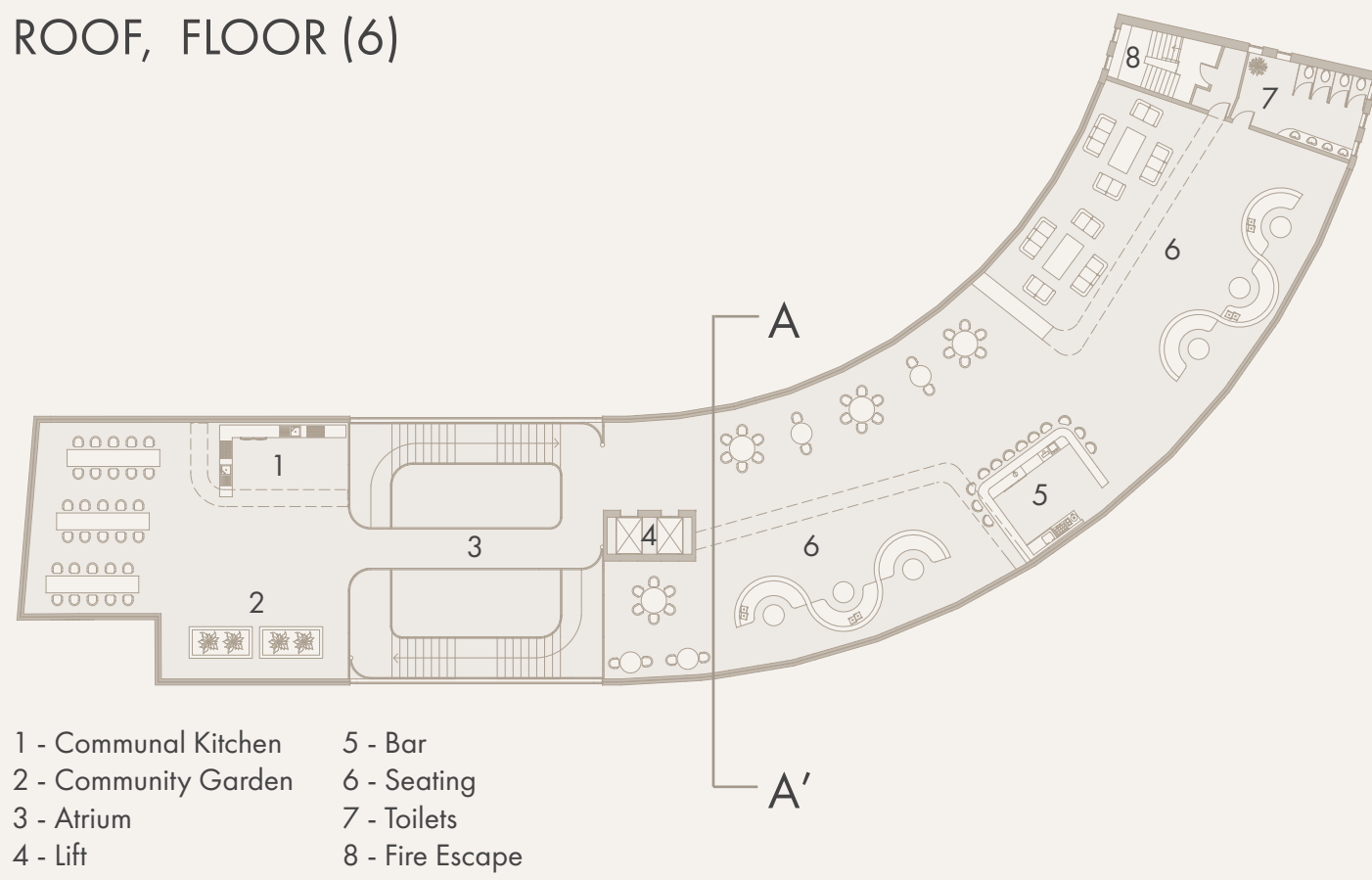
ROOF



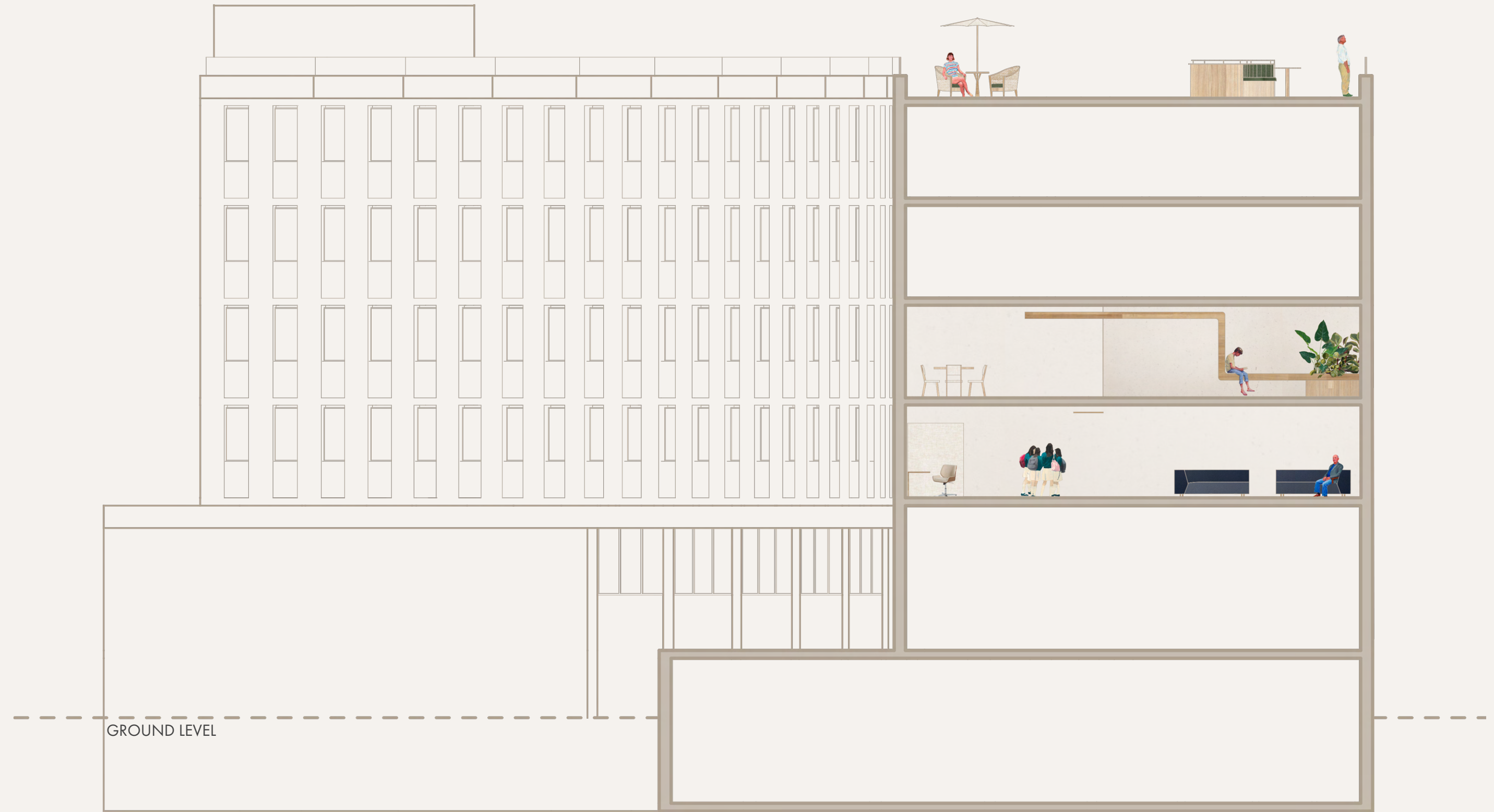
ELEVATION



ROOF, FLOOR (6)



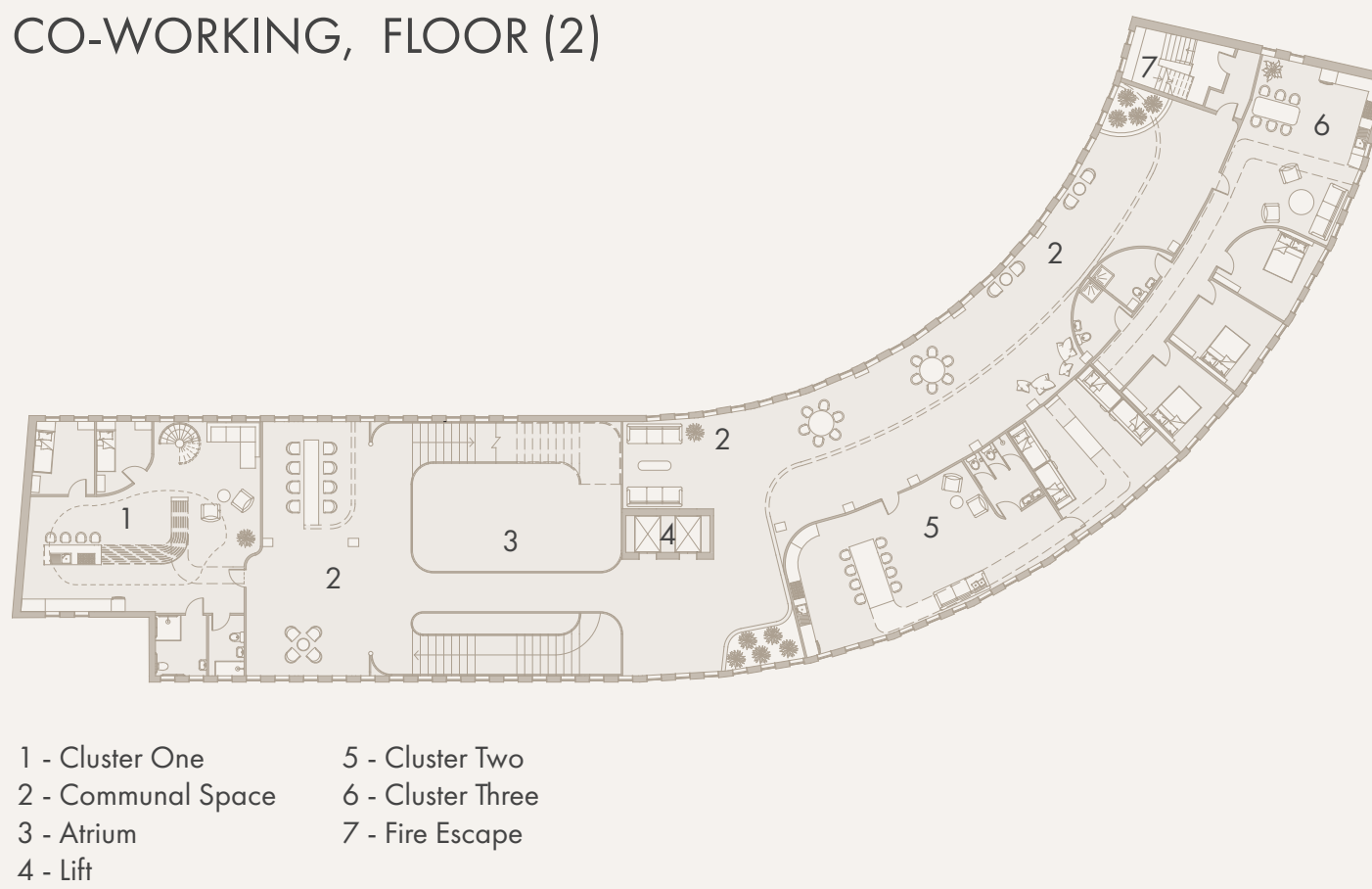
SECTION A-A'



CO-LIVING, FLOOR (3)



CO-WORKING, FLOOR (2)



VISUAL OF ROOF



VISUAL OF CO-WORKING



CLUSTER ONE

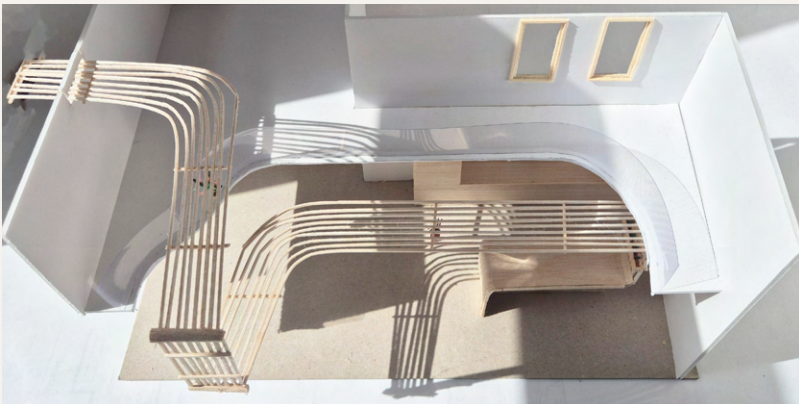
A predominant focus in the project is 'Cluster one'. A self sufficient cluster of rooms located on floor 3 - co-living.

VISUAL OF CLUSTER ONE

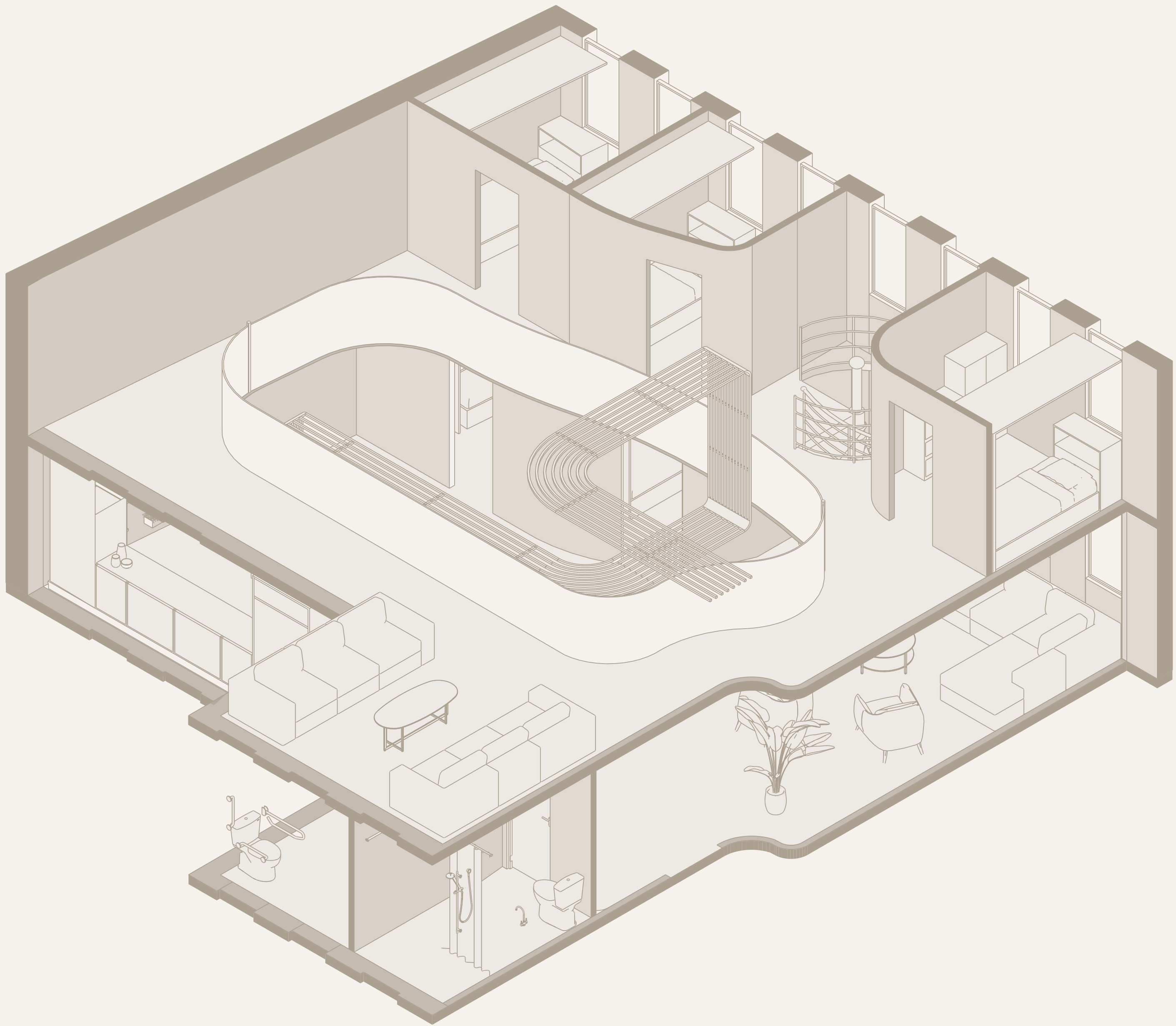


1:25 MODEL

This 1:25 model showcases my bespoke timber sculpture that flows through cluster one. To enhance my model I further edited it in photoshop to help provide a sense of atmosphere within the physical space.

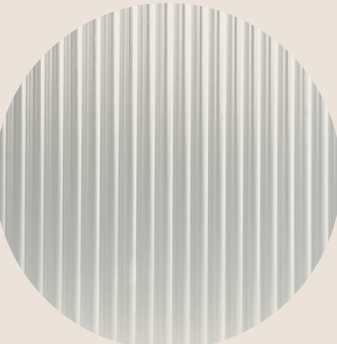


CLUSTER ONE AXONOMETRIC





TIMBER



GLASS



STEEL



LINENS



STONE

VISUAL OF ATRIUM