

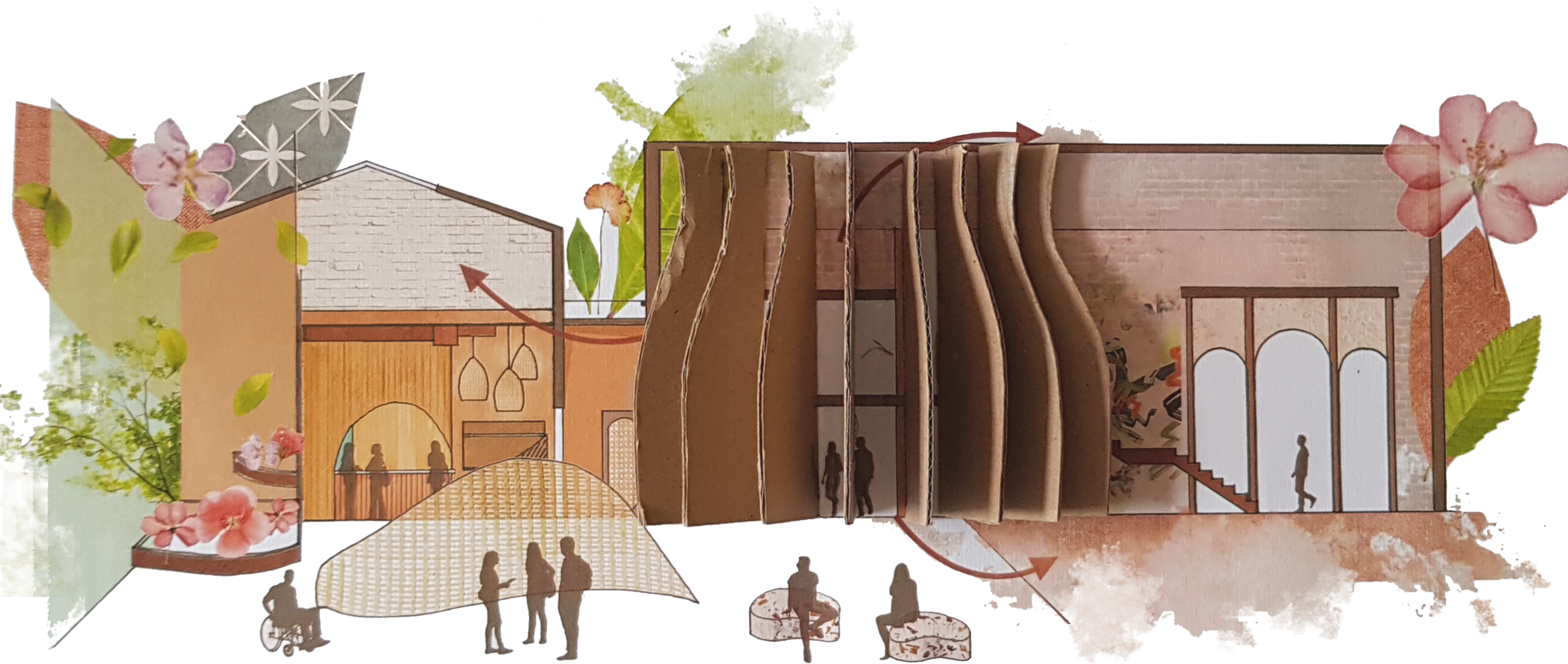
Rootstock to Reconnect

Rootstock is designed to reconnect people from the Portsmouth community with their environment through handcrafting of pottery, gardening and enjoying local produce.



Sustainable Outlook

Rootstock has a responsibility to protect environment and to help people reconnect. **Reuse, sustainable materials and waste reduction** are the core of this proposal.



Hybrid Model and Hand Drawn Section

Lost Connection

In modern society, people can become distanced from their physical environment as day to day tasks are digitalised and automated.





Existing East Elevation Hybrid Drawing



Bishop Street, Portsmouth

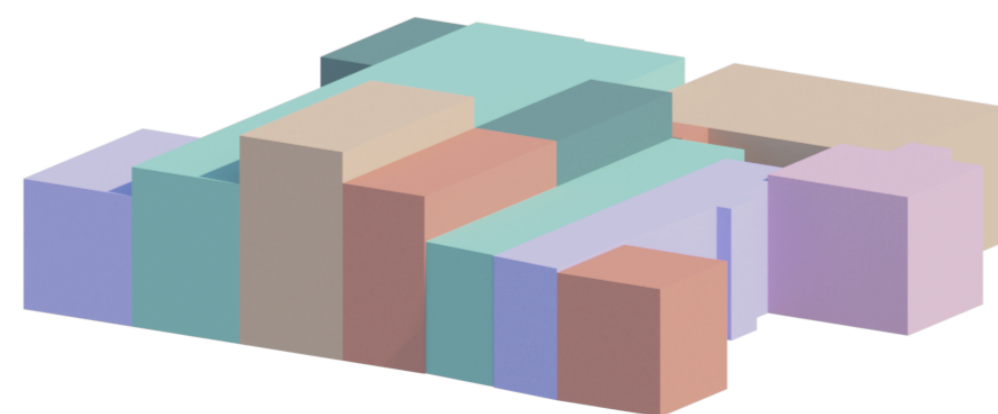
Recycling and Conservation

The existing site contains artifacts which would be reclaimed for the new design; retaining building character and using reusing materials sustainably.



Existing Site

Treadgolds was originally a forge which expanded as a business into the surrounding houses, creating a unique site with a grade II listing. A conservation approach has been considered to maintain the historic character of the building.



Mass Diagram: Existing Site



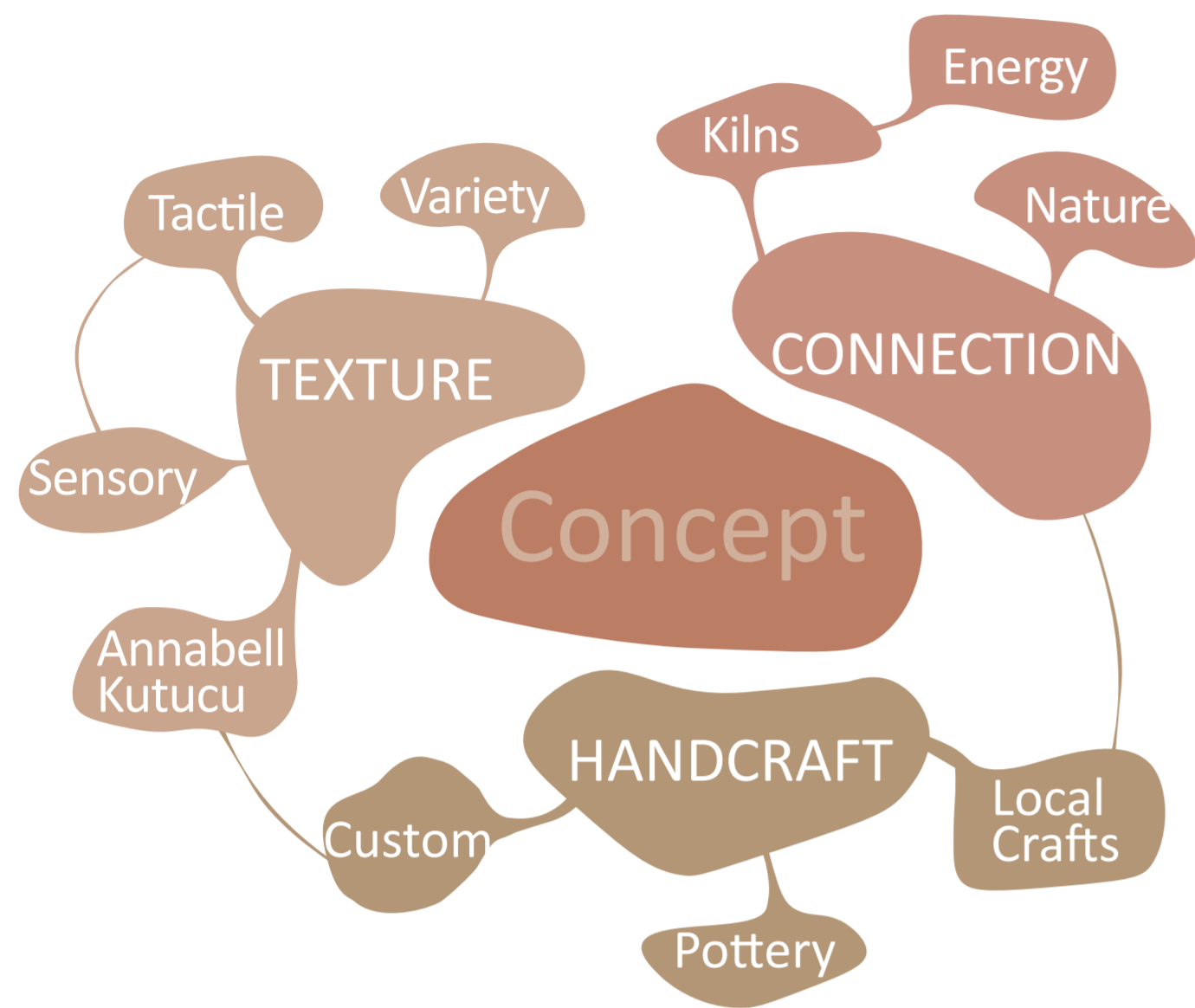
Handcrafted Collages: Industrial Atmosphere of Historic Forge



Story of Importation of Iron Goods In Portsmouth



Digital Collage: Combining existing atmosphere with vibrancy of Rootstock



Energy Cycle

Waste heat energy produced by the kilns is harnessed to produce electrical energy to power Rootstock using a Rankine production process.



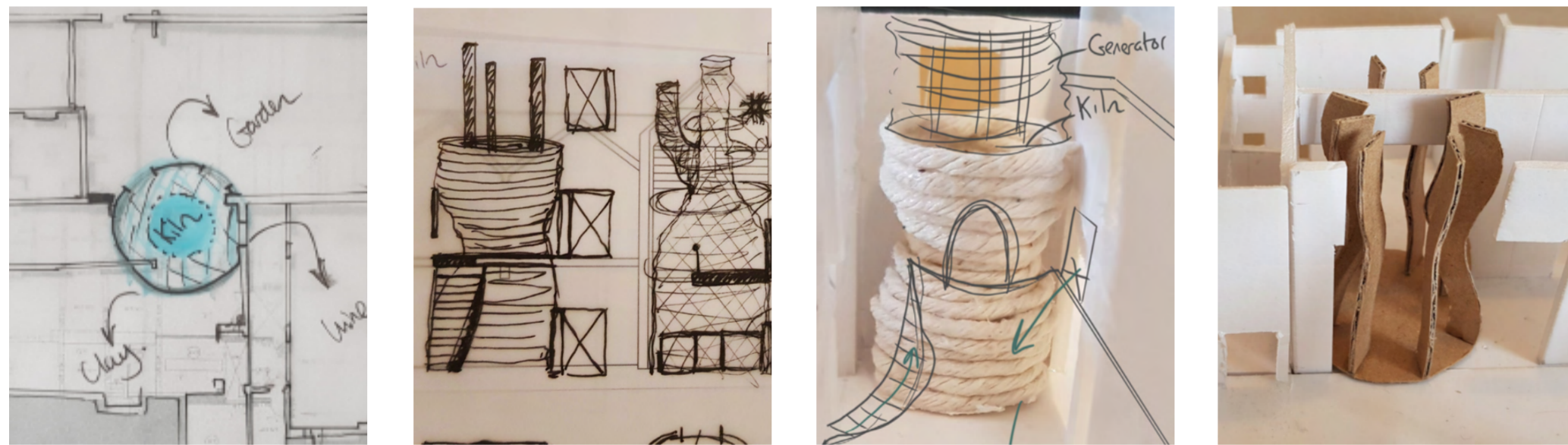
Clay Workshop



Garden

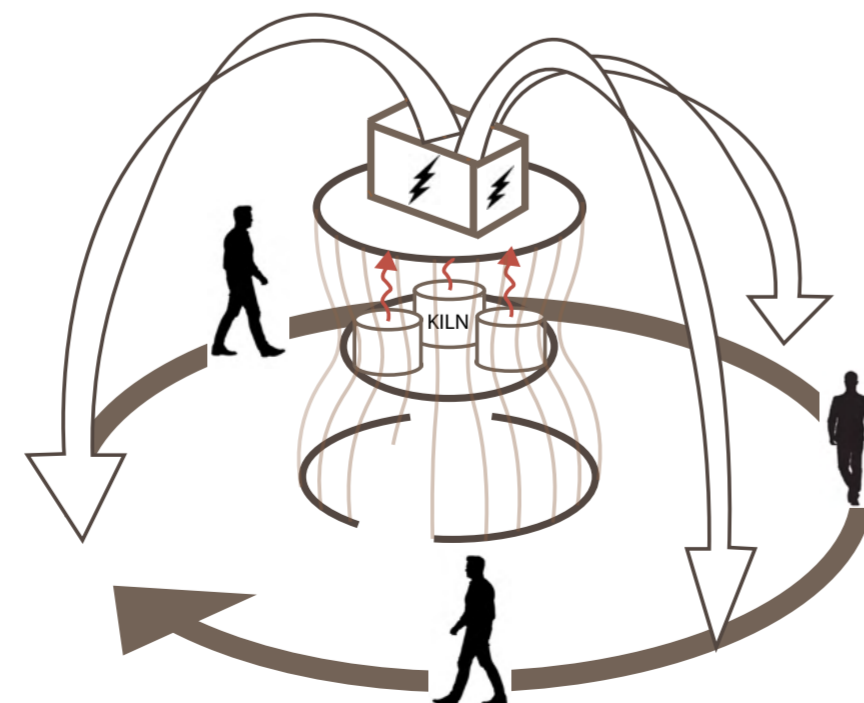


Wine Bar



Design Concept

The design scheme is based around the act of making with clay, taking inspiration from clay tones, pottery shapes and processing. The heart of the building is the kilns which sit inside a central vase shaped bamboo shell connecting all spaces.

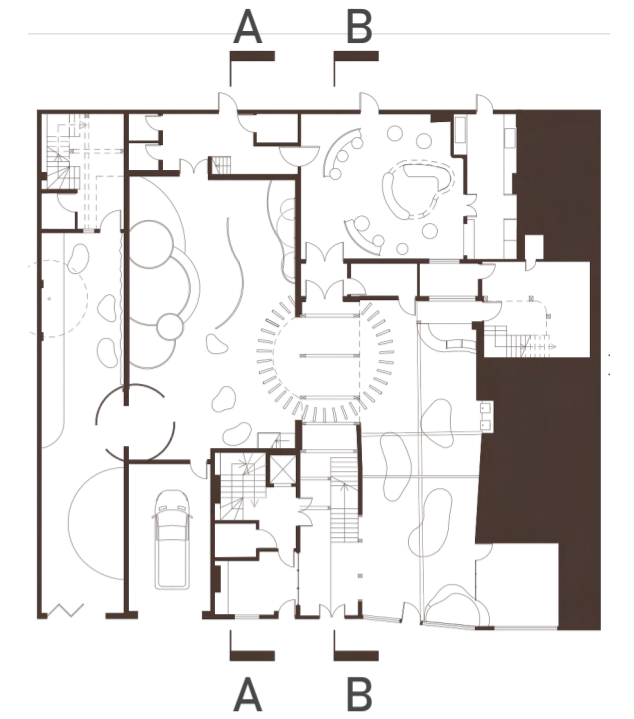




Section AA



Ground Floor Plan



Section BB



First Floor Plan

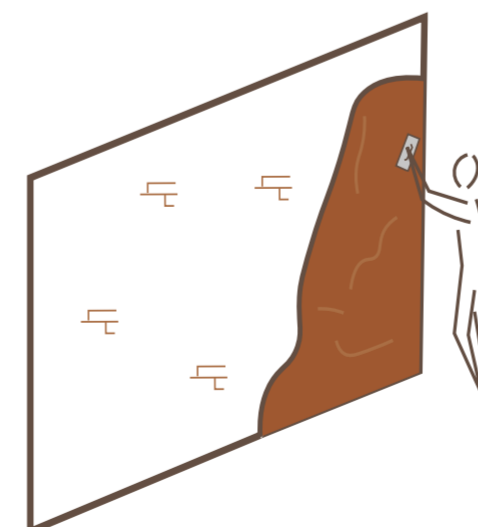
- Area Key
- | | |
|------------------|-----------------|
| 1 Reception | Garden |
| 2 Clay | 13 WC's |
| 3 Reception | 14 Garden Store |
| 4 Clay | 15 Kiln Hub |
| 5 Shop | 16 Studios |
| 6 Clay Store | |
| 7 Wine Bar | |
| 8 Kitchen | |
| 9 Staff Area | |
| 10 Vehicle Store | |
| 11 Garden | |
| 12 Indoor | |

Design Realisation

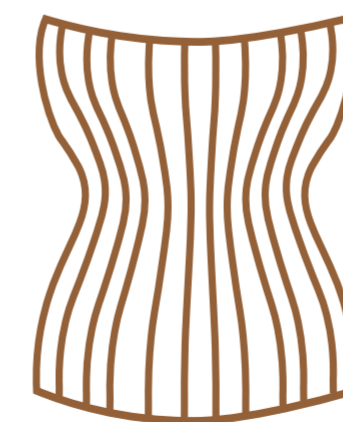
An inclusive and vibrant place for people to connect: Rootstock is designed to create a new and welcoming community environment with consideration to maintaining historic features of the existing.



Mycelium



Clay



Bamboo

Material Choices

Materials encourage the reconnection with the environment as they are **natural, sustainable and hand-crafted.**



Garden Rendered View



Wine Bar Rendered View



Hybrid Perspective Drawing



Contrast of New and Existing: Models and Material Assemblage

Design Realisation

The project was realised through experimental concept development in collaging, modelling with found materials and handcrafting, as would be found in the design of Rootstock.