

PROJECT INTRODUCTION



THE DESIGN BRIEF

This design brief aims to reverse the **negative effects** on our society due to the pandemic. Focusing on 3 main areas in which this space can **improve the quality of:**

- in-person **community support**,
- supporting the **Performing Arts**
- Supporting families of school children unable to provide **substantial meals, after school care and educational support.**

Knight and Lee,
Southsea,
PO5 3QG



HUMAN CENTERED

DESIGN

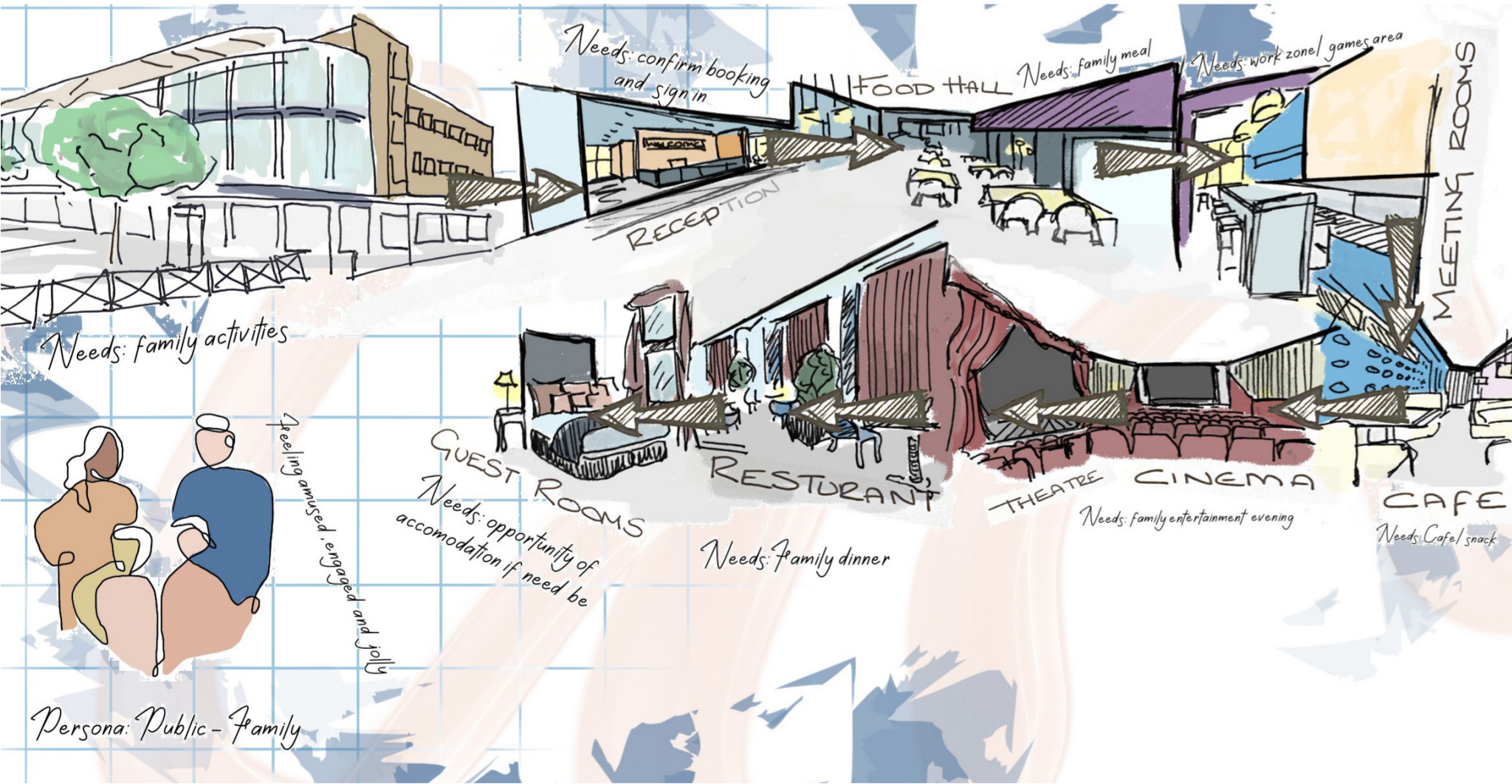
Creating a community space offering a sense of **“retreat”** This centre combines the community and arts to create a **safe** and exciting environment for **development and support** for all visitors.



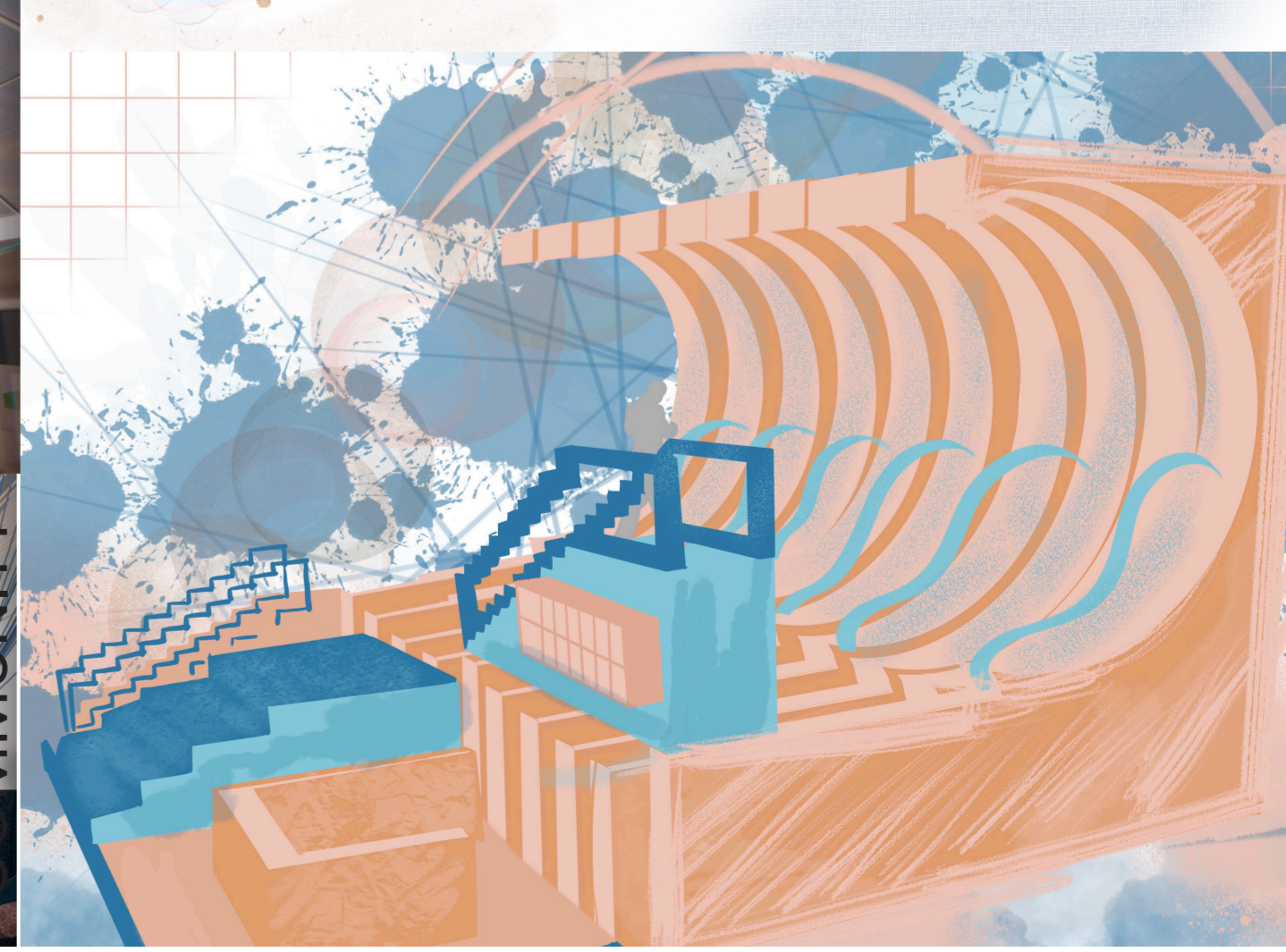
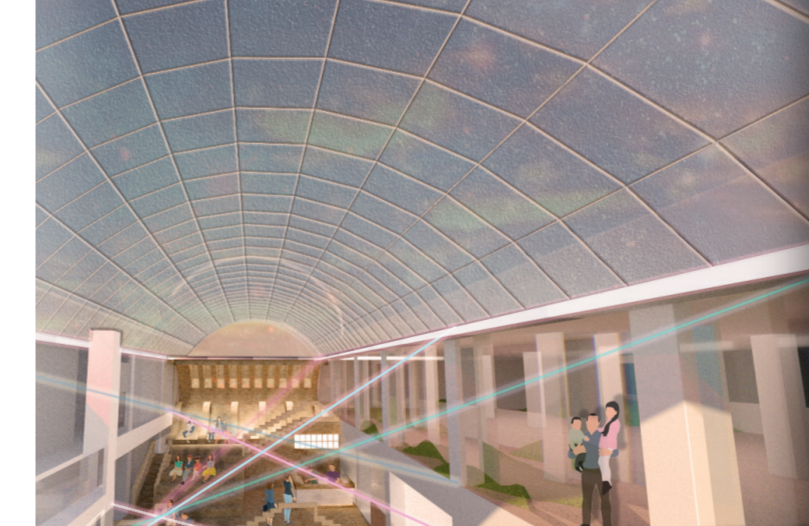
CONCEPT & USER EXPERIENCE



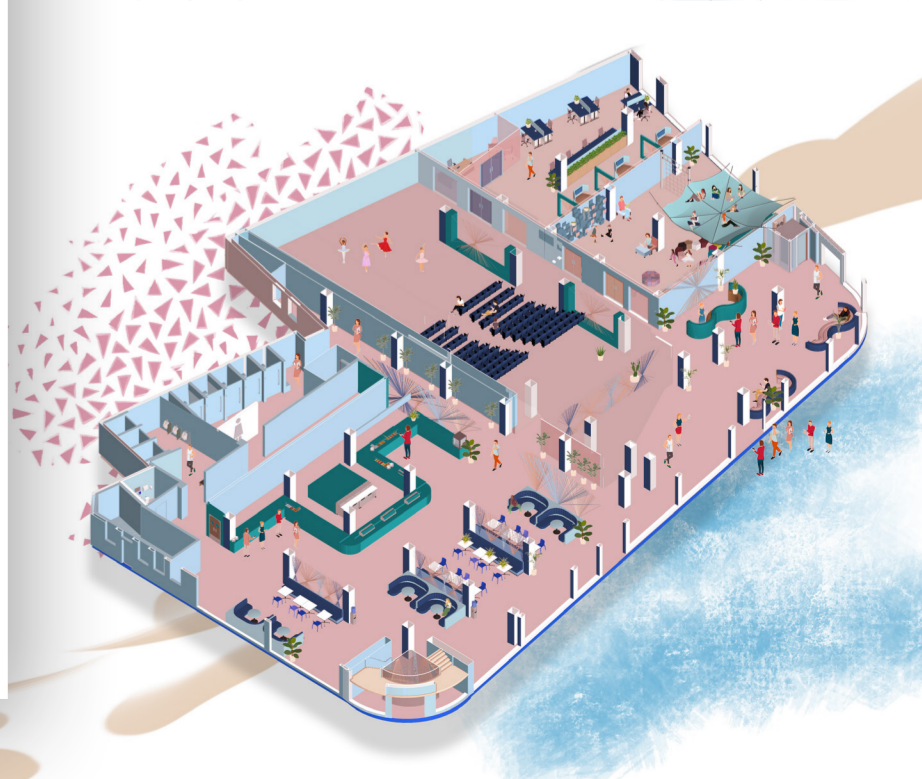
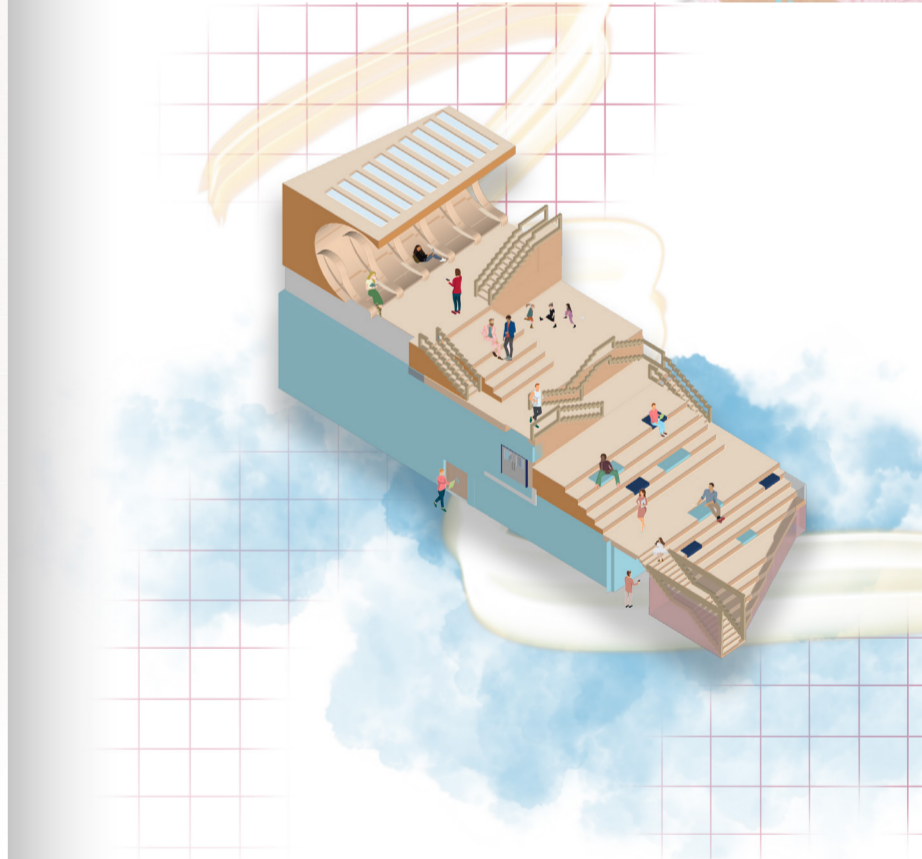
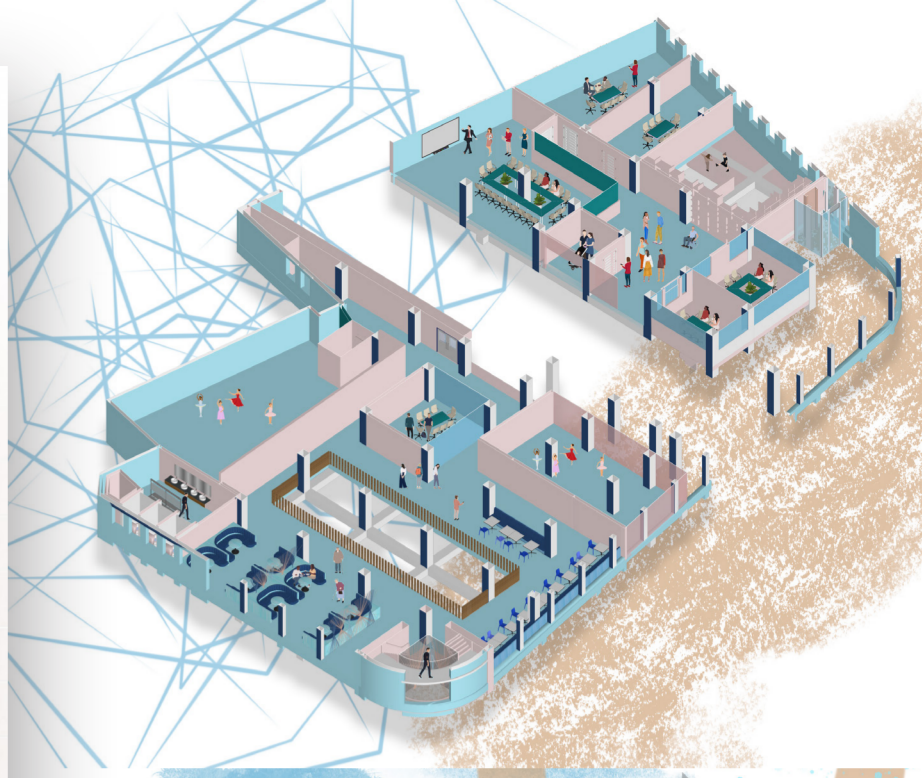
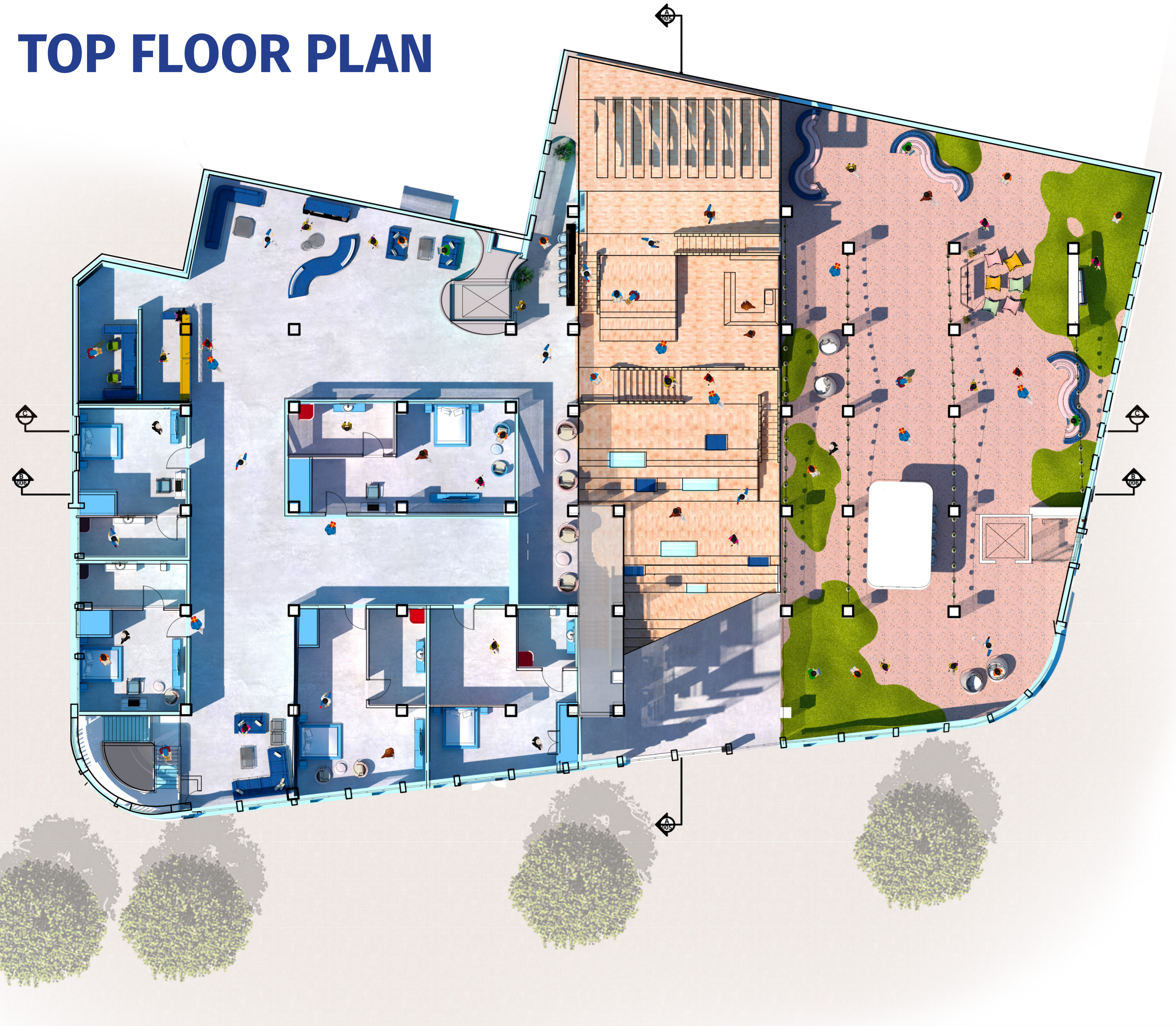
As a result of the recent lockdowns, the whole performing arts industry has been forced to close, resulting in the loss of many **self-employed** performers and the inability to continue in the field in which they have trained. **Support** is required to **strengthen** the performing arts business by assisting people who require more tuition and guided direction in finding careers in their area.



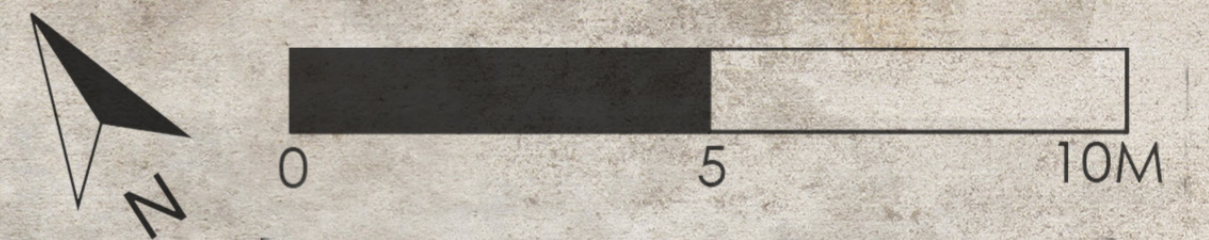
The pandemic has had a significant impact on **mental health**, and the lockdowns have resulted in us not only **isolating** ourselves from daily activities, but also from building **connections** within the community. This community centre will assist in **organically** guiding community relationships and aiding people who are struggling with the normality of **engaging** within the community.



TOP FLOOR PLAN



SECTION B



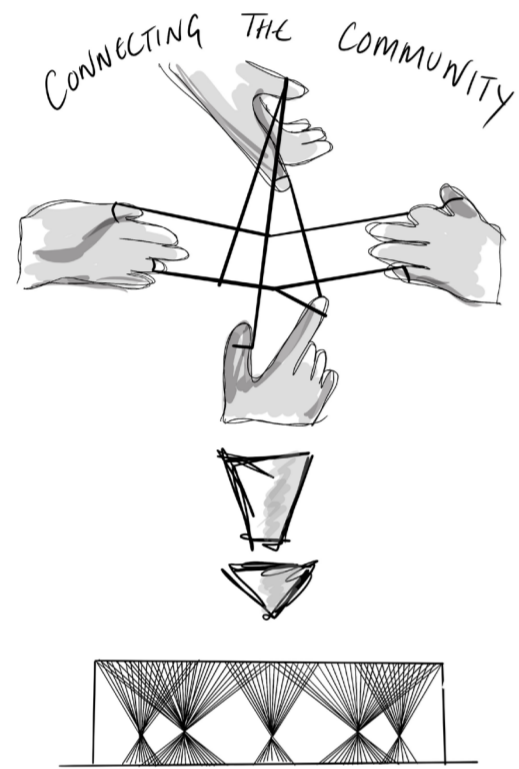
I aim to propose design solutions for community care challenges within my design with an expressive and creative flare. I want to build a central space that will serve as a community centre, a location that is bright, sociable, and sustainable. This community centre will include new, innovative features while also honouring the heritage of its origins.

DESIGN VISUALISATION

The Southsea curve is at the summit of my social steps model. The curve depicts the movement of this circulation and is a representation of the coast's design.

The timber material's continuity reflects an organic impression, while introducing natural components within the structure as a symbol for growth and development.

These photographs depict the many design features of the social steps, which include functional staircases, curved seats, step seating, and a coffee bar.



Reconnection is needed
We all feel defeated,

Our lives have changed before us,

We need to get back on our feet
and return to the street,

To chase the connections we crossed
And jobs that we lost,

To bring our world back to normality
And to restore hospitality,

Lets come together and create a motion
Life is becoming more like an ocean,

With the highs and lows and sandy toes
This is the design that I propose,

To bring us all together like the ocean and
shore
To think about today and not what was before,

To support those who have been affected the
most
By bringing a community centre to the coast.

