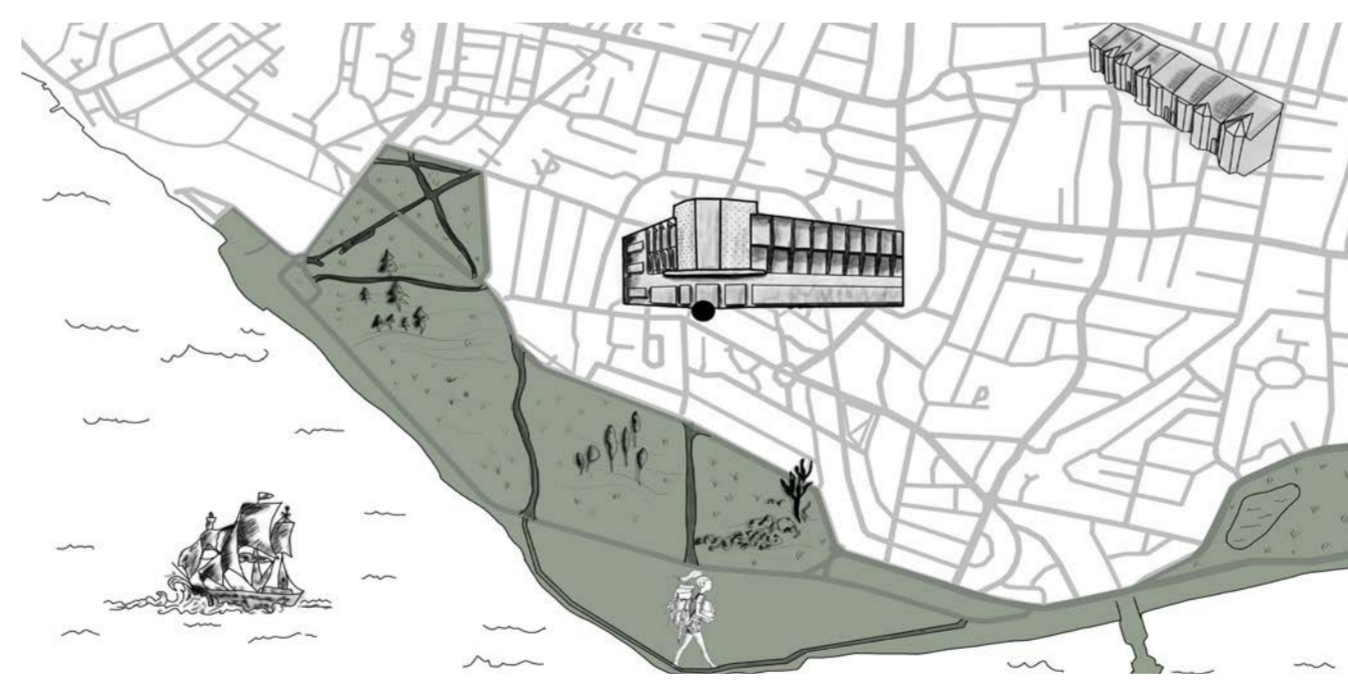


Video of the sun path over a year with a model of the existing building.



SCHEDULE OF ACCOMMODATION

WELCOME

Turn in your phone, get a magazine with instructions and helpful facts and maps.

ENTRANCE

When you enter you should see the natural elements pushing its way out of the building and that should attract your curiosity to enter.

"JUNGLE"

You are welcomed with nature that awakes your excitement and it gives you a feeling of mystery and that you want to find out whats around the corner.

"JUNGLE"

Some areas might test you walking on narrow planks of wood or crossing the river where the water is so clean you can fill your water bottle.

EXCITEMENT

Feel the excitement and unknown elements of the great outdoors in the built environment.

MYSTERY

The success of the mystery pattern is in the anticipation of what might be around the corner, which creates a strong and undeniably pleasurable human response.

VIEWS

The promise of more information, achieved trough partially obstructed long distance views, design revelations, surprising installations, or unexpected architectural features draws us in and engages us with our environment.

HIKING

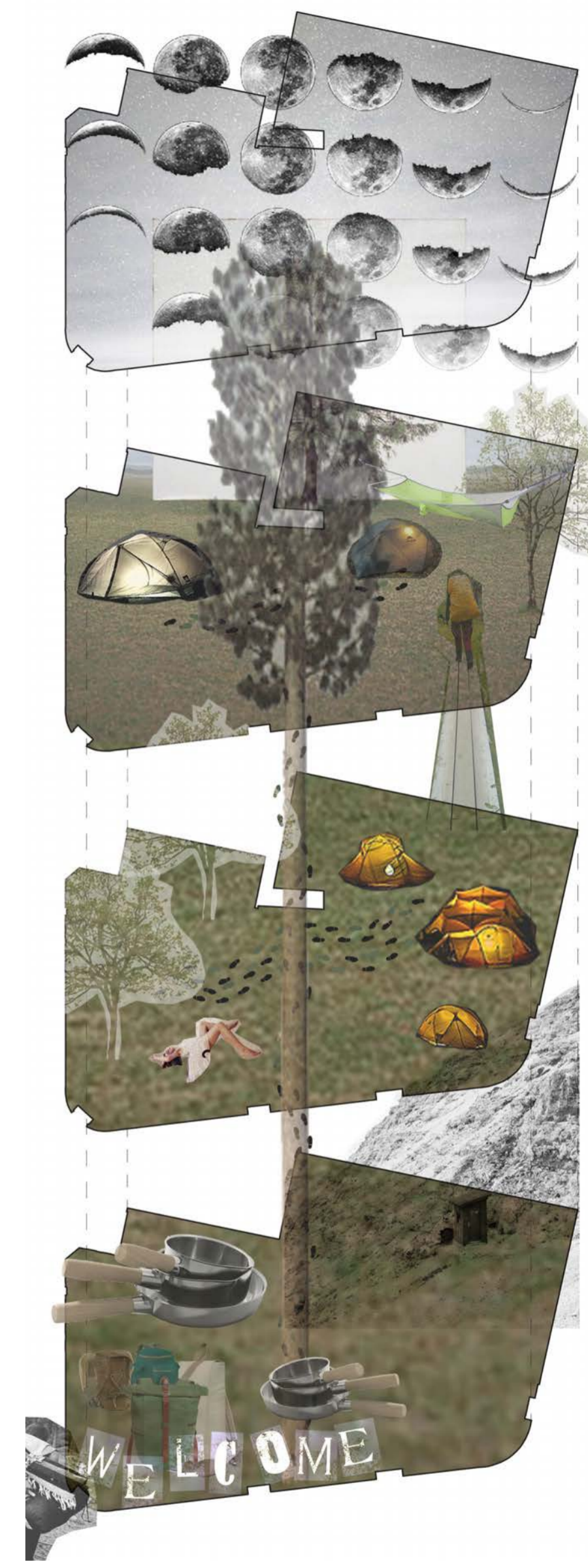
See all of Portsmouth, get your maps out and find all the hidden gems or take a day hike along the coast. You can also take the boat over to the Isle of Wight.

TENTING

To have your own private tent or share a big tent with your friends

STARGAZING

On the clear evenings you can watch the stars while laying down on a comfy mattress.



INTRODUCTION

The location for this design is in a 1960's department store called Knight and Lee. The building has a very structured core with beams and columns across the space.

Werifesteria is a hostel for travellers and nature lovers that admire the mystery in nature and the sky. A space to connect and unwind with nature. The space should build curiosity within the visitors, with a feeling of mystery. Tenting and tensile structures is a big part of my focus, organic shapes should lead you trough the space. Bringing in nature and sustainability is essential for me and my design. I am using fabrics from only natural resources in my design. Everything circles back to nature and our connection, encounter and feelings from it. It brings joy and happiness by being in the nature and to have that feeling inside is what the hostel is all about.



Inspiration Collage



Colour collage describing the feeling of the space.

WALKING THROUGH THE SPACE

Saga has had a long journey with a heavy backpack and sore feet, and she has finally arrived at Werifesteria, the camping hostel that lets you relax and enjoy but lets the adventure continue.

Taking her first step in, she is met by an ample vast space with a reception desk with organic flow shapes made of cork. She is met by Henny, that works with activities and welcoming guests. She continues in and puts her hand on the cork reception desk; it feels like walking in the forest, except the cork is a bit softer and smoother. She looks to the right, and the space expands and gets bigger with the fabric tensed around her; she strokes the fabric; it is tensed between the cold steel structure. The columns are surrounded by fabric in different layers, just like trees shooting up the sky. At the bottom of the structure, a light lights up three floors up to the end of the space. She gets the feeling of a magical forest where the lit-up trees guide the way. Everything is soft and organic, and it feels like being in nature. She walks through the communal kitchen area in the middle of the lit-up forest.

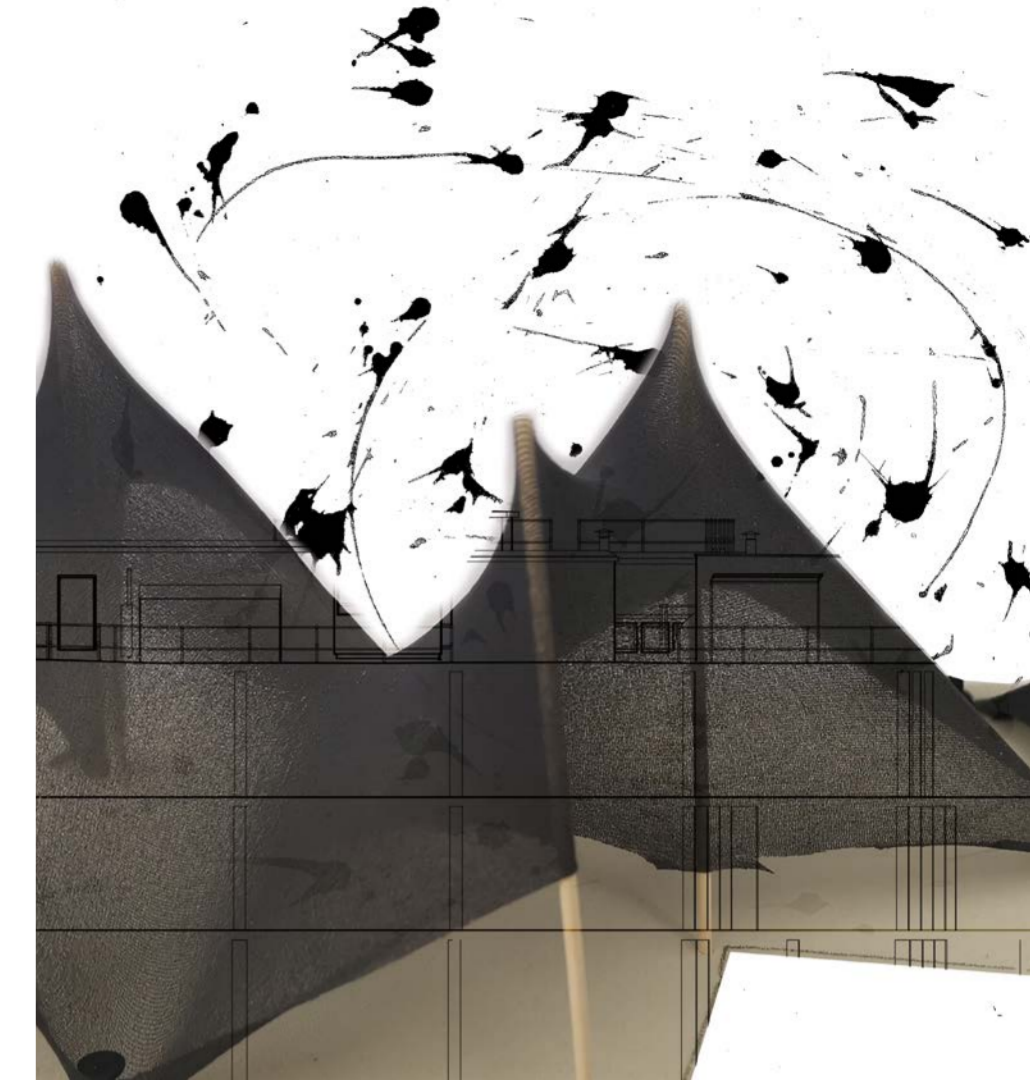
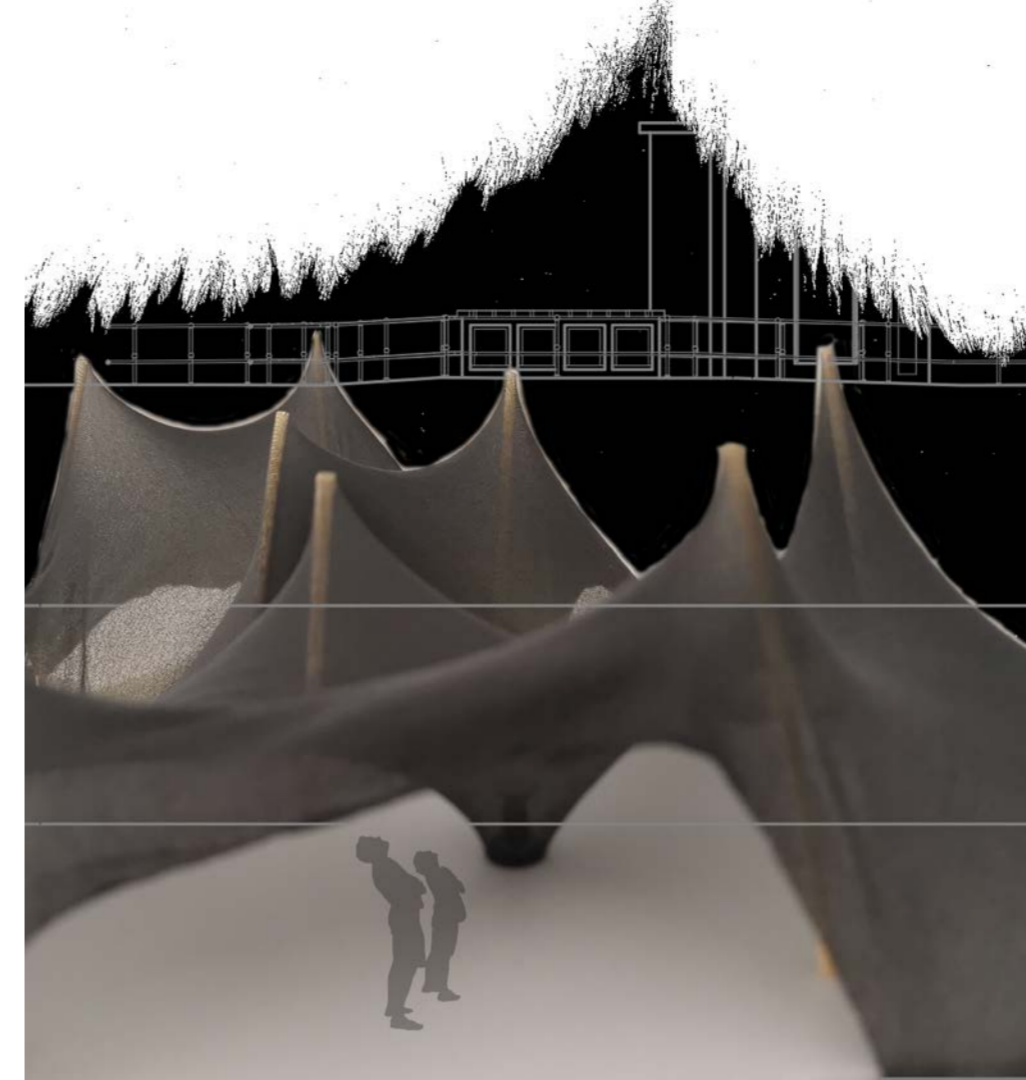
She arrives by a vast staircase; you could describe it as a mountain covered in cork, a little ruff surface and sturdy. She grabs the handrail, also made of cork, but it is softer than the stairs. The connection between the cork stair and railing is glass; it lets you see the shape that flows from side to side. She walks up and focuses her view upwards, where there are projections on the tensile fabric showing clouds and blue sky. Suddenly it changes to stars and the northern lights, the evening is arriving, and the image follows the natural rhythm. She arrives at her floor and enters the frosted glass doors connected to the frosty glass walls that wind down the corridor. She takes her first step into the wooden planks that lead you into the open space—grabbing a lantern on her way in to put it in her tent later. She looks around to find a good spot, and on the walls, there are 3D formations representing trees shooting up to space. Taking a step off the wooden planks, she meets a soft ground, almost like the grass where she can put up her tent.



Word collage describing the feeling of the space.



Colour collage describing the feeling of the space.



HYBRID DRAWINGS



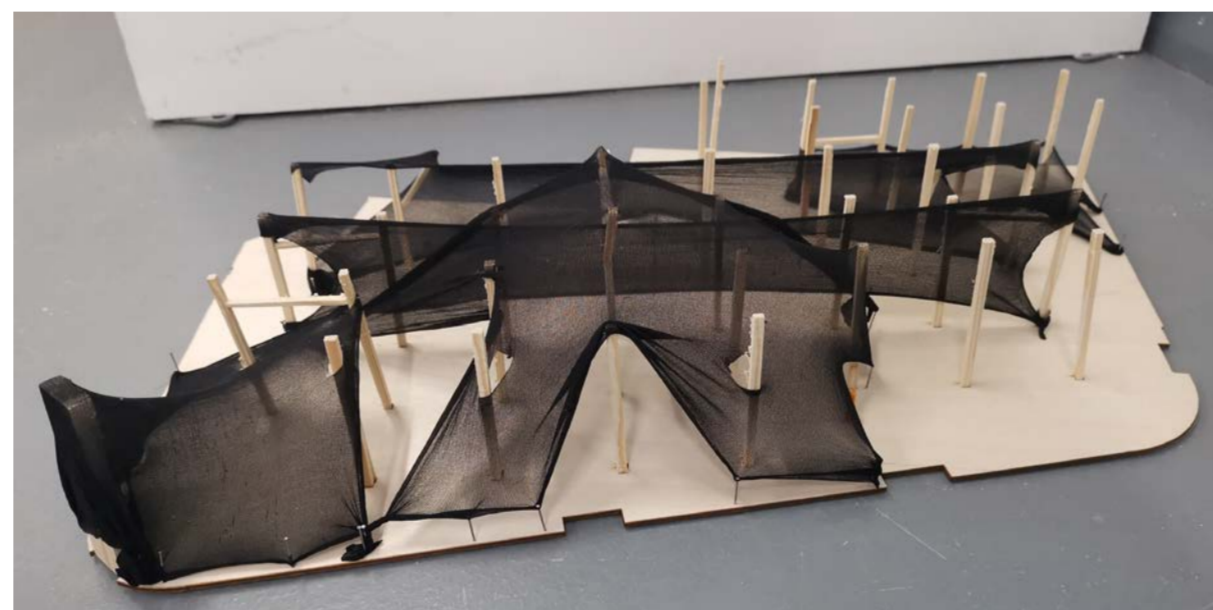
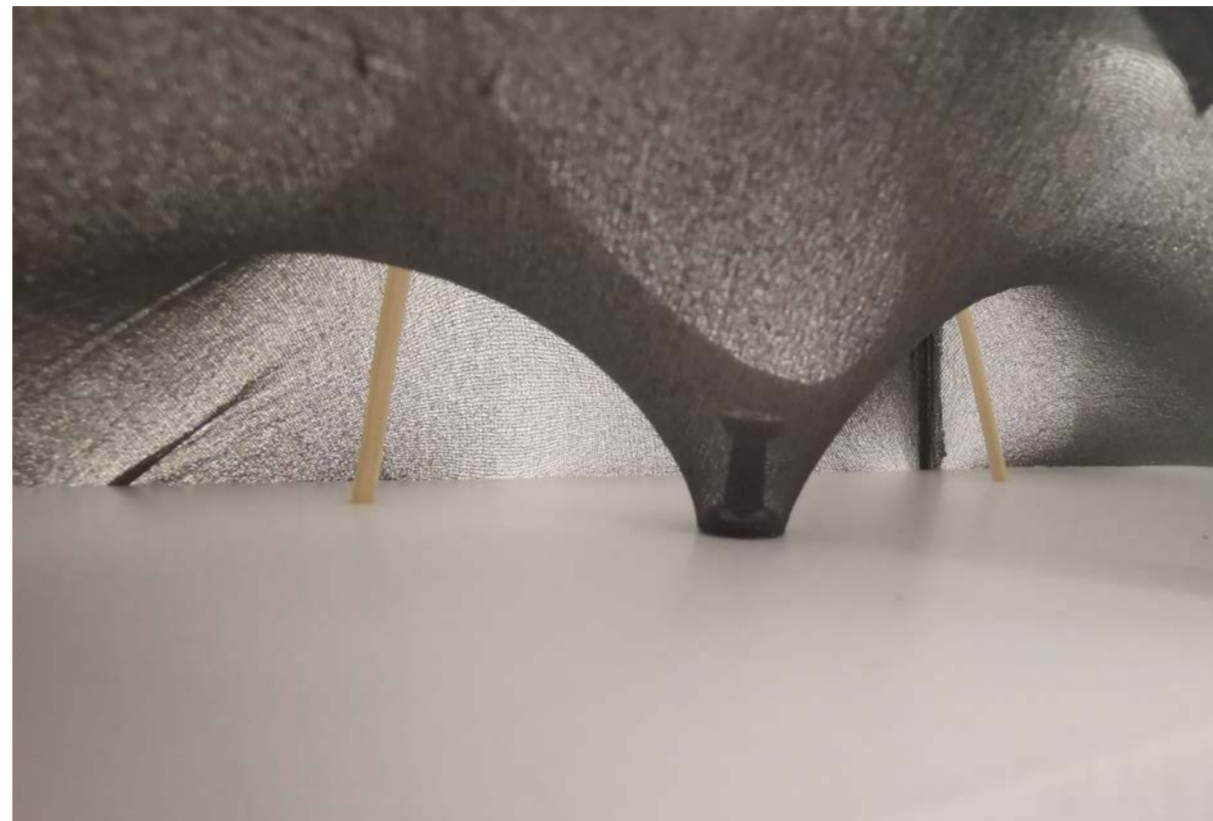
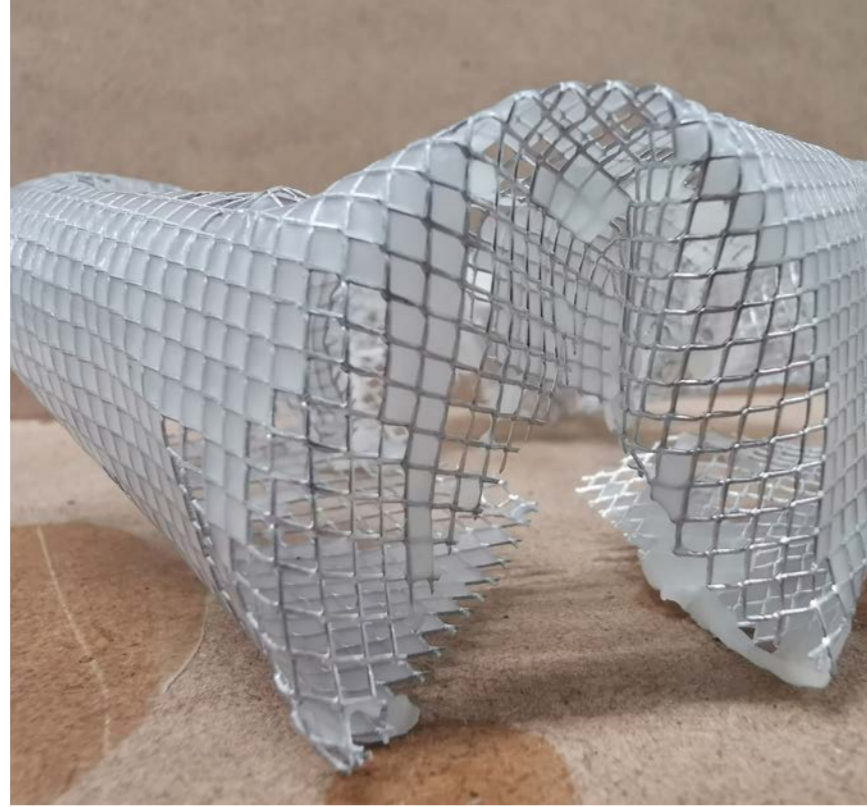
CONCEPTUAL NARRATIVE

Project brief

A person starts a journey whether it's a big journey or a small journey they have ambitions and a goal. The journey might be planned or take them where ever the road leads them. Camping in nature, where it is peaceful and a sense of mystery, sounds and lights and stars. What's happening around the corner, where is the best place to camp? Close to water and a flat surface, but a bit hidden from the wind. Bringing in the adventure and nature in the existing building. This collage is an early idea of nature taking its way inside and be connected to the sky and stars with an open ceiling. Allowing nature to come in from all directions. The mystery of nature is intriguing and it makes us enjoy the surprises hiding around the corners. A word that describes that and the name I chose for the Hostel is Werifesteria.

“To wander longingly through the forest in search for mystery.”

That describes the feeling I want travelers and visitors to have when they stay at the hostel. Imagining that the type of person that stays at the hostel is filled with curiosity to see a new place.



SILK WORM

A material that fascinates me is the silk that silkworms and spiders produce. Silk as a material is solid and tough, and with the correct advancements in size and molecular structure, it could be used on a bigger scale. The reason I include this material is that I would love to see a future where the material is completely sustainable and natural. The pavilion created by Neri Oxman is made by silkworms that have been controlled by heat to instruct them where to build. There was a base structure already made to guide them as well. I would love to use a material like this, where the fabric is self-repairing and natural.

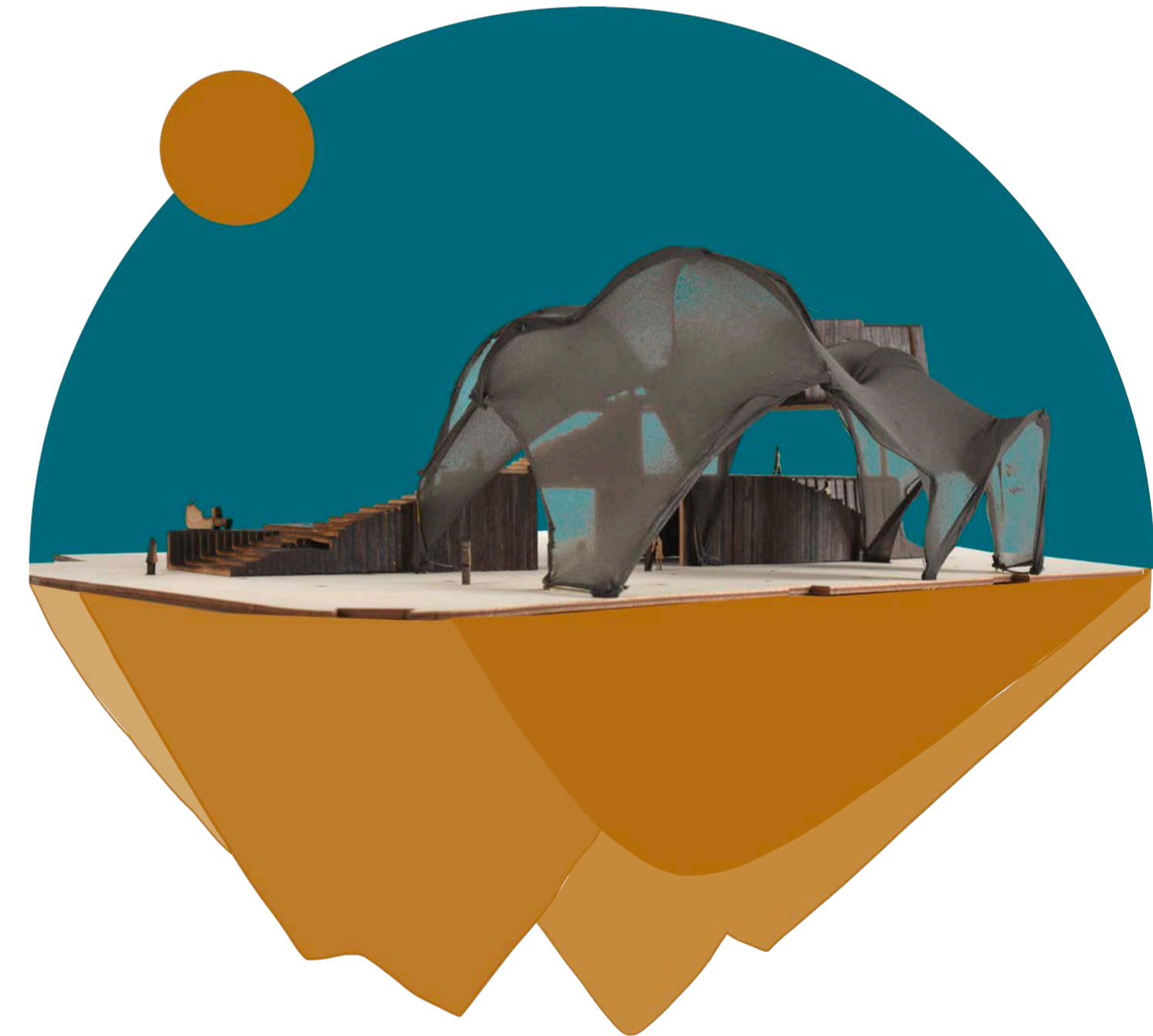
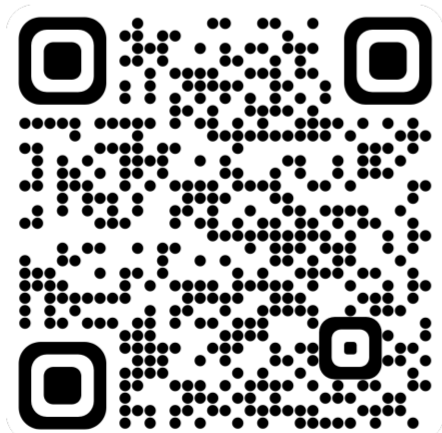
RICE HUSKS FABRIC

Rice is produced and widely consumed over the world, but the rice husks are a big problem for the farmers. Sony has developed a "porous carbon material" that can absorb microscopic pollutants as well as improve safety and water and air quality. It is highly absorbent and deodorizing which makes it perfect for clothing and toiletries. It can be made into a variety of fabrics and I think the could be a sustainable option for some of my tensile structures. The tensile structures around the columns and the info and kitchen structure would be a great place to apply this material. I'll keep the original rice husk colour.

WAX, MESH AND FABRIC

I am interested in fabrics and wanted to experiment with a different material that have the potential to work in a similar way. I found wax interesting because if it is thin it is slightly see-through like nylon when you stretch it.

I have many videos of me experimenting with wax mash and fabric to see how it behaves. I decided to take a piece of fabric and dip it in the melted wax and then try to model it after I experimented with poring wax onto mesh in different ways.



MATERIAL EXPLORATION

Sustainable and natural fabrics

It is interesting to see how tent-like structures has been developed and how it started. From such a heavy structure to the more modern days structures that are inspired by spider web or silk as a material and where might it take us in the future?

Indoor camping or indoor shelter pods to challenge the way we live in our interior spaces in this modern-day technological world.

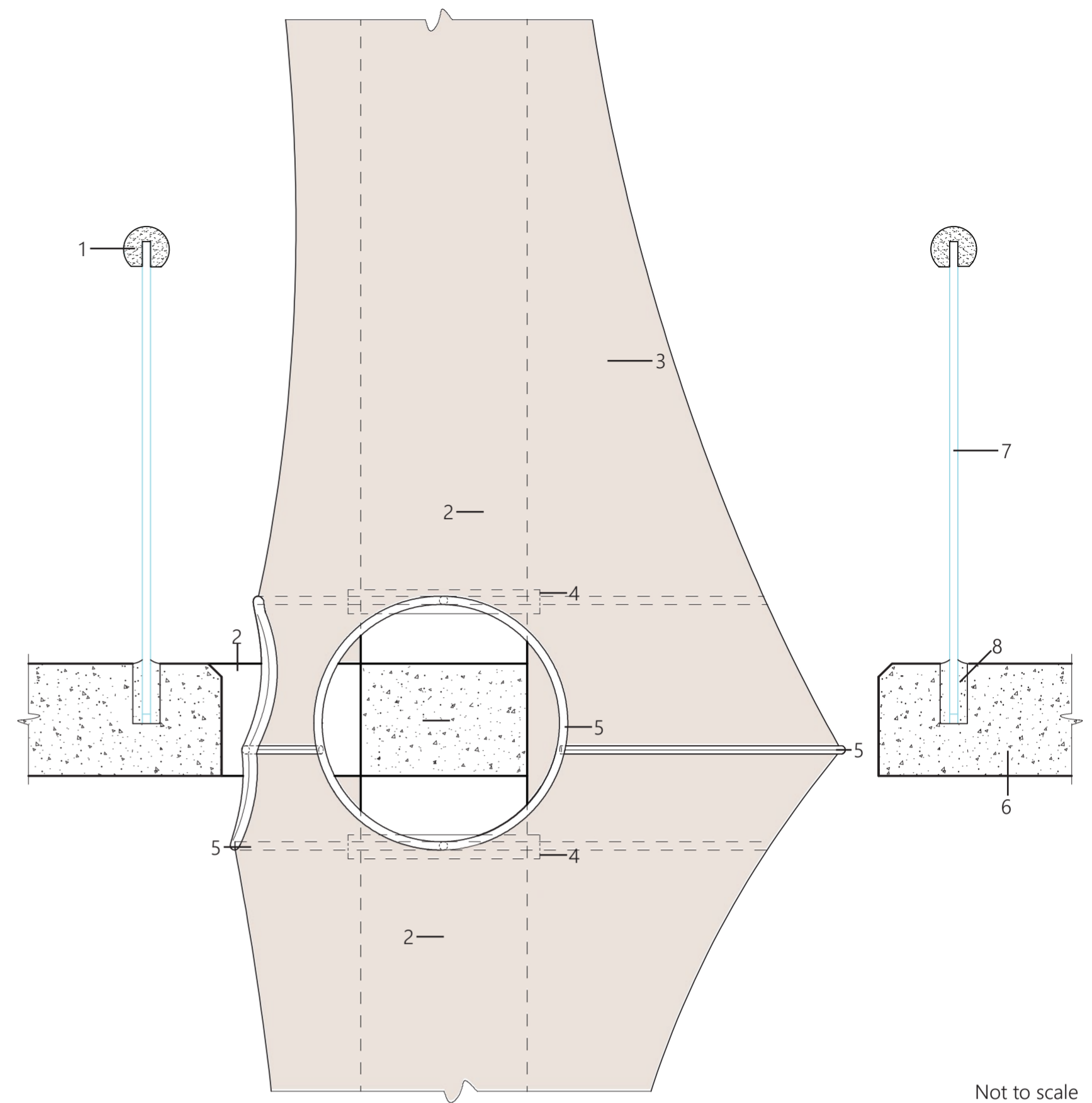
Now days humans use tents because of the closure to nature but to still be protected from weather and wind. The connection to nature is a bit lost with our modern-day buildings. By bringing nature inside more and use these lightweight structures that are easy to change the look of humans can possibly achieve a way to live inside and feel more connected to nature.



3D VIEW AND GROUND FLOOR PLAN

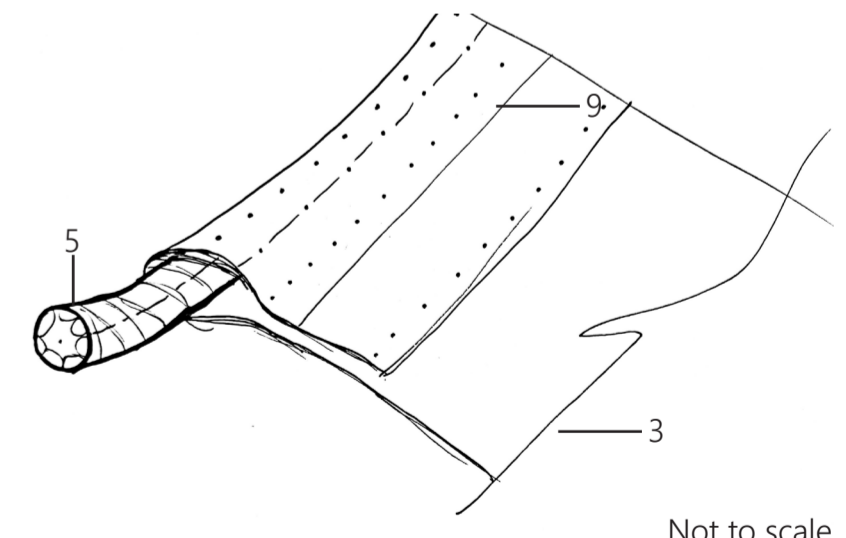


Hand crafted model

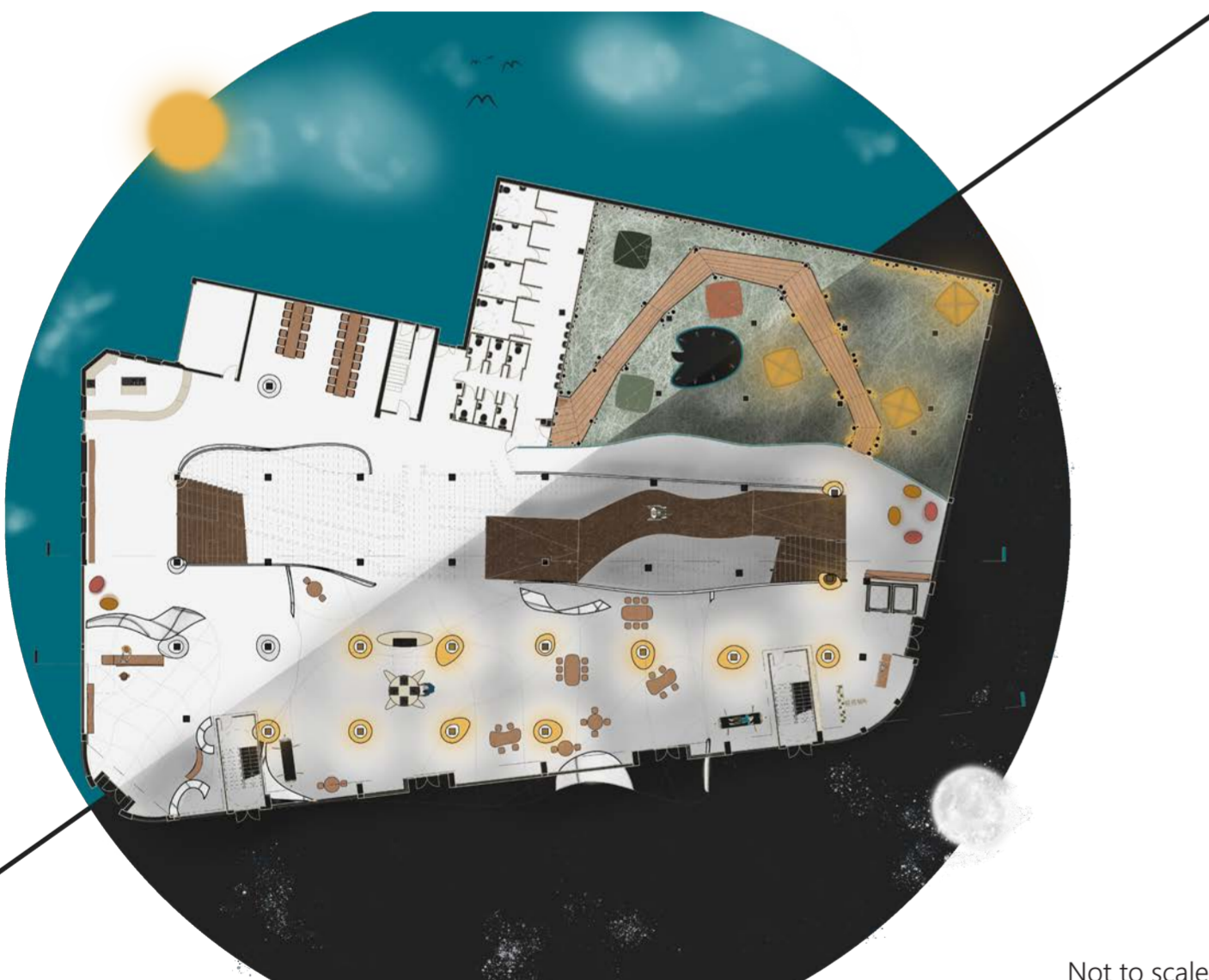


Not to scale

- 1. Cork handrail
- 2. Concrete beam
- 3. Fabric
- 4. Steel clamp
- 5. Steel frame
- 6. Concrete floor
- 7. Glass
- 8. Neoprene
- 9. Stitches



Not to scale



Not to scale

DETAILS

I focused on one specific tensile structure that will surround the beams. I experimented to find a way that worked to surround the beams and columns with fabric to look almost seamless. I have made a detail model of how the fabric will be attached to the steel frame and stretched the fabric to see how it behaves, especially in the curves. As you can see in the video on my blog (QR code on page 3) and in the pictures on this page, the fabric behaves well in the curves and doesn't need to be attached separately. This confirmed my thoughts about the detail and proves that it works to do it like that.



Elevation

Not to scale



Hand crafted model

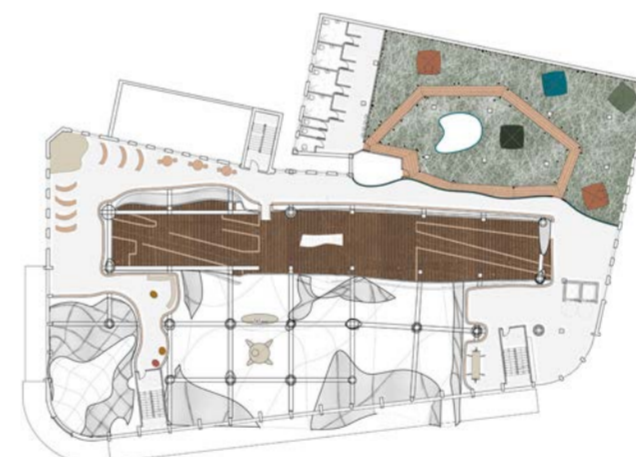


Hand crafted model



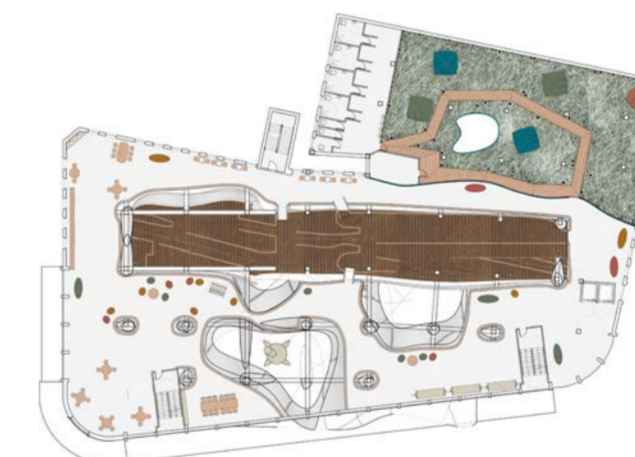
Section

Not to scale



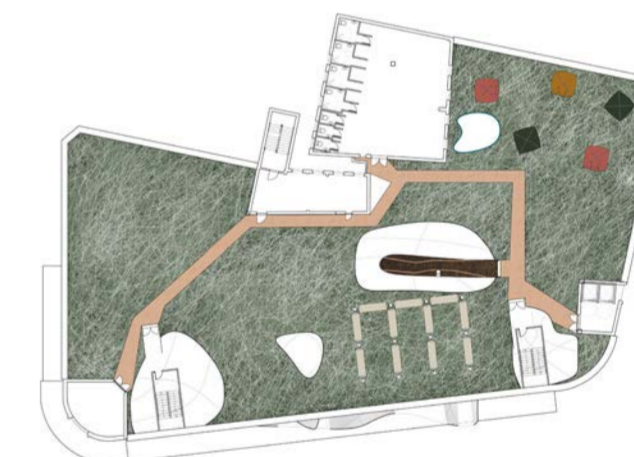
1st floor

Not to scale



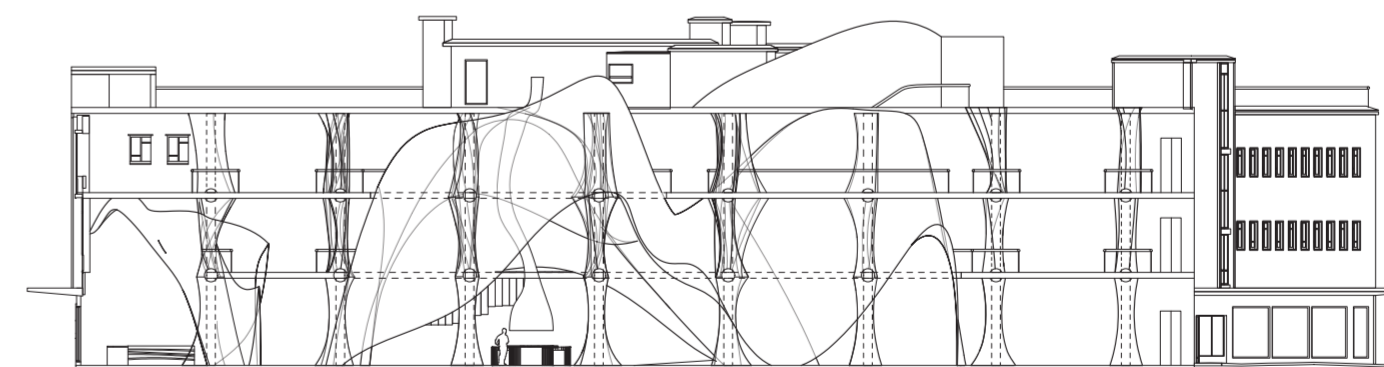
2nd floor

Not to scale



Rooftop

Not to scale



Section

Not to scale

MODEL AND VISUALS

The best way to convey an organic scheme connecting to nature and future thinking is by making by hand. Testing and see what works and the represent it visually in drawings.