

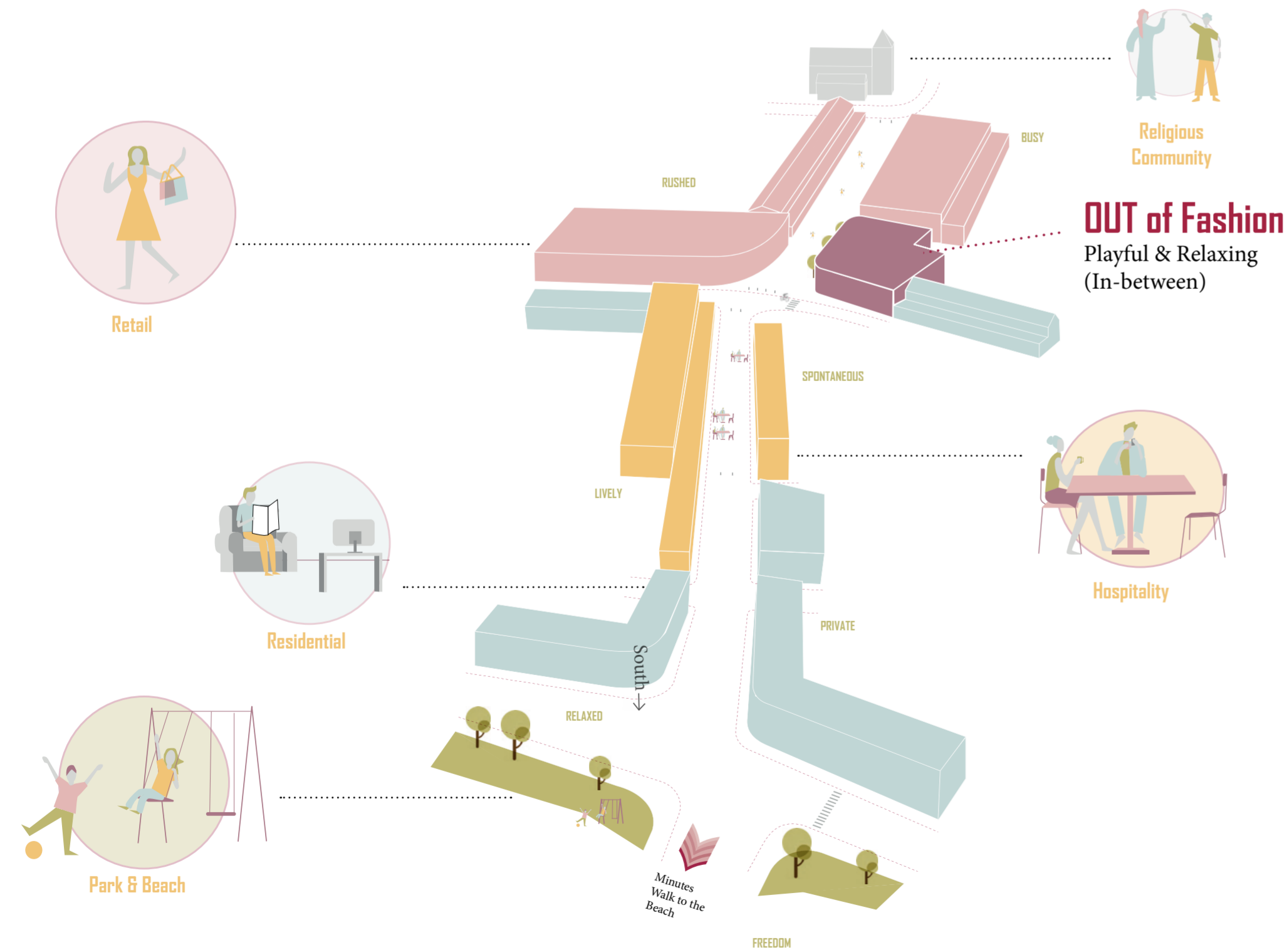
OUT of Fashion

Site & Brief



Many department stores around the UK have closed in the past few years, one of which is known as Knight & Lee in Southsea. This department store had a rich history and continued to serve customers for 188 years until it closed its doors on 13th July 2019. The store began as a small lace and tailor shop at Portsea Docks, Queens Street, moving down later to Palmerston Road, Southsea.

OUT of Fashion starts with looking at the site and the town centre's decrease in footfall. Developing on research with fast fashion and waste. Combing these issues, OUT aims to reduce our textile waste and create a space to express, play, inspire and relax.



Collage illustrating consumerism and textiles



Collage connecting the site's history with people

"Fast fashion isn't free. Someone, somewhere is paying."
— Lucy Siegle

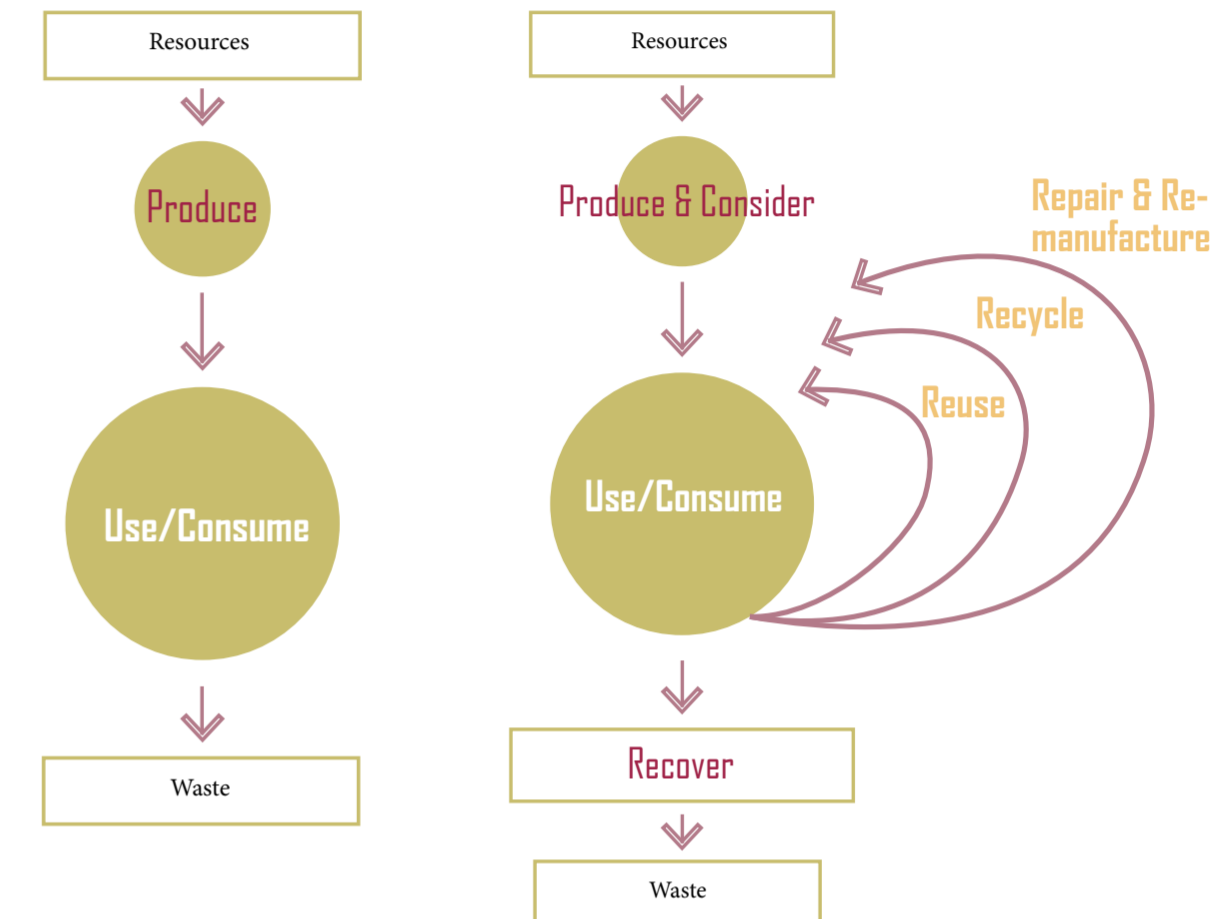
This project focuses on sustainability and community; this involves bringing the professional and public community together, helping the town centre to regenerate through re-purposing.

The brief is to offer creative jobs in the textile business which will encourage the public to incorporate: Recycling, Re-purposing and Remaking unused textiles/garments during their visit. This will help begin slow down the fast fashion ideology and inspire people to re-home unloved garments, be it bought from the workers or personally crafted in the store.

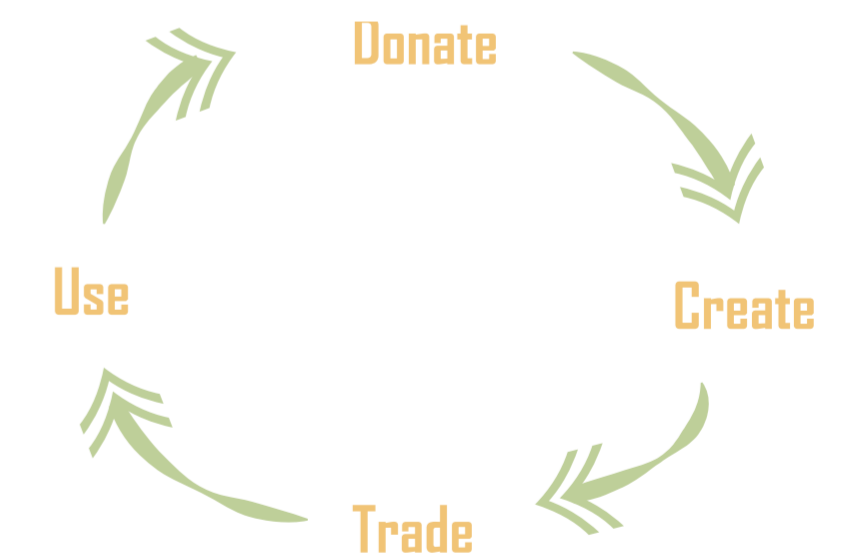
The space aims to create a community through the final process of consumerism - waste. Rather than waste, the space will encourage visitors and workers to make and play with textiles that have been donated. Play is important part of the brief, an activity that ties all the activities around the site, from relaxing to creating liveliness. It will offer something to everyone at any age. Be it through the fun of dressing up or expressing, down to thinking and crafting whilst relaxing, all in a sustainable manner that will benefit the environment. Furthermore, by re-purposing the building with aspiring creative workers who use donated clothes, less cost is put in - allowing cheaper but good quality garments to be produced, making it more accessible and environmentally friendly.

Current Linear Economy Diagram

Future Circular Economy Diagram



Design Intent



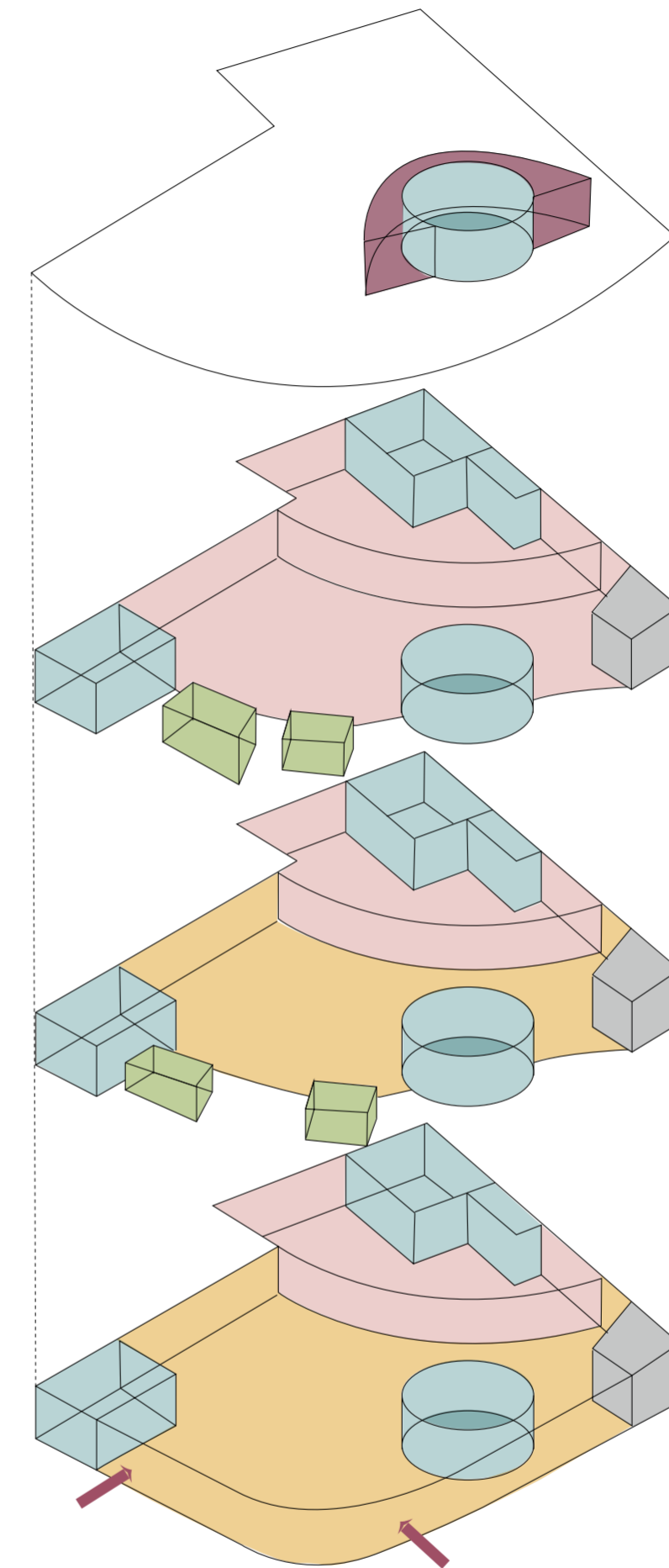
OUT of Fashion

Design Concept

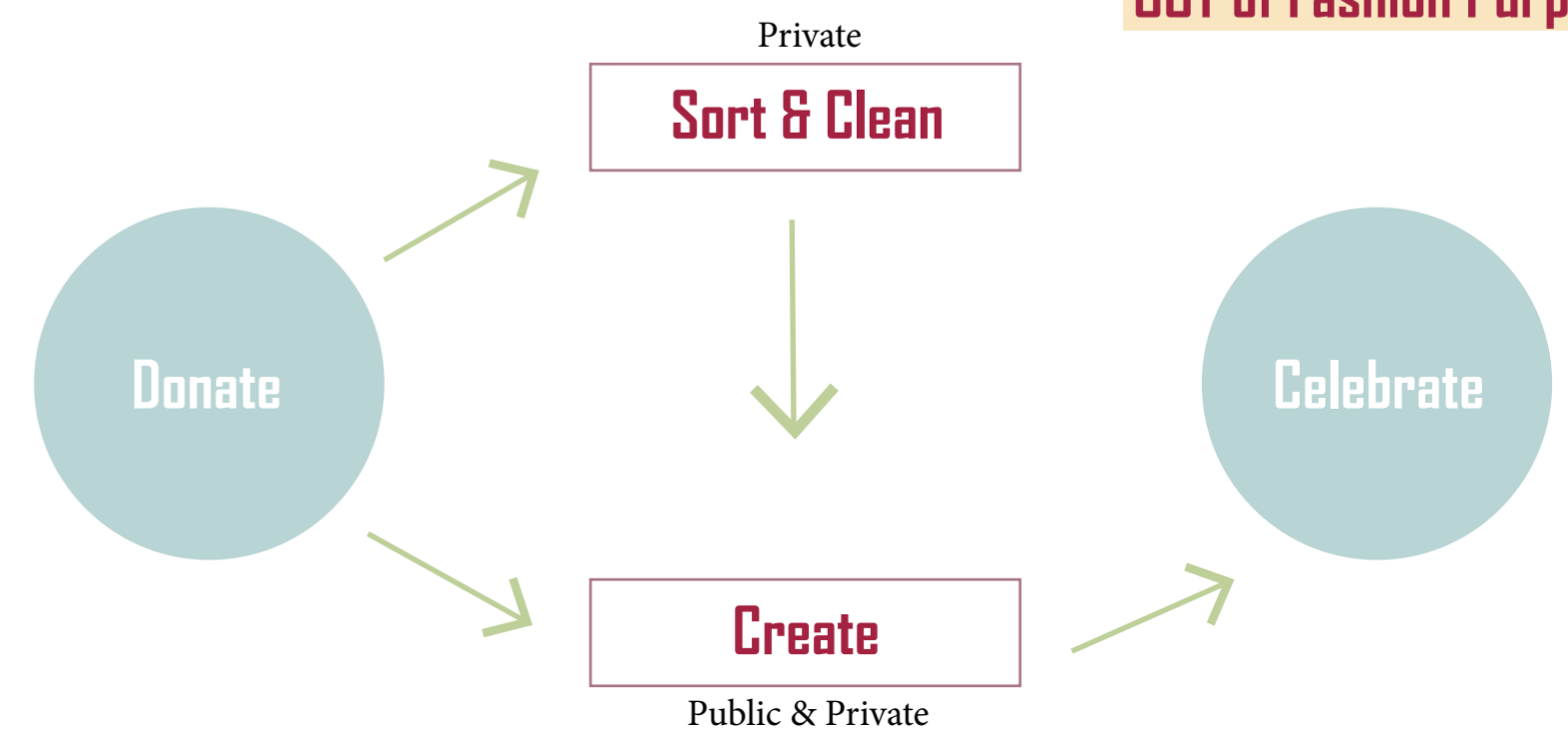


Key

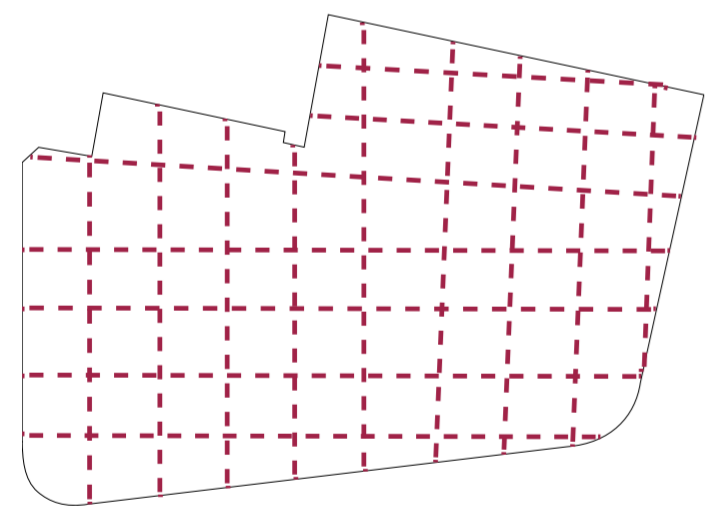
- Reception
- Changing rooms
- Toilets / Baby change
- Storage areas
- General
- Cleaning, Sorting and Selecting station
- Fashion Runaway
- Offices with special equipment
- Meeting Room
- Private
- Exhibition
- Interlacing
- Cafe
- Craft area
- Shop
- Donation area
- Public
- Custom to Floor Function
- Vertical Circulation
- Entrance
(Original Entrance have been Preserved)



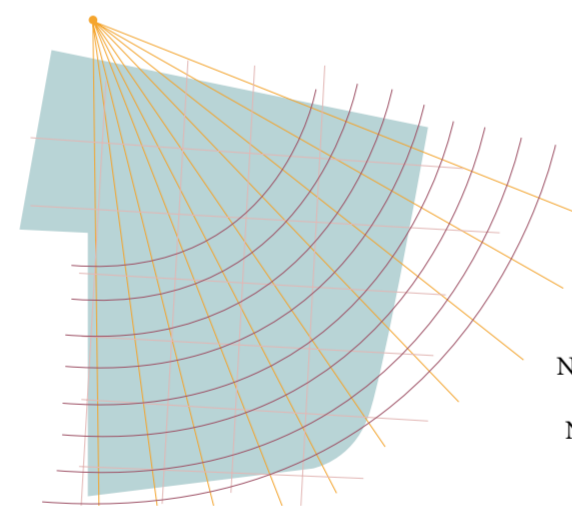
OUT of Fashion Purpose



Existing Structure & Grid

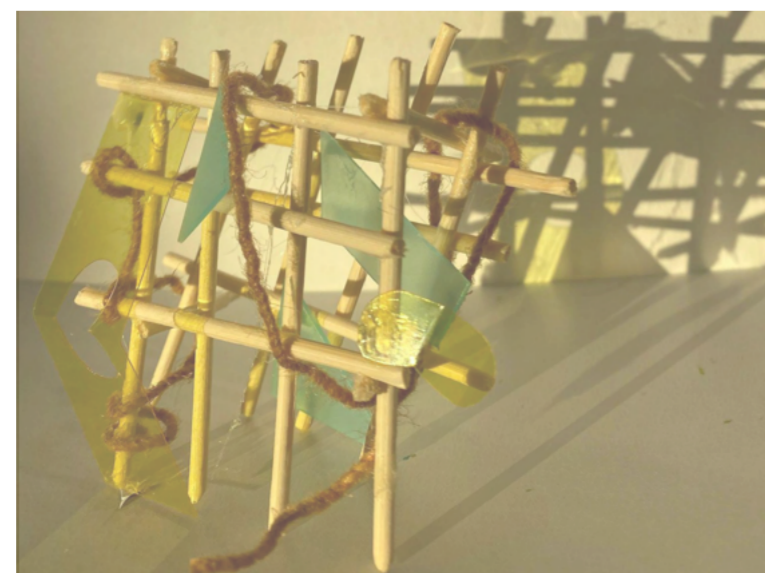
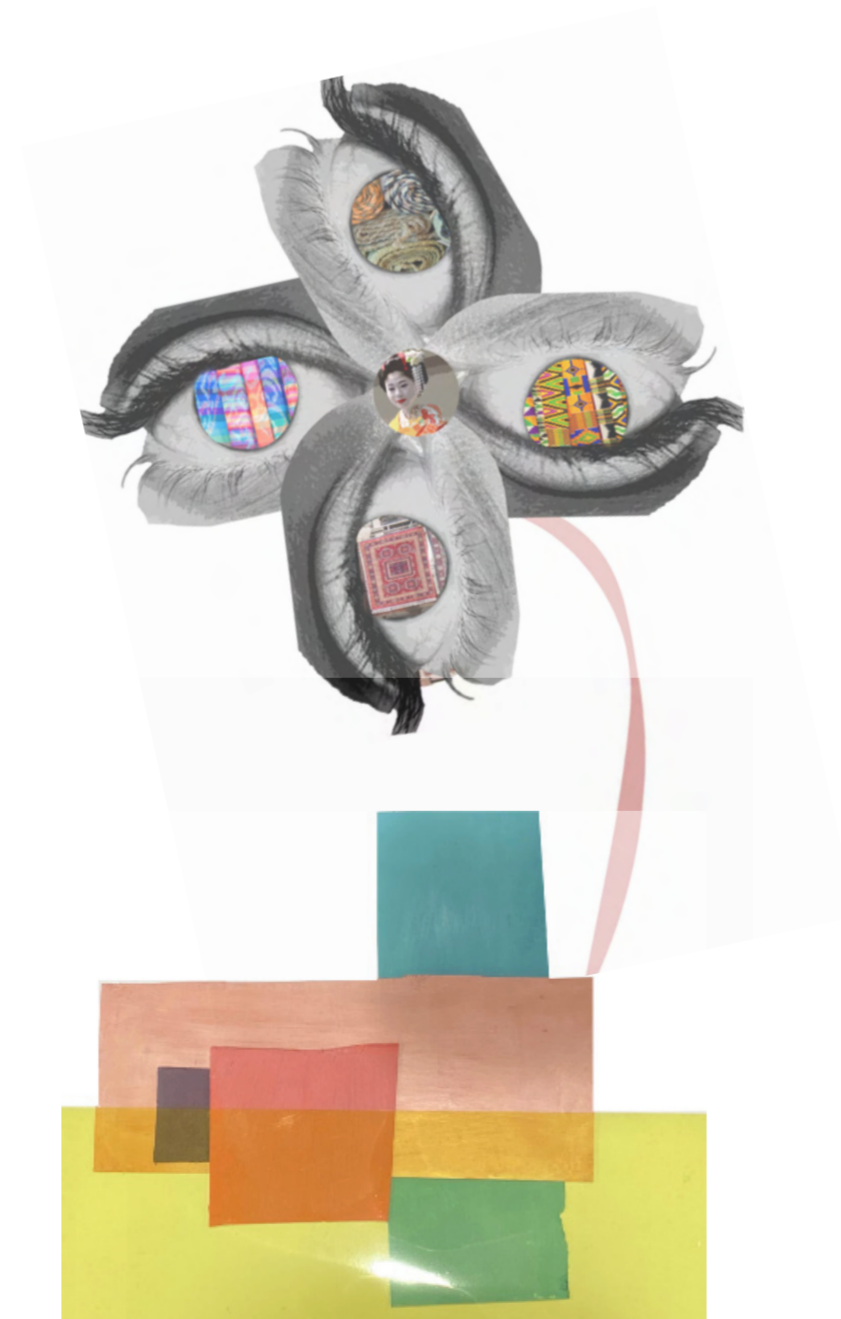


New Warp & Weft Grid



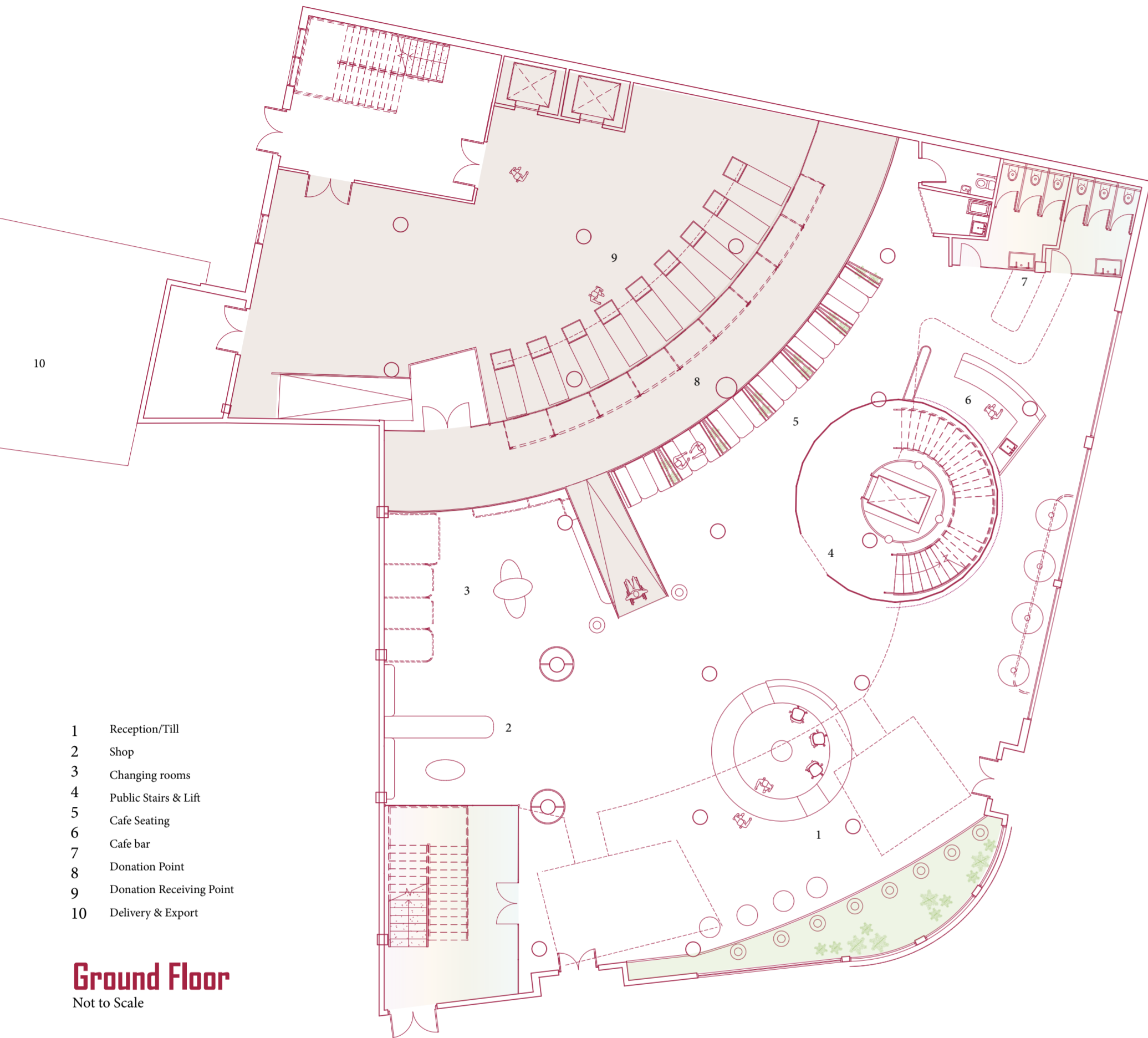
- New - Warp
- New - Weft
- Old Grid

OUT's design focuses on redefining the existing chequered grid by following its concept of pattern (Warp & Weft) and colour. It stems from the celebration of a singular thread that creates textile, an identity across the globe.



OUT of Fashion

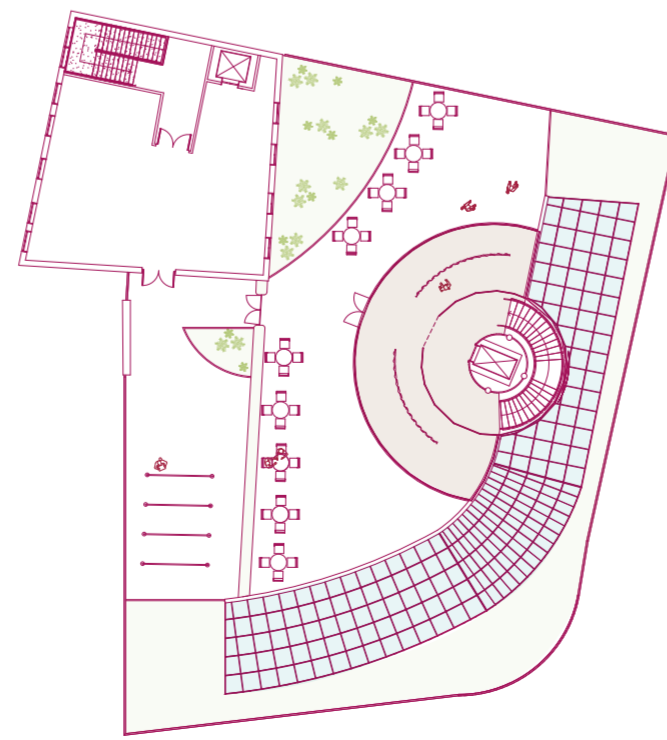
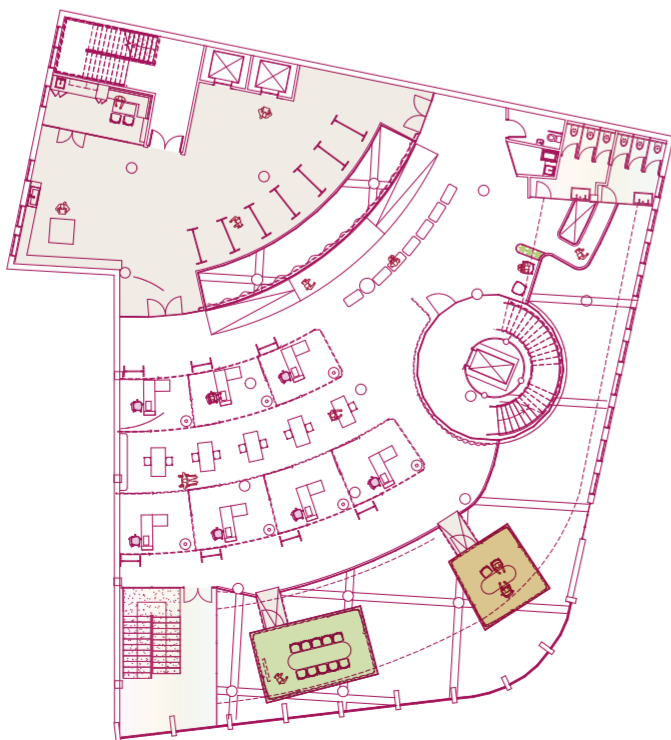
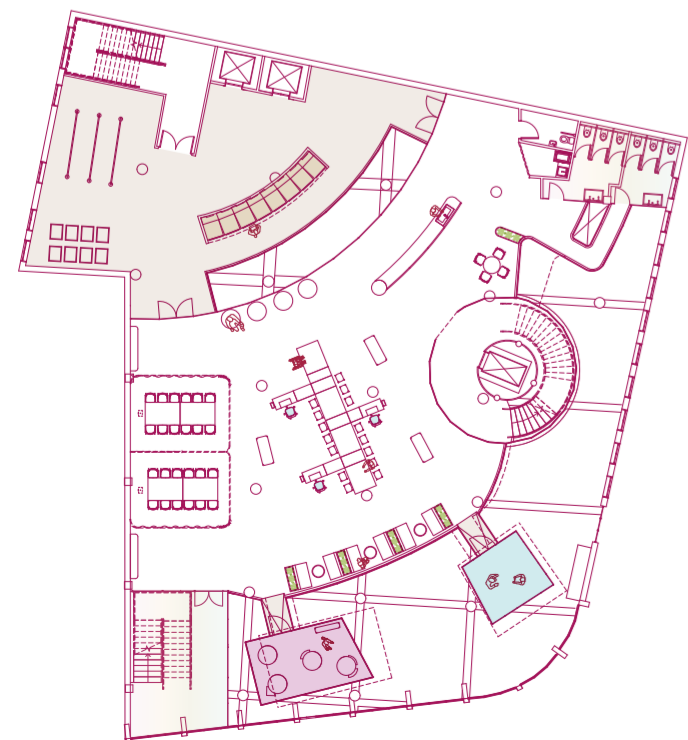
Proposed Design



- 1 Reception/Till
- 2 Shop
- 3 Changing rooms
- 4 Public Stairs & Lift
- 5 Cafe Seating
- 6 Cafe bar
- 7 Donation Point
- 8 Donation Receiving Point
- 9 Delivery & Export

Ground Floor

Not to Scale



First Floor

Second Floor

Roof



Reception & Shop



Public Craft Room



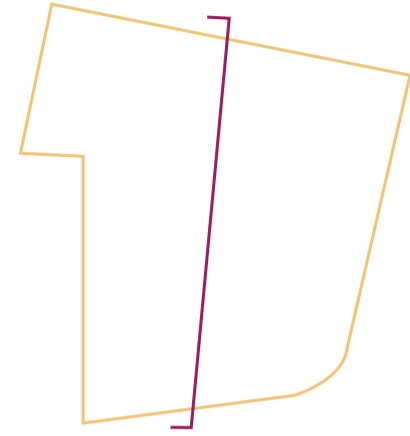
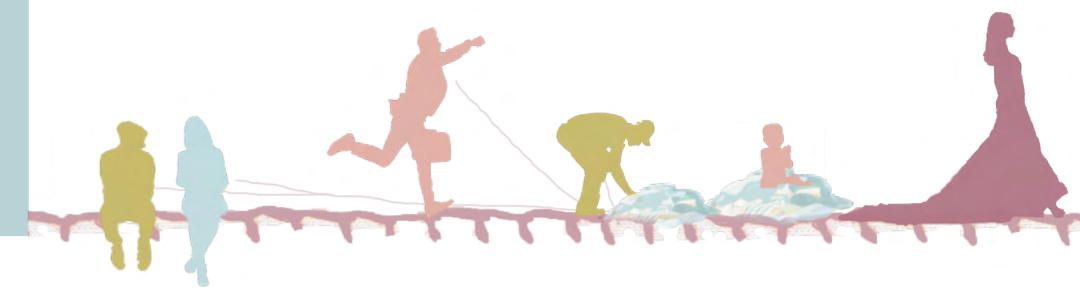
Cafe & Donation



Designer's Studio

OUT of Fashion

Section A-A



Not to Scale



'Fuel' the Building



Sort & Clean



Shop & Sip



Craft & Play



Celebrate & Learn

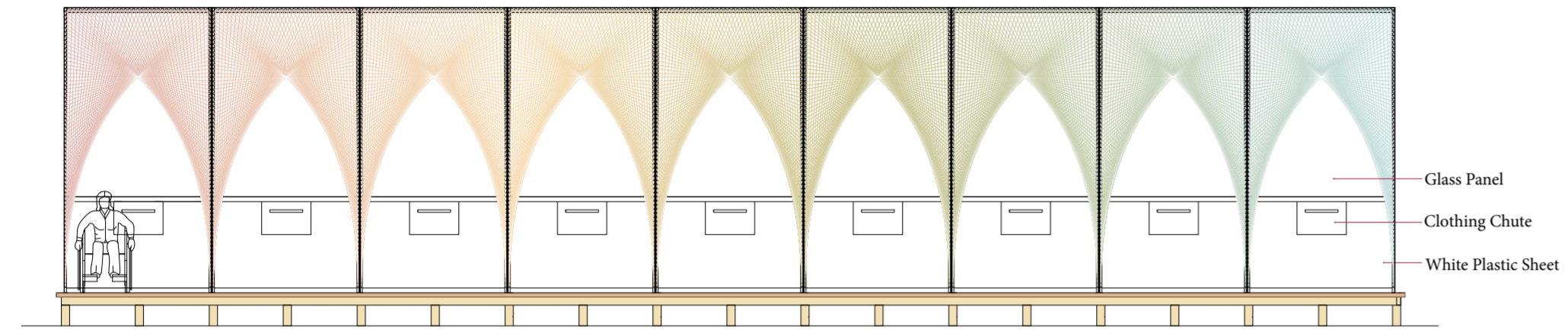


Inspire & Communicate

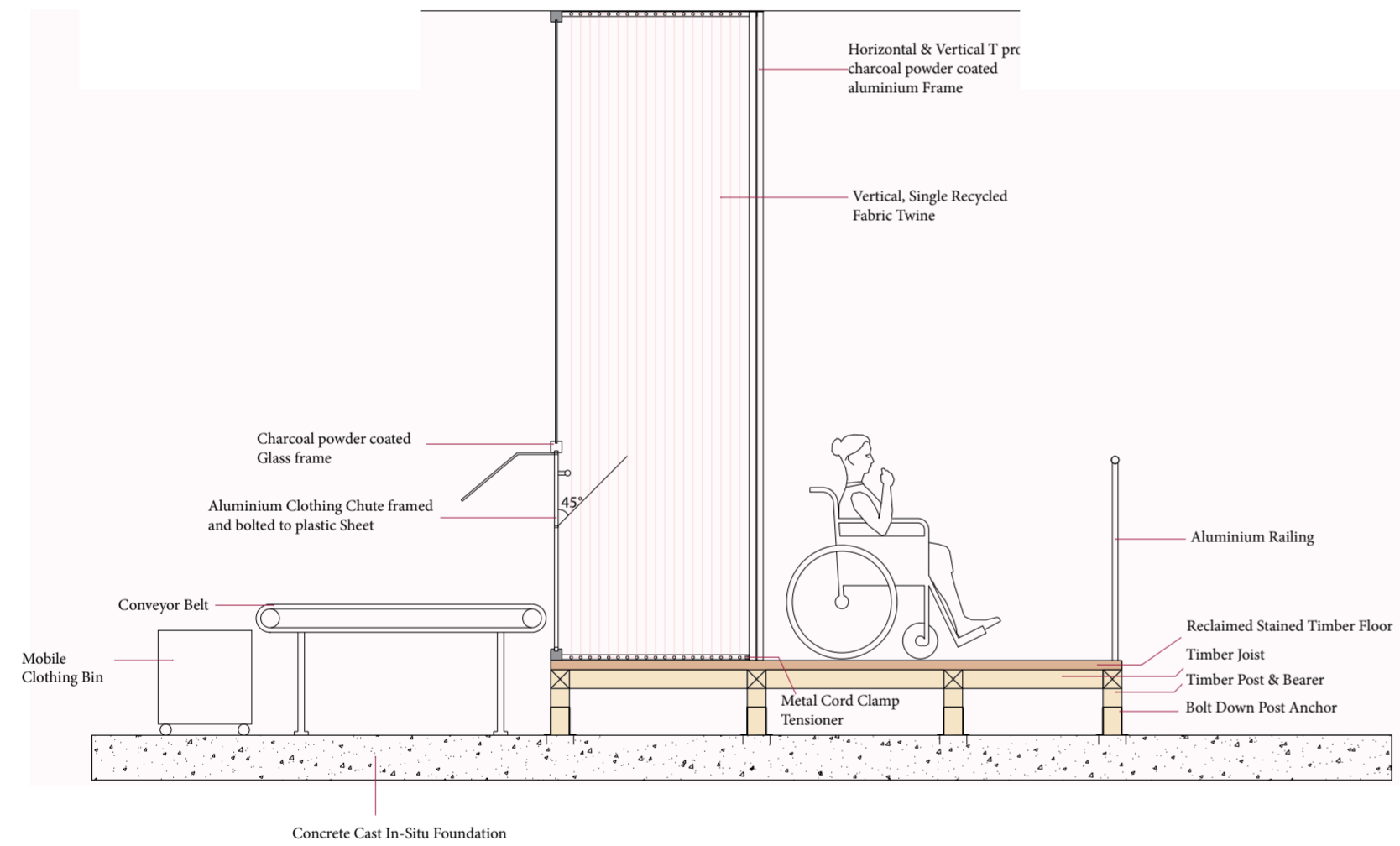


Donation Point Detail

The donation point is found on the ground floor opposite the entrances, it is a key focal point that creates curiosity and excitement to the space, encouraging donation. It uses parabolic recycled fabric twine that follows the 4 main colours in the space, pink, yellow, green and blue. This point in space can be crafted by the public through twisting and turning the desired coloured twine.



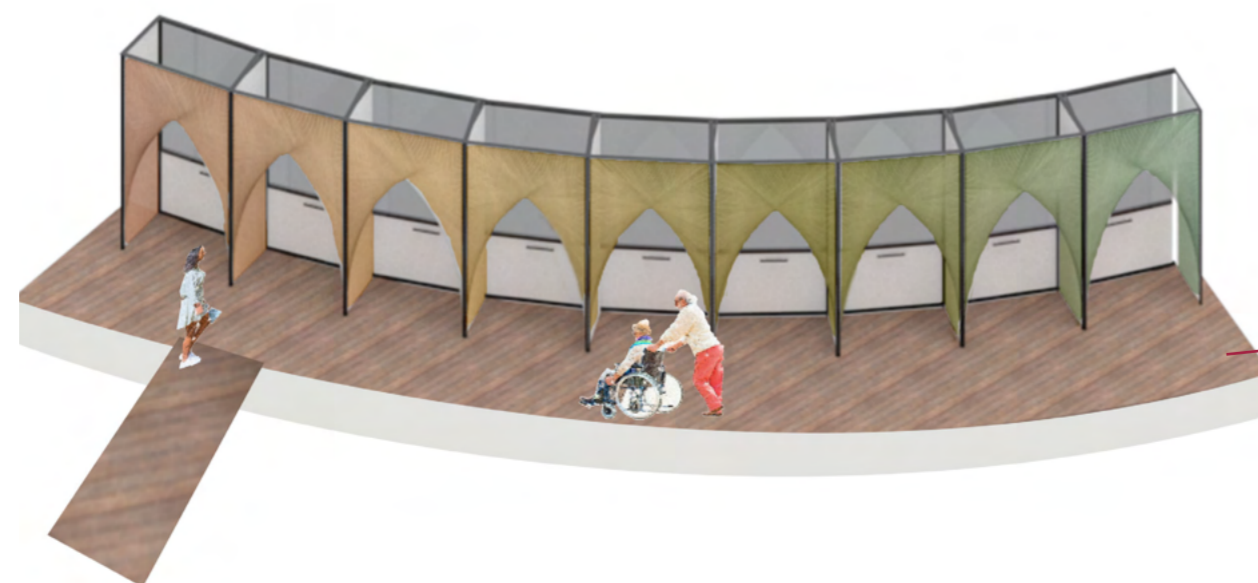
Not to Scale



Not to Scale

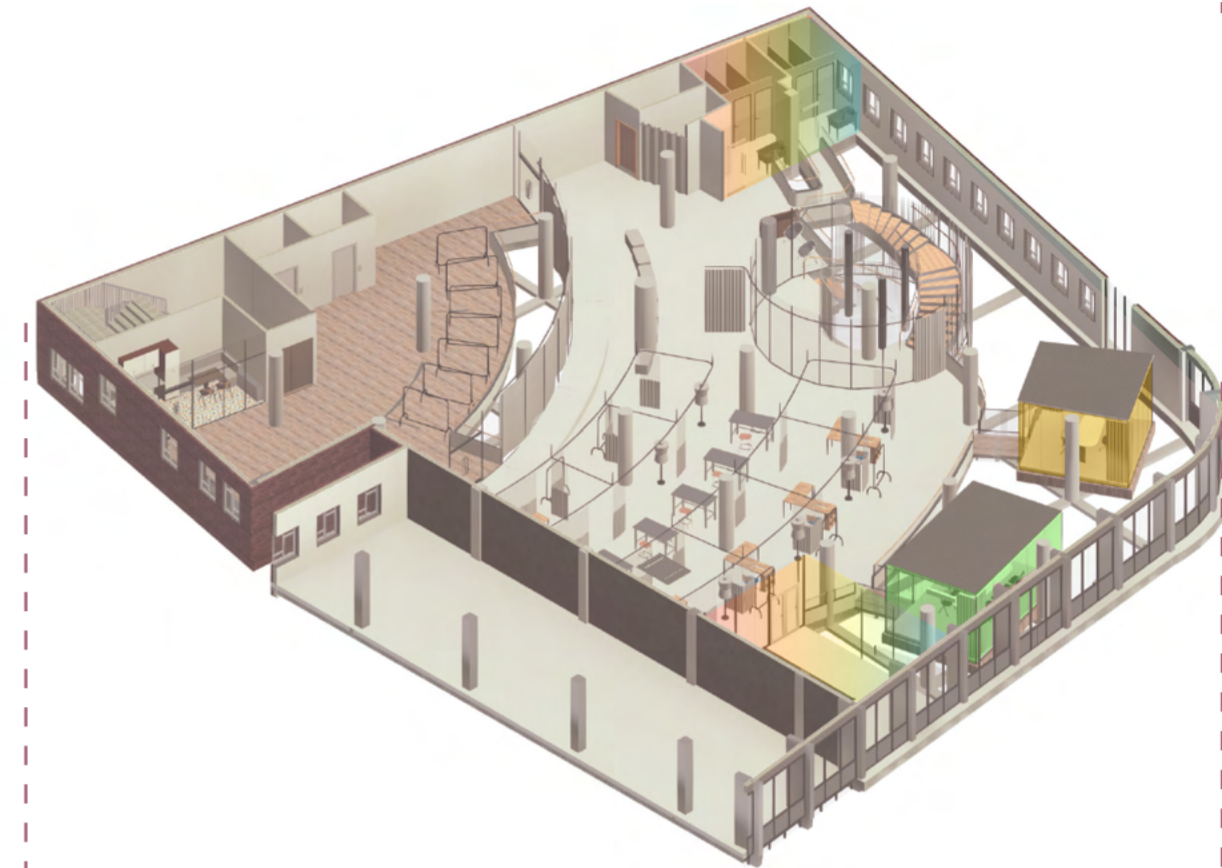


Collage of Warp & Weft Experiments



Sort & Select

Celebrate & Express



Clean

Learn & Play



Donate

Relax & Shop

