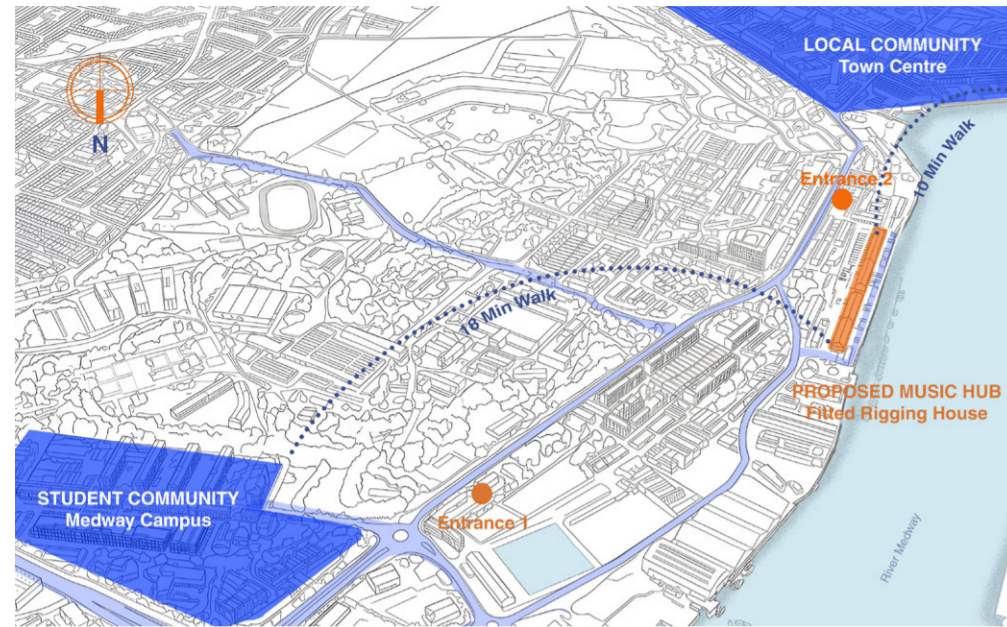


RIG

A MUSIC-LED SOCIAL HUB



OVERVIEW

Site + Community Connection

Situated between Medway's university campus and Chatham town centre, the Fitted Rigging House occupies a unique position within the Historic Dockyard. Despite a growing student population and active creative community, opportunities for informal social interaction, creative expression, and cultural exchange remain limited. RIG reimagines the heritage building as a music-led social hub, bringing together rehearsal, performance, entertainment, and social spaces to create a contemporary third place where students, local artists, and the wider public can connect through shared cultural experiences.



USERS

Shared Social Environment

MEDWAY STUDENTS

A place to socialise, collaborate, and engage in creative activities beyond academic life.

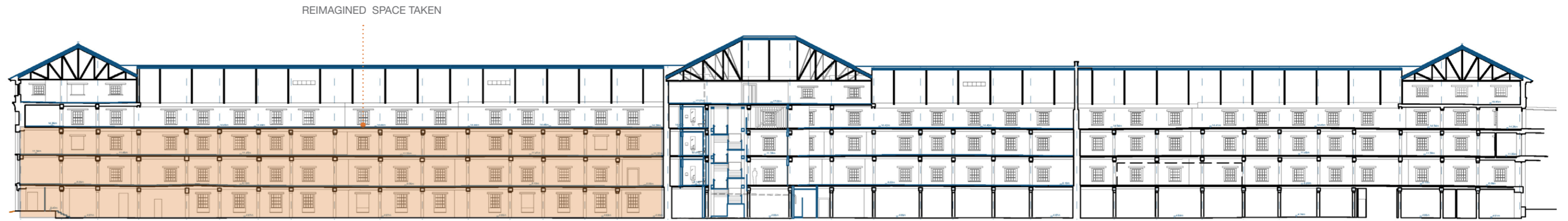
LOCAL ARTISTS

A platform to rehearse, perform, and connect with new audiences through shared cultural experiences.

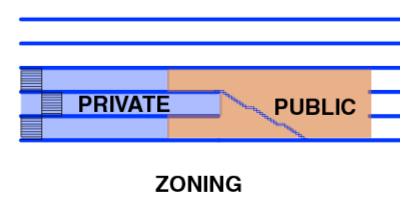
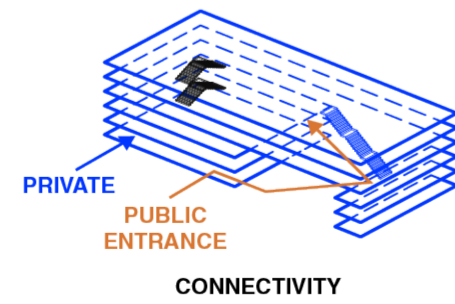
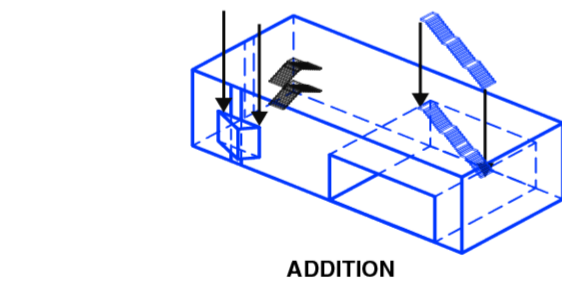
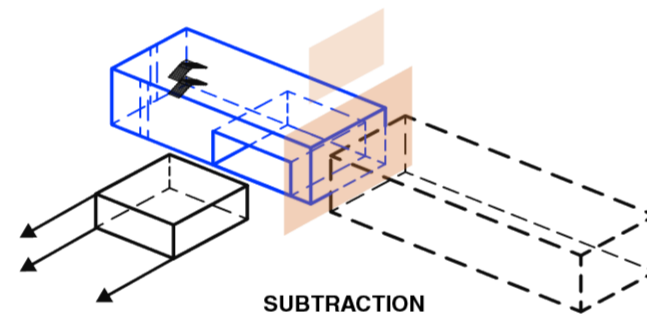
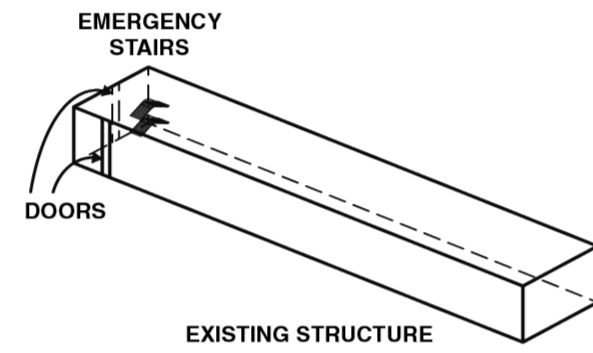
PUBLIC VISITORS

An accessible environment for music, social interaction, and engagement with Chatham's creative community.

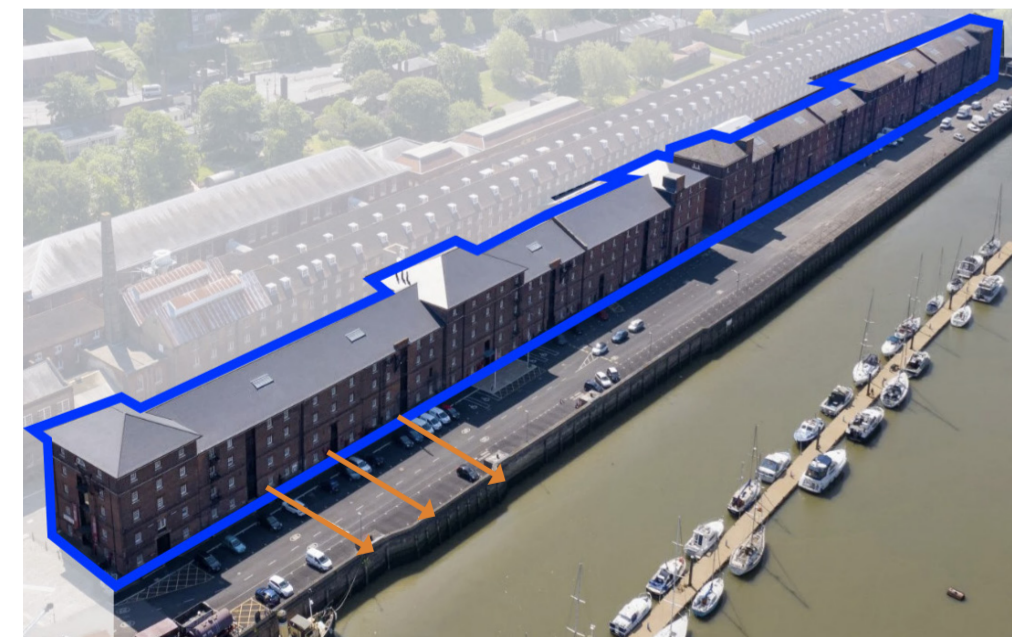
ORIGINAL BUILDING FOOTPRINT



FORM DEVELOPMENT



PROJECT VISION



PROJECT AIM

How can the Fitted Rigging House be reimagined as an active social interior for Chatham?

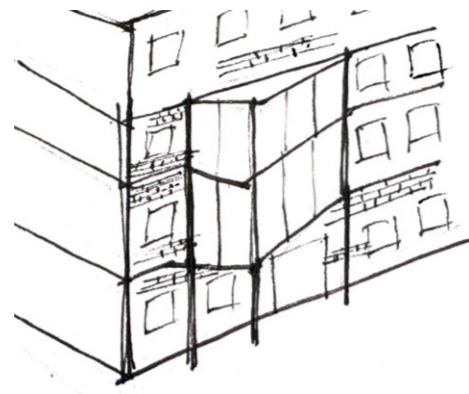
The project aims to reimagine the Fitted Rigging House as an active social interior that responds to the needs of Chatham's student population, local artists, and wider community. Using music as a catalyst for interaction, the proposal transforms

the historic industrial building into a destination for participation, recreation, creative practice, and cultural exchange. A combination of dedicated creative spaces and shared social environments encourages both individual expression and collective experiences, supporting new connections while celebrating the building's heritage and waterfront setting.

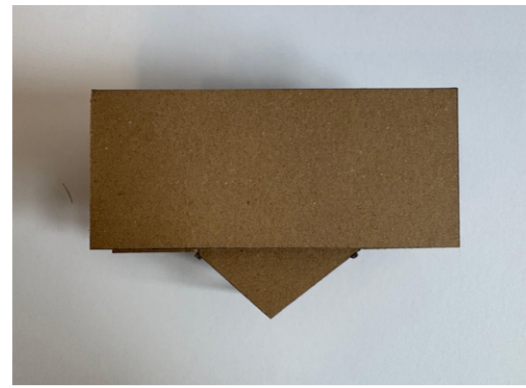
DESIGN DEVELOPMENT

Key Design Moves

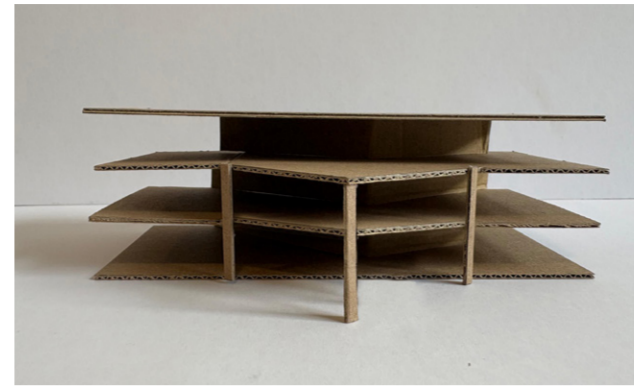
1. Open floor plates to strengthen visual connections between activities and encourage interaction across levels.
2. Introduce a central stair and slide as social connectors, creating movement and informal encounters throughout the building.
3. Pair active and quieter programmes strategically to balance acoustic requirements while maintaining engagement between spaces.
4. Incorporate a waterfront viewing deck adjacent to the social areas, activating the existing waterfront doors and strengthening the relationship between the building and its surrounding context.



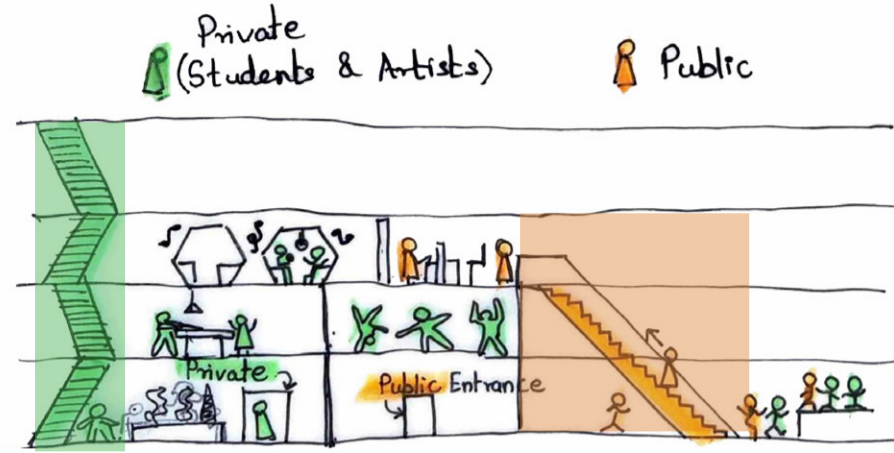
Initial Sketch



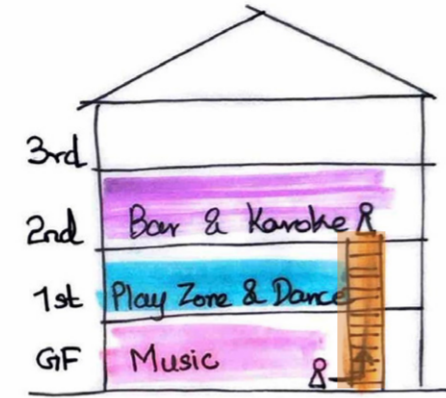
Massing Development Model (Top View)



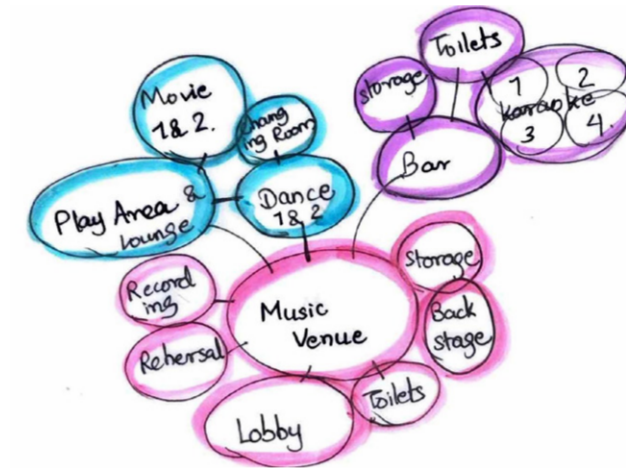
Massing Development Model (Front View)



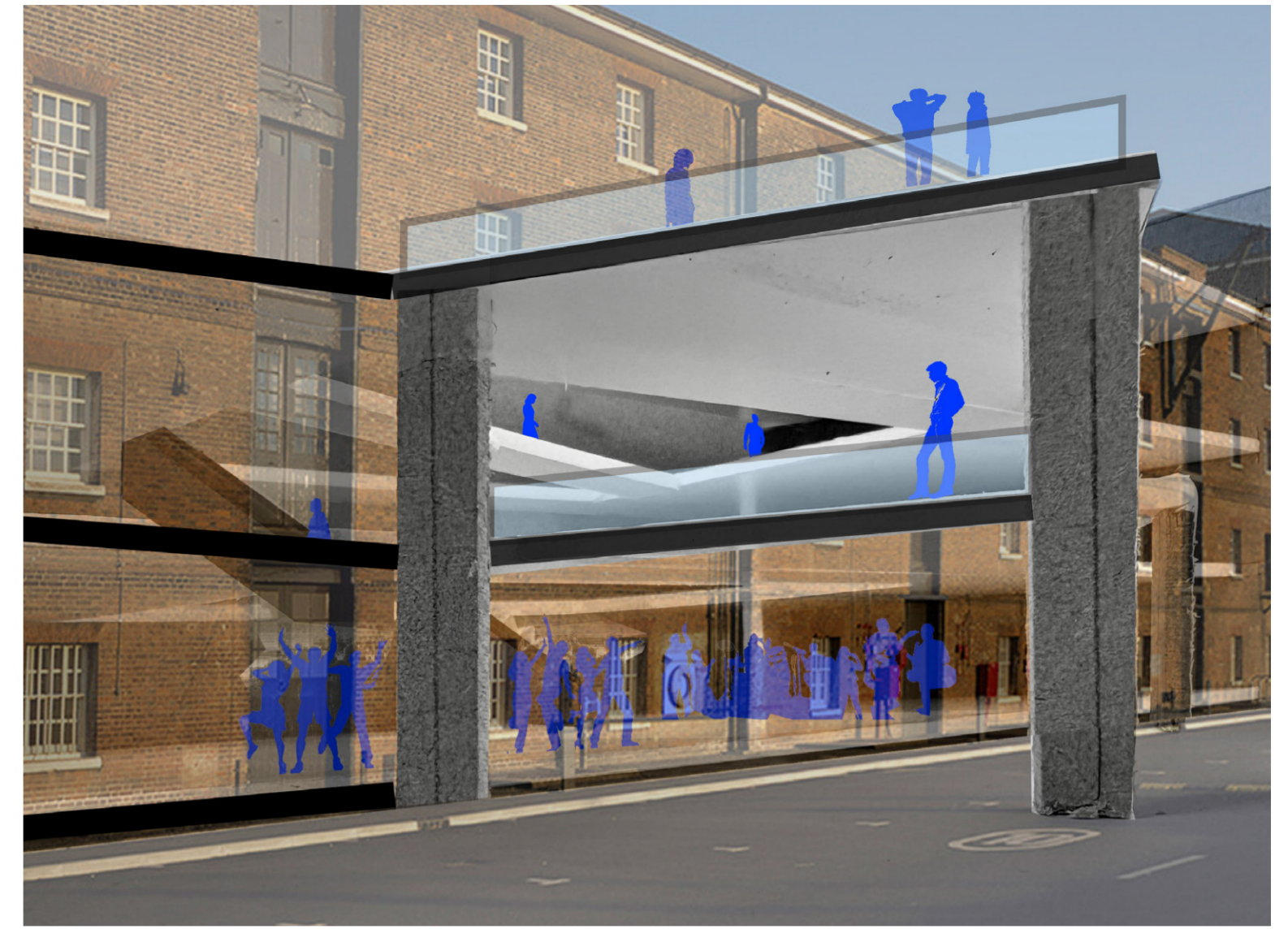
Programme Distribution & User Zoning



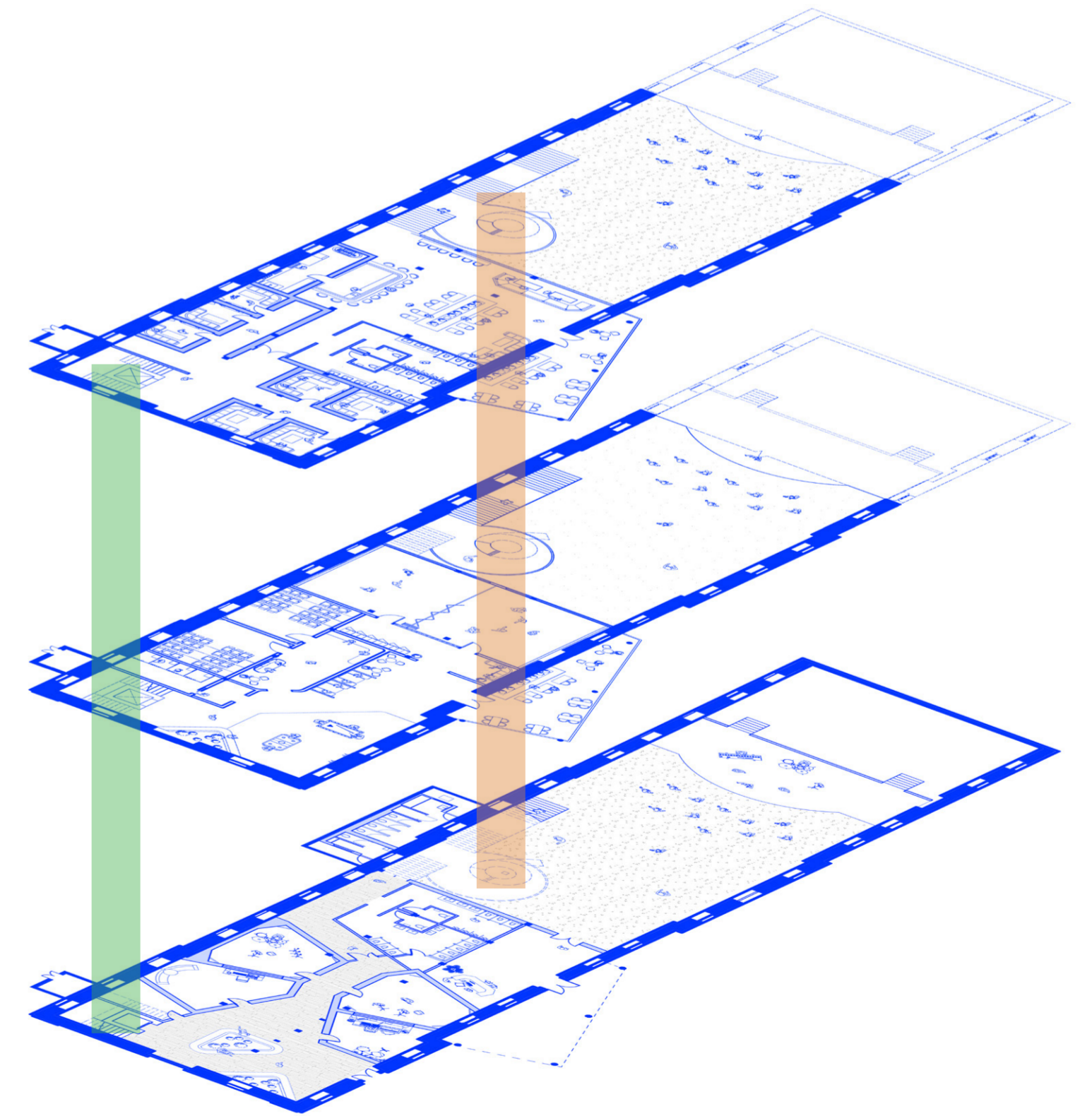
Vertical Programme Organisation



Bubble Diagram



WATERFRONT CONNECTION



EXPLODED AXONOMETRIC

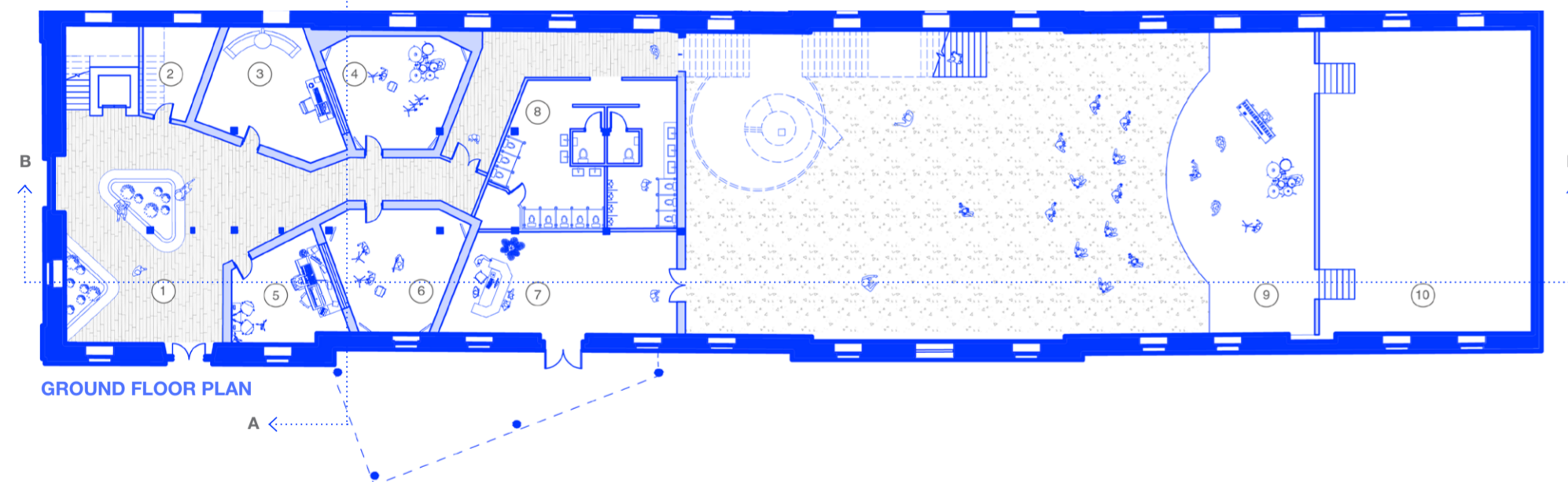
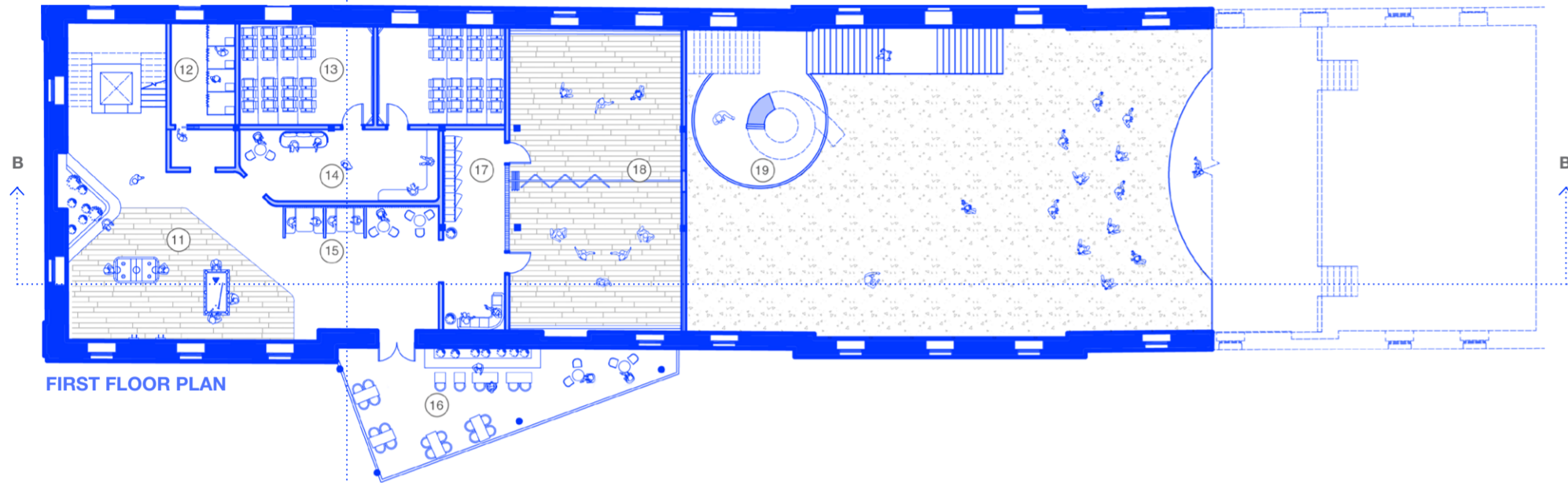
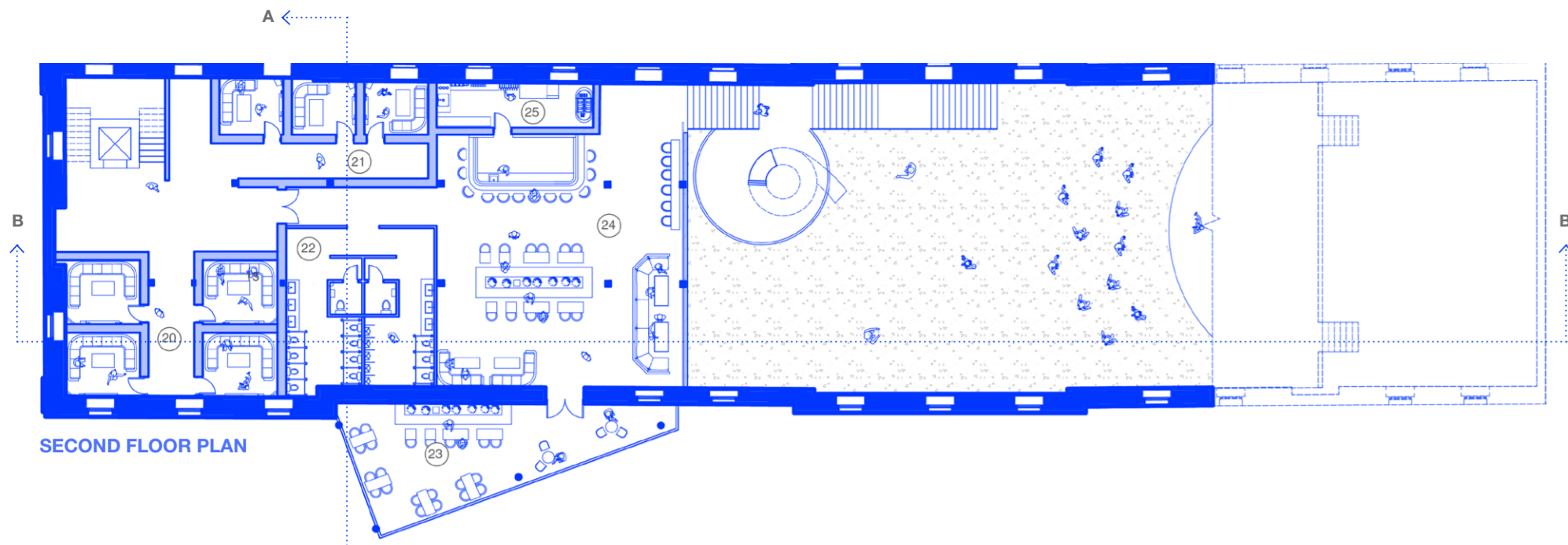
SPATIAL STRAGETY

Acoustic Contrast + Vertical Connection

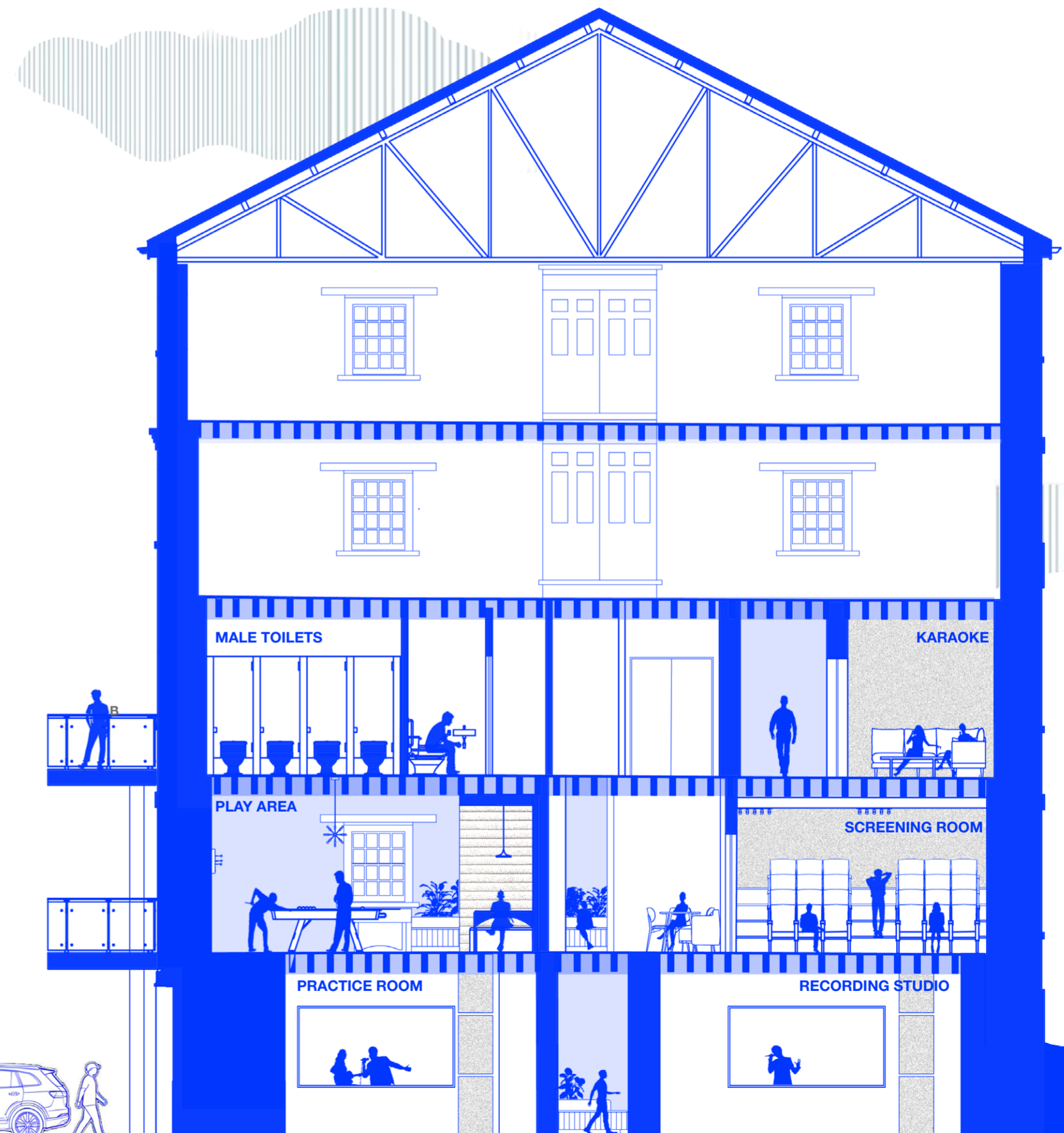
The spatial arrangement responds to both acoustic control and social interaction across the building. Opposing programmes are carefully paired together to support one another while maintaining balance within the structure.

Highly active spaces, including the venue, bar, and social areas, are positioned alongside acoustically controlled environments such as recording studios and karaoke rooms with thicker wall separation.

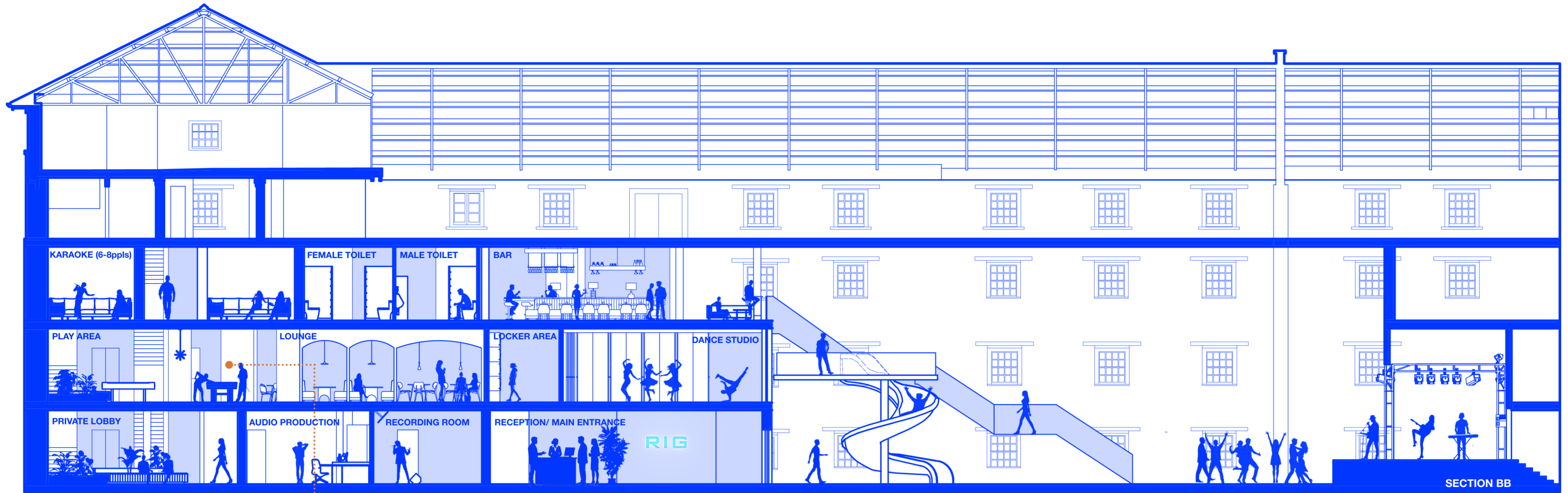
This contrast allows energetic and noise-sensitive spaces to coexist while remaining connected through vertical circulation and shared spatial moments.



- 1. Entrance Lobby
- 2. Storage Room
- 3. Rehearsal Room
- 4. Recording Studio (live room)
- 5. Audio Production & Composition Room
- 6. Practice Room
- 7. Reception
- 8. Toilets (including accessible WC)
- 9. Performance Space
- 10. Backstage
- 11. Play Area
- 12. Changing Rooms
- 13. Screening Rooms
- 14. Waiting Lounge
- 15. Lounge
- 16. Viewing Deck
- 17. Lockers Area
- 18. Dance Studios
- 19. Viewing Deck With Spiral Slide
- 20. Karaoke Rooms (6-8 ppls)
- 21. Karaoke Rooms (3-4 ppls)
- 22. Toilets (including accessible WC)
- 23. Viewing Deck
- 24. Bar
- 25. Bar Storage



SECTION AA



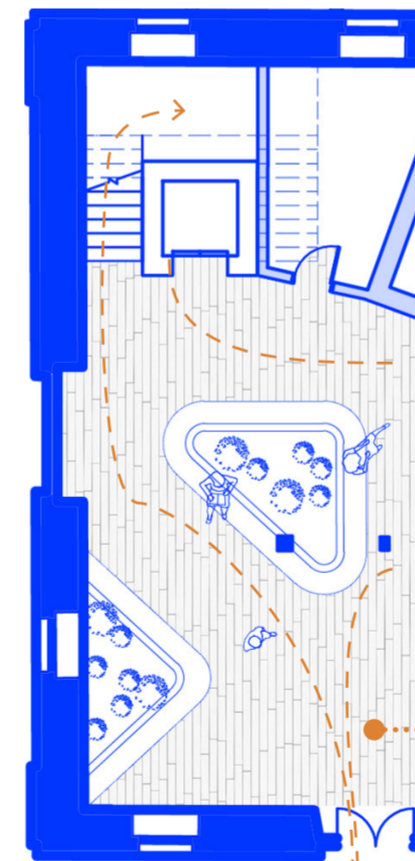
ATMOSPHERIC TRANSITION




Transition spaces are introduced between functions to create a gradual shift between activity levels and spatial conditions. Lounge, waiting, and supporting areas act as intermediate zones that prepare users before entering more enclosed or immersive environments.

For example, the movie space is designed as a darker and enclosed environment, while open lounge areas create a softer transition between bright and immersive spaces. Similarly, waiting and locker areas support movement into the dance studio while reducing abrupt spatial change.



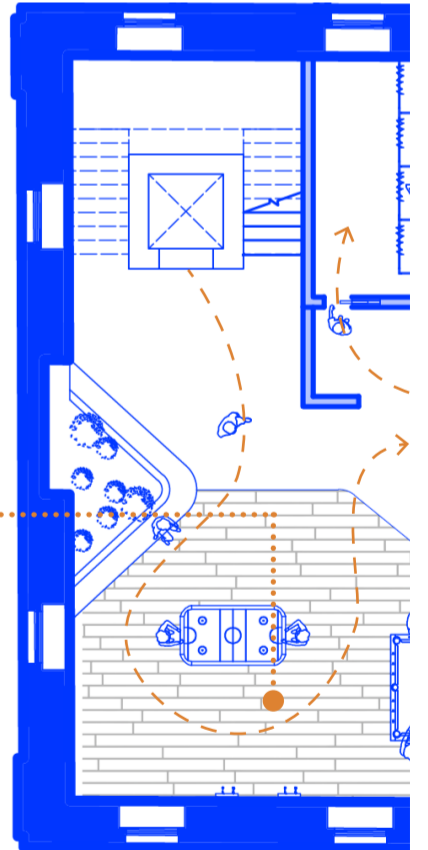
PLAY AREA



-  **Built-in Cushion**
Soft woven fabric finish for comfort and longer use.
-  **Integrated Planter**
Built-in planting to soften the industrial character and introduce natural elements.
-  **Oat Laminate Flooring**
Durable and easy-to-maintain surface selected for high-traffic social spaces.



SECTIONAL PERSPECTIVE VIEW (GF + 1F)



- 01 Visibility**
Open sightlines maintain visual connections between activities and improve spatial awareness across the hub.
- 02 Interaction**
Integrated seating along circulation routes creates informal gathering points and encourages user interaction.
- 03 Experience**
Material contrast and soft landscape elements are introduced to reduce the industrial character and improve spatial comfort.

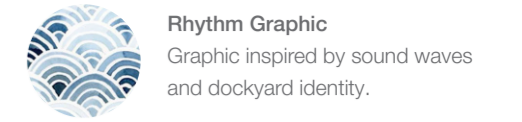
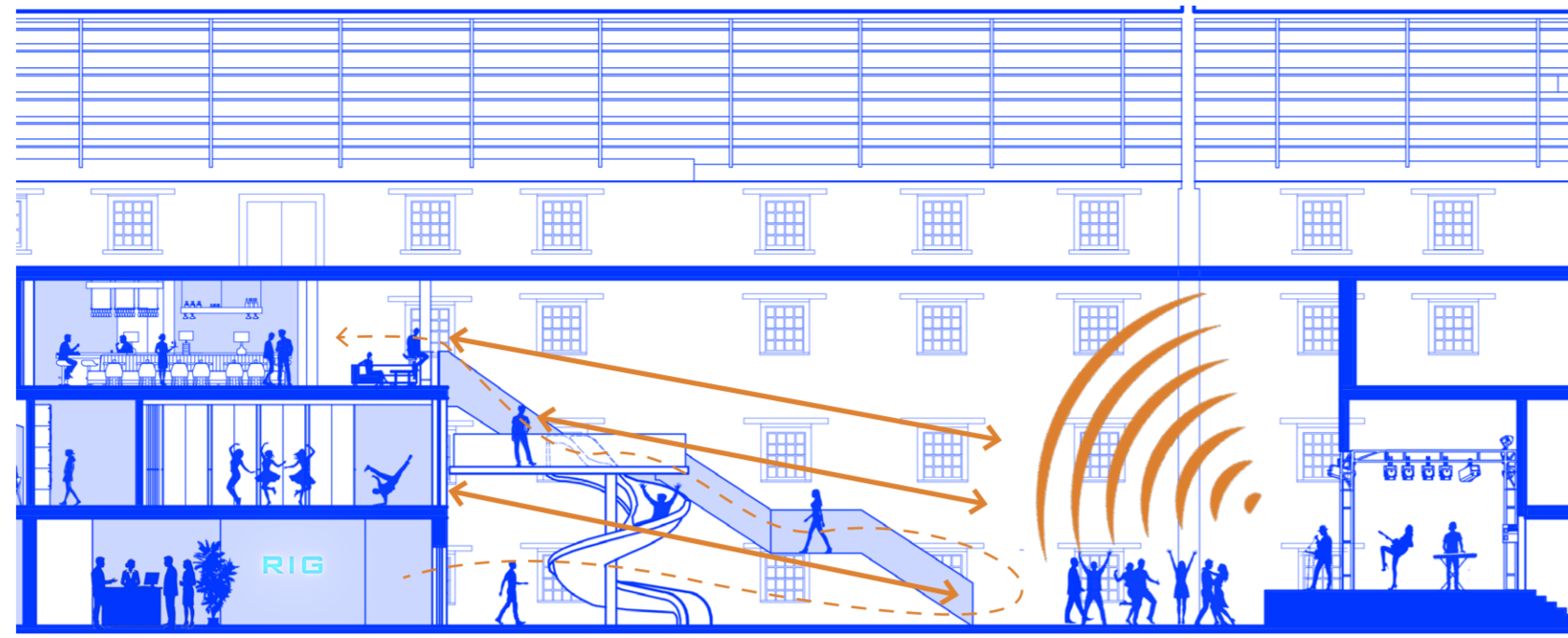
THE HEART OF THE MUSIC HUB

Spatial Intent + User Experience

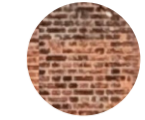
The music venue forms the social core of the project, creating visual connections across multiple floors and encouraging users to engage with surrounding activities.

The central space allows users to experience different levels of participation, from active involvement within the venue to passive observation from circulation routes and social spaces. Visual permeability between floors strengthens awareness of activities throughout the building while maintaining individual spatial identities.

Transition spaces and intermediate zones are integrated between functions to create a gradual shift in atmosphere and activity level. This supports movement through the building while maintaining spatial continuity and reducing abrupt changes between experiences.



Rhythm Graphic
Graphic inspired by sound waves and dockyard identity.



Retained Brick
Existing brickwork retained to preserve site character



Sofa Lounge
Upholstered seating for comfort and acoustic absorption.

