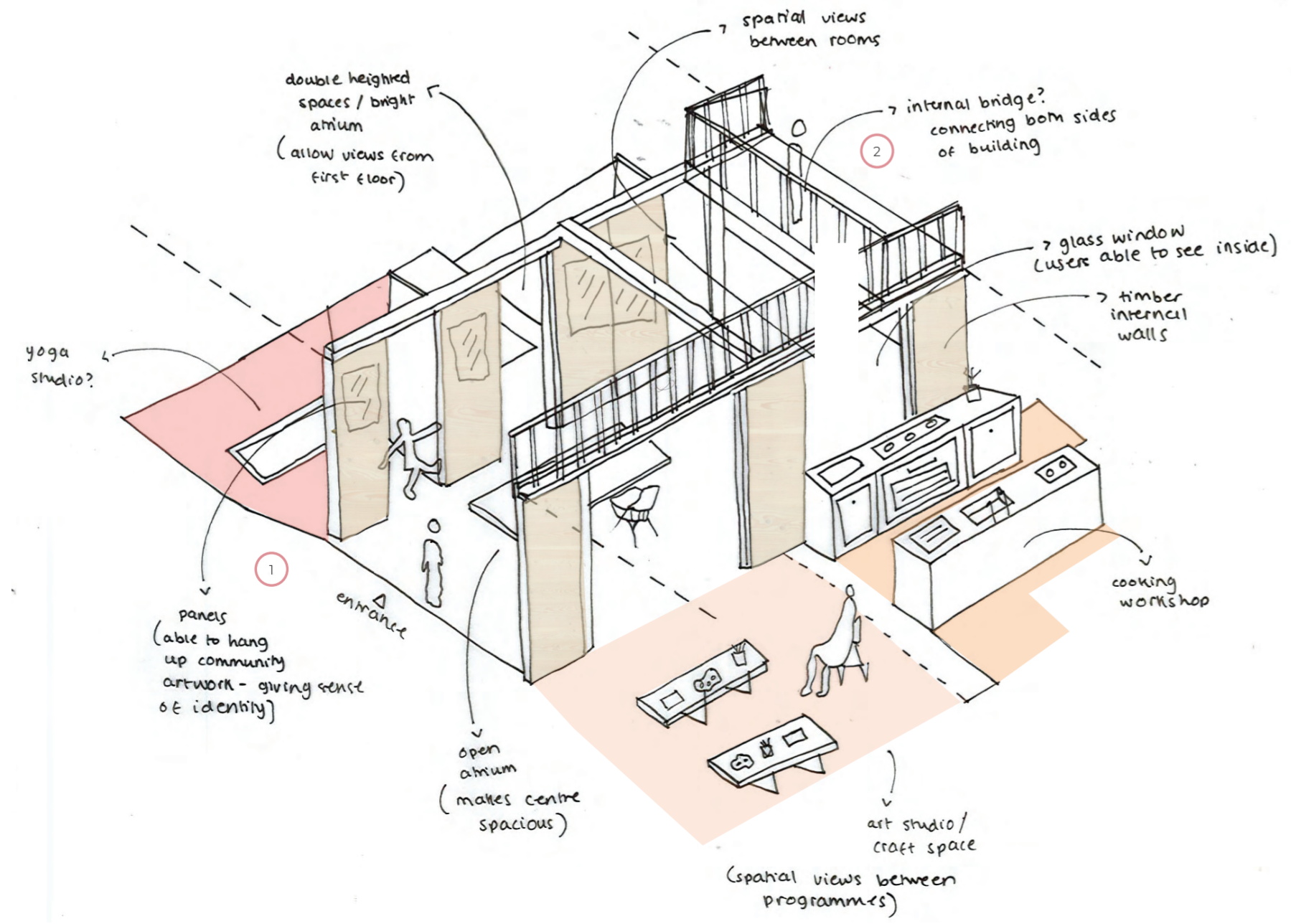
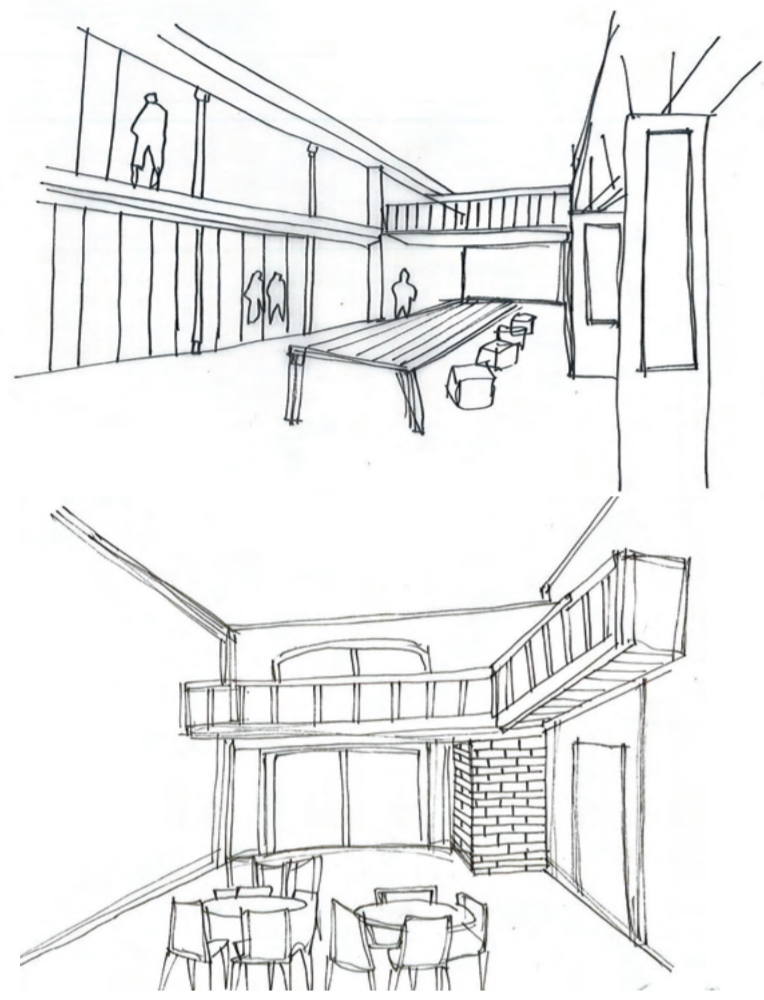


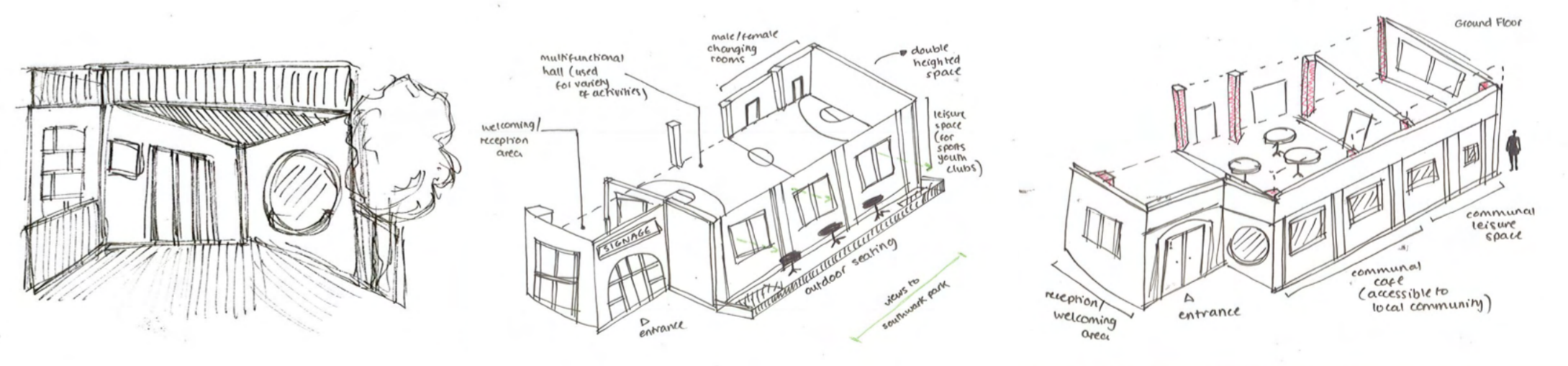
THE COLLABORART AND ACTIVE COMMUNITY CENTRE

PROJECT BRIEF

The project brief and design of the community hub is centred around principles of social justice, inclusion and equity. It aims to provide workshops, youth clubs, leisure facilities, consulting rooms and a community cafe to promote social engagement, cohesion and reduce anti-social behaviour.



CONCEPT SKETCHES



This project considers active circulation, movement and multi-use spaces to reflect the open and welcoming programmes happening inside the spaces.

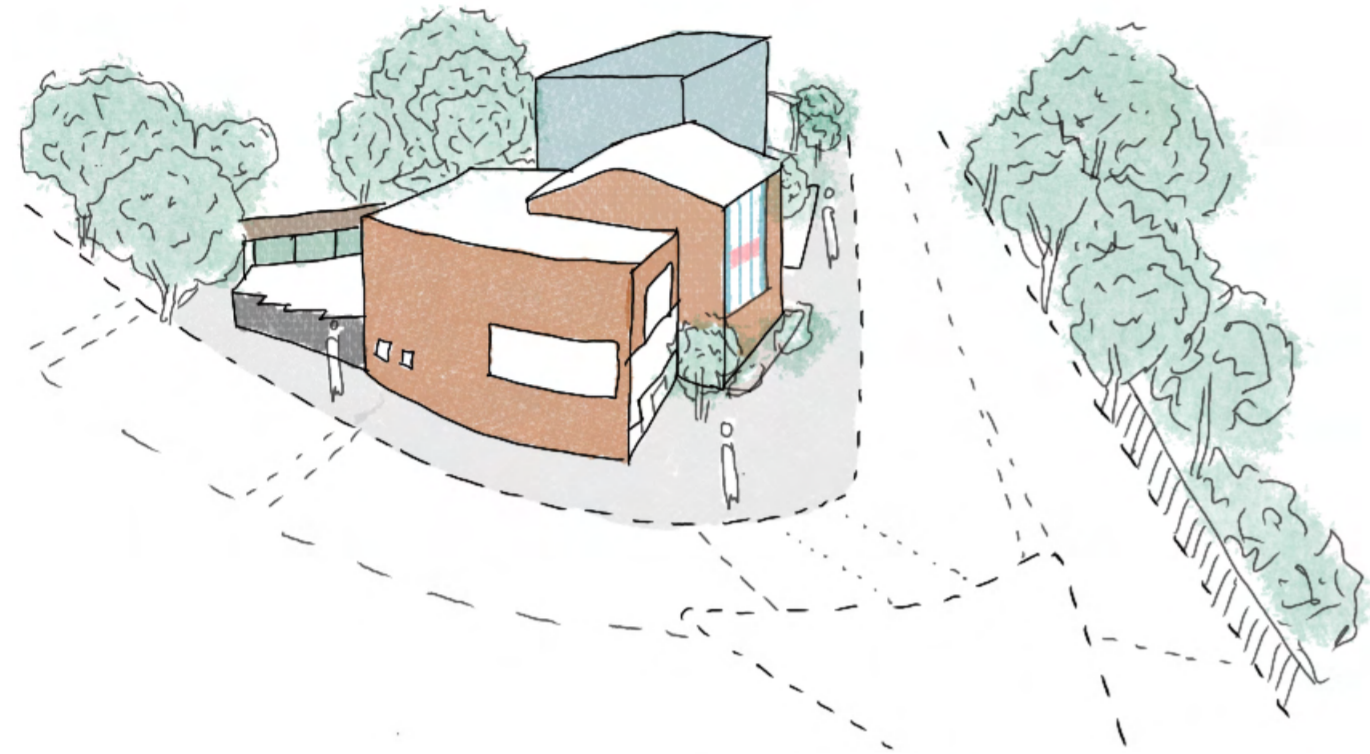
THE COLLABORART AND ACTIVE COMMUNITY CENTRE

ART FOR INCLUSION, ACTIVE FOR CHANGE

SITE

Site: Old Red Lions Club, Hawkstone Road, Southwark, London

The Old Red Lions Club project adapts an underused building to serve the Southwark community. The site was selected due to its street visibility, increasing awareness and promotion of a new social hub that encourages community engagement.



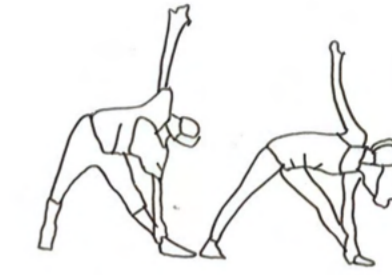
PROGRAMME BRIEF



Rock Climbing



Cooking Workshop



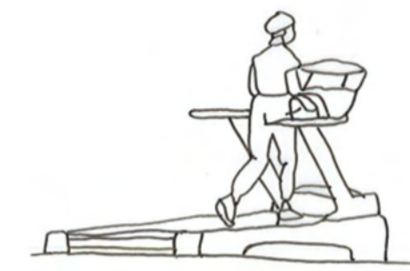
Yoga Classes



Communal Cafe



Arts and Crafts Workshop



Communal Gym

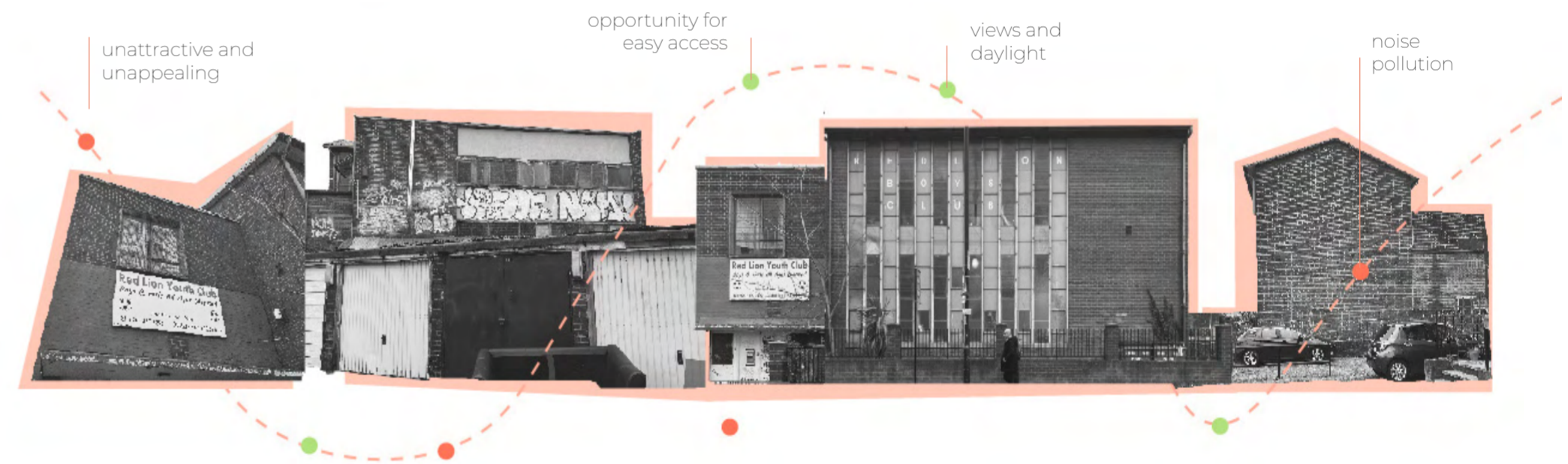


Mending Workshop



Food Bank

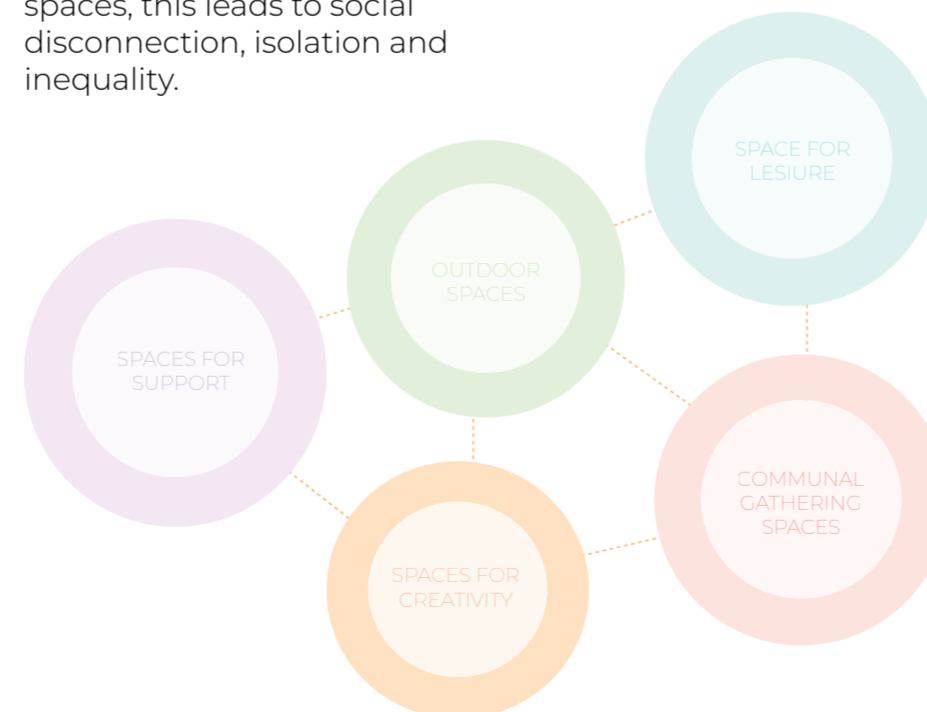
OPPORTUNITIES AND CONSTRAINTS



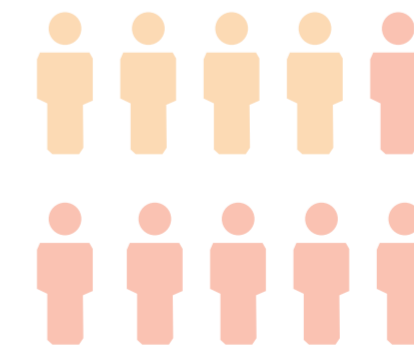
INITIAL COLLAGE

As Southwark lacks communal spaces, this leads to social disconnection, isolation and inequality.

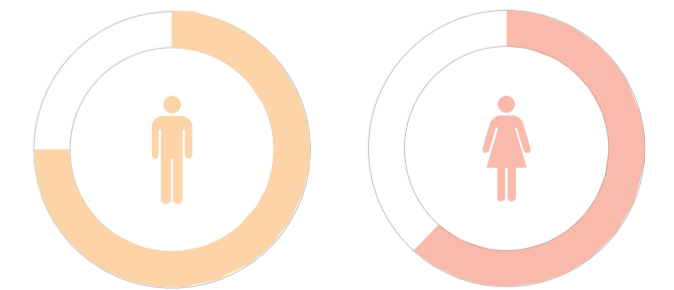
LOCAL POPULATION DATA



Southwark's population projected to increase 20% by 2030



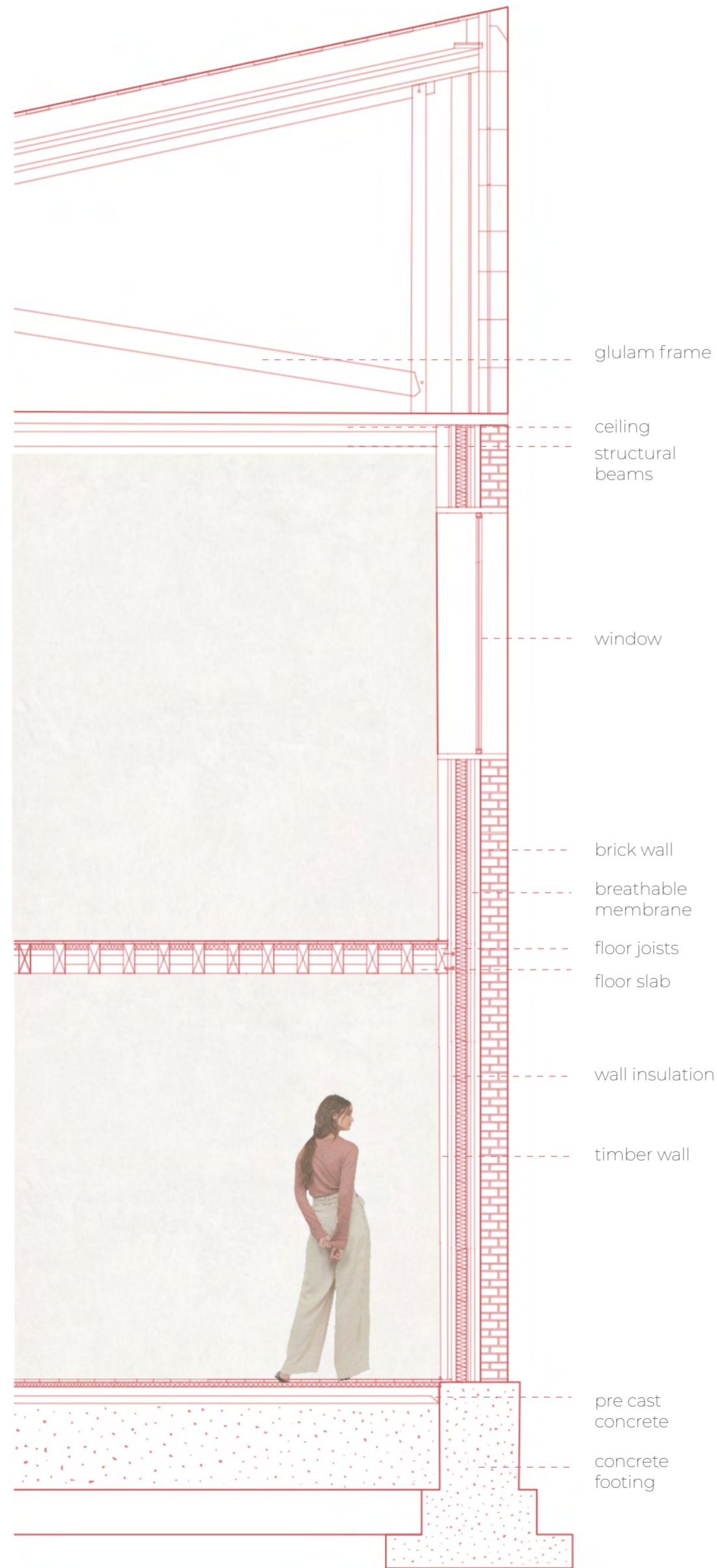
4 / 10 residents live in the most deprived communities nationally



71% (men) and 55% (women) Southwark's population are active

THE COLLABORART AND ACTIVE COMMUNITY CENTRE

FINAL PROPOSAL



- glulam frame
- ceiling structural beams
- window
- brick wall
- breathable membrane
- floor joists
- floor slab
- wall insulation
- timber wall
- pre cast concrete
- concrete footing

The construction drawing details the assembly of the existing masonry structure with the new CLT material.



INTERIOR



FINAL GROUND PLAN



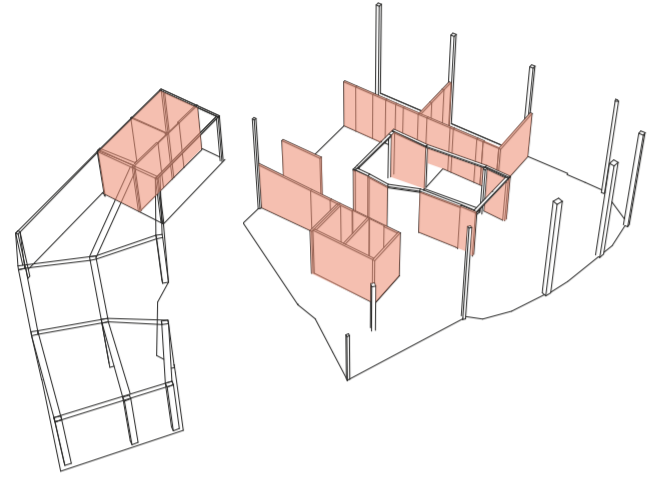
FINAL FIRST FLOOR PLAN



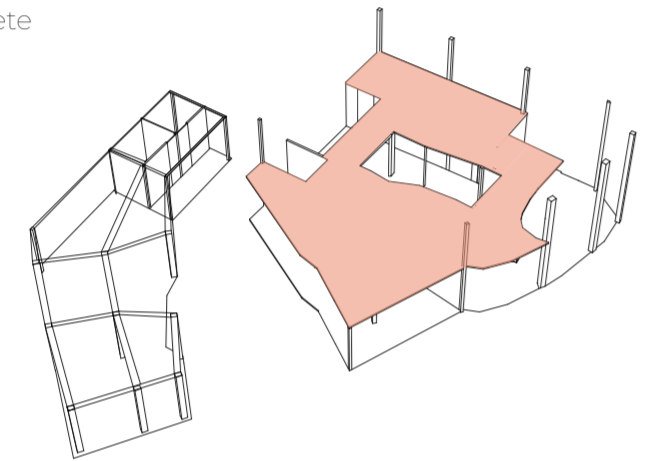
THE COLLABORART AND ACTIVE COMMUNITY CENTRE

FINAL PROPOSAL

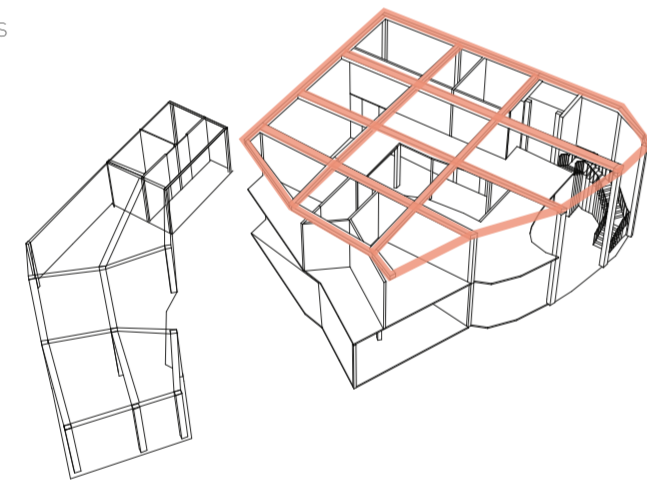
timber walls



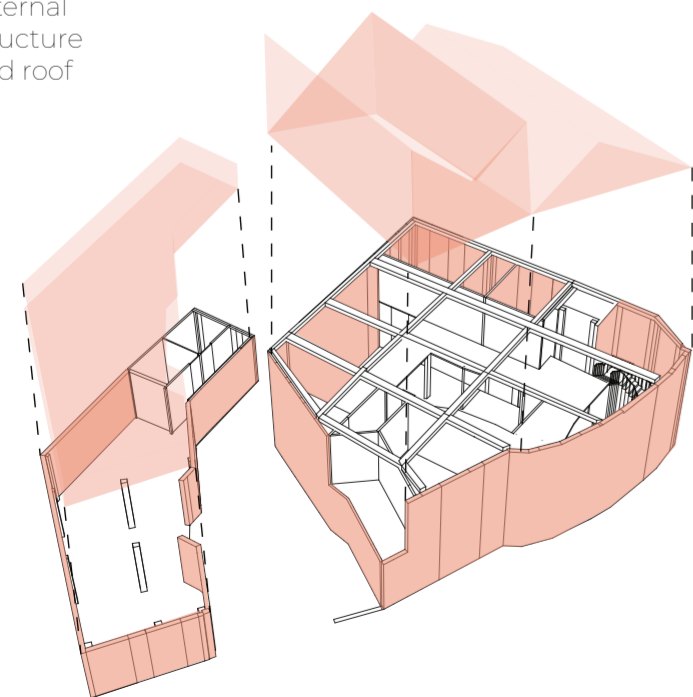
concrete floor slab



roof beams



external structure and roof



FRONT SECTION



FRONT ELEVATION



Through its diverse programs, the communal hub aims to nurture a connected community, promote equality, and empower marginalised groups in Southwark.