

Luminous Acoustics - Exploring the Symbiosis of Light and Sound

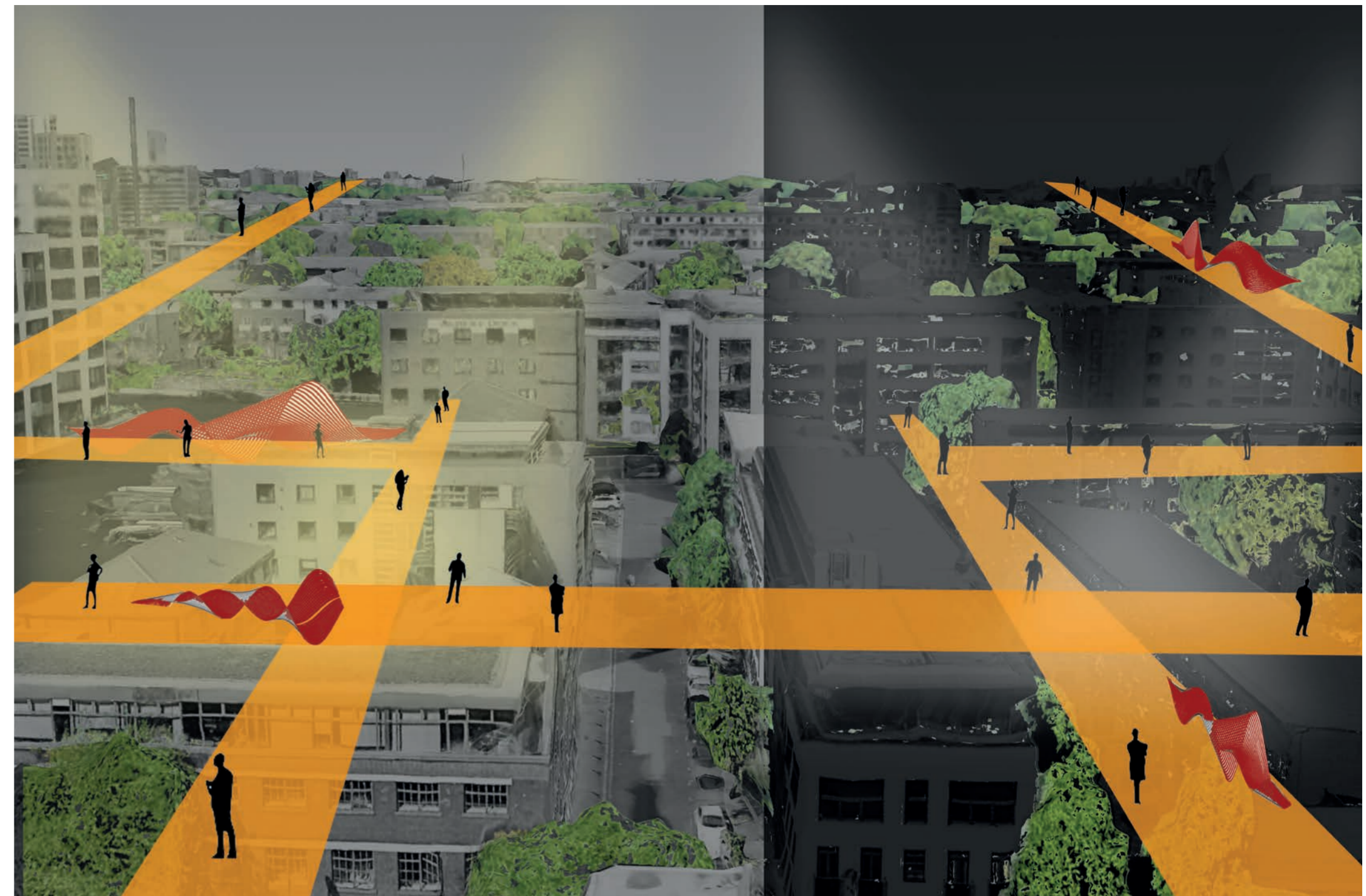
Addressing issues of future spaces and possibilities, the designed space, located within the London Canal Museum creates a healing environment, featuring a parasite that sits within the building and illuminates the space. Emphasis is placed on light and sound therapy.

Luminous Acoustics, a space within a therapeutic space, the future of mental health and well-being. In response to the given brief and the consideration of social and political shifts and attitudes towards mental health and its treatment, the designed space creates an experience that brings people of a wider audience range together. Through a sustainable approach with regards to re-use and re-purpose and using the surrounding environment, specifically sunlight and canal water frequencies, the proposed program creates a healing intervention that replicates a therapeutic space in a more futuristic way.

Luminous Acoustics intends to modernize the interior and boost the profit intake of the existing Canal Museum.



Canal side elevation of the Site: London Canal Museum



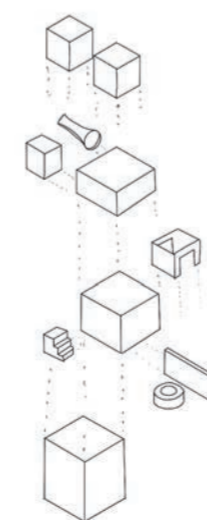
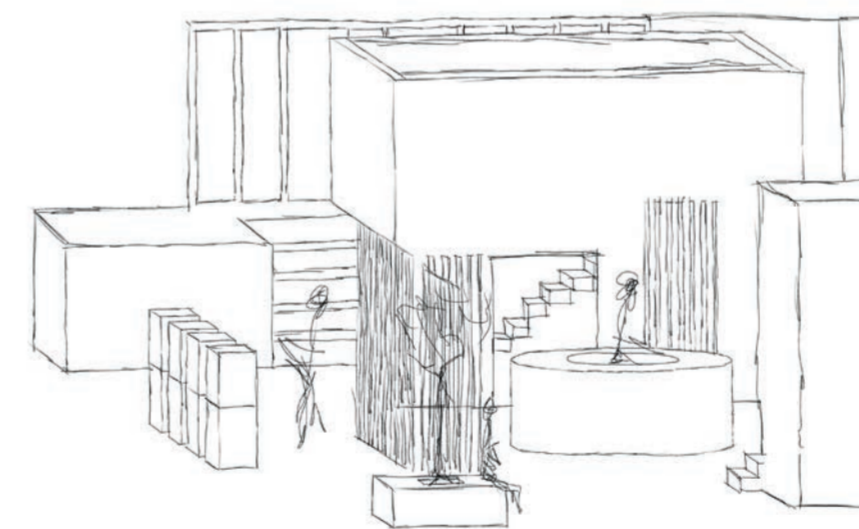
Concept Collage indicating light and sound



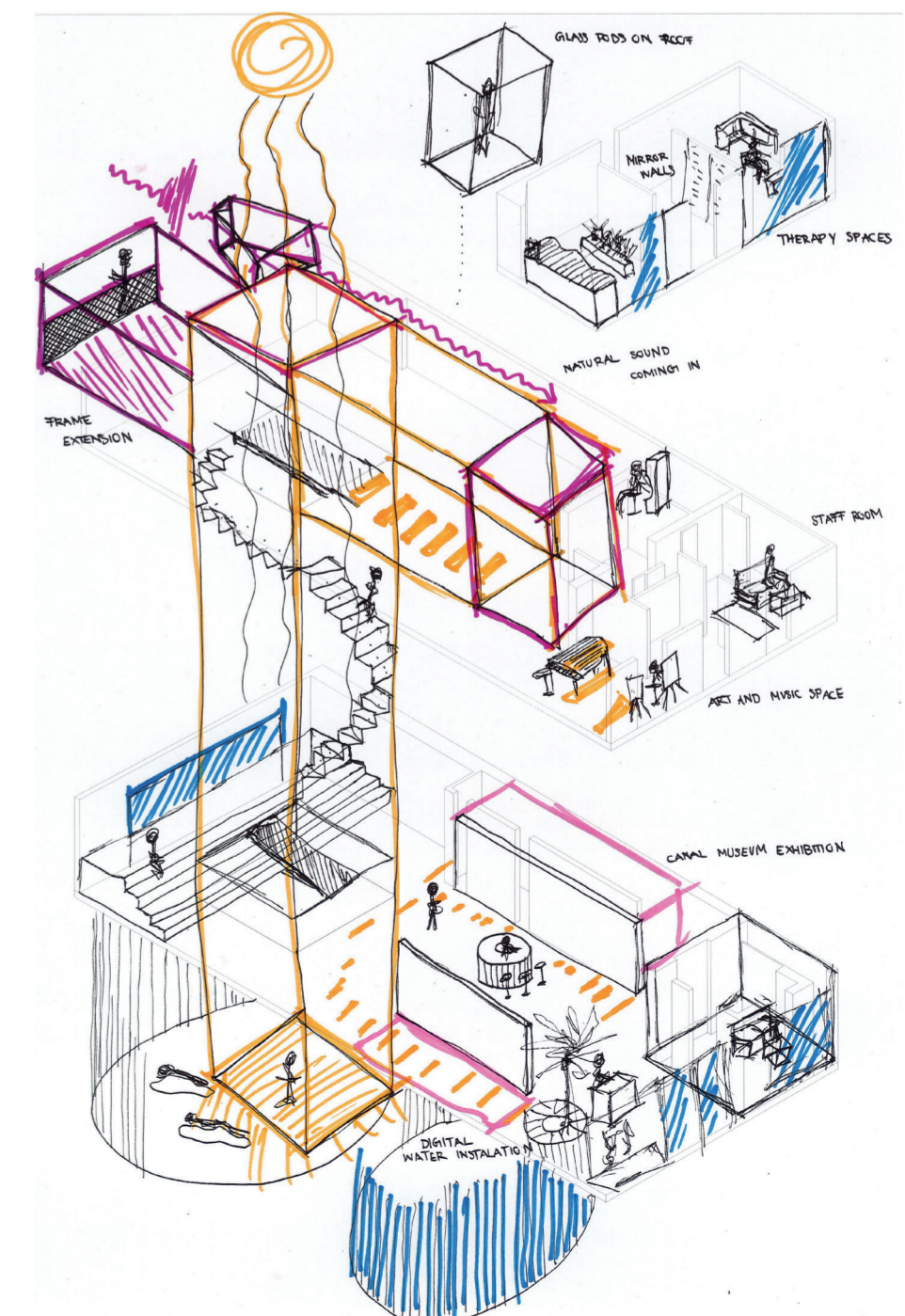
3D Physical Model Making

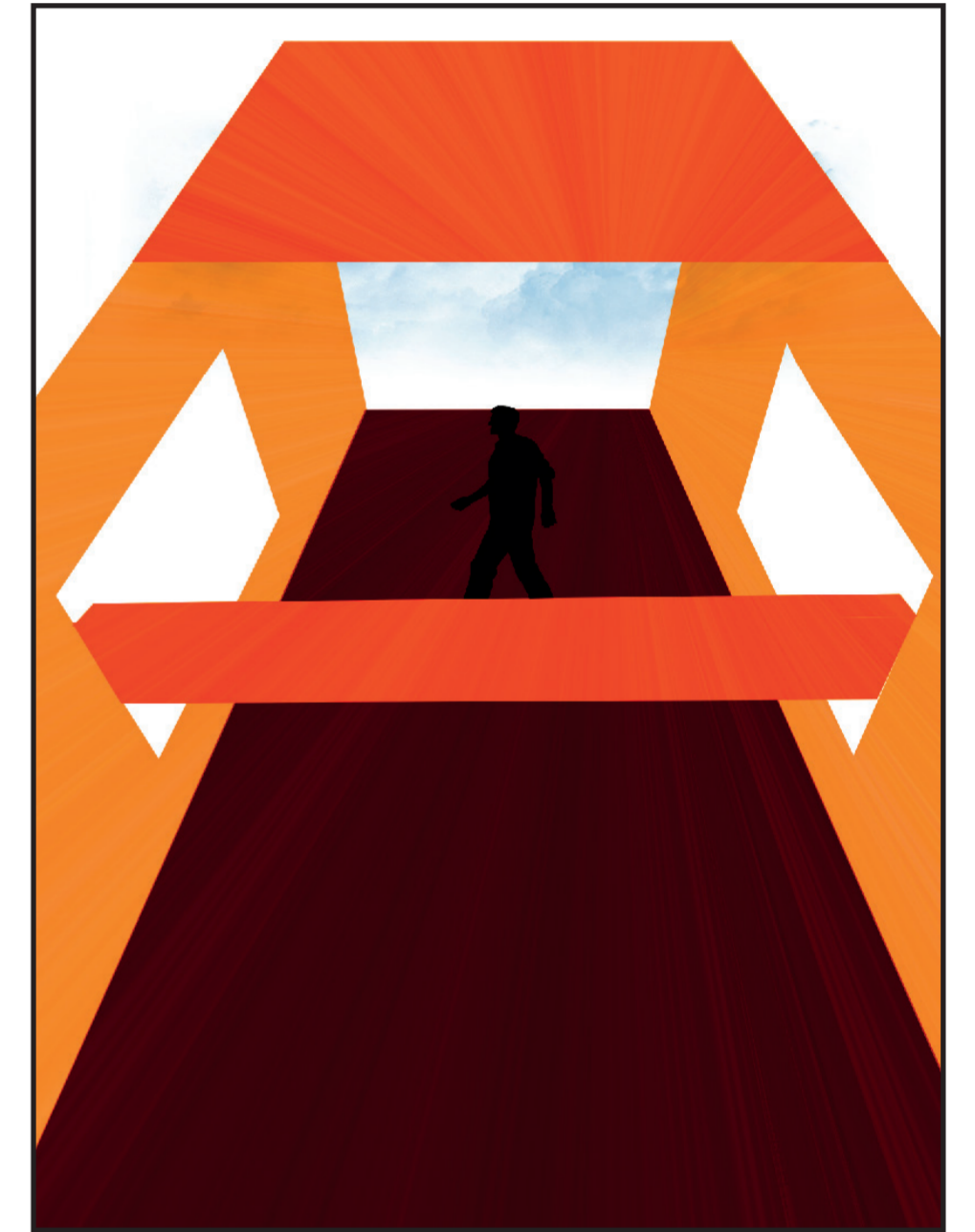
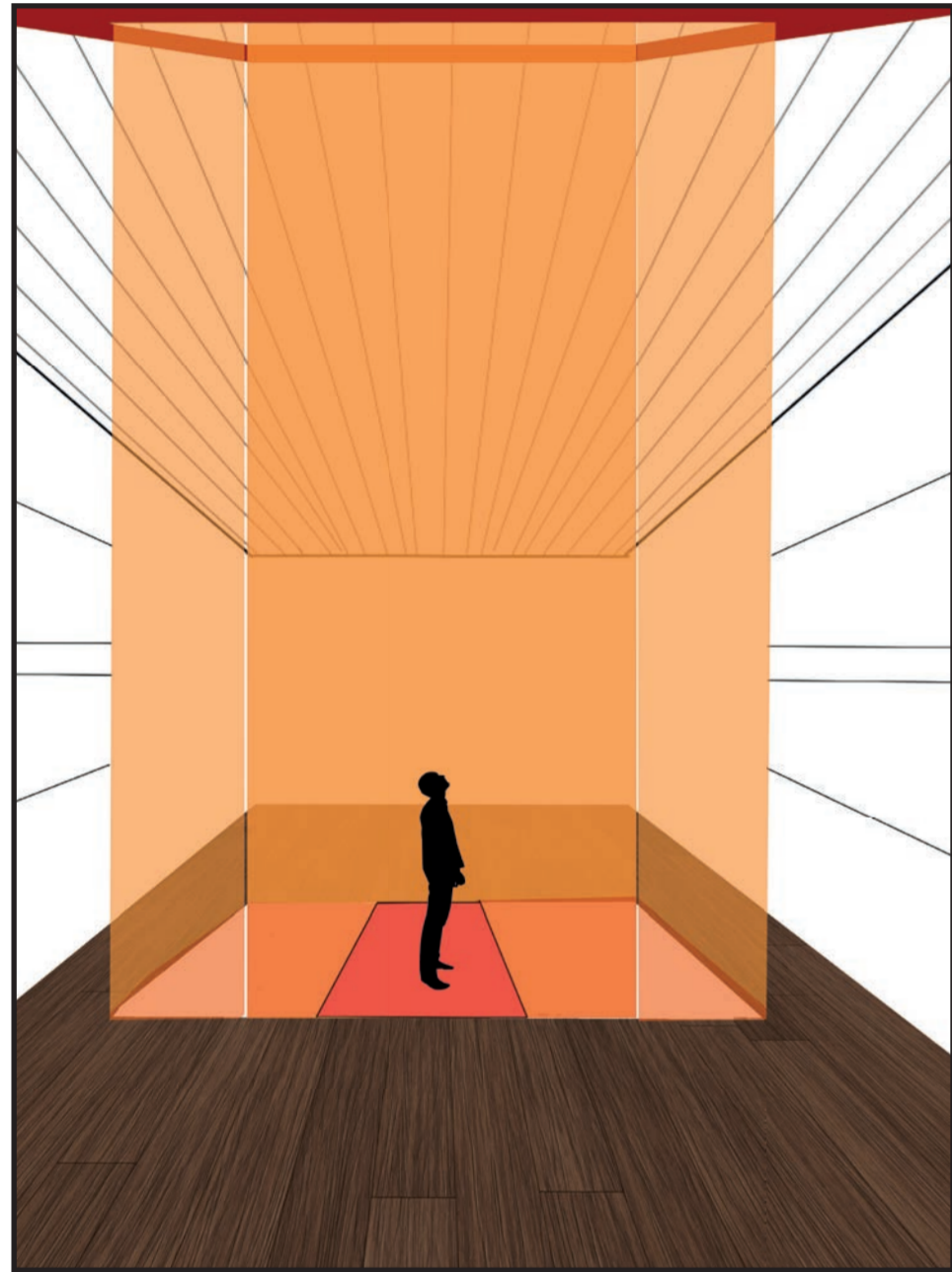


Perspective View: Ground floor and first floor



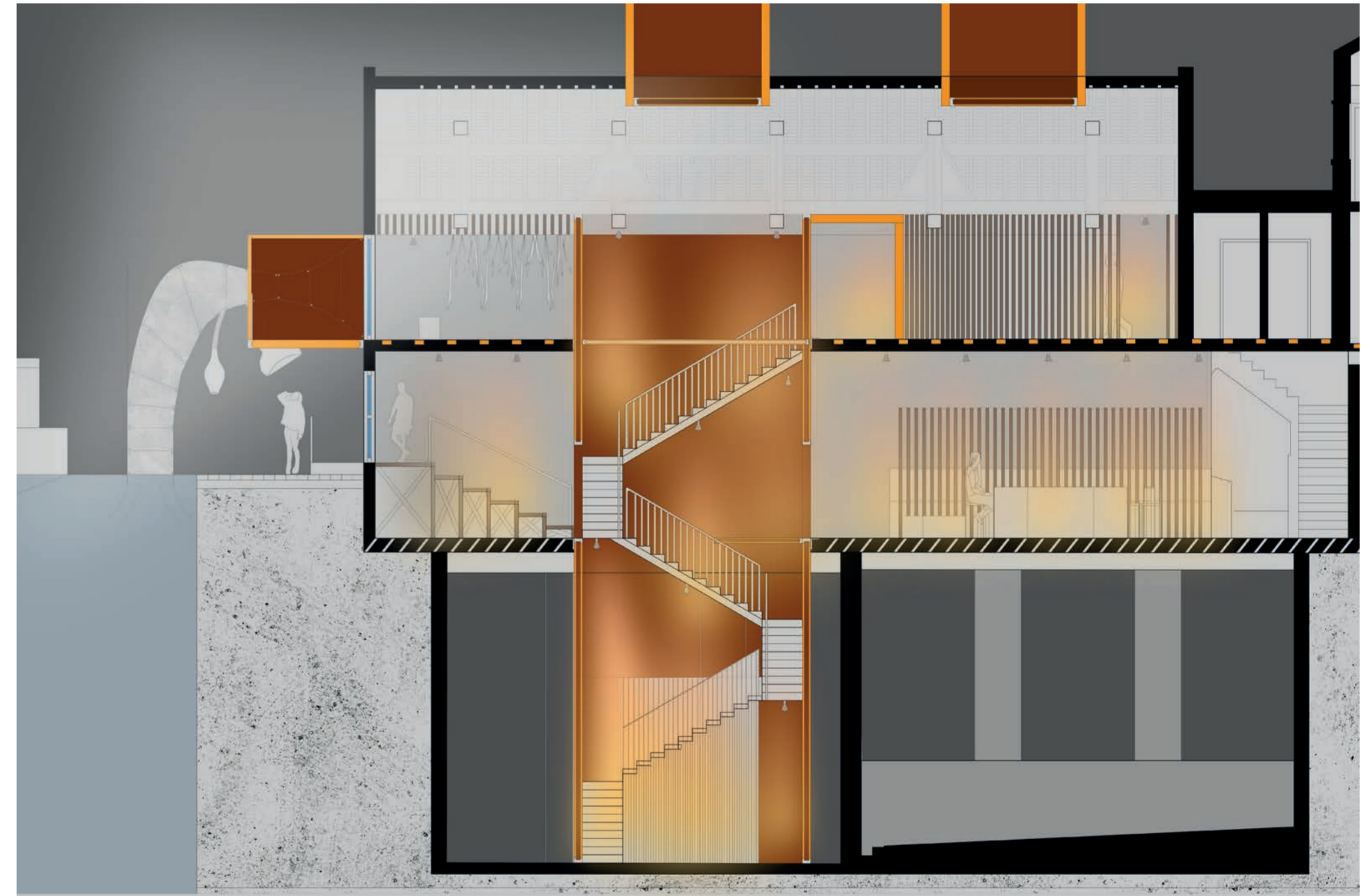
Exploring vertical and horizontal dimensions of shape and space





A SPACE WITHIN A SPACE

The purpose of this project is to help individuals struggling with mental health issues in a more futuristic way rather than an ordinary mental health facility. Around 1 in 6 adults in the UK experiences depression, which is further associated with anxiety, loneliness and stress. My program gives these individuals the opportunity to experience a mind relaxing and healing experience, which will ultimately result in an overall stronger society. Creating a proposal that aims to benefit the healing process of individuals facing mental health problems will lead to a higher performance in society and increased levels in positive emotions and productivity.



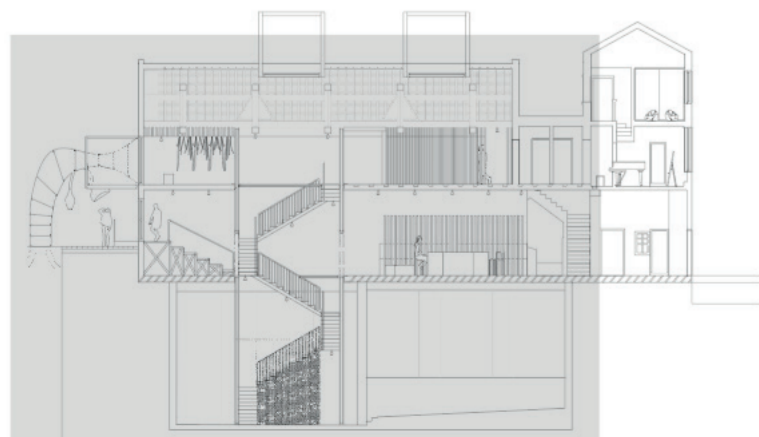
DAY VS. NIGHT

The Day Experience

During the day, natural light will pass through the tube, down into the ice wells, emphasizing light in the centre of the tube. As the users moves towards the inner walls of the wells, the space will become dark and intense and through the use of sound effects create a mind opening experience.

The Night Experience

During the night, the tube structure will be illuminated with artificial light, reflecting rays of orange light to enhance emotions of happiness. The density of the cables, towards the end of the structure will create a powerful pattern and therefore enchanting experience in the ice wells.



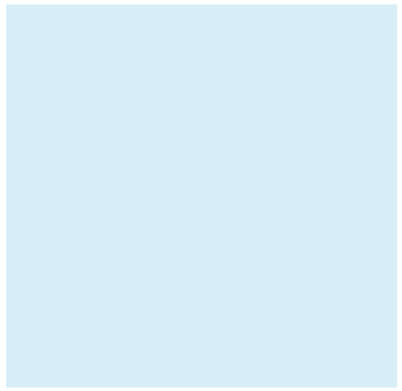
MATERIALITY & SUSTAINABILITY



Double glazed orange tinted silver glass as a sustainable material that maximizes light reflection to enhance natural and artificial experience



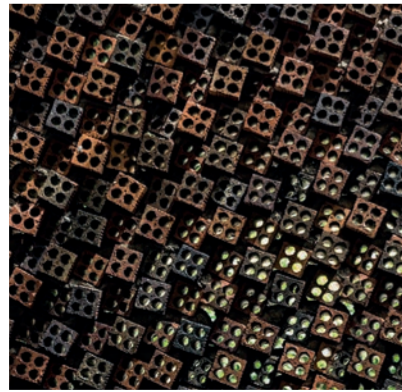
Western red cedar wood: Locally produced wood, sustainable and durable used for seating platform, bar, exhibition stands and plinths to give the space a natural scent and appearance



Double glazed glass: Used for existing windows and skylight flooring and roof



Concrete: Existing demolished material produced during destruction will be used to cast the staircase that runs through the tube structure

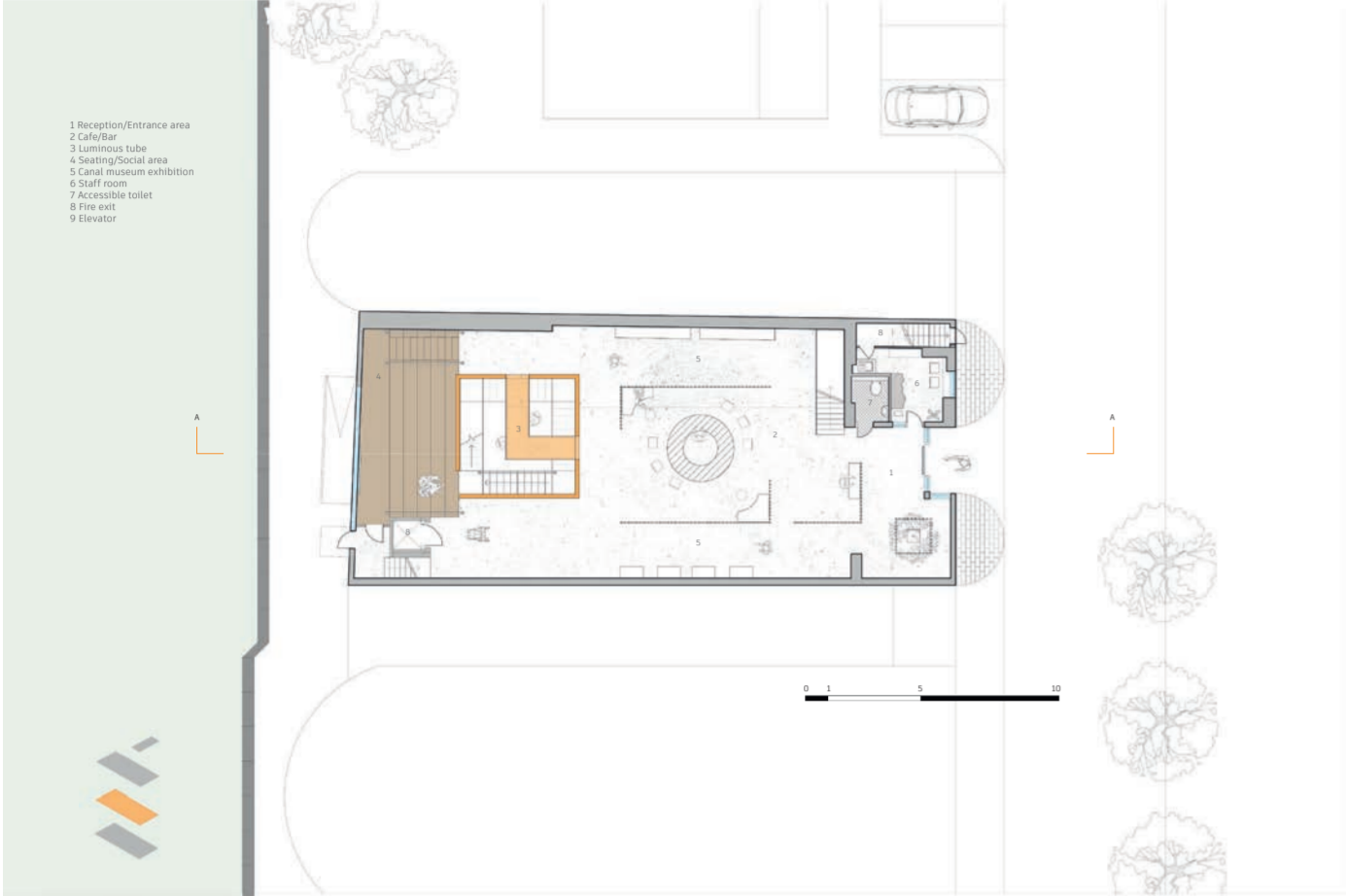


Perforated bricks: Existing brick work used and visually altered to maximize natural light on the second floor and enhance the desired experience



Applying materials to 3 dimensional space

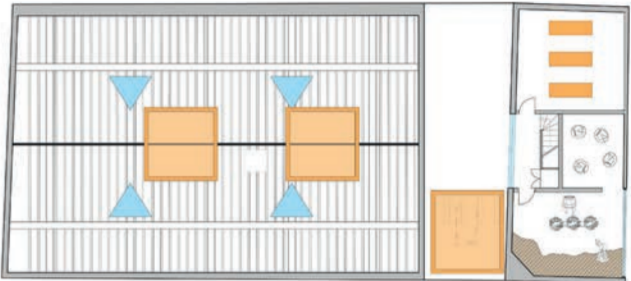
THE FINAL EXPERIENCE



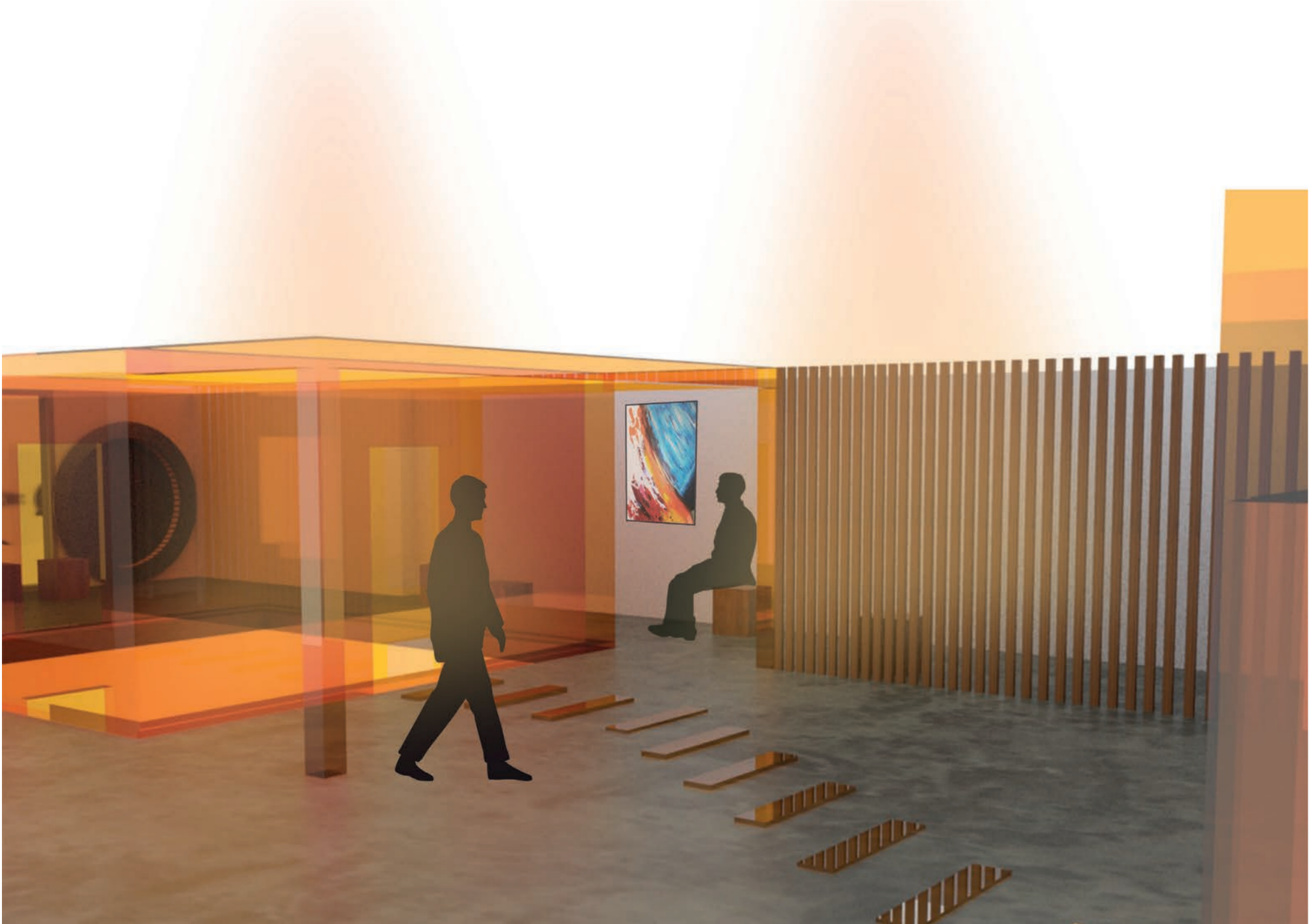
Ground Floor



First Floor



Second Floor



First floor art gallery and sound chamber



Ground floor: The first impression