

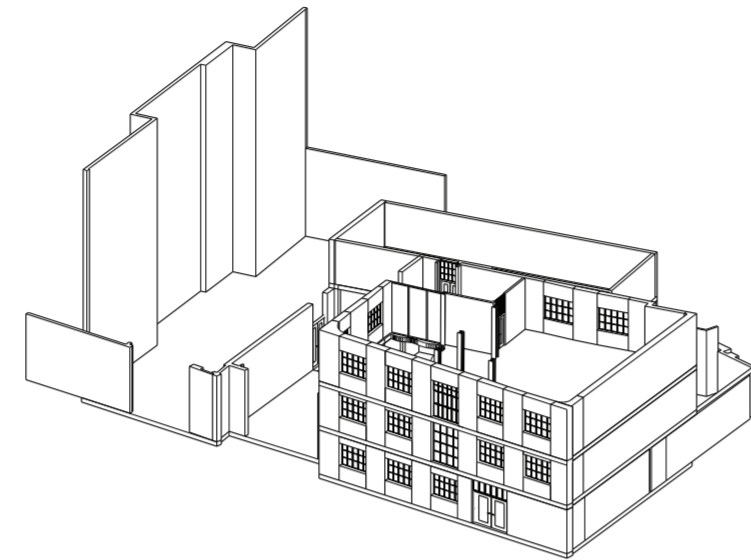
# THE INSTITUTE OF INNOVATION

The Institute of Innovation is dedicated to exploring research and development in the field of sustainable fashion and textiles by recycling and reusing textile waste and manufacturing new sustainable and long-lasting textiles.

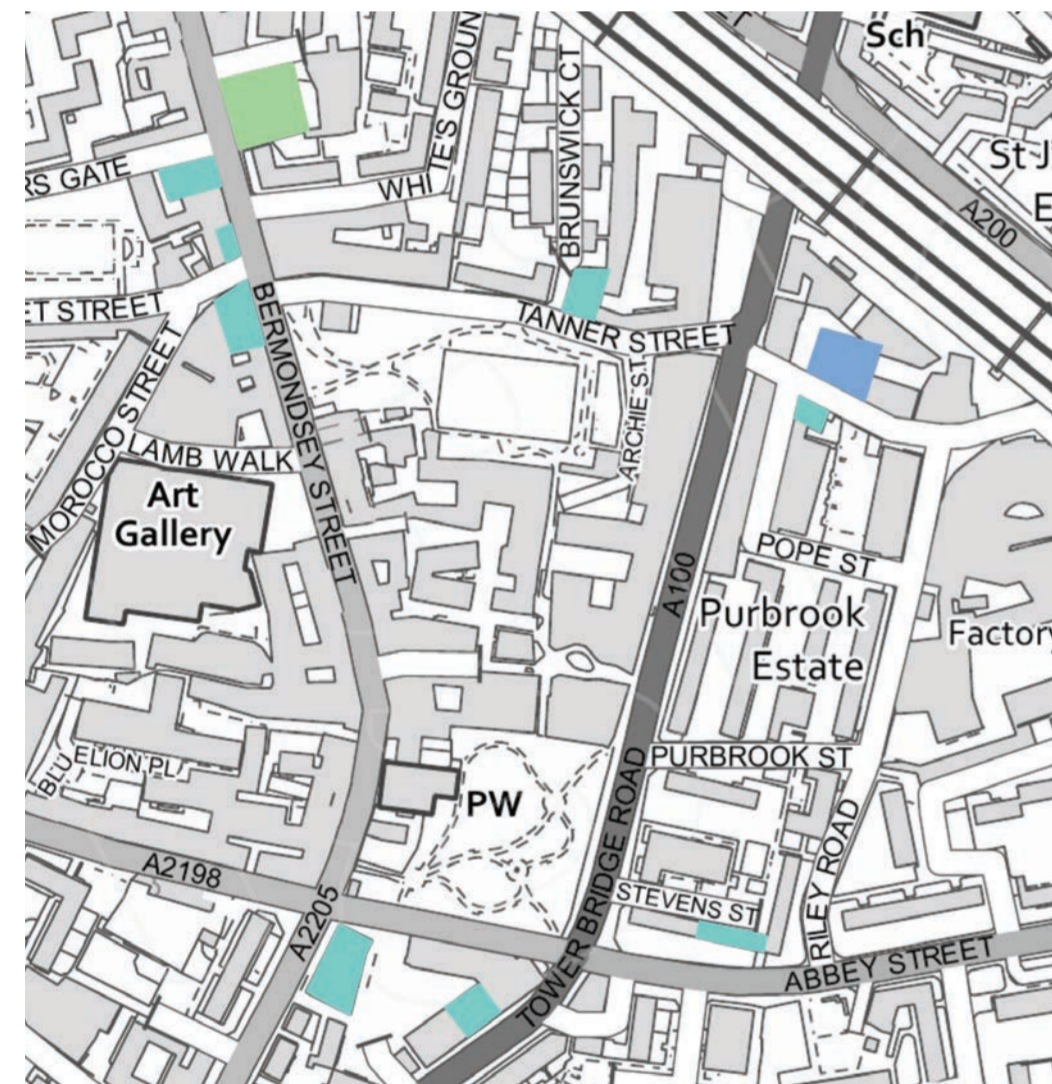
This can be achieved through interdisciplinary collaboration of users and staff of the programme using the latest technology innovations. The Sustainable Fashion Hub is a visionary project that aims to transform the way people engage with fashion and textiles. Positioned as a dynamic, interactive space, it functions as a playful exhibition of recycled and environmentally friendly fabric, fostering curiosity and a desire to learn more about responsible and sustainable style. The hub serves as a center for experiential learning and innovation, promoting eco-friendly consumerism and a circular economic system through combating fast fashion. With a focus on recycled and natural textiles, repurposing, and raising awareness, the hub creates a unique experience that encourages individuals to make informed choices for a more sustainable and harmonious future.

## SITE

The site is located in Bermondsey, the South East of London, near River Thames and London Bridge. Bermondsey evolved into an industrial centre in the 18th and 19th century and holds significance tied to tanneries and therefore fashion. Historically, the area was renowned for its thriving tannery industry, contributing to its economic and cultural identity. Tanneries played a huge role in leather production processes connecting Bermondsey to the broader fashion industry. The site bears traces of its heritage.



PERSPECTIVE VIEW OF DIGITAL SITE MODEL

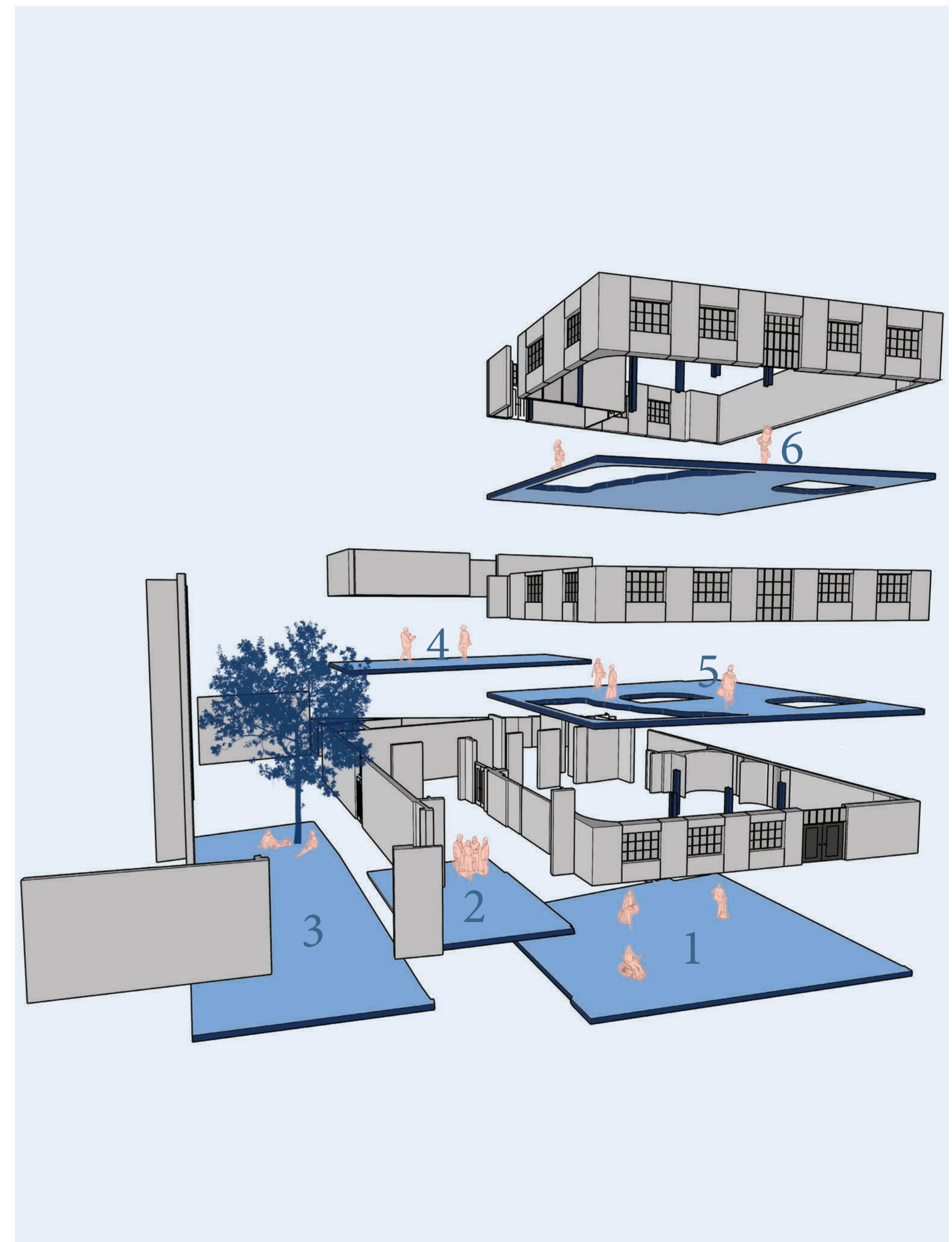


- SITE BUILDING
- FASHION-RELATED RETAIL
- FASHION AND TEXTILE MUSEUM

Looking at the area around the site, a rarity/ no availability of Sustainable and fashion-related spaces was noticed. There are sites relating to textiles though existing museums or retail stores related to fashion do not focus or incorporate Sustainability into their practices. The lack of such an important factor in the industry makes it difficult for residents around Bermondsey to improve their choices related to Fashion.



ATMOSPHERIC VISUALIZATION

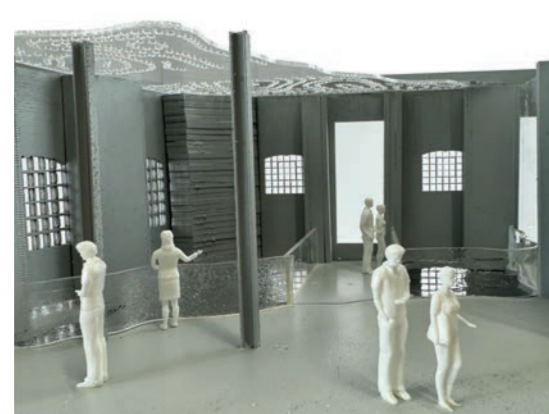


EXPLODED AXONOMETRIC VIEW - DIGITAL MODEL

- |   |  |
|---|--|
| <p><b>1</b> Entrance/ Reception Exhibition space</p> <p><b>2</b> Drop-off Recycle Area</p> <p><b>3</b> Outdoor Area</p> | <p><b>4</b> Educational space</p> <p><b>5</b> Recycle Area</p> <p><b>6</b> Workshop Area</p> |
|---|--|



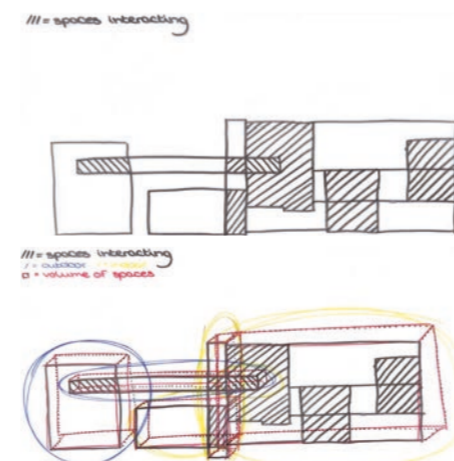
SECTIONAL MODEL AXO VIEW



SECTIONAL MODEL 2F VIEW



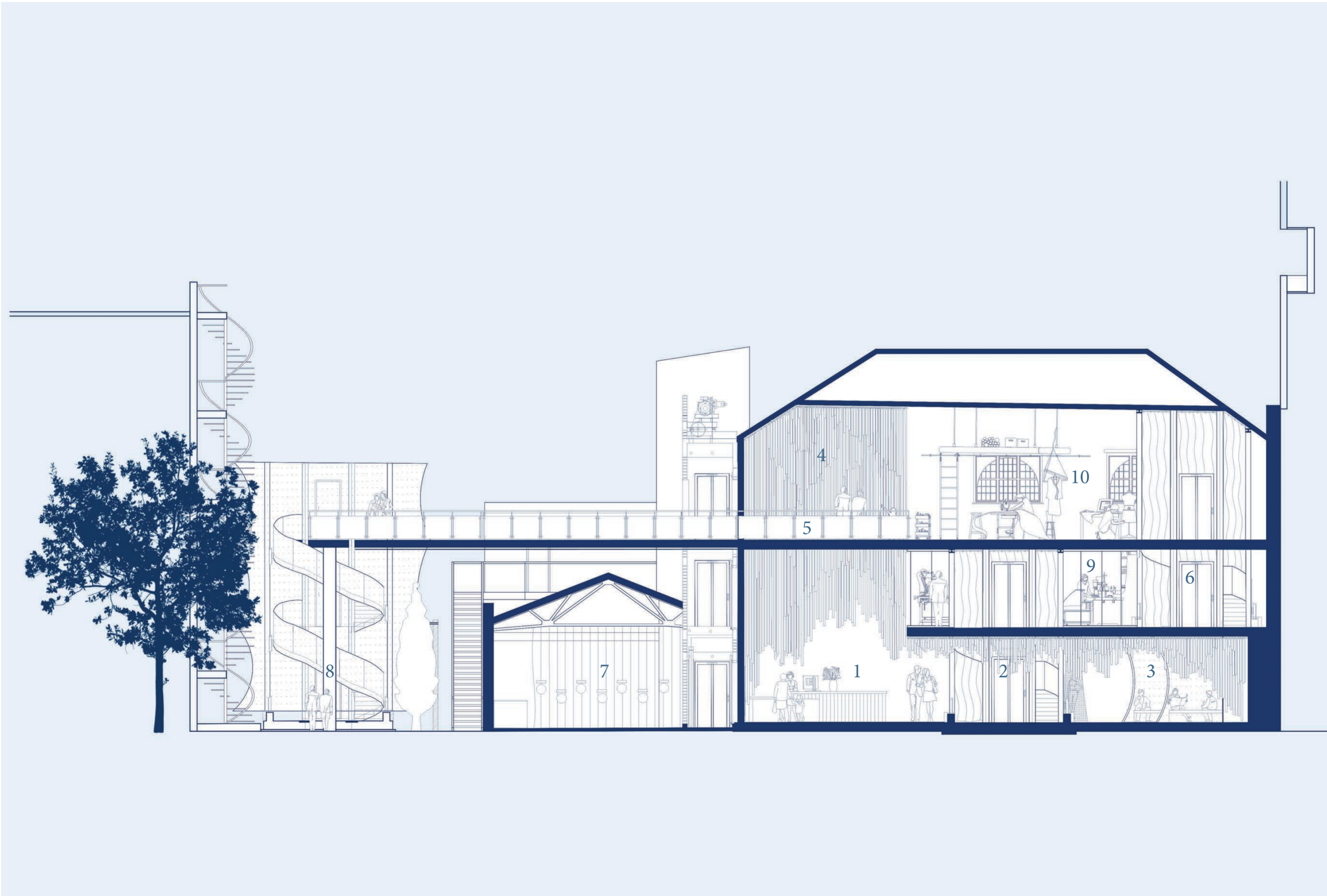
SECTIONAL MODEL TOP VIEW



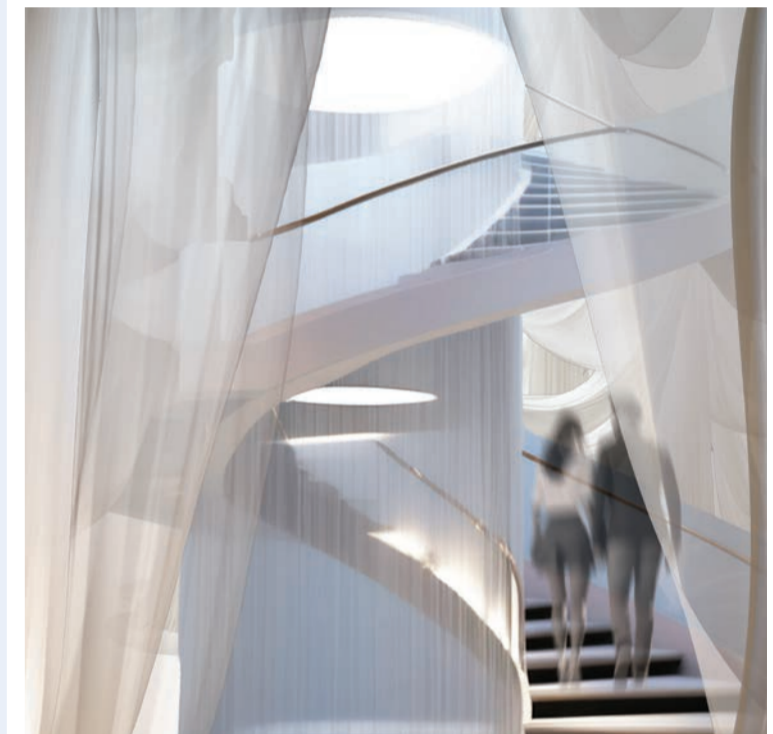


Implementing sustainable fashion and textile recycling is crucial worldwide - So is it in London.

This project focuses on a site located in Bermondsey, known for its historical ties to industries like leather making. Shifting from historical processes of clothing production to innovative and eco-friendly solutions is essential to address environmental concerns and reshape Bermondsey's image. Currently, there's a lack of sustainable fashion infrastructure in Bermondsey, highlighting the urgent need for change. By embracing sustainability, Bermondsey can lead in eco-conscious operations, revitalizing its identity while contributing to global environmental efforts.



WAITING AREA/ LOUNGE



STAIRCASE WITH TEXTILE 'WRAPPING'



BRIDGE TO COURTYARD

SECTION  
AA  
SCALE 1:100

1 Reception/  
Assistance

3 Waiting Area/  
Lounge

5 Bridge to  
Courtyard

7 Drop-Off  
Recycle Area

9 Recycling  
Area

2 Elevator  
Gf to 1F

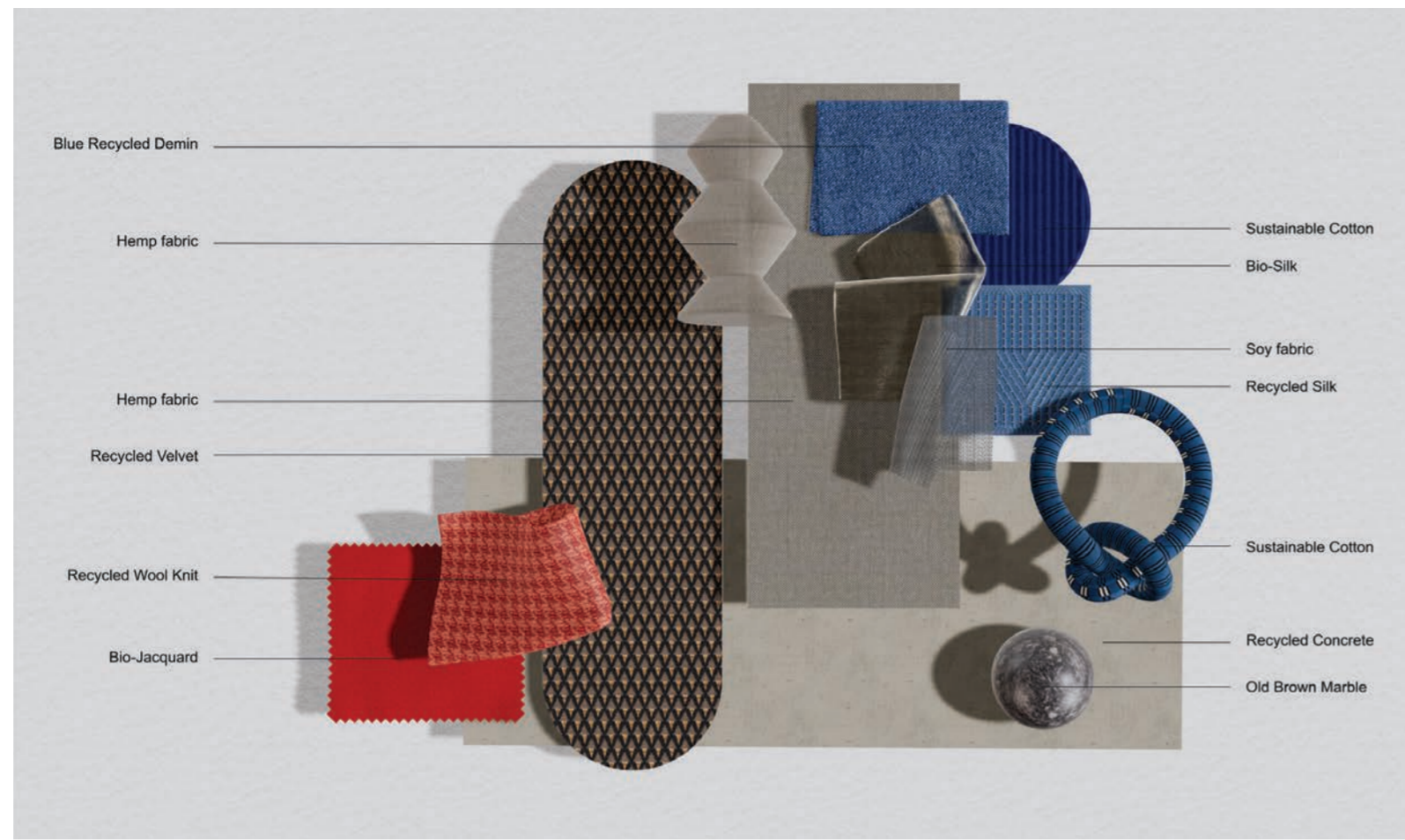
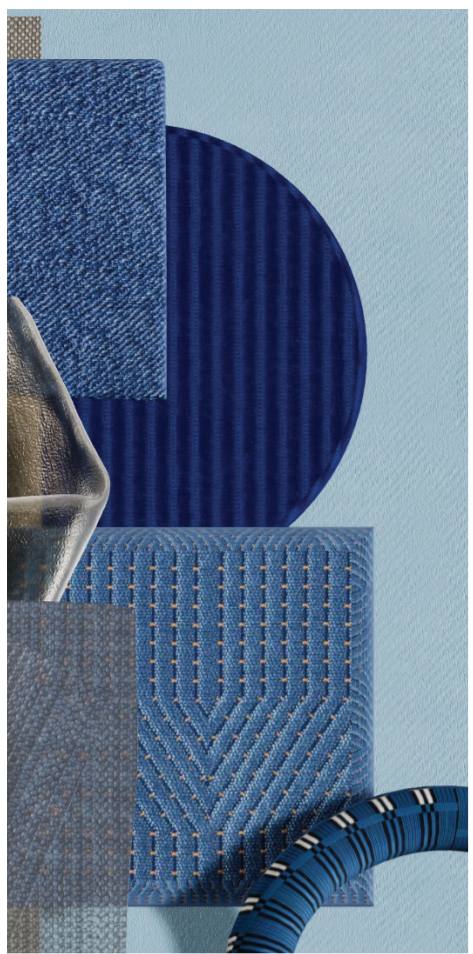
4 Textile  
Exhibition

6 Elevator  
1F to 2F

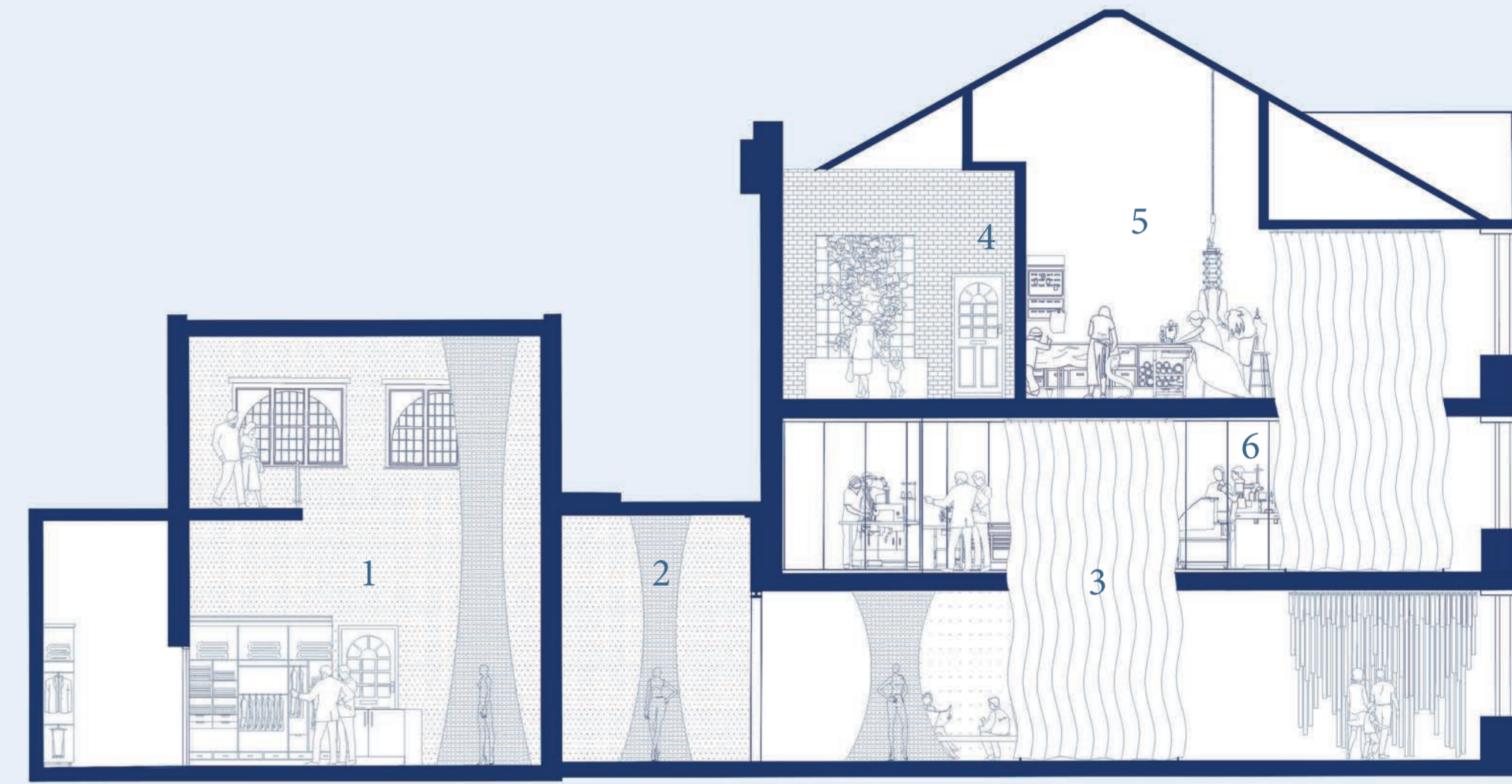
8 Outdoor Area/  
Courtyard

10 Workshop  
Space

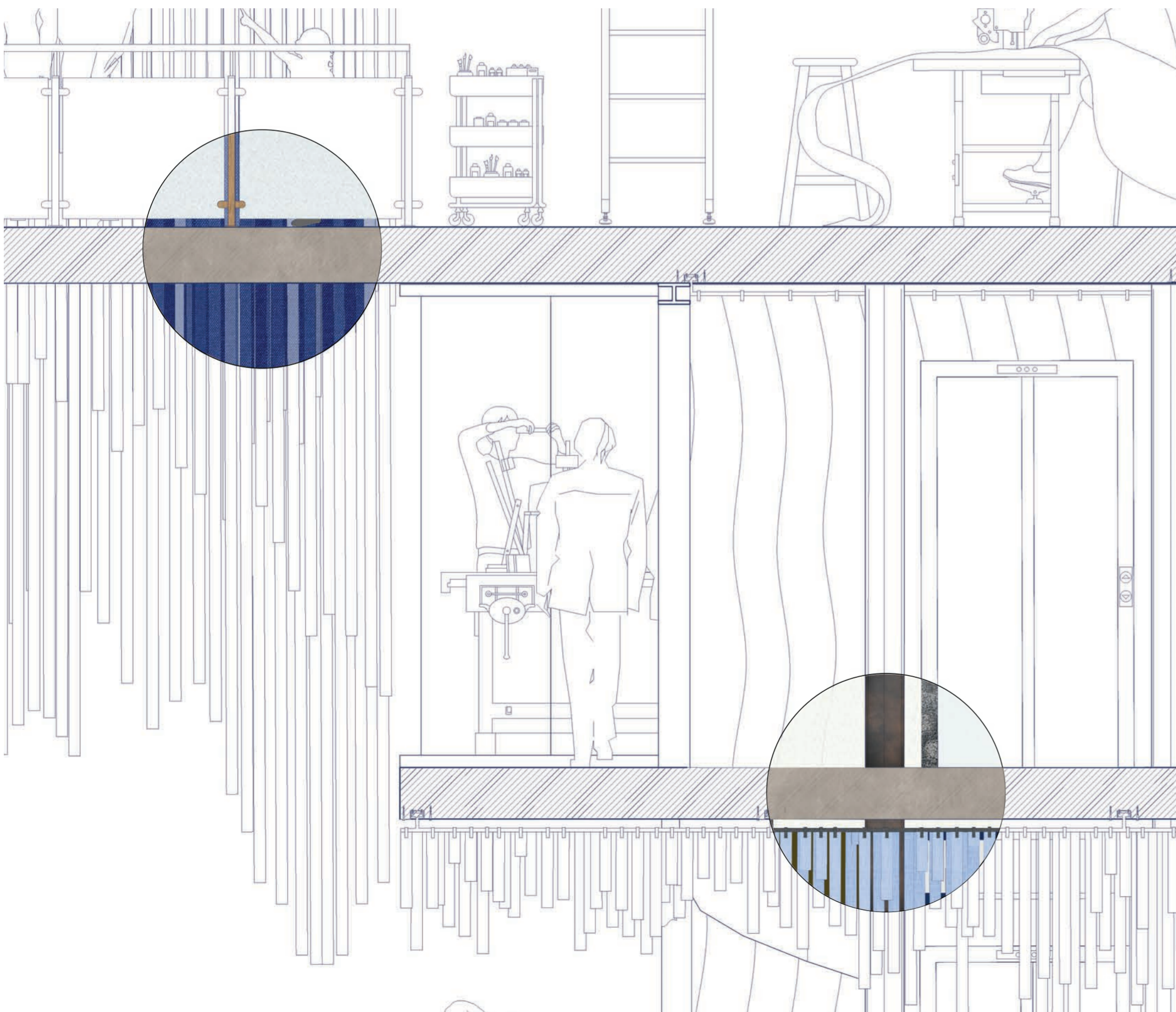




SECTION  
BB  
SCALE 1:100



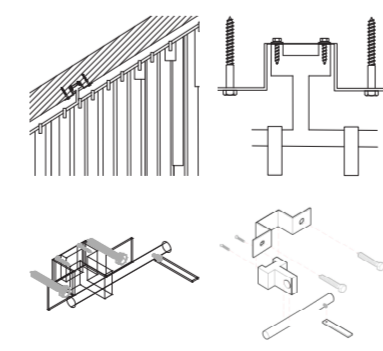
- 1 Retail Area
- 2 Textile Exhibition
- 3 Curtain Elevator Gf to 2F
- 4 Indoor/ Outdoor Terrace
- 5 Workshop Space
- 6 Recycling Area



WORKSHOP DETAILED SECTION SHOWING PART OF MATERIALITY



VOID GF TO 2F



CURTAIN ROD

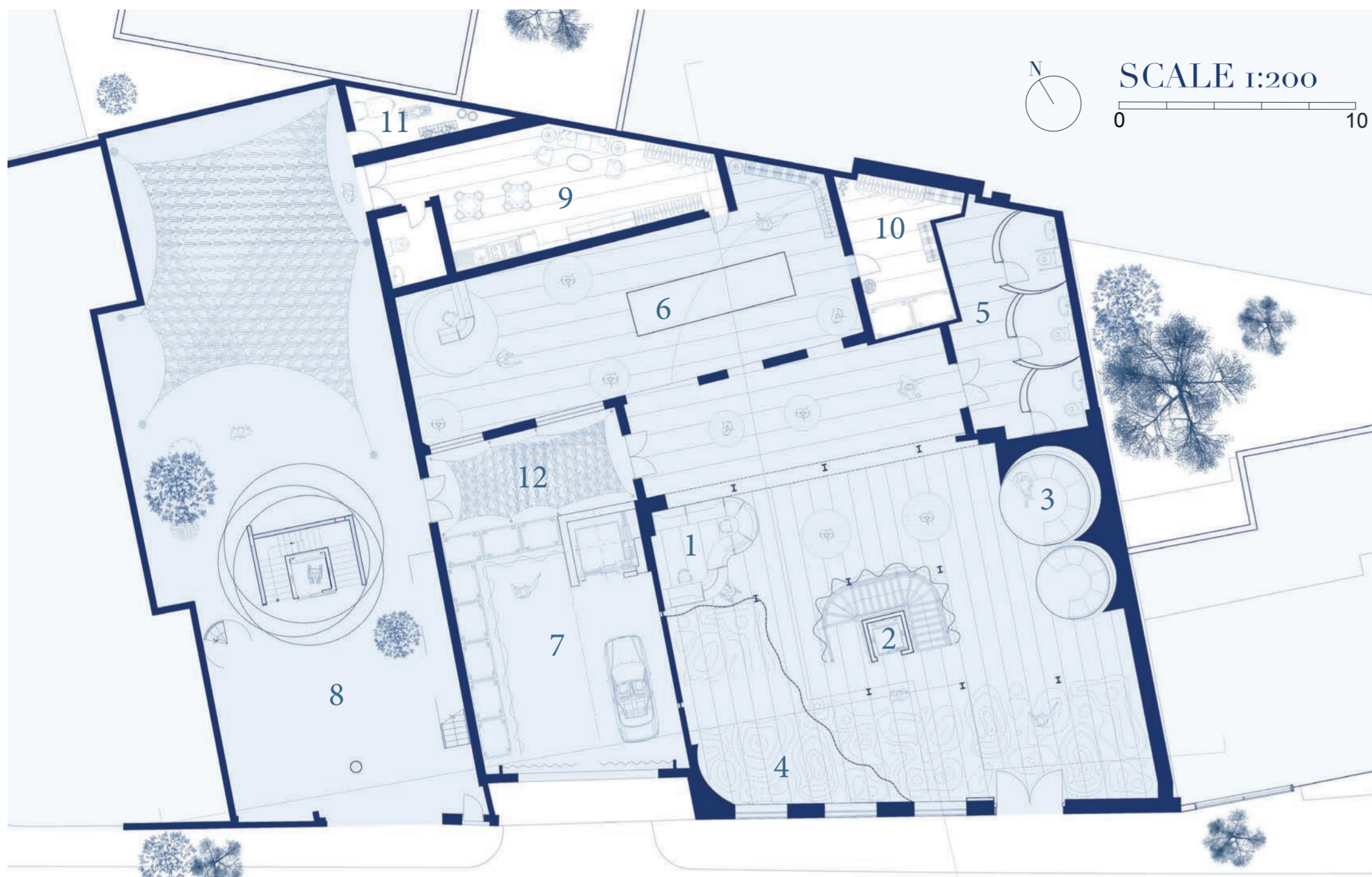


TEXTILE EXHIBITION



WORKSHOP SPACE ON 2F





**GROUND FLOOR PLAN**

- |                                  |                               |                                |
|----------------------------------|-------------------------------|--------------------------------|
| <b>1</b> Reception/ Assistance   | <b>3</b> Waiting Area/ Lounge | <b>5</b> WC Guests and Staff   |
| <b>2</b> Elevator Gf to 1F       | <b>4</b> Textile Exhibition   | <b>6</b> Retail Area           |
| <b>7</b> Drop-Off Recycle Area   | <b>9</b> Staff Area           | <b>11</b> Courtyard Storage    |
| <b>8</b> Outdoor Area/ Courtyard | <b>10</b> Retail Storage      | <b>12</b> Outdoor/ Indoor Area |



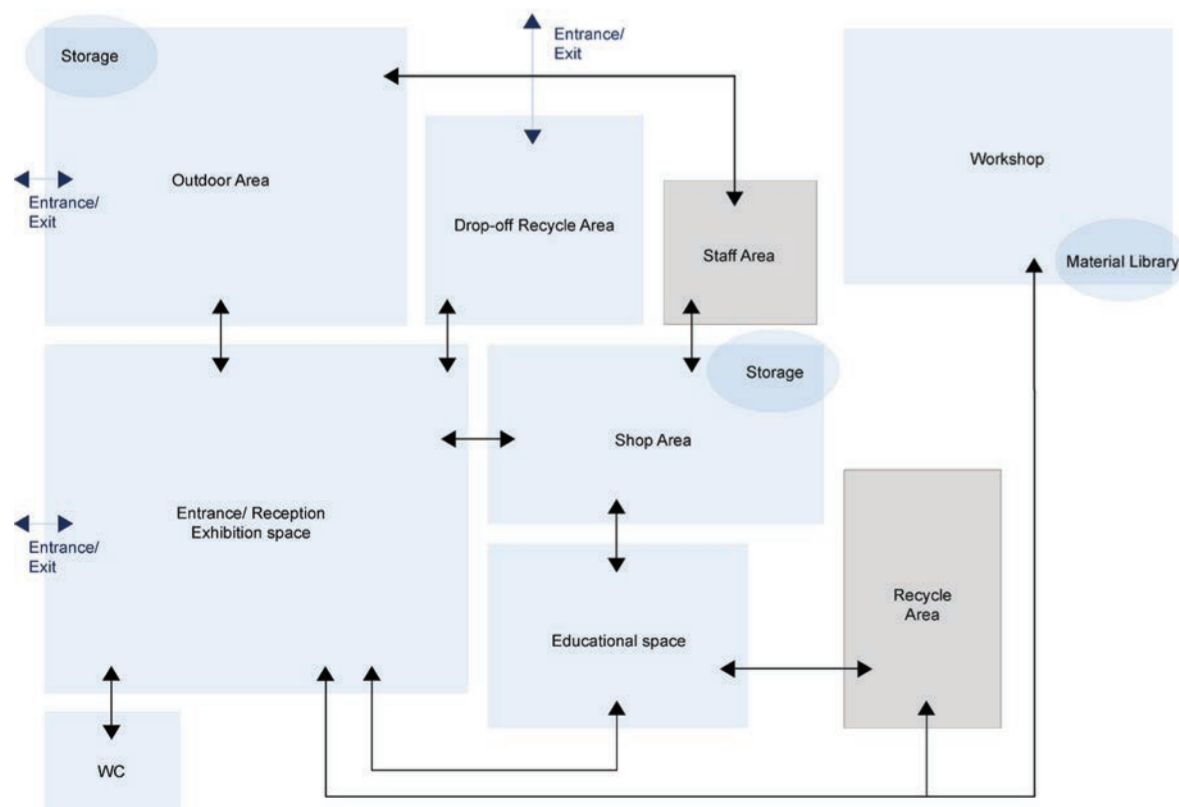
RETAIL AREA



VIEW FROM RECEPTION TO RETAIL AREA



EDUCATIONAL SPACE



SPACES ACCESSIBLE FOR USERS AND STAFF  
 STAFF ONLY SPACES

**SPATIAL PLANNING**



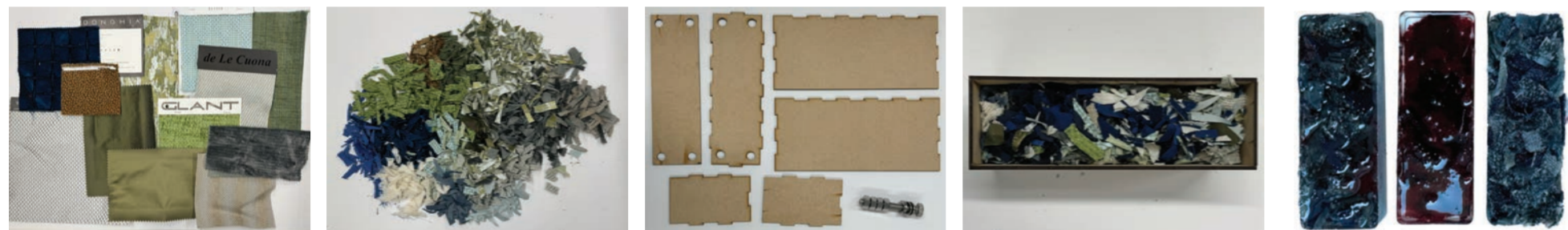
HALLWAY



BETWEEN RECEPTION AND RETAIL AREA

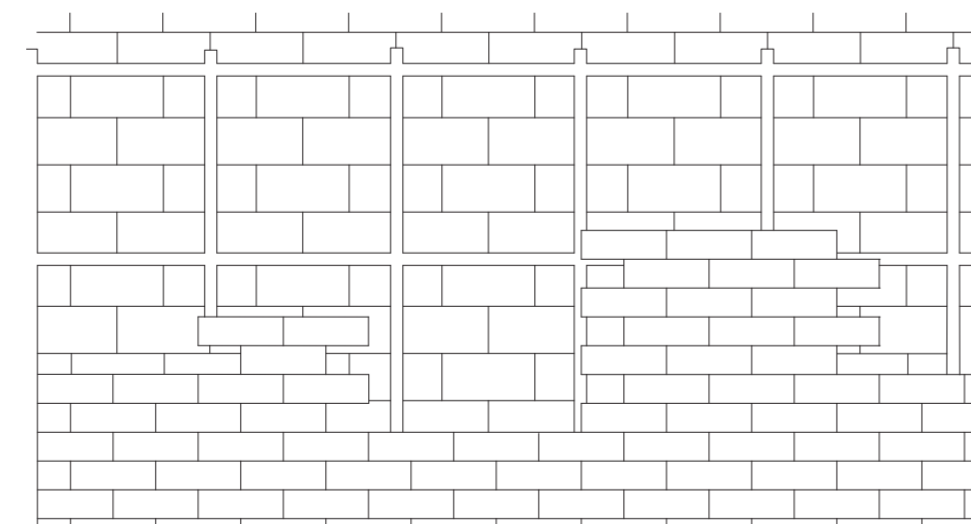
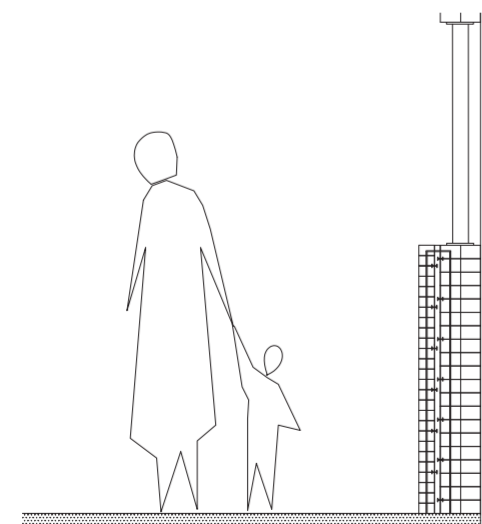
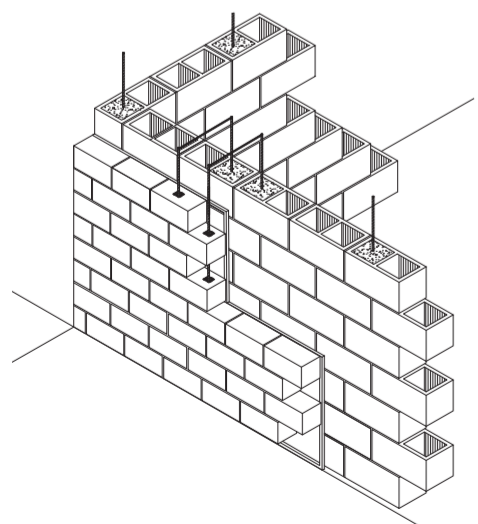


## Circular Economy diagram - Sustainable Fashion Hub



RENDER OF WORKSHOP - FABRIC BRICKS ON FRAME

RENDER OF WORKSHOP - FABRIC BRICKS ON FRAME

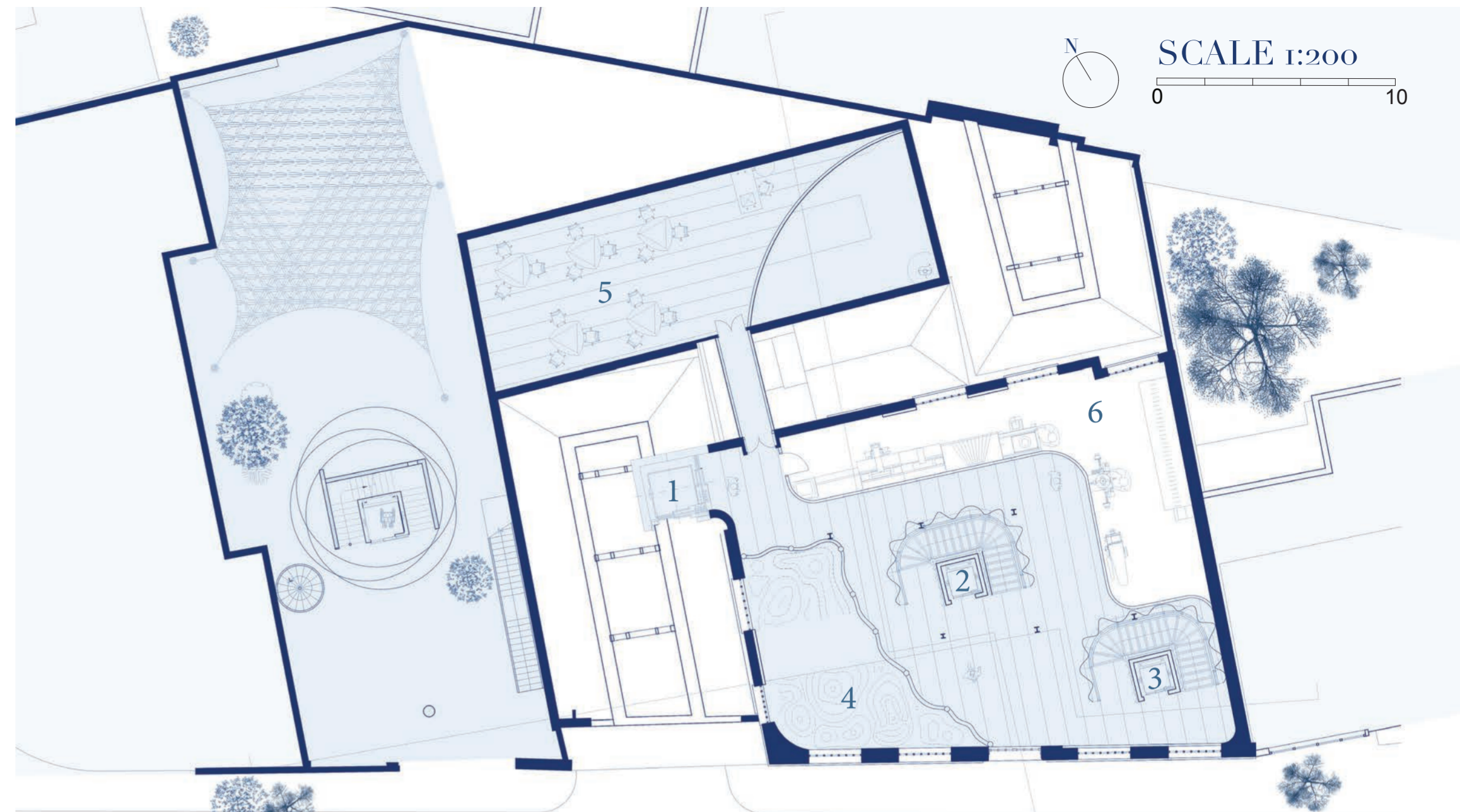


AXONOMETRIC VIEW OF FABRIC BRICKS ON FRAME

SECTION VIEW

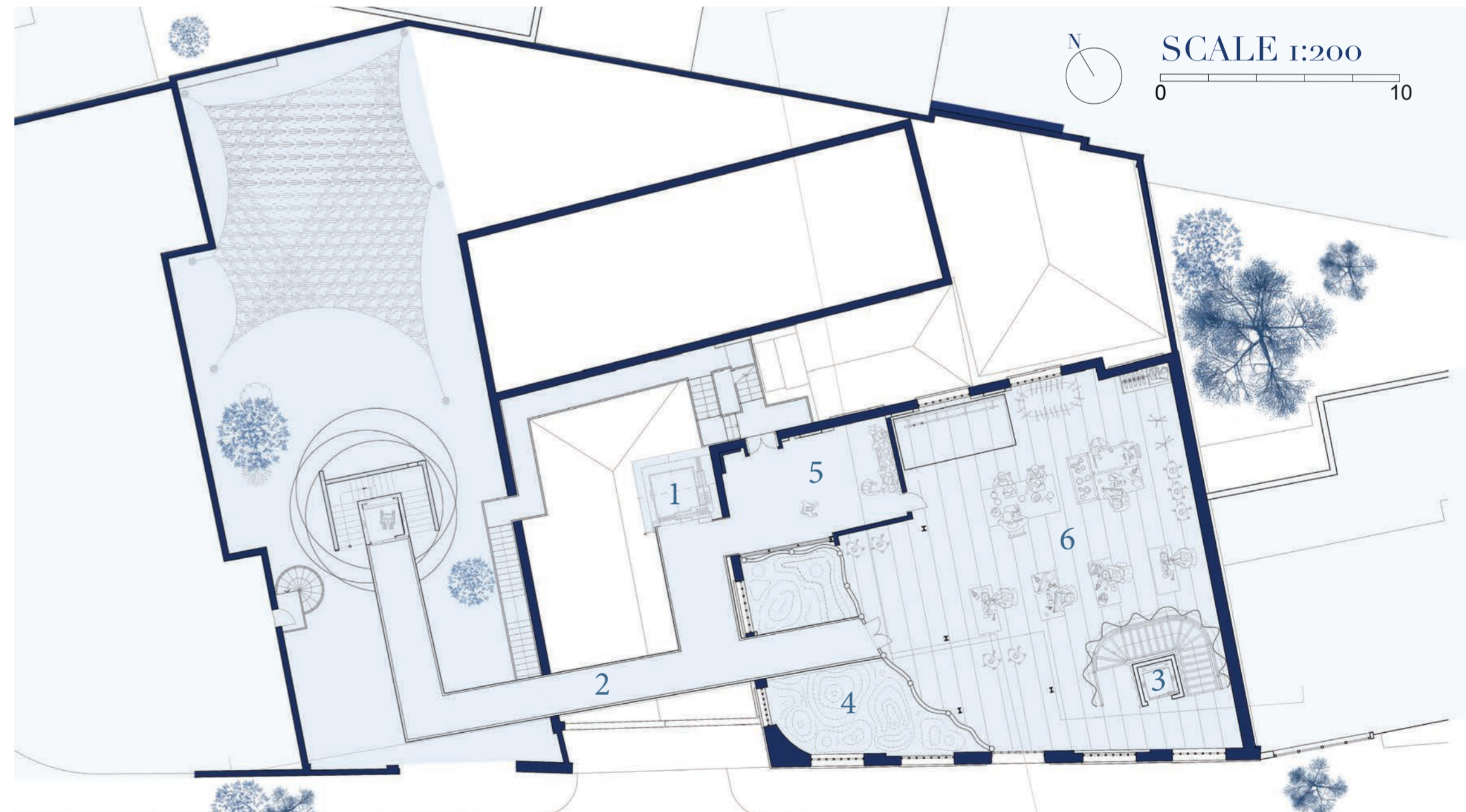
ELEVATION VIEW

I conducted a personal experiment focused on recycling old garments and exploring innovative ways to reuse fabric scraps. The core of my investigation was creating fabric bricks from these scraps, which I tested for their potential in noise reduction within my workshop area. Through this experiment, I aimed to discover practical and sustainable methods for repurposing textile waste while enhancing the acoustic environment of my workspace.



### FIRST FLOOR PLAN

- 1 Goods Lift
- 2 Elevator Gf to 1F
- 3 Elevator 1F to 2F
- 4 Textile Exhibition
- 5 Educational Space
- 6 Recycling Area



### SECOND FLOOR PLAN

- 1 Goods Lift
- 2 Bridge to Courtyard
- 3 Elevator 1F to 2F
- 4 Textile Exhibition
- 5 Indoor/ Outdoor Terrace
- 6 Workshop Space