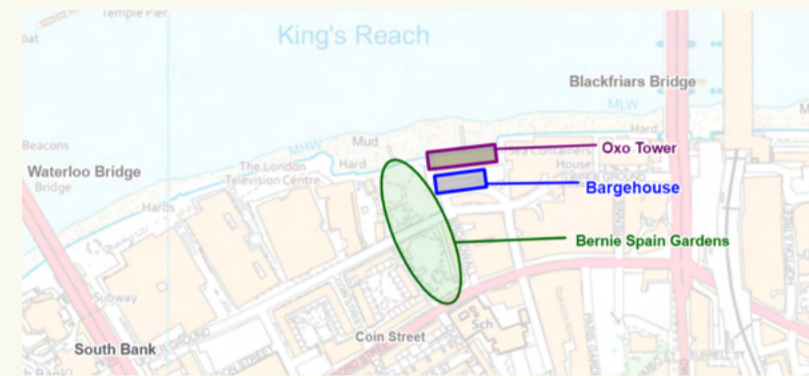


Designing for People

Breif

To develop a design proposal for a Welcome space at the Bargehouse, that will enhance the Coin St organization's ethos and provide a community experience. The design scheme for this welcome area is to include a Café, a shop, and an additional program you will propose. You are required to design the user's experience by developing a design proposal within the specified area of the site Bargehouse, based on your project/design concept. You will begin by generating design ideas on how to improve the functionality of the spaces, especially with the flexible space /multi-purpose challenge and the need to consider proactive accessibility.

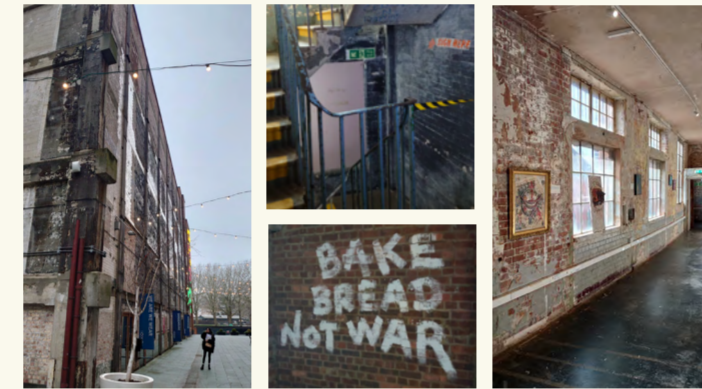


Site

Located in South Bank is an untouched five-storey building, in its raw state, Bargehouse is blank canvas with tremendous scope often transformed by creatives for unconventional exhibitions, immersive performance and interactive events.

In the late 1920s it was purchased by the Liebig Extract of Meat Company, which demolished much of the building but extended its riverside frontage.

In the early 1970s, when Coin Street purchased the building, it was derelict.



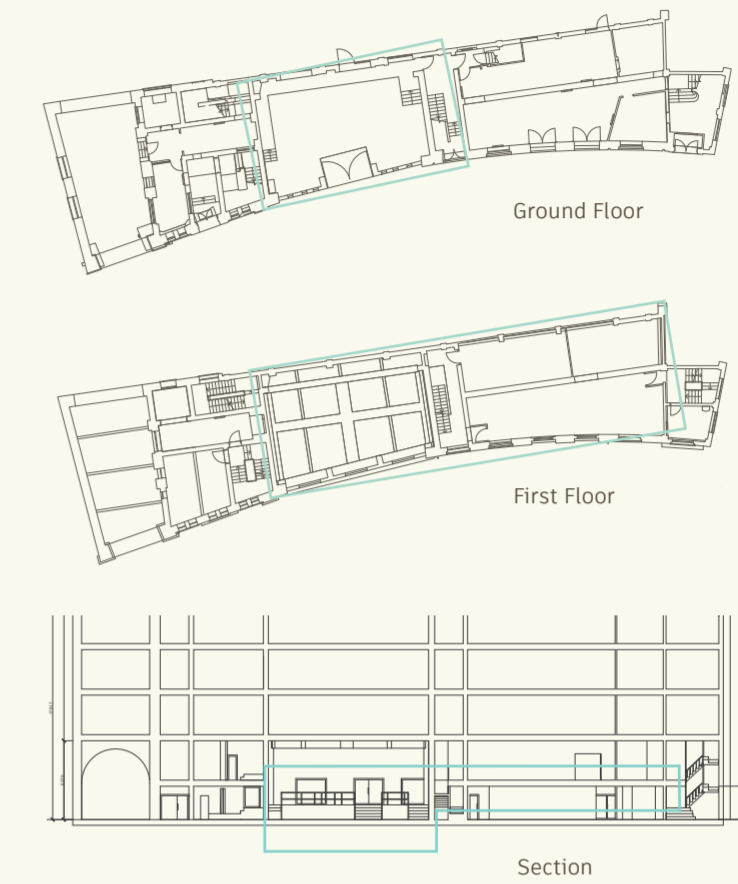
South bank, Largely developed in the 1960s with a focus on architecture's newest trend, brutalism.



Bernie Spain Gardens, A vital oasis, a place where nature meets the city with opportunities for communal gardening.



Original Floorplans



Client

Coin Street is a social enterprise with co-operative homes, parks and gardens, shops and design studios, galleries, restaurants, a family and children's center, sports pitches, and a range of activities for the local community. Making their neighborhood a great place to live, work in, and visit.

Key elements that epitomizes Coin Street



- Democratic
- Supporting
- Growth
- Lively



Concept

A Garden Escape

From the raw and gritty industrial area, a new beginning has emerged with Bernie Spain Gardens as its heart.

To prolong the garden seasons to an all-year-round event the park will be extended into the spaces of Barge house. It will bring the community a garden escape no matter the weather or season.

The greenery and freshness of the indoor green house would be a place for growth and recuperation all year round.

Function

The activities that will take place in the space is an indoor Green House, a shop with artisan gardening tools, and café.

The Greenhouse will hold workshops on gardening, have pottery benches, and plant storage for its local residents where they can keep seedlings or other projects, this as an extension of their own home.

The shop complements the greenhouse as well as the design studios in neighboring Oxo Tower.

The space is not only for gardening enthusiast, but everyone is also welcome to have a cup of coffee and be inspired or just enjoy the freshness of the greenery.



Barbican Conservatory



Anderssen & Voll



Hotell Castello, Italy by Benedikt Bolza



Systrarna Voltaire, Sthlm



Planning



Design

Precedents from architecture that resembles the key words growth and support.



Zaha Hadid Architects



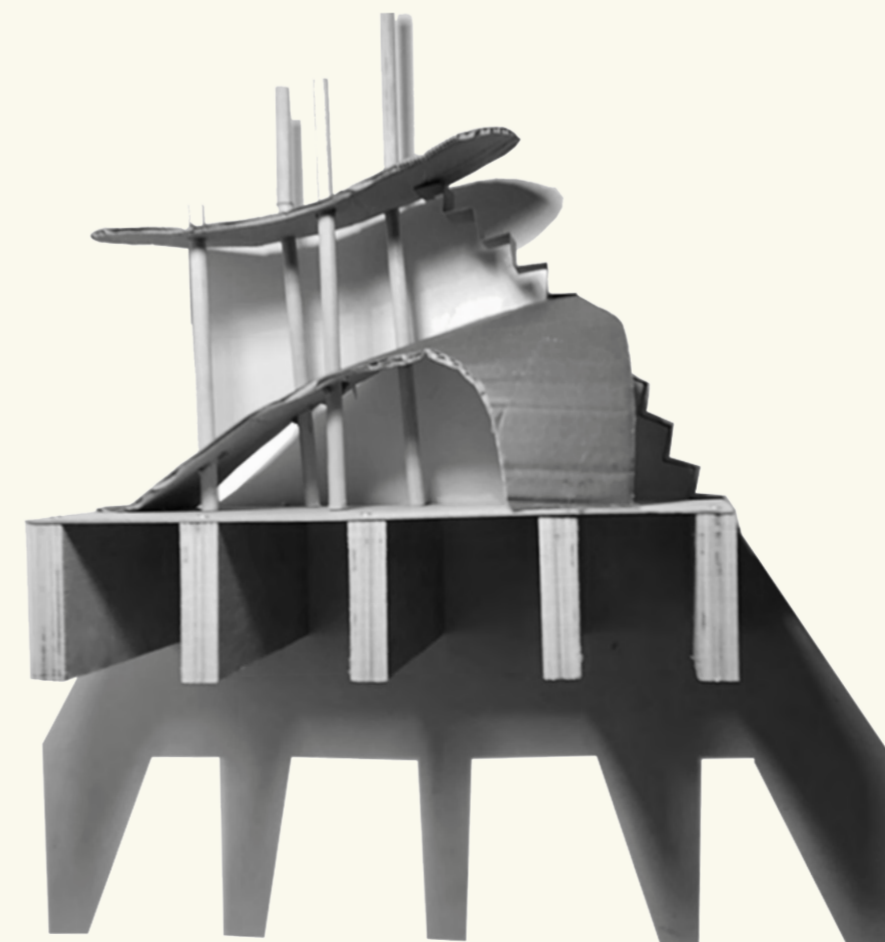
University of Stuttgart



Project Orange



Shan-Shui by Neri&Hu



A solid foundation that levels up with potential for growth, the support from the structure gives room for fluidity and movement.

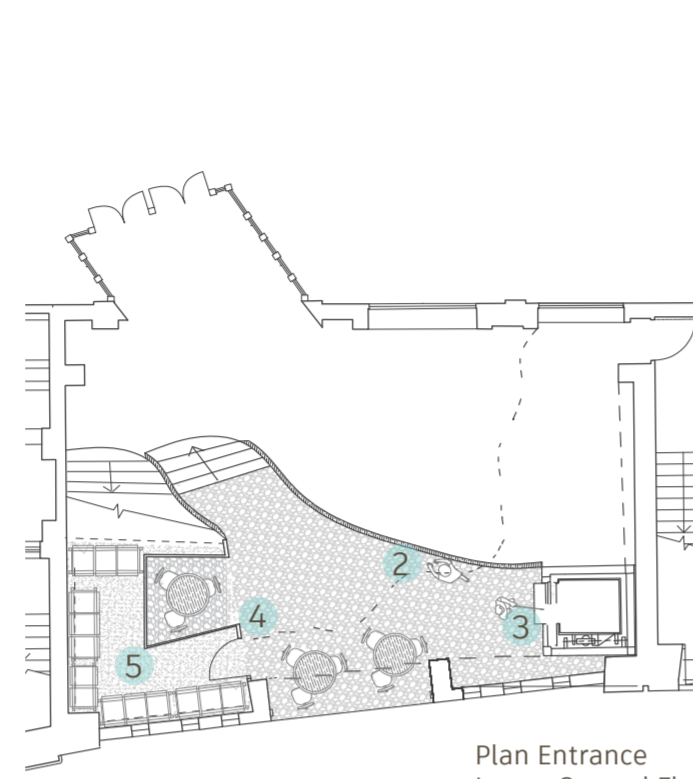


- 1 Entrance
- 2 Shop
- 3 Elevator
- 4 Café
- 5 Storage/staff room
- 6 Reception/ Cashier
- 7 Lobby
- 8 Workshop
- 9 Pottery Benches

The layout of the space will have a fluidity where the different functions grow into one and other.

As the visitor moves around the space there will be a flow to the circulation that allows them to take several routes to end up in the same space. There are no boundaries in this space.

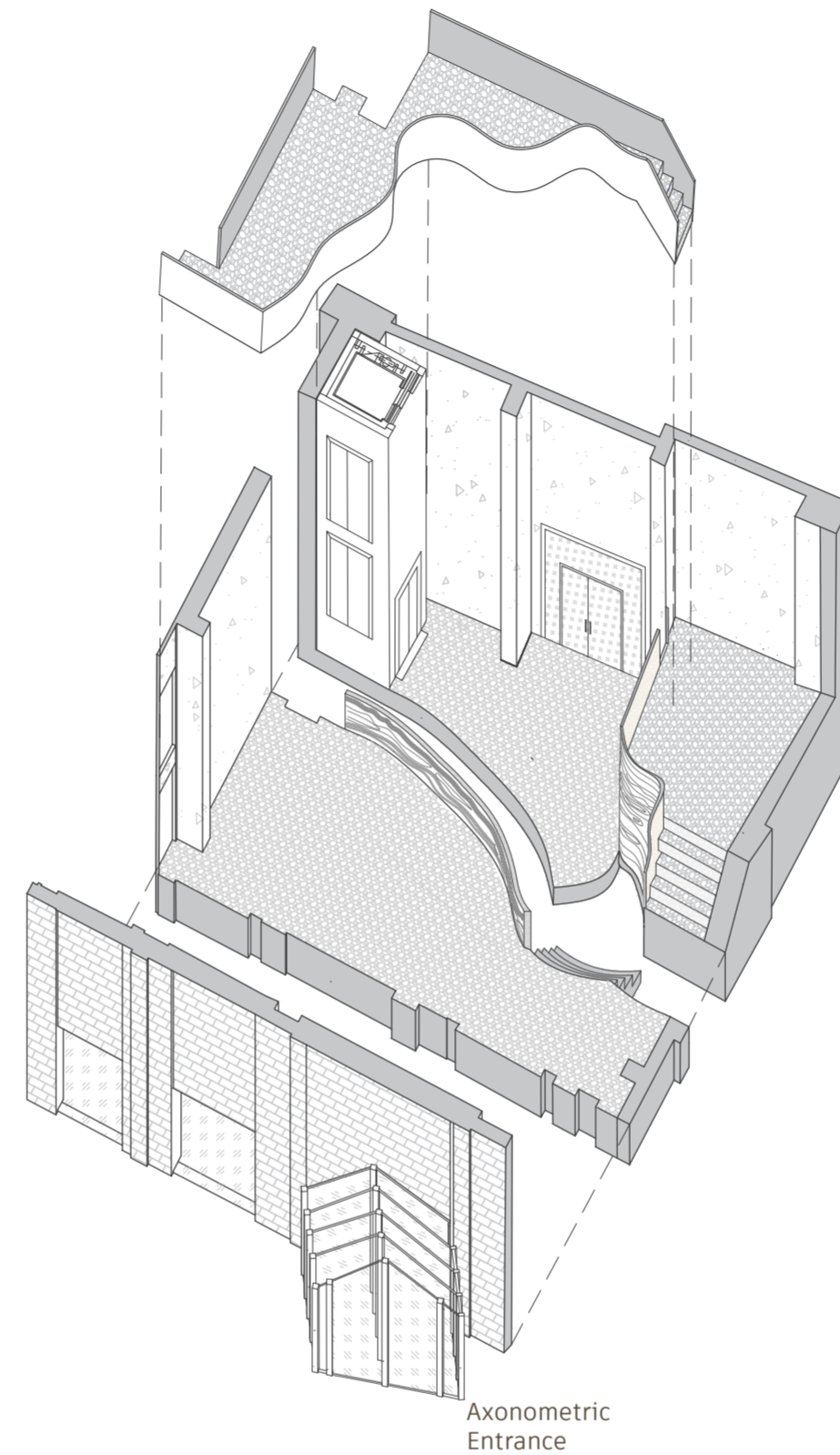
The visitor can shop, have a cup of coffee, tend to their gardening, or just look for inspiration in all the spaces. This is to create a democratic space where people can come together and grow as a community.



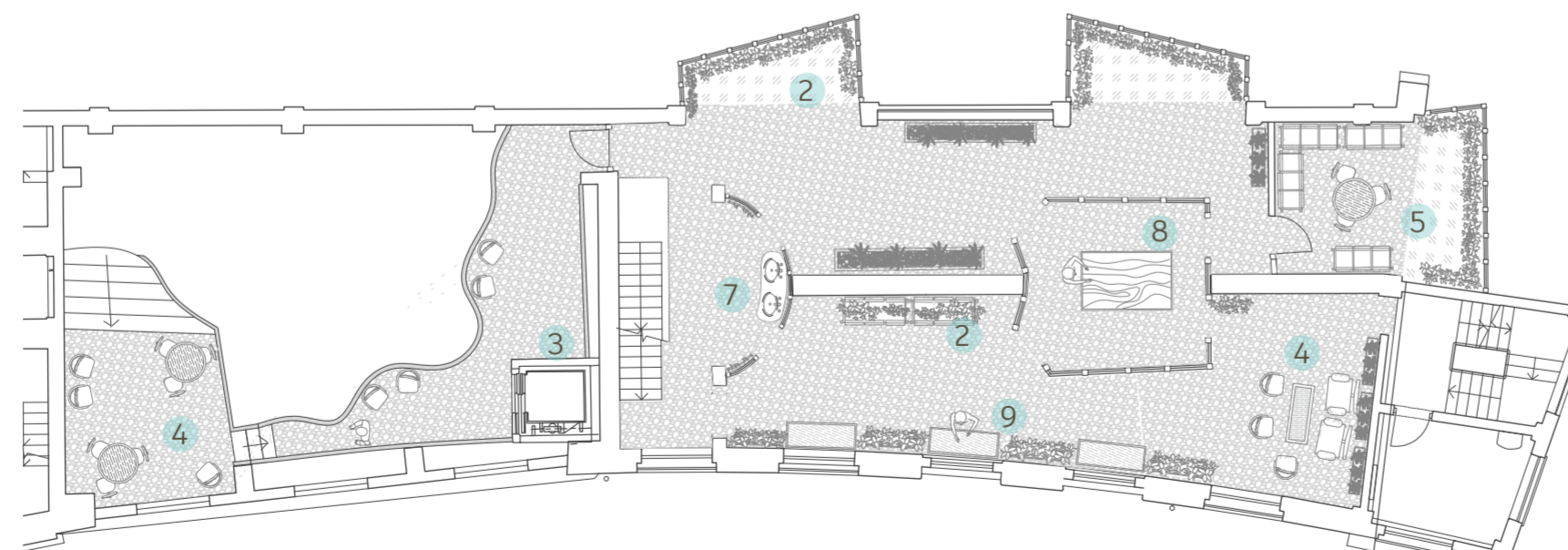
Plan Entrance Lower Ground Floor



Plan Entrance Ground Floor



Axonometric Entrance



Plan Entrance First Floor

Plan Green House First Floor

When looking at details, I want to join materials relating to the project; concrete, walnut and copper. It's important that the junctions have an even flow between them making them appear to grow into each other and by doing so creating a flow that represent this project.

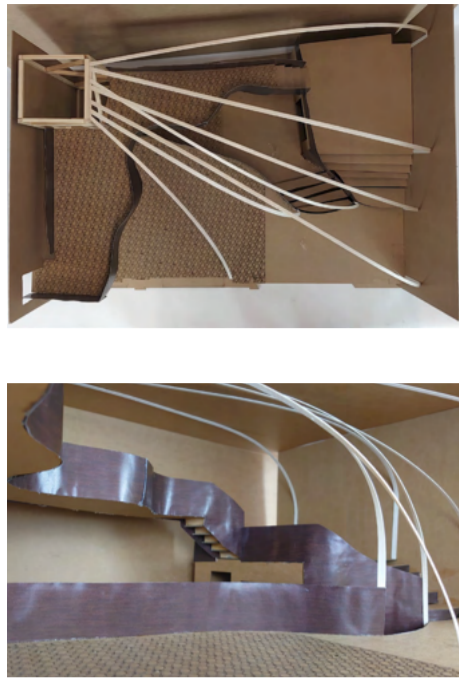


The sculpture is exploring opposing characteristics, its heavy and light, rough and smooth at the same time. The heavy concrete appears to be lifted by the delicate wood or is it holding it down? Thin metal junctions hold it all together creating a balance where the different materials create a circle, a circle of life.

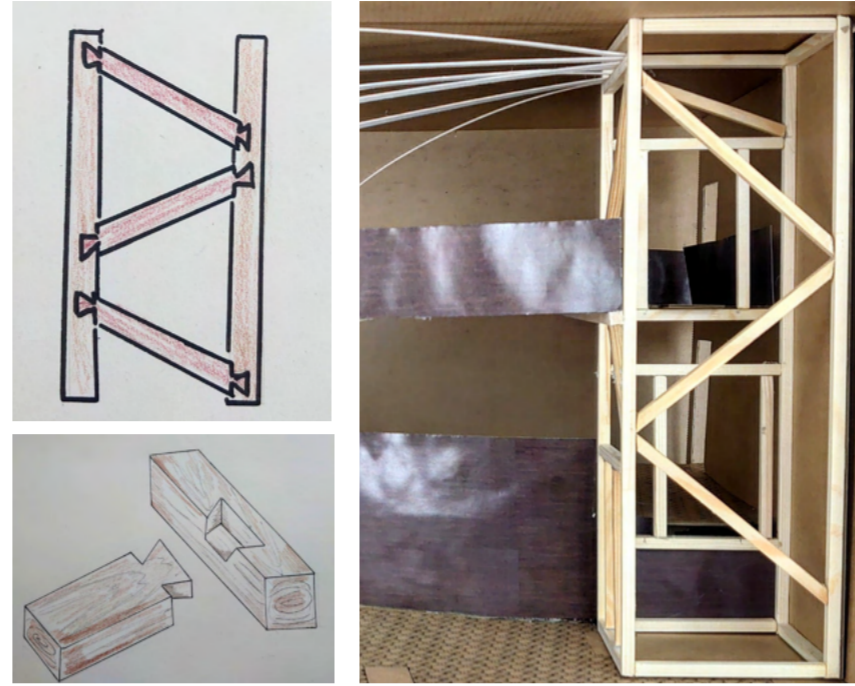
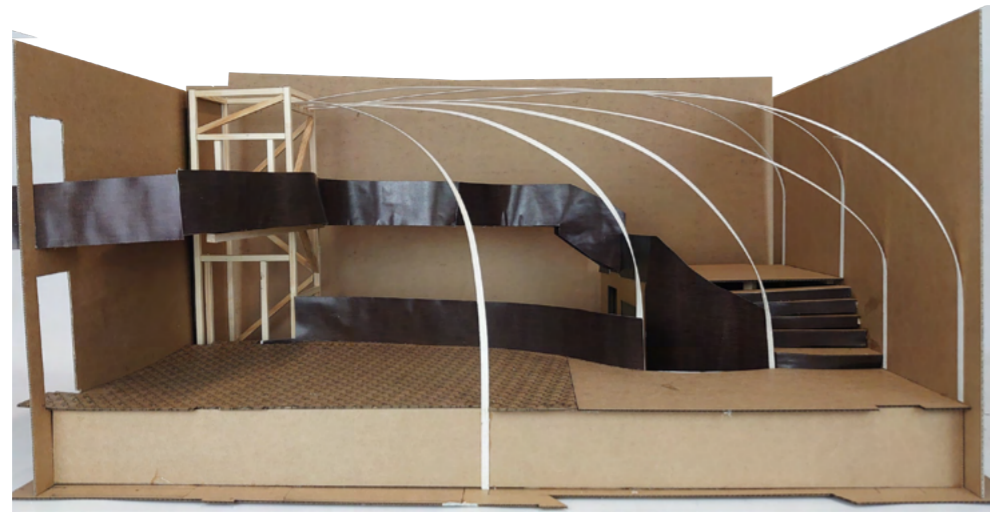


The sculpture's key elements will make for a new design to the elevator and will make it not only functional, but also a key element that adds to the atmosphere of the space.

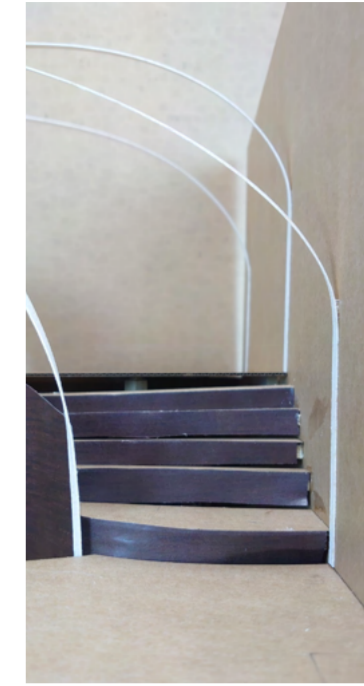
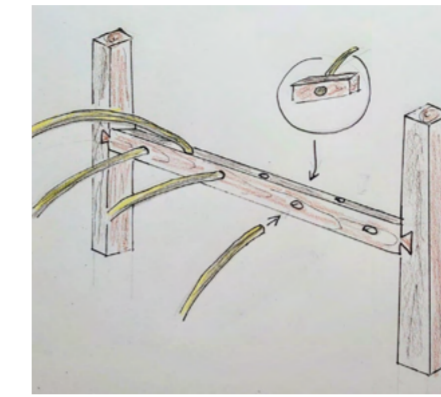




The latticed walnut that surrounds the glass elevator acts as a foundation for growth, from where copper rods stems out, adding a fifth layer to the space.



The extrusions from the elevator connects with entry points to emphasizes the different pathways the visitor can take.



The spaces will be connected with natural materials of warm wood stone, and copper to give it an industrial feel while maintaining the warmth.

In the greenhouse the walls will have exposed brick to bring the outside inside and give the industrial heritage a nod.

As for the welcome area a concrete cladding will give the space a raw look and reflect its surroundings with brutalist architecture and an industrial feel. The concrete gives the sense of something being built and the start of new life.



National Theater

Plants

Lime Stone

Clear Glass



Copper

Black Walnut
Resin bound
Aggregate



Bargehouse

The furniture will have a fluidity and organic shapes to contrast the industrial interior. Upholstered furniture in pops of colour will add a lively element to the otherwise neutral decor.



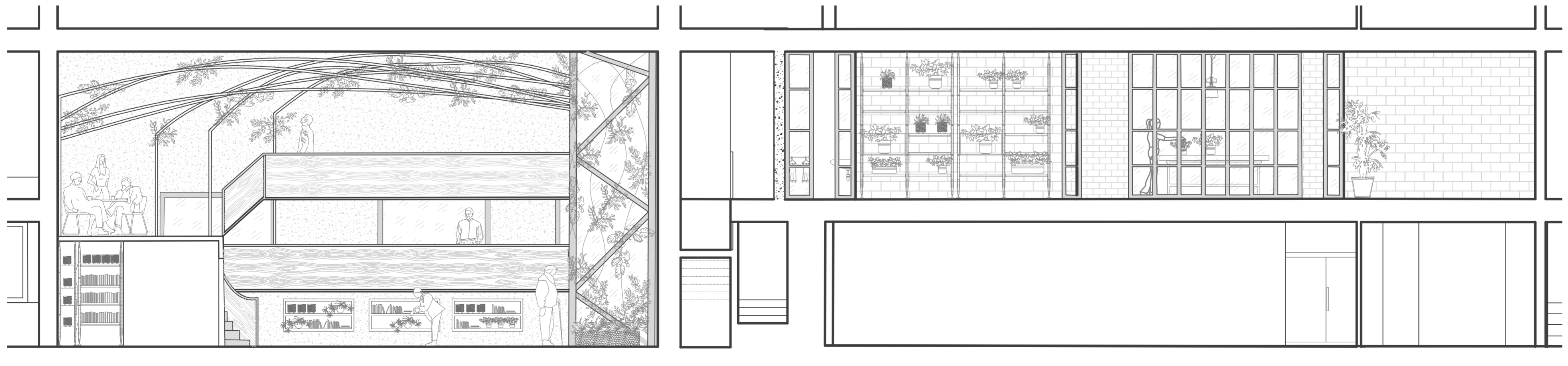
Clap Studio for Missana

Osaka Sofa by Pierre Paulin

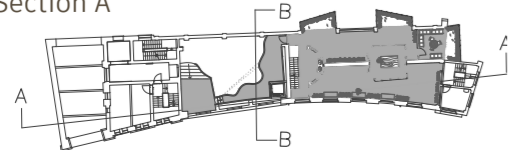
Verner Panton

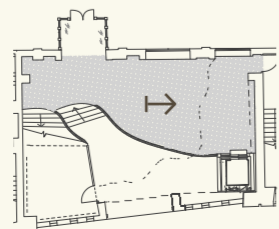
Melt Table by Marble Ballon

Snobietta



Section A





An inclusive gathering place for the community to nourish, support, and strengthen the community and its residents collectively.

People are brought together for a variety of reasons by the intricate use of space, and multiple pathways bring them face to face and foster interaction.

