

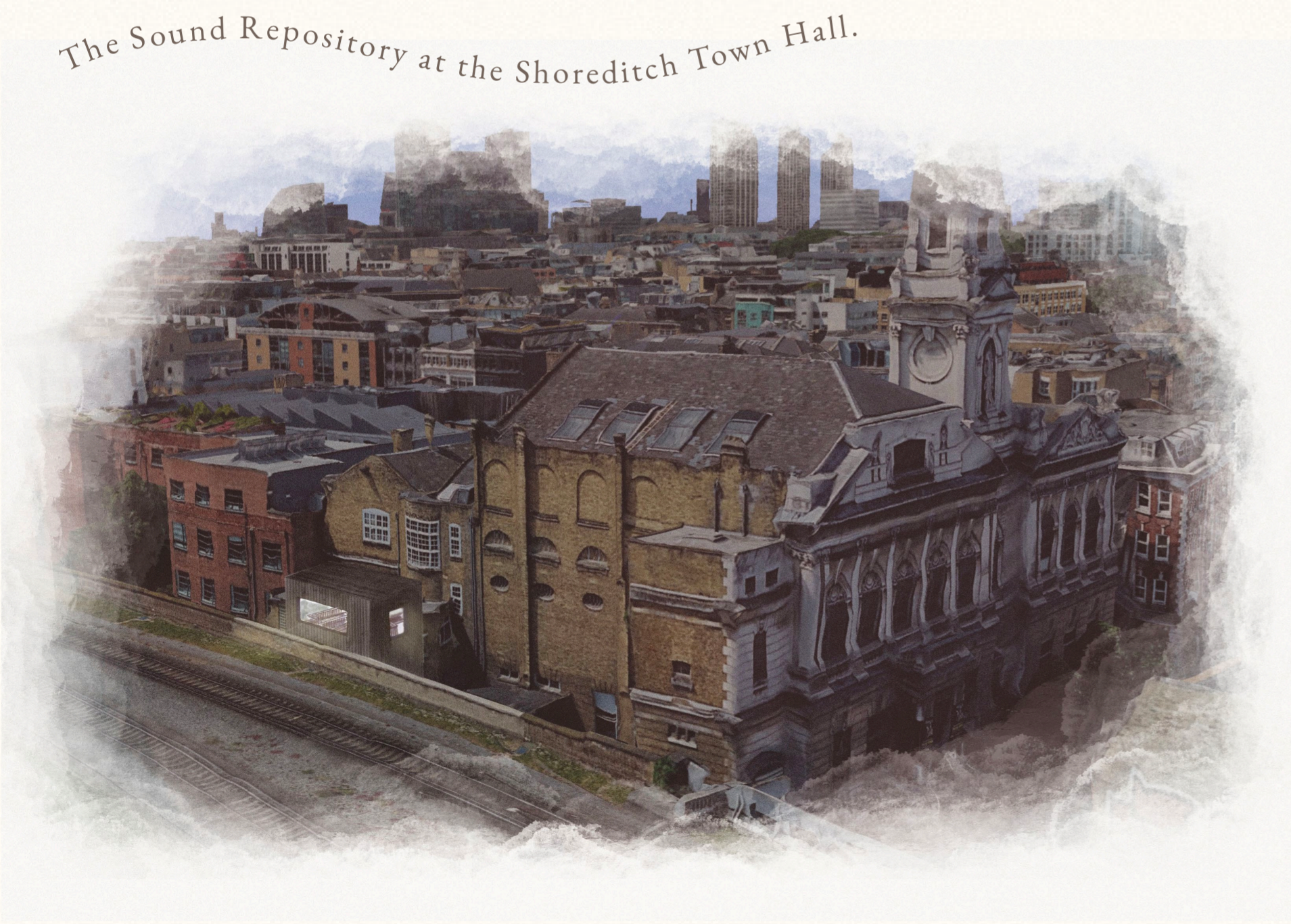
The Sound Repository

Inside the Shoreditch Town Hall

The East End Women’s Museum in London is the only museum dedicated to the stories of women in England. The Sound Repository proposes a new satellite branch of the museum located in Shoreditch Town Hall to record, research and share the stories of women in the audio-story archives in the Sound Library, which, collects historical as well as contemporary recordings.

In parallel, the Sound Repository also houses the Music Academy sponsored by the London Music Fund, who are working in collaboration with the museum to provide a musical education focusing on classical music, teaching instruments like the piano, violin and cello to underprivileged women and girls.

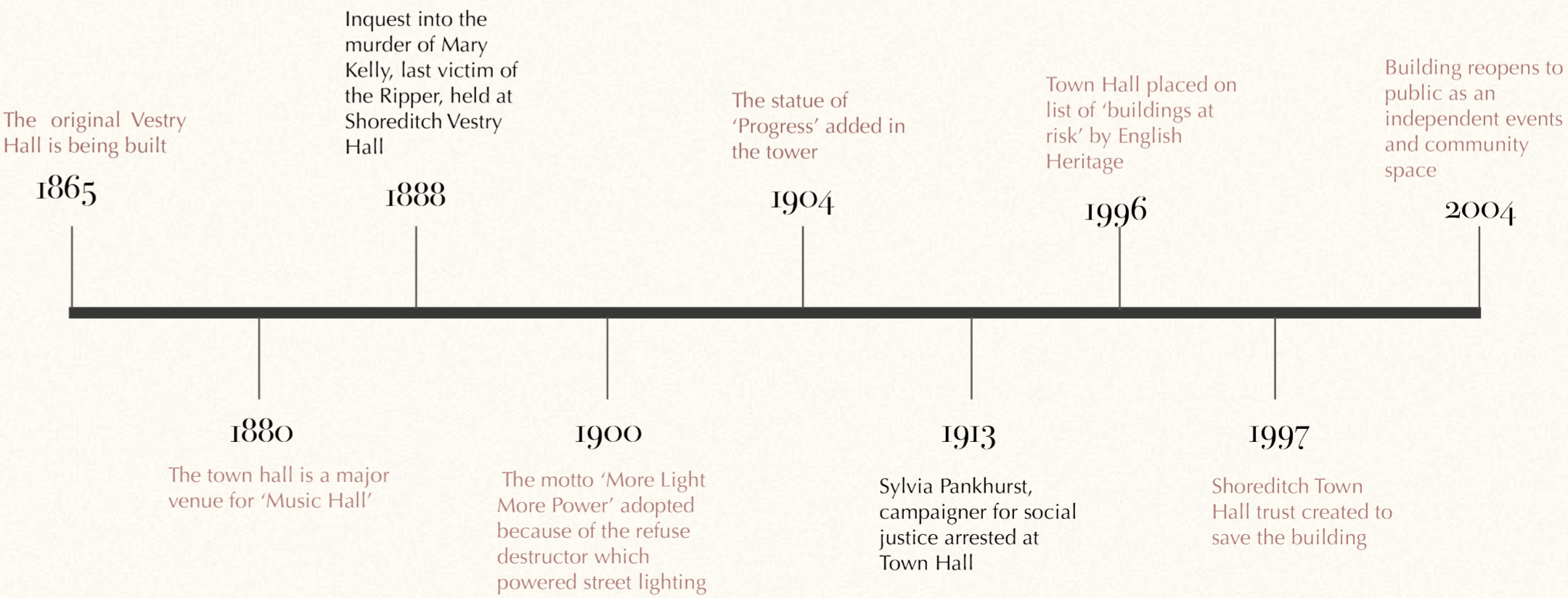
Each individual story told about a woman’s past and present, is overlaid with a unique musical score produced by the students of the academy. This layered experience is recorded and preserved in the story archives for the general public to listen to, learn from and reflect upon.



Researching, recording and sharing women’s stories.



The Client



Historic Timeline of the Shoreditch Town Hall

The Women Of Shoreditch

Inspiring Legacies

The **stories** of the people who live and have lived in Shoreditch are fascinating. Some of these people (mostly men) are celebrated through the **blue** and **brown plaques** in this area. But what of the stories about the women of Shoreditch, who have contributed to the rich history? What of the ordinary women who may want to share their story?

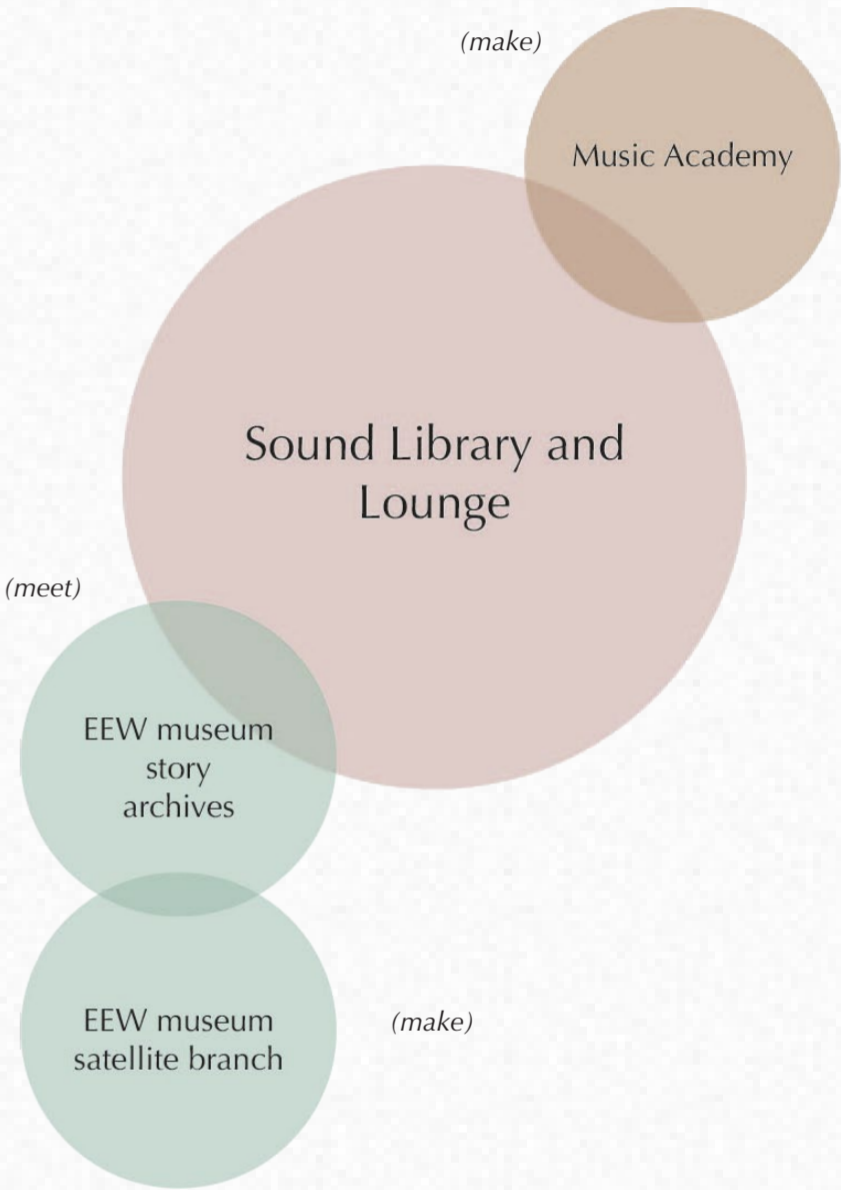


Rose's Story

Local resident, Rose Streatfield, in an interview with the Shoreditch Town Hall, describes a library that used to exist inside Shoreditch Town Hall accessed from an alleyway, at the rear of the building.



Programme



Blue plaques

Brown plaques

No plaques in this area



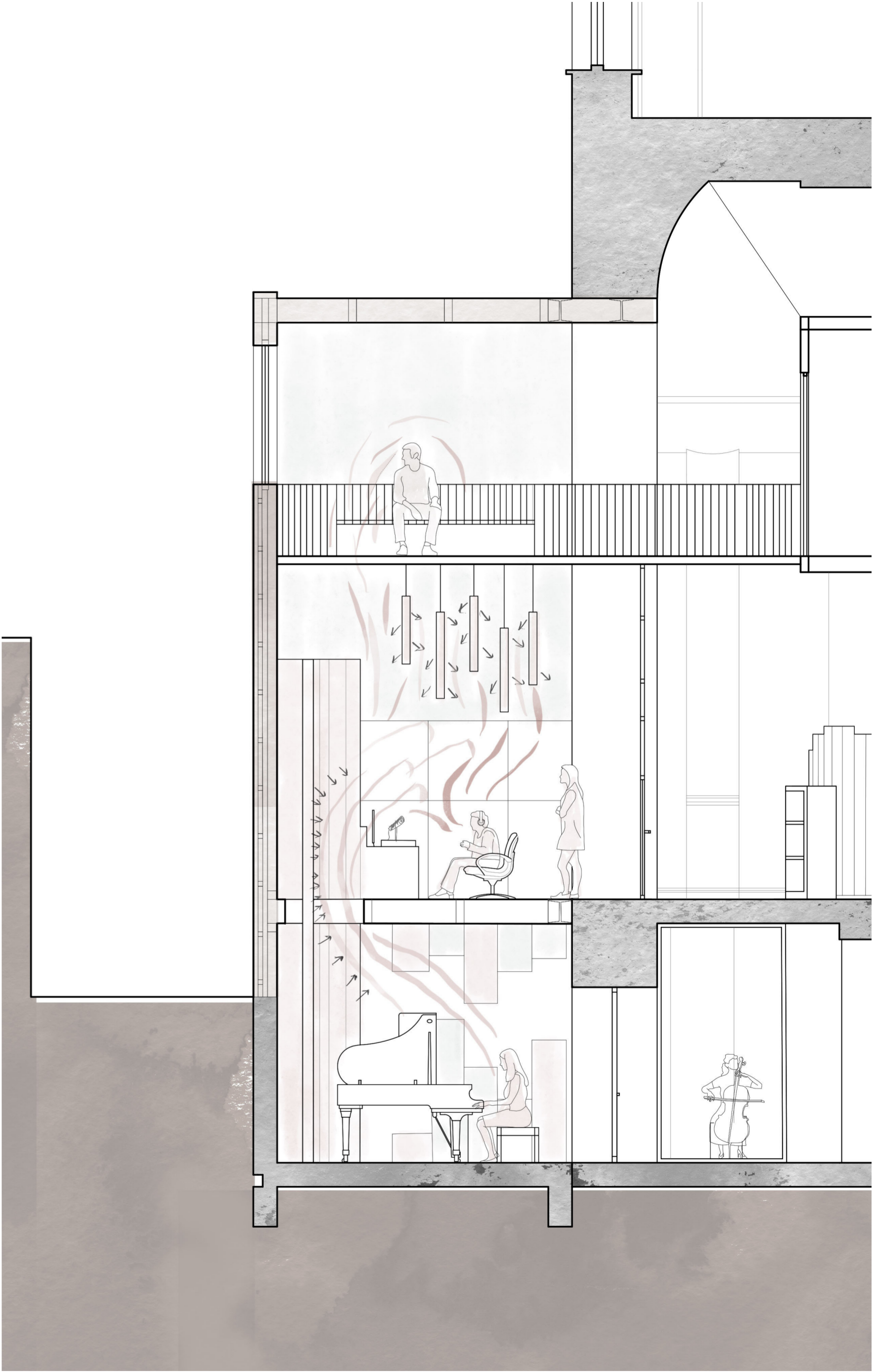
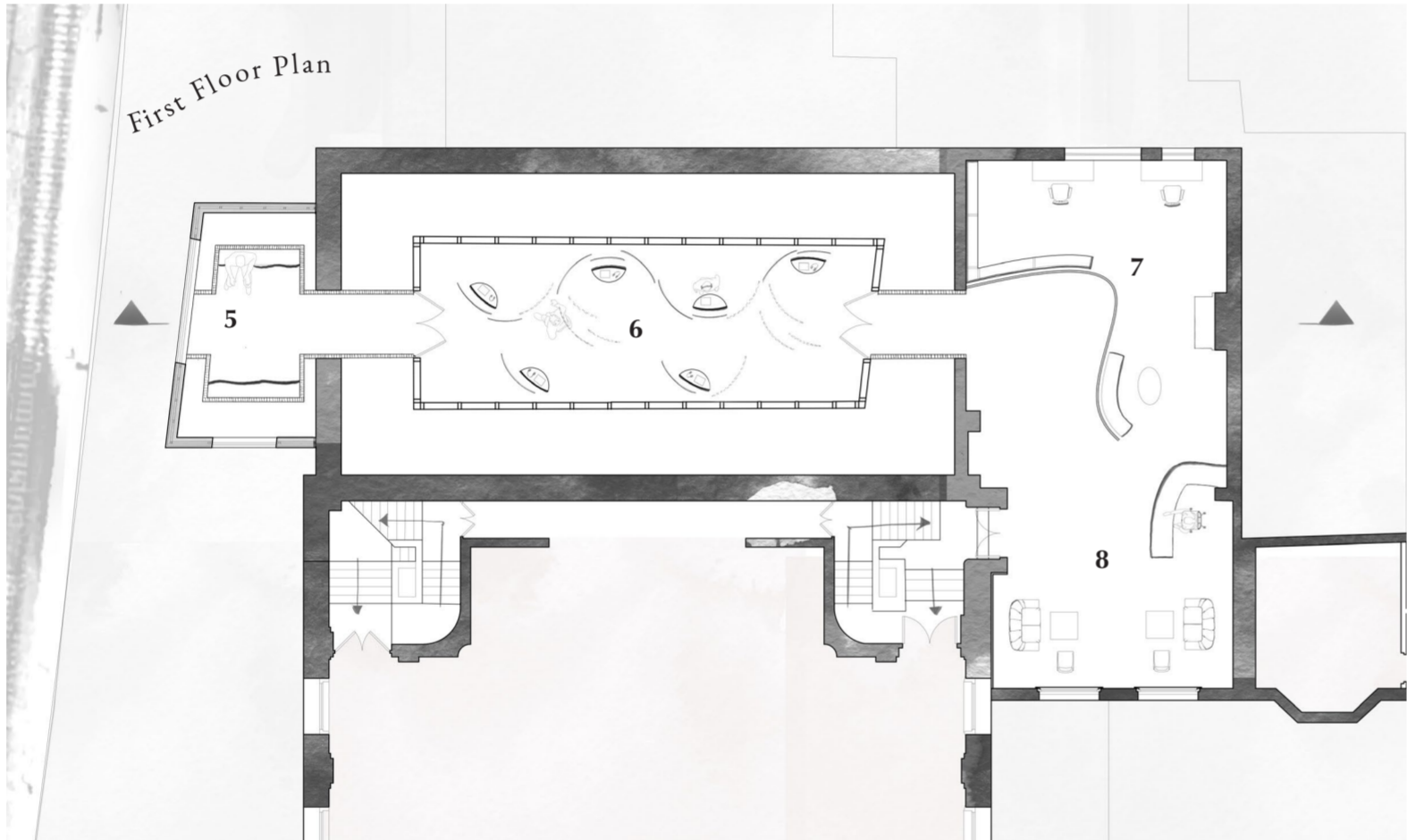
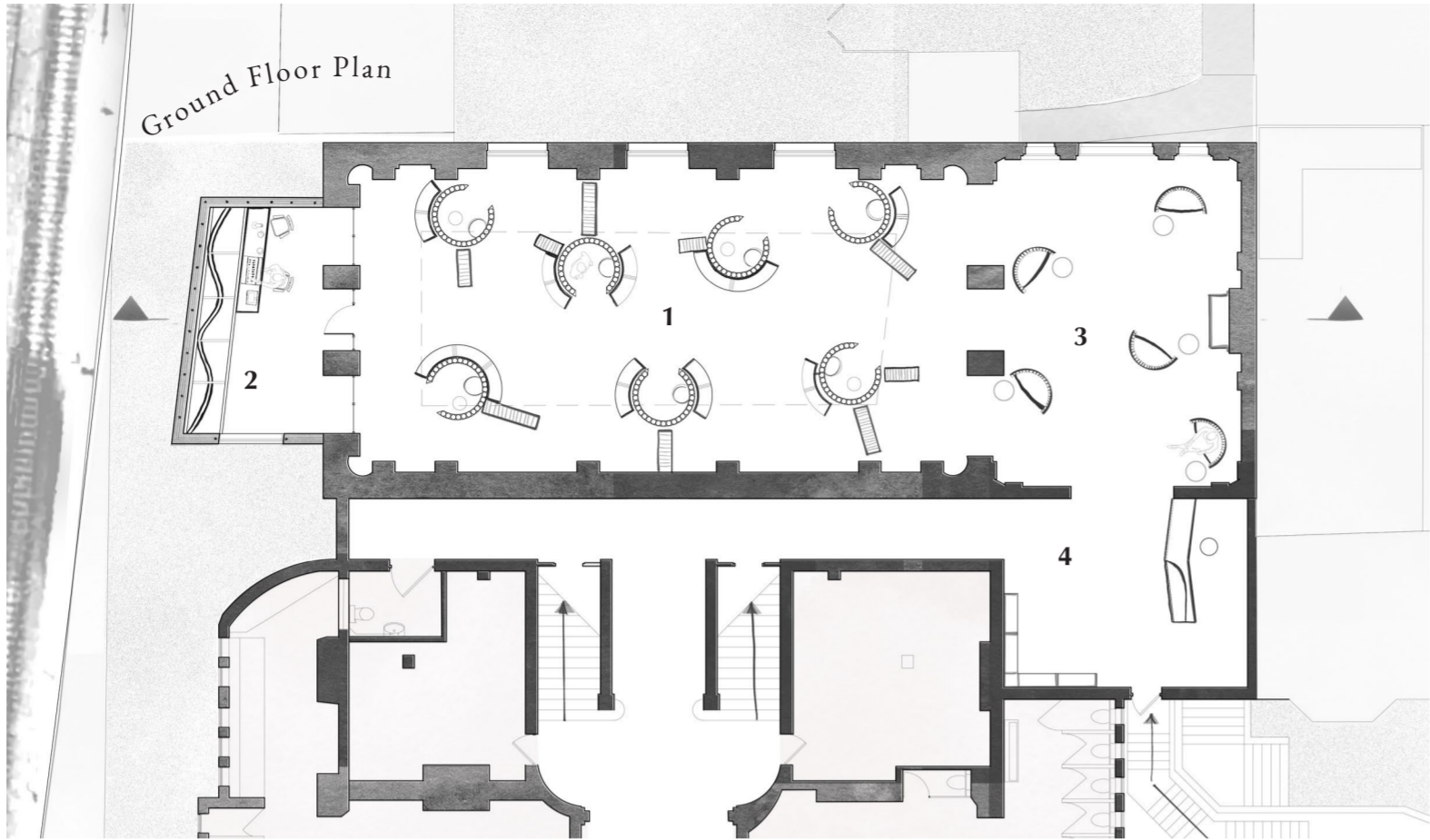
Marie Lloyd's Blue Plaque on 55 Graham Road

The Score

A Spatial Sonata

Key

- 1 Library of Sounds
- 2 Vertical Recording Suite (recording women's stories)
- 3 Lounge
- 4 Reception and Bookstore
- 5 Spectator's Balcony
- 6 East End Women's Museum floating audio- story archive
- 7 East End Women's Museum satellite office branch
- 8 Archive and office reception and waiting area
- 9 Music School Practise Rooms
- 10 Music School Reception
- 11 Recording suite
- 12 Teaching room



Detail Section showing vertical recording studio and intermingling soundscapes

Soundscapes

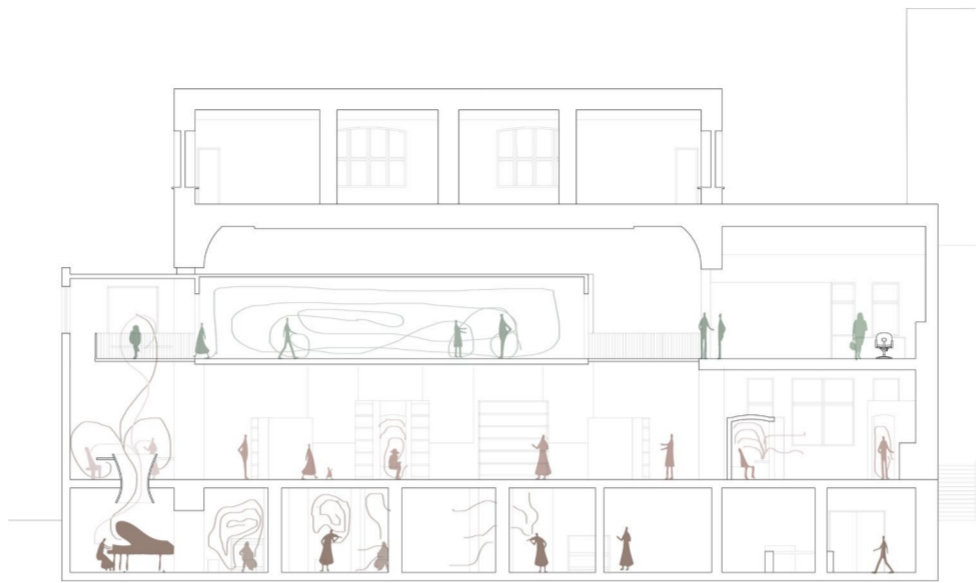
Weaving Stories and Music

Key

- 1 Spectator's Balcony
- 2 East End Women's Museum Audio-Story Archive
- 3 East End Women's Museum satellite office branch
- 4 Recording suite (storytellers)
- 5 Library of Sounds
- 6 Lounge
- 7 Recording suite (music)
- 8 Music School Practise Rooms
- 9 Music School Ensemble area
- 10 Music School Reception



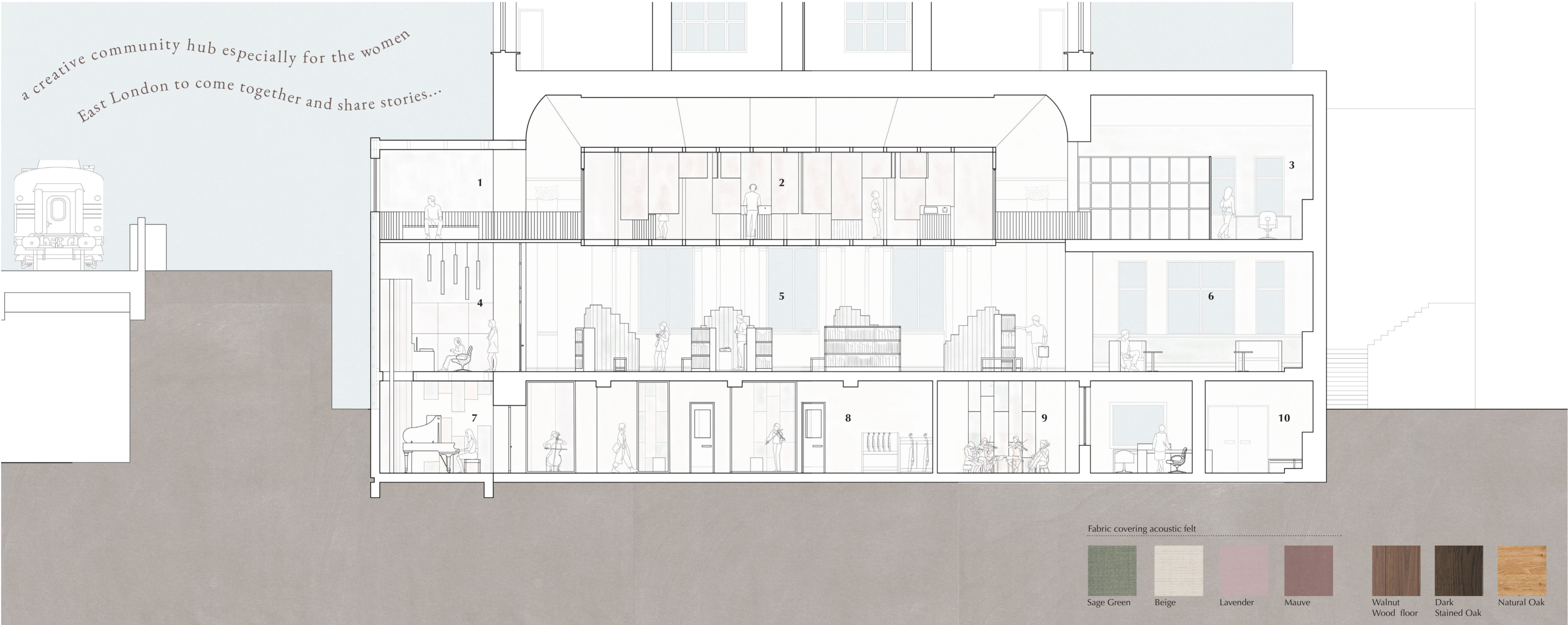
Section Sketch - a spatial sonata



Section Sketch - mapping soundscapes



A library of sounds for all...



Section Drawing

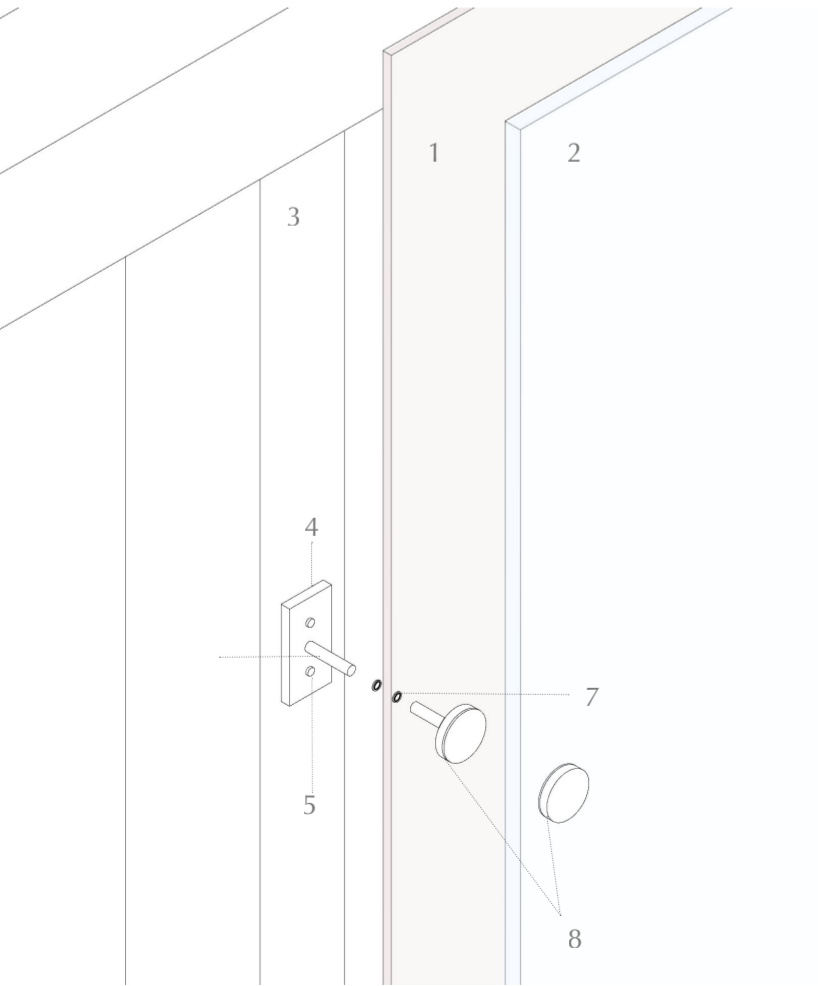
The Archive

Listen. Learn. Reflect. Share.

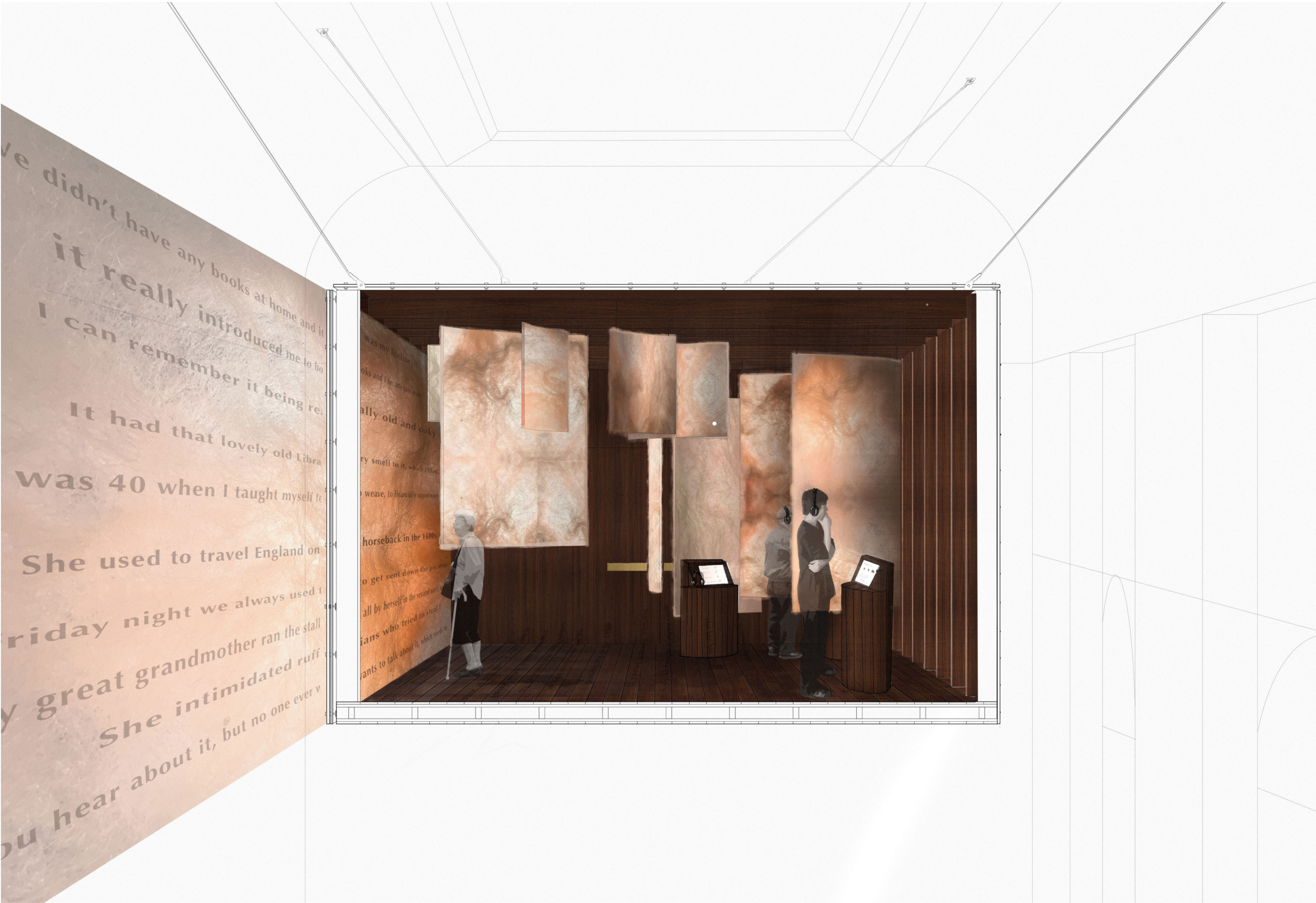
The story archive, visible from the library of sounds as a mysterious entity suspended in mid-air, sits in poised tension, while the rhythm of people's activities in the library of sounds makes itself known just below it. The felt used is created from the scrap wool and fabric offcuts of the surrounding furniture industry and nearby fashion school.

Key

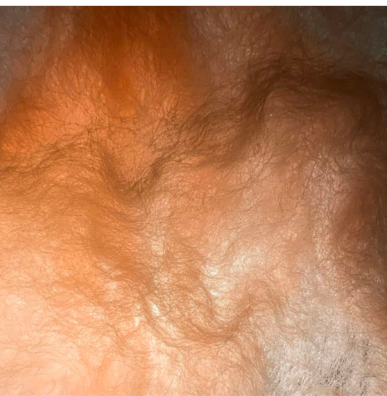
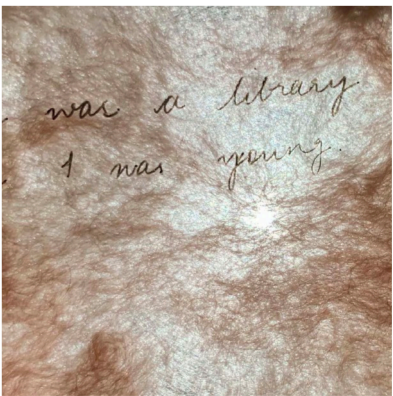
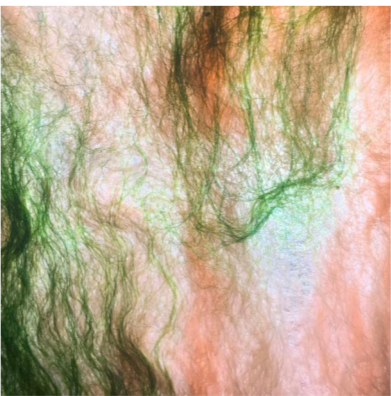
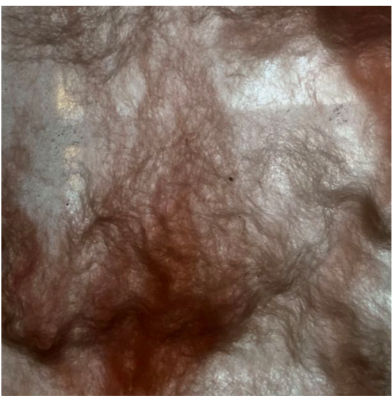
- 1 felt
- 2 glass
- 3 glulam beam
- 4 100 x 50 mm metal plate
- 5 M4 screws
- 6 thread rod (internal diameter 10mm)
- 7 eyelets
- 8 clamps with rubber fixing



Detail Drawing - fixing and layering of glass and felt on glulam beam



An immersive and emotional experience bringing people together with stories and music. Empowering Women to share their stories and encouraging people to listen and reflect.



Felt created from scrap wool fibers that intertwine. Changes in materiality and opacity depending on light.