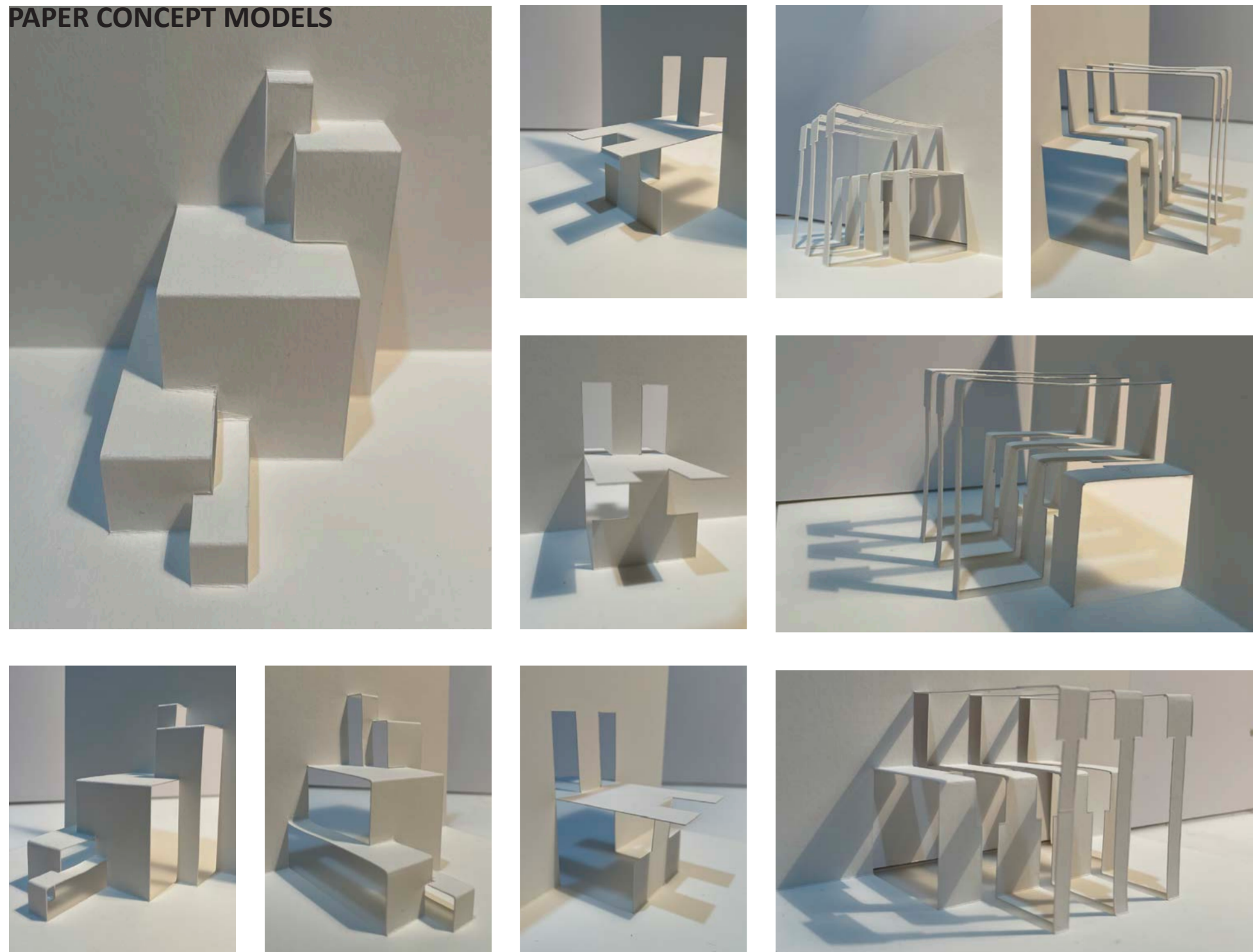


PAPER CONCEPT MODELS



A WOODEN REFUGE

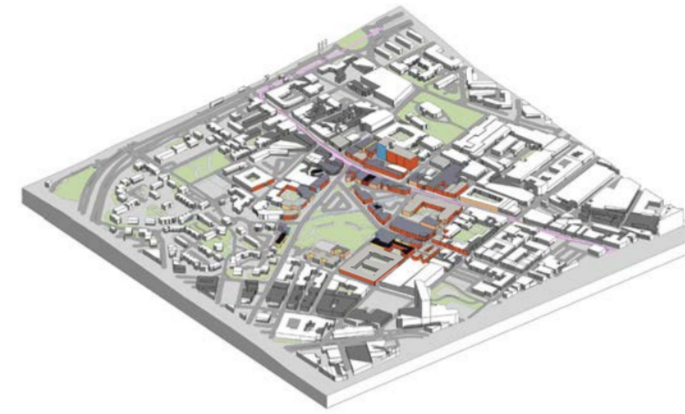
Design a refuge in the city, based on the requirements of a particular, defined user or users and responding to the site and context. You are to consider how we may find shelter in the city, a moment for pause, retreat, reflection or protection. Explore how a space encourages and transforms into a place through human occupancy and inhabitation.

Site Location:

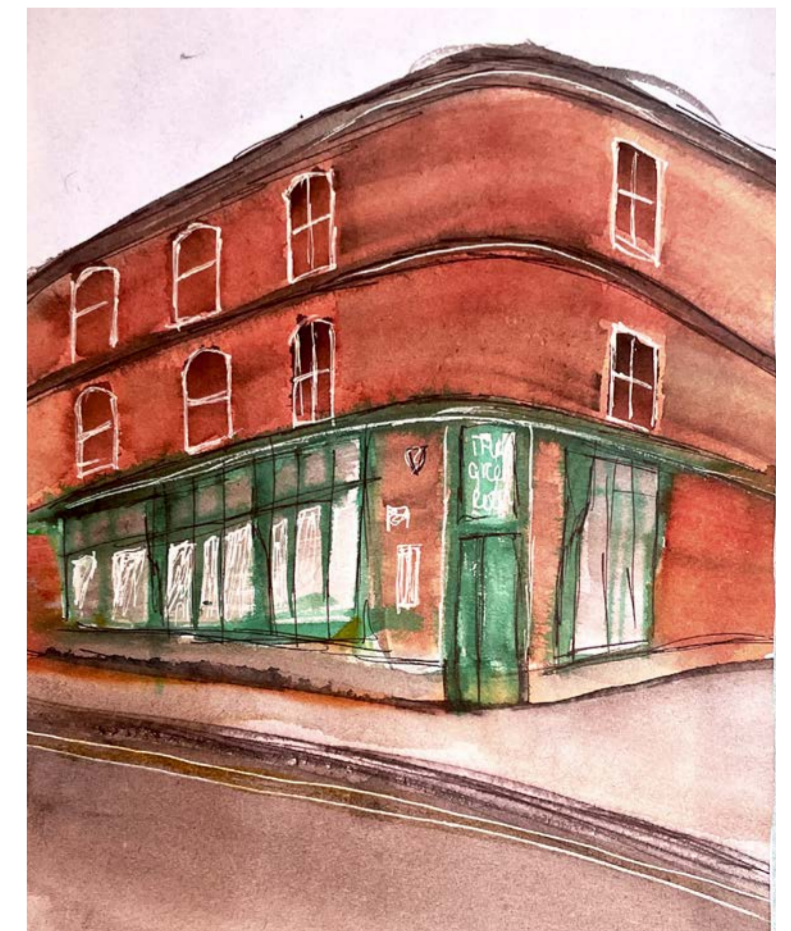
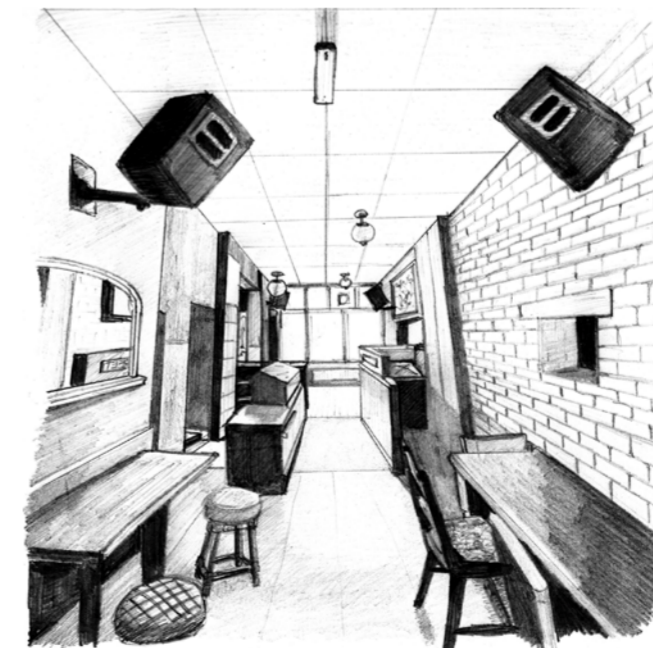
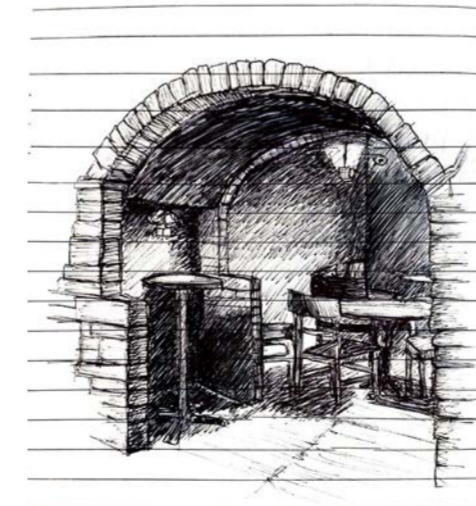
The site for this project is 150-154 Devonshire Street, Sheffield, S3 7SG.

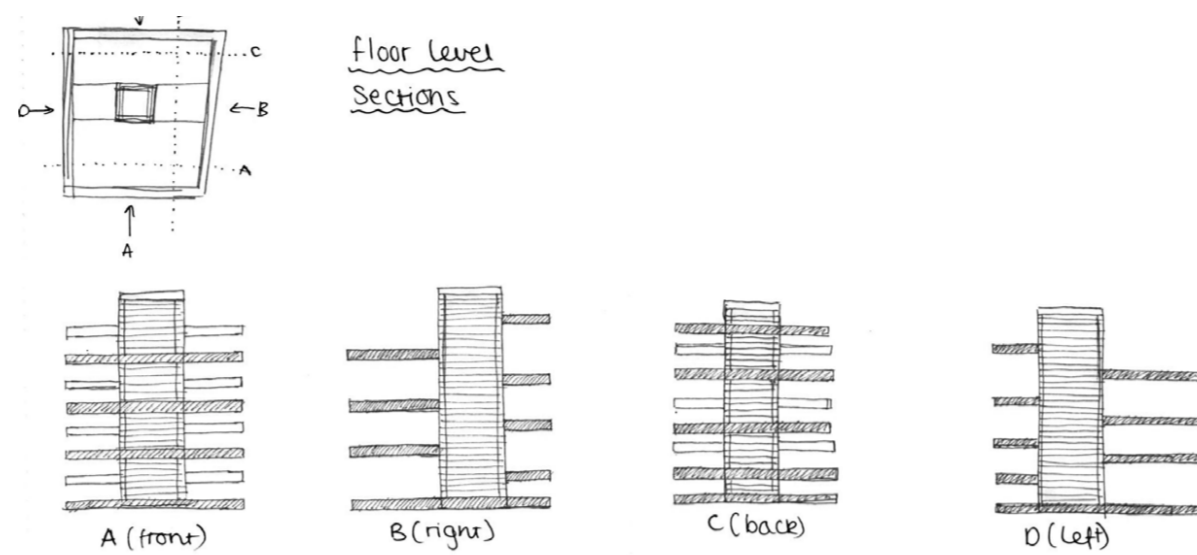
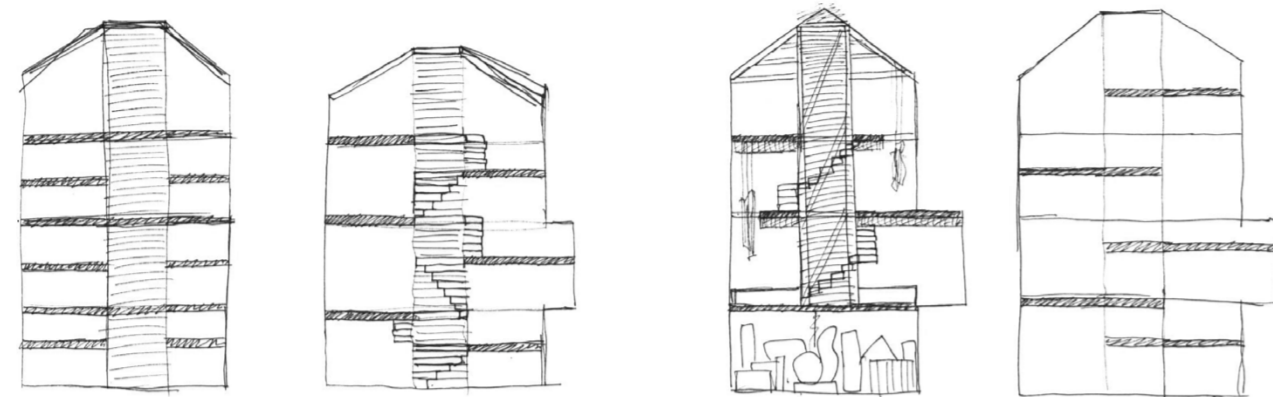
MATERIALITY

Both Devonshire street and West street, consist of a large amount of brick buildings, however West street has a wider variation of different materials and textures. The main texture of the buildings on West street looked at, were brick, painted brick, wood, stone and corner steel. The corner steel building, which is student accommodation, is locally known as the 'urdy box', which is the most distinctive and eye-catching part of the building's facade. This inspired me to use a completely different feature for the outside of my building to make it dramatic and to have a curved impression on people as they pass it. The second most popular texture in the close proximity was a cream painted brick. These are mainly located on west street, used for accommodation, mainly on top of the brick ground floor.

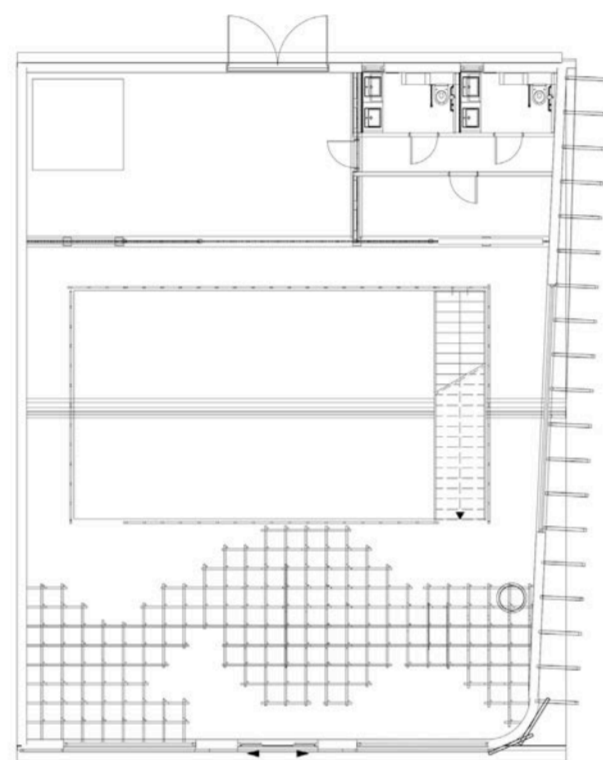
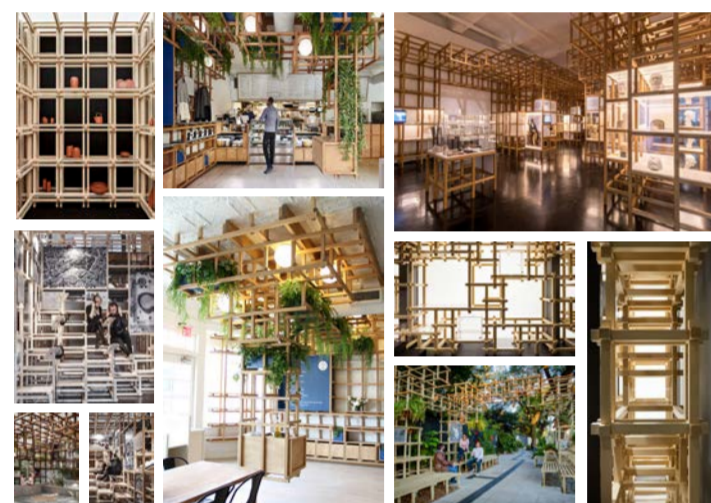


GROUND FLOOR

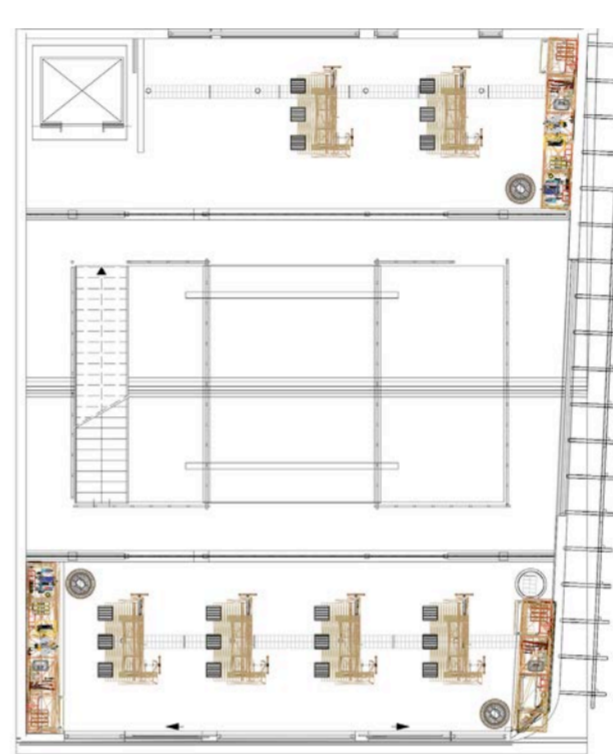




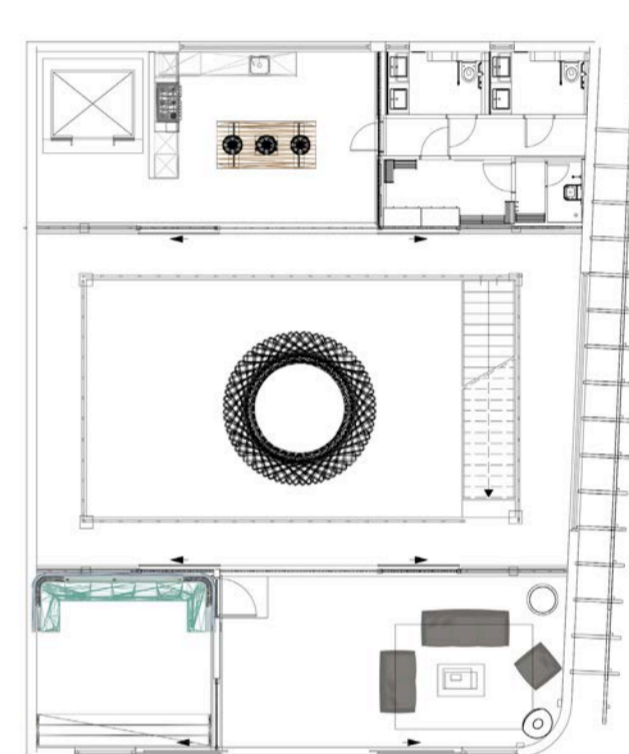
GROUND FLOOR INSPIRATION



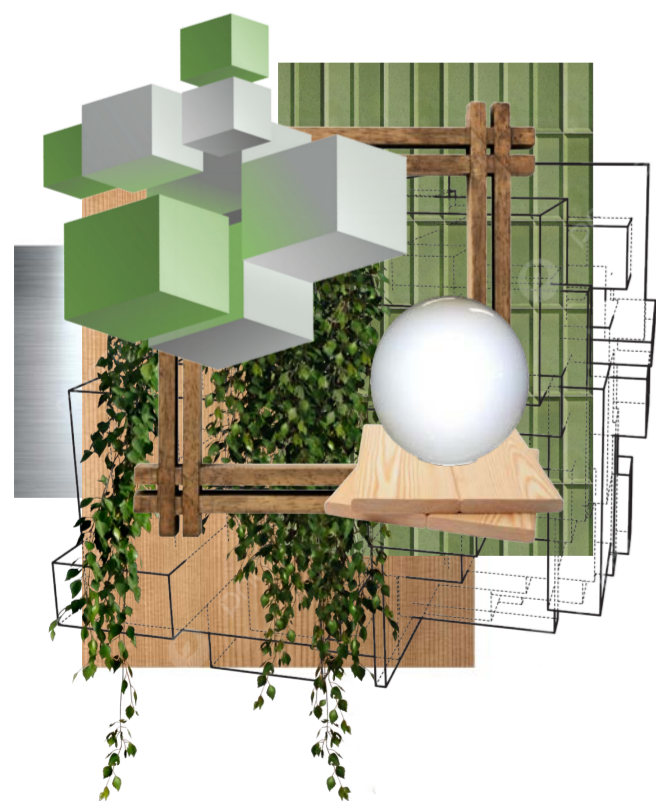
FIRST FLOOR INSPIRATION



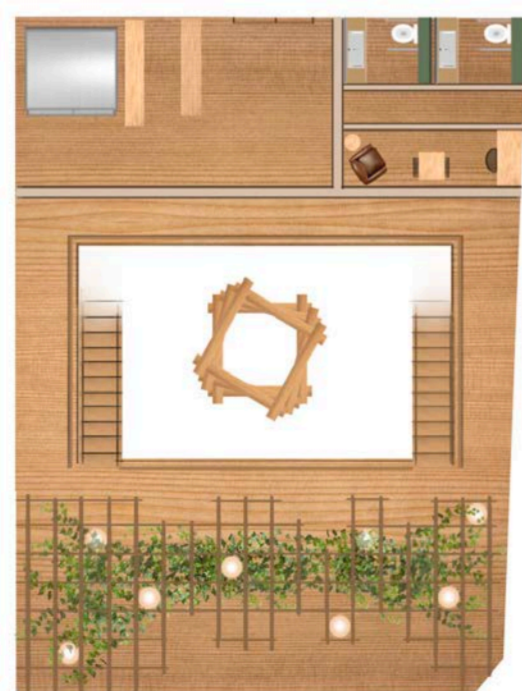
SECOND FLOOR INSPIRATION



GROUND FLOOR TEXTURES AND PLAN



FIRST FLOOR TEXTURES AND PLAN



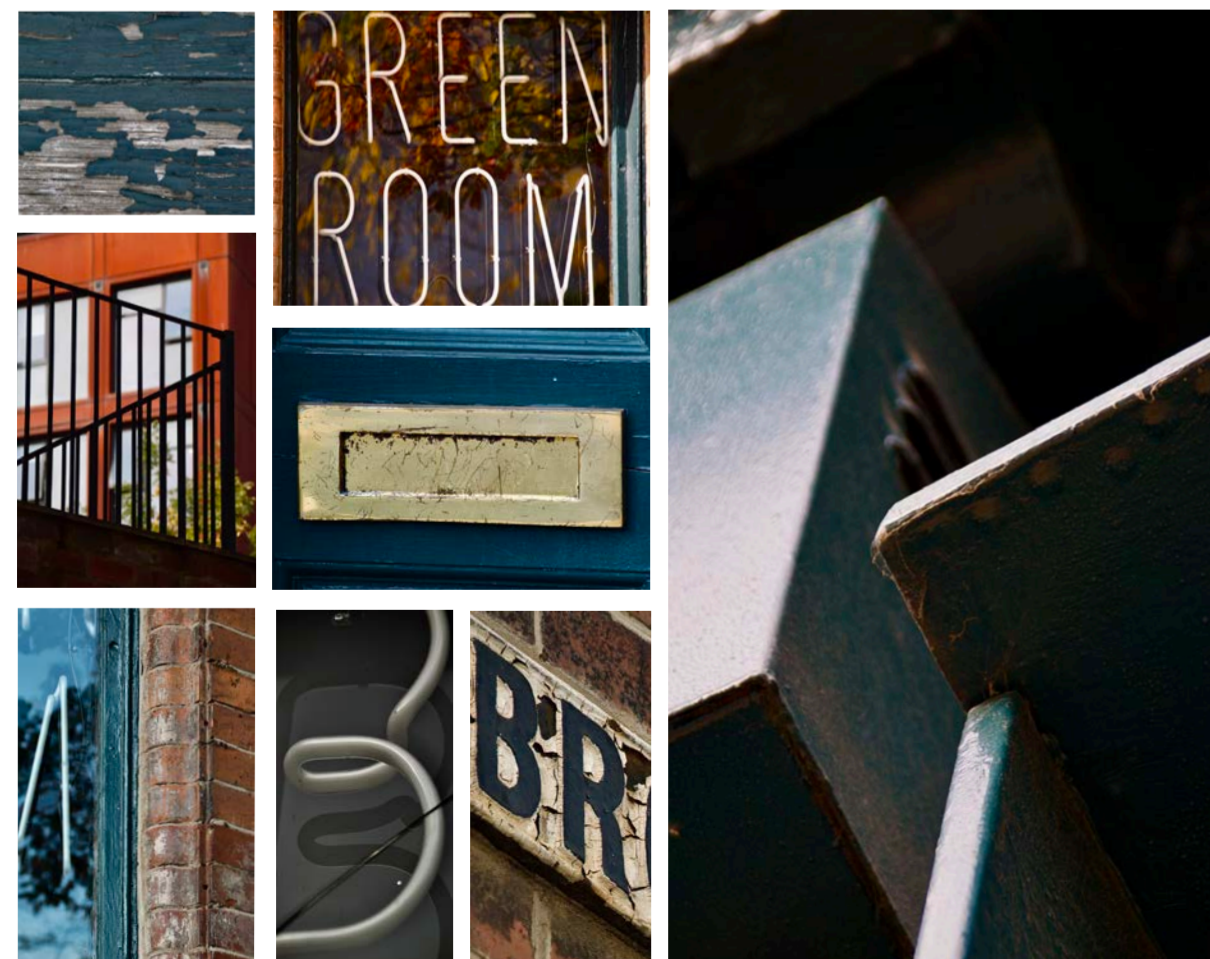
SECOND FLOOR TEXTURES AND PLAN



ATRIUM DRAWINGS



GREEN ROOM- CLOSE UP

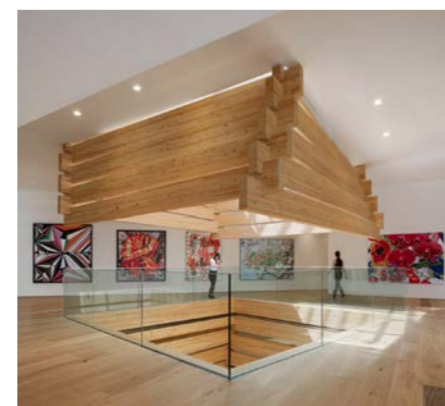


ODUNPAZARI MODERN MUSEUM

The Odunpazari Modern Museum is situated in Turkey, designed by Kenjo Kuma and Associates. It was built and opened in 2019, to house the collection of architect and chairperson of Turkish contractor Polimeks, Erol Tabanca. The museum will display items from Tabanca's 1,000+ piece collection of modern and contemporary art, alongside temporary exhibitions. The museum in the Odunpazari district of Eskişehir is formed of a cluster of boxes made from stacked, interlocking timber beams.

The building is designed so that there are smaller, more intimate spaces on the lower floors, with larger, open galleries for events and exhibitions on the upper floors. At the centre of the building, where four of the stacked blocks meet, there is a skylit atrium that stretches the full height of the three-storey building. The timber-lined square skylight twists gently as it rises through the building.

I specifically chose to exhibit this building, as I want to take inspiration from the timber skylit atrium and have something similar in the centre of the Green Room. I want to have separate floors in the workshop coming from the atrium, and plan to have the stairs inside, extending from the beams.



WHAT IS THE WORKSHOP FOR?



After researching into traditional Japanese woodwork, the art of Kumiko joinery stood out to me. Beginning as an artform in the 8th century CE and remaining an active form of carpentry in Japan to this day. The process involves interconnecting carved wooden pieces together, in intricate patterns, to create a finished panel without the use of glue, nails, or any other external tools. Kumiko panels slot together and remain in place through pressure alone, and that pressure is achieved through meticulous calculating, cutting, and arranging. The end result is a complex pattern that is used primarily in the creation of shoji doors and screens.

I want to incorporate a shoji screen into my design and maybe use these techniques in parts of the green room. I would have different courses for coasters, frames, panels and tiles, ranging from beginner, to intermediate, to advanced. With open workshops, where people apart of any ability in the course can go and practice in their own time, without being taught, but a teacher still present.

