

Bodyscape

Brief



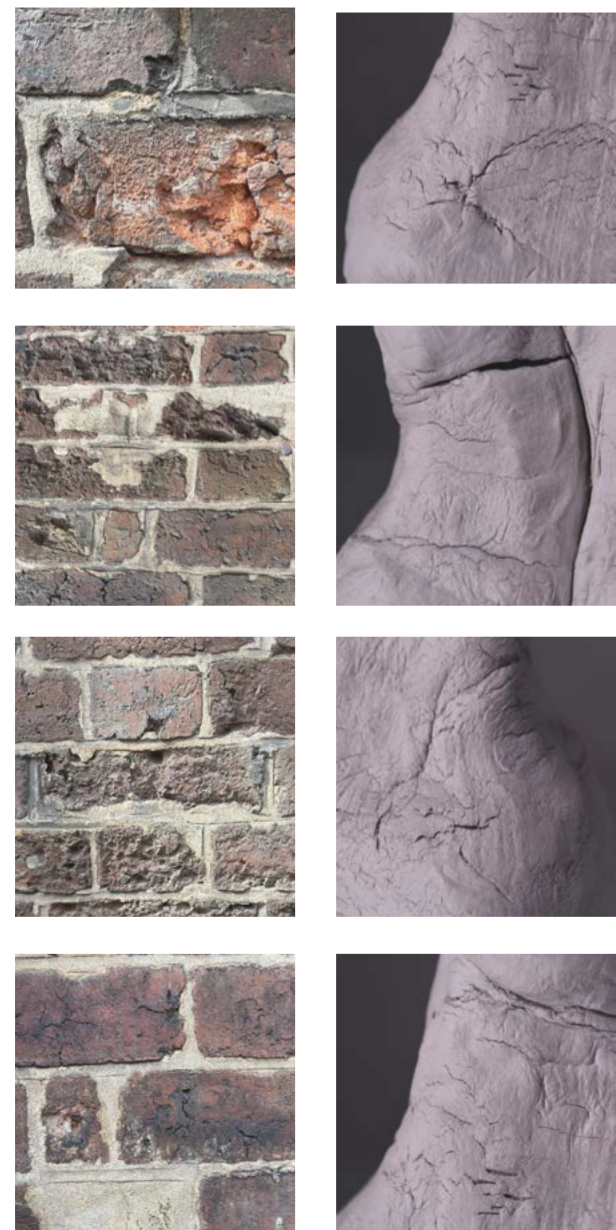
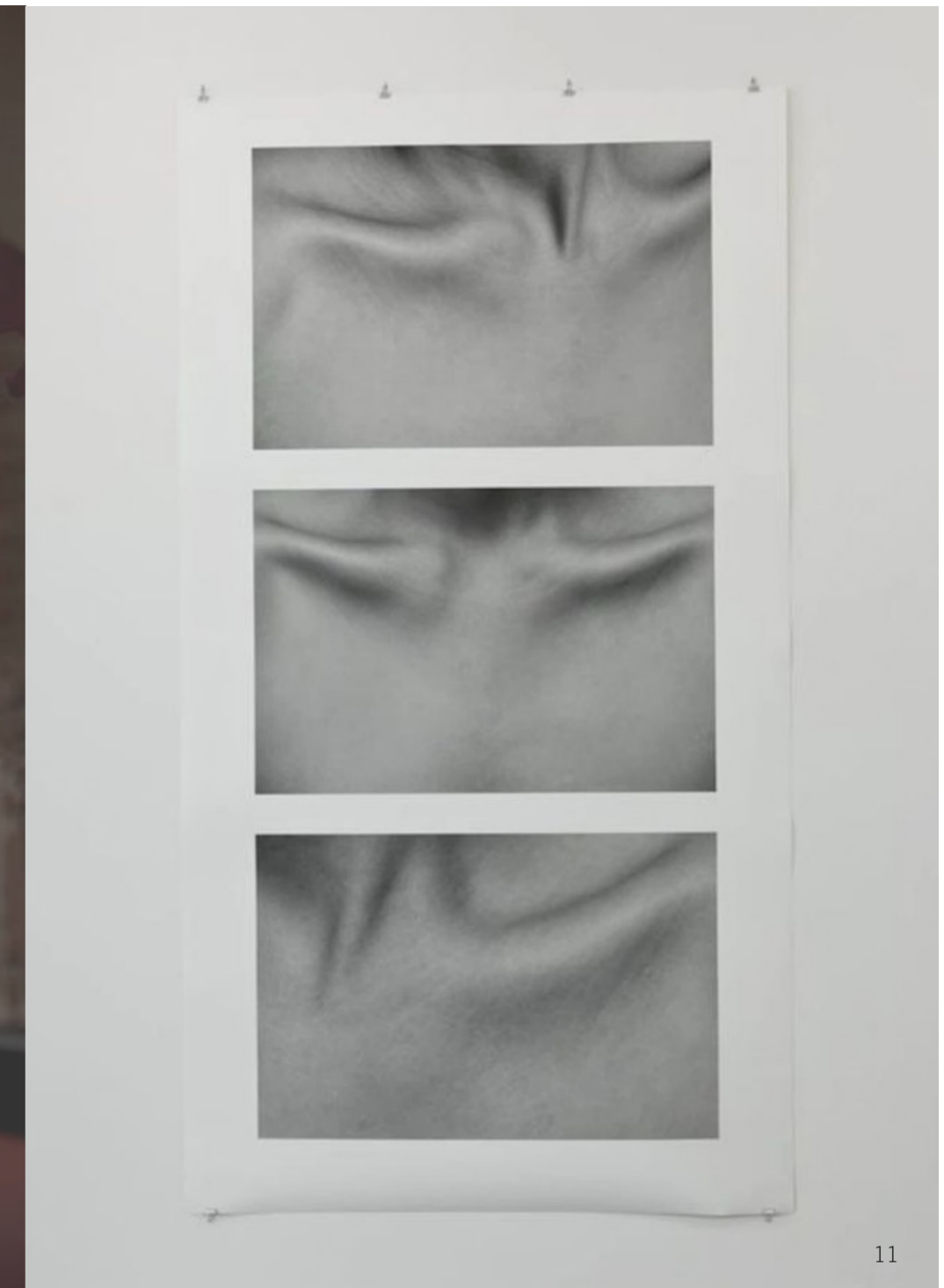
'Develop a design proposal for a place that promotes wellbeing in and around Bishops' Lodge.'

My project aims to build on the findings within my design research; the need to provide a welcoming space for women seeking to experience a sense of love and well-being.

I want to show how design features can reflect the perfect imperfections of the human body and build a loving, inviting and serene environment for women.

For example, the need to create privacy, serenity and homeliness, but also to create a sense of openness and connectivity with other women, nature and the external environment.

Psychologically, I want my design to encourage body positivity and self love, showing how even the most beautiful work cracks and ages over time.



Existing Material Clay model

Accepting the original brick for what it is, and embracing its 'imperfections.'

Bishops Lodge | Site

Clay Model | Bodyscapes



Materiality

Body, texture, colour palette

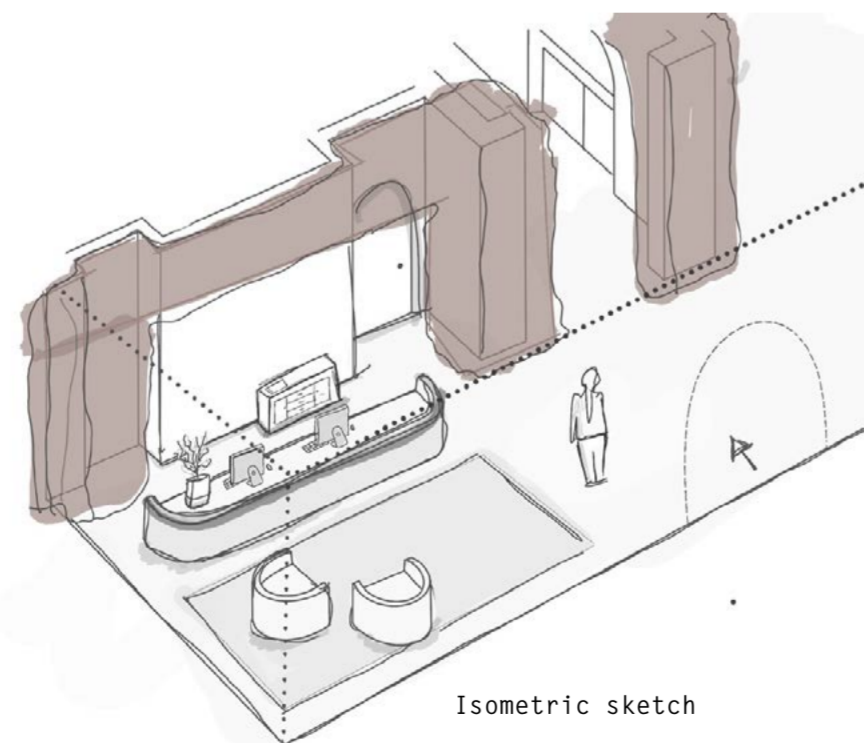




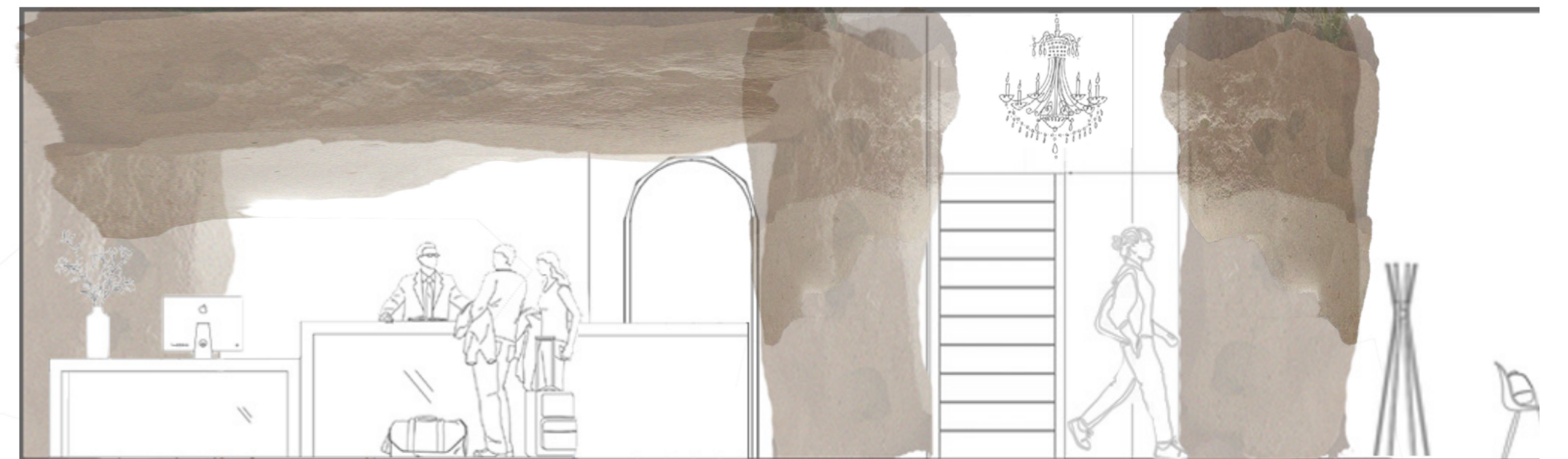
Entrance Visual | Vectorworks, Photoshop



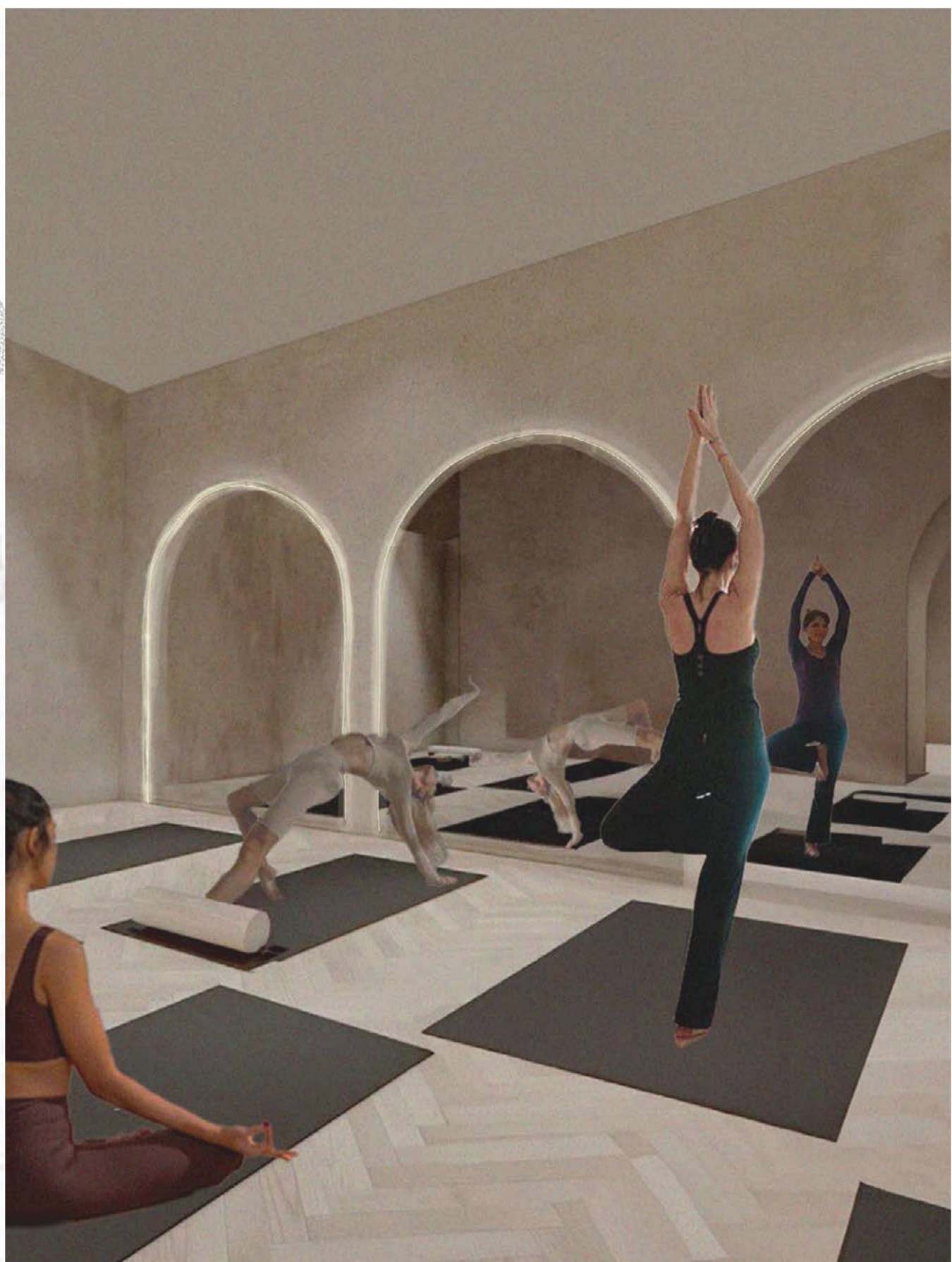
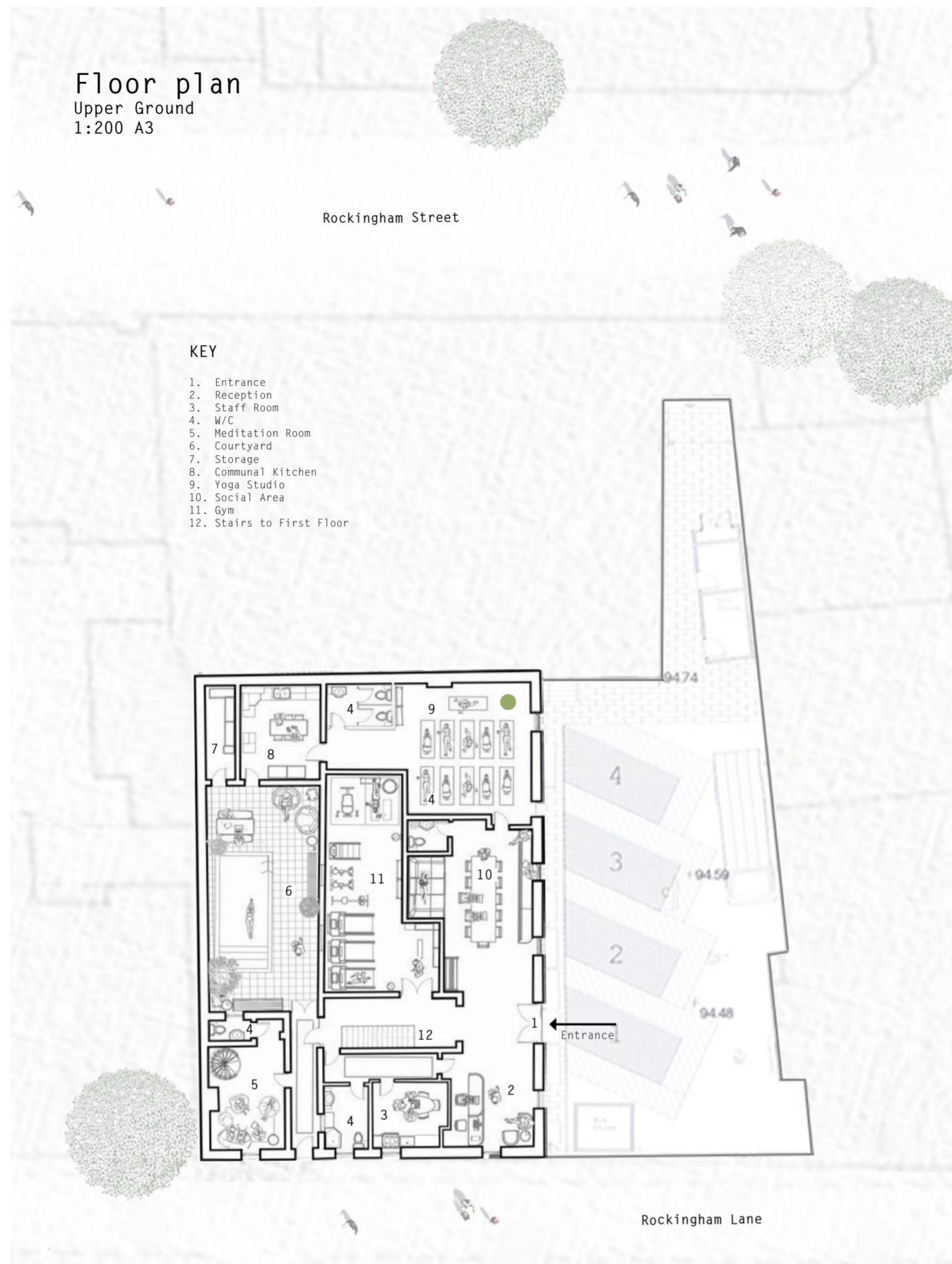
Location plan



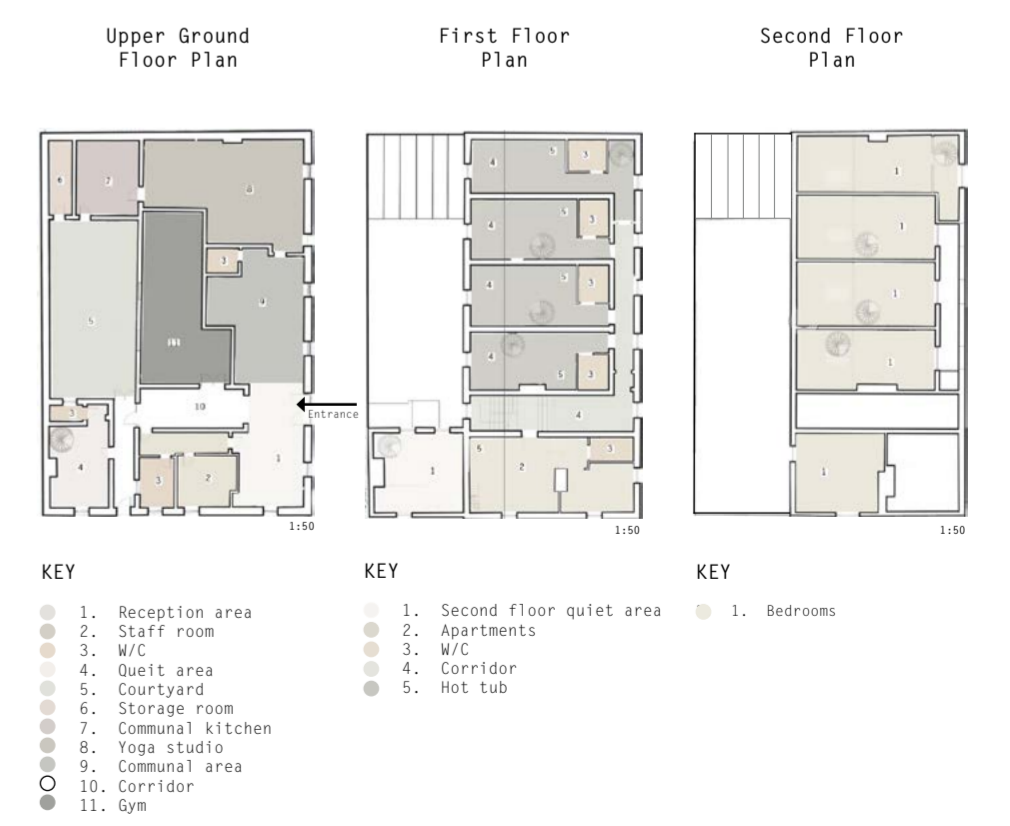
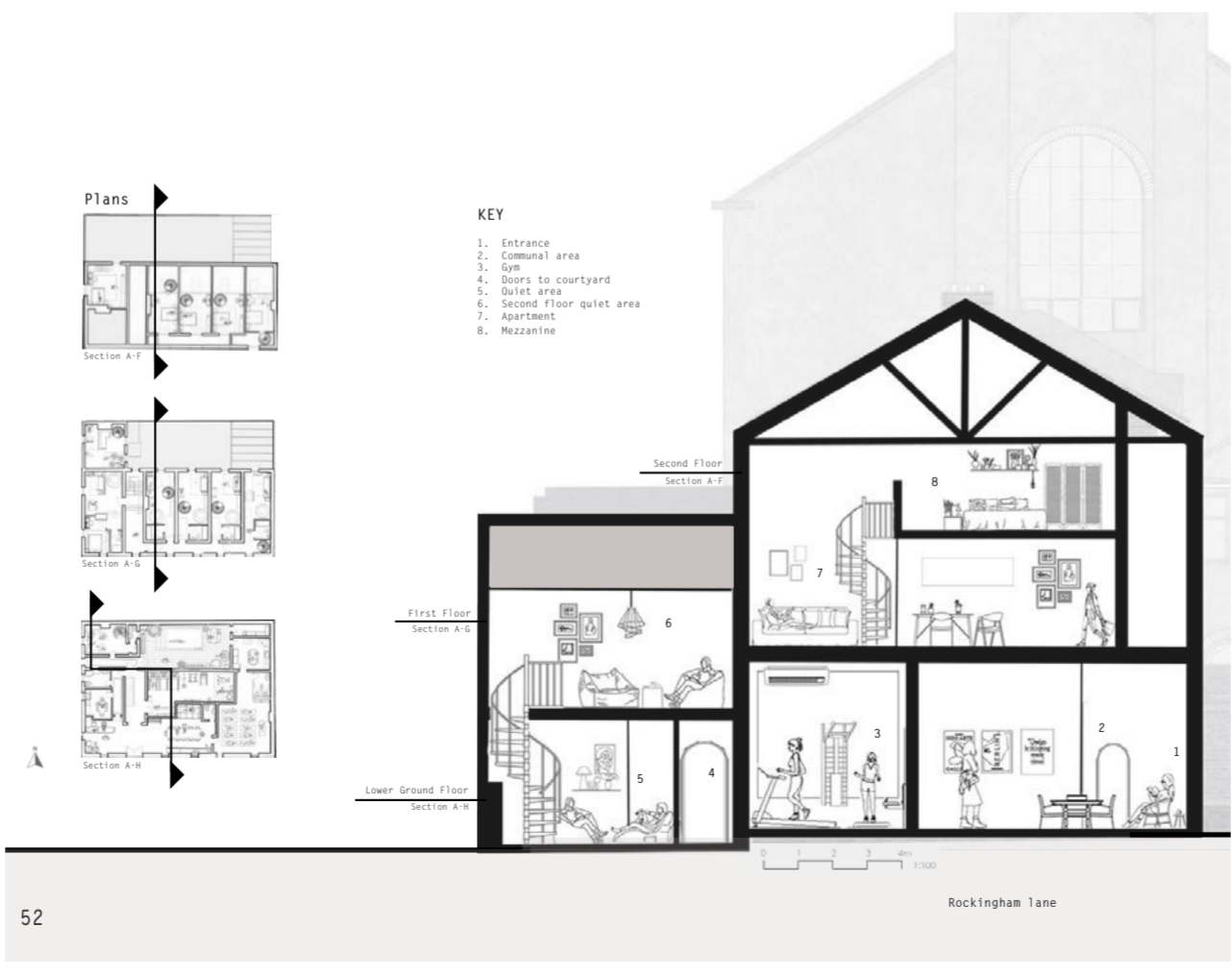
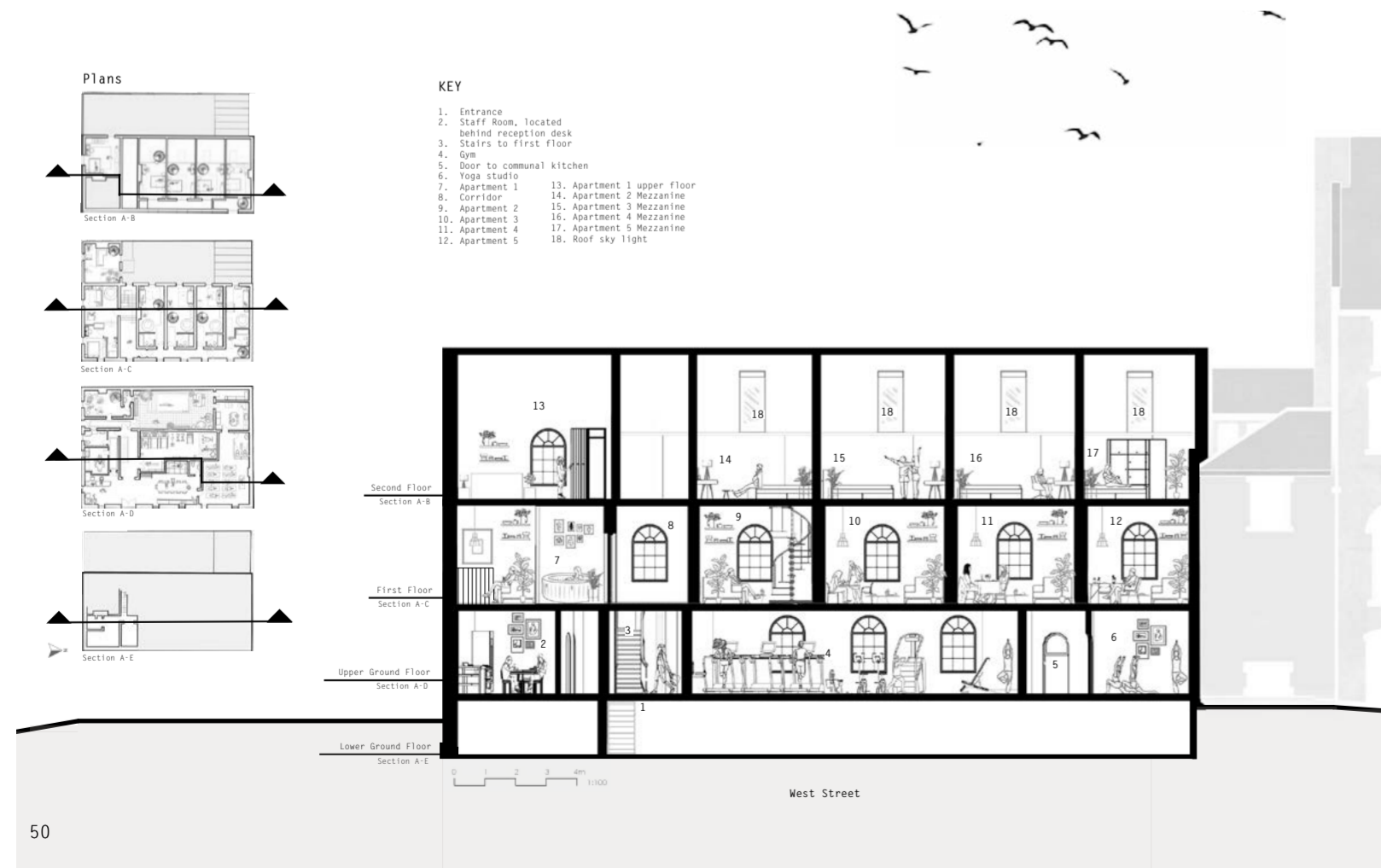
Isometric sketch

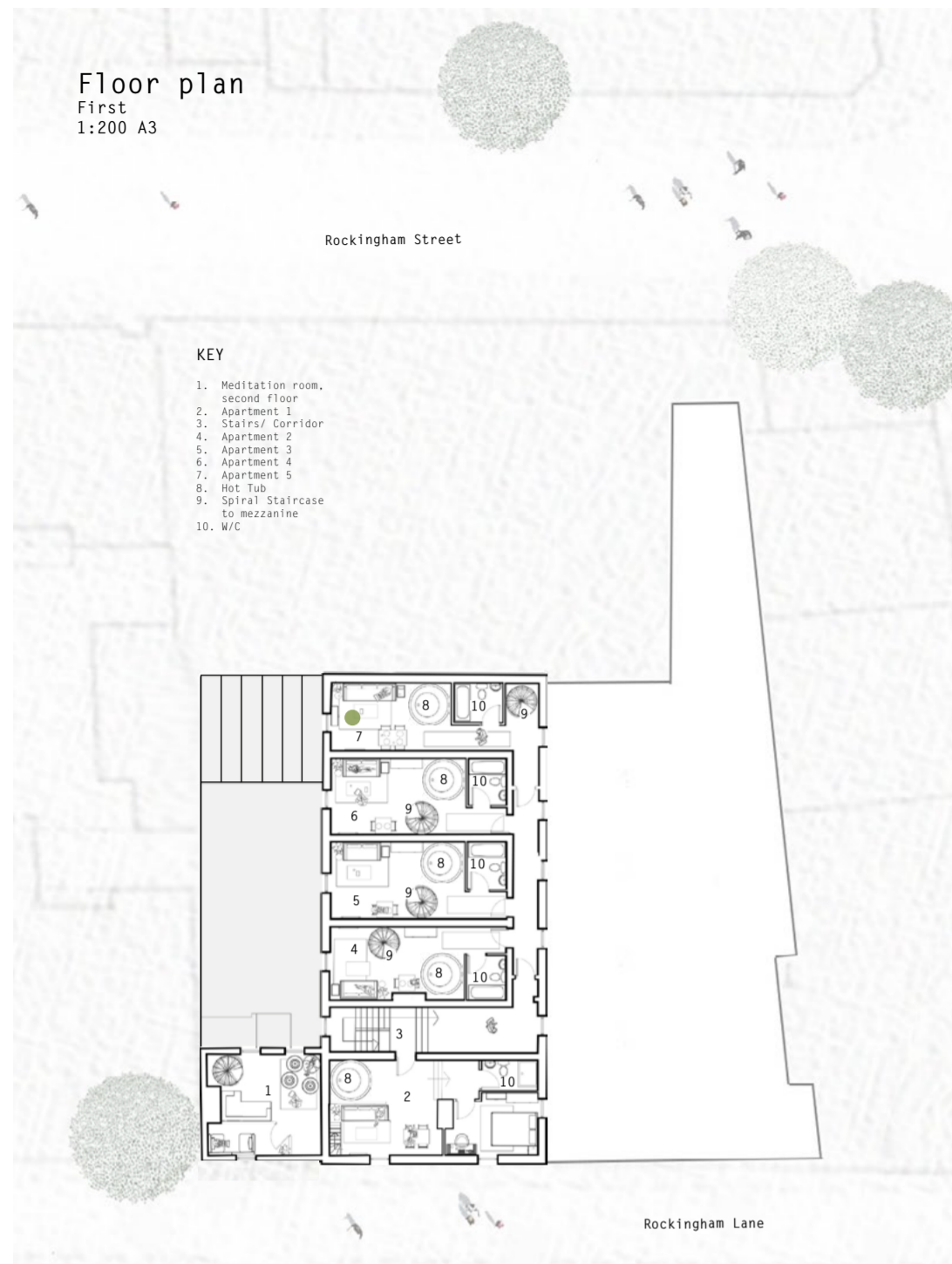


Section 1:50



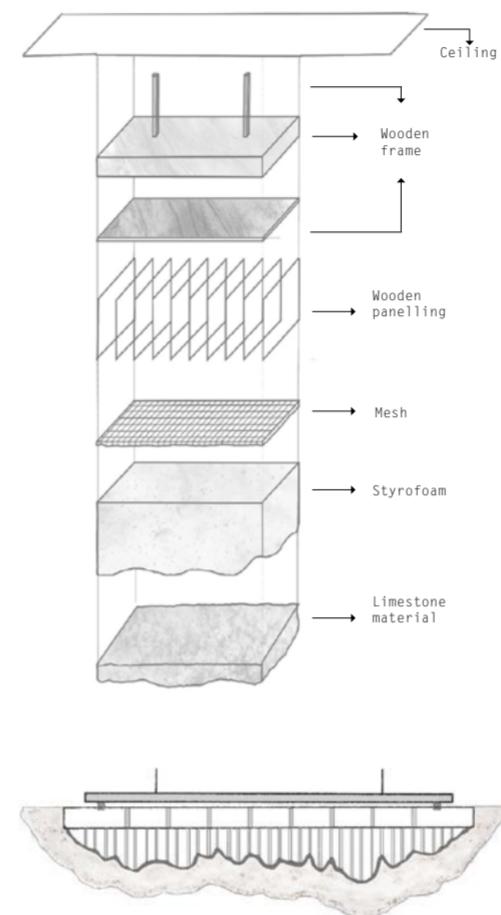
Spatial Planning Zones



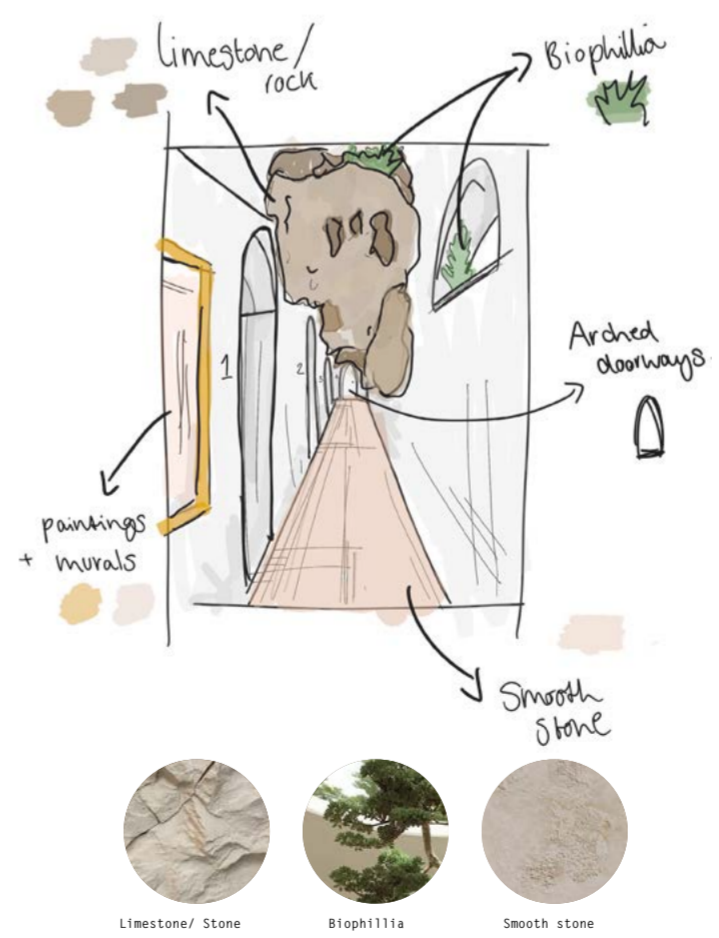
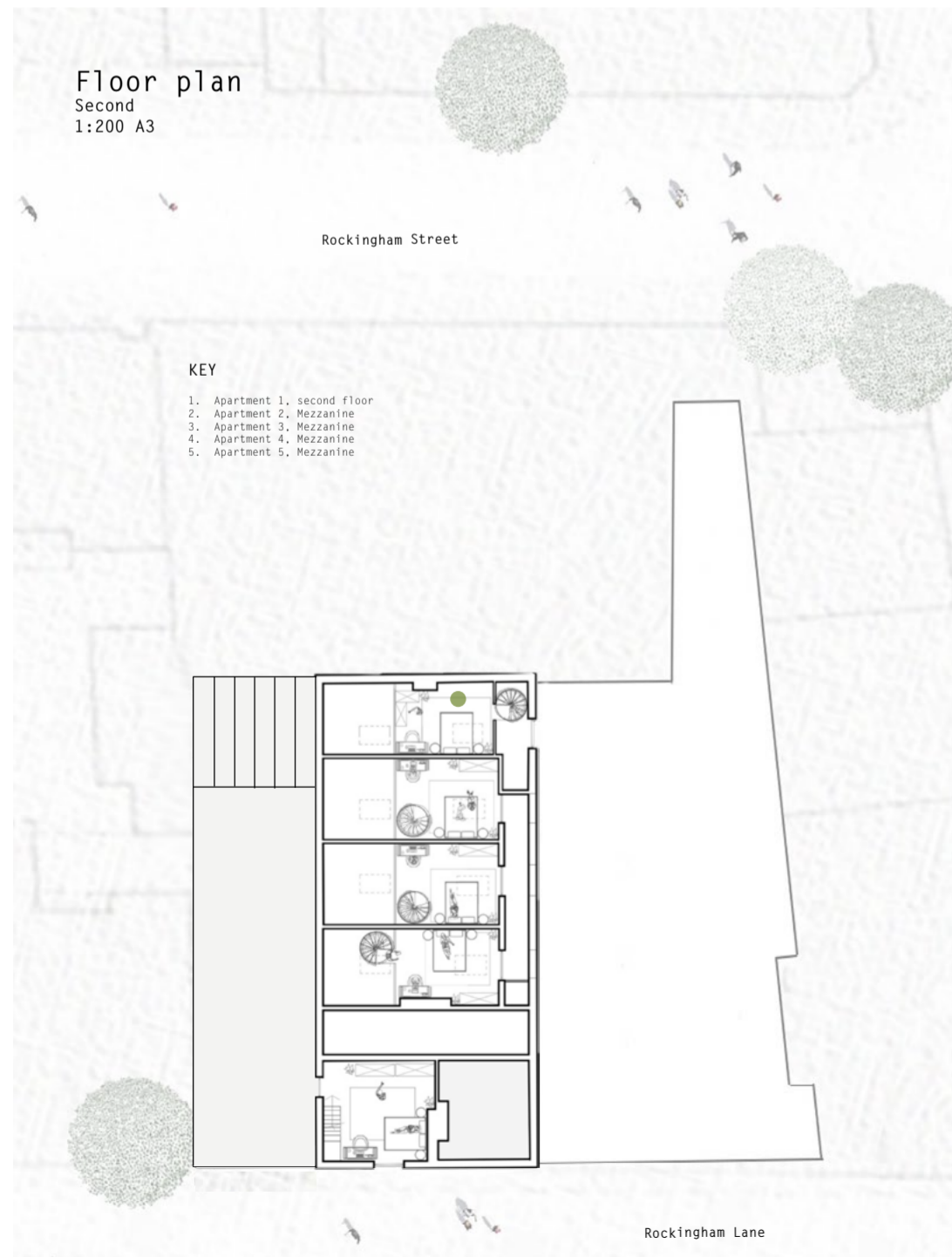


Tectonics
Limestone
Scale 1:50 A3

Creation of the limestone facade produces a natural appearance and is a key detail that is located on throughout all floors on my project.

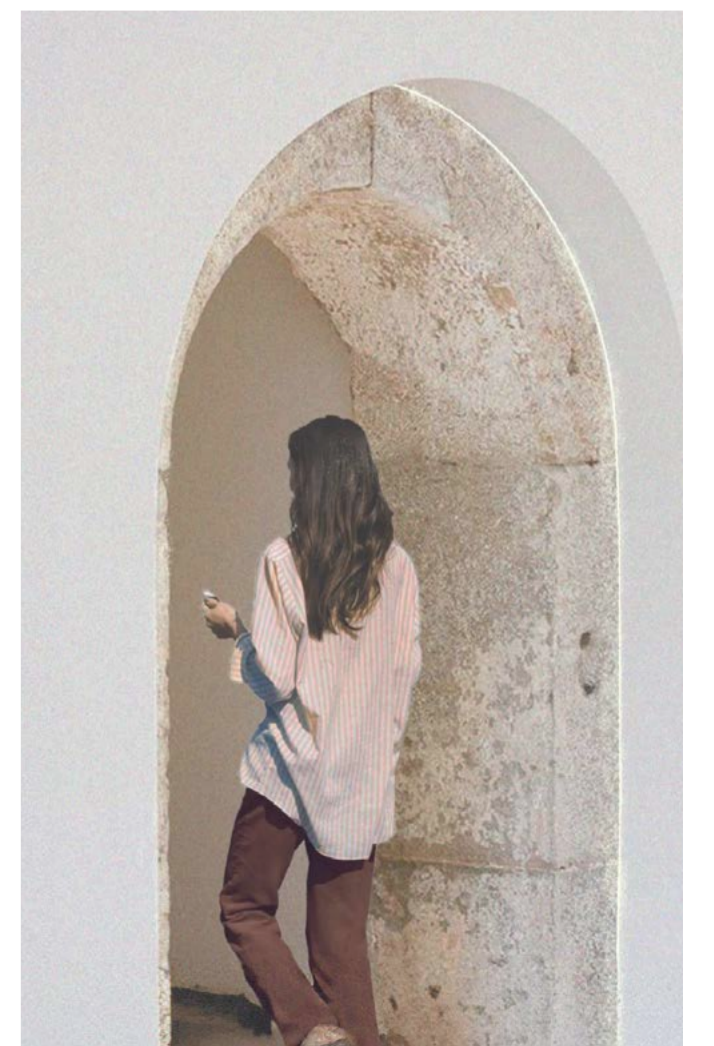
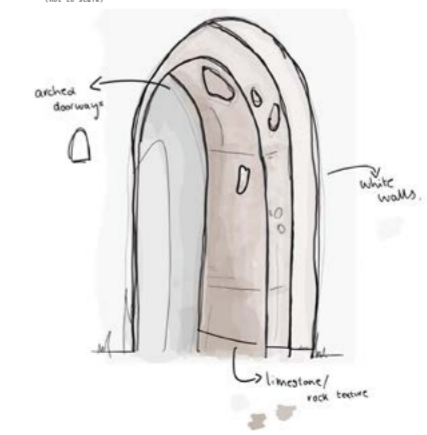


Section drawing of 'limestone' fitting.



Arches

Not only do arched doorways represent the natural curves of a woman's body, rounded corners are psychologically associated with a sense of safety, approachability and 'friendliness'. Altering small details such as door frames can create a big impact on the space overall's ambience.





We are perfect exactly the way we are.

Thank you

