



CHARLIE DANIEL
November House



OBJECTIVES

Tackling loneliness can be a complex and sensitive issue. To address this matter the project has been broken down into three primary objectives: enabling residents to flourish in their independence, nurturing a sense of belonging within a tight-knit support system, and facilitating integration with the wider community.



*Summer is gone, but summer days return,
 The winds and frosts have stripped the woodlands bare,
 Save for some clinging foliage here and there;
 Then as if, pitiful, her heart did yearn,
 Nature, the loving mother, lifts her arm
 And pours the stream of life to her spent child:
 The desert air grows strangely soft and mild,
 And in his veins the long-fled ardors burn.*

*So, when we pass the mid-years of our lives,
 And, sad or glad, we feel our work might done,
 There come to us with sudden, swift returns,
 The glow, the thrill, which show that youth survives,
 That—though through softening mists—still shines the sun,
 And in our souls the Indian summer burns.*

'November' by Samuel Longfellow

November House aims to address the loneliness crisis, prevalent with older adults in the UK. Located in the heart of Sheffield, this community-focused residence offers people the opportunity to maintain their independence while fostering a sense of belonging within a close-knit community of alike individuals. The project seeks to create a characterful living environment that promotes social interaction, emotional well-being and a strong connection to the wider community.

November House strives to create a supportive environment that celebrates the beauty of aging and aims to combat loneliness through meaningful interactions and communal activities. The design should prioritize residents' independence and autonomy, offering functional and accessible living spaces that cater to their individual needs and preferences. The design aims to cultivate a sense of community and belonging among residents, encouraging collaboration, mutual support, and a shared sense of purpose. November House should integrate seamlessly with the surrounding urban fabric, enabling residents to feel connected to the wider community and access local amenities and services easily. With the residents at the heart of this project, a sensitive and thoughtful design approach must be taken to successfully intertwine private and communal spaces, ensuring a harmonious living environment that truly feels like home.

CONCEPT



WAYS OF LIVING

In contrast to the often lifeless and clinical atmosphere of some retirement facilities, November House aims to exude character and charm, offering residents a place they would be excited to call home.

With the aim of creating an environment reminiscent of home for every resident, a flexible approach to the design of the apartments must be considered. Just as each of the residents will have very different possessions, they will each also be accustomed to their individual way of life. It is therefore important to recognise this factor and design the apartments accordingly.

With this in mind, my approach to the design is to craft a customisable living space, that can deliver multiple configurations to suit different residents and their ways of living. This approach fosters a sense of ownership and belonging, encouraging residents to feel truly at home in their surroundings.

PRECEDENT



IBIHAVEN

Ibihaven, a collaborative co-living project for seniors in Skaggle, Denmark, by Terno and Sangberg, introduces the Agorafavene concept, emphasizing sustainable co-housing centered around shared communal spaces. The innovative design features a grid of cross-laminated timber columns forming a central courtyard, inspired by the Greek agora. The courtyard hosts workshops, exercise areas, and lounges and small gardens, fostering community interaction. The 'zig-zagging' roof of corrugated polycarbonate covers the central hub, connecting ground floor patios and first-floor decks to encourage resident engagement. Access to apartments through the courtyard ensures an active communal area, reinforcing Ibihaven's commitment to a vibrant and inclusive senior living environment with a focus on social connectivity.

Although an entirely covered courtyard may not be appropriate for November House, the strong connection between the indoor and outdoor spaces and the sense of security and community will greatly inspire this project going forward.



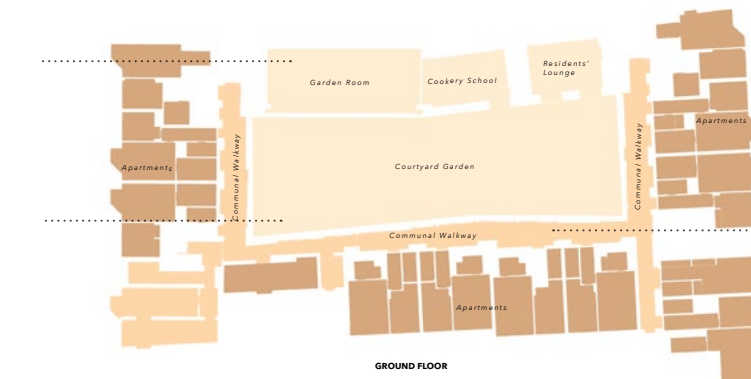
PLANNING



INSPIRATION



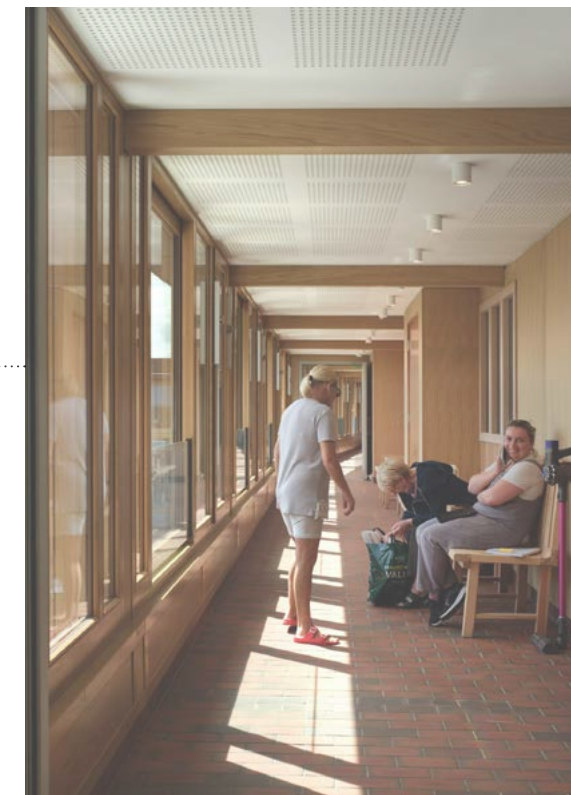
- Private
- Semi-private
- Semi-public



APPLEBY BLUE

Appleyby Blue, a social housing development in Southwark, London, sets 'a new benchmark' for inner-city senior housing. Designed by Witherford Watson Mann, this five-story project revitalises a former care home site, creating 57 new apartments with communal amenities, including a courtyard and garden room. Departing from traditional notions of retreat and seclusion in elderly housing, the design creates an 'active, open, and shared environment' that integrates with the wider community. Central to the design is a courtyard garden, conceived as an 'abstract woodland glade', providing a tranquil setting with a cascading water feature, trees, and flower beds. The courtyard acts as the core of the residential, along with the garden room and lounge which are designed to encourage social interaction and community activities. Wrapped around these social spaces are the individual apartments, providing residents with their independence while still feeling connected to the housing community.

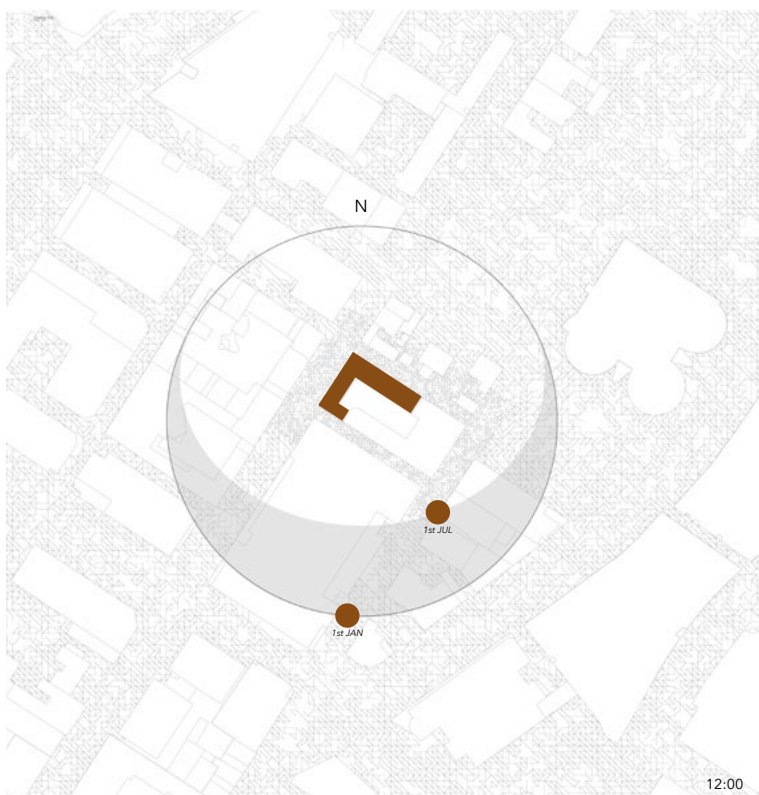
- Private
- Semi-private
- Semi-public



THRESHOLD

Each level of the care home overlooks the central courtyard from a 'street-like paved walkway' off which each apartment is entered. This walkway acts as the boundary between the public space of the communal garden and the privacy of the apartments. The design features an oak-lined interior with sliding glass panels and brick paving. This choice of finishes further highlights the shift from public to private by establishing the transition from outdoors to indoors. As well as providing a space for casual socialising with neighbours, it also gives a shared sense of ownership and security for residents entering their individual apartments.

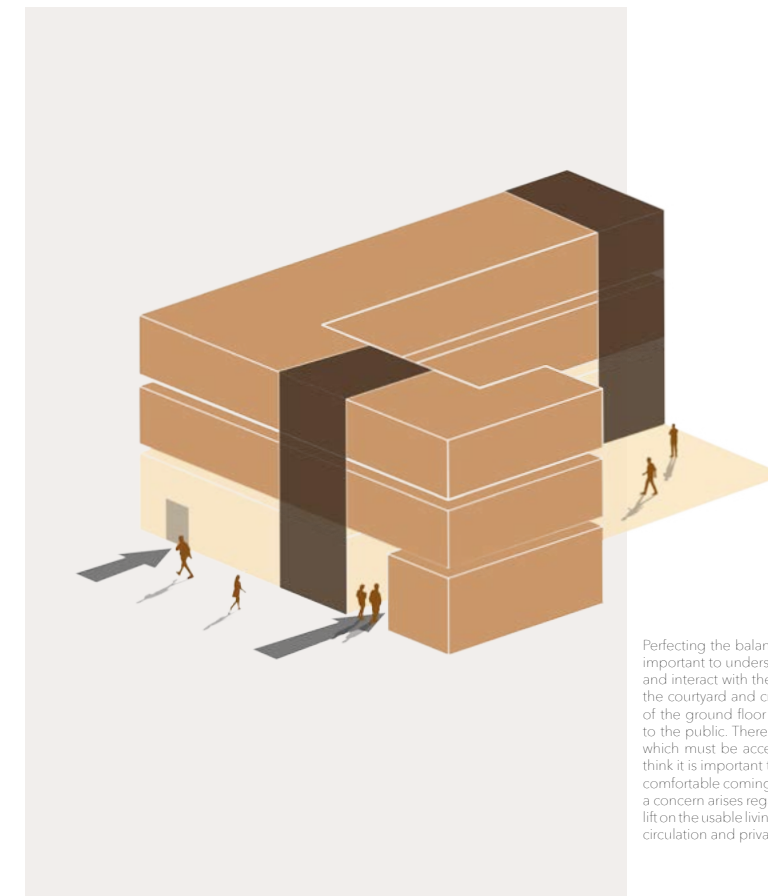
SITE



SITE



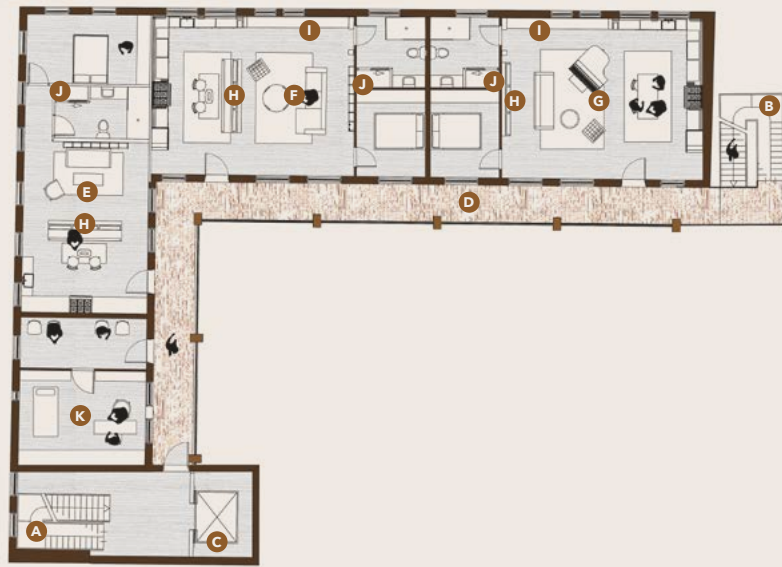
Sheffield's city centre exhibits a noticeable absence of residents over the age of 65, evidently due to several factors. Firstly, most urban development has predominantly focused on commercial and industrial interests, leading to a scarcity of housing options tailored to older adults. Additionally, the bustling nature of the city centre may deter seniors seeking quieter, more accessible environments. However, integrating the over-65 demographic into the city centre presents numerous advantages. Notably, it promotes social inclusion and diversity, fostering a vibrant and interconnected community reflective of all age groups. Furthermore, proximity to amenities, cultural venues, and healthcare facilities enhances convenience and accessibility for older adults, contributing to their overall well-being. By bridging this demographic gap, Sheffield can create a more inclusive and dynamic environment that celebrates the contributions and experiences of all its residents.



EXISTING SPACE

- Private
- Public
- Circulation
- Entry points

Perfecting the balance between public and private spaces is a key part of the brief. It is therefore important to understand the current privacy levels of the building and how people move through and interact with these spaces. A public cafe is located on the ground floor, extending out to the courtyard and creating a very open and inviting space that welcomes people in. A small part of the ground floor and the two upper floors house private office spaces that are not accessible to the public. There are two main stairwells in the building that allow access to all floors, both of which must be accessed through the public spaces. When considering my residential design, I think it is important to have a main circulation route that is private, where residents feel secure and comfortable coming to and from their apartments. Similarly, in the building's current configuration, a concern arises regarding the potential encroachment of space needed for corridors, stairs, and a lift on the usable living areas. Evidently, a thoughtful approach to the organisation of space regarding circulation and privacy is key to creating a successful design.



FIRST FLOOR 1:100

- A Internal stair
- B External stair
- C lift
- D Covered walkway
- E Apartment 1
- F Apartment 2
- G Apartment 3
- H Movable partition wall
- I Storage bench
- J Laundry cupboard
- K Multi-purpose treatment room



ROOF TERRACE 1:100

- A Internal stair
- B External stair
- C lift
- D Walkway
- E Pergola
- F Resident allotments
- G Benches
- H Tool shed



GROUND FLOOR 1:100

- A Entrance
- B Secure entrance
- C Post boxes
- D Internal stair
- E External stair
- F Lift
- G Community living
- H Storage bench seat
- I Display unit
- J Community Dining
- K Community kitchen
- L W/C
- M Pantry
- N Pivot dividers
- O Multi-purpose activity space
- P Activity storage
- Q Fire exit
- R Sliding glazed doors
- S Covered outdoor space
- T Courtyard

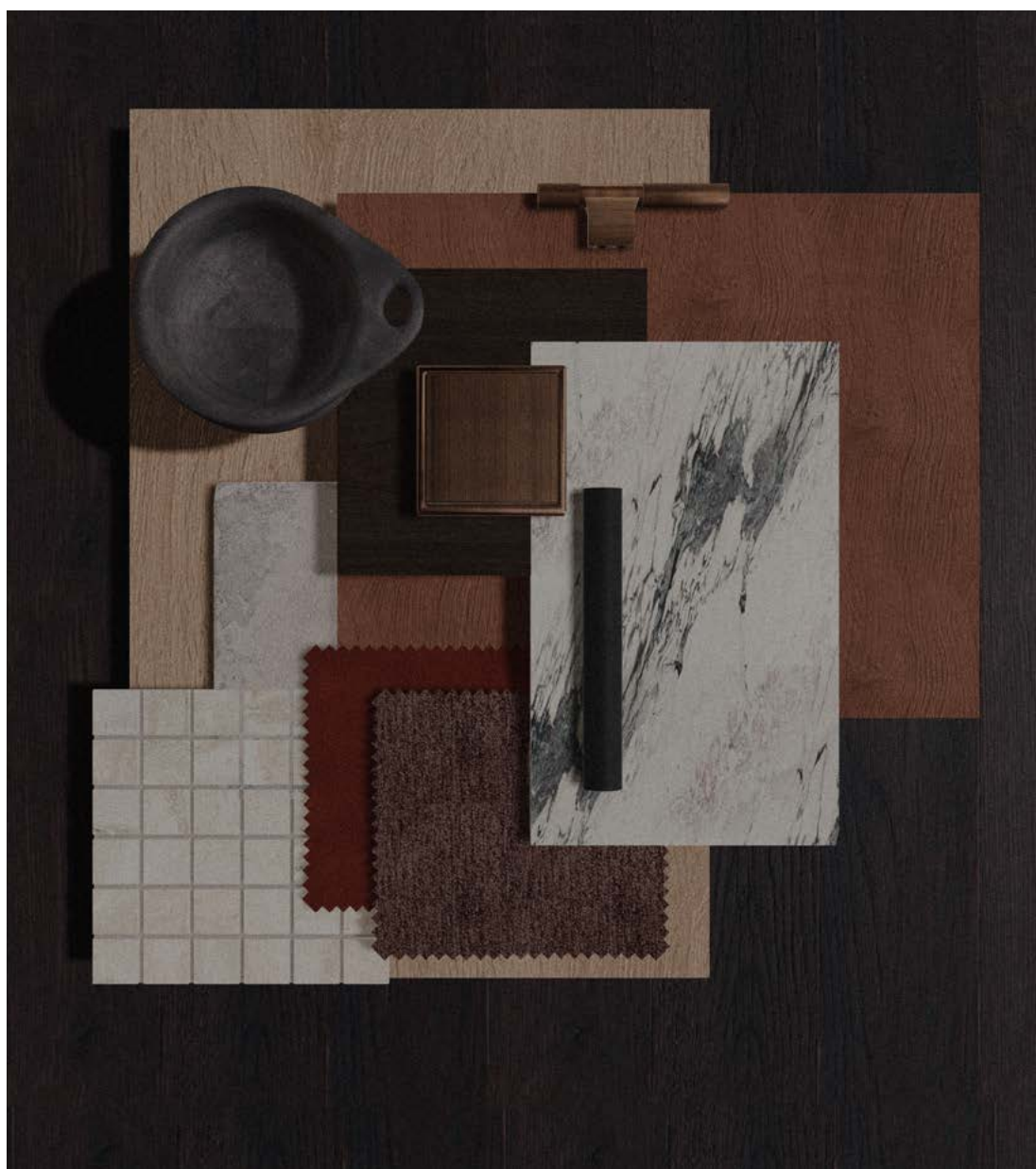


SECOND FLOOR 1:100

- A Internal stair
- B External stair
- C lift
- D Covered walkway
- E Apartment 4
- F Apartment 5
- G Apartment 6
- H Movable partition wall
- I Storage bench
- J Laundry cupboard
- K Spare room for residents' guests
- L Shared storage



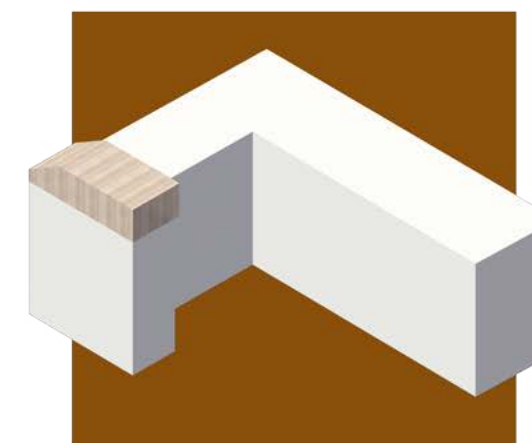
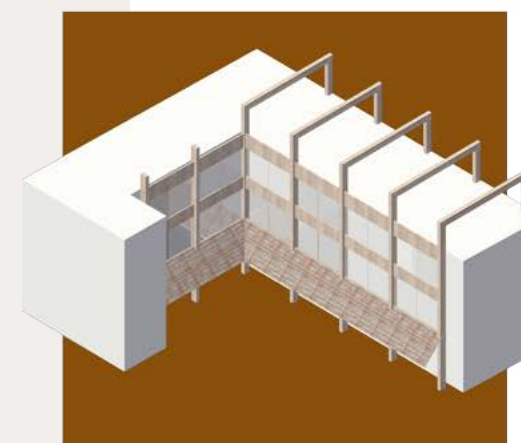
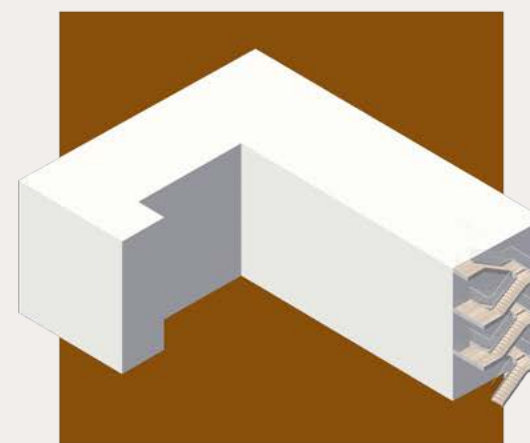
REAR ELEVATION 1:50



MATERIALITY

Part of the project's brief involves crafting characterful living spaces, inviting residents to seamlessly transition into their new home with a sense of ease and belonging. To accomplish this, my approach revolves around the introduction of warm colours and rich textures. Through a mix of different wood tones and earthy stone textures, the design aims to evoke feelings of warmth and comfort. Paired with subtle black and brass accents, I hope to strike the balance of a more timeless aesthetic with some contemporary flare.

The deliberate use of warm hues and tactile materials is intended to envelop residents in a cocoon of familiarity and cosiness, fostering a sense of home that extends beyond mere physical space.

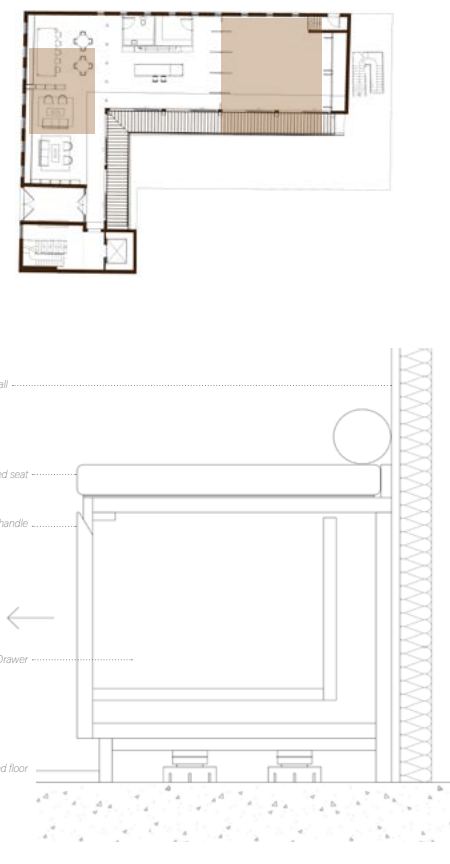
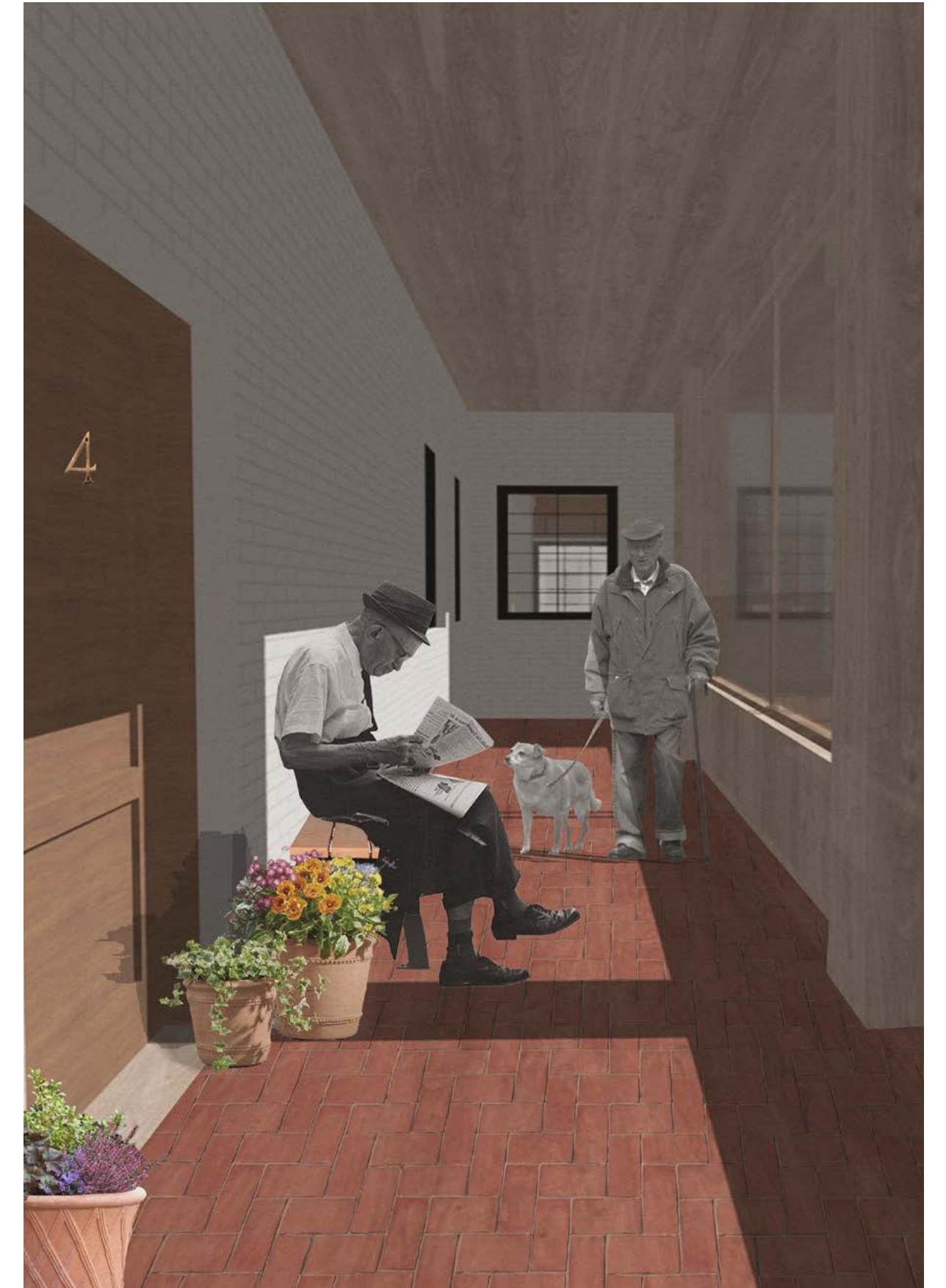


STRATEGY

Circulation is a fundamental aspect to this design. Some of the key design moves that I made were external additions to the original building. The largest of which is the timber structure that forms the walkways to the apartments. By placing this main circulation route on the exterior of the existing building, the usable interior space can be maximised. Another key decision that I made was to place the allotment on the roof, which benefits from more sunlight than the central courtyard. This meant that the roof had to be accessible and safe, with a main staircase, fire escape and lift. With the main staircase and lift inside the building, I have had to raise part of the roof to allow for the additional ceiling height. Both the internal and external staircases, access the roof allotment via the walkway created from the main timber structure.



CONFIGURATION 2

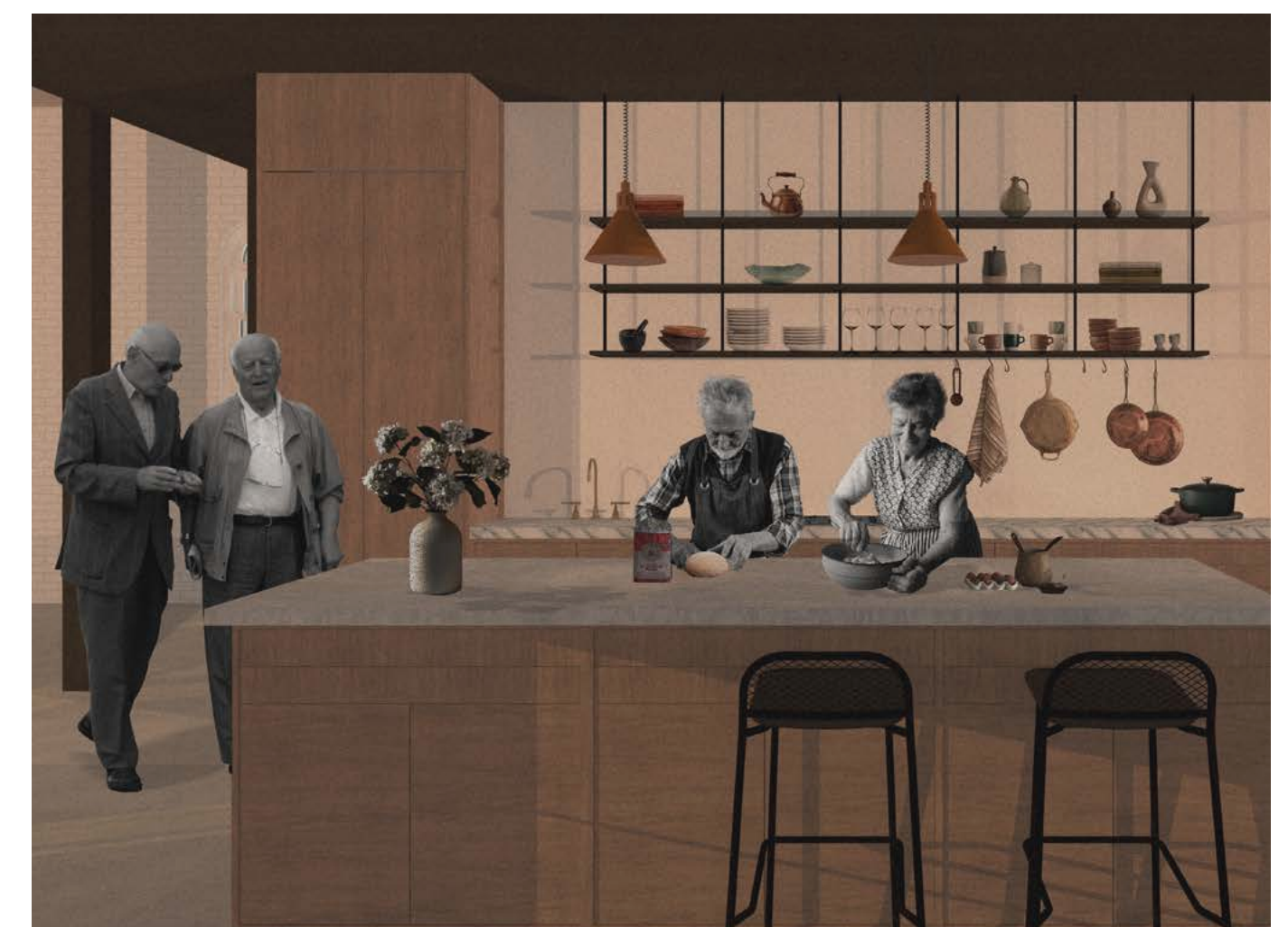


DETAILING OF STORAGE BENCH 1:2

COMMUNITY

With 1.4 million lonely older adults in the UK, November House aims to extend its impact beyond its residents. Through a partnership with Age UK, the goal is to establish November House as the charity's 'hub' in Sheffield, organizing activities and social events to unite individuals from the broader community. Therefore, the proposed ground floor is dedicated to community and socialising. An open plan layout allows people to feel comfortable in the space and encourages interactions. The use of lowered ceilings and subtle dividers, such as open shelving and pillars, softly zone different areas to clearly establish purpose and promote relaxation. The living and dining areas are connected with an upholstered storage bench that runs the width of the building, creating extra seating and storage. The multi-purpose activity space can be sectioned off with large timber pivot doors that when closed, seamlessly create a flush wall. Large glazed sliding doors create a strong connection to the outdoors and the continued floor finish makes the central courtyard feel part of the ground floor space.

With a regular timetable of events and activities, residents and guests will have ample opportunities to engage with one another, foster meaningful connections, and enrich their social lives. The concept of this community-focused residence can be duplicated nationwide, establishing "hubs" in various cities across the country, uniting people and putting an end to loneliness.





SECTION A 1:50

