

**COMMUNITY**



In addition to the cafe, supermarket and juice bar - which are all open to the public - Toybox will have a dedicated space for the community. An events space will hold a range of talks and workshops - free for anyone to attend. This also gives local people the opportunity to share their life skills, passions and advice to the other residents of Sheffield.

**COMMERCIAL**

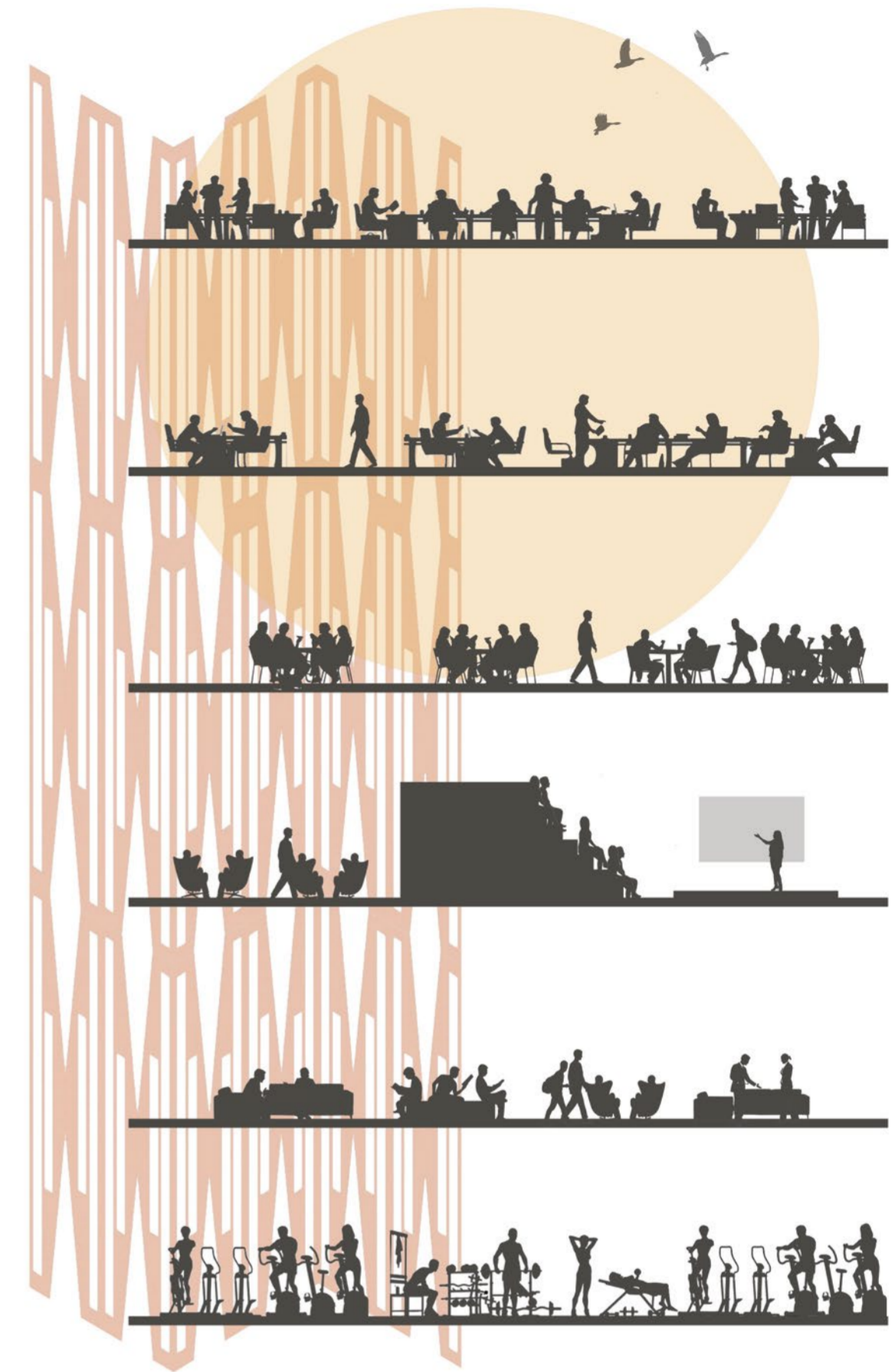


Toybox will work on a membership basis of £20 a month. This affordable membership allows access to all co-working spaces, bookable meeting rooms and the gym with allocated personal trainer on joining. Additional revenue is made from the cafe, juice bar and supermarket - all of which provide jobs for local residents. In addition to these, there are also job opportunities for receptionists, personal trainers and cleaners.

**SUSTAINABILITY**



In order to make the building as sustainable as possible, it will run mostly off solar energy from solar panels on the roof. Furthermore, Toybox can eliminate the need for small businesses to rent/buy their own office space. This will therefore free up more real estate and reduce the demand for new offices to be built in the city.



CONCEPT IMAGE

PROPOSAL



PROPOSAL



SITE



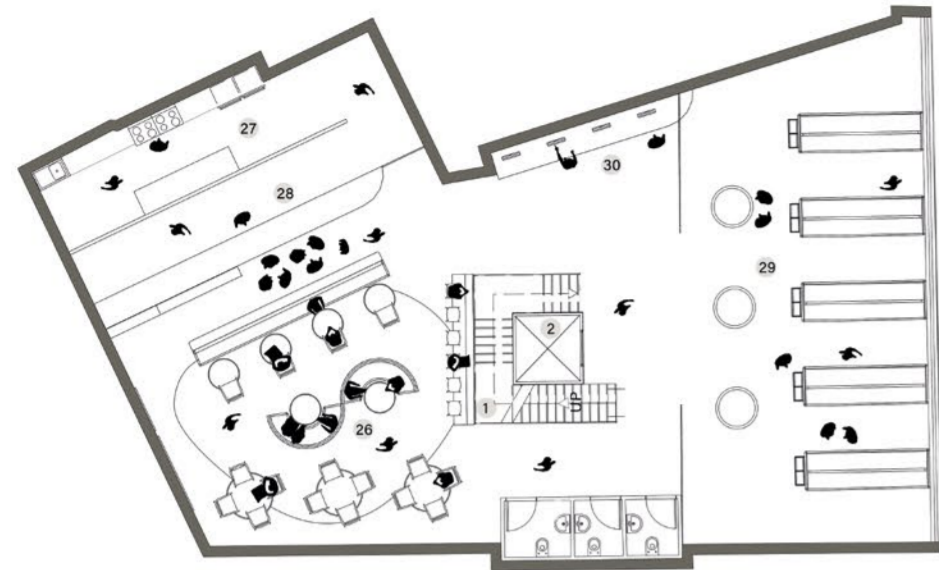
SITE



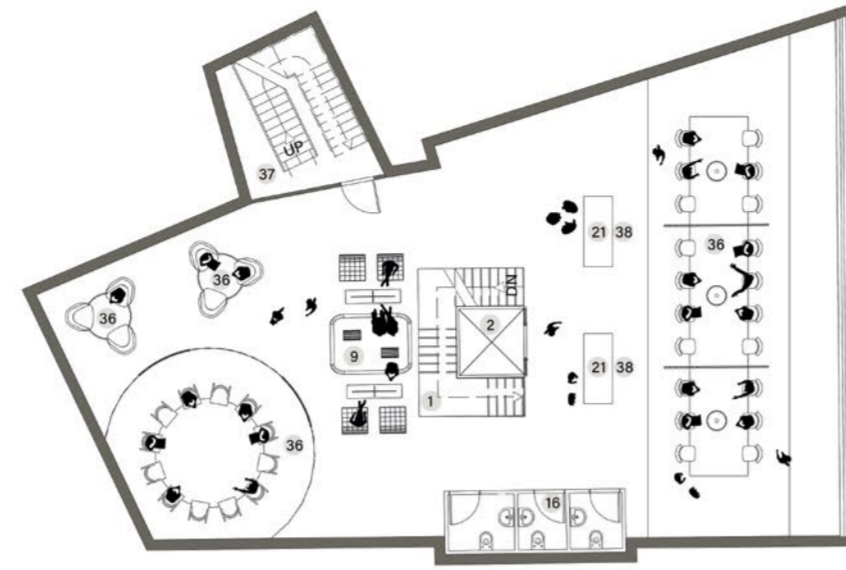
PROPOSAL

Toybox will offer collaborative and relaxed working spaces aimed at home/hybrid workers and students. The building will offer flexible working environments from private pods, to meeting rooms and casual working spaces. With the users at the centre of the design, Toybox aims to provide more than just 'a day at the office'. With a cafe, gym and supermarket, members will have access to everything they need to make valuable use of precious time. Also acting as a community hub, there is a dedicated space for workshops and events, aimed at bringing people together and offering education and culture to the people of Sheffield.

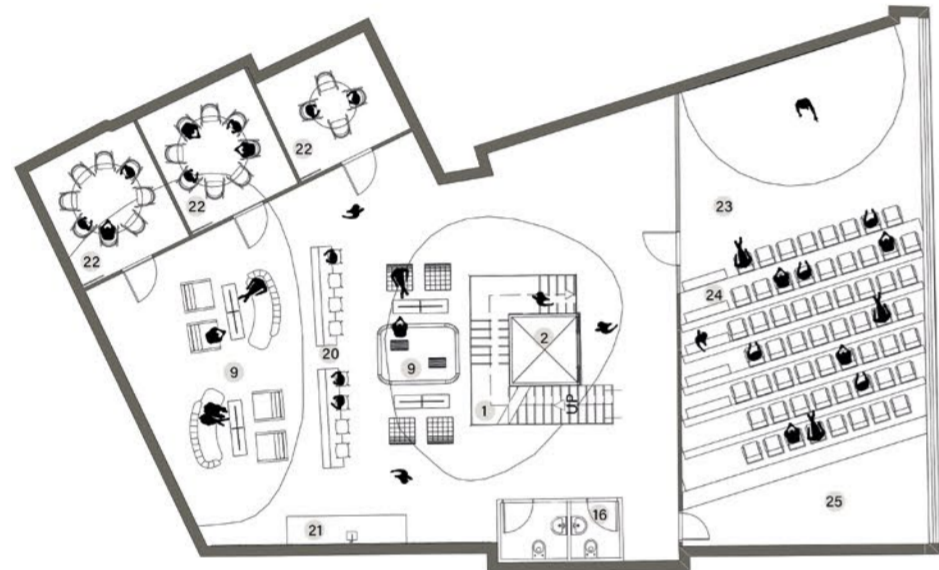
This design concept focuses on encouraging people to travel back into the city centre. Toybox will become a home from home for workers across Sheffield and will act as a cultural hub for groups and communities across the city.



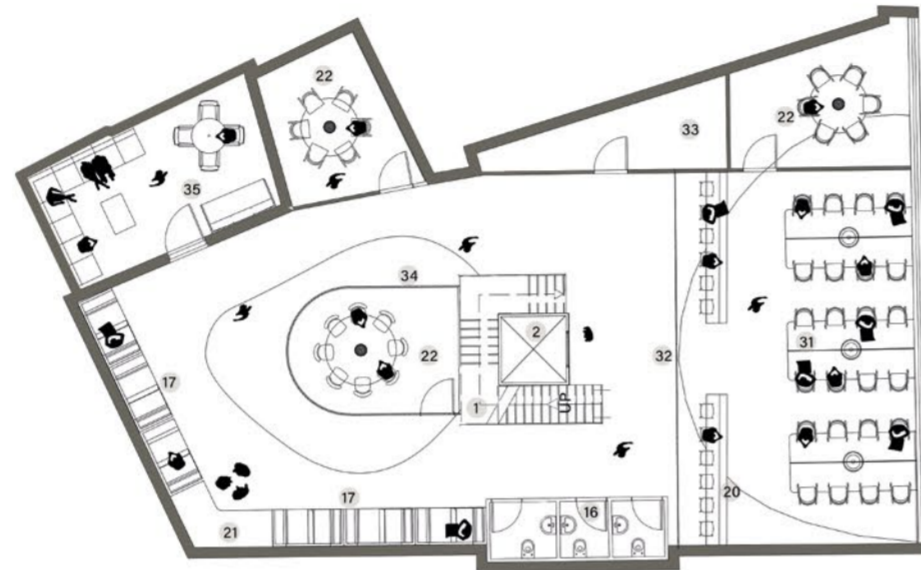
SECOND FLOOR



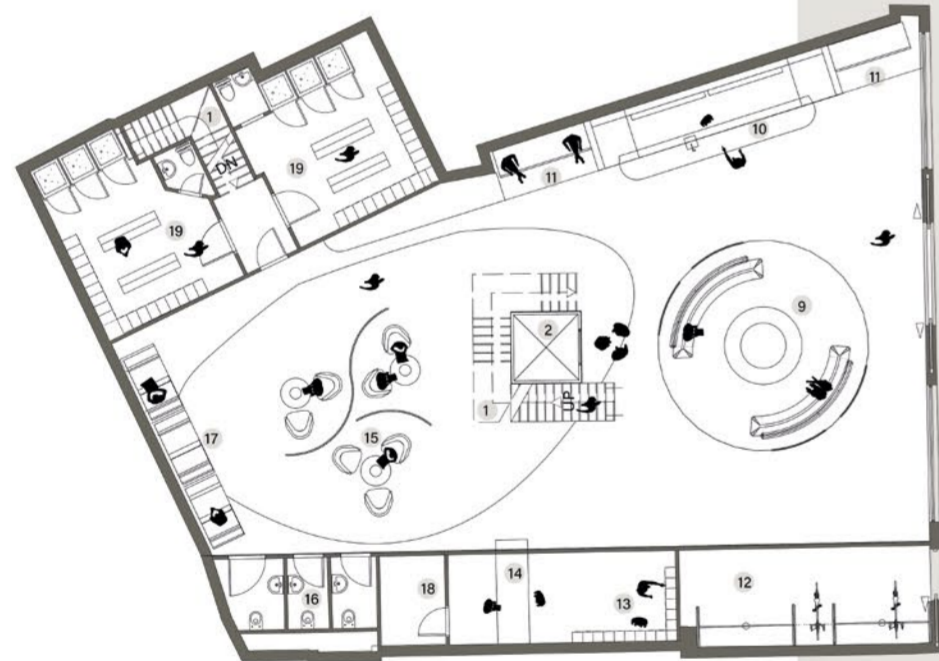
FOURTH FLOOR



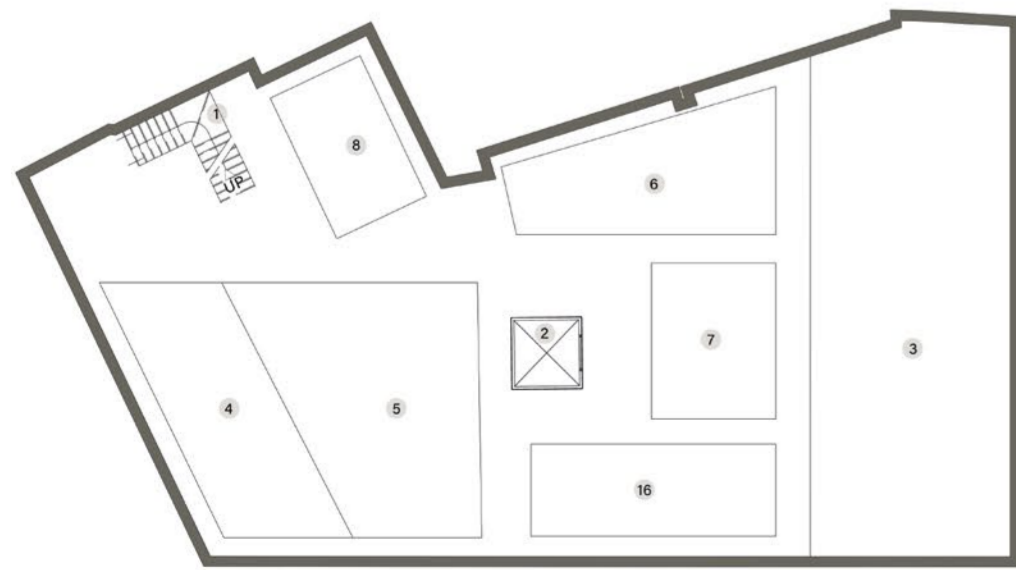
FIRST FLOOR



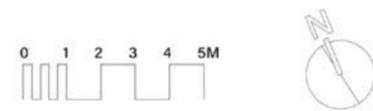
THIRD FLOOR



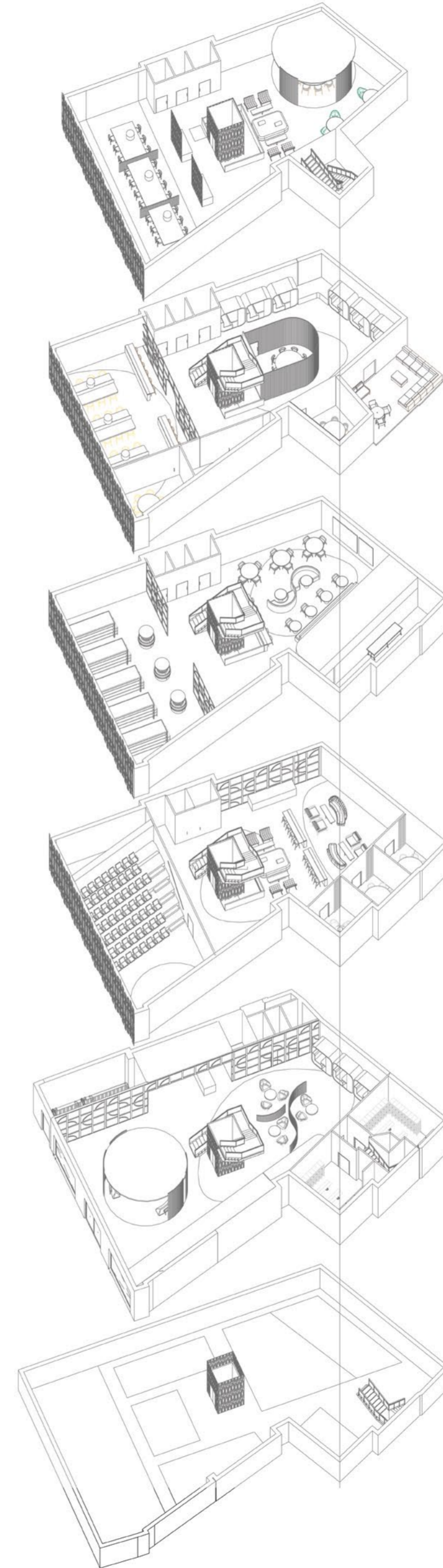
GROUND FLOOR



BASEMENT



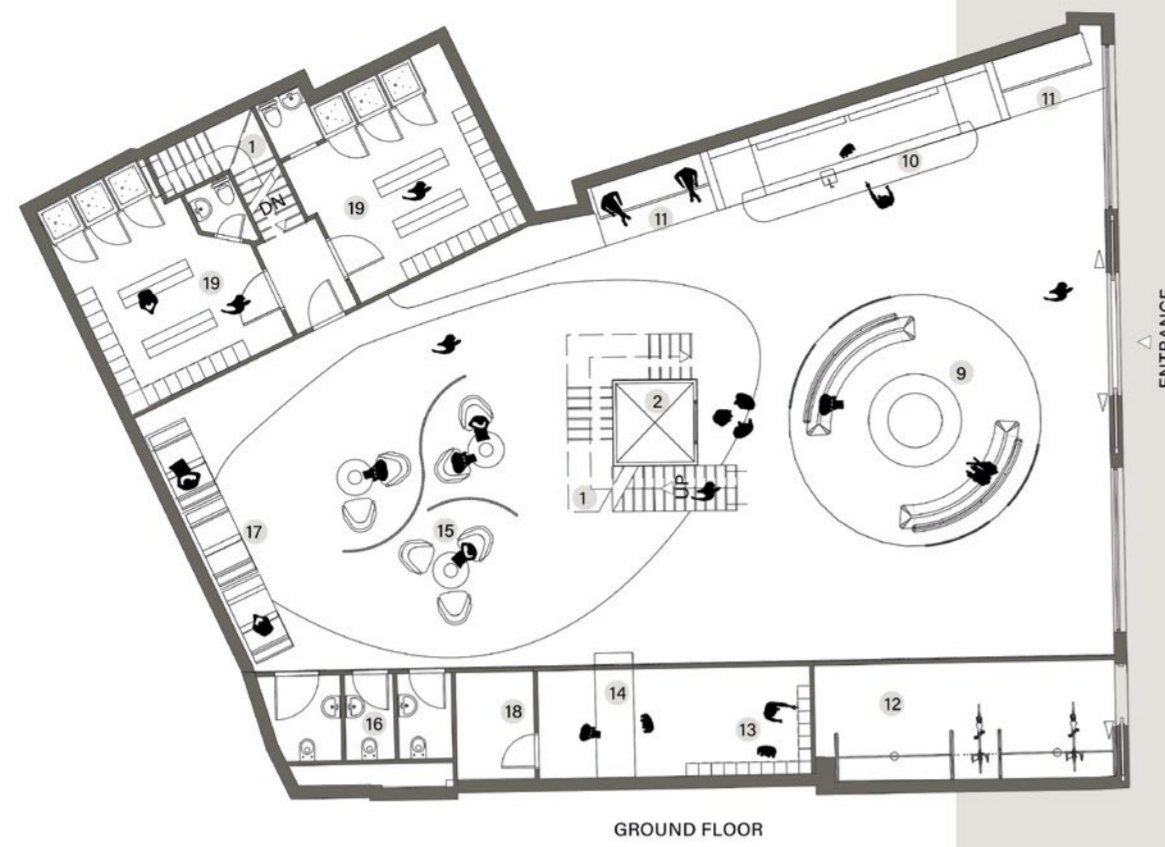
- BASEMENT GYM**
- 1 STAIRS
- 2 LIFT
- 3 CARDIO EQUIPMENT
- 4 STRENGTH TRAINING
- 5 CIRCUIT TRAINING
- 6 EXERCISE MATS
- 7 DRINKS STATION
- 8 SEATING AREA
  
- GROUND FLOOR RECEPTION**
- 9 RELAXED SEATING AREA
- 10 JUICE BAR
- 11 SEATING ALCOVE
- 12 BIKE STORE
- 13 MEMBERS POSTAL LOCKERS
- 14 RECEPTION DESK
- 15 RELAXED WORKING SPACE
- 16 WC
- 17 PRIVATE WORKING PODS
- 18 STAFF STORE ROOM
- 19 GYM CHANGING ROOMS
  
- FIRST FLOOR COMMUNITY**
- 20 HIGH STOOL SEATING
- 21 TEA AND COFFEE STATION
- 22 MEETING ROOM
- 23 WORKSHOP / EVENT SPACE
- 24 BLEACHER SEATING
- 25 CLEANING / STORAGE
  
- SECOND FLOOR FOOD & DRINK**
- 26 CAFE SEATING
- 27 KITCHEN
- 28 SERVICE AREA
- 29 SUPERMARKET
- 30 SELF CHECKOUT
  
- THIRD FLOOR CO-WORKING**
- 31 QUIET WORKING DESKS
- 32 TIMBER DIVIDER
- 33 COMMS ROOM
- 34 FLUTED GLASS WALL
- 35 OUTDOOR SEATING
  
- FOURTH FLOOR CO-WORKING**
- 36 COLLABORATIVE WORKING
- 37 STAIRS ACCESS TO ROOF
- 38 COPPER SCREEN



EXPLODED VIEW

FLOOR PLANS

# PROPOSAL

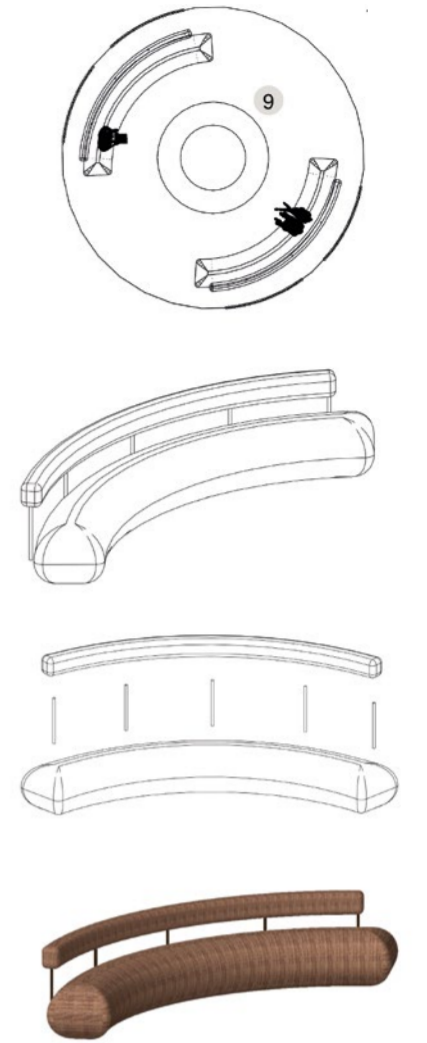


GROUND FLOOR

## GROUND FLOOR

Upon entering the ground floor, users are greeted with a relaxed seating area that is zoned with a lowered ceiling and a change in flooring. This can act as an informal meeting point for friends and co-workers. There is also a separate entrance which gives access to the bike store, encouraging people to cycle into the city. A lowered ceiling has also been used to zone the reception area, which houses an information desk and postal lockers for members. Behind the central staircase, is a small working area, screened with curved fluted glass for privacy. The changing rooms are also located on the ground floor, along with the stairs down to the gym, alleviating the need to re-enter the lobby to access the basement.

- 1 STAIRS
- 2 LIFT
- 9 RELAXED SEATING AREA
- 10 JUICE BAR
- 11 SEATING ALCOVE
- 12 BIKE STORE
- 13 MEMBERS POSTAL LOCKERS
- 14 RECEPTION DESK
- 15 RELAXED WORKING SPACE
- 16 WC
- 17 PRIVATE WORKING PODS
- 18 STAFF STORE ROOM
- 19 GYM CHANGING ROOMS



# PROPOSAL



FIRST FLOOR

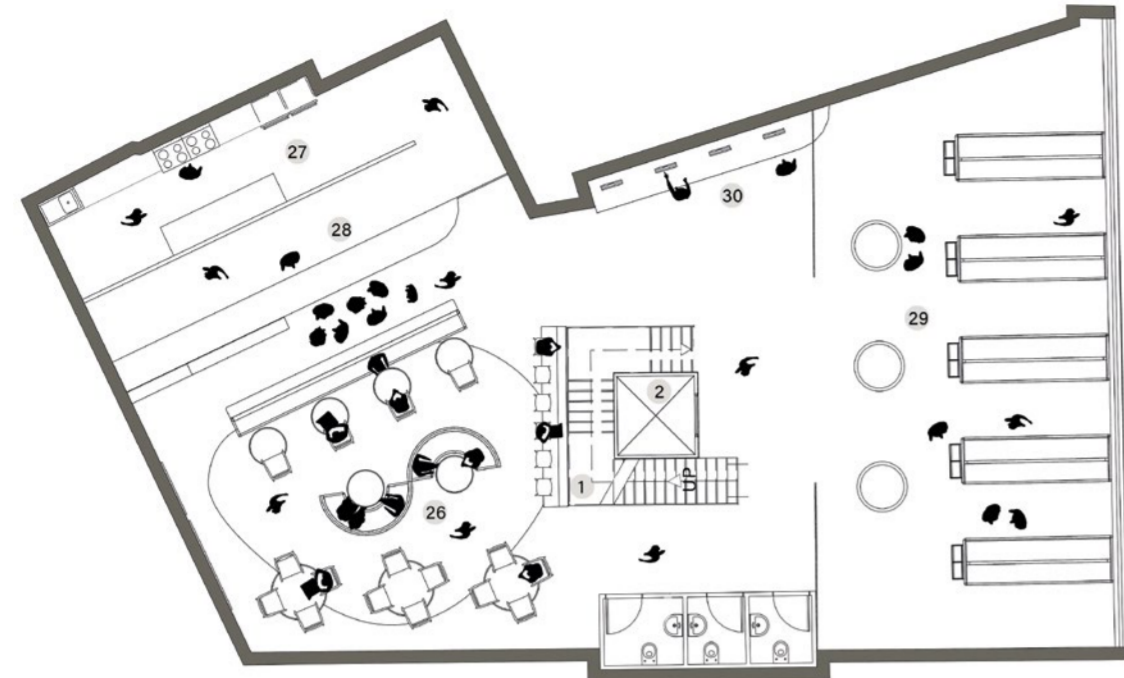
## FIRST FLOOR

The first floor is dedicated to the community. Located at the front of the building, the events space has a large stage and tiered bleacher seating. Situated next to the window, this space will be flooded with natural light and will have interesting shadows cast by the exterior copper cladding. On this floor, there is also some informal seating and a tea and coffee station that create a relaxed environment that can be used when waiting for events to start. Additionally, there are 3 meeting rooms that members can book out with their coworkers, with curtains inside that can be drawn for added privacy.

- 1 STAIRS
- 2 LIFT
- 9 RELAXED SEATING AREA
- 16 WC
- 20 HIGH STOOL SEATING
- 21 TEA AND COFFEE STATION
- 22 MEETING ROOM
- 23 WORKSHOP / EVENT SPACE
- 24 BLEACHER SEATING
- 25 CLEANING / STORAGE



# PROPOSAL

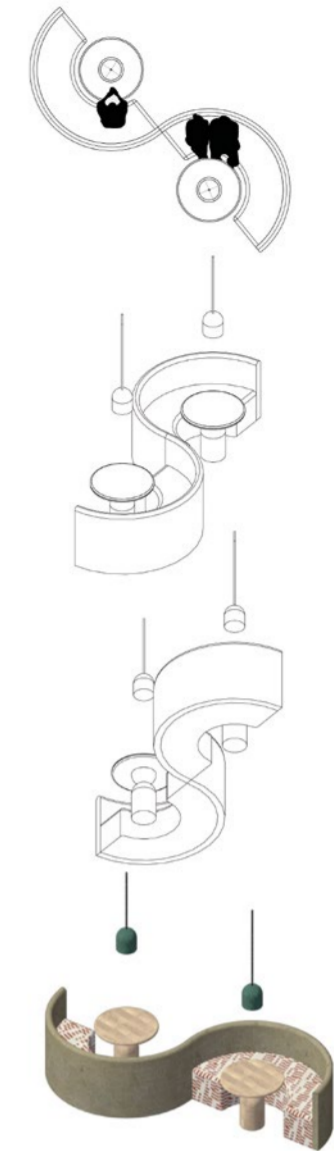


SECOND FLOOR

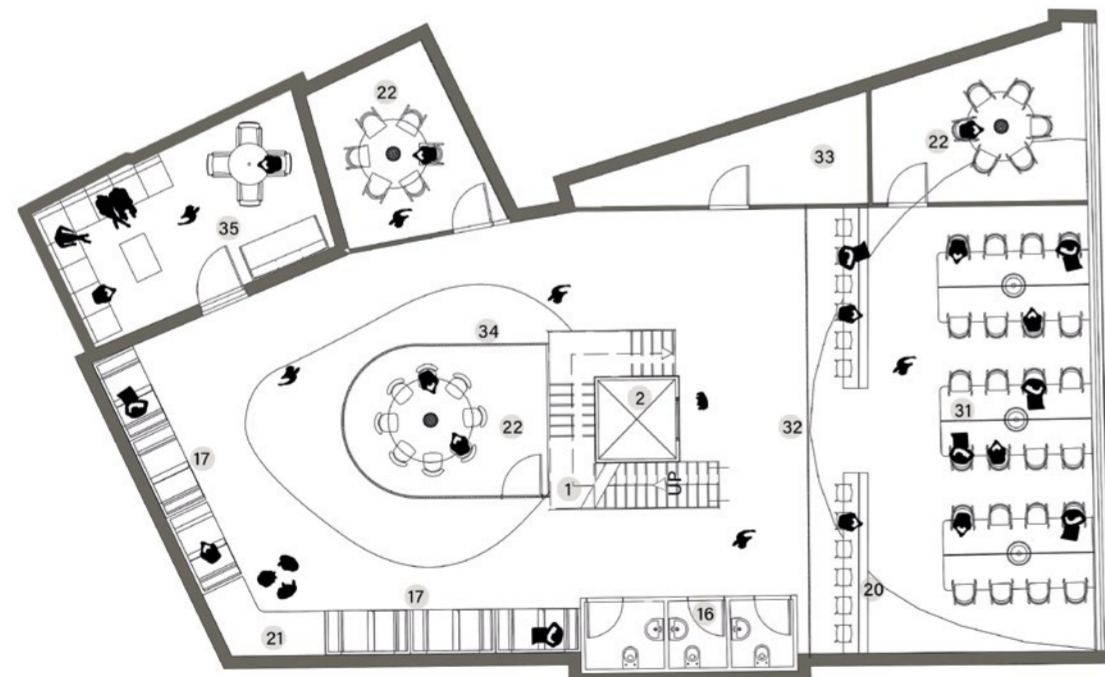
## SECOND FLOOR

The second floor holds the cafe and supermarket. The lift opens to the supermarket which is partly screened using stained timber dividers from either wall. Behind the staircase is the cafe which serves hot food and drink to both members and the local community. The materiality of this space is a continuation of the ground floor with the dark stained timber, mixed fabrics and poured concrete counter. There is also a lowered ceiling, that zones the seating area, with green ceramic pendant lights hanging over the tables. This space is meant to feel warm and relaxed - creating the perfect place for a work break.

- 1 STAIRS
- 2 LIFT
- 16 WC
- 25 CAFE SEATING
- 27 KITCHEN
- 28 SERVICE AREA
- 29 SUPERMARKET
- 30 SELF CHECKOUT



# PROPOSAL



THIRD FLOOR

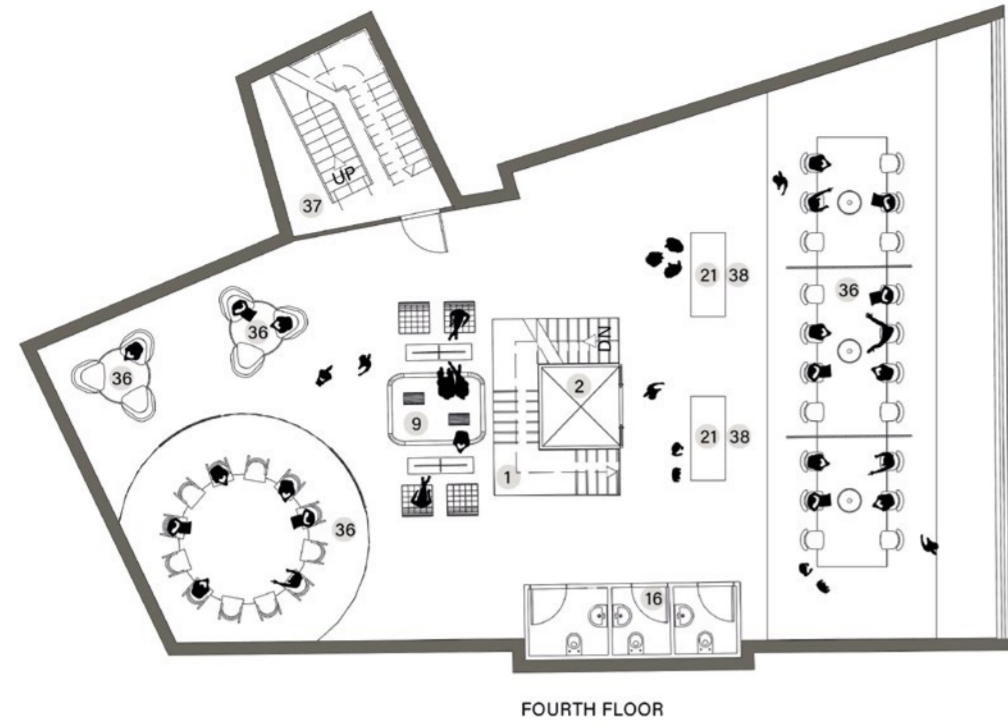
## THIRD FLOOR

The third floor is the first of two dedicated working spaces exclusively for members. This floor is designed more for quiet working as opposed to collaborative discussions. On exiting the lift, there is a large timber frame screening a more 'traditional' working space. This area consists of three large bespoke desks with central privacy screens, suggesting more of an individual working environment. There is also some high stool seating that faces the window, giving light and views for the users. Towards the rear of the third floor, there is a number of private working pods that give individuals the opportunity for a personal working space, with a tea and coffee station in the corner. Additionally, there are three meeting rooms - one of which is enclosed within a fluted glass wall, furnished with a terrazzo table. Finally, there is access to a small outdoor space, with a large corner sofa and table. This is a great space to take a quick break or catchup with co-workers.

- 1 STAIRS
- 2 LIFT
- 16 WC
- 20 HIGH STOOL SEATING
- 21 TEA AND COFFEE STATION
- 22 MEETING ROOM
- 31 QUIET WORKING DESKS
- 32 TIMBER DIVIDER
- 33 COMMS ROOM
- 34 FLUTED GLASS WALL
- 35 OUTDOOR SEATING



PROPOSAL



FOURTH FLOOR

FOURTH FLOOR

The fourth floor is the second co-working space exclusively for members. This floor is designed for group working and encourages discussion and collaboration. Positioned by the window is a large bespoke table, divided into three zones for different groups/workers to use. This area is zoned with a carpet strip that runs around the walls and ceiling and two copper screens with a drinks station behind each of them. Behind the staircase is some relaxed seating and some smaller tables for more intimate group meetings. Finally there is a large round table with a lowered ceiling, creating the perfect space for bigger team meetings and discussions.

- 1 STAIRS
- 2 LIFT
- 9 RELAXED SEATING AREA
- 16 WC
- 21 TEA AND COFFEE STATION
- 36 COLLABORATIVE WORKING
- 37 STAIRS ACCESS TO ROOF
- 38 COPPER SCREEN



PROPOSAL

