

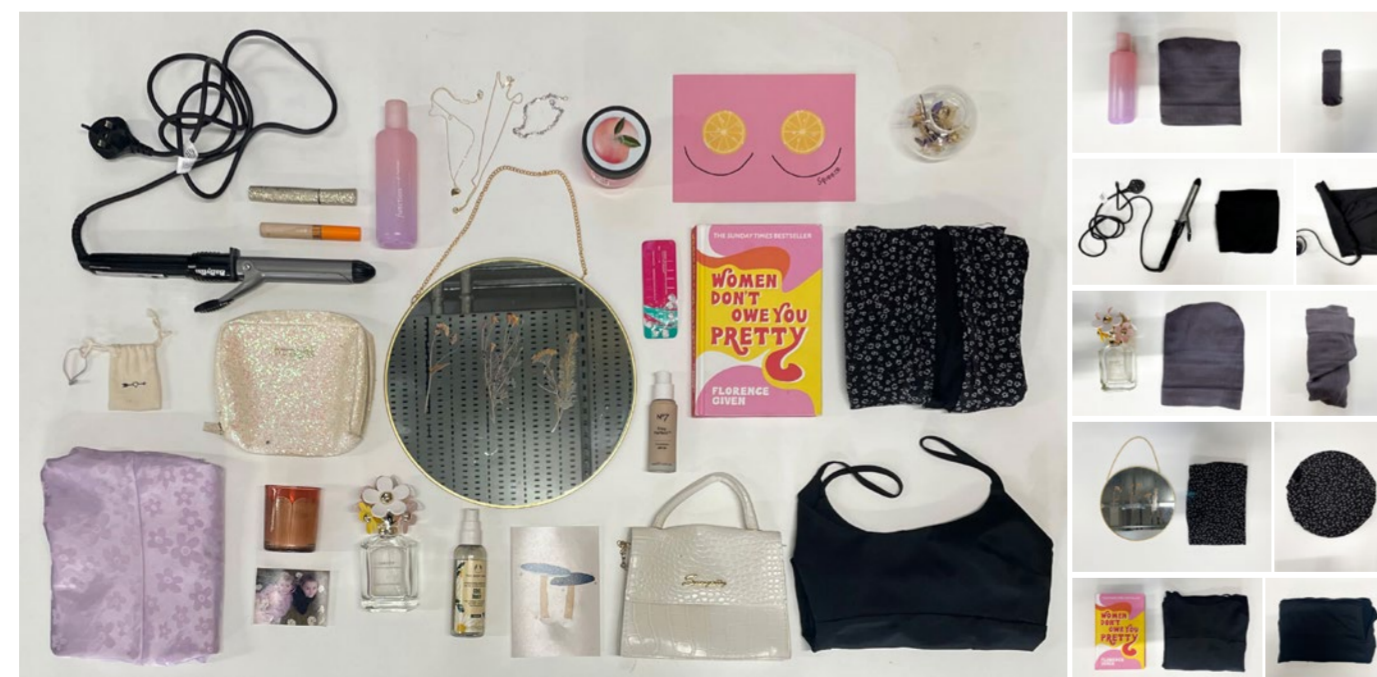


# BODY POSITIVE

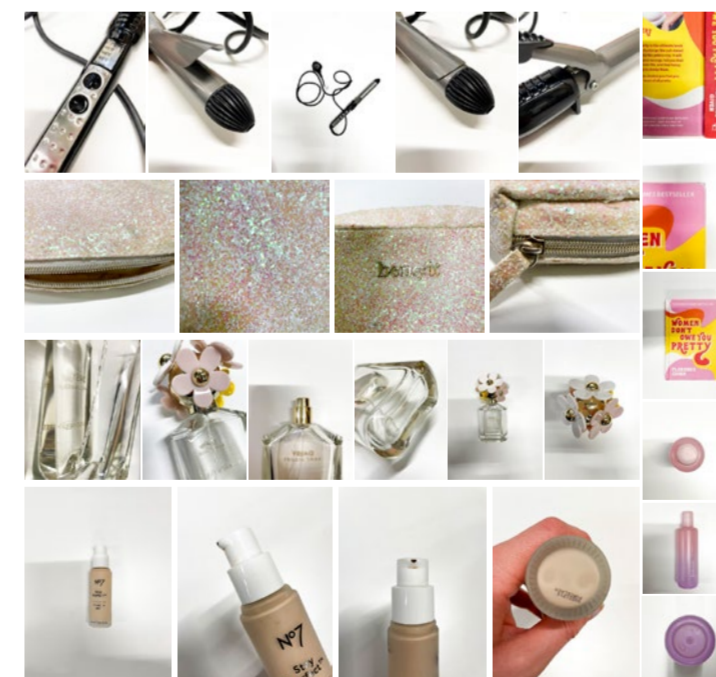
A celebration of the diversity of the feminine form

To start this project off, I began thinking about the female form. I had some of my friends come in to model for a photoshoot, I wanted to create a natural and comfortable sense- how beautiful each part of the female form. The shoot exceeded my expectations and from it opened up possibilities on how I can go forward with this project; the contrast between the exterior of the existing building and the 'exterior' of a female body opened a conversation on the direction of celebrating and embracing femininity in all its forms.

## My Perspective of Femininity



Following on from the photoshoot, I started to explore what femininity means to me so I defined that through things I owned that defined feminine, to me. The idea to use my clothes to wrap more of the solid objects with began to move the project along, there is no feminine without masculine so instead of trying to discard the masculine, rethinking masculinity and using the idea that anything can be feminine. With this I aim to cover the masculine structures and objects with feminine materials and fabrics.



## Inspiration

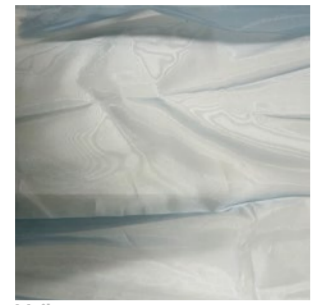


Andres Reisinger's Take Over (top images) uses the combination of reality and digital artwork to create the covering of buildings with pink drapes. Christo and Jeanne-Claude do a similar concept using reality alone to drape fabric over façades, in this instant, they use rope to define the contours. The two projects inspire the project with the feminine and defining.

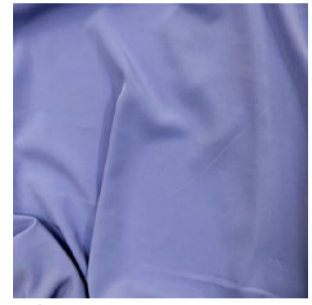
## Fabric Experimentation



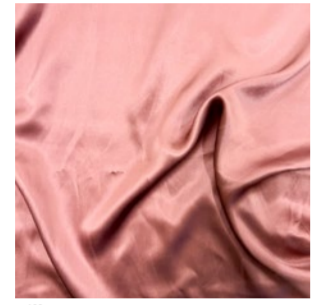
Mesh



Voile



Polyester



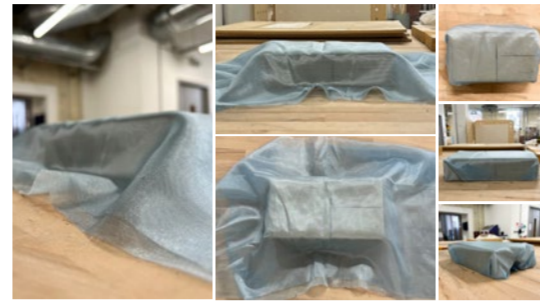
Silk



Silk Cotton

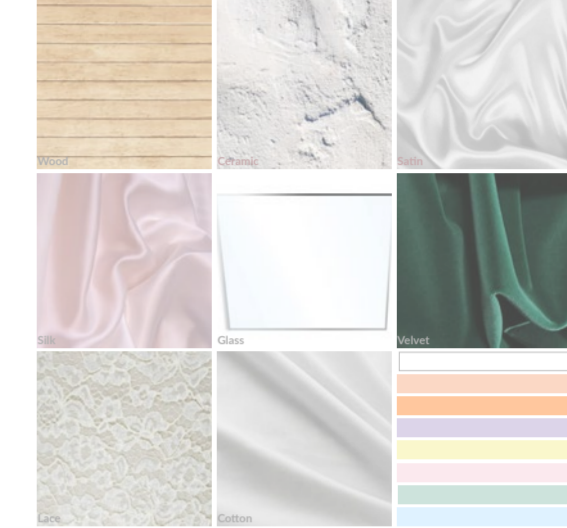


Velvet

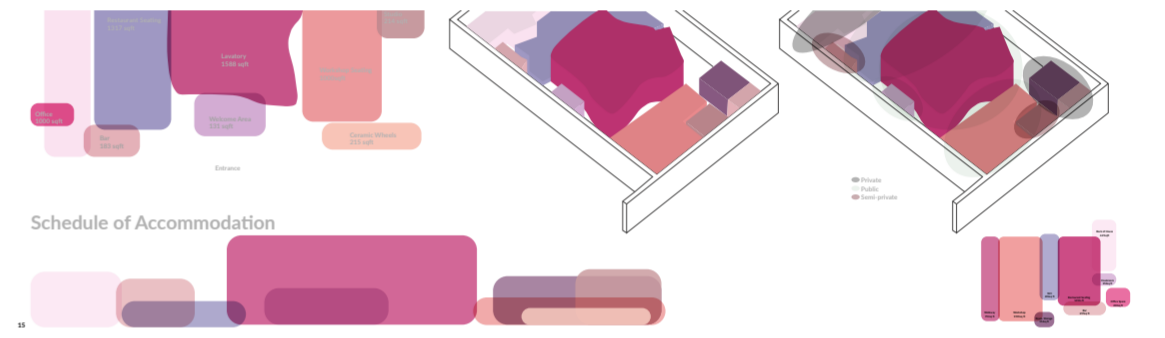


I initiated my experimental process by comparing how each fabric formed around the block of wood. I favoured the fabrics that fell more naturally than others. I imagine a natural and flowing form to drape my lavatory, such as the silk or polyester. The mesh or Voile would be ideal for covering the walls so it is still easy to see out of and to let the light in.

## Feminine materials and colours

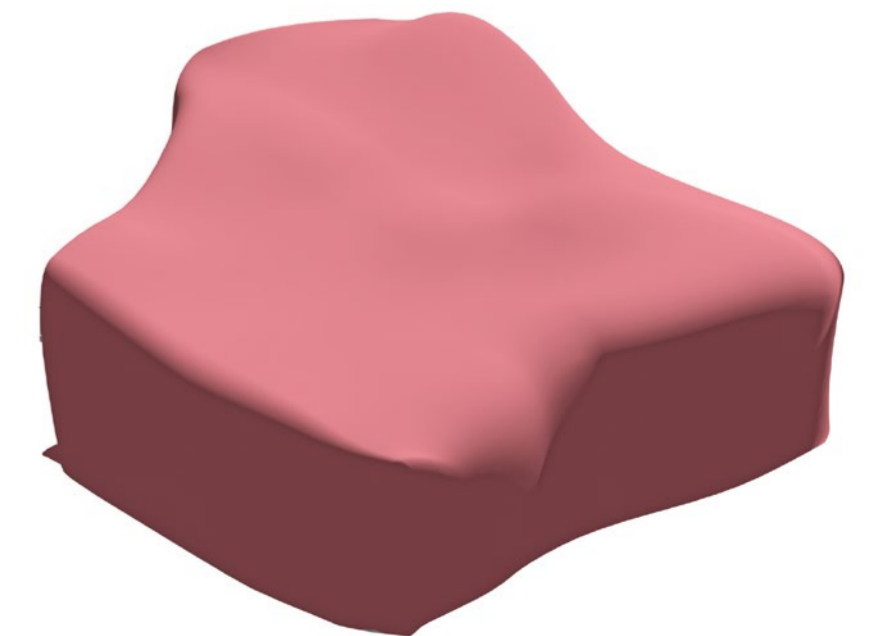
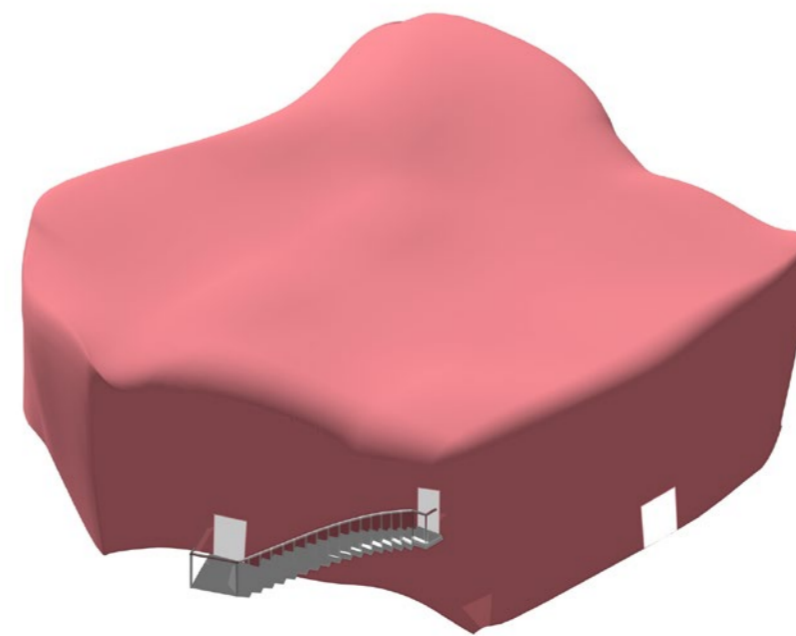
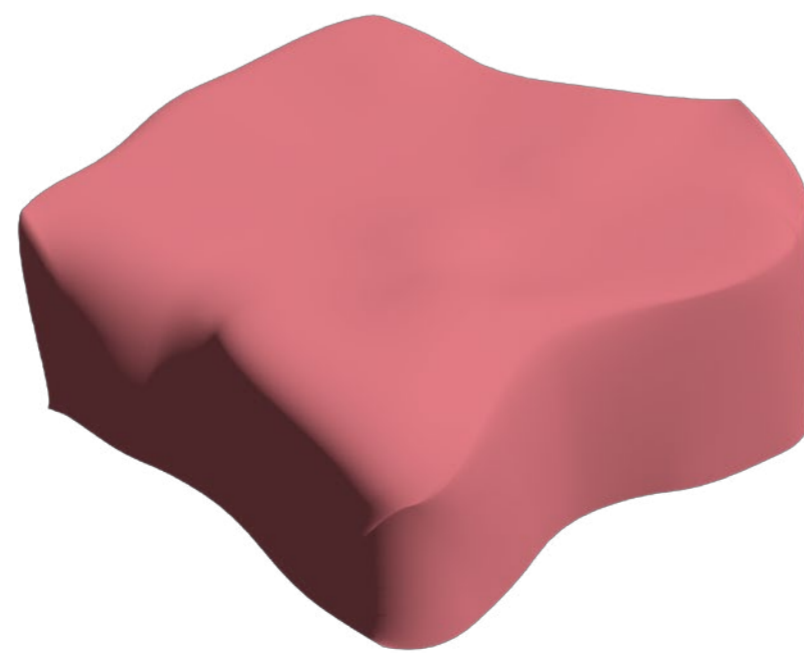
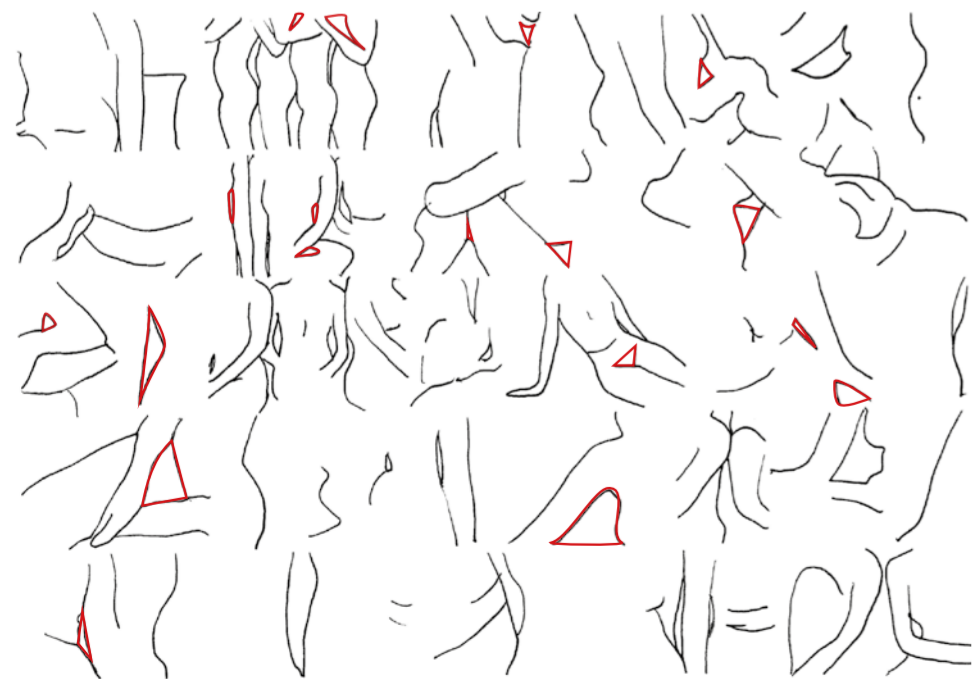
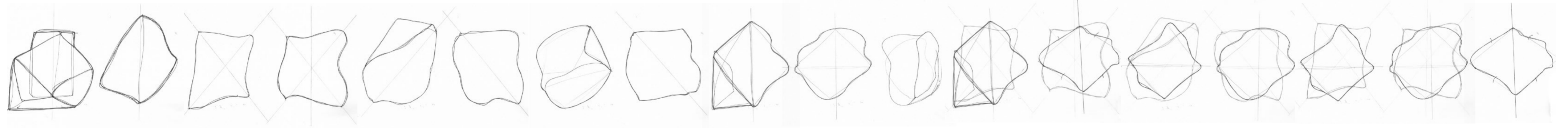


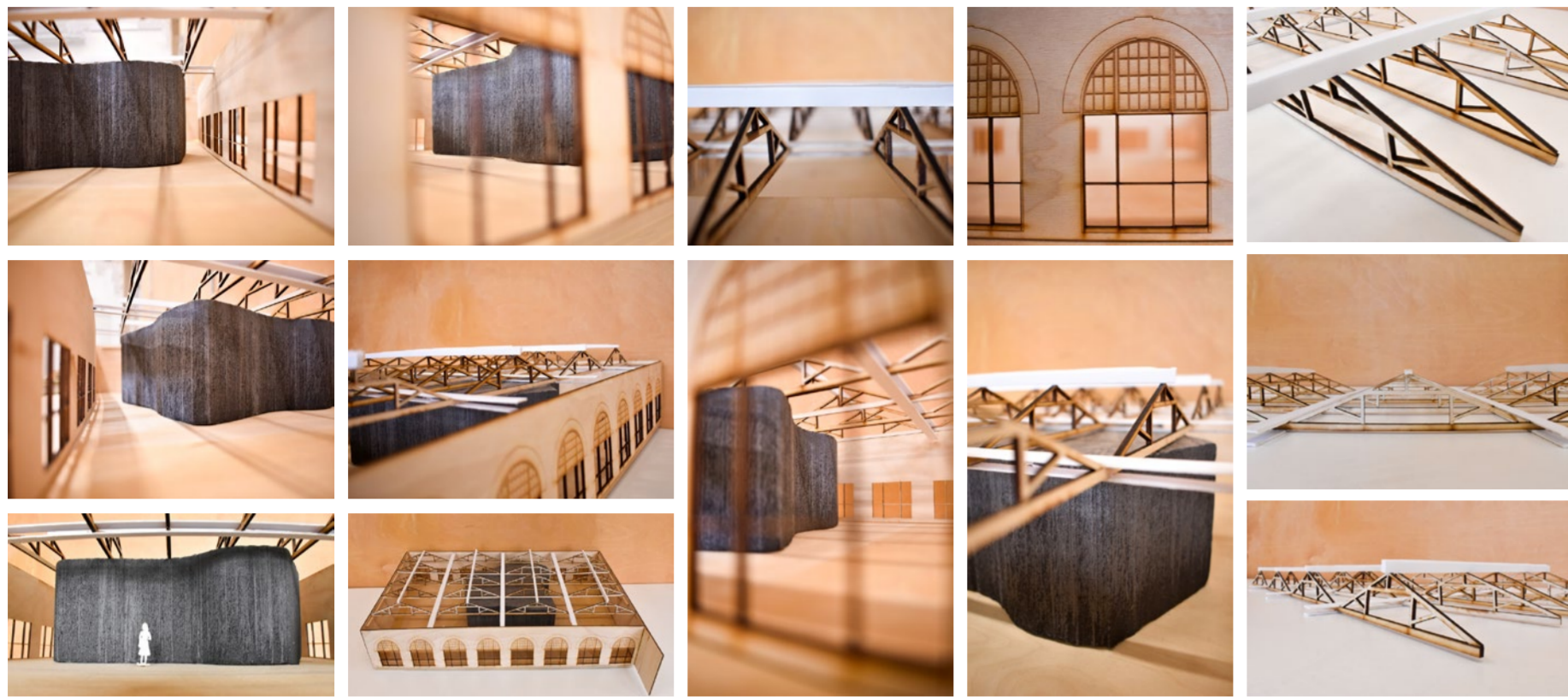
## Restaurant mood board



## Form Development

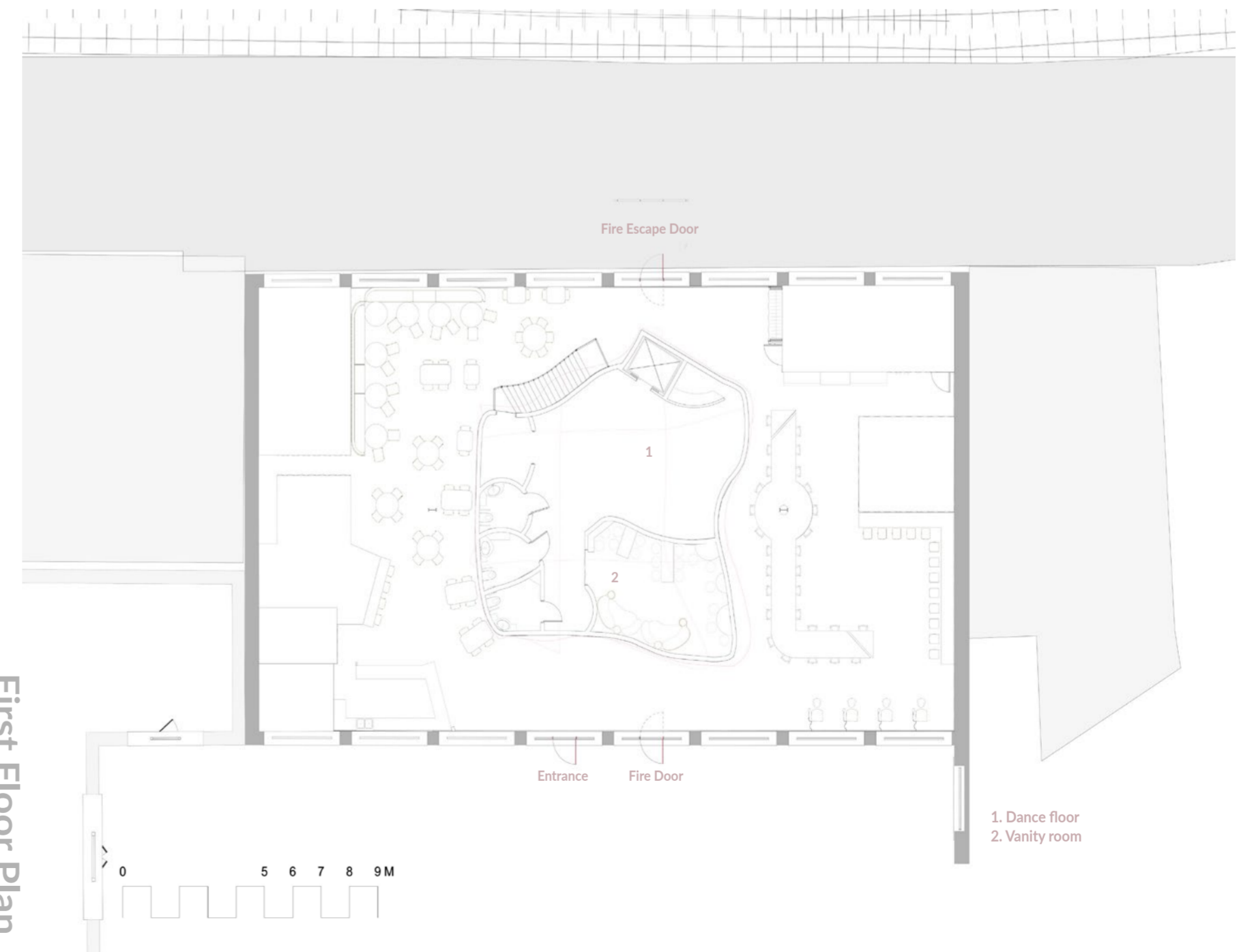
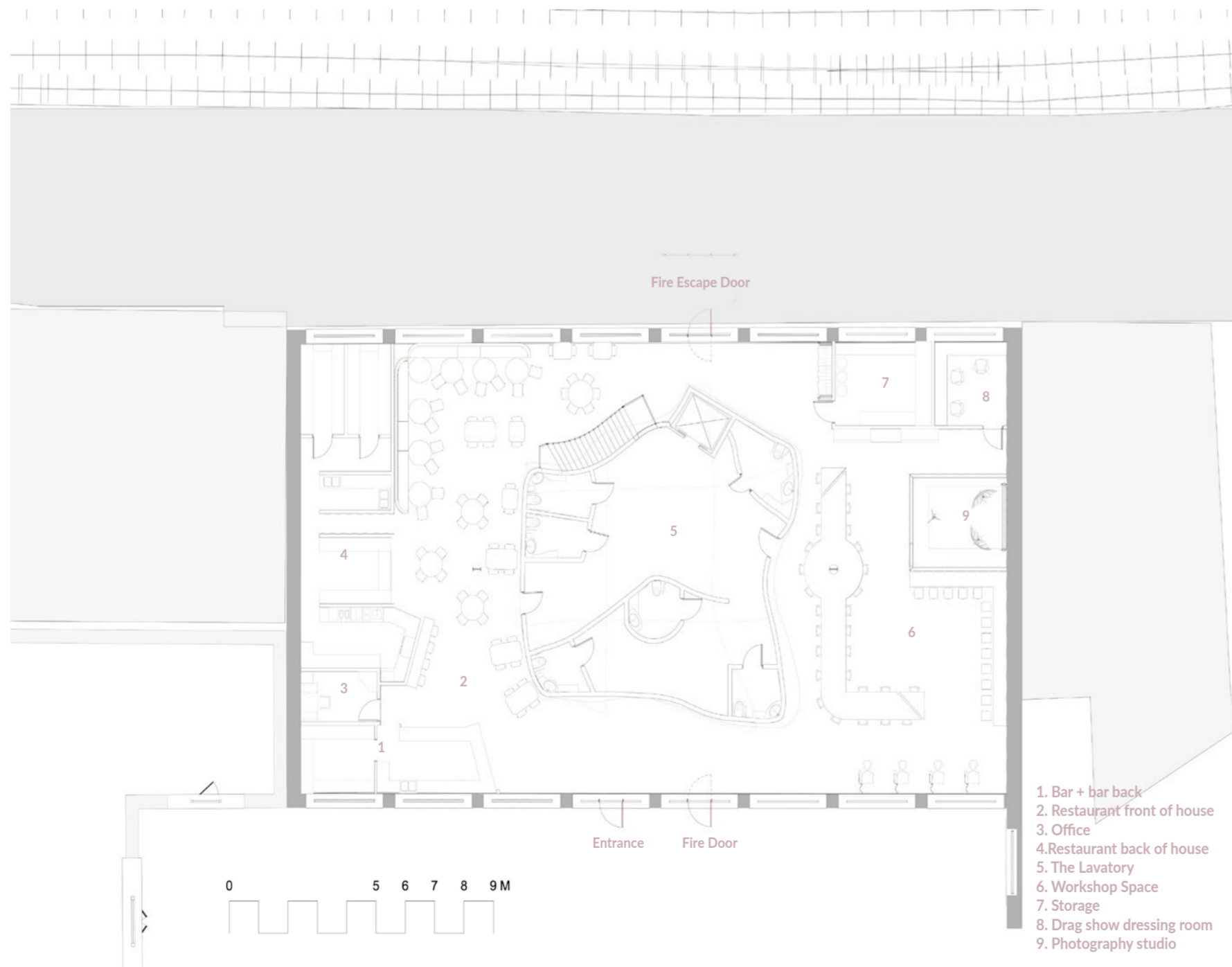
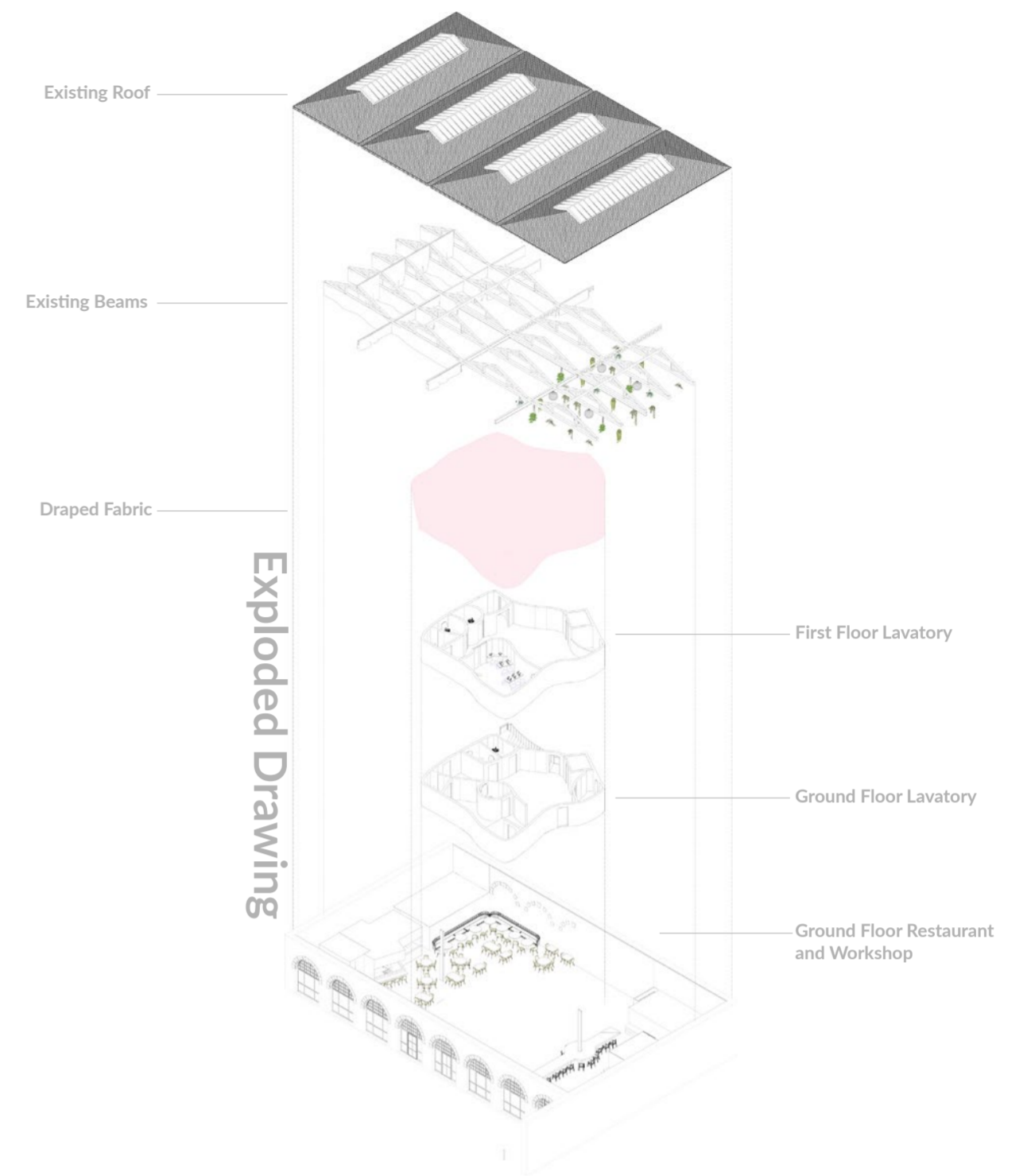
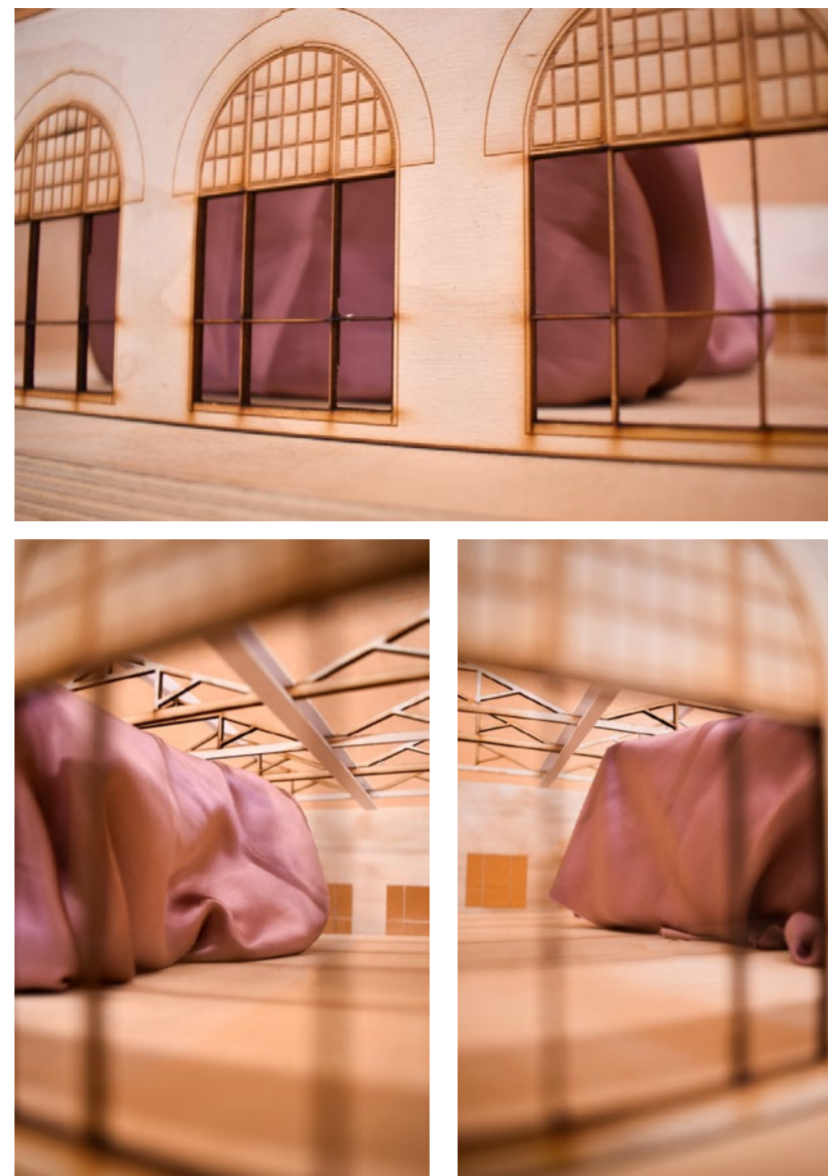
The idea behind the form of the lavatory came from drawing over the photoshoot images and rethinking the idea of the feminine form. I saw a reoccurring theme of triangles so began sketching and exploring different shapes and forms. From the sketches, it is clear that I have used the idea of joining triangles together to create individual shapes to create a subtle connection.





### The Model 1:50

For the physical model I chose to use plywood as I associate wood as a feminine material, it portrays the building in the right perspective. This model was useful for understanding the space, exploring placement and measurements, and experimentation with the fabric. The use of foam board adds a permanence to the space, the material was an easy approach to creating the ideal shape correctly.



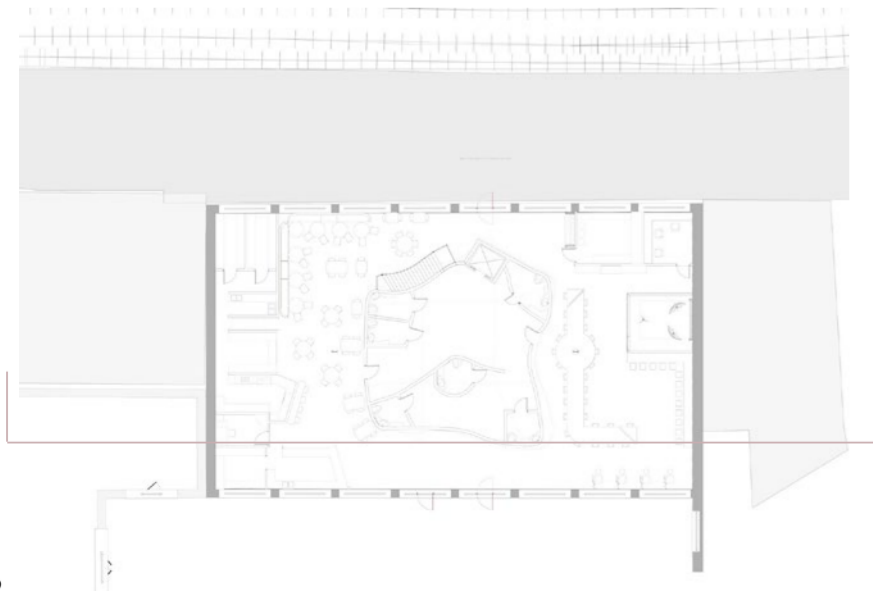


- 1. Hung fabric (walls)
- 2. Lighting
- 3. Food waste stair material
- 4. Marble flooring
- 5. Glass table
- 6. Dining chair
- 7. Concrete wall material
- 8. Hung Fabric (beams)

# Restaurant Entrance



## Front Section





# Workshop: Daytime

