



Investigating Urban Repair

Tangent

Side Elevations

The original building is constructed with sandstone brick with detailed accents decorating the facade. The building's elevation on Chapel Walk follows this theme and as you use the pedestrian walkway into the retail street you are enticed by its big windows with intricate frames.

However on the Black Swan Walk elevation it houses the facilities of the building such as fans, drainage pipes and vents. Black Swan Walk has unfortunately become a bin storage road for the neighbouring shops, unsightly and unpleasant for people to walk down.



Chapel Walk Elevation
Not to scale



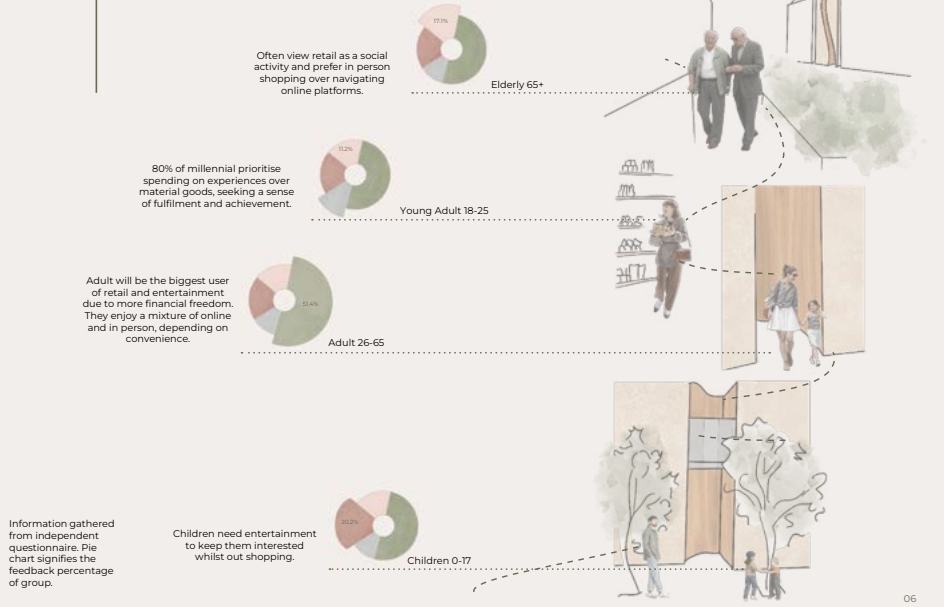
Black Swan Walk Elevation
Not to scale



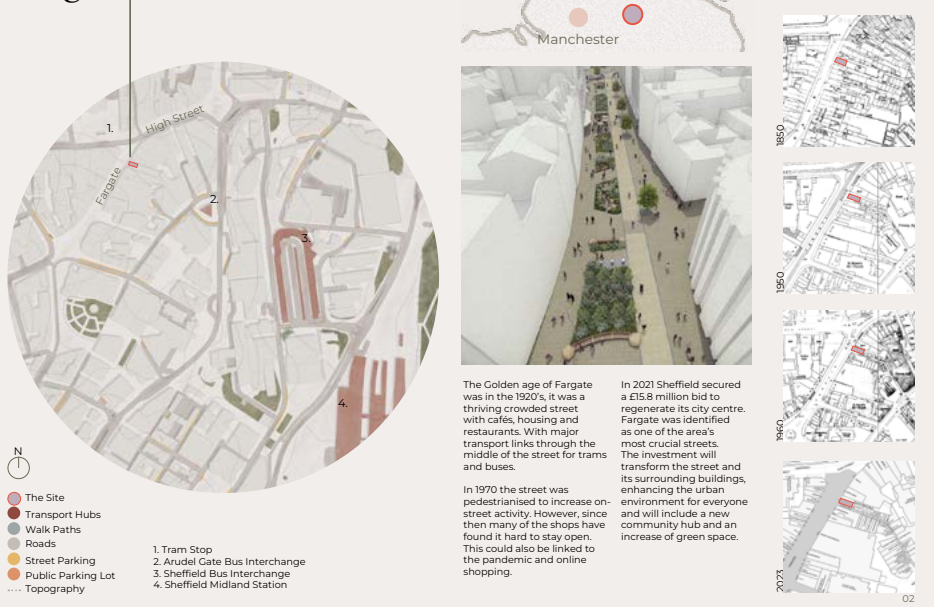
During my extrapolation of the existing building, I became interested in the entrances of the neighbouring streets. They are both unwelcoming with a lack of good signage, light and not particularly clean. This led me to research what are inviting entrances. I identified that using light and wide openings are found to be more interesting and are best to entice people in as it allows for curiosity of what is there.



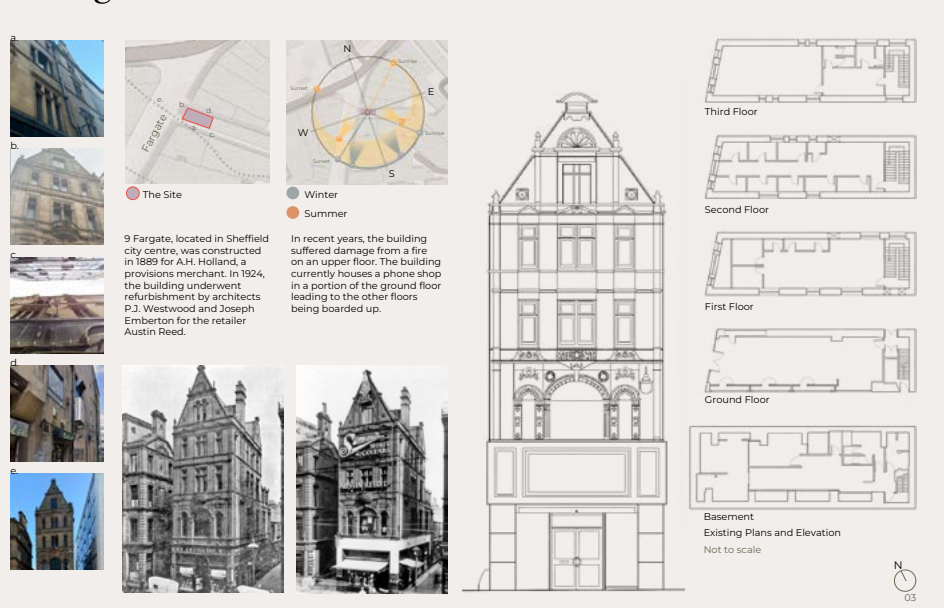
Users



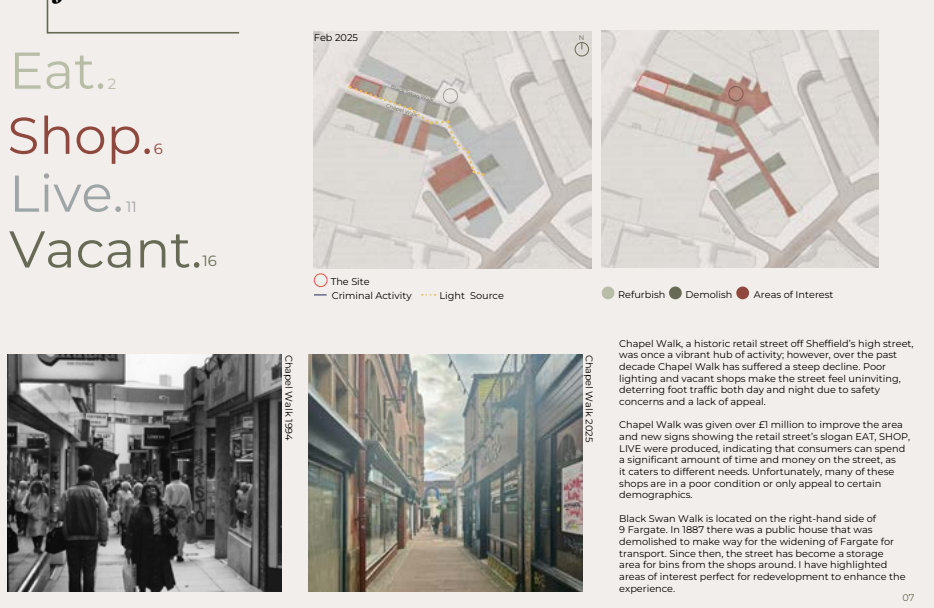
Fargate



9 Fargate



Adjacent Streets



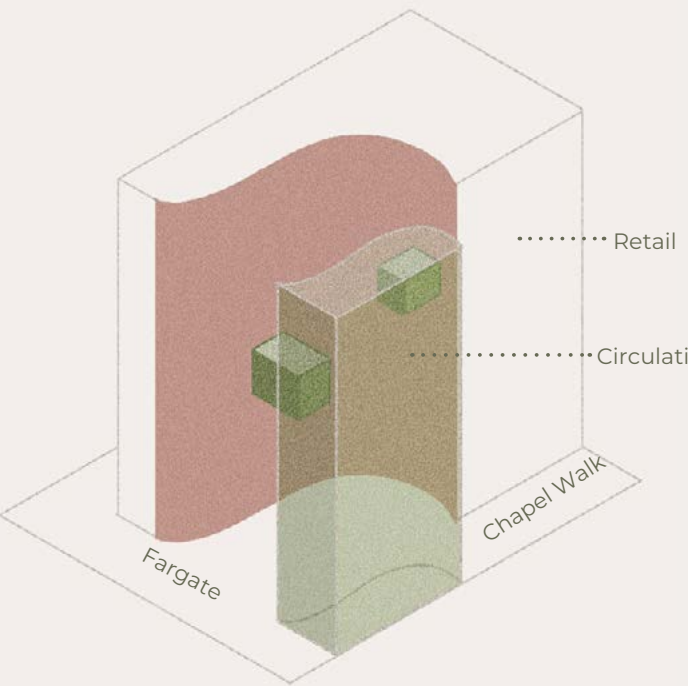
Line of Desire

An unplanned route or path

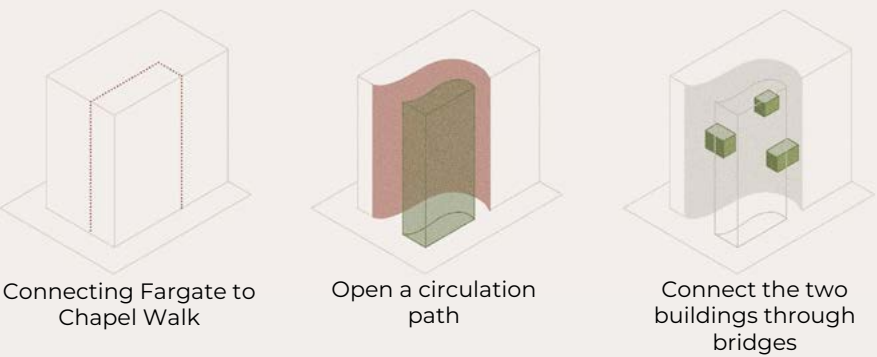


Inspired by the natural paths people create as they move through spaces, these organically worn paths informed a new circulation strategy. Reimagining this concept into the redesign of 9 Fargate to guide users intuitively from the building's entrance toward Chapel Walk. The opening creates a new pathway on the ground floor, while the void on the other floors creates an experience for users to have new perspectives around the building, as well as letting light flow around the space.

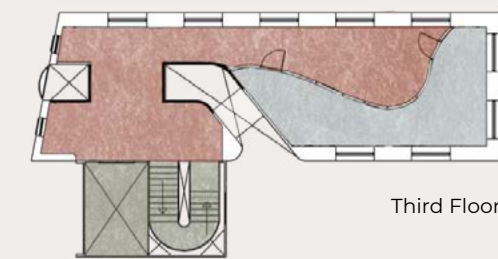
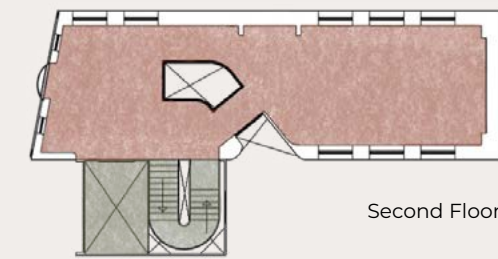
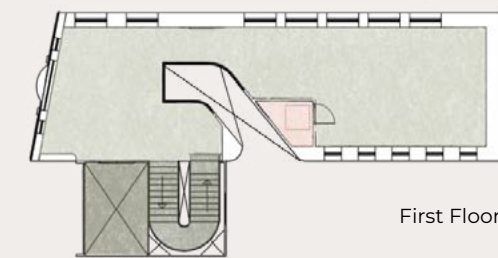
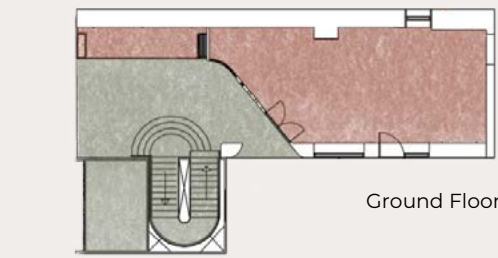
A new structure would be built at the current entrance of Chapel Walk to create this path. The structure houses essential services such as the staircase and lift. While this modern addition enhances functionality and flow, importantly, the existing façade is preserved to retain the building's historic character.



I explored various entrance configurations and internal pathways, experimenting with form, light and shadow to create dynamic spatial experiences. The goal was to spark curiosity and encourage exploration through carefully crafted visual and spatial cues.



Design Strategy

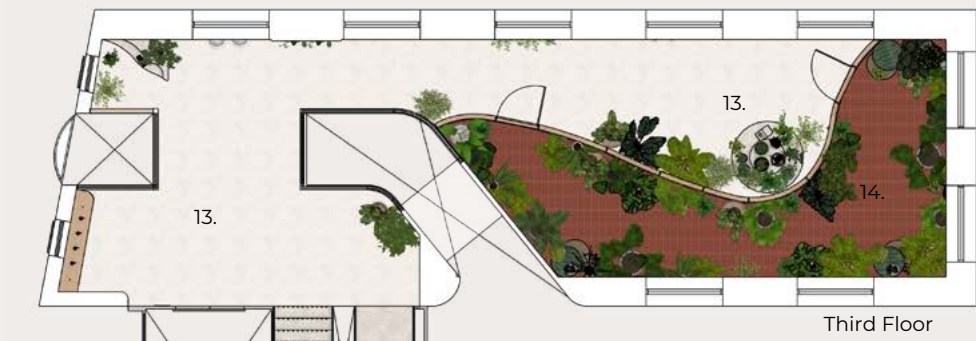
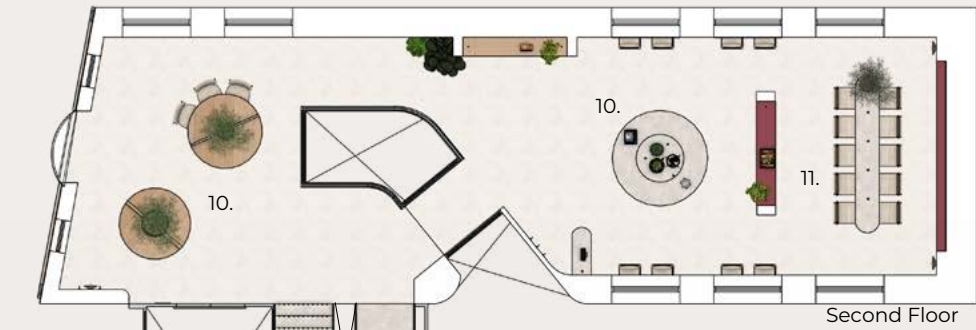


- EAT
- SHOP
- LIVE
- Circulation
- Toilet

N 1:200 at A3

10

Proposal



- 10. Home Retail Seating
 - 11. Seating
 - 12. Lift Shaft
 - 13. Plant Retail
 - 14. Greenhouse
- See Detail page 39 for ceiling installation

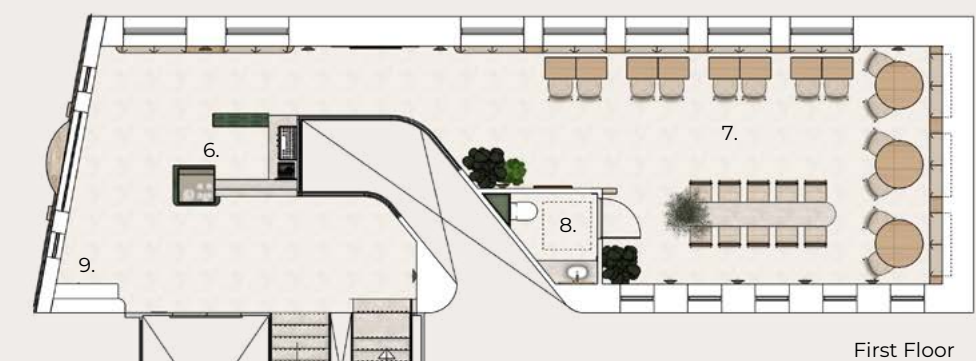
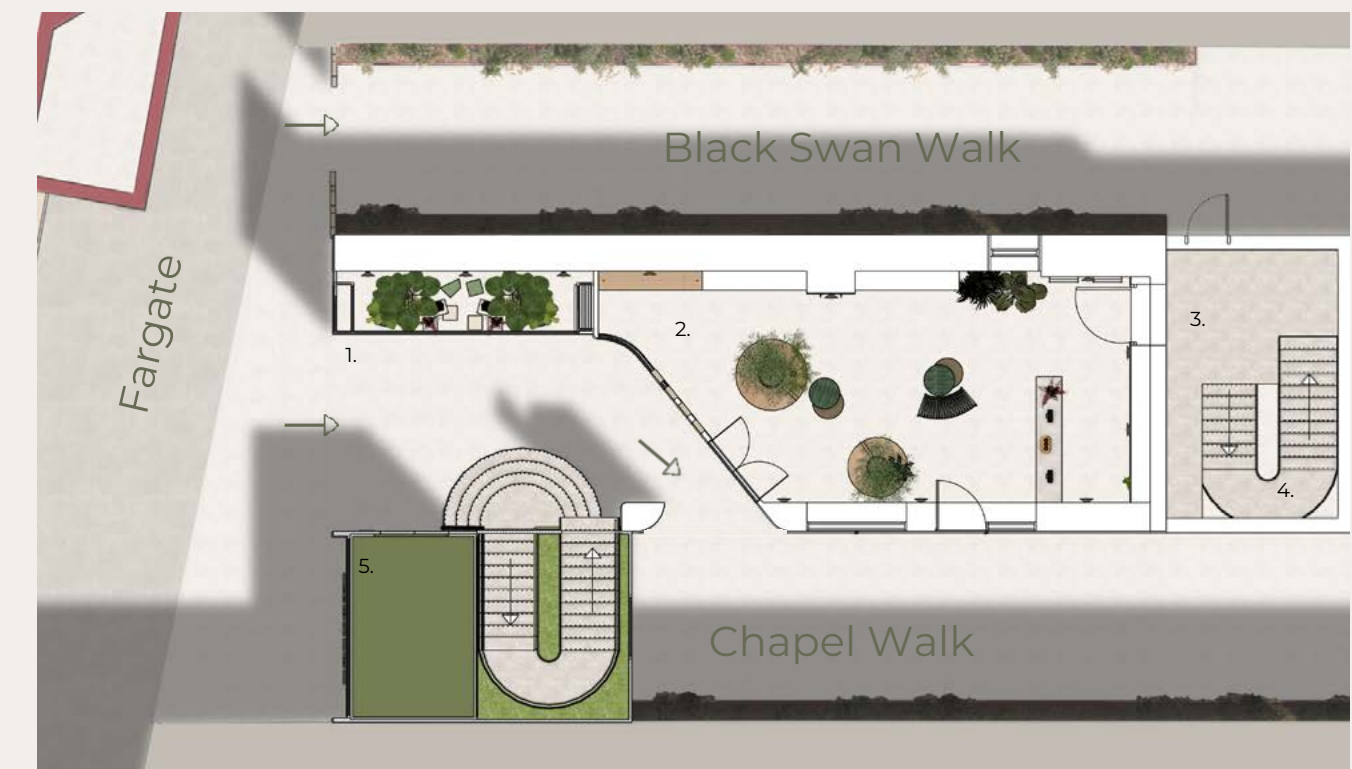
N 1:100 at A3

12



13

Proposal

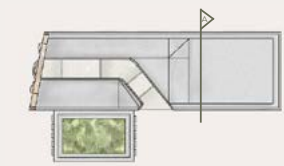


- 1. Cut Flower Stand
 - 2. Artisan Retail
 - 3. Shop Storage
 - 4. Stairs to Basement
 - 5. Lift Shaft
 - 6. Coffee Counter
 - 7. Seating
 - 8. Toilet (Disabled Access)
 - 9. Water Station
- See Detail page 39 for ceiling installation

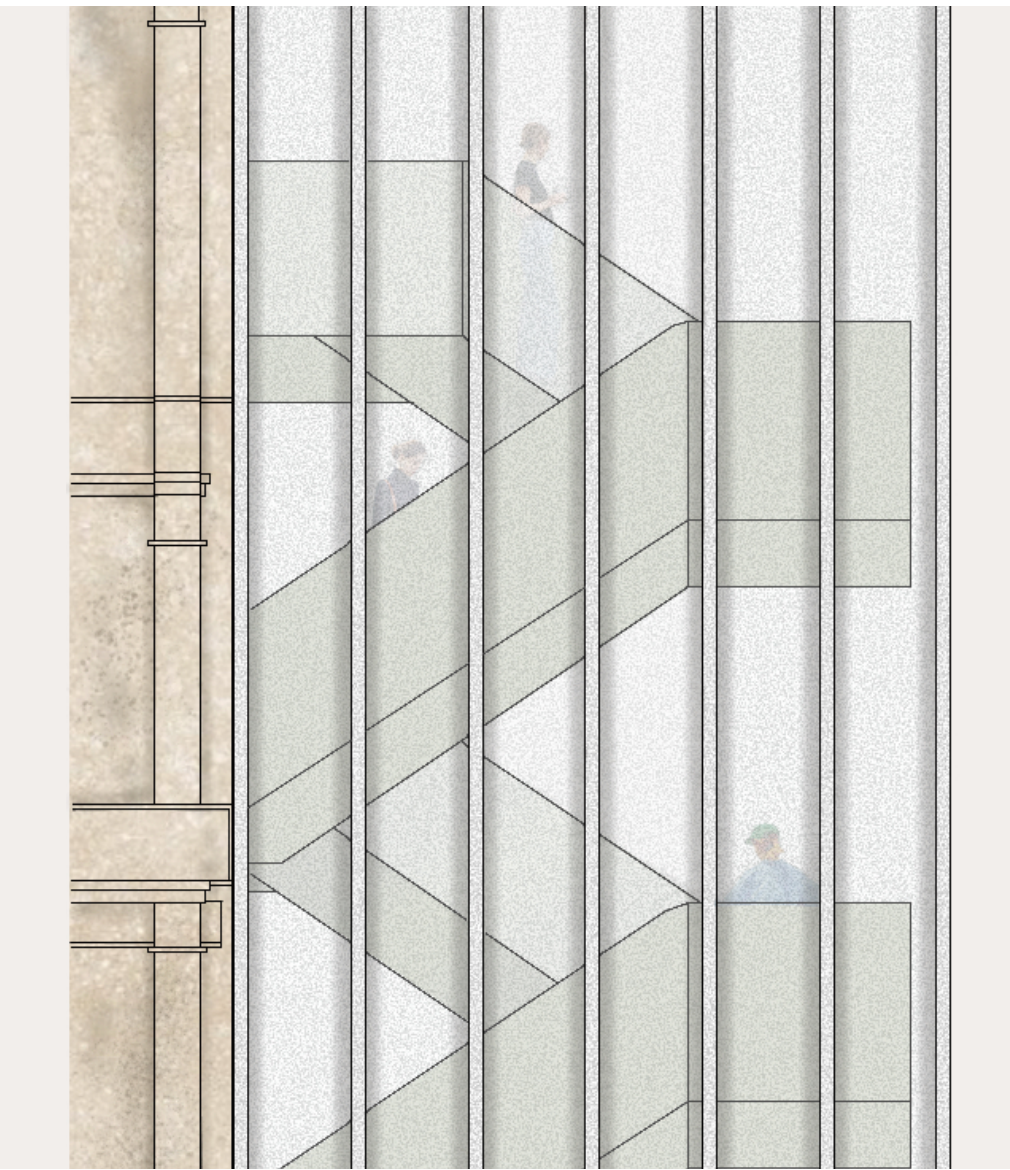
N 1:100 at A3

11

Internal Aesthetic

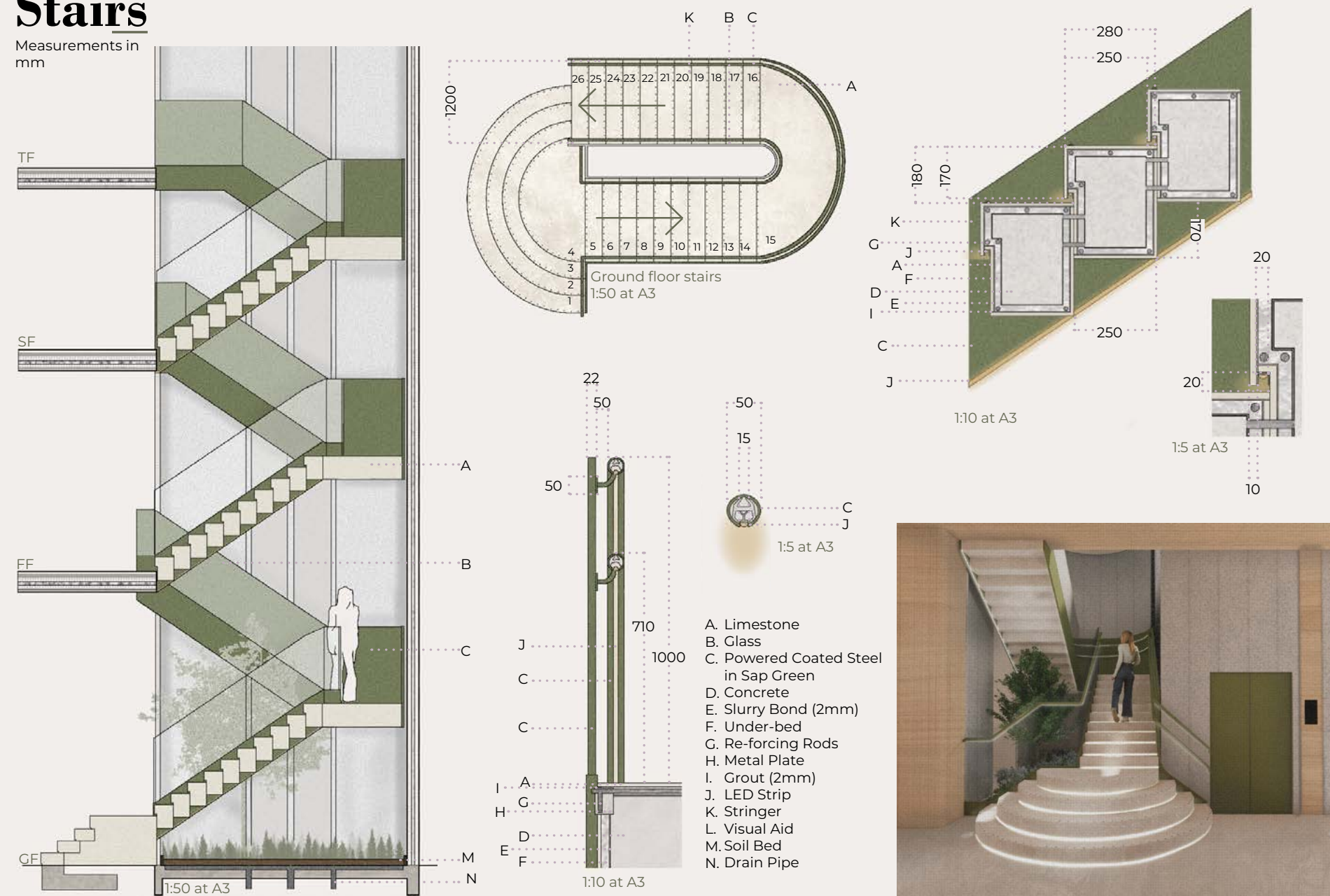


Section A
1:100 at A3



Stairs

Measurements in mm



29

Void

Measurements in mm



Creating an experience while increasing light

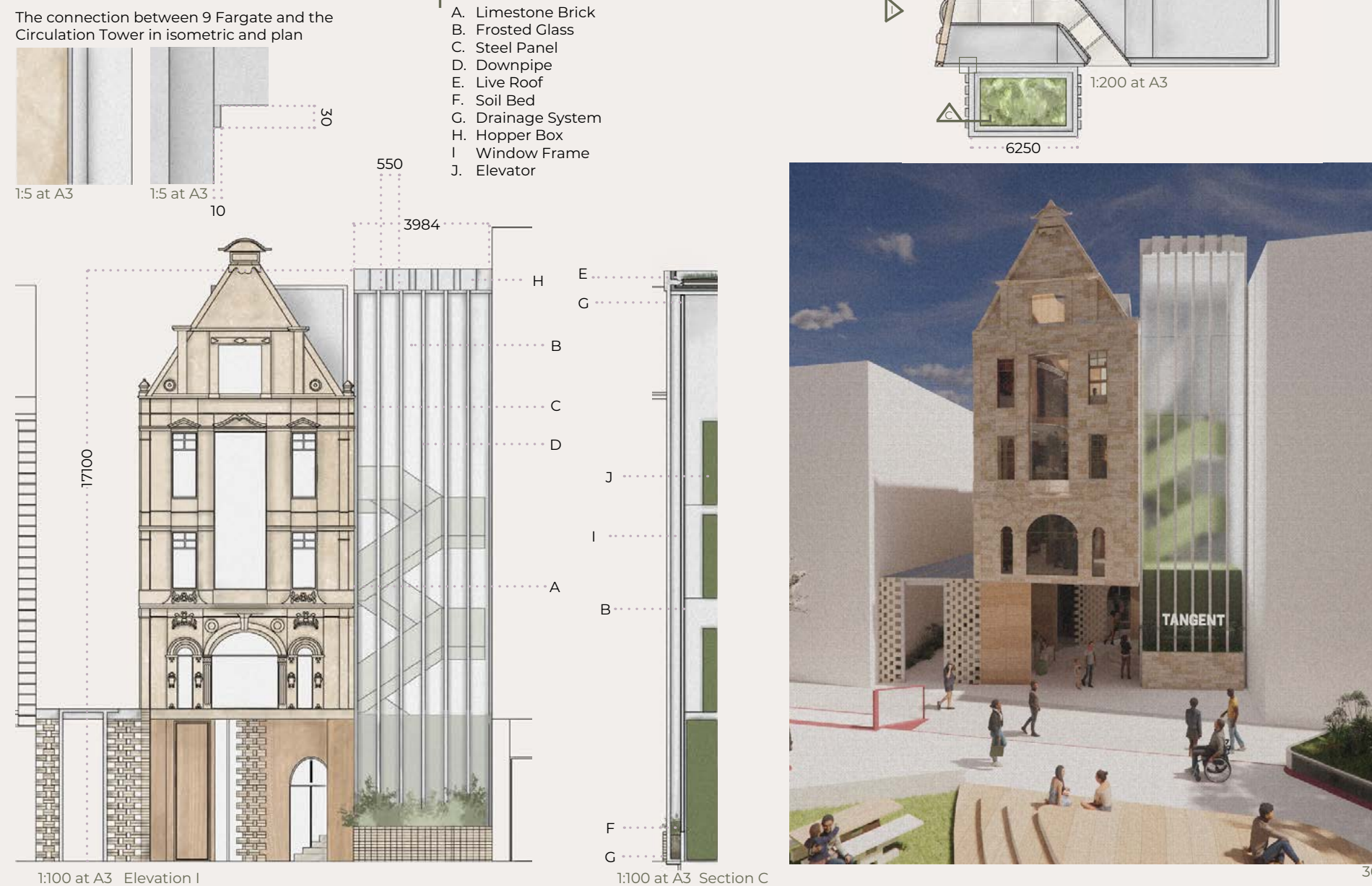


31

Circulation Tower

Measurements in mm

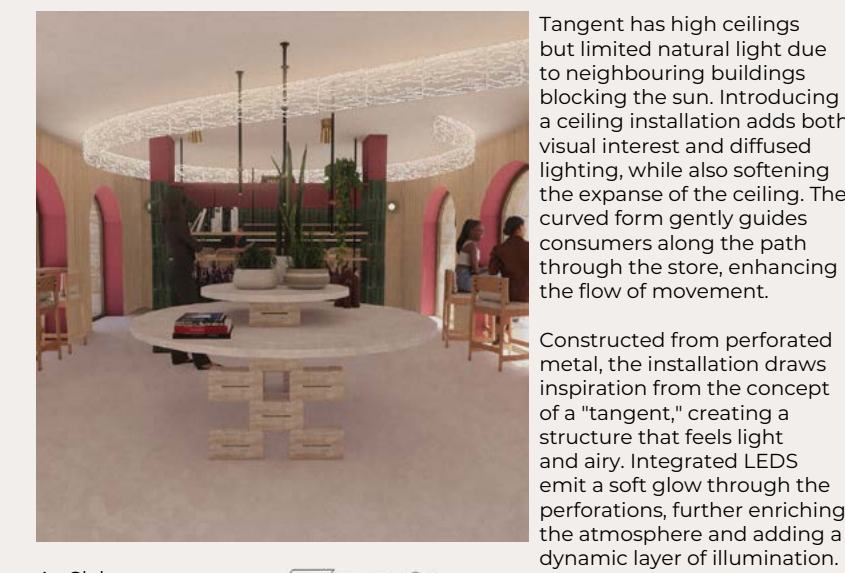
The connection between 9 Fargate and the Circulation Tower in isometric and plan



30

Ceiling Installation

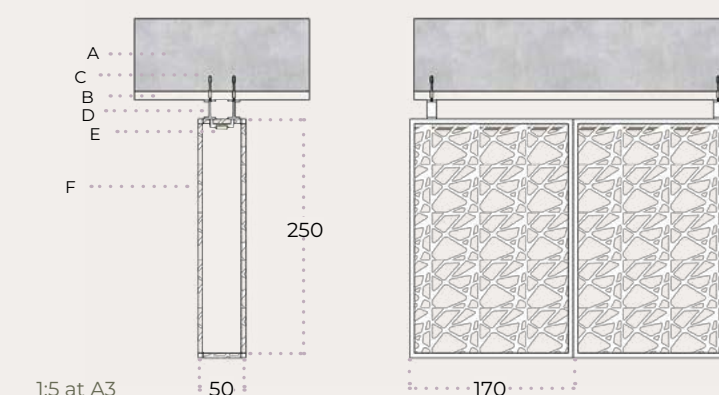
Measurements in mm



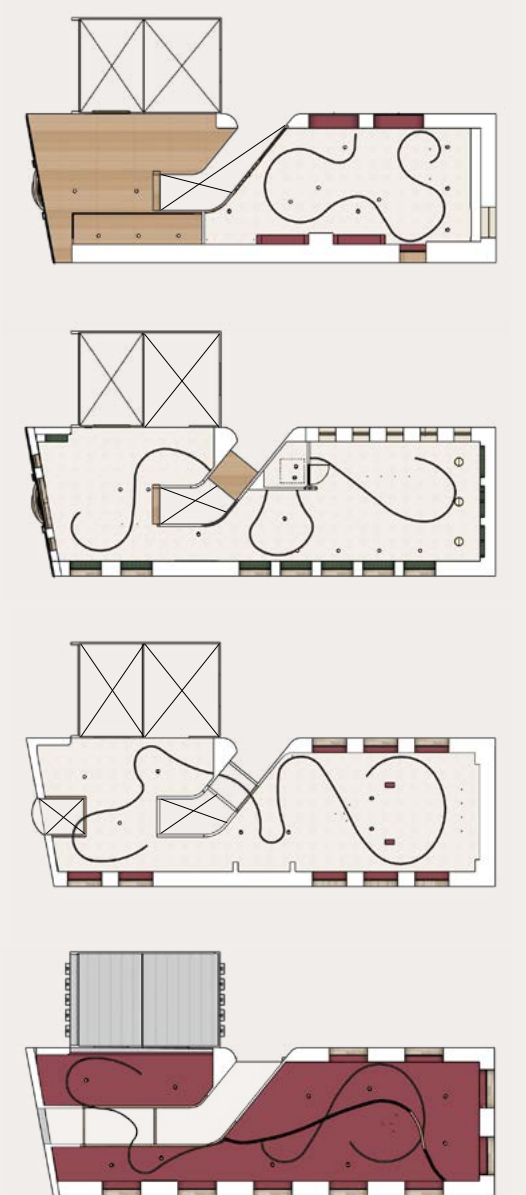
Tangent has high ceilings but limited natural light due to neighbouring buildings blocking the sun. Introducing a ceiling installation adds both visual interest and diffused lighting, while also softening the expanse of the ceiling. The curved form gently guides consumers along the path through the store, enhancing the flow of movement.

Constructed from perforated metal, the installation draws inspiration from the concept of a "tangent," creating a structure that feels light and airy. Integrated LEDs emit a soft glow through the perforations, further enriching the atmosphere and adding a dynamic layer of illumination.

- A. Slab
- B. Ceiling Finish
- C. Expanding Screw
- D. Hanging Brackets
- E. LED Strip
- F. Perforated Metal



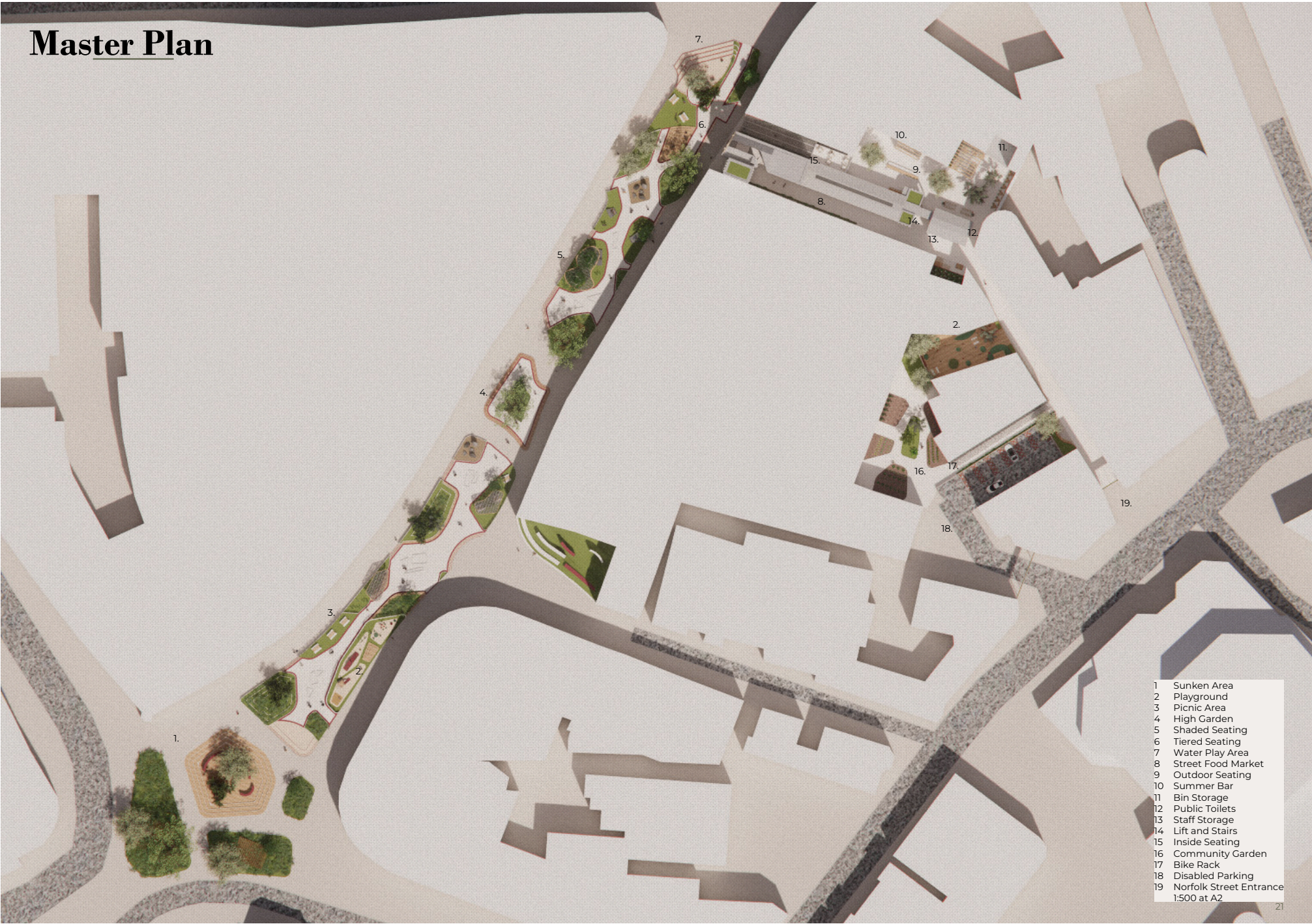
Perforated metal design



Reflected Ceiling Plans
1:200 at A3

36

Master Plan



- 1 Sunken Area
- 2 Playground
- 3 Picnic Area
- 4 High Garden
- 5 Shaded Seating
- 6 Tiered Seating
- 7 Water Play Area
- 8 Street Food Market
- 9 Outdoor Seating
- 10 Summer Bar
- 11 Bin Storage
- 12 Public Toilets
- 13 Staff Storage
- 14 Lift and Stairs
- 15 Inside Seating
- 16 Community Garden
- 17 Bike Rack
- 18 Disabled Parking
- 19 Norfolk Street Entrance 1500 at A2

Taking a Tangent



For this project I set out to explore the role of urban repair by reimagining and restoring underused buildings and spaces to increase community engagement and vitality. My focus begins with the Tangent retail store, using it as a catalyst for wider regeneration efforts across Chapel Walk, Black Swan Walk, and Fargate.

Through strategic redevelopment, the project aims to foster community growth, support local businesses and ultimately enhance the overall quality of life for residents and visitors. A key component of this strategy involves restoring the high street by integrating green spaces and social infrastructure that caters to all demographics. By designing inclusive environments, featuring children's play areas, a variety of seating and resting spaces and accessible facilities such as disabled parking, the project encourages greater interaction, longer visits and a stronger sense of place.

These improvements make the area more welcoming and usable but also drive sustainable economic growth by attracting a diverse range of users and fostering local spending. This approach embraces the principle that thoughtful public space design can transform the high street into a vibrant, multi-functional destination that supports both social wellbeing and economic resilience.

Key Locations



Tangent