

how's this for
heartbreak?

Sav Kes for 'Stay' 2022





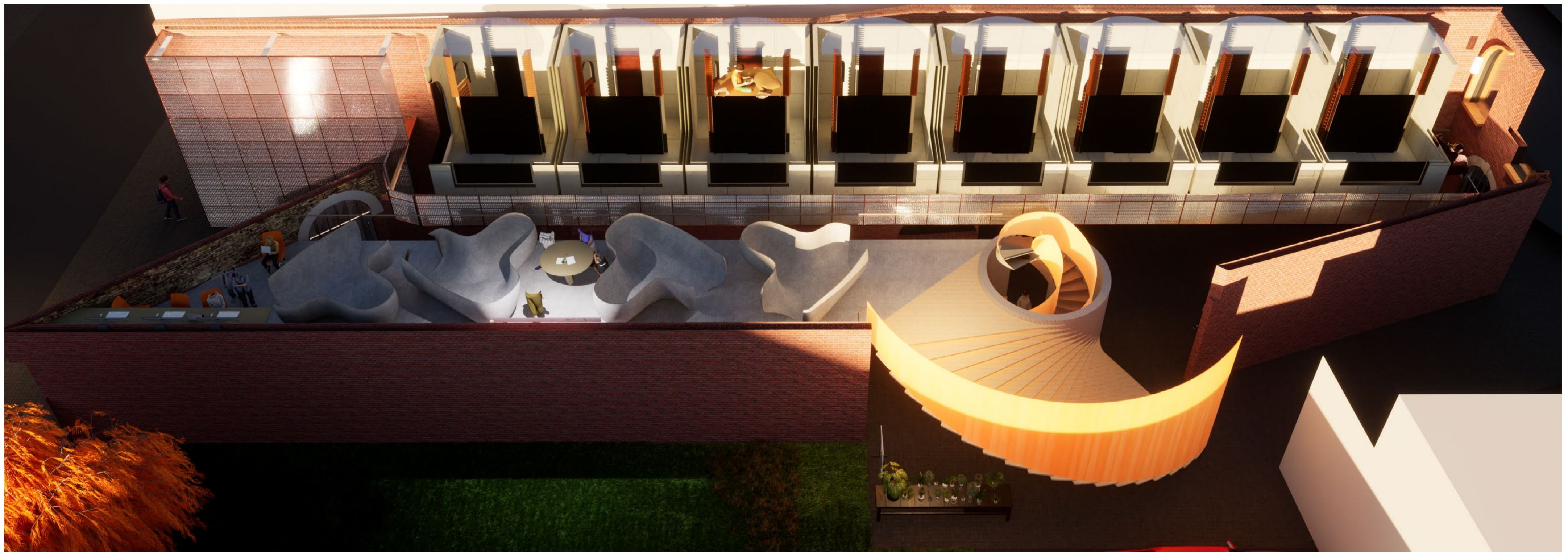
Public Access Exhibition Space (secondary entrance)



Garden Entrance by Exhibition Hall

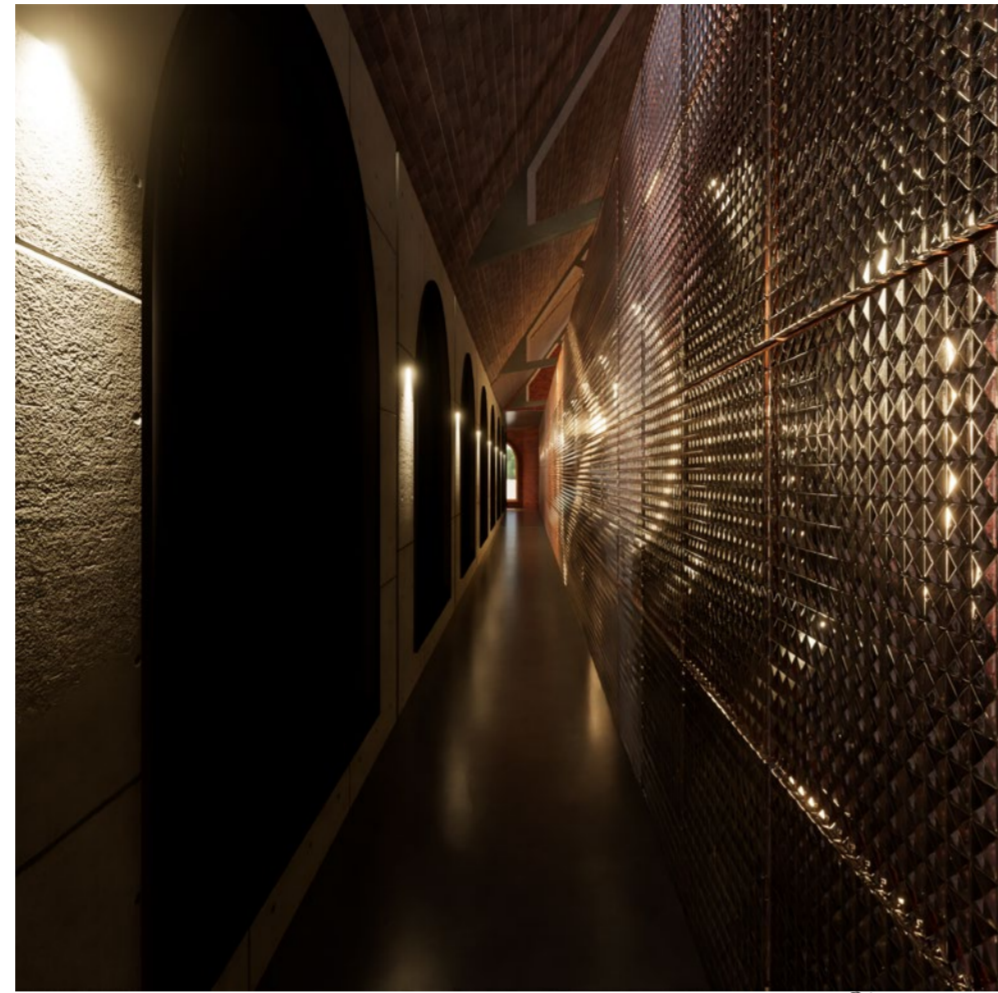


Staircase entrance to walkway

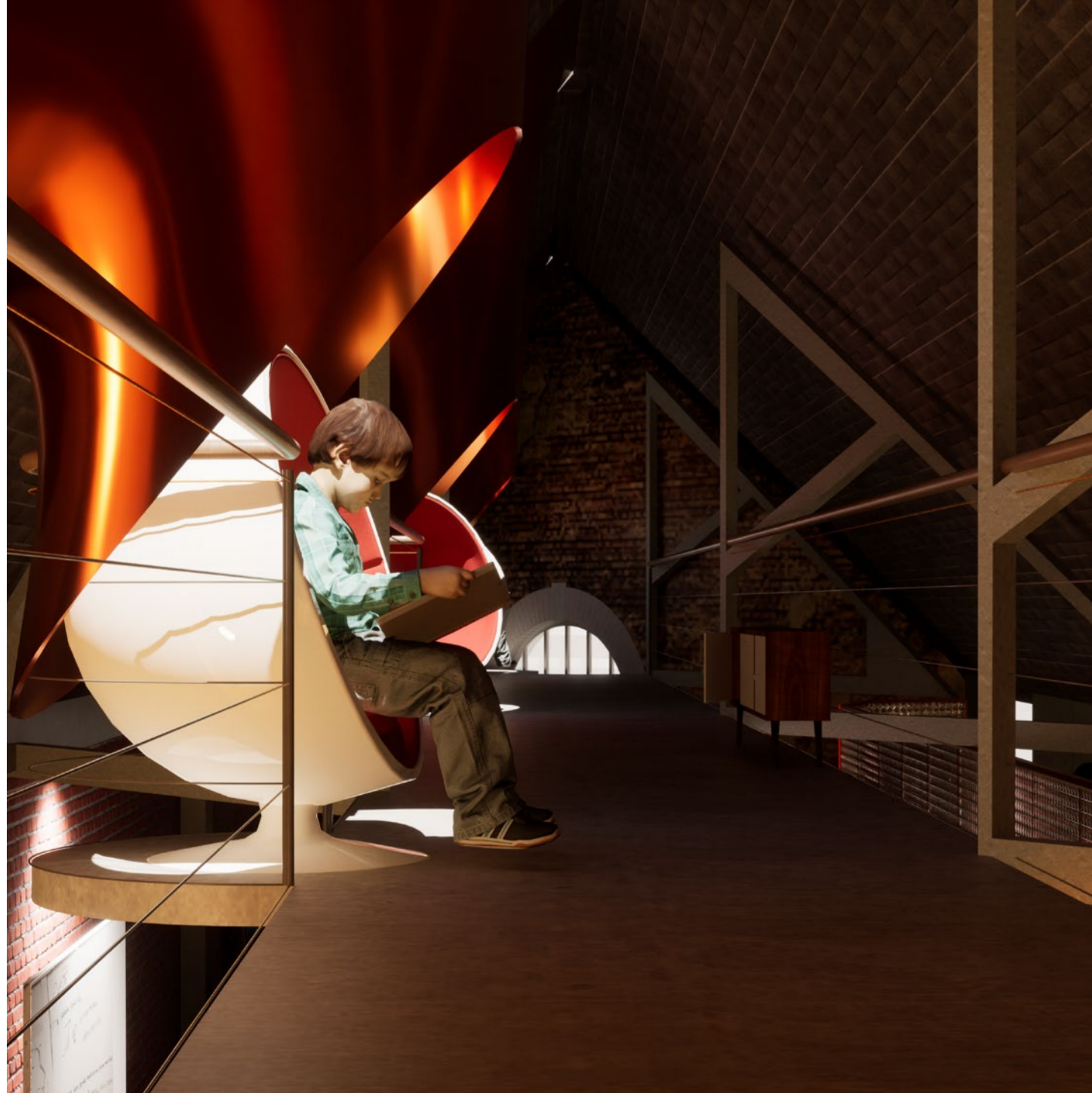
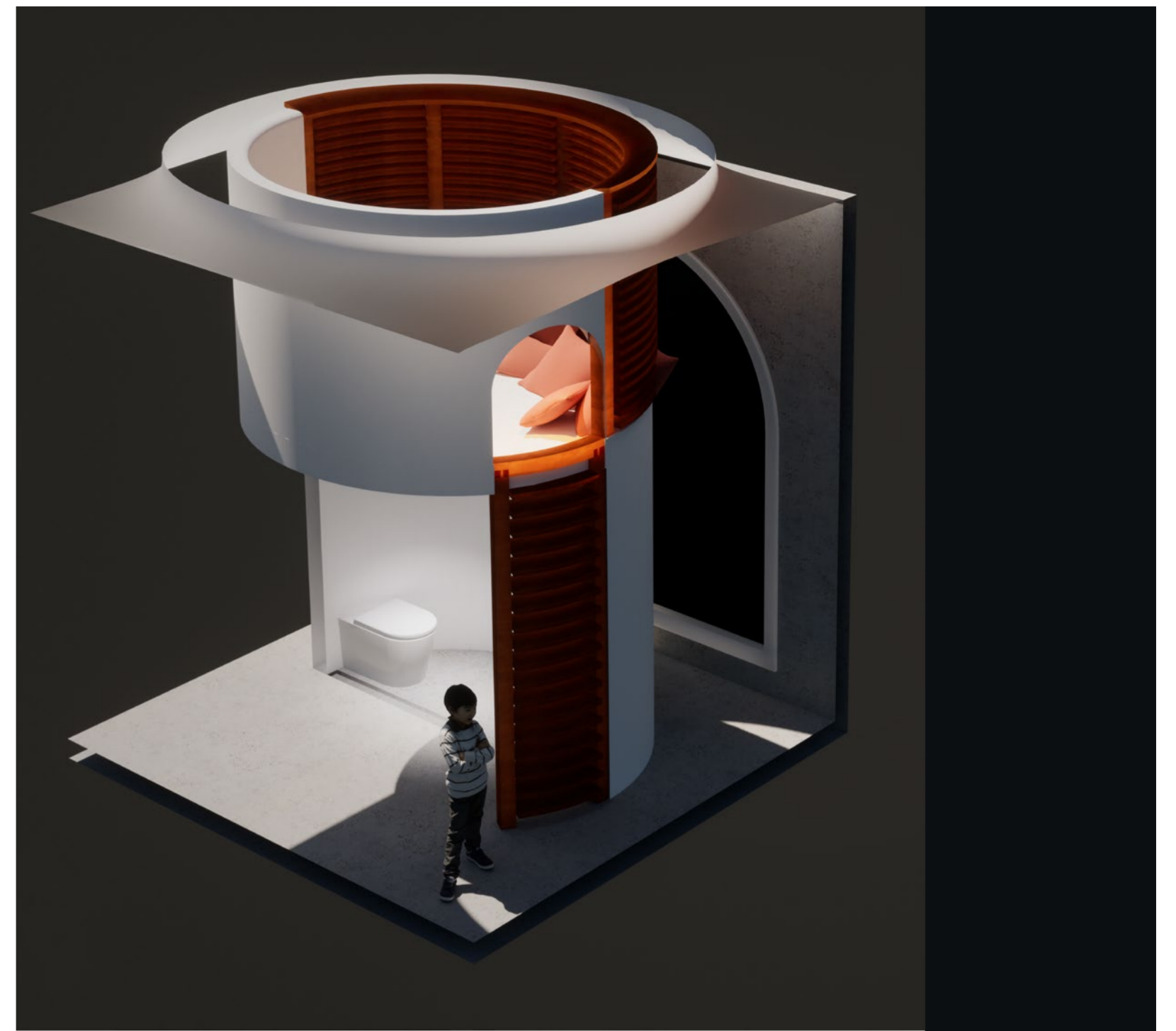
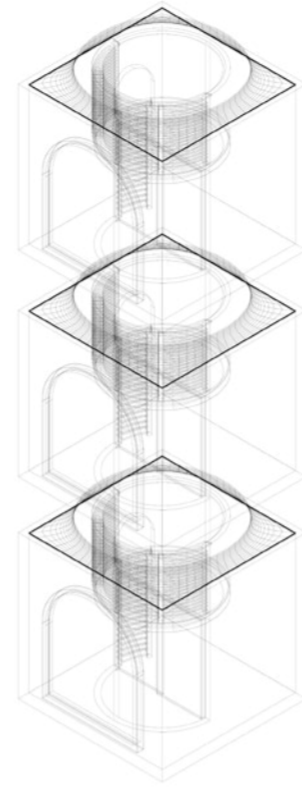




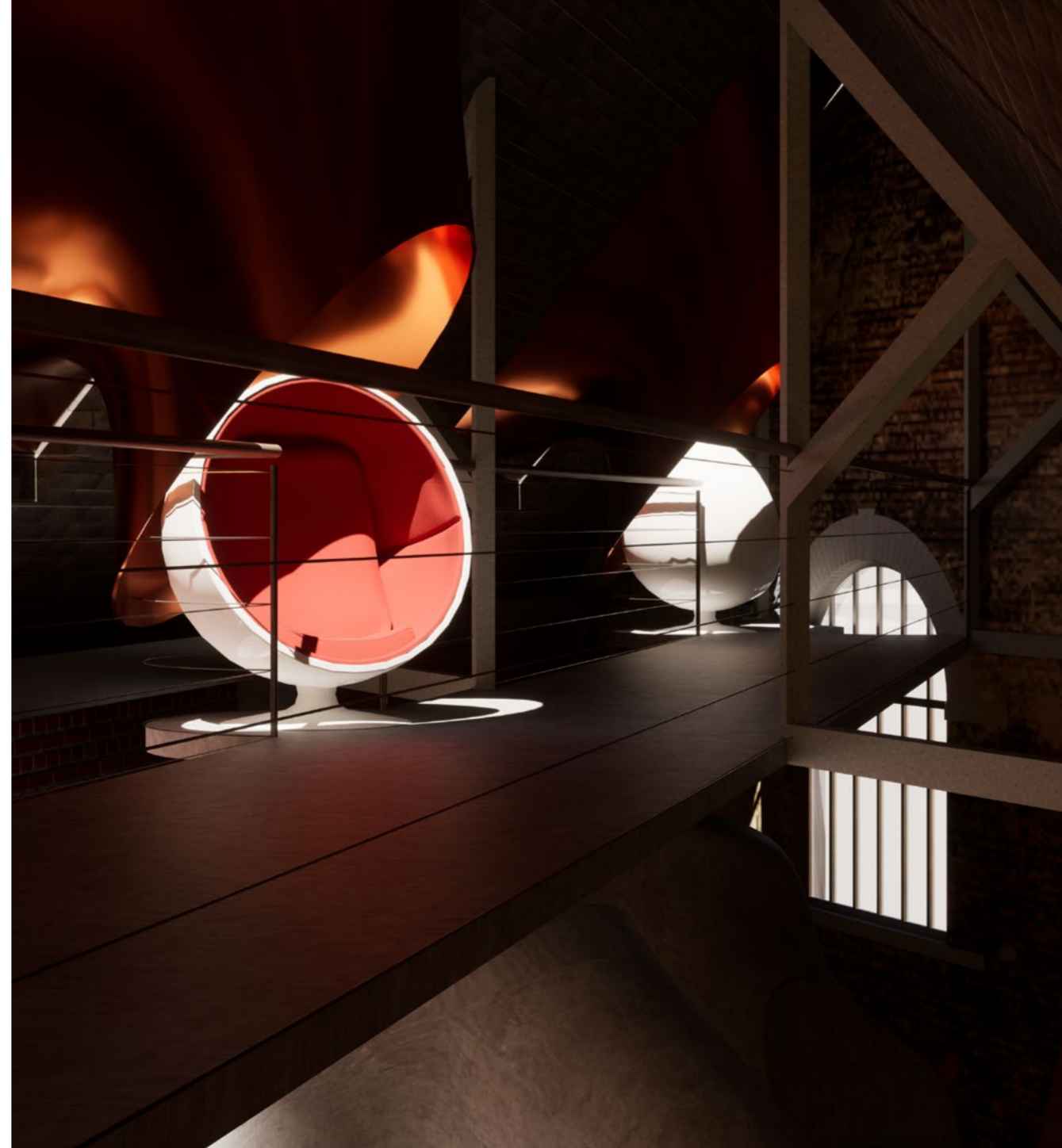
4000mm



Private entranceway



Walkway/Floor2 - Quiet Reading Area



Walkway/Floor2 - Bullethole Skylight Seating



