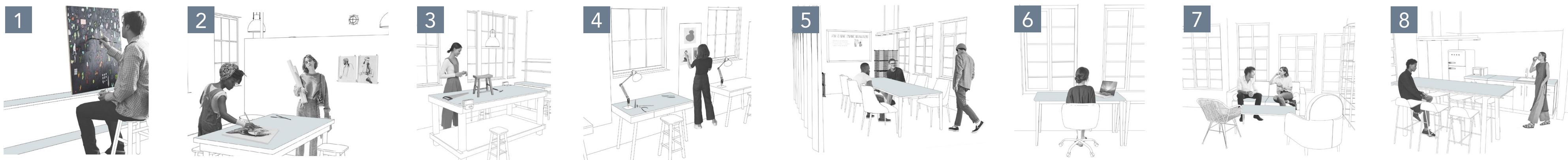
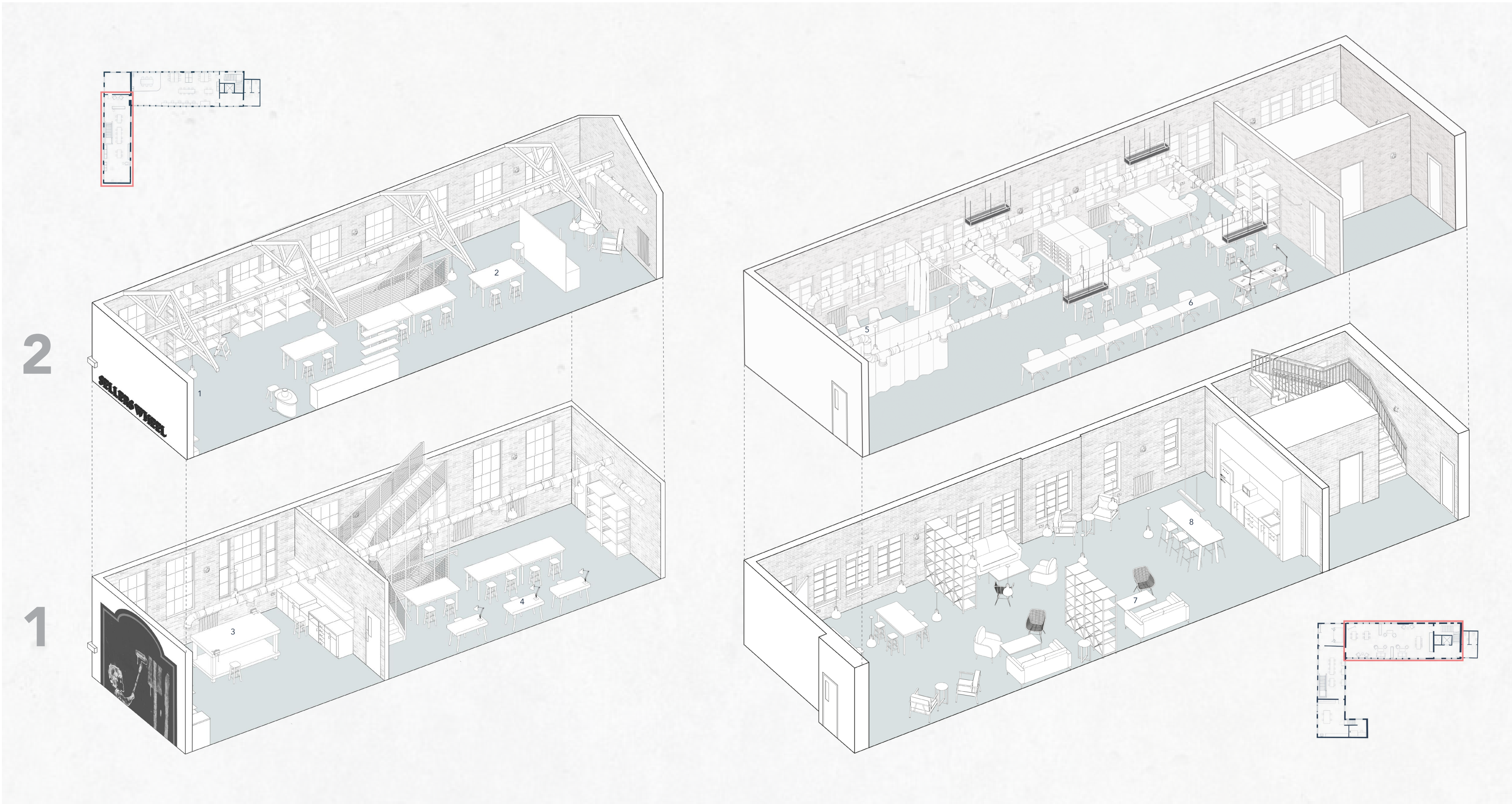


# A NEW WAY OF COLLABORATING IN THE HISTORIC SELLERS WHEEL

A COLLABORATIVE CO-WORKING SPACE  
LAURA FOSTER





# THE FUTURE OF SELLERS WHEEL



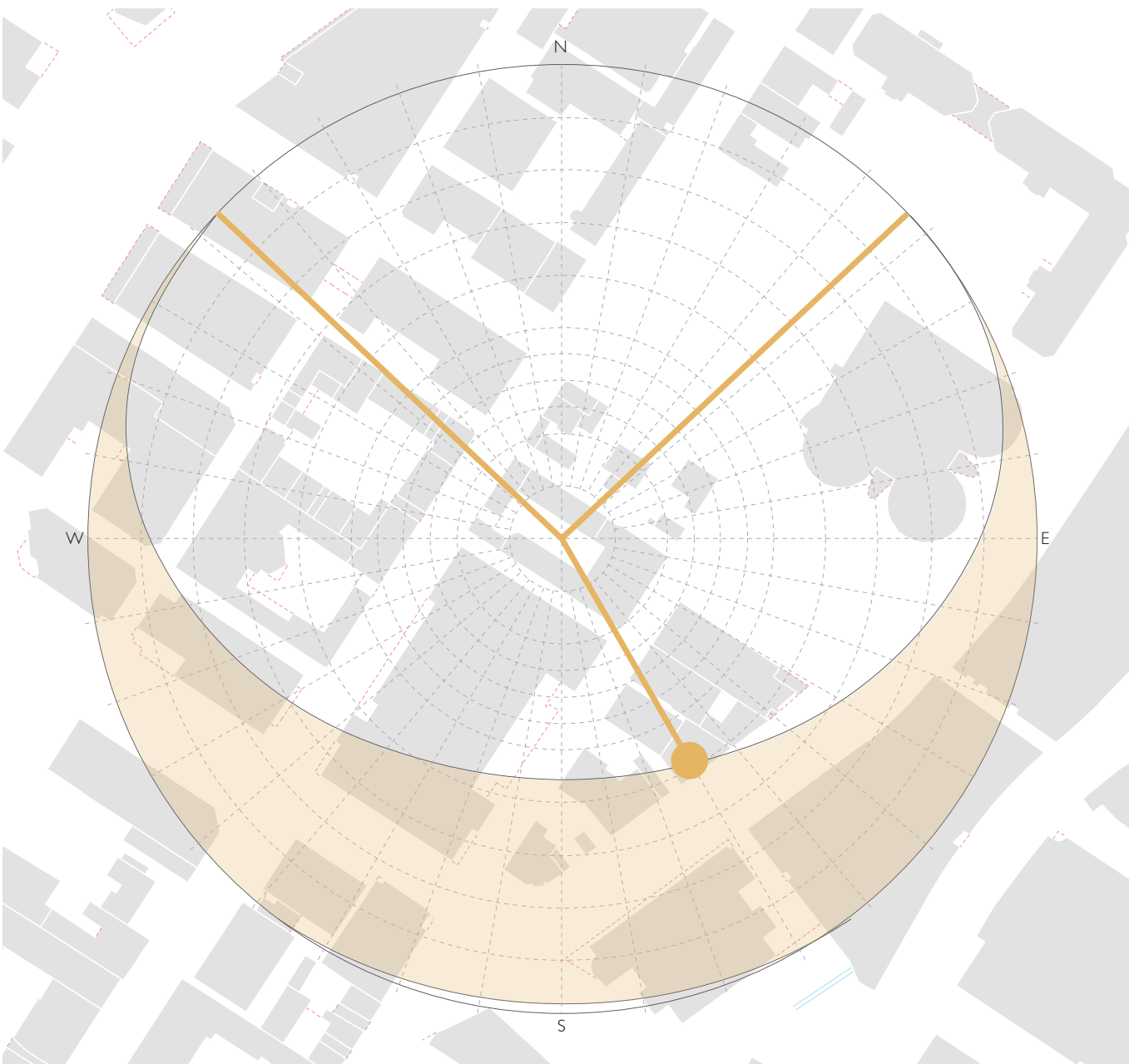
## THE BRIEF

The brief is to create a co-working studio space that is designed with sustainability at the forefront of every decision and, more importantly, how this will impact the people working within the space. Designed for graduates and young professionals, the space offers bookable workshop, studio, and desk spaces to house a variety of creative individuals. The project is based on research from a paper on the effects of a sustainable office space and my own personal experience through the lockdown due to Covid-19, with lack of access to facilities and a place like-minded people can meet.

## SELLERS WHEEL, SHEFFIELD

The building I chose to set my proposal in is Sellers Wheel, a grade II listed building in Sheffield, UK. Built in the 1800's, the building was once occupied by the firm John Sellers and Sons, who manufactured many tools such as pen-knife, surgeons instruments and engraving tools

As the building was once a place where people were employed to craft such beautiful tools, I wanted to continue that legacy and enable products to be forged and created within the walls again.



## CREATIVE COLLABORATION

In order to understand what facilities I could include in my space, I looked at which creatives would benefit from a studio space, especially if they were freelancing or not working within a large company. Due to the location of the site, being nestled within a university campus, I established my target audience would be graduates and young professionals who are just starting out in their careers, who don't have access to the facilities that they may have had at university.

I decided to target the group of creatives shown in this illustration, as I believed each of these types of individuals would benefit from experiencing chance interactions with each other and the space would be able to encourage collaboration between them.

The photographer is central within the group as photography is crucial to almost any line of creative work to demonstrate and share the final outcome, therefore I believe the most collaboration could happen with these individuals.



## SUSTAINABILITY AND ENHANCING WELLBEING

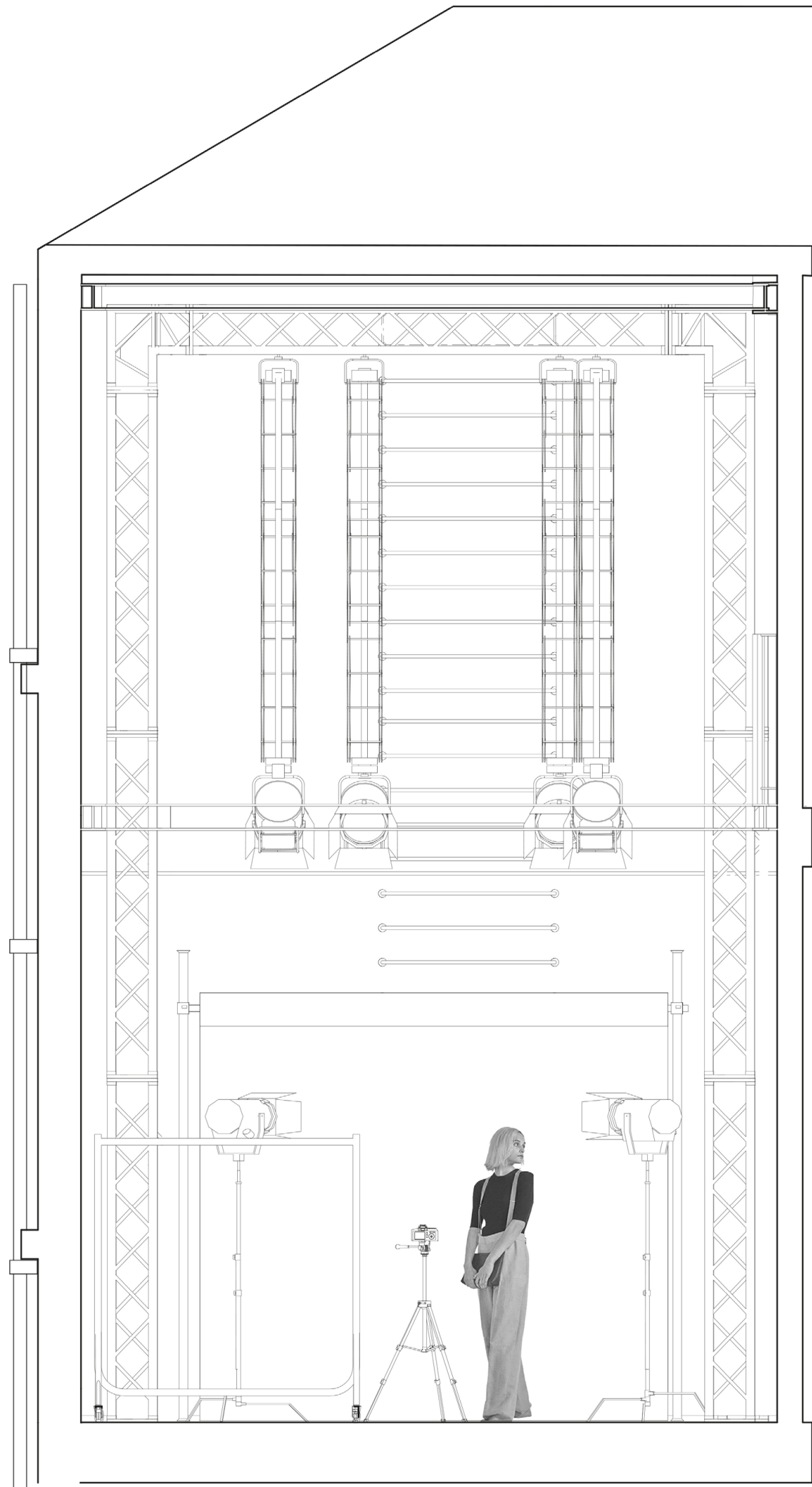
Many features that make a building more sustainable, such as reducing the amount of energy used by increasing the amount of natural light, also have a positive impact on the people working within the space. This is why I have chosen to focus on using features that will make my proposal more environmentally sustainable, whilst also making design decisions with the users at the forefront of my mind.

I focused specifically on utilising natural light, creating thermal comfort, increasing air quality, and biophilic design, which I found from my research paper on sustainable office design are the areas where sustainability and creating a healthy office environment for workers overlap the greatest.



THE HEART OF COLLABORATION

PHOTOGRAPHY STUDIO SECTION



There was a certain type of individual that I concluded could be central to many of the collaboration opportunities within the space; the photographer. Within any form of creating work, at the end there comes the need to document and share, which can be done through taking photographs of the model, or the large canvas painting, or even the piece of jewellery.

As they would be central to collaboration, I wanted the photography studio to be in a central location of my design and a place that people could pass by and even see what's happening within, so I placed this in the corner of the building where the two lengths of the building meet.

I created a double height photo studio that could be looked in on from the studio from a balcony on the second floor.

PHOTOGRAPHY STUDIO WITH SECOND FLOOR BALCONY





ENHANCING WELLBEING THROUGH BIOPHILLIA

CONCRETE PLANTER



For the courtyard space, I wanted to create some seating the incorporated a concrete planter filled with luscious tropical plants brighten up the space outside.

INDOOR BIOPHILLIA

Within the interior I looked at adding air-purifying biophilia which removes chemicals from the air that have negative effects on our health such as headaches, dizziness, eye irritation and much more. This is a render showing the final design of the office desk seating space, featuring large bookable desk spaces for computer work, with biophilia incorporated into the space.



COURTYARD SPACE WITH ADDITIONAL CAFE SEATING





