



The Smart House

Olivia Whiteley
Interior Architecture and Design

Research : What societal issues do elderly people currently face?

Findings from Age UK

1.6 million older people in the UK are living in poverty

- Enable integrated care and effective collaboration between different statutory and voluntary agencies; **developing 'Home from Hospital' schemes** and supporting services from the voluntary sector to prevent re-admission.

- Enable people to **manage their long-term conditions** and to live independently as long as possible, accessing community and voluntary activities and services, including practical help at home and cultural activities to enhance wellbeing.

- Promote full age equality across Public Health, NHS and care services, ensuring that everyone is cared for according to their **health needs and not their age.**

3 in 10 people aged 54-74 and two thirds of the over 75's are not online

- Ensure older people are able to access joined-up information, advice and advocacy, across all sectors and the community.

- Work in partnership across statutory and voluntary sectors and with communities to ensure that **everyone who is entitled to extra support actually receives it.**

- Work in partnership with banks and other services to provide face-to-face facilities in the community, promote **digital inclusion** and ensure older people can **benefit from online savings.**

25,000 older people die needlessly of cold each winter

- Include **ageing in their housing and planning strategies**, building to lifetime home standards.

- Provide a wide range of accessible and affordable quality housing options for older people to remain independent and connected to their communities.

- Provide ready access to **aids, adaptations and assistive technology** to help people maintain their independence at home as their needs change.

1 million older people haven't spoken to anyone in a month and 4 million say the television is their main form of company

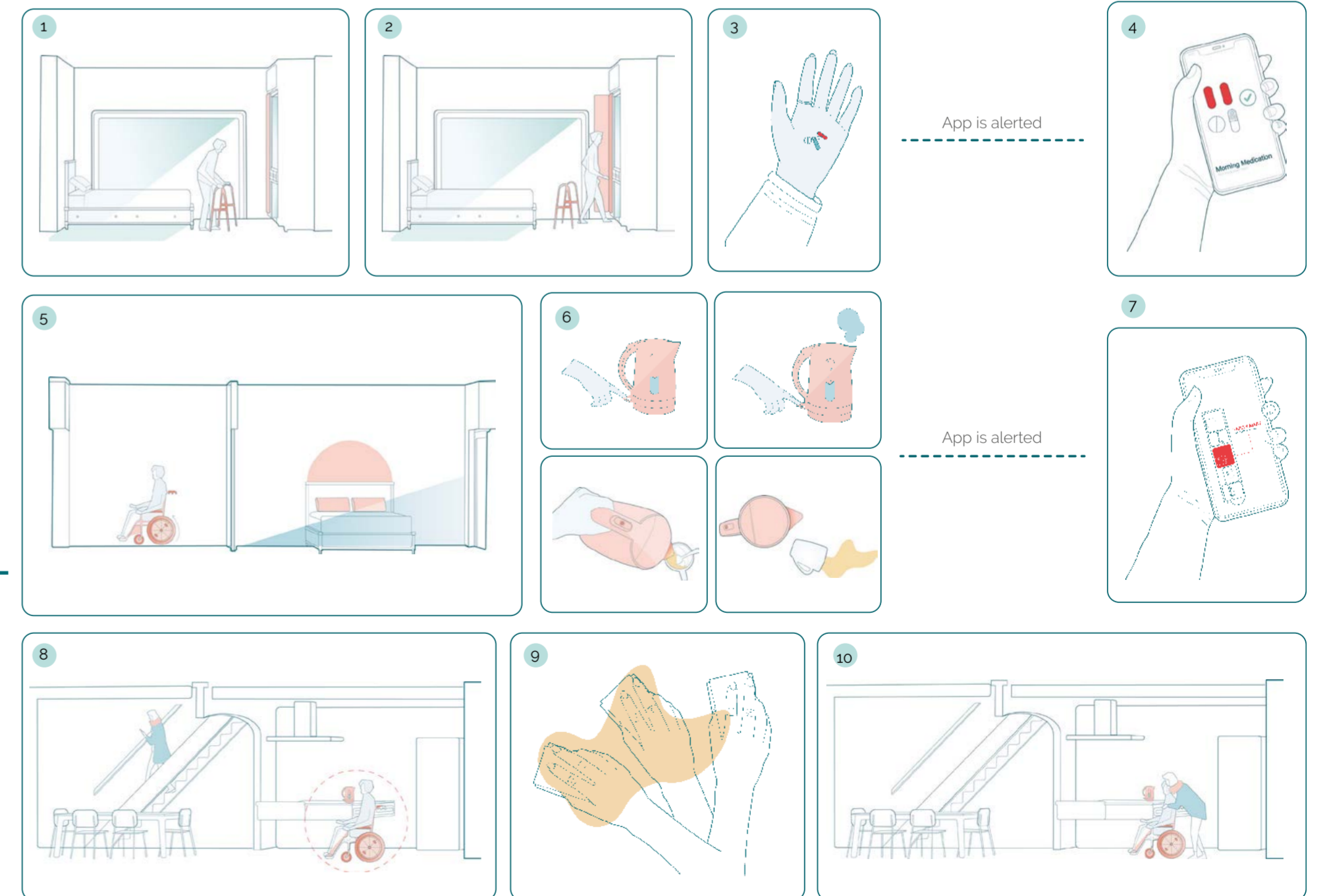
- Commit to ensuring that all aspects of planning, policy and practice consider the social inclusion of people in later life.

- Support **neighbourhood networks** which promote **social connections** and ageing well for a growing diversity of older people, including those otherwise unable to get out and about.

- Have respectful and inclusive attitudes towards later life, treating older people as full citizens, creating opportunities for **intergenerational contact** and mutual support, and **fostering positive attitudes to ageing.**

Research Question : 'How do people with age-based disabilities or diseases intersect with the built environment?'

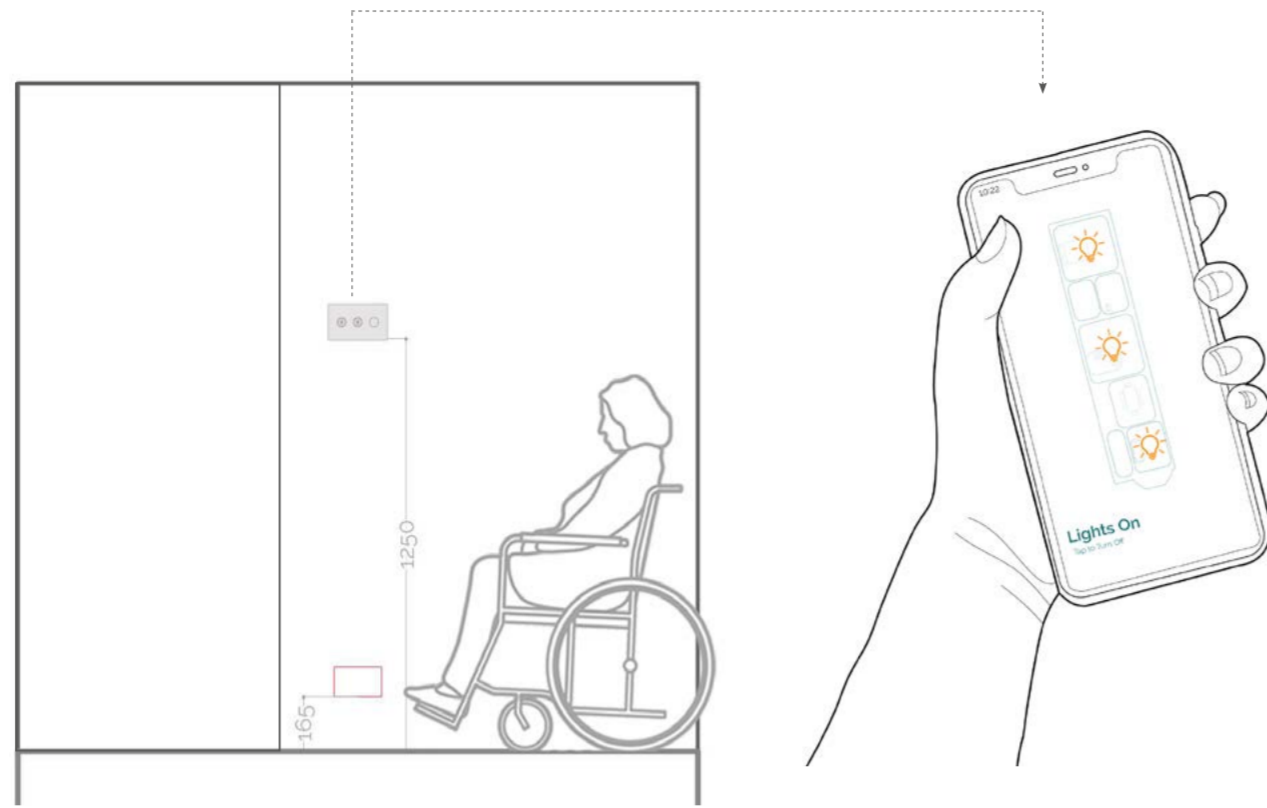
Throughout my proposal, I want to consider how an elderly person would navigate homes we see today, and how this could be modified to support an aging population. I'm taking on the point of view that an elderly person has moved in with her daughter and stepson to create opportunities for intergenerational contact, and support the idea of **living independently with support.**



Concept : Kick Plates to Open Doors and Lighting

Scale 1:50

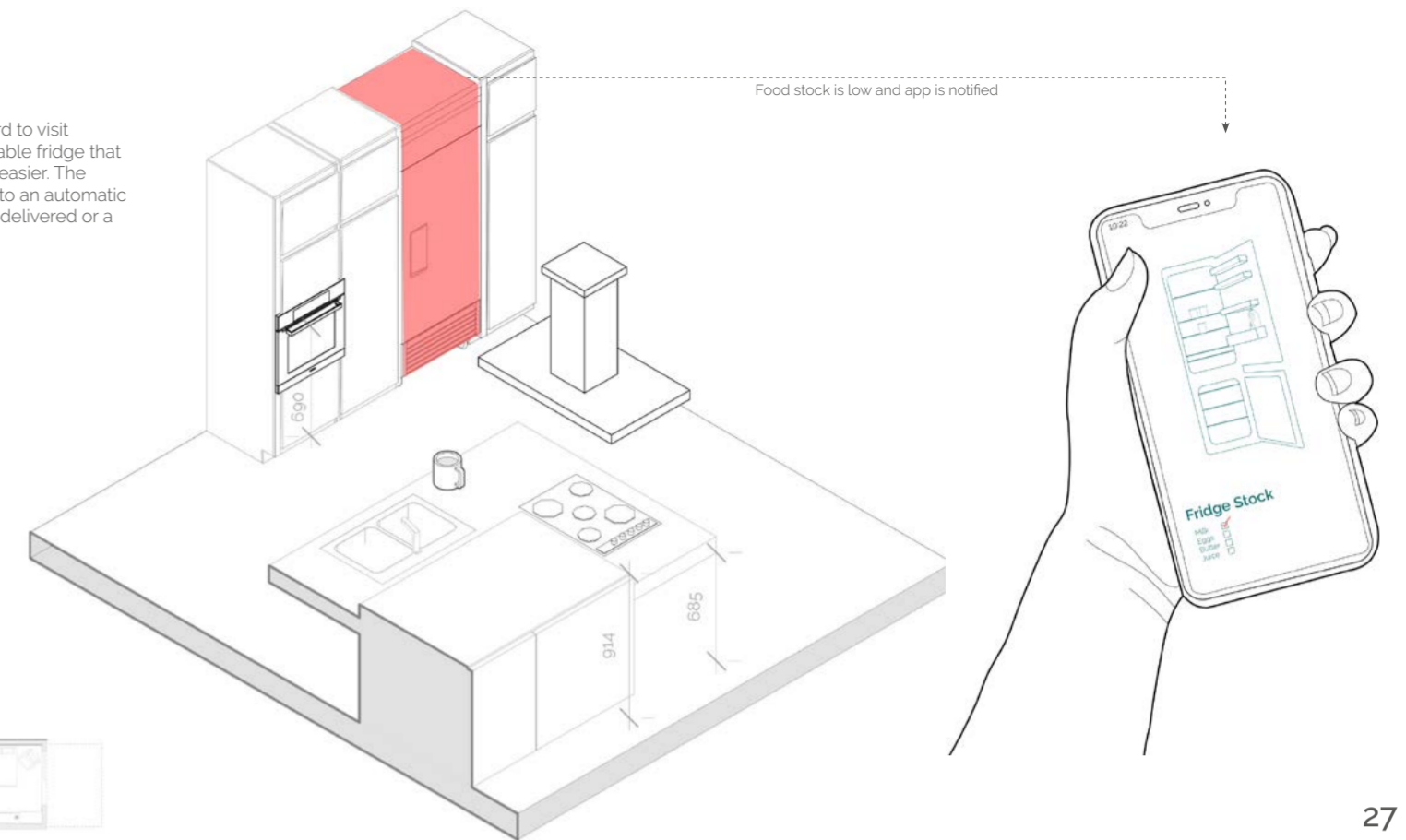
Incorporating a kick plate to automatically open sliding doors means moving through the space is easy, as the conventional doors can be difficult to use when in a chair. These kick plates sit at 165mm, which is naturally where the feet sit in a wheelchair. Light switches are placed at 1295mm, which is a natural forward reach position. To be environmentally conscious the app can be used to view which lights are switched on, and can be turned off by phone.



Technical : Refillable Fridge

Scale 1:50

Food shops and large supermarkets can be hard to visit whilst alone, or if you're without a car, so a refillable fridge that monitors food stock makes independent living easier. The fridge monitors when food is down and adds it to an automatic shopping list on the app, meaning food can be delivered or a carer can make the trip.



Concept : Smart House Elements

Scale 1:100

To illustrate how technology and our sense of home can intertwine, assistive technology has been incorporated into the space to ensure that the elderly resident can live both safely and independently. These elements would work side by side with the home app, meaning vulnerable elderly residents can be monitored if their safety is at risk, and give that peace of mind to their carers.



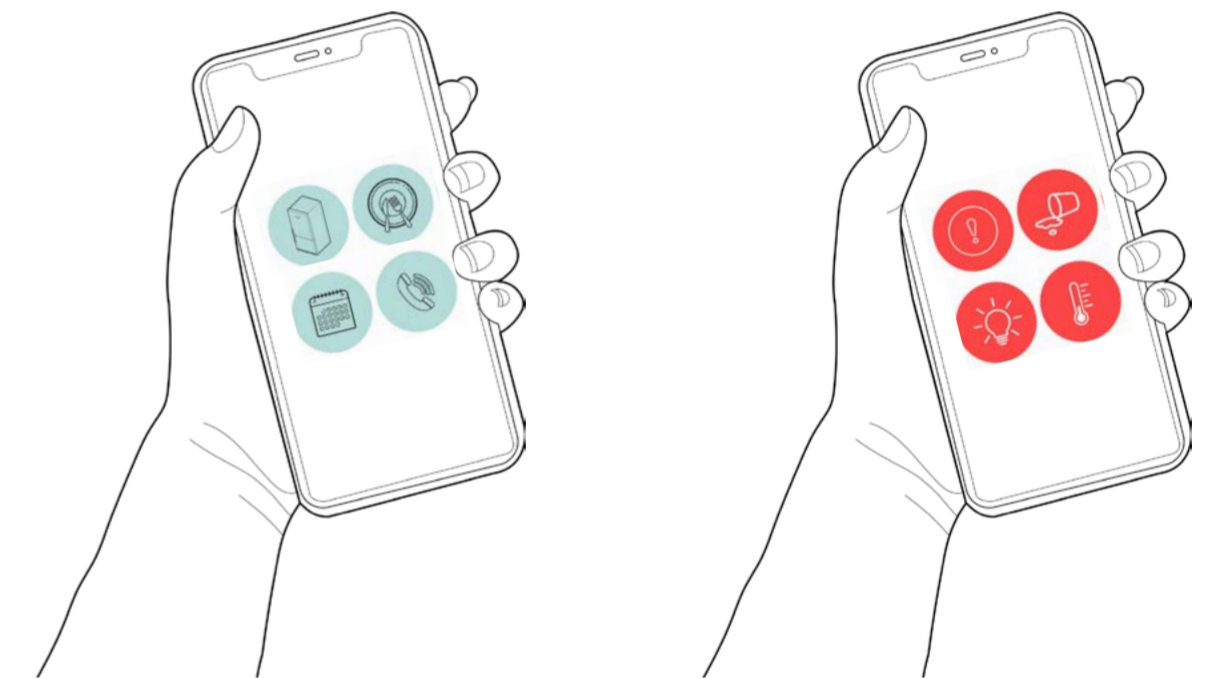
Key

- 1 Automatically Locking Doors
- 2 Kick plates to open sliding doors automatically
- 3 Temperature sensitive surfaces
- 4 Smart Refill Fridge
- 5 Heat Regulated Shower
- 6 Home from Hospital storage



Concept : The Smart App

As technology progresses and more of the world become virtual, it's become hard for the elderly community to access resources available to them. With 3 in 10 people aged 54-74, and two-thirds of the over 75's not being online, integrated technology and assistive smart spaces can ensure that the elderly population can live independently for longer.



Provisional Line

The app manages aspects like appointments, user friendly social media platforms and is a way of tackling isolation and loneliness. This would be a place where an elderly person could access resources from local councils and charities like Age UK, as well as more day to day activities like restocking the fridge.

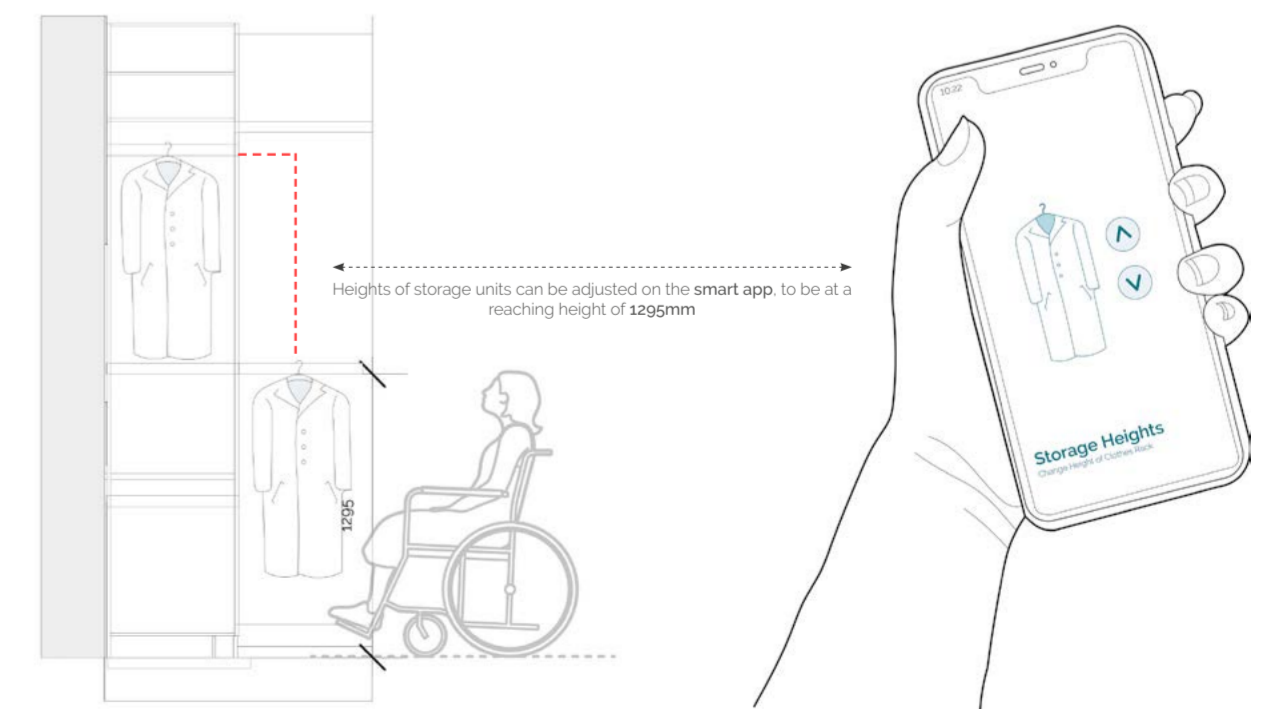
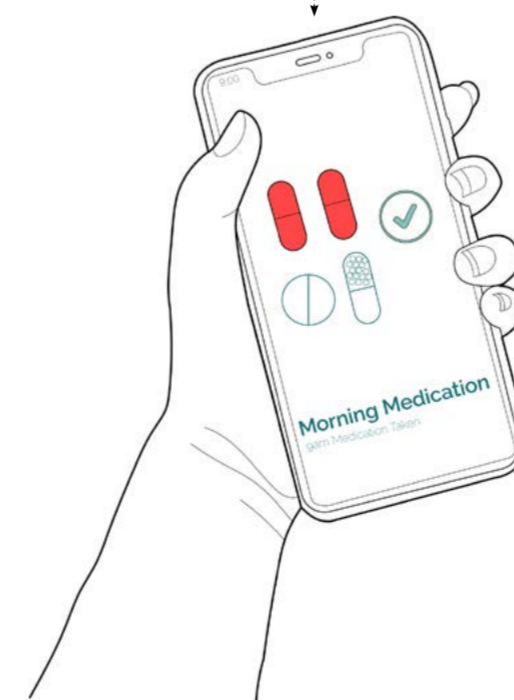
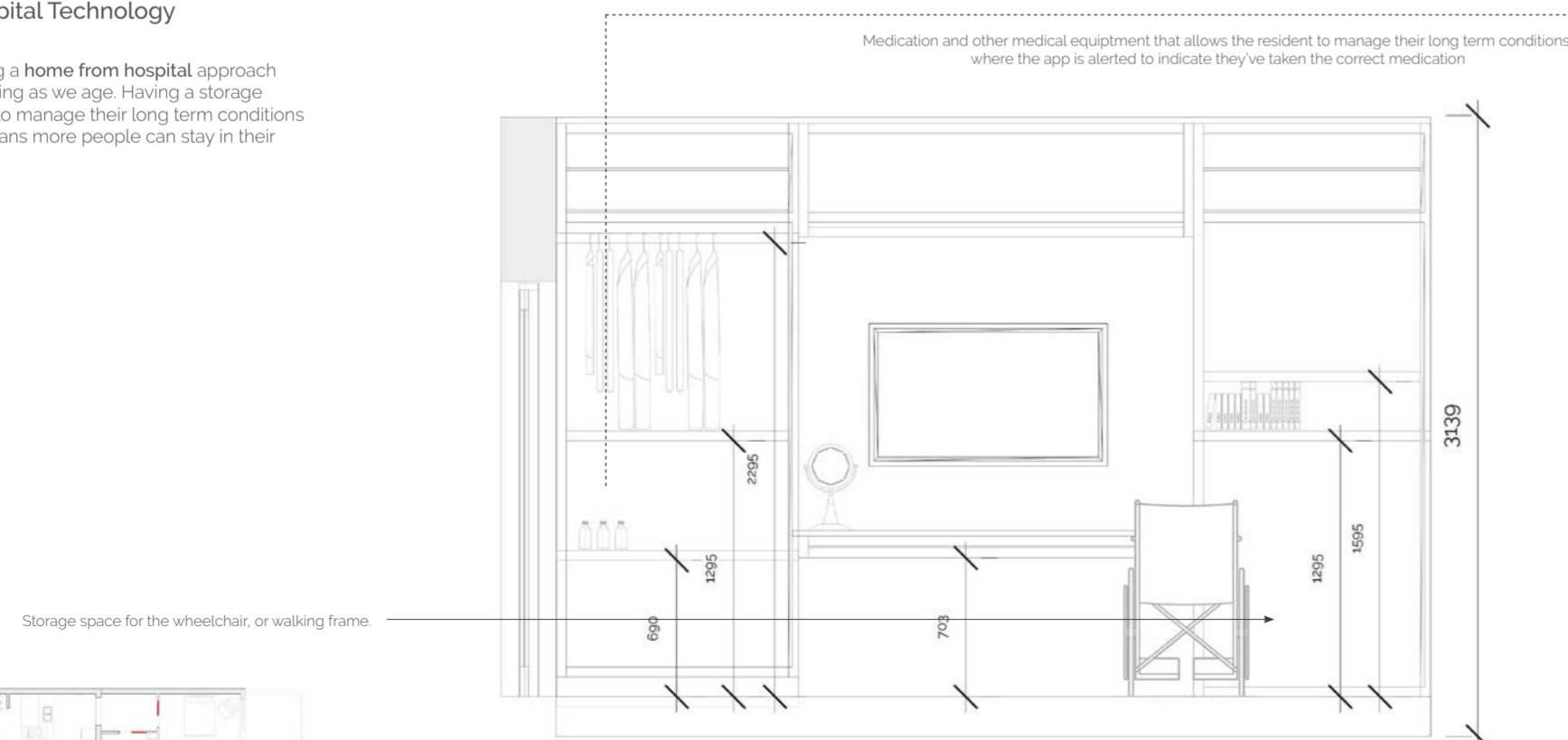
Safety Line

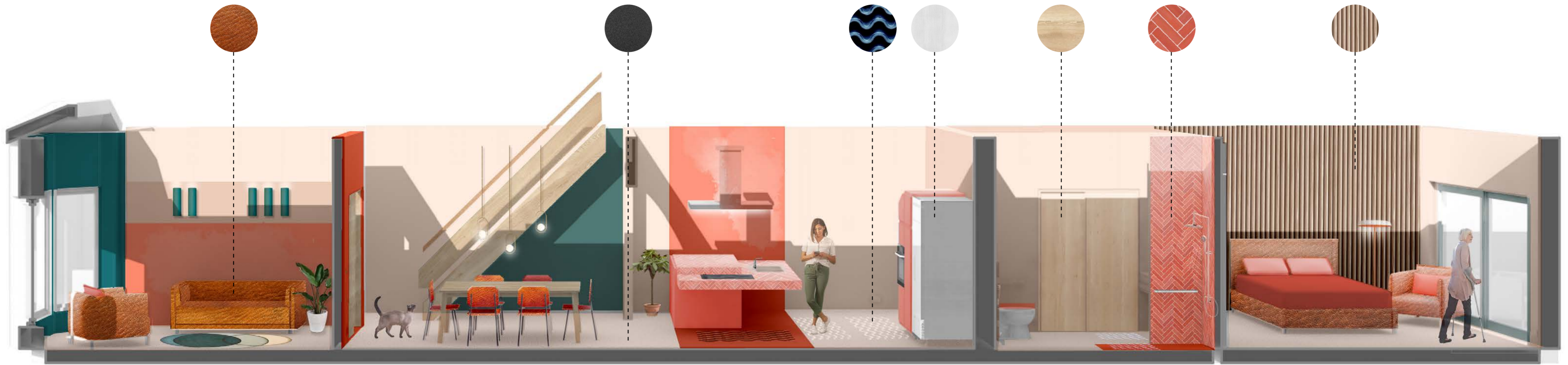
Taking a home from hospital attitude, this ensures that both elderly resident and carer have the peace of mind knowing that their home is safe. Monitoring trips and falls of the elderly resident, and identifying when appliances are turned on, means that accidents that could be potentially detrimental are prevented. You can also change the temperature and lighting of the space.

Technical : Home from Hospital Technology

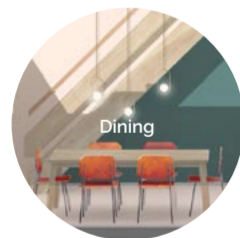
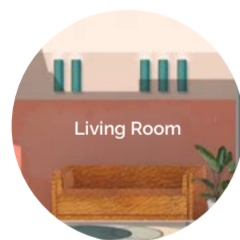
Scale 1:50

A sense of independence and taking a home from hospital approach is a contributing factor to our wellbeing as we age. Having a storage space that allows an elderly citizen to manage their long term conditions independently and comfortably, means more people can stay in their homes as they age.



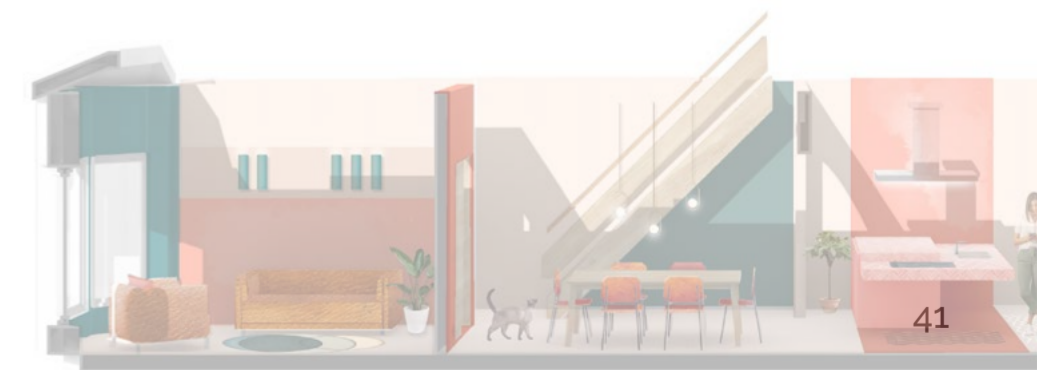
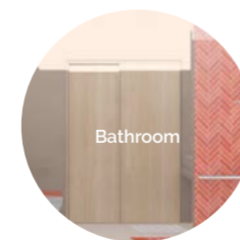
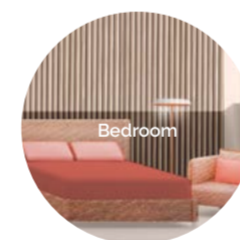


Furnishing : Furniture Plan
Ground Floor



Appliances : Future Facility Concept Apartment

For an elderly person, conventional appliances we use day to day may seem overwhelming and confusing. Taking Future Facilities Concept Apartment and implementing appliances that are simplified for an elderly audience allows the user to continue to live independently. This would be used for elements like kettles, dishwasher, oven and washing machine.





Furnishing : Furniture Plan

First Floor

