



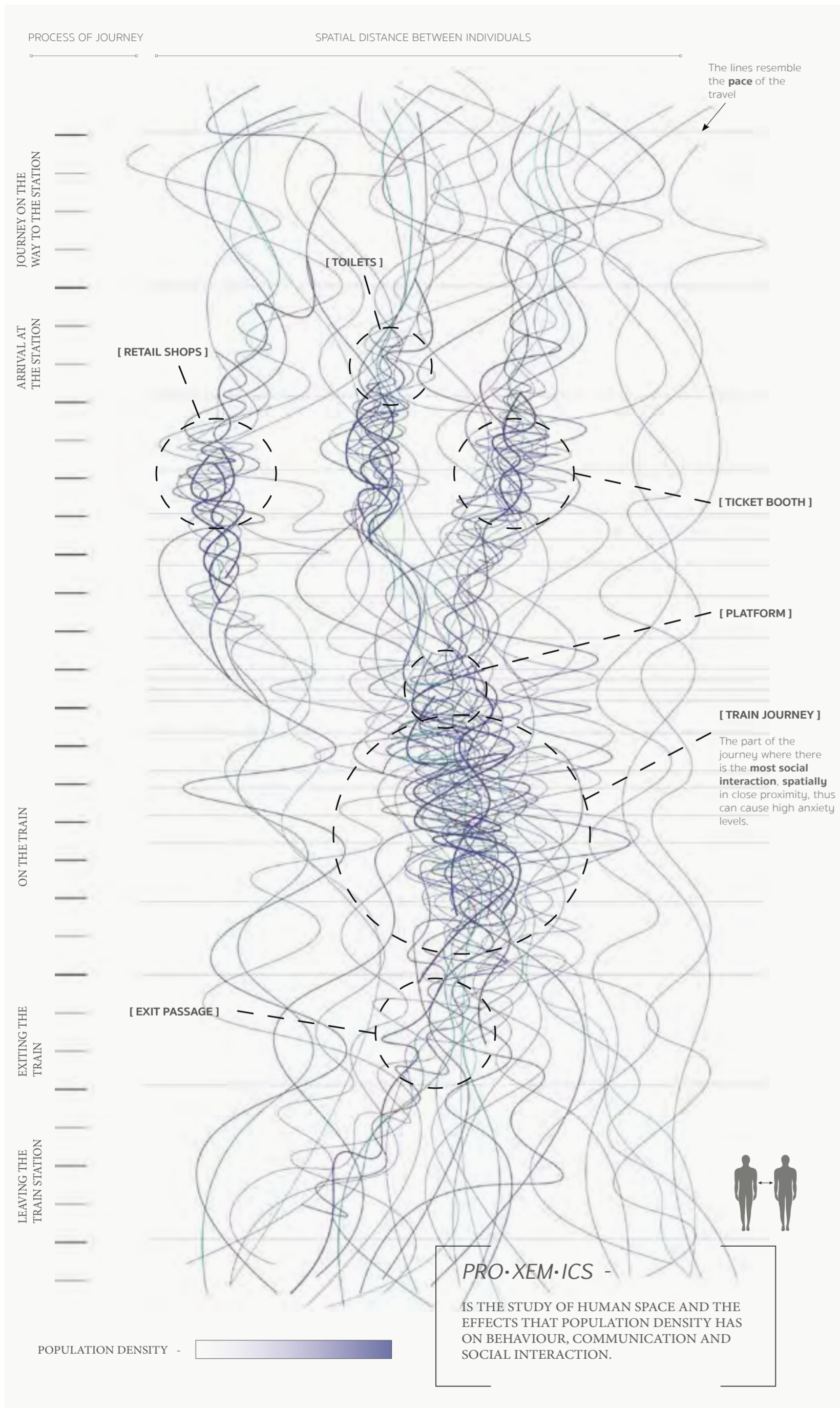
# THE 'WATER BREWERY'

BY OLIVIA CARTWRIGHT



A visual showcasing the **outside context of the Ashiyu** amongst all the mist, which is created from the hot water inside and the colder air surrounding it. It also captures the **spirit** of the atmosphere for those who are not specifically using the Ashiyu, but what it can transform the space into with its presence.





## 'BLUE MIND' THE EFFECT OF WATER ON THE HUMAN PSYCHE

THE EFFECT WATER HAS, PSYCHOLOGICALLY, ON INDIVIDUALS HAS BEEN WIDELY INVESTIGATED BUT HAS BEEN PROVEN TO HAVE A POSITIVE INFLUENCE ON MOOD AND PROVIDES A SOLICE FOR PEOPLE LIKE A FORM OF MEDITATION.

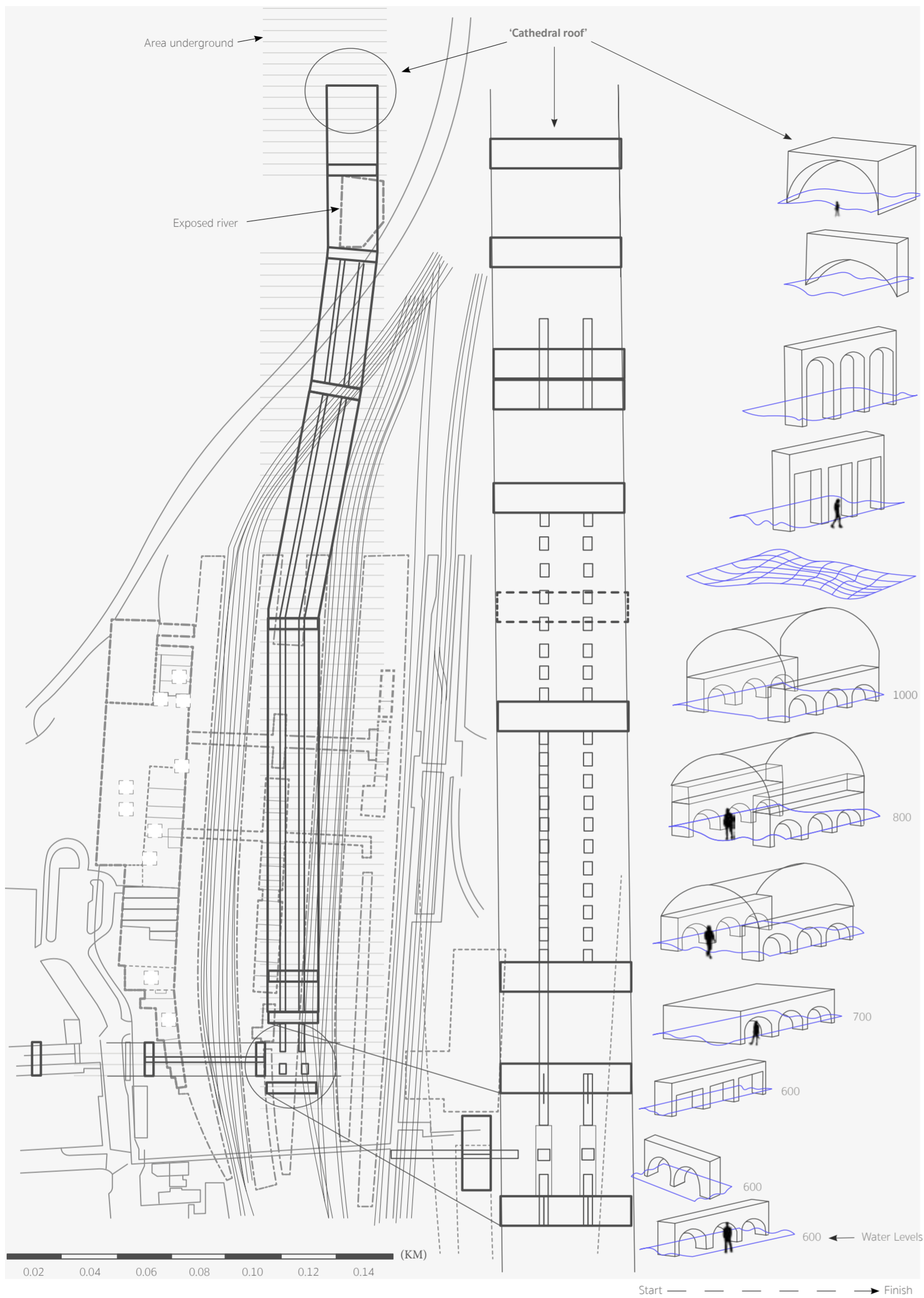
The key element of this project is the use of **water** - the health benefits physically but mainly psychologically. The train station is a very **stressful** environment, with a high density of individuals occupying the space for long periods of the day. Particularly for **socially reclusive individuals** (for example people who isolated due to COVID-19, or withdrew themselves by choice), approaching a space like this is very intimidating. Following the '**blue mind**' science of introducing water into a space, to **positively influence people's mood**. I introduced water into the design, in addition to using **cathartic form** of water (Water therapy) to decrease stress and prepares individuals for the morning commute.

The design of the space **changes** the **fast pace** of the train station into a more **calming environment** and can provide some sort of '**sanctuary**'. The site functions as a **destination** for individuals who would like to go specifically for the water therapy but also is in junction with being able to **experience** this space (and it's functions) and **still continue on the train journey**.

Photographs of the **Megatron channels** and the **Cathedral Roof** which lies directly beneath Sheffield train station.

An illustration looking at population density within different locations of the train station at different periods of time during the process of travel to **identify periods of stress for socially-reclusive individuals**.





An illustration analysing the megatron and showcasing the change in scale of the arches and water within it.



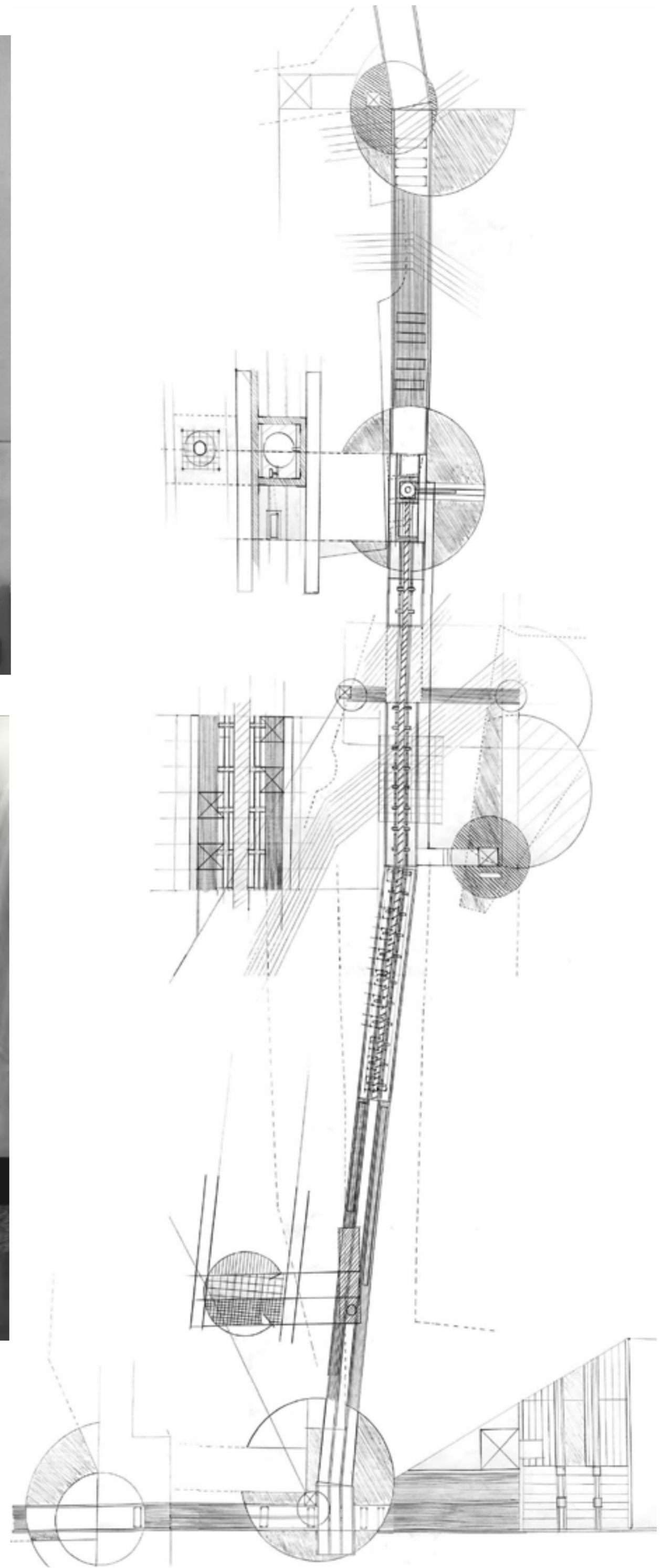
An image of myself hand rendering the drawing on the right. This photograph gives an indication on the large scale of the drawing - for reference my height is 152cm.



A photoshop image focusing on the **cathedral roof section** of the megatron, looking at the influence of introducing a **skylight** into the space.

## UNDERSTANDING/ADAPTING THE SITE FOR USERS - **THE MEGATRON**

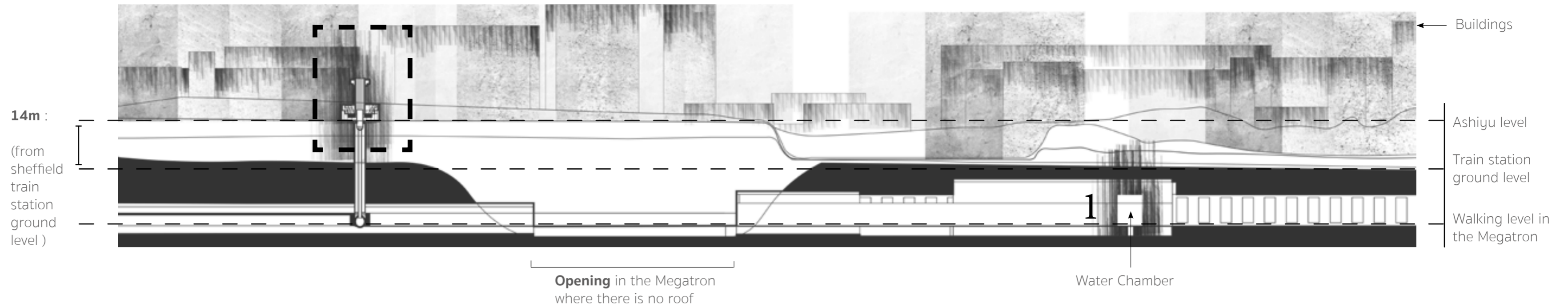
The **Megatron** is a large channel, formed by smaller arches and structures, which is **situated directly beneath Sheffield Train Station**. There is a **large dome structure** within this space, called the **'Cathedral Roof'** which will act as the **main site** location where my proposal is situated. It is made of **Gregory brick** (or Sheffield brick). These tunnels and arches were **formed during the Victorian Era** to 'hide' the natural rivers that flow throughout central Sheffield and enabled human intervention into the space.



A pencil drawing, which forms a floor plan allocation, where geometric shapes aid in planning the space within the megatron and other extentions.



An abstract section looking at the positioning of the **Ashiyu (2)** relative to the Megatron underground.



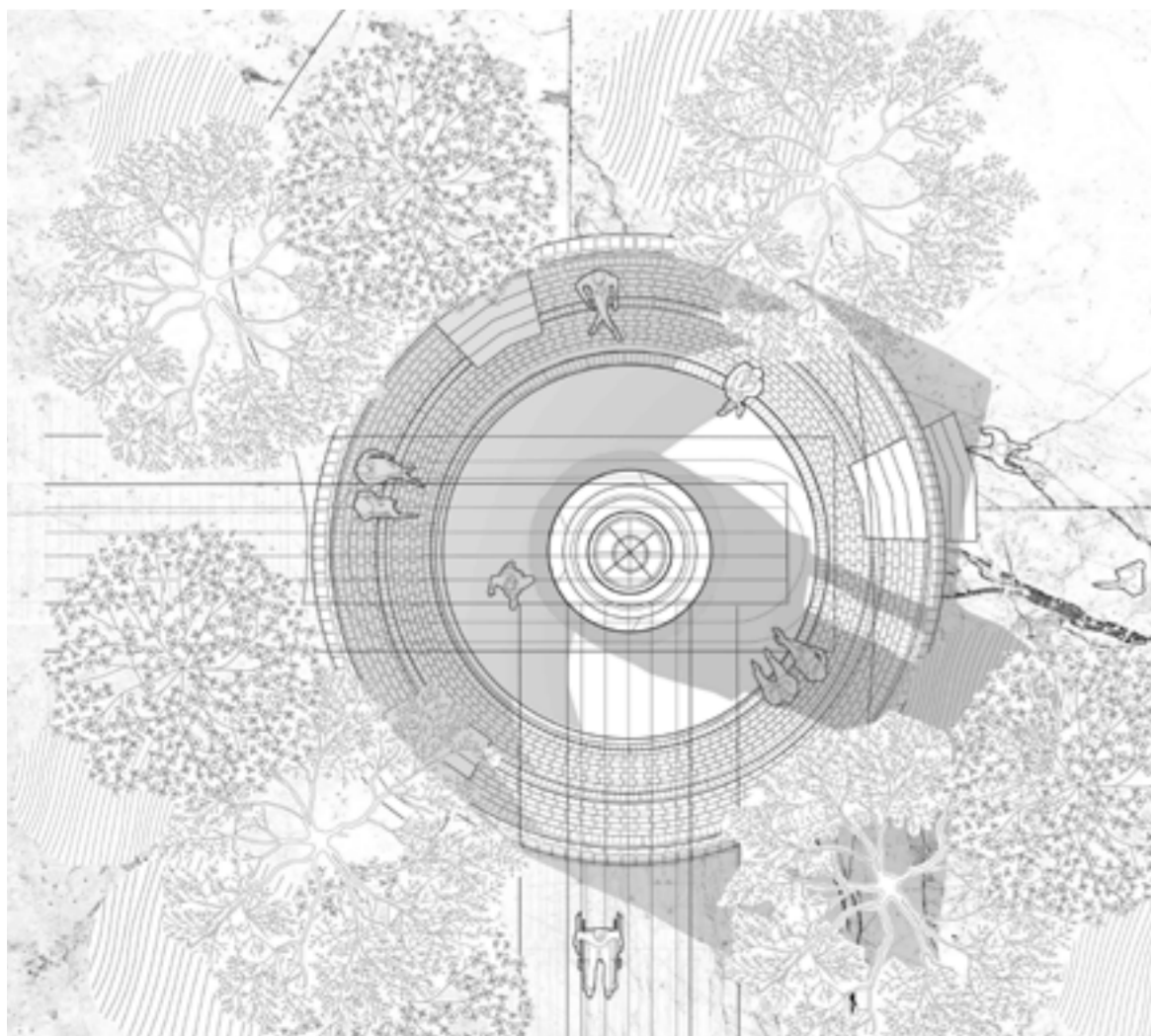
## ASHIYU + CHIMNEY - PROPOSAL

THE OUTLET FOR THE STEAM COLLECTED FROM THE WATER CHAMBER, WITHIN THE MEGATRON.

An **Ashiyu** is the Japanese word for a form of an onsen **'foot bath'** with the use of natural elemental materials. Steam from the 'Water Chamber' in the Megatron is rerouted, collected, stored and released from a **steam accumulator**. This mechanism **heats** the **water** in the Ashiyu (as it is situated directly beneath the Ashiyu). And also periodically releases steam through the chimney at certain points of the day.



An image showing the floor plan of the Ashiyu, particularly looking at the detail on the brick patterns which forms the shape of the design.



A visual showcasing the atmosphere inside the Ashiyu. The chimney, where the steam is released, is situated in the centre where people can view it. As the **water is heated**, a **layer of steam blankets the space**.





A visual inside the Megatron, within one of the channels. It focuses on the influence of light within the space and shows the walking 'corridor' where people walk on **glass flooring** where the exposed natural river flows beneath. On the left of the image, the large copper pipe (containing the hot water) is subtly shown as it travels down the adjacent archway corridor. Steam is also slightly present here, as when hot water is consumed further down the channel, steam is released into the space. The time of day this visual is representing is **10am**.