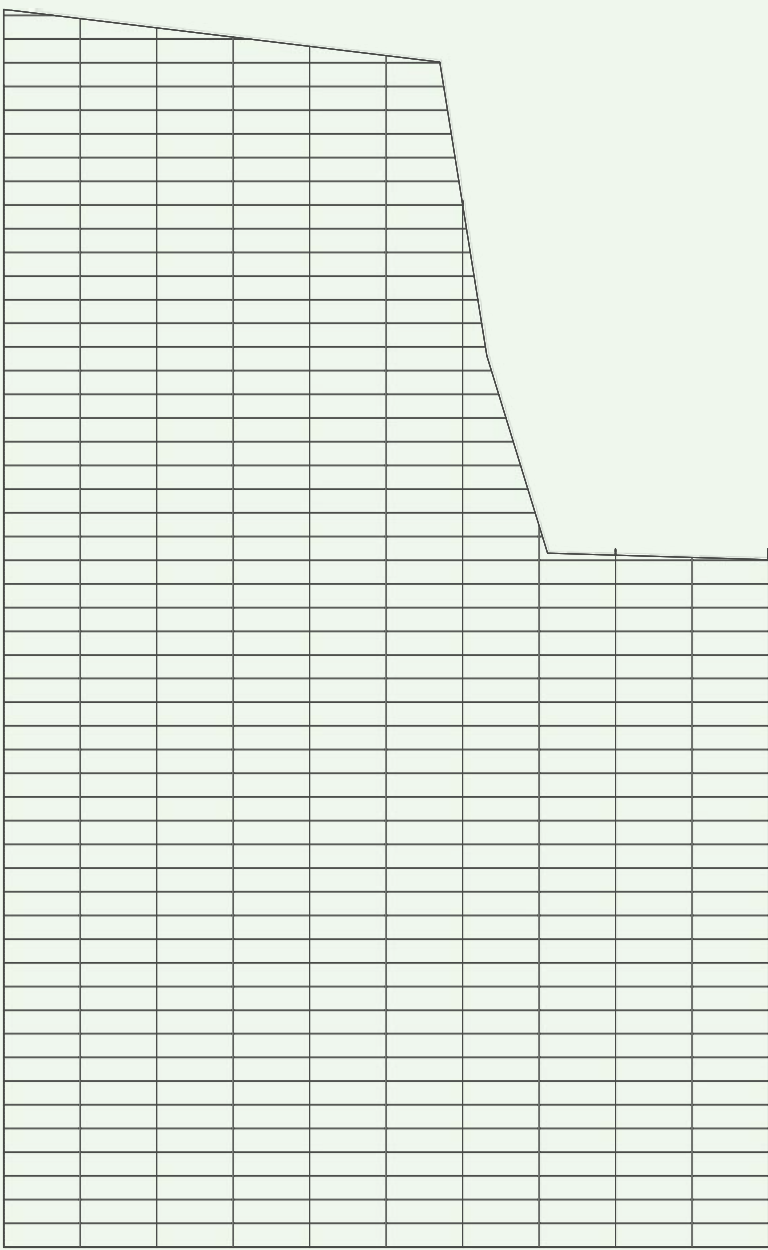


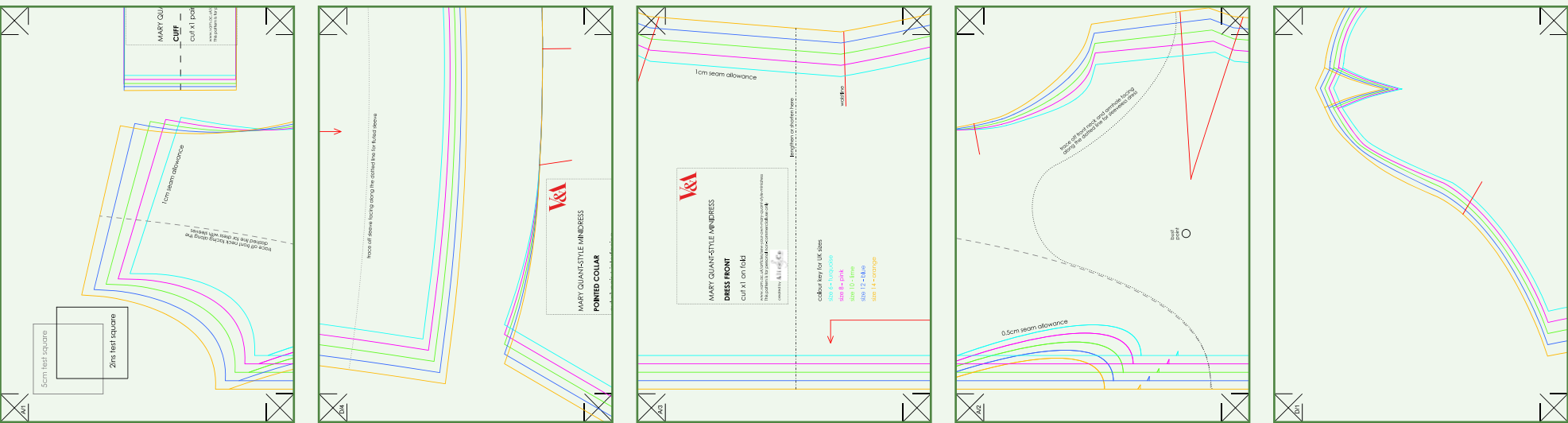
Front Bodice Pattern Piece



Main Canopy Plan

Pattern Pieces

The rules, directions and shapes of sewing patterns often bear a resemblance to architectural drawings. This is particularly true here, as the shape of the canopy mirrors the shape of the front bodice piece.



The Dress

The conceptual exploration of this project involved sewing a dress. Using a Mary Quant pattern and materials sourced from a number of markets around the UK, the shape, design, and construction of this piece all influenced the final proposal.

VICTORIA STATION: A LOST ICON

Sheffield Victoria Station, located North of the city centre, was opened in 1851 linking Sheffield to Manchester. It sits high above the city, upon the Wicker arches. Despite its 'busy history, it was closed early in 1970, following the Beeching Cuts of the 60s. It now sits empty and derelict, and is a forgotten landmark of the city.

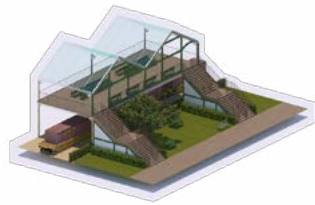
This project is inspired by that history, and its' final working decade, the 1960s.



This proposal transforms this brownfield site into a vibrant inner city market, inspired by the community and tradition of markets that were once found in every city, and that were particularly popular in the 1960s.



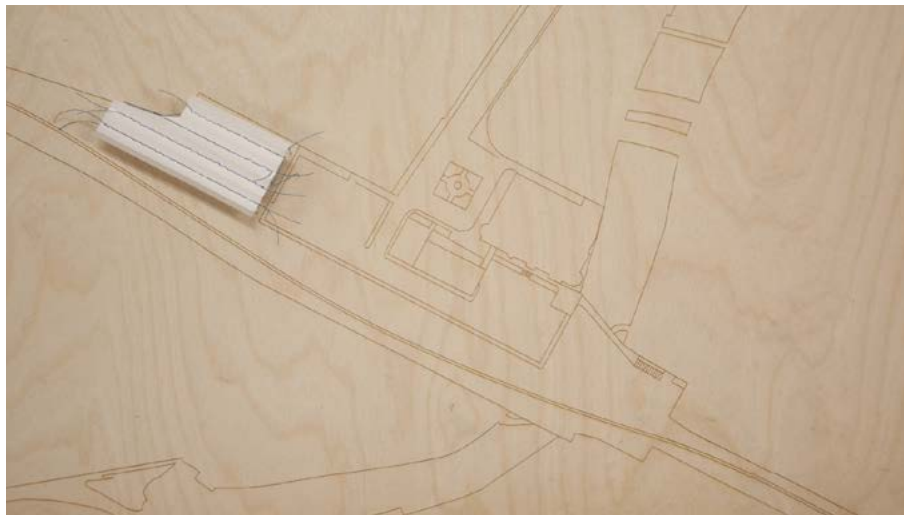
The two restored access points: a pedestrian staircase from Wicker, and the aptly named Victoria Station Road.



On this site there will be:
1. A train-spotting platform
2. The main market canopy
3. A welfare unit.



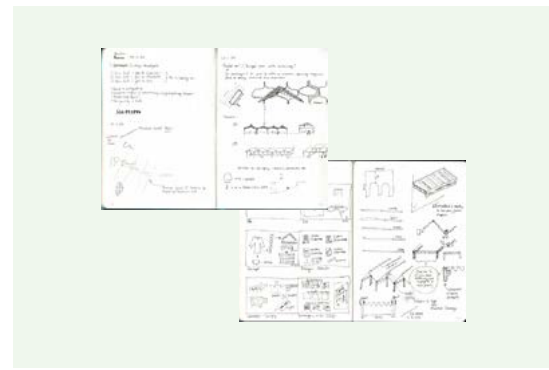
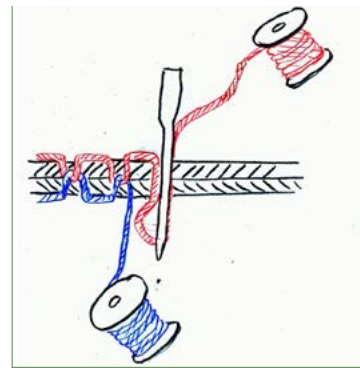
Primary Research
Personal and professional images from Tynemouth Market, a key precedent in this project. The scale and details of the station canopy are reflected in that of the market.



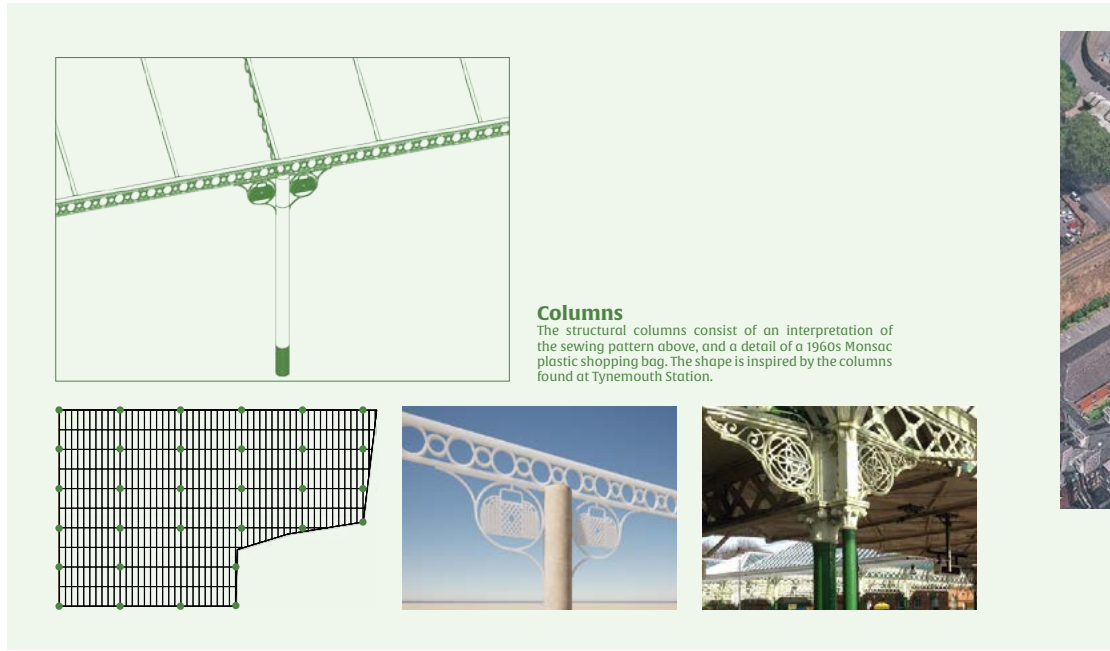
Site Model
A 1:1000 scale model of the main market canopy. Site is laser cut, and the canopy is made from folded layout paper, which is held aloft with sewing pins. The ironwork is represented by blue stitches sewn by an inherited 1960s sewing machine.

MIND THE MARKET

A collaborative model, designed to respond to the site. 3 people and 3 separate projects are represented by 3 distinct elements.



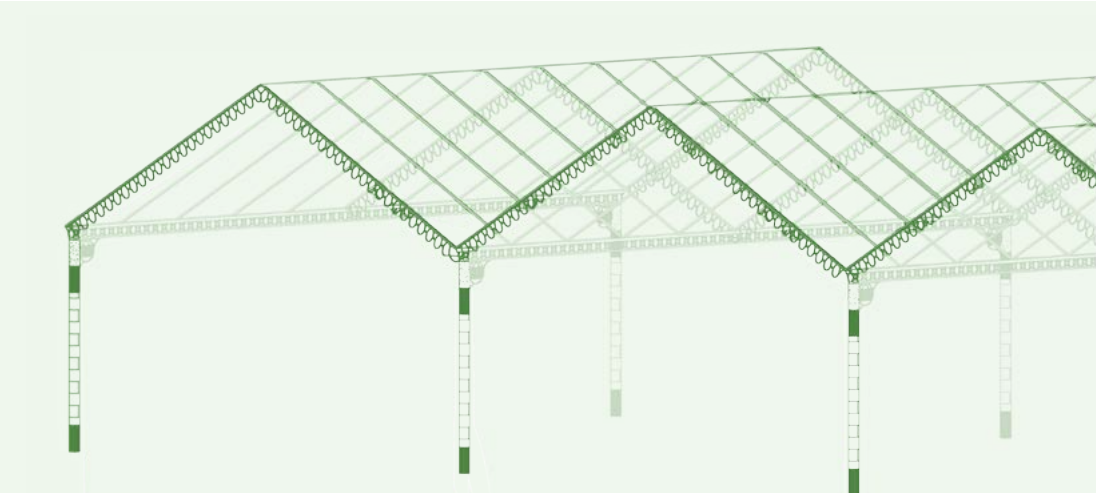
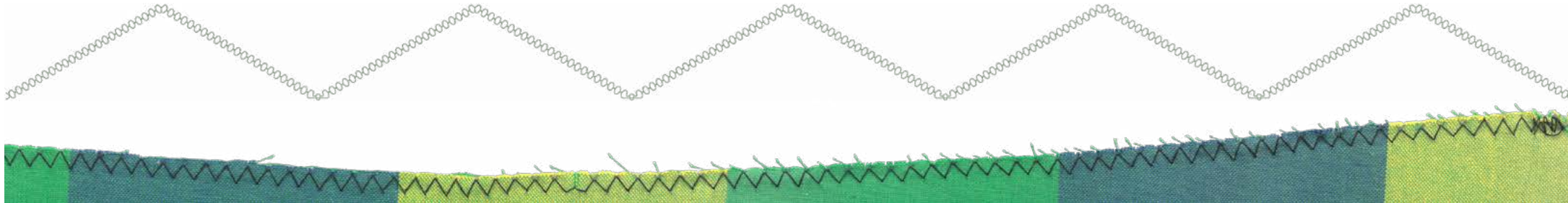
Sewing Patterns
This interwoven detail (left) takes inspiration from both 1960s geometric patterns, and the structure of a sewing machine stitch. It will go on to form the basis of the ironwork detailing on the main market canopy.



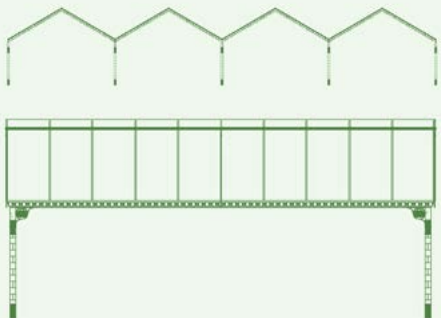
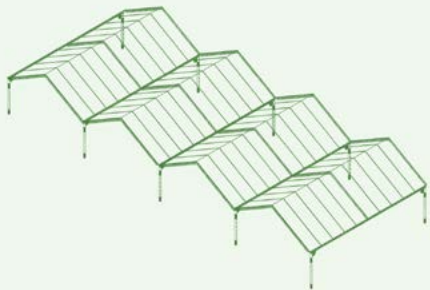
Columns
The structural columns consist of an interpretation of the sewing pattern above, and a detail of a 1960s Mansac plastic shopping bag. The shape is inspired by the columns found at Tynemouth Station.



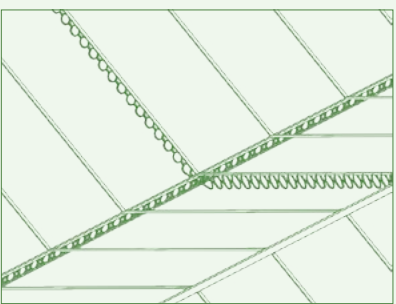
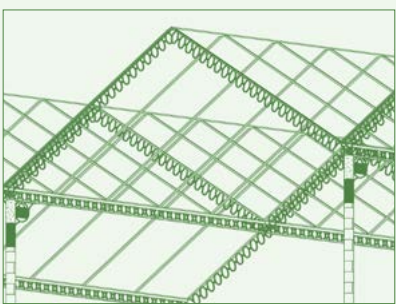
When overlayed onto a map of the site, the front dress pattern mirrors the shape of the area, and inspires the shape of the main canopy.



The Canopy
With a total covered area of around 2500 square metres, this expansive space is designed primarily to house a market, though is also suitable to host a range of other functions.



Isometric, Front Section, and Side Section.



Ironwork Details



Train-spotting Platform
An elevated platform, drawing shapes and materials from the enclosed platform bridge at Tynemouth Station. The added height allows for an uninterrupted view over the North of the city centre, and benches allow visitors to sit sheltered away from the business of the main canopy.

Market Collage

This physical experiment evolved into a digital render of the space, with users wandering freely around the stalls. Magazine clippings represent the variety of wares that may be sold.



This project was designed to be up to interpretation and able change and adapt depending on different events and needs. It is a space for the people of the city, helping them to create and to share creations, provide a livelihood for themselves, find new friends, and get involved in their community.

I have seen that local markets encourage community and socialisation, as well as providing new opportunities for people who are seeking to expand their horizons or branch into new areas. I hope that a space such as this can provide these opportunities to connect people in a meaningful way.