

SELLERS WHEEL



THE BRIEF

Within the city of Sheffield many people live their lives living and working with very little access to nature, being around nature can generate many positive emotions, such as calmness, joy and creativity and is known to stimulate the mind for better concentration.

Although Sheffield is well known for its great green spaces in and around the city and being located so close to the peak district, unfortunately much like most densely populated areas in the country and beyond, there is a lack of access to nature for most people throughout their daily routines.

For this project I wish to design a community living space that encompasses all the benefits individuals would get living in more rural areas but within Sheffield city centre. Researching led me to the concept of urban agriculture which is growing plants or raising farm animals within a city. I want to consider this within my design and create spaces for residents to grow their own food which also helps move towards future sustainability. Urban agriculture has the potential to enhance local ecosystems, attracting pollinators such as bees and birds that boost urban biodiversity, while providing more green spaces to help keep cities cool and improve living standards.



PASONA URBAN FARM- BY KONO DESIGNS



Tomato vines suspended over conference tables and broccoli fields in the reception are part of working life at this Japan office by Kono Designs.

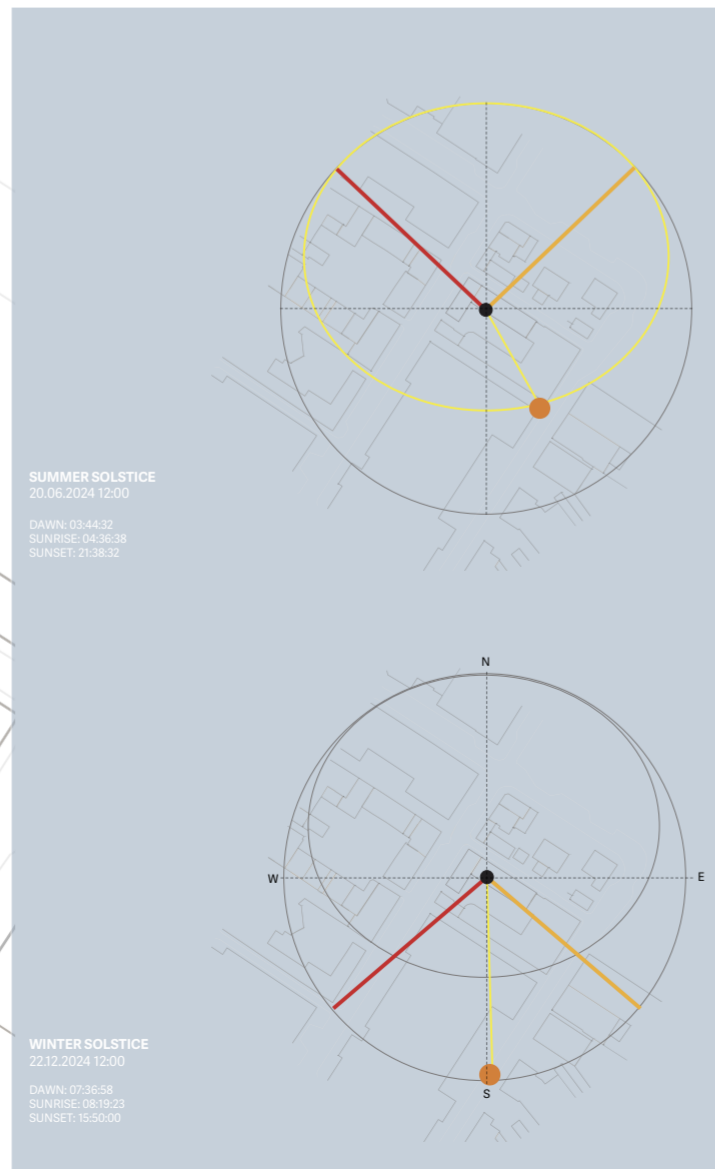
New York firm Kono Designs created the urban farm in 2010, in a nine-story office building in Tokyo to allow employees to grow and harvest their own food at work. Deeren spoke with company principal Yoshiaki Kono this week to hear more about the project.



SITE CONTEXT



SITE LOCATION



BUILDING INFORMATION AND HISTORY

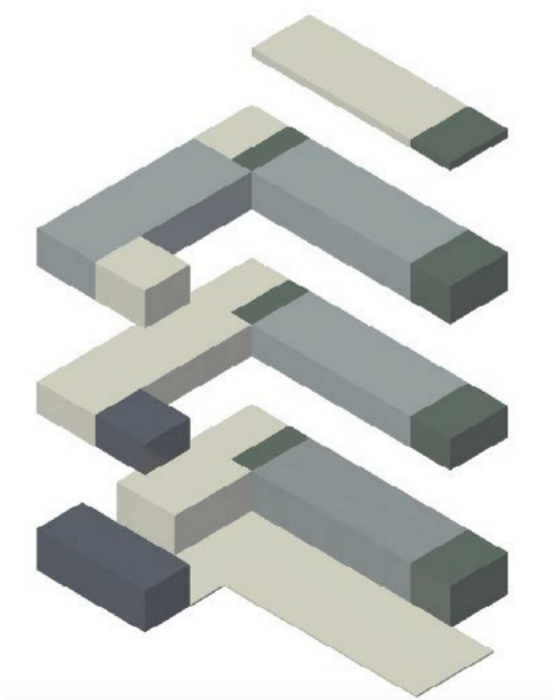
SELLERS WHEEL IS A GRADE-II LISTED 19TH CENTURY INDUSTRIAL COURTYARD SITE THAT SITS IN THE REGENERATED CULTURAL INDUSTRY QUARTER OF SHEFFIELD, A CONSERVATION AREA, POSITIONED JUST MINUTES ON FOOT FROM THE TRAIN STATION AND SHEFFIELD INTERCHANGE AND IS SURROUNDED BY A DENSELY POPULATED GROUP OF STUDENTS, PROFESSIONALS AND RESIDENTS. THE BUILDING ALSO SITS WITHIN SHEFFIELD HALLAM UNIVERSITY CITY CAMPUS.

SELLERS WHEEL IS A MEDIUM-SIZED PURPOSE BUILT CUTLERY WORKS BUILT IN THE LATE 19TH CENTURY. IT WAS IDENTIFIED AS A SPECIAL ARCHITECTURAL AND HISTORICAL INTEREST BY ENGLISH HERITAGE DURING A THEMATIC SURVEY ASSESSING THE BEST SURVIVING EXAMPLARS OF SHEFFIELD'S METAL MANUFACTURING AND METAL WORKING TRADES, DUE TO A SEVERE DECLINE IN THE INDUSTRY WITHIN THE CITY IN THE LATE 20TH CENTURY, SELLERS WHEEL IS AN IMPORTANT SURVIVOR.

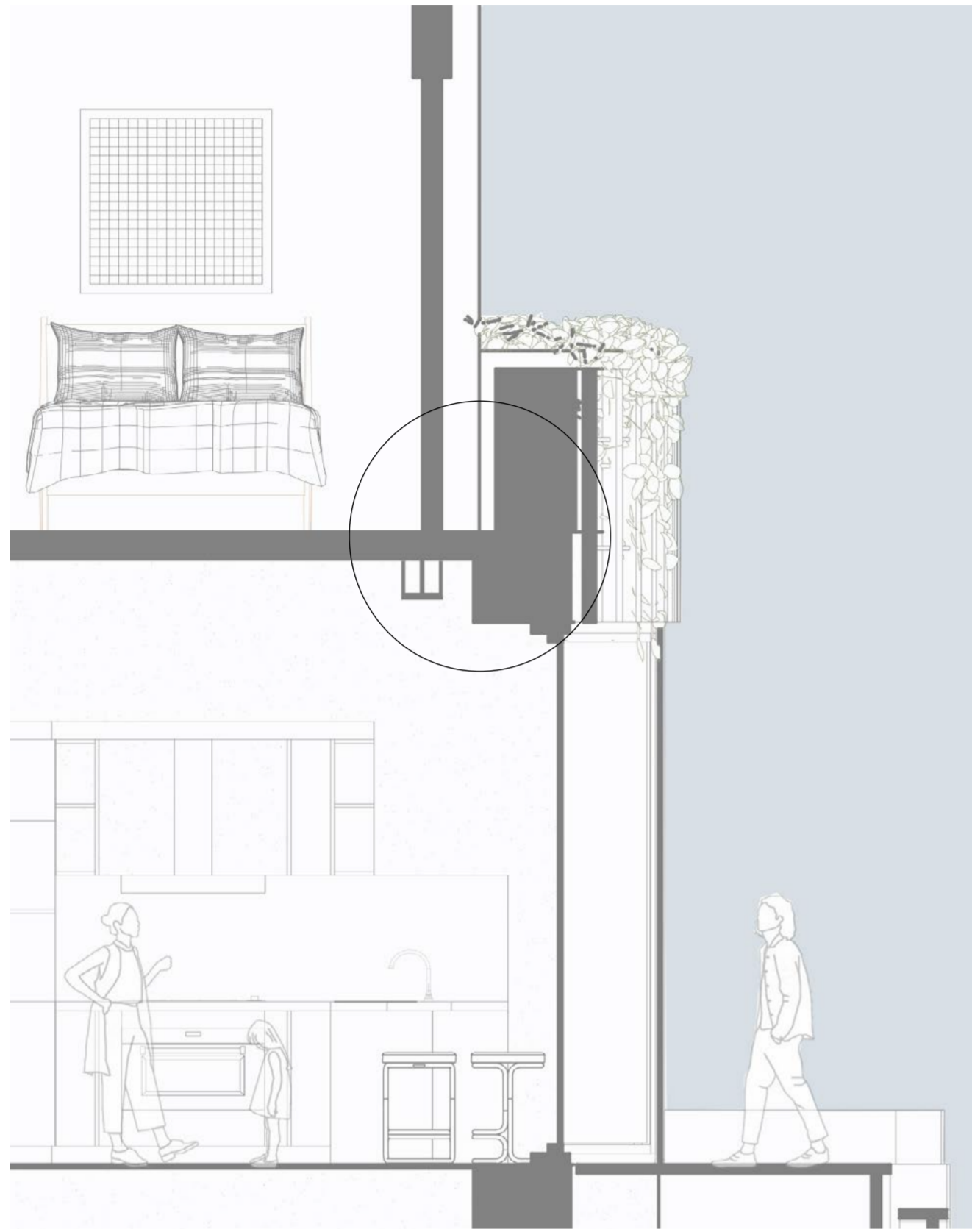
THE BUILDING CONSISTS OF 3 STORES THE GROUND FLOOR IS CURRENTLY OCCUPIED BY HANPER COFFEE WHICH IS AN INDEPENDENTLY OWNED CAFE FOUNDED IN 2011.



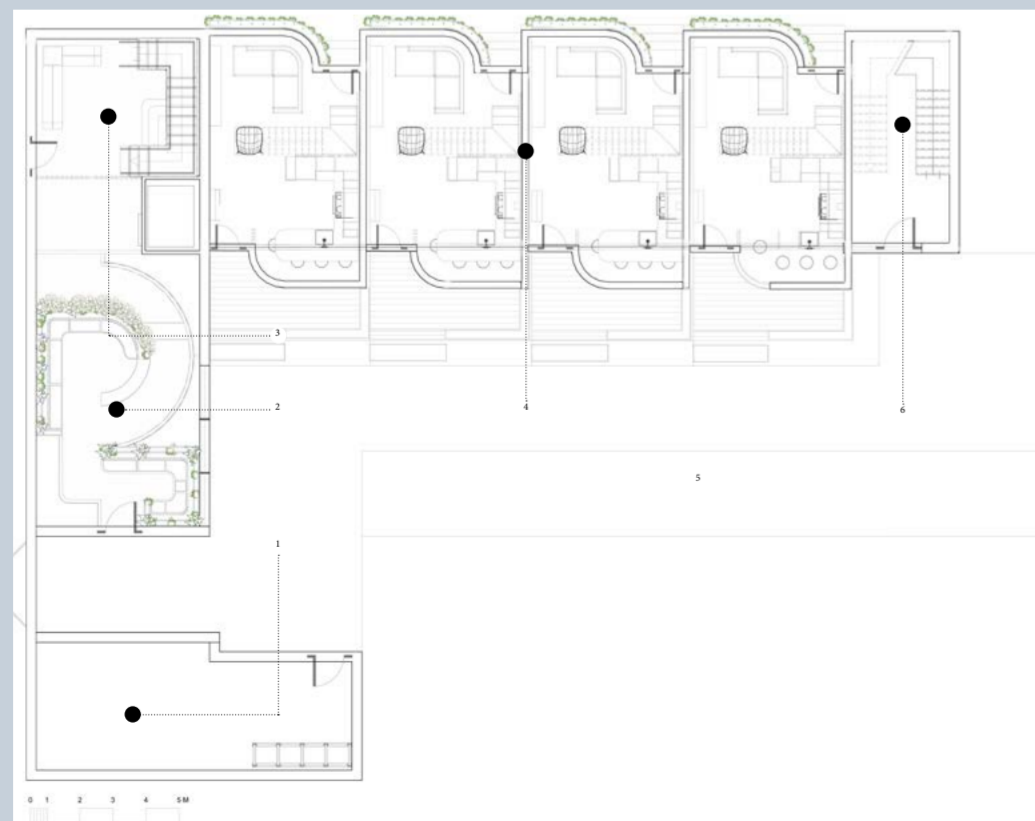
PLANNING



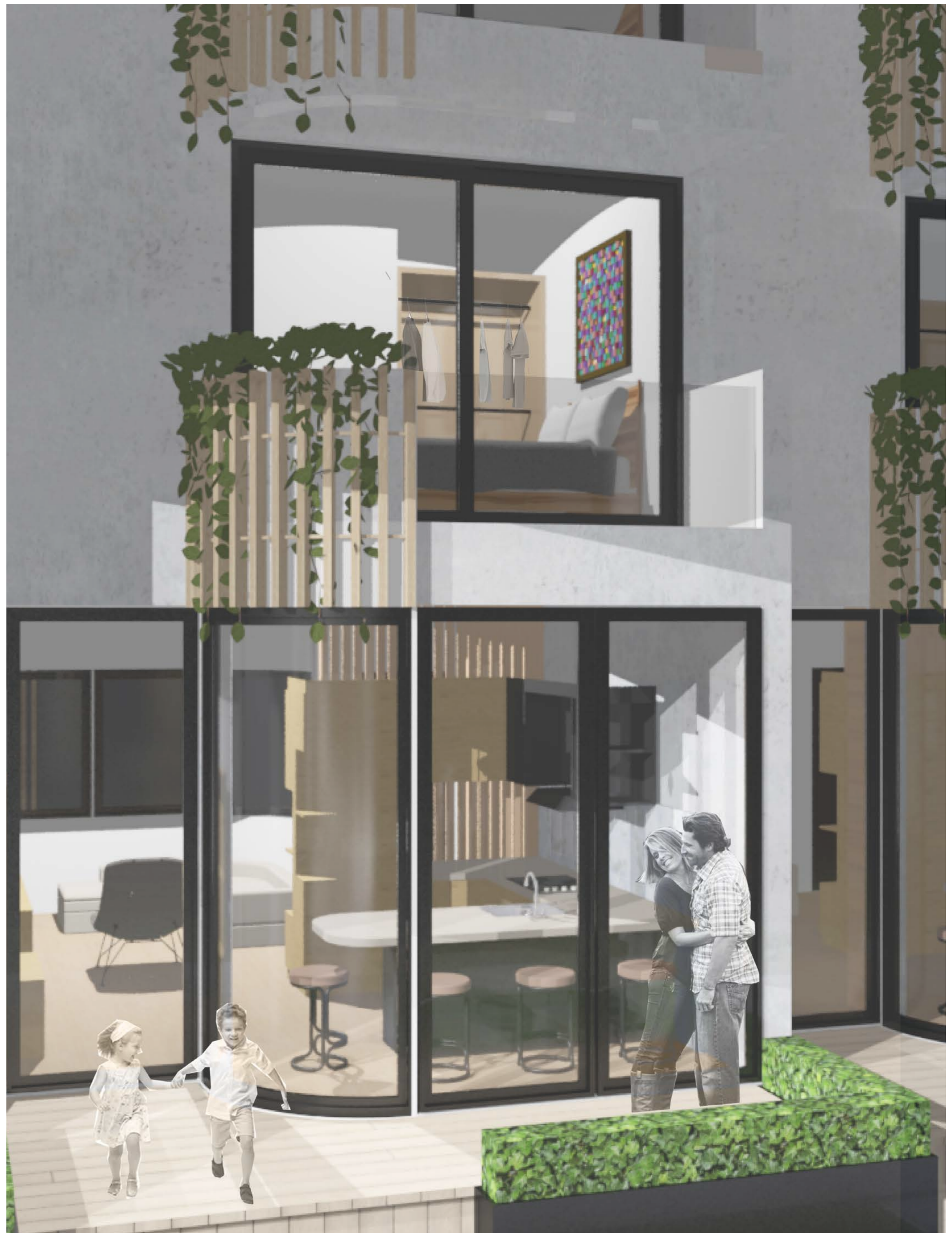
- COMMUNAL SPACE INDOOR / OUTDOOR
- RESIDENTIAL
- STORAGE / UTILITIES
- STAIRS / LIFT ACCESS



GROUND FLOOR PLAN 1:50



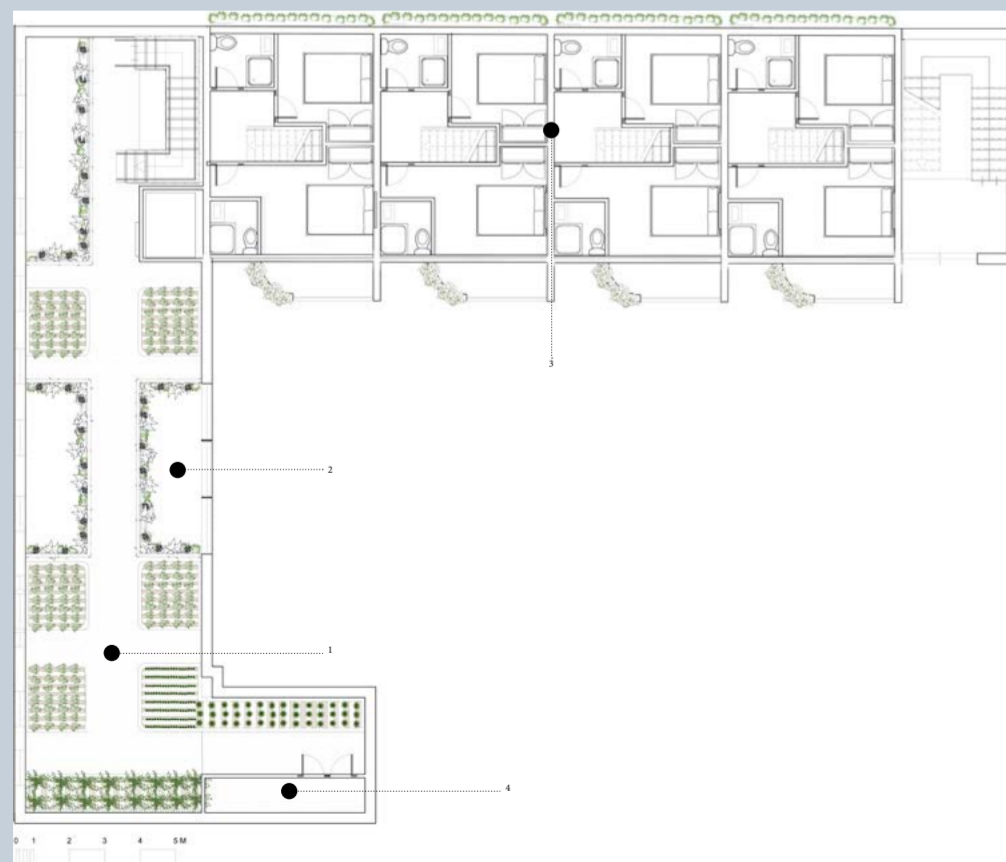
- 1- LAUNDRY ROOM/ BIKE STORAGE
- 2- COMMUNAL SPACE
- 3- ENTRANCE LOBBY
- 4- GROUND FLOOR APARTMENTS
- 5- COMMUNAL COURTYARD
- 6- STAIRS/ ROOF ACCESS





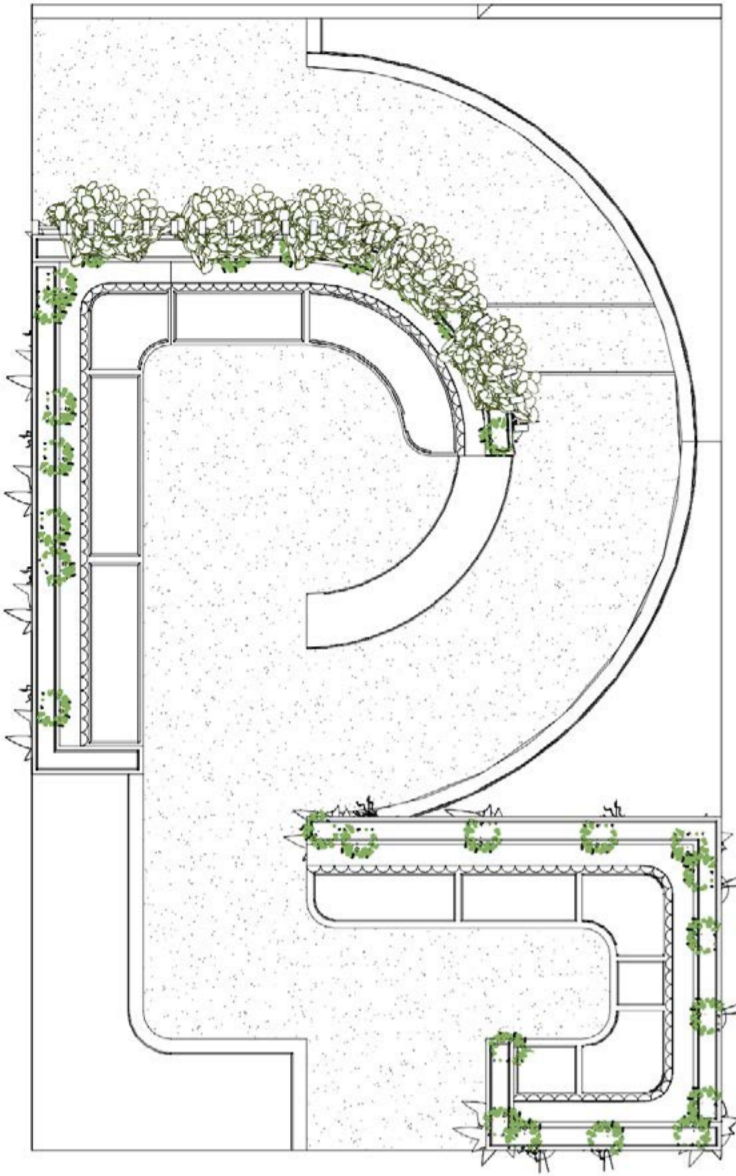


FIRST FLOOR PLAN 1:50



- 1- INDOOR GROW GARDEN
- 2- VOID TO GROUND FLOOR
- 3- SECOND FLOOR APARTMENTS
- 4- GARDEN STORAGE

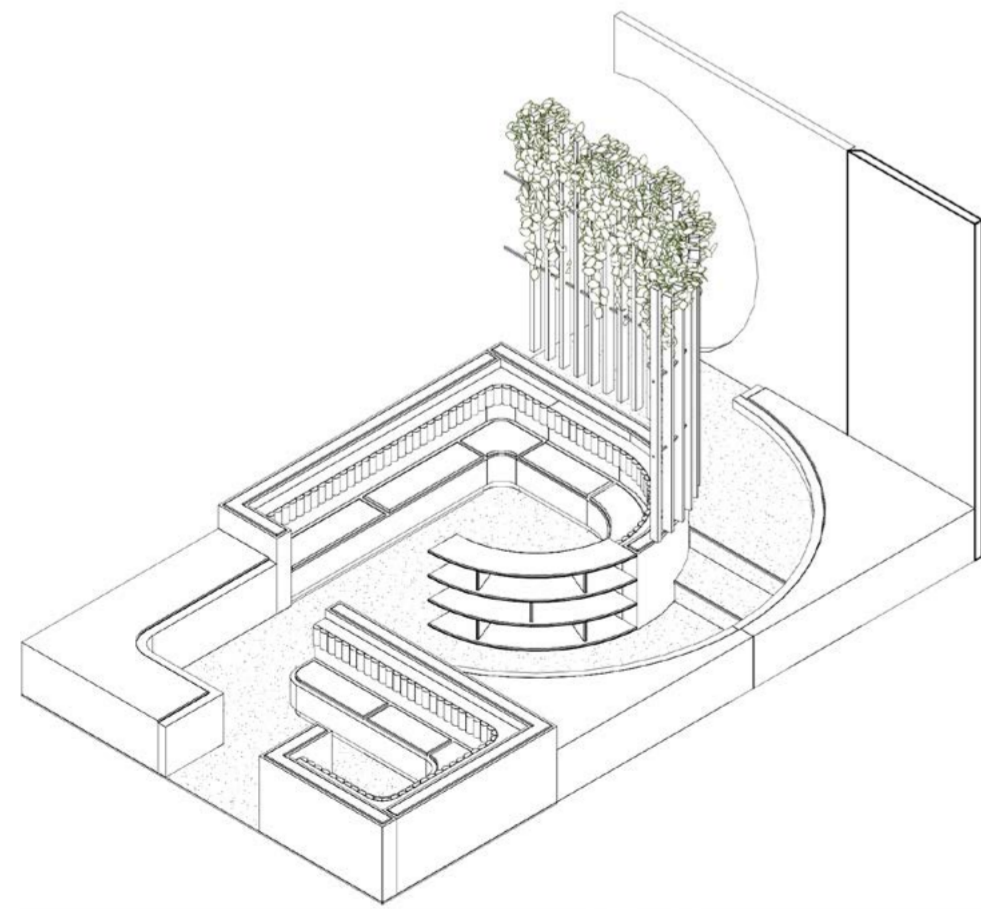
ROOFTOP VEGETABLE GARDEN



COMMUNAL SPACE

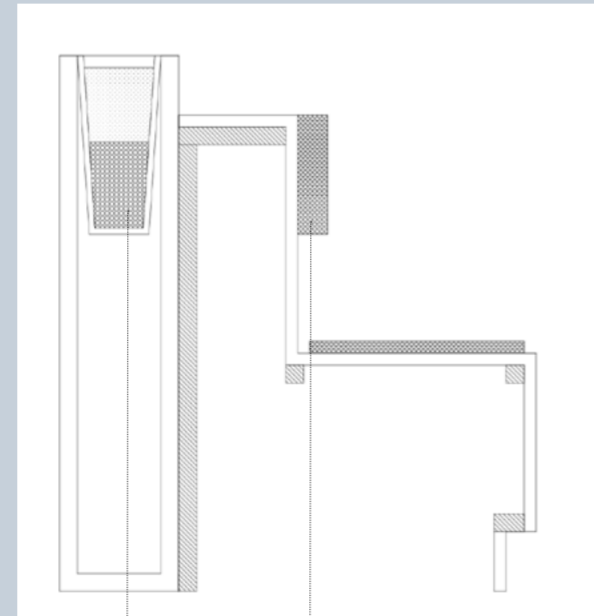


COMMUNAL SPACE - SEATING SPECIFICATION



SEATING DETAIL ISOMETRIC

SEATING DETAIL SECTION



PLANTER SEATING CUSHIONS

