



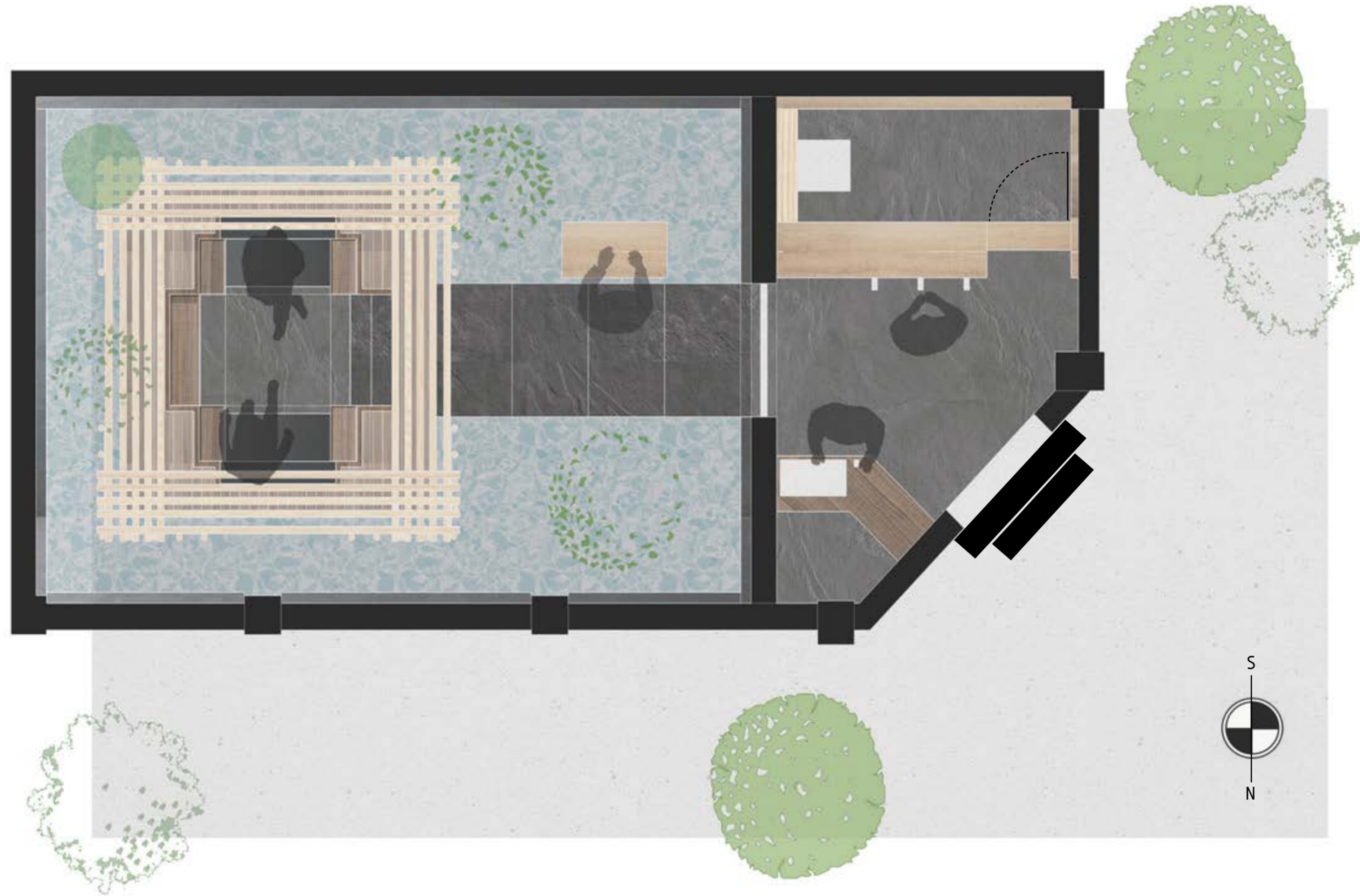
RENDERED ELEVATION



This elevation showcases the materiality and feel of the space. The section also shows the details of the sunken seating and how that interacts with the environment around it. This image also demonstrates the effect the lighting has on the different spaces and materials.

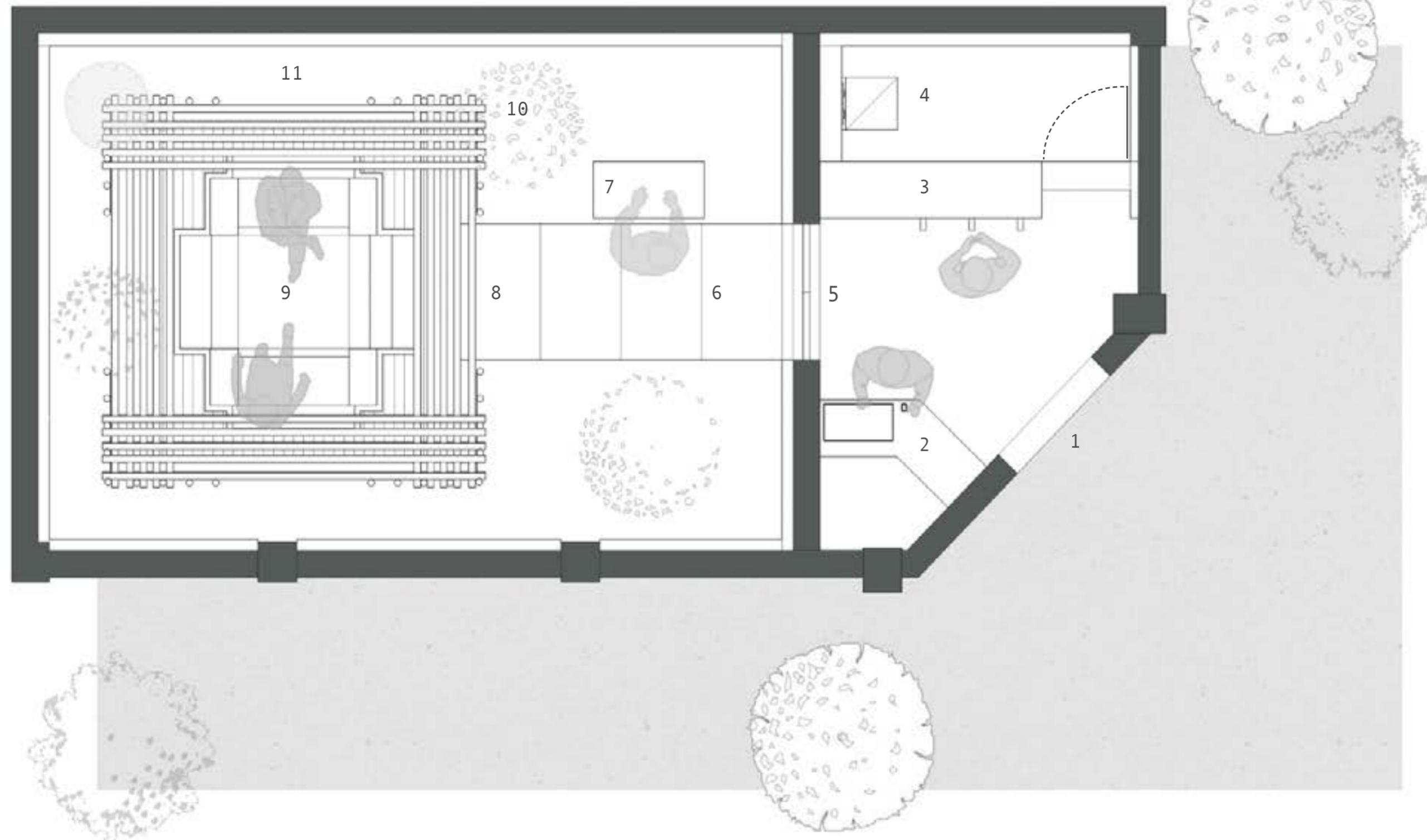
Materials such as the rammed earth and black steel are displayed in this image





RENDERED PLAN

This rendered plan shows the materiality of the space from above. It showcases the water surrounding the dining platform and the texture of the lobby floor.



AXONOMETRICS

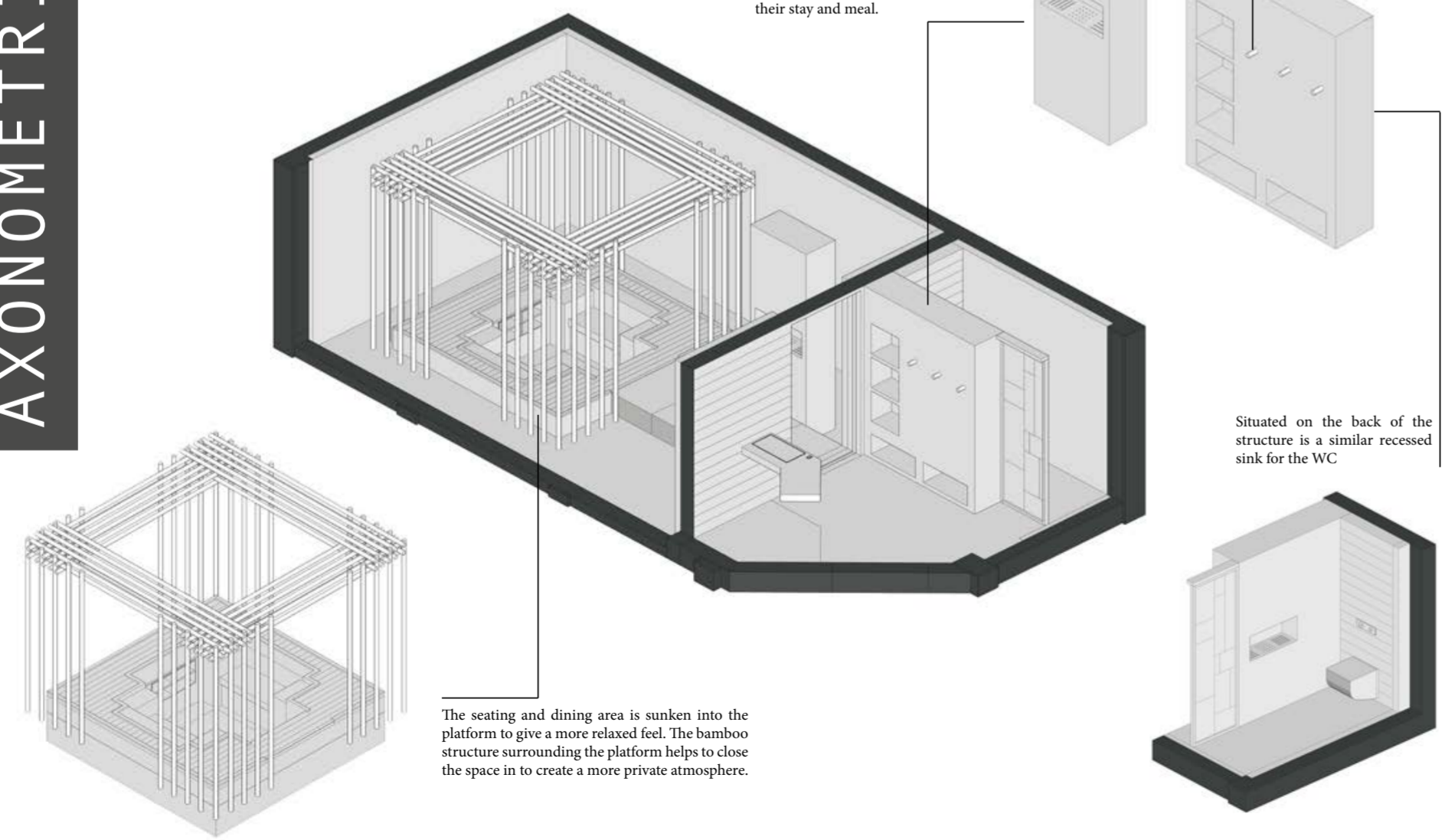
This isometric drawing shows the space in 3D and helps to give context to all the different elements of the space and how they interact with each other. Elements of this design help to maximise the small space. For example, the central rammed earth structure which has multiple functions.

The central rammed earth structure is multifunctional. The right module acts as storage for customers belongings. The left module is a place for the customers to wash their hands before, after and/or during their stay and meal.

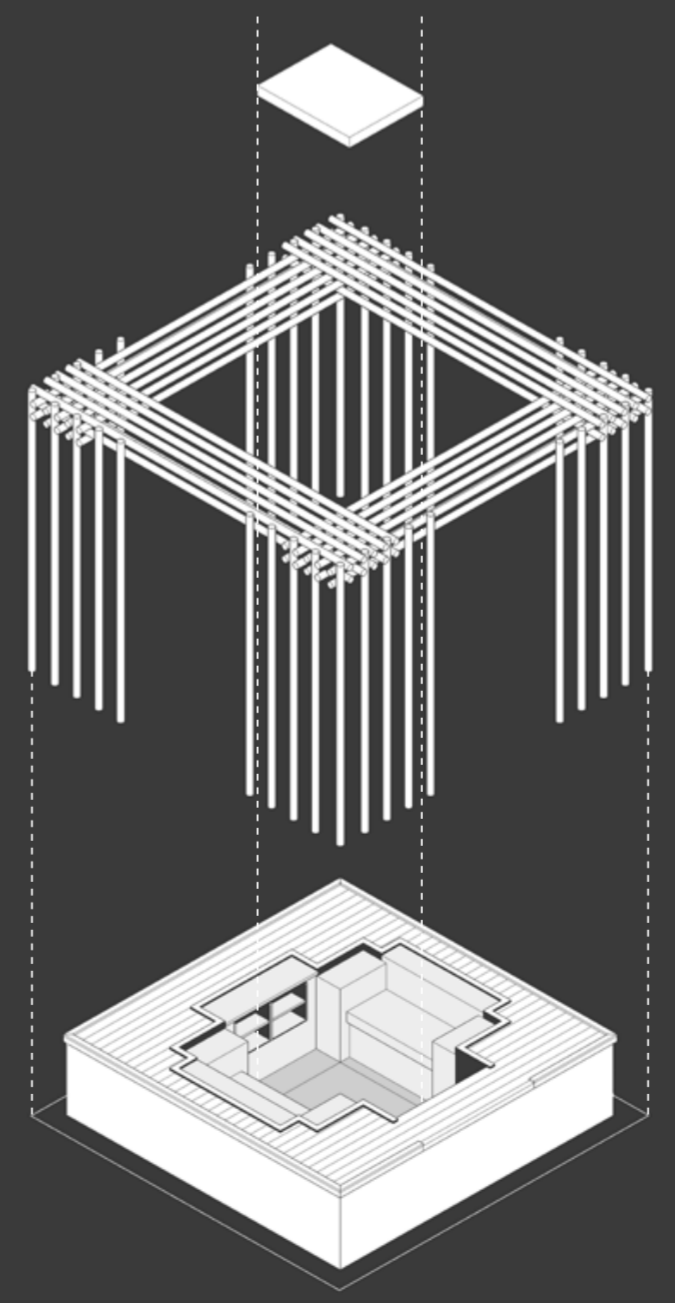
Coat hooks are made out of bamboo to tie it in with Japanese architecture and the main dining space.

Situated on the back of the structure is a similar recessed sink for the WC

The seating and dining area is sunken into the platform to give a more relaxed feel. The bamboo structure surrounding the platform helps to close the space in to create a more private atmosphere.



EXPLODED ISOMETRIC

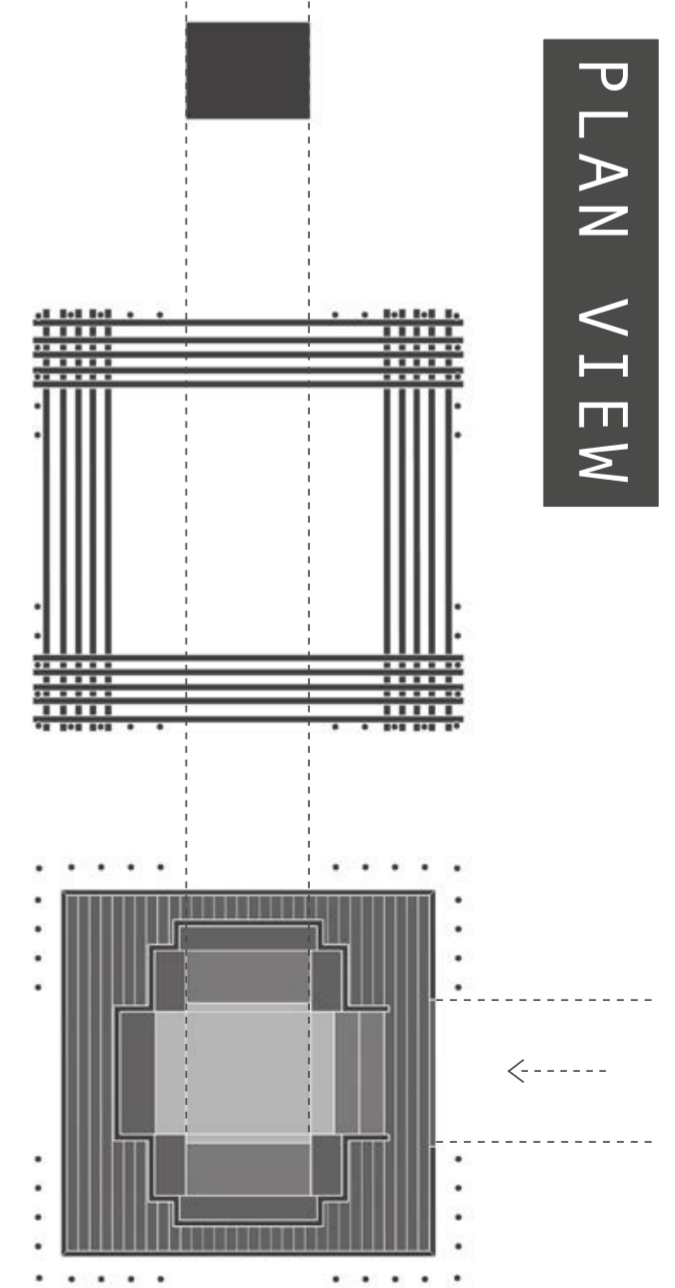


TABLE

BAMBOO STRUCTURE

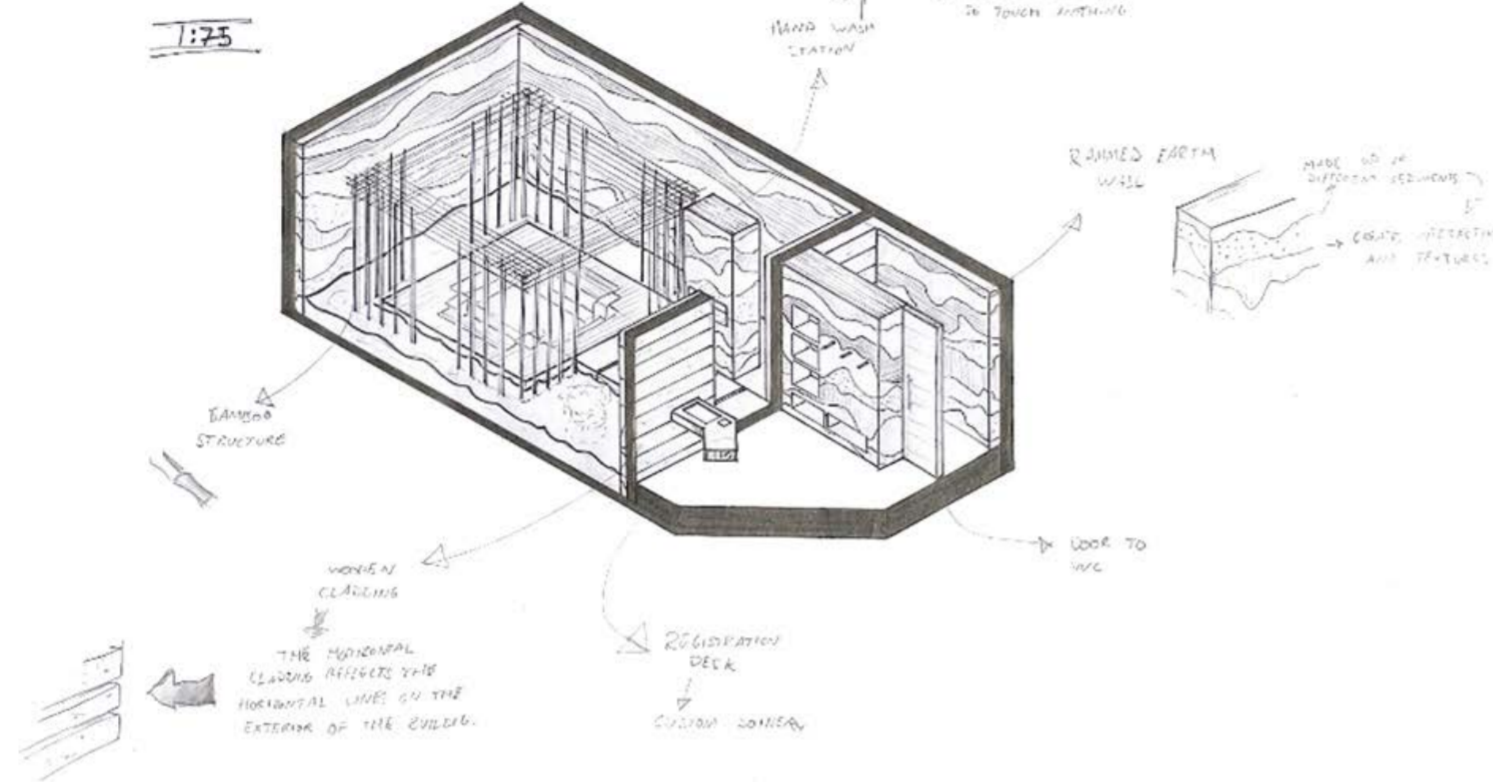
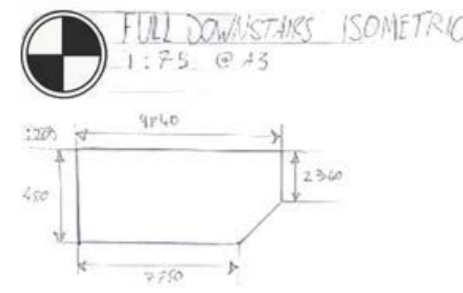
SEATING AREA

PLAN VIEW



HAND DRAWN ISOMETRIC

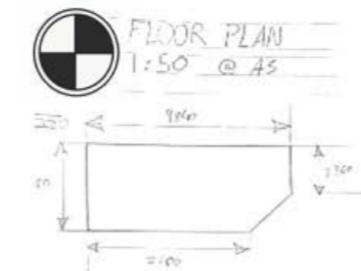
This drawing explored materiality. It helped me understand the relationship between the materials and how they interact with each other. I came to the conclusion that the rammed earth walls in the main space didn't work and took attention away from the centre rammed earth structure. This led me to explore different materials before I finally landed on black steel. The black steel acts as a nice backdrop allowing light and patterns to reflect off of it without it looking too messy or busy. It is also a nod to the Sheffield steel industry. The drawing explores the space in a 3 dimensional way which helps to better understand the space.



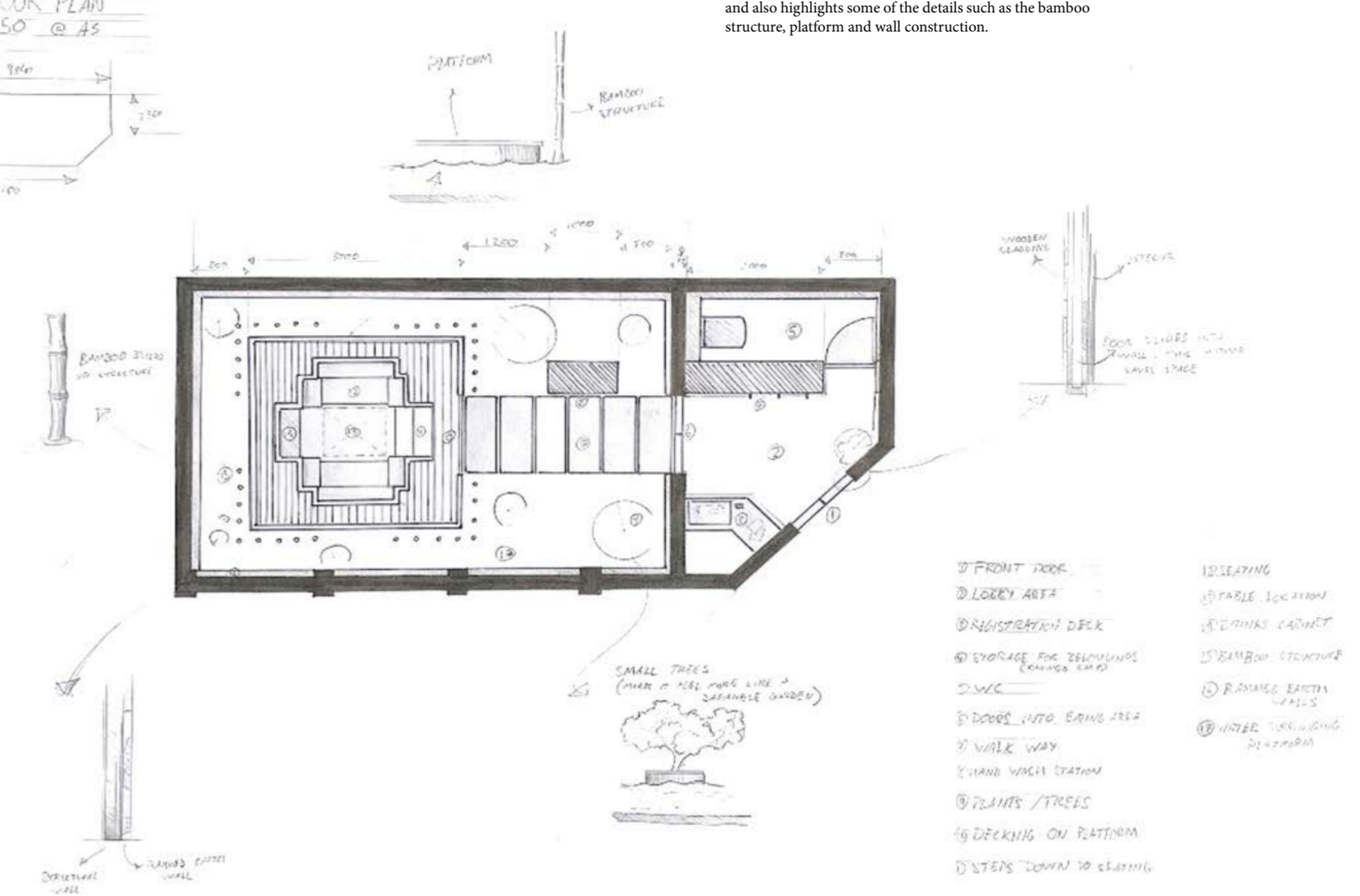
ISOMETRIC DRAWING

HAND DRAWN FINAL PLAN

This plan was the final iteration of my design. This drawing clearly and accurately shows how the space is organized and also highlights some of the details such as the bamboo structure, platform and wall construction.



FLOORPLAN DRAWING



DESIGN DEVELOPMENT

These images show the development drawings that led me to my final design. These drawings demonstrate the problem solving needed to maximize the small space whilst also portraying the feel and look of the space. Each detail has been carefully considered to fit in with the design direction of the project and pay homage to traditional Japanese architecture and culture whilst also introducing modern ideas and technology.

