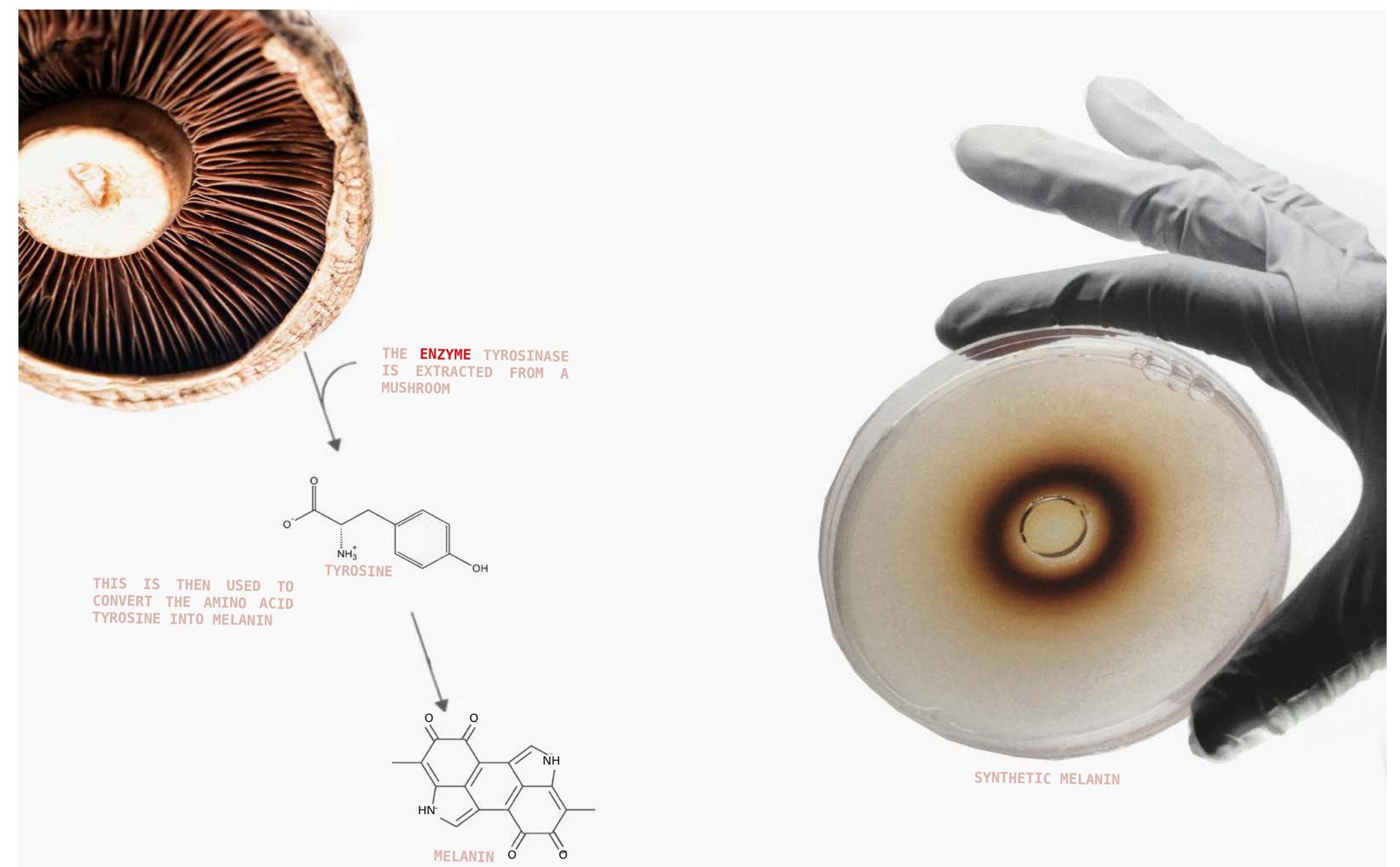


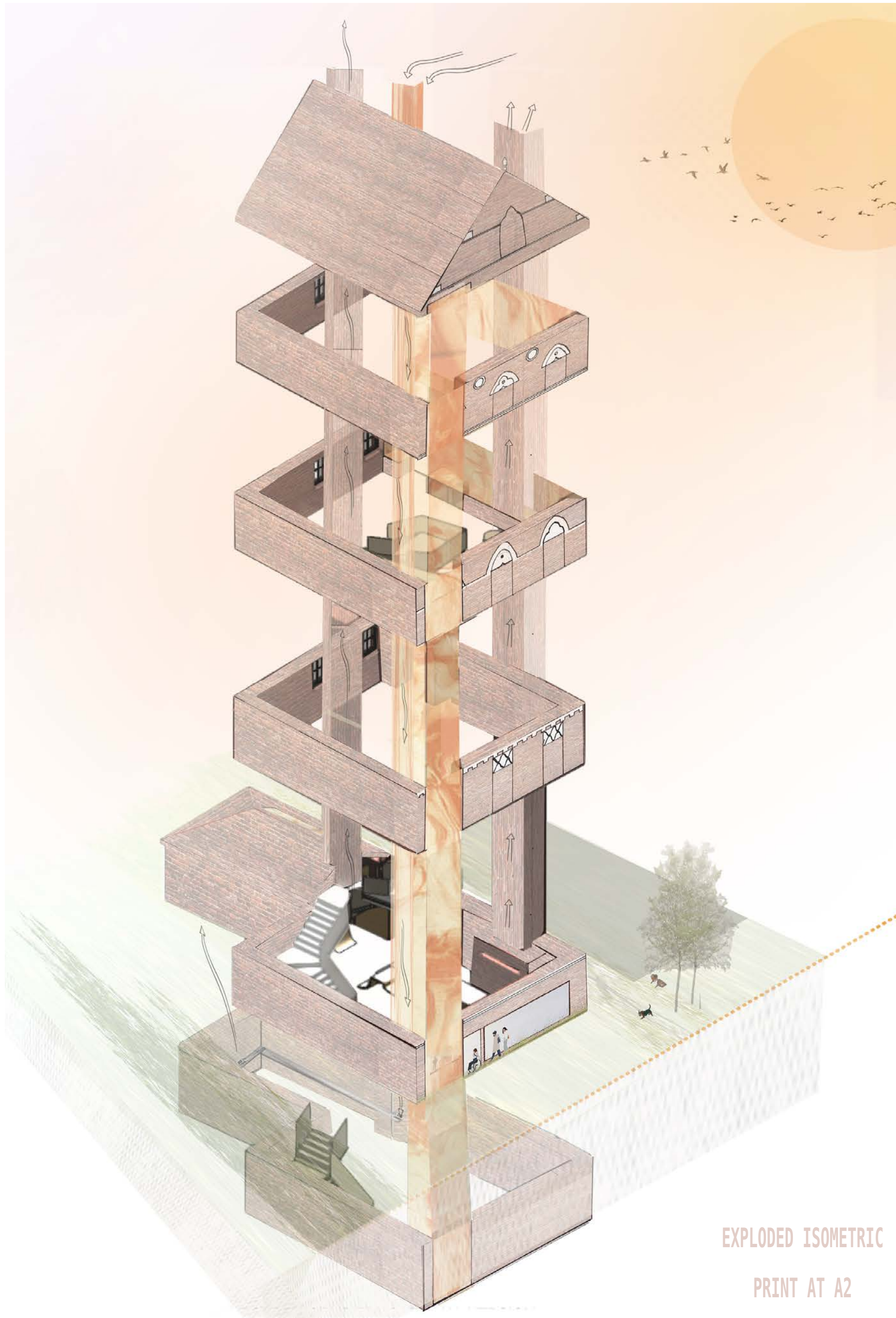


#shuiad



USING 3D PRINTED GLASS, STRUCTURES ARE CREATED WHICH HAVE CHANNELS SPECIFICALLY POSITIONED WHERE THE MATERIAL IS REQUIRED. THE MELANIN IS INJECTED INTO THESE CHANNELS AND IS SUSPENDED WITHIN THE GLASS.





EXPLODED ISOMETRIC
PRINT AT A2



ENZYMES



CONCEPT BOARD 21

#shuiad



#shuiad

GROUND FLOOR ENTRANCE + SERVICE



#shuiad