

CULTURE EXCHANGE

REFUGEE COMMUNITY CENTRE

The old Savoy cinema is being transformed into a refugee centre in Sligo, called 'Culture Exchange.' This centre promotes community integration and cultural exchange, offering a haven of respect, dignity, and opportunity for those seeking refuge in Ireland. With around 70,000 refugees arriving in Ireland in the past 2 years, 'Culture Exchange' aims to provide essential needs and advice while removing the stigma and social injustice often faced by refugees. It's more than just a shelter; it's a space for healing displacement, nurturing talents, and fostering social justice by ensuring equal access to opportunities and resources. This initiative enriches Sligo with diverse cultures, creating an inclusive and compassionate community for all.

Opportunities

Recognise

Reflect

Heal

The Site



Why the project was chosen?



70,000 refugees came to Ireland to seek help



Students from Sligo were left with no accommodation Due to the refugee crisis



Enrich Sligo with a variety of cultures

Opportunities inside



Market -Culture Swap



Information & Advice



Activities



Education



Accommodation

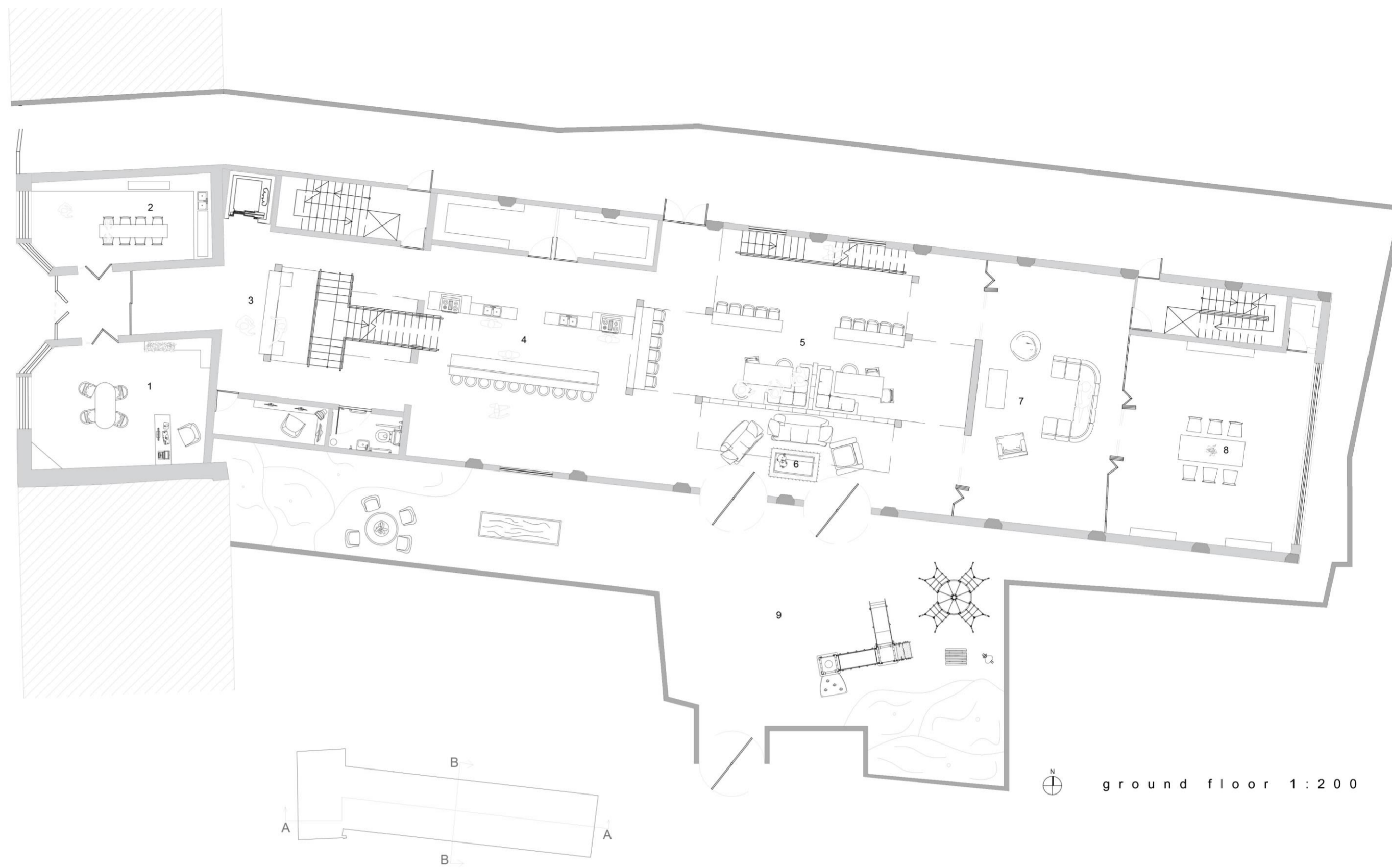


Community Building



The Building

The Savoy cinema, nestled in the seaside town of Sligo, was built in 1932 and has withstood the test of time, preserving a rich history within its walls. The exterior, now weathered and worn, features Art Deco details that tell a story of resilience and character. The once vibrant paint has mellowed, giving the structure a unique and nostalgic charm. 'Culture Exchange' serves a new purpose as a sanctuary for refugees, providing a space where individuals can find solace and support. This transformation mirrors the cinema's journey of resilience and adaptation. Within its storied confines, the past meets the present, offering hope and a brighter future for those seeking refuge amidst their challenges.



1. Mini - market
2. Workshop
3. Reception
4. Kitchen
5. Seating area
6. Lounge area
7. Projector area
8. Activities room
9. Garden

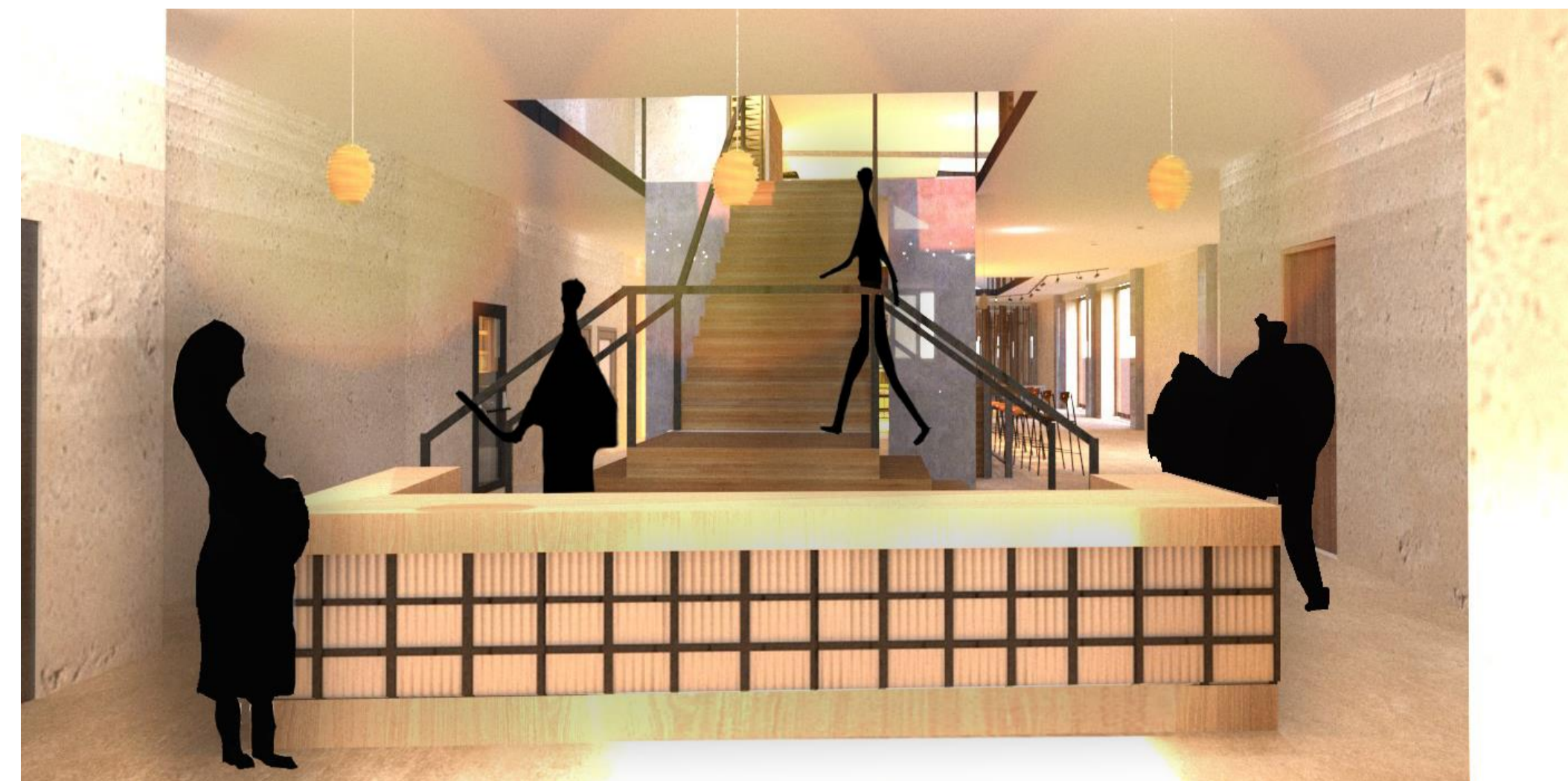
ground floor 1:200

Mini-Market

Culture Exchange has a mini market at the front of the building to provide refugees with a place to showcase and share their talents with the public. This initiative not only enables refugees to earn income but also fosters cultural exchange and understanding within the community. To enhance this space further, there is a workshop that educates the public about the diverse cultures represented by refugees.

Reception

The reception area can serve as a welcoming and informative space for both refugees and visitors, providing assistance, information, and resources to those in need. It also acts as a hub for community engagement, facilitating communication and coordination among individuals from diverse backgrounds.





Furniture boards for each floor

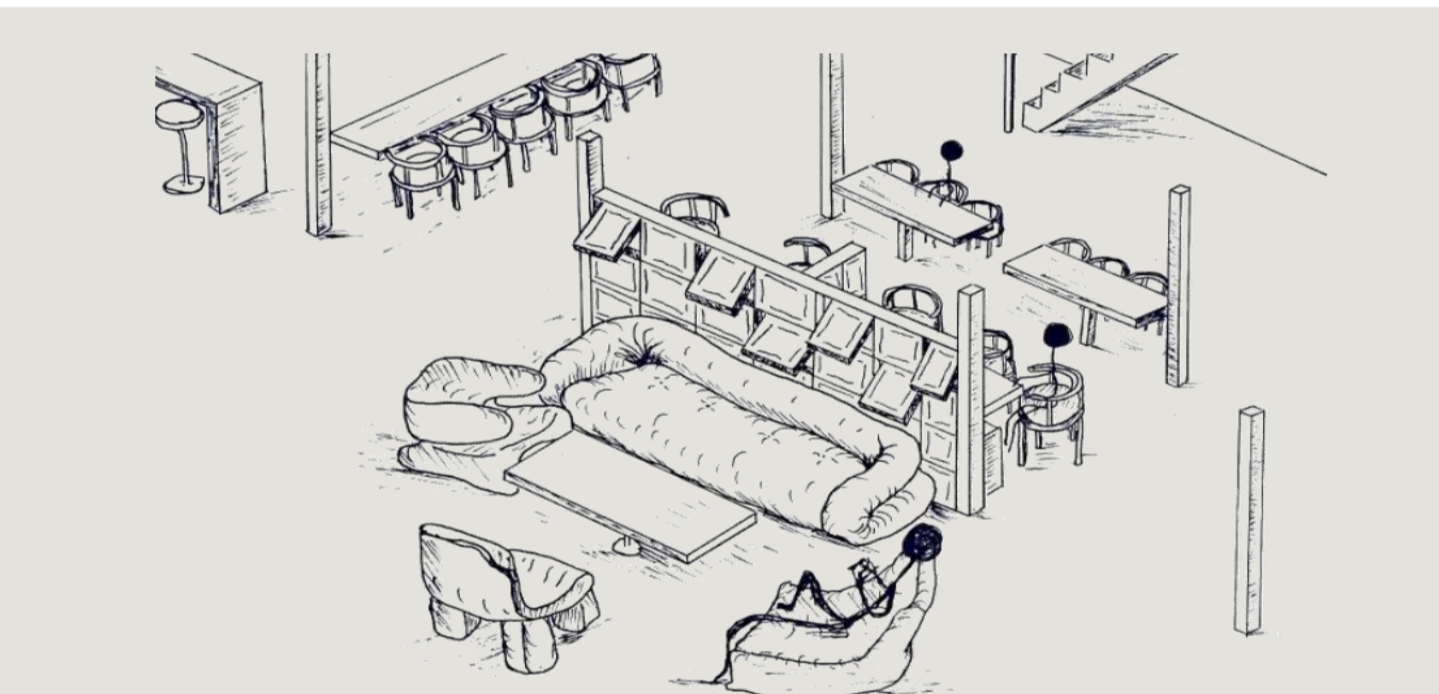
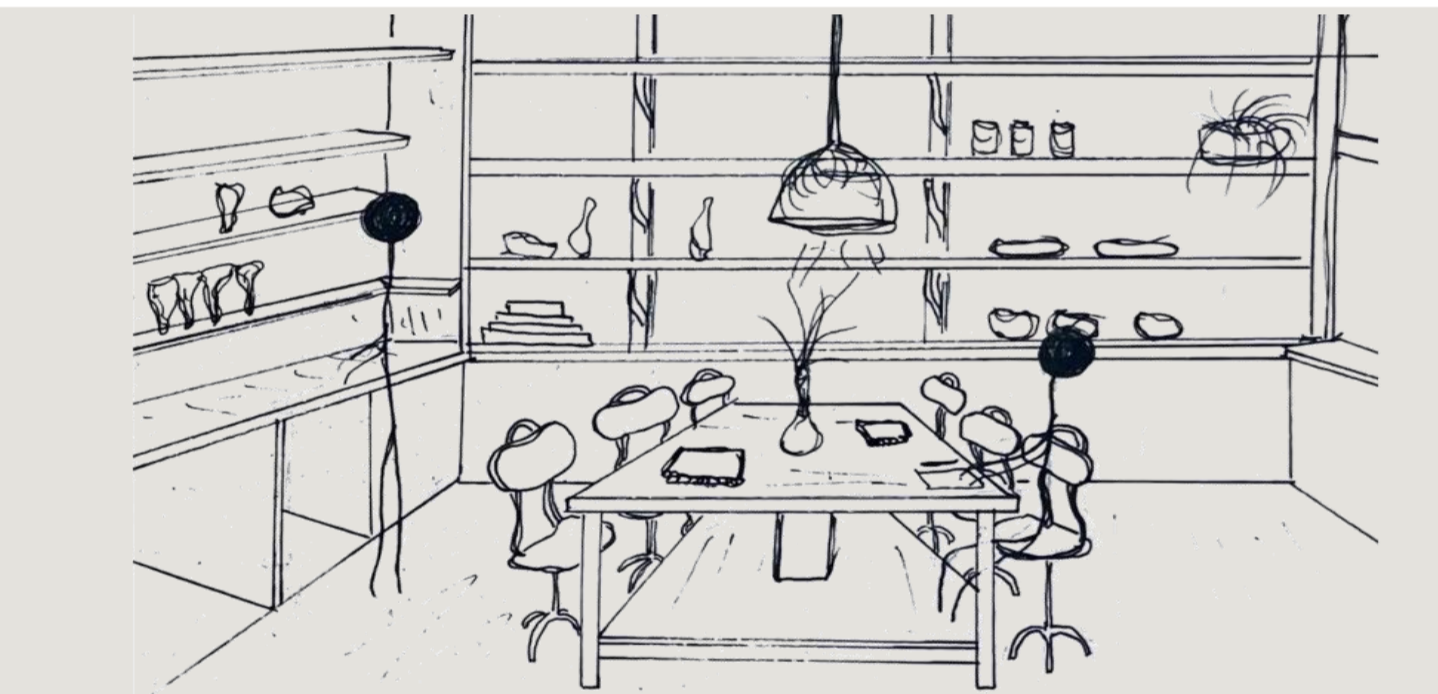
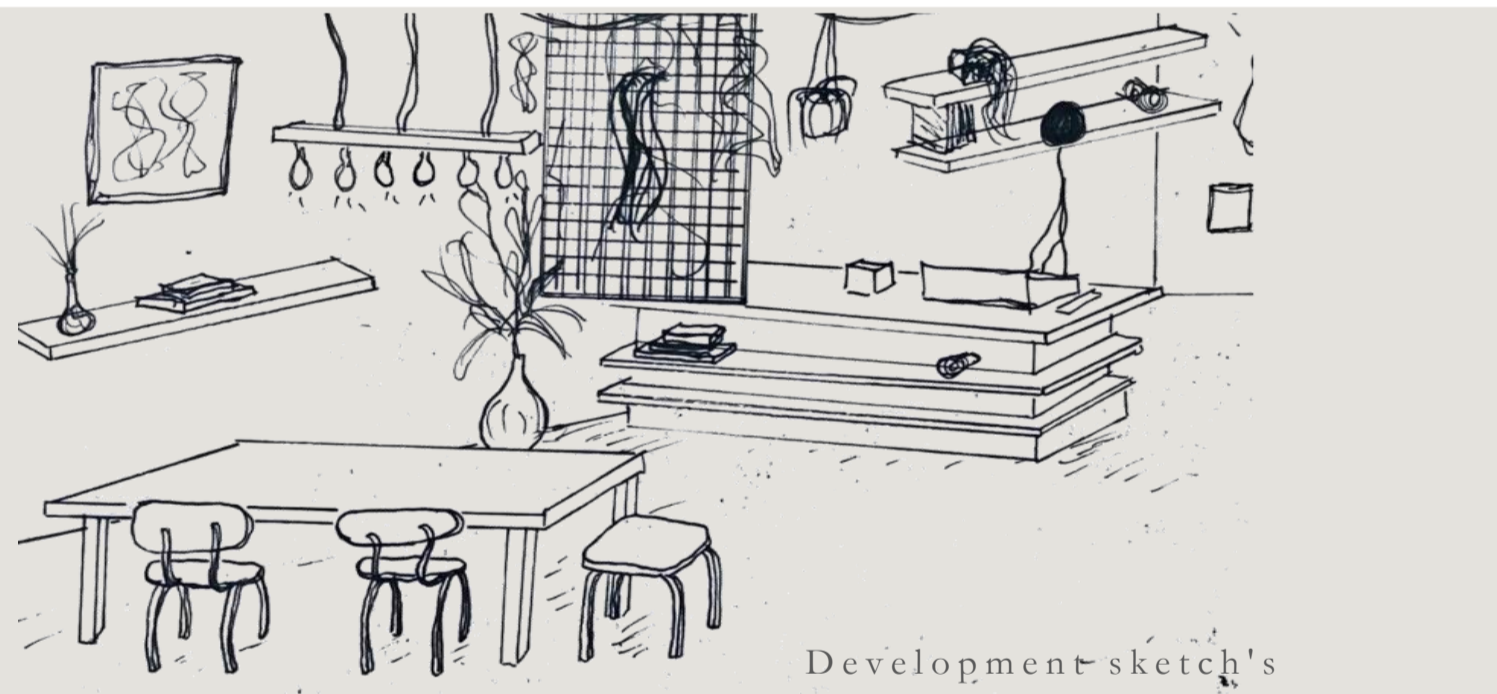
The Concept

"Culture Exchange" is a community space in Sligo that fosters cultural understanding and provides refuge for refugees. The building offers zones for privacy and safety while promoting shared experiences. It celebrates diversity and inclusion, welcoming people from all over the world to exchange cultures and experiences.

Design Vision

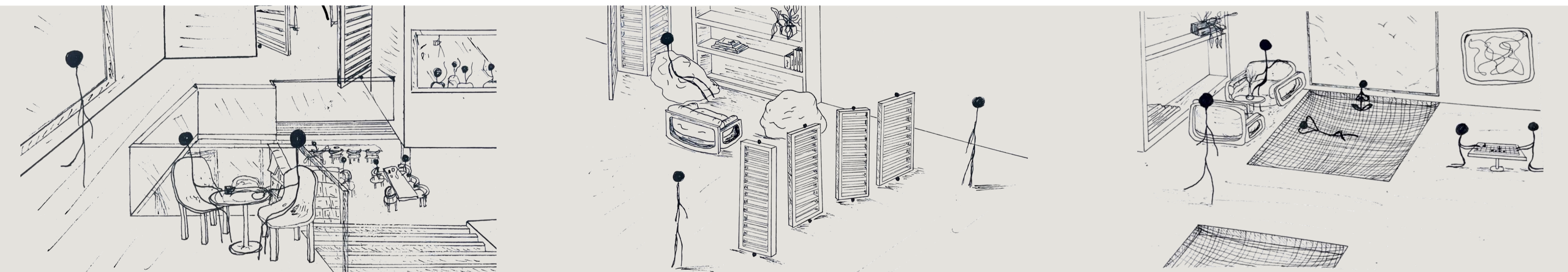
The design vision aims to balance communal interaction with personal retreats, offering shared activities alongside quieter spaces for reflection and intimate moments. The ground floor features an open-plan layout integrating the kitchen, dining, and activity areas with easy access to the garden. Safety is prioritised with clear views provided by large windows, and privacy is ensured through separate private entrances and outdoor seating areas for moments of solace





Development sketch's





Opportunities

The refugee centre offers activities, an arts and crafts studio, English classes, job support, counselling, and healthcare services, as well as; relaxation areas for refugees, providing them with the best opportunities to create a better life. The refugee's bedrooms were designed for them while considering their experiences, alcove beds often provide a cozy and enclosed sleeping environment, which can be good for relaxation and sleep. The enclosed design can make you feel secure and snug. Alcove beds incorporate storage solutions, such as built-in shelves, drawers, or under-bed storage, which can help keep the room organised and reduce clutter.

Connecting the Floors

The design features large voids connecting the floors, allowing for a sense of openness and continuity throughout the building. On the first floor, occupants have a clear view of the main areas on the ground floor, fostering a sense of connection while maintaining privacy, as those below can't see up. Wooden panelling serves a dual purpose, not only adding aesthetic warmth but also regulating light and shadow intensity. This feature helps filter sunlight, ensuring thermal comfort and providing natural ventilation. The voids strategically guide natural light into the building, enhancing the overall atmosphere and creating an inviting environment for everyday activities such as reading or dining.

