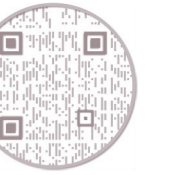


The Picture House Karen Keaney

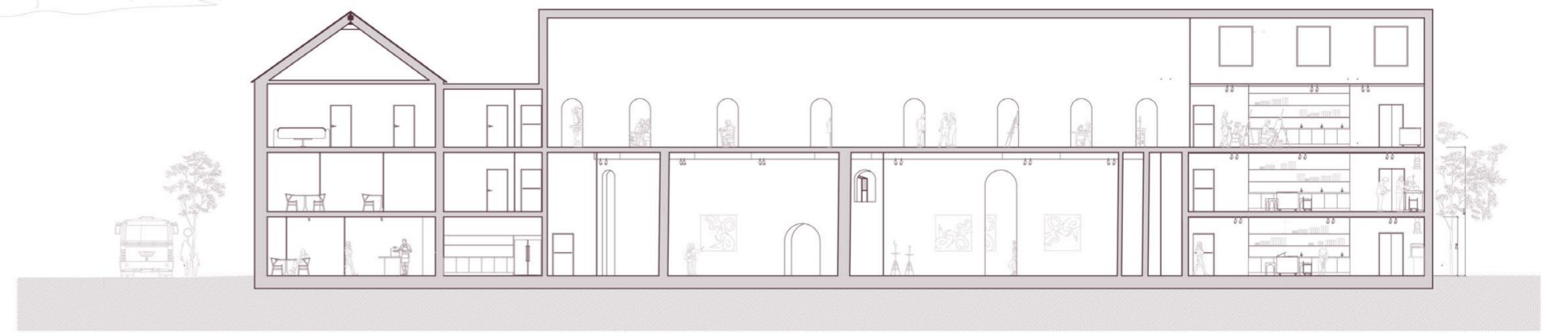
In a city where creativity flows and imagination knows no bounds, the old Savoy Cinema, now a derelict building, stands as a blank canvas eagerly waiting to be transformed into a hub of artistic expression. The decaying structure, with its faded walls and broken windows, is about to embark on a journey of rebirth as a new art centre. A vision of revitalisation and community engagement, this project seeks to breathe new life into the abandoned building and provide a haven for artists, art enthusiasts, and the local community.

This centre entices the visitor through its doors with the friendly atmosphere of its café. From there, the visitor is tempted to explore further through the arched hallway. An awe-inspiring gallery awaits on the other side, lofty triple-height spaces evoke a sense of child-like wonder. Glimpses of the three multipurpose maker spaces and artist studios are visible, tempting the curious to explore further. The maker spaces are artistic sanctuaries, where dreams and visions come to life and creativity is explored, supported, and encouraged by resident artists.

Welcome to the birth of a new art centre, where imagination takes lofty flight, and the beauty of art unfolds in the most unexpected of places as we embark on this exciting venture and witness the magic of art coming to life in a once-forgotten building.



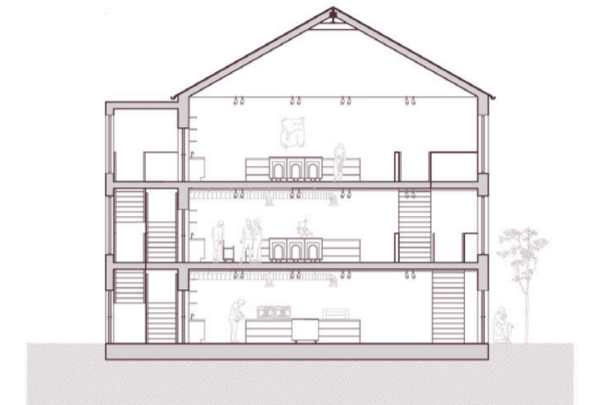
Scan for concept image



section AA



section BB



section CC

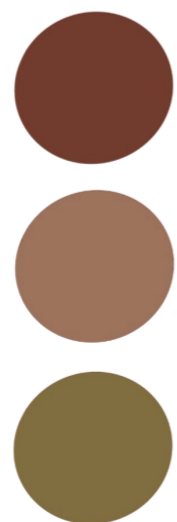


- 1 cafe
- 2 wc
- 3 store
- 4 exhibit
- 5 screen
- 6 maker
- 7 quiet cafe/meet
- 8 cafe
- 9 wc
- 10 store/services

- 11 exhibit (double height)
- 12 maker wet
- 13 intermission
- 14 admin
- 15 store
- 16 wc
- 17 store/services
- 18 artists
- 19 intermission
- 20 maker dry

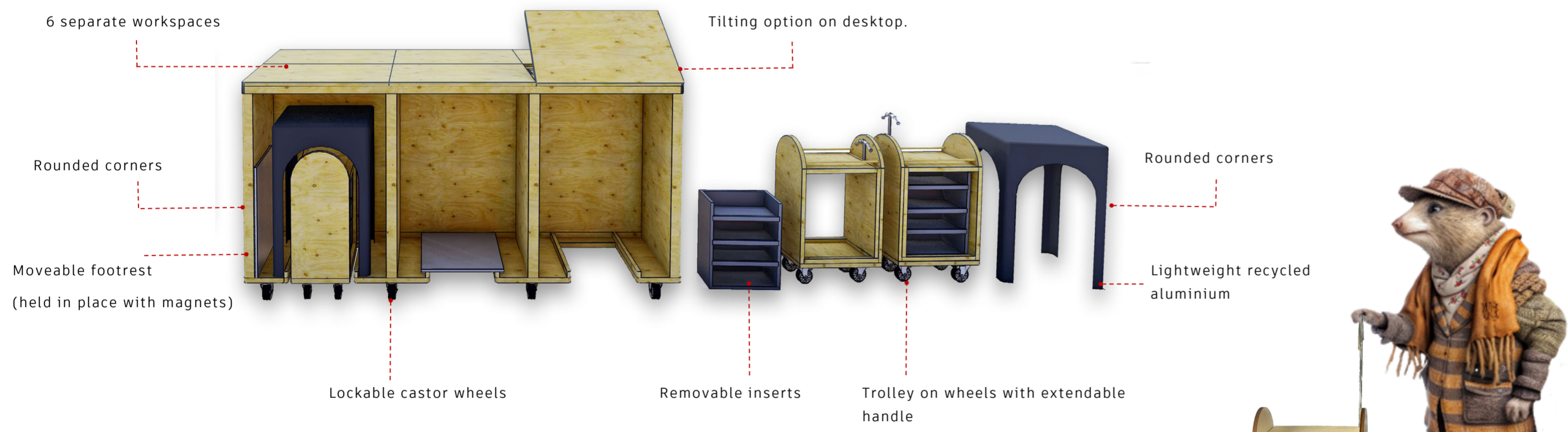
Imagine stepping into a world of artistic wonders, where creativity dances with architecture and beauty unfolds at every turn. Welcome to the extraordinary art gallery with triple-height ceilings and curved walls perforated with graceful arches. This magnificent space is a testament to the fusion of art and design. As you enter, your eyes are immediately drawn upward, mesmerised by the grandeur of the triple-height ceilings. The expansive space creates a sense of openness and freedom, allowing the art to breathe and come alive.



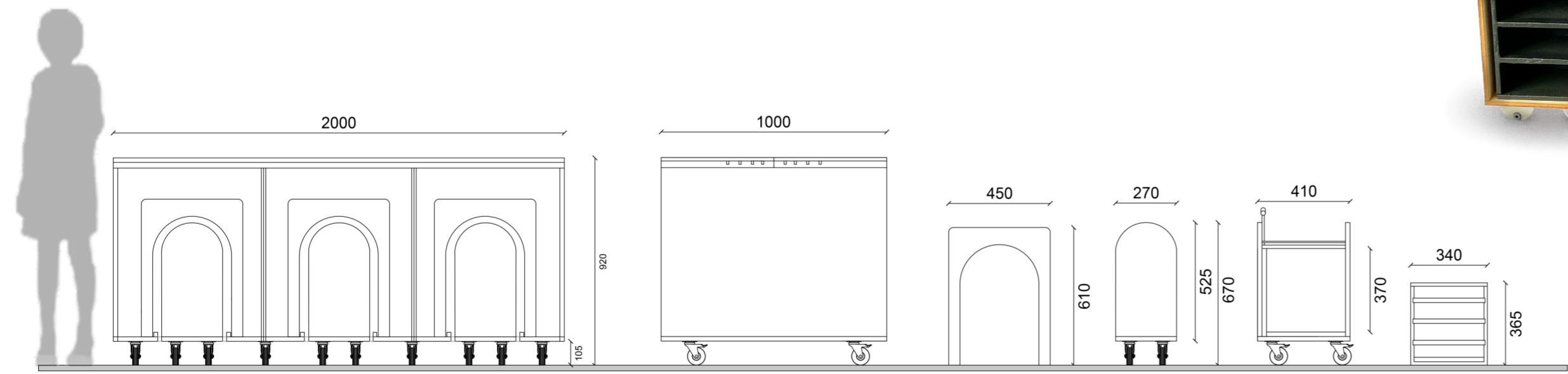


Traditional art spaces and galleries can sometimes feel intimidating or exclusive to those who are less familiar with the art world. By integrating a cafe, the atmosphere becomes more approachable and inviting, making art appreciation more accessible to a broader audience. People who may not typically visit galleries may be enticed to enter the space out of curiosity and discover the beauty and power of art. Combining this social space with an art space and gallery, there is an opportunity to create a symbiotic relationship. The cafe enhances the overall experience for visitors to the art space, providing a welcoming environment where they can relax, socialise, and engage with the artwork. Conversely, the art space and gallery attract a diverse audience to the cafe, generating foot traffic and fostering a vibrant community hub.





Physical Model 1:5



The maker spaces offer access to various tools, equipment, and resources that may not be readily available to individuals. Creating a community-based maker hub provides people with the opportunity to learn new skills, whether it's woodworking, 3D printing or other forms of making. Workshops, classes, and mentorship programs can be organised to facilitate skill development and foster a sense of continuous learning within the community. It is a gathering place where like-minded individuals can come together, collaborate, and share knowledge. By bringing together artists, makers, and creators from different backgrounds, it creates a rich environment for cross-pollination of ideas and collaboration on projects.