

POPULATION TO ISOLATION

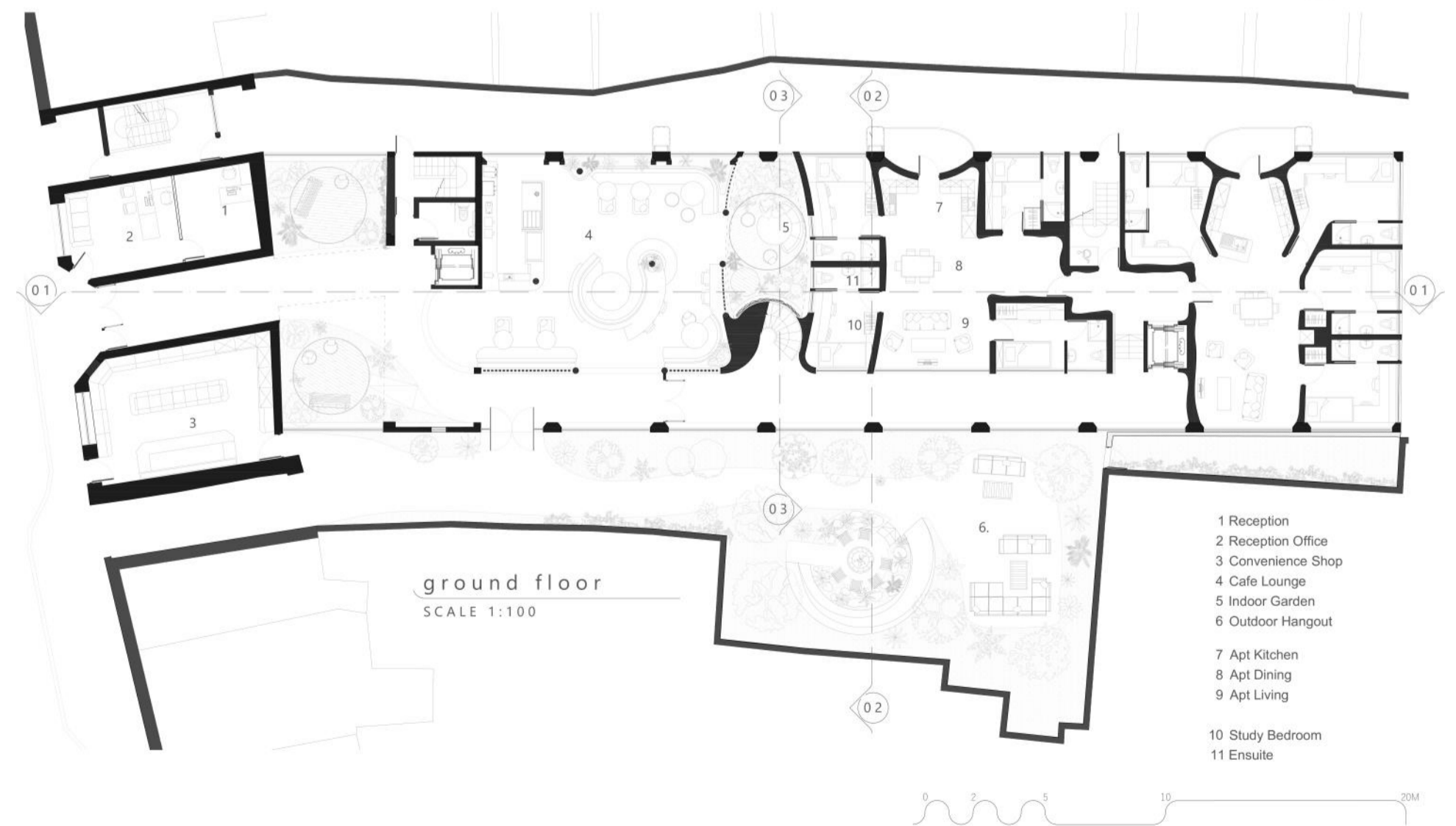
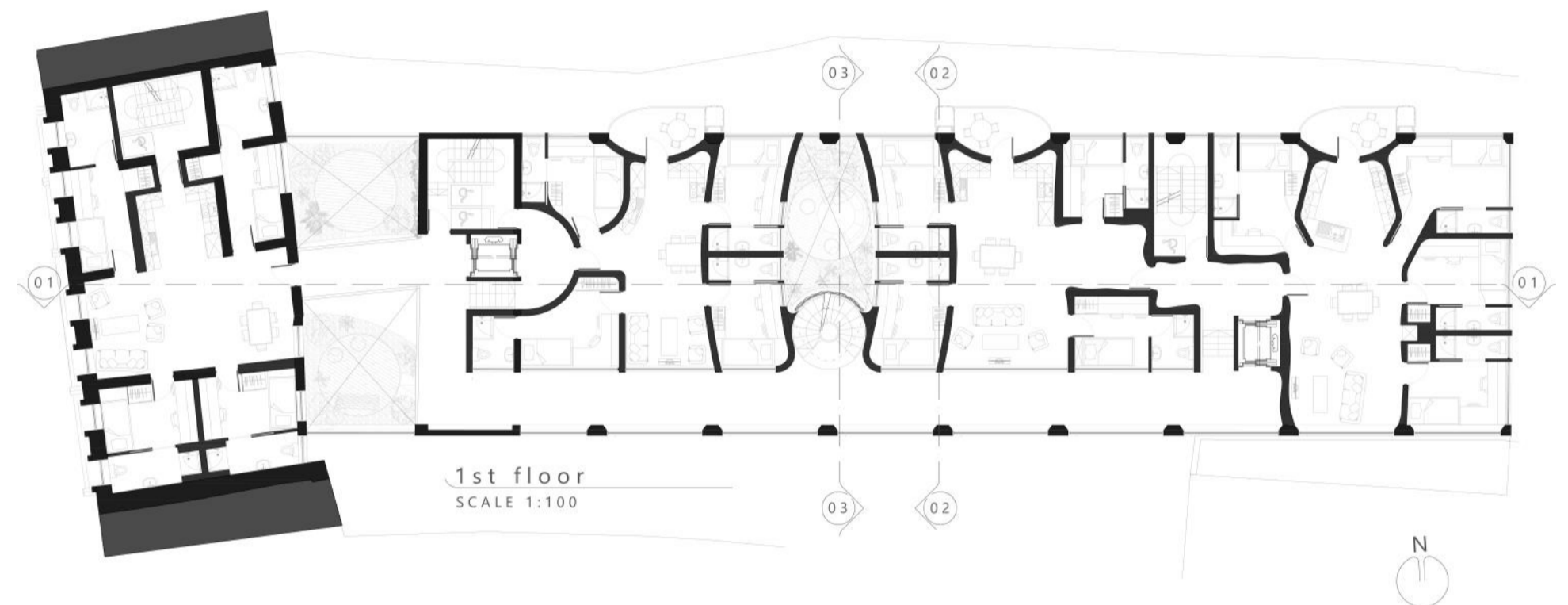
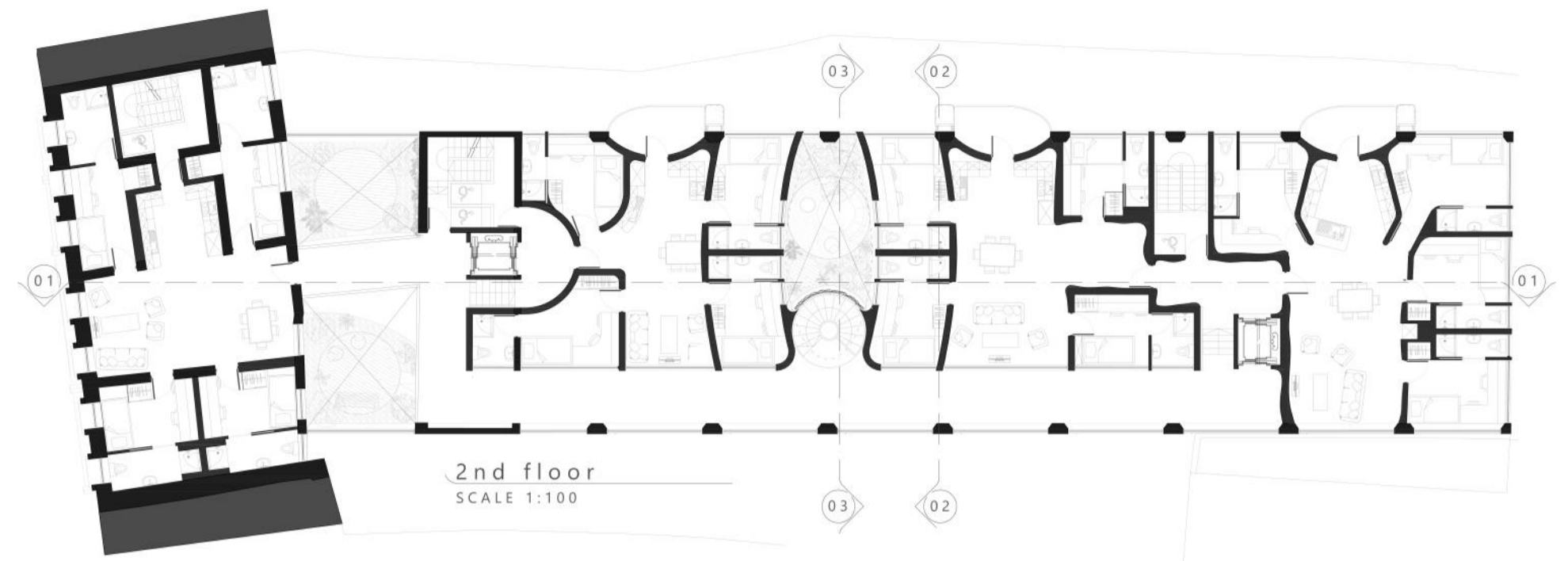
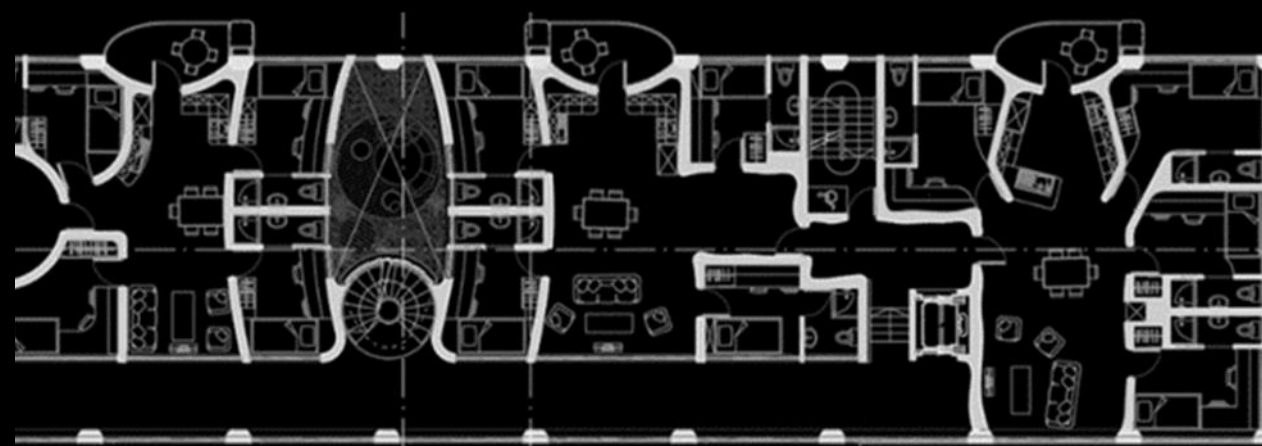
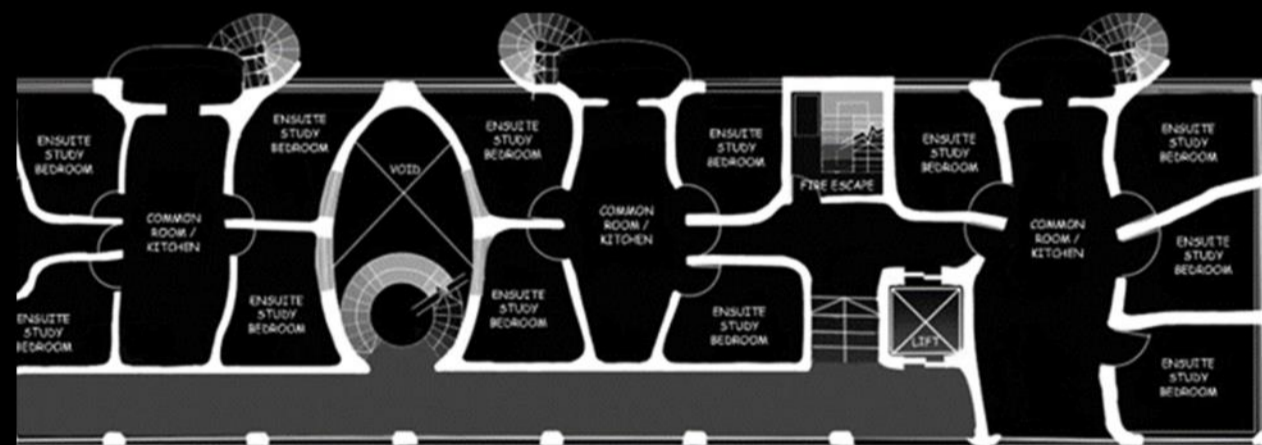
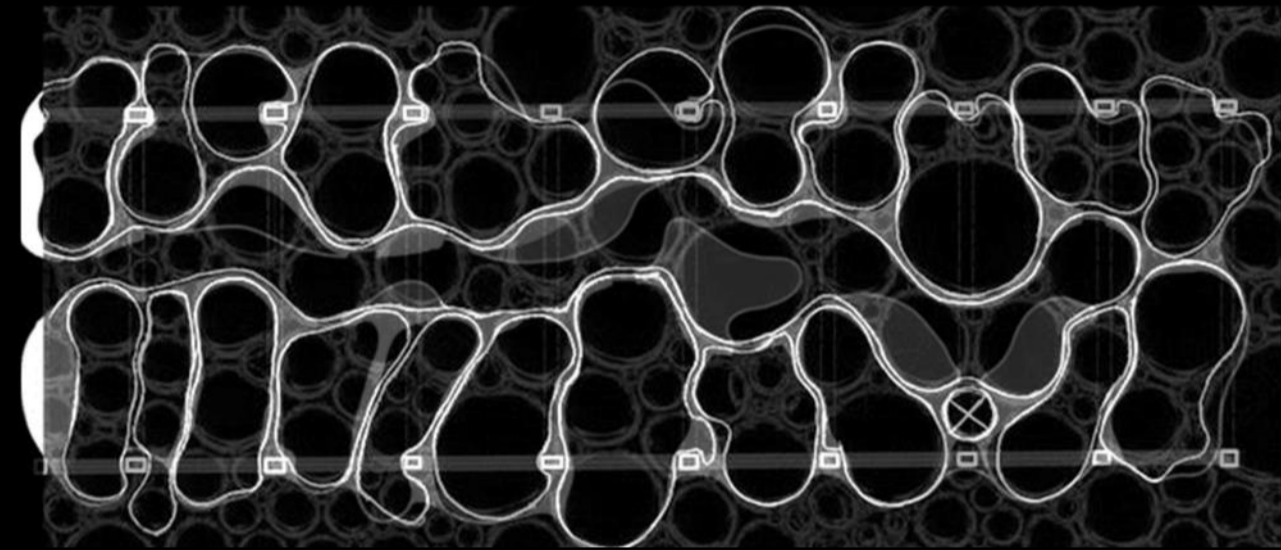
DAVID CARRØLL
INTERIOR ARCHITECT
& DESIGNER

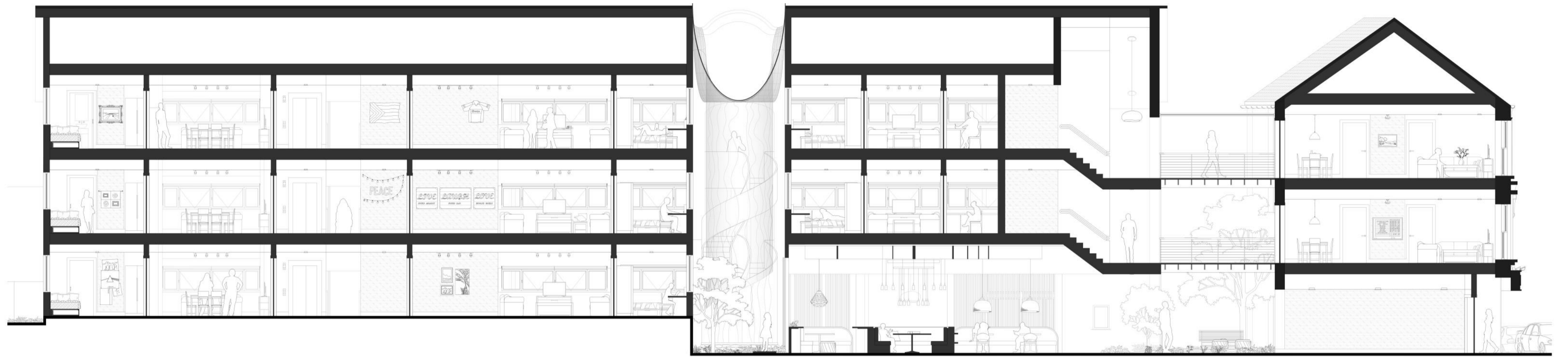


The **Old Savoy Cinema** along Sligo's Highstreet, long abandoned, yet is survived by fond memories by locals. The regeneration of the Old Savoy Cinema respects its past service to the surrounds –not necessarily as a cinema- but as an area of **congregation** that fosters **interaction** and **socialisation**. Instead of immediate seclusion upon entering, the design offers a gradual transition from the busy Sligo streetscape, through various social spaces shared by residents, into individual apartments, and finally the seclusion of a student's study bedroom. This journey is composed so that students have finer control over own **privacy** and **exposure** to the world around them; providing opportunities to socialise and form new bonds while offering sufficient refuge to recuperate. A breakup of the spectrum between **Population to Isolation**.



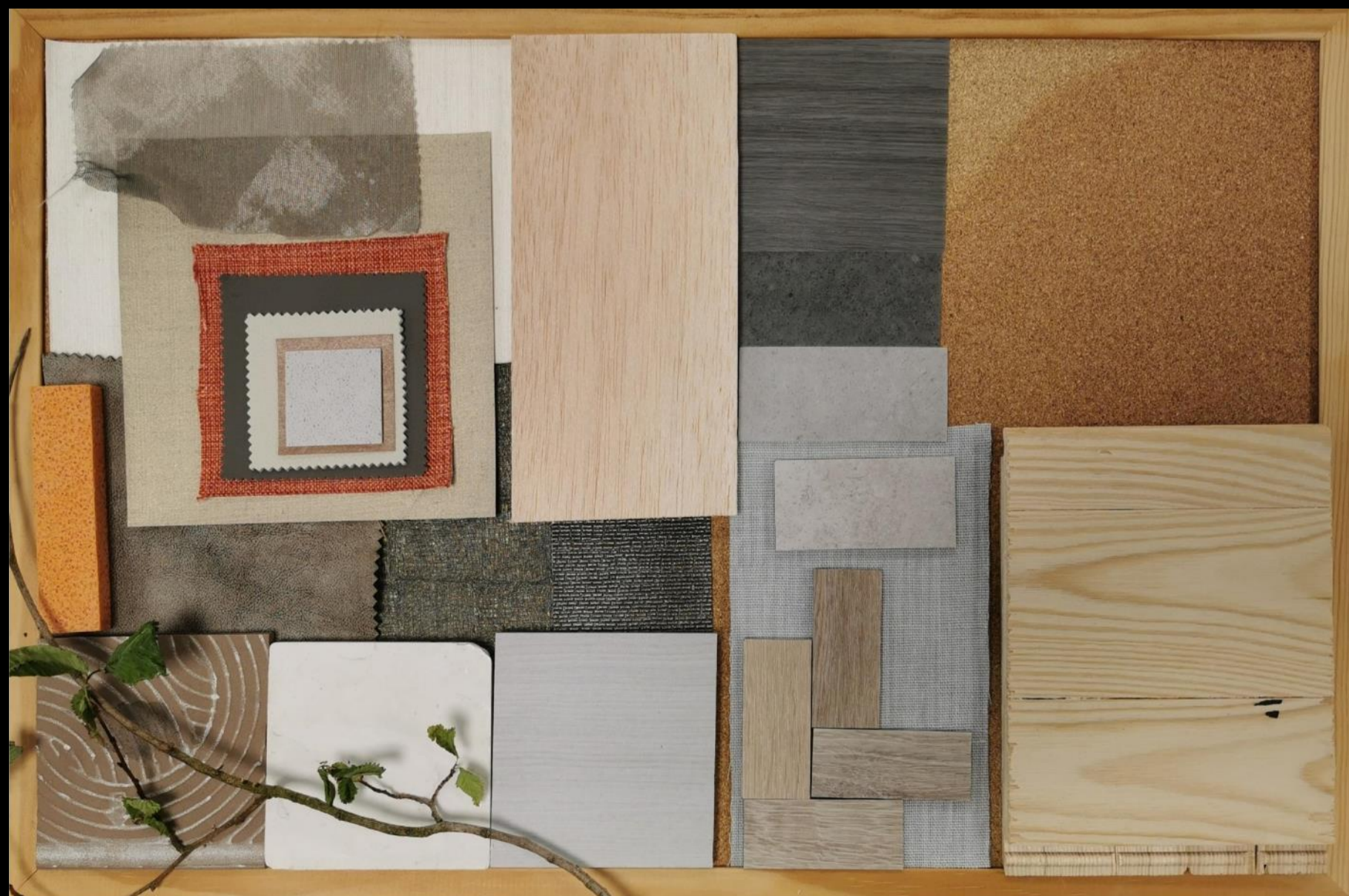
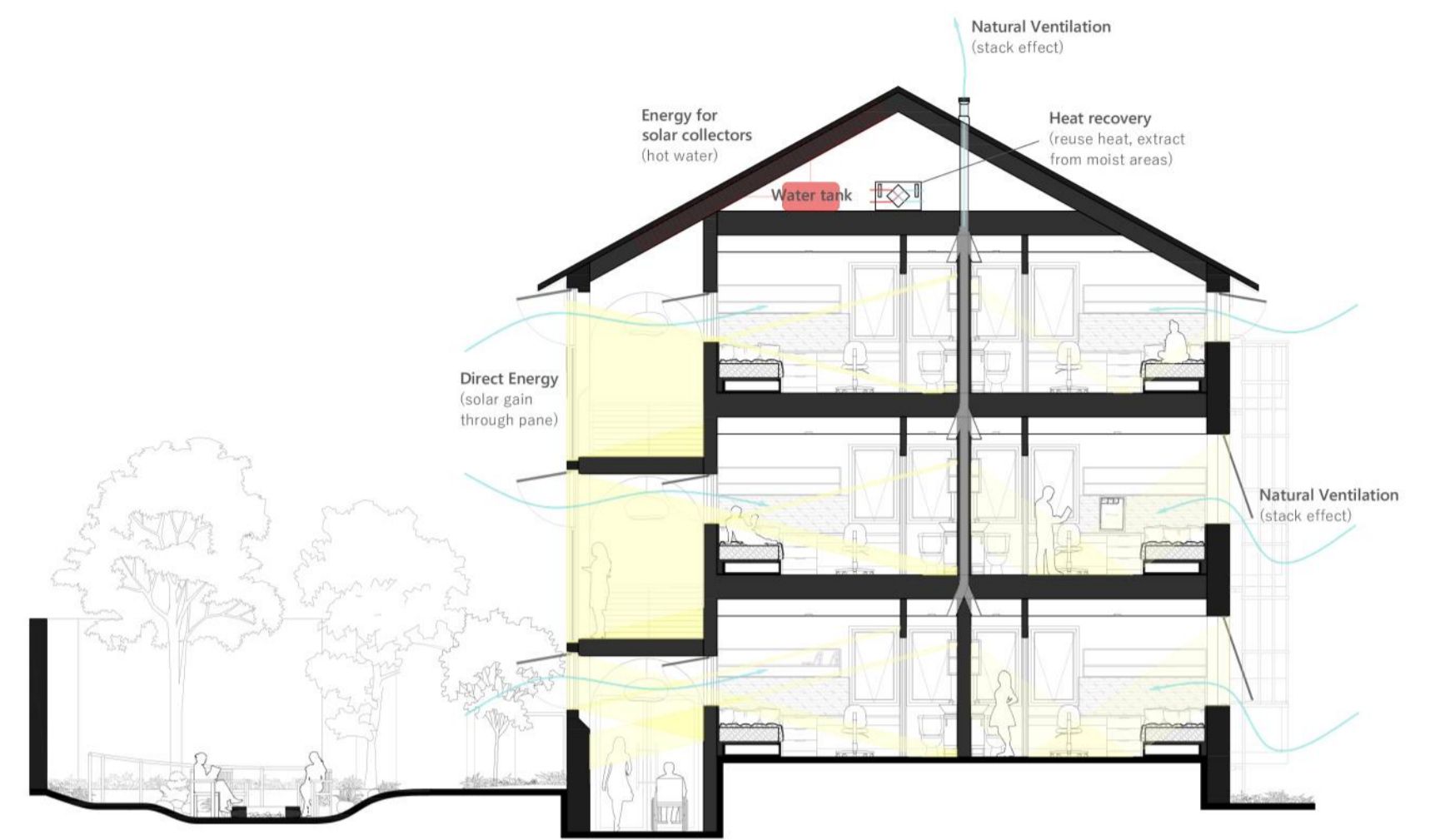
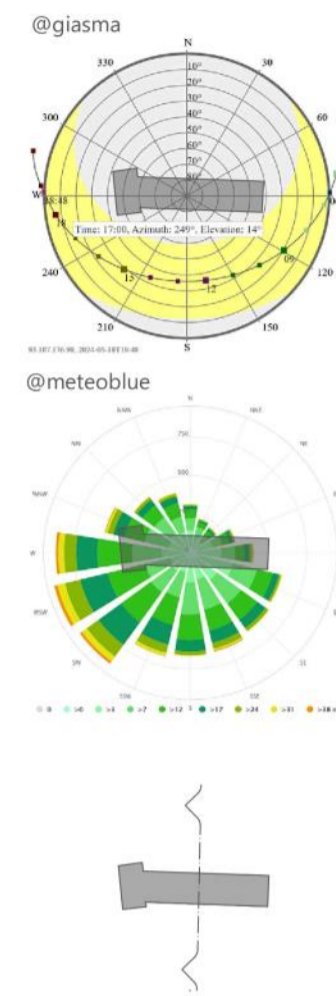
Each student unique, no room the same. Rejecting conventional rectilinear room divisions, the design embraces organic, flowing spaces reflecting the individuality of each resident, departing from the institutional feel of standardised accommodations. Half-level circulatory routes provide uninterrupted views and natural daylight, allowing students to observe others while maintaining privacy. This element of prospect/refuge fosters a sense of community and individual autonomy.





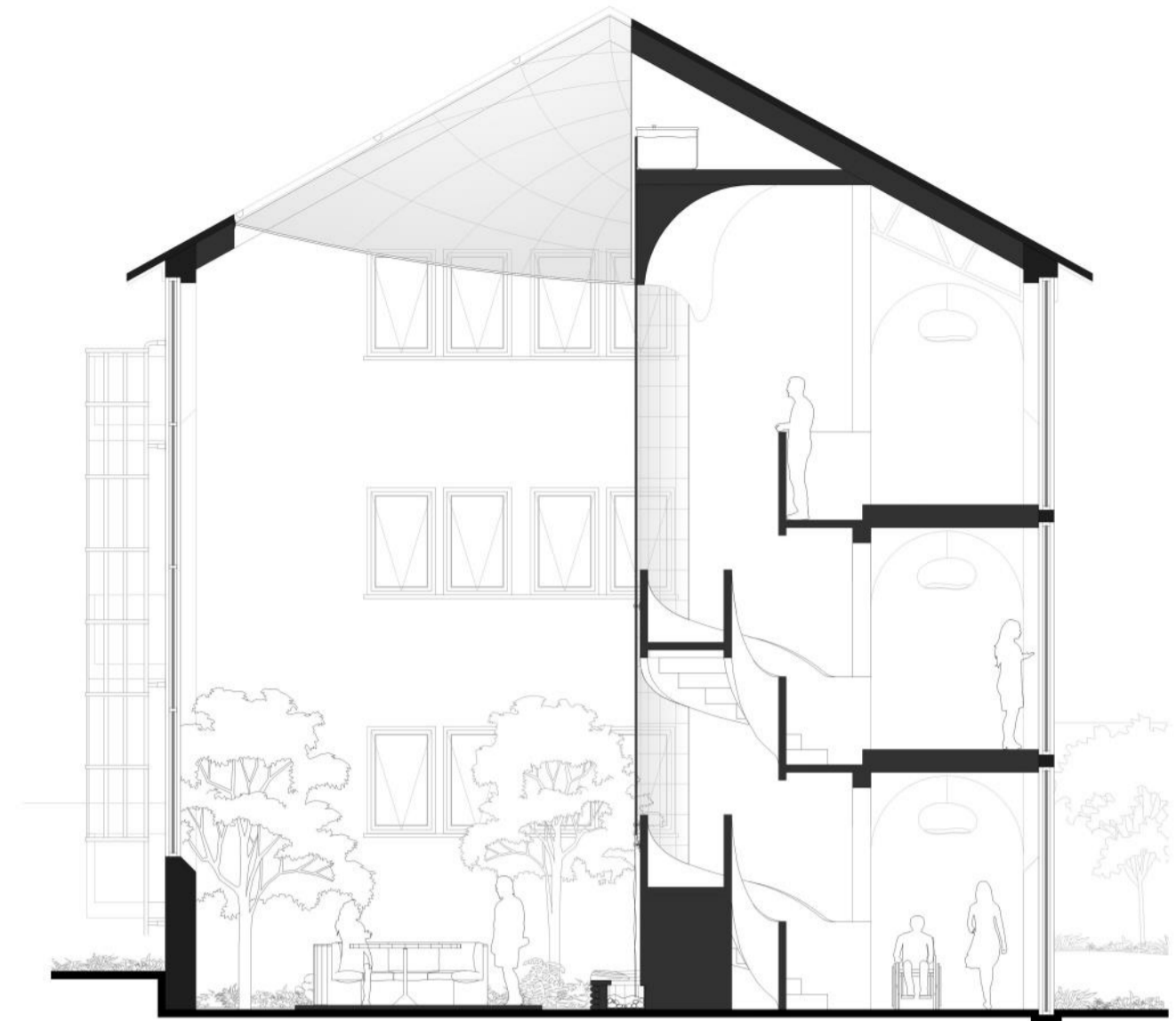
01 longitudinal section
SCALE 1:50



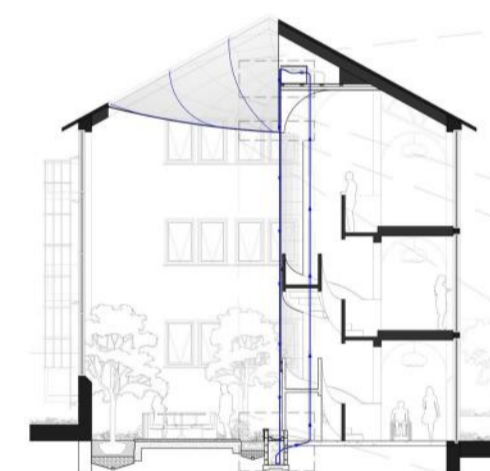


Honest materials, a canvas for students. The design emphasises cost-efficient, honest materials and a neutral palette, serving as a canvas for students to personalise their spaces. Unlike many accommodations that prohibit wall decorations, this building features cork-lined walls in bedrooms, common areas, and circulatory spaces. This allows students to decorate freely, fostering a sense of ownership and enabling them to stake their territory.

At the heart of the accommodation, a full height void through the building welcomes tenants into an indoor garden oasis. Filled with local flora, this **tranquil** space can both be inhabited and immersed, and serves as the serene backdrop for study desks in adjoining bedrooms. Above, a drooping acrylic skylight basin funnels Sligo's rainwater into a mesmerising, curved waterfall. This cascade itself is a stunning visual, and produces **calming**, produces calming ambient white noise. The waterfall also gracefully veils the accommodation's central spiral staircase, which connects the entrance and various socialising spaces to the individual apartments. In shrouding the staircase, the waterfall ignites a sense of **wonder** and **curiosity** for those moving to and between rooms. It also serves as a visual barrier between circulatory spaces and bedroom windows.



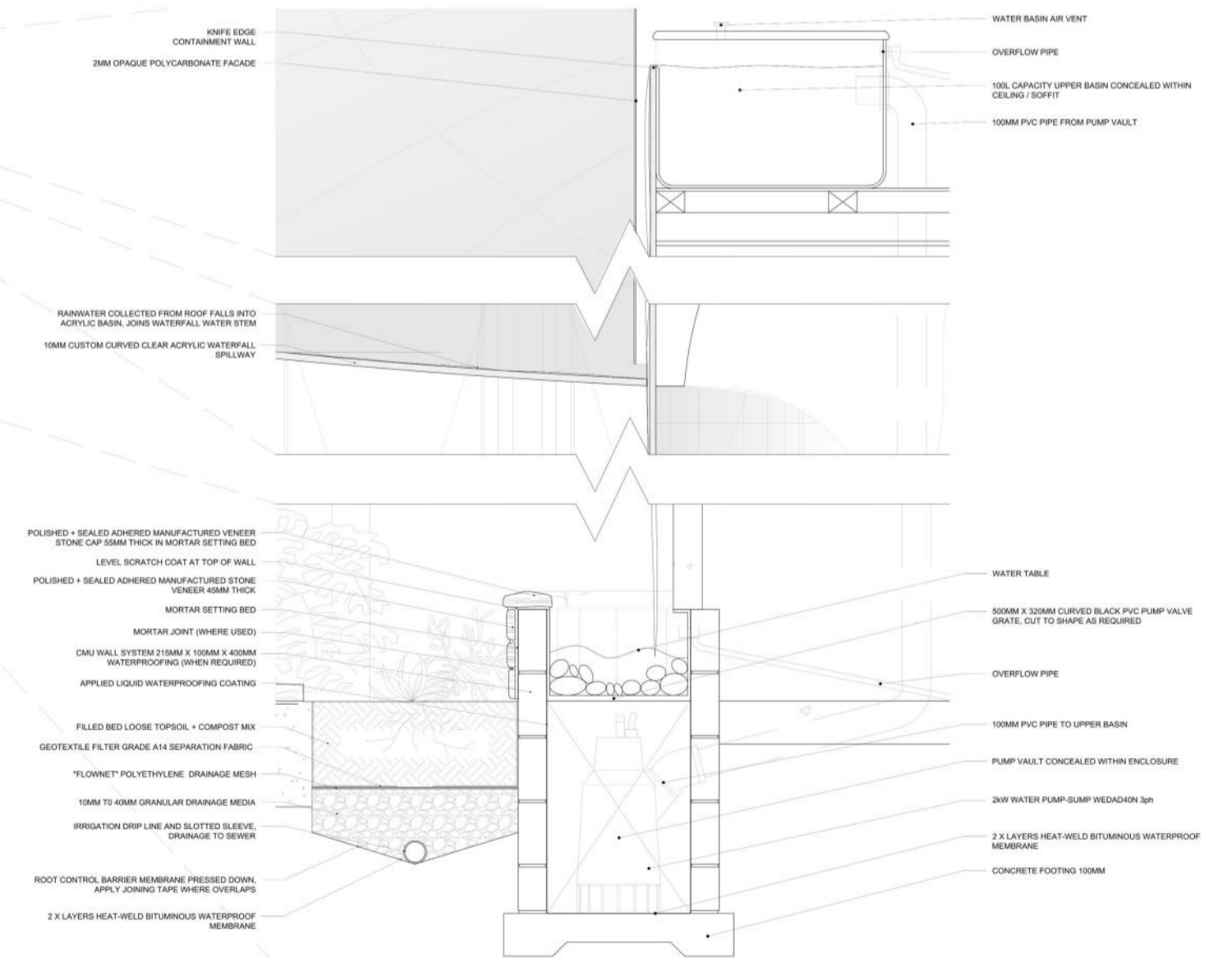
03 cross section
SCALE 1:50



key space - section
SCALE 1:100



3D visualisation



detail study - section
SCALE 1:10

Waterfall Detail Study