

Brief

"A city is a place where people meet to exchange ideas and goods. Architecture is the stage where that life unfolds, and it must be as flexible and sustainable as life itself." — Richard Rogers

This project proposes a Regenerative Urban Organism. In an era where digital retail is purely transactional, this building serves as a 'Sustainable Machine' - a 24/7 ecosystem that restores the human touch through sensory craftsmanship, communal ritual, and radical environmental responsibility.

It is designed for the curious and the conscious, this space is a sanctuary for those who seek to connect, inspire, and be inspired. It serves the seeker of unique craft and the student of new skills, providing a "Third Place" to gather without the pressure of the purchase. By extending over the adjacent street to shelter a local flea market, the design bridges the gap between high-concept retail and Sheffield's authentic street culture, supporting the city's vision for a greener, more social Fargate.

The building functions as a living machine through three core pillars:

- **Tactile Craft:** An open artisan workshop and vertical garment lift system make the "birth" of a product visible, audible, and real.
- **Kinetic Flexibility:** A 24/7 program where retail racks retract after 6 PM, transforming the store into a communal "Free Zone" for yoga, study, and art.
- **Ecological Responsibility:** A self-sustaining infrastructure powered by solar energy, rainwater harvesting, and greywater recycling.

In order to replace the "flatness" of online shopping with a three-dimensional theater of life 9 Fargate is not just a place to buy; it is a place to belong - a sustainable landmark where the weight of fabric and the warmth of community signify a return to what is real.



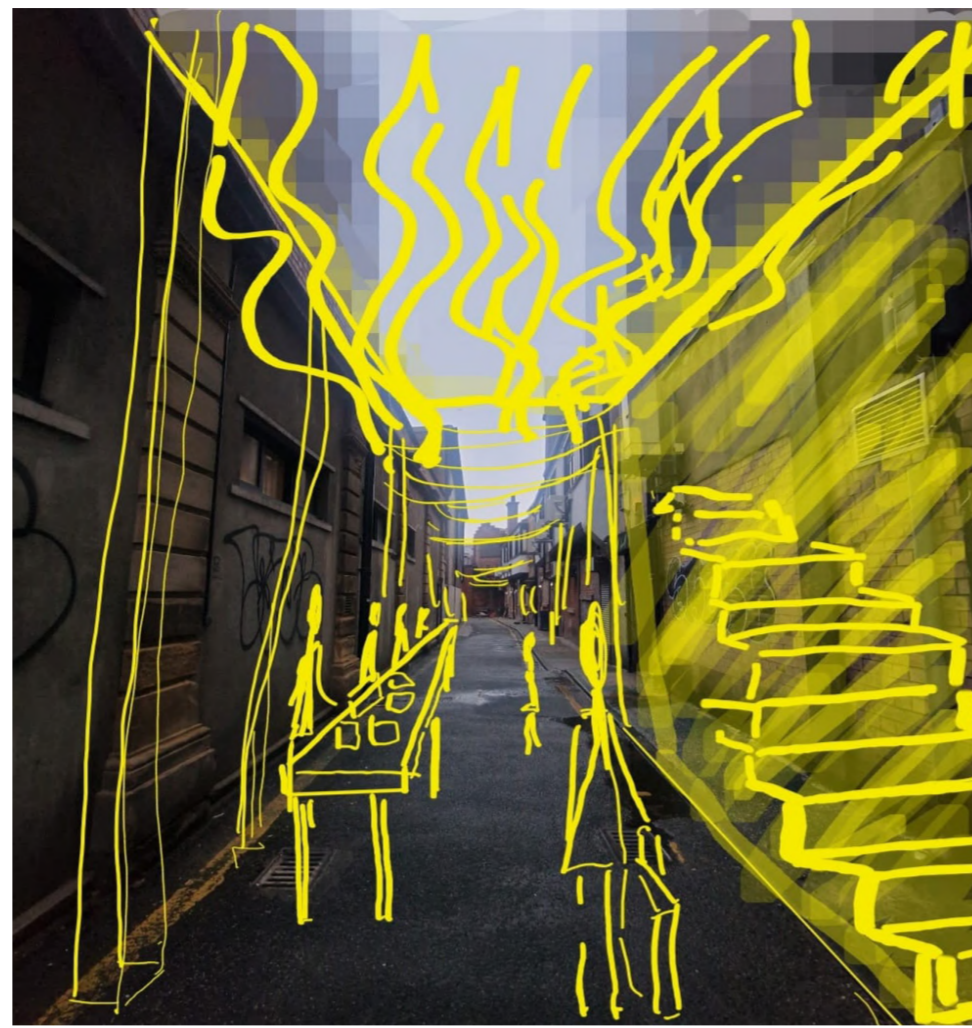
Add greenery on unused surfaces around



Add seatings in the end of the street



Add small "secret" paintings around to create a feeling of mystery and attract people to search for them. Add new drawing every now and then.



View from Fargate into Black Swan Walk. The proposal is to create seasonal makers market with canopy above to protect from suden rains, tables for the goods and shown possible staircase on the right for the Fargate 9 building.



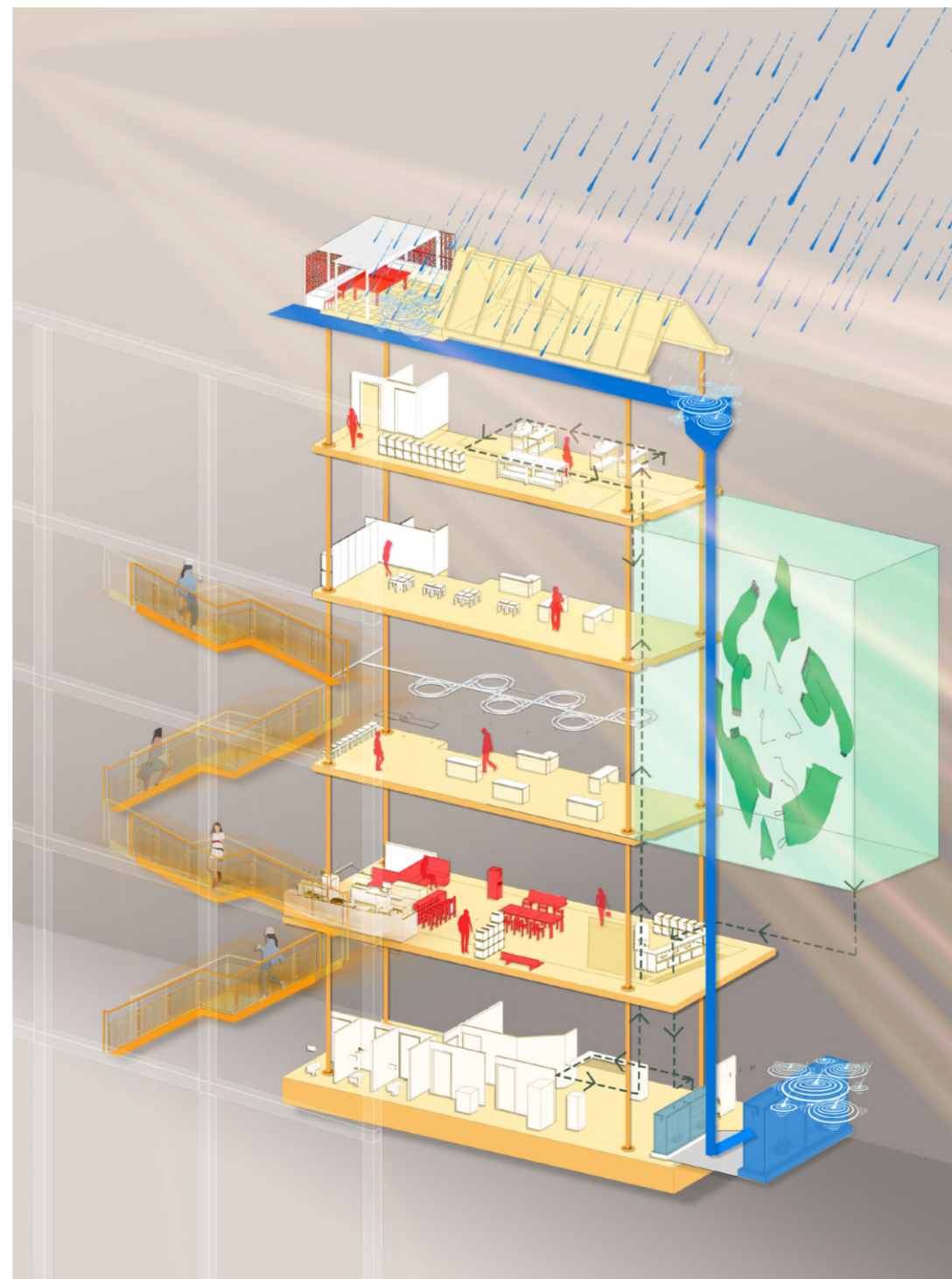
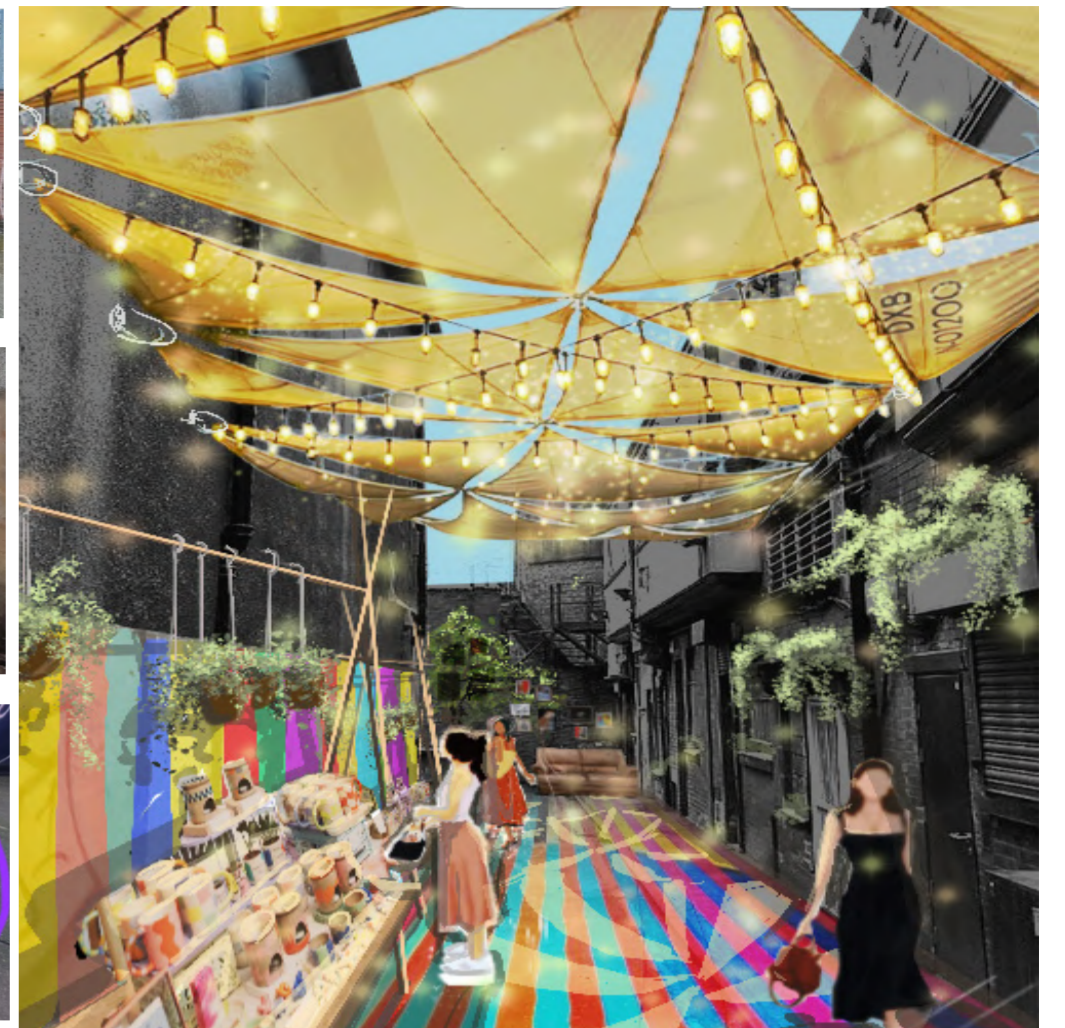
Enclose the rubbish bins behind wooden panels with an air freshener



View to Fargate street from Black Swan Walk



Make a circular drawing, the sun from Rapunzel fits perfect



MATERIAL BOARD

Concept



Sustainability & Flexibility

Sustainability has transitioned from a choice to a fundamental requirement. This project achieves operational autonomy through dual-modality solar arrays and a comprehensive water management strategy featuring rainwater harvesting and greywater recycling. Designed for circularity, the building utilizes materials that can be fully reclaimed at the end of its lifecycle. By facilitating a diverse program of activities, the structure evolves from a traditional retail outlet into a 24/7 social hub. This constant activation revitalizes the Fargate area, embodying Jane Jacobs' principle that "a well-used city street is apt to be a safe street," ensuring the precinct remains secure through continuous public presence.



Experience

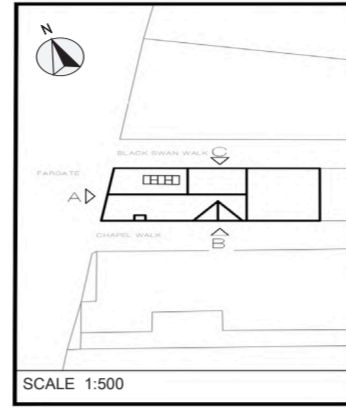
The project redefines the traditional retail model by introducing a transparent "open workshop" where the lifecycle of a garment is on full display. This immersive environment evolves throughout the week: weekdays focus on visible craftsmanship, while weekends activate the space through public workshops and private tuition. The ground floor serves as a multi-sensory exhibition hub where textiles are not merely viewed, but felt, smelled, and heard. This tactile engagement is punctuated by a building-wide acoustic signal; every time a garment is completed, a chime resonates across all levels - a celebratory announcement that another liter of water has been conserved through the upcycling of reclaimed materials.



Connections

The project transcends the limitations of commercial architecture by prioritizing inclusive urbanism. Recognizing that the modern city can be an exclusionary or overwhelming environment, the ground floor is programmed as a high-comfort, low-stimulus "Third Space." This creates a "soft threshold" for the Fargate area, allowing individuals to occupy the building without the pressure of a commercial transaction. By integrating seating for laptops, reading nooks, and tea service, the building fosters "passive sociability"—the ability to be among others while maintaining personal boundaries. This transforms the site from a retail destination into a connective tissue that links the physical street to a collective intellectual life.

PROPOSED SIDE ELEVATION

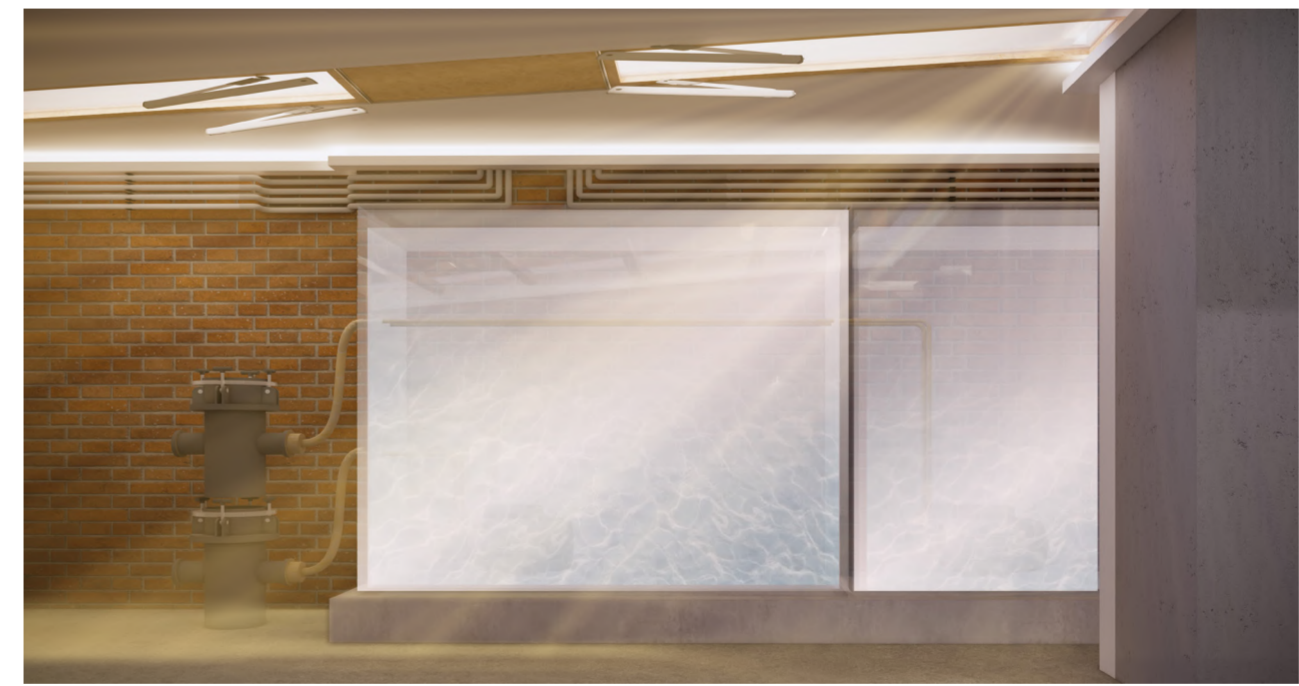


14

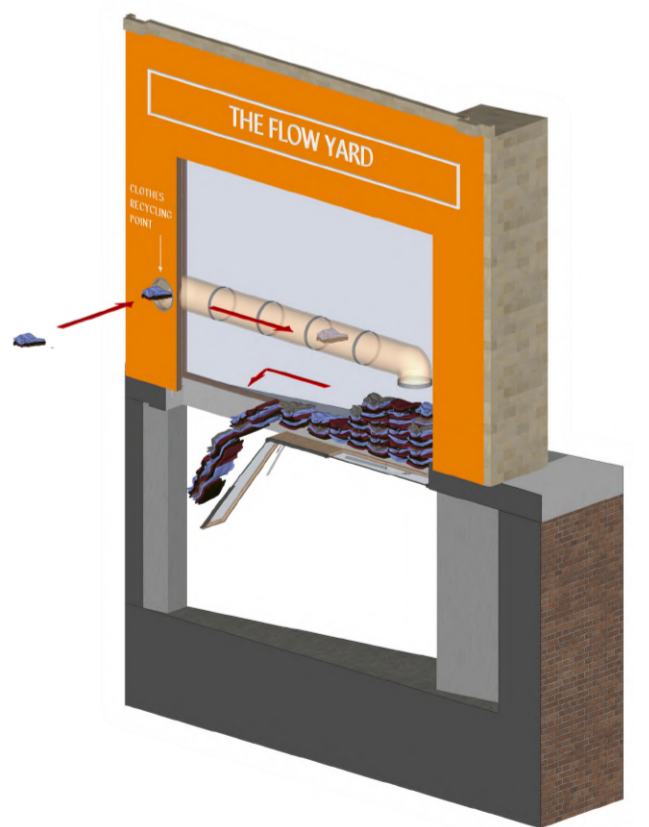


- 01 ENTRY POINTS
- 02 WORKBENCH FOR QUICK REPAIRS
- 03 PARTLY ENCLOSED SOFA
- 04 COMMUNAL TABLE
- 05 EXTENSION STAIRS
- 06 OPEN SOFA WITH WATER COOLER
- 07 LIFT
- 08 WAITING AREA FOR ORDERS
- 09 CAFE
- 10 STAIRS TO THE BASEMENT

02 GROUND FLOOR PLAN



WATERTANK AND GREYWATER SYSTEM



04 SORTING CLOTHES AND SENDING THEM UP TO THE THIRD FLOOR FOR REPAIRMENT



GROUND FLOOR OVERVIEW



BUBBLE TEA AND SANDO'S CAFE



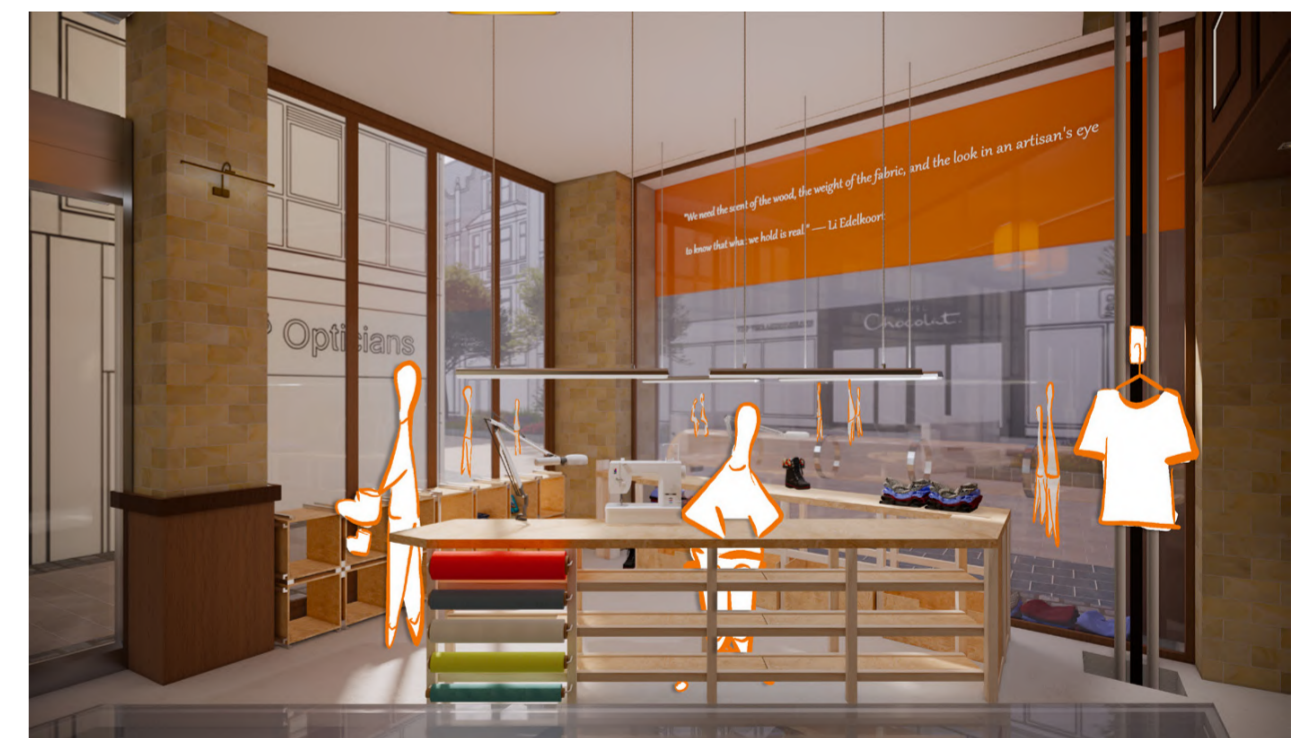
VIEW ON THE STAIRS



GROUND FLOOR OVERVIEW FROM THE INSIDE TO THE FARGATE STREET



LAMP THAT COUNTS HOW MANY CLOTHES WERE MADE AND LIGHTS UP EVERY TIME SMTH NEW IS MADE

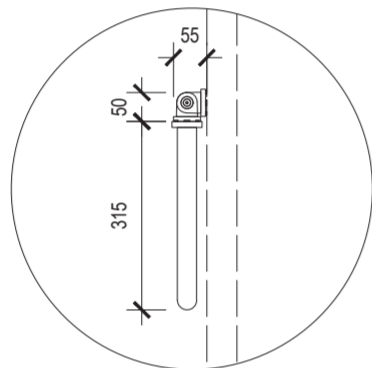
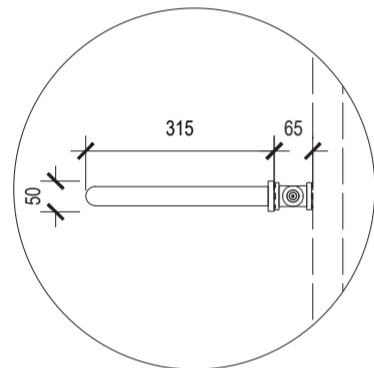
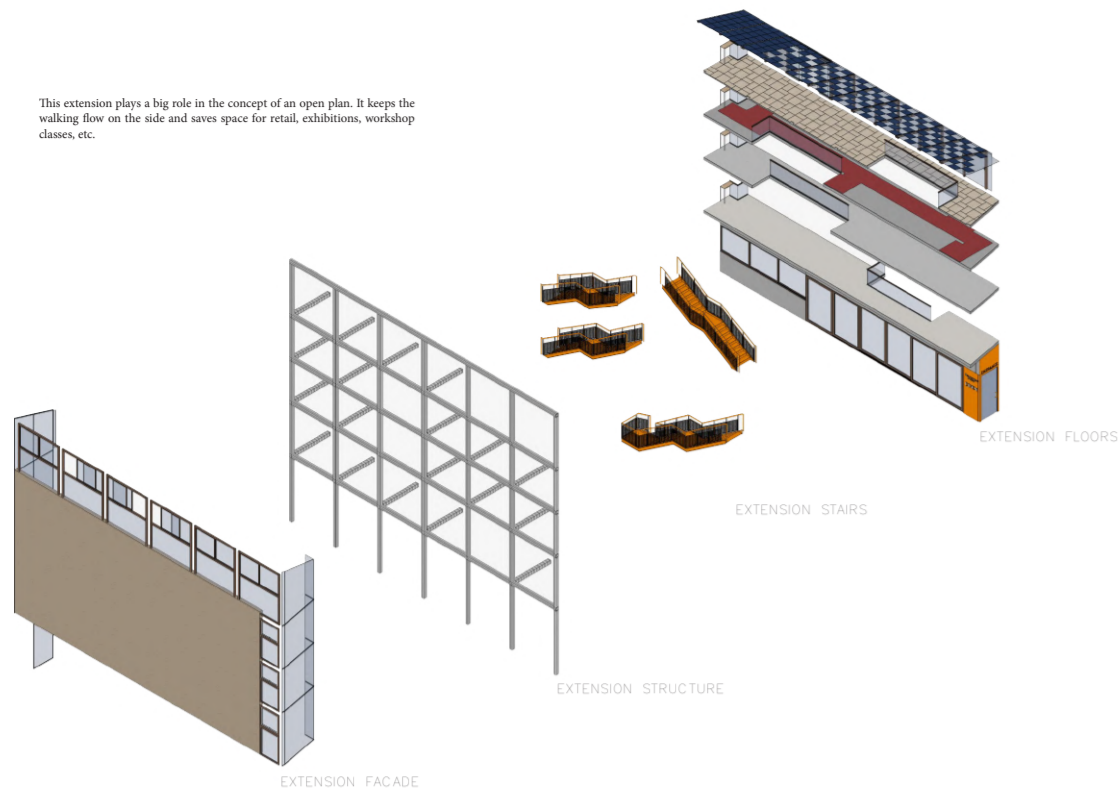


WORKBENCH FOR QUICK REPAIRS



STAIRS DETAIL

This extension plays a big role in the concept of an open plan. It keeps the walking flow on the side and saves space for retail, exhibitions, workshop classes, etc.



BACK HORIZONTAL 1:10

FRONT VERTICAL 1:10

