

The Neighbourhood

Accommodation

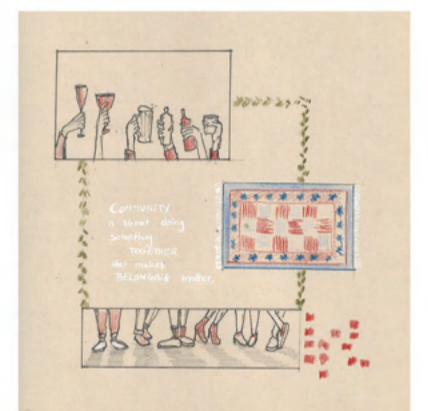
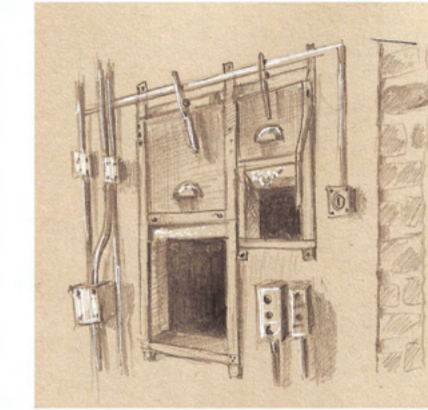
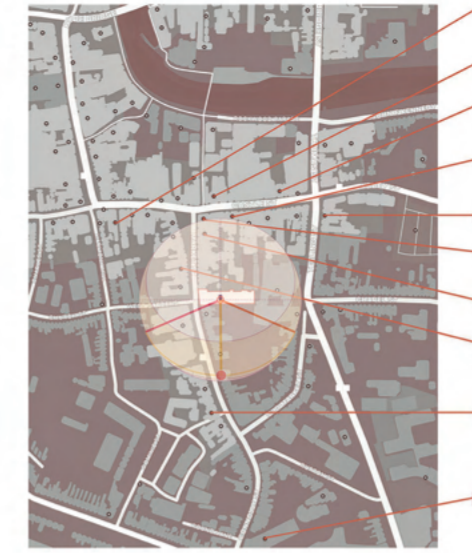
Community Hub

Urban garden

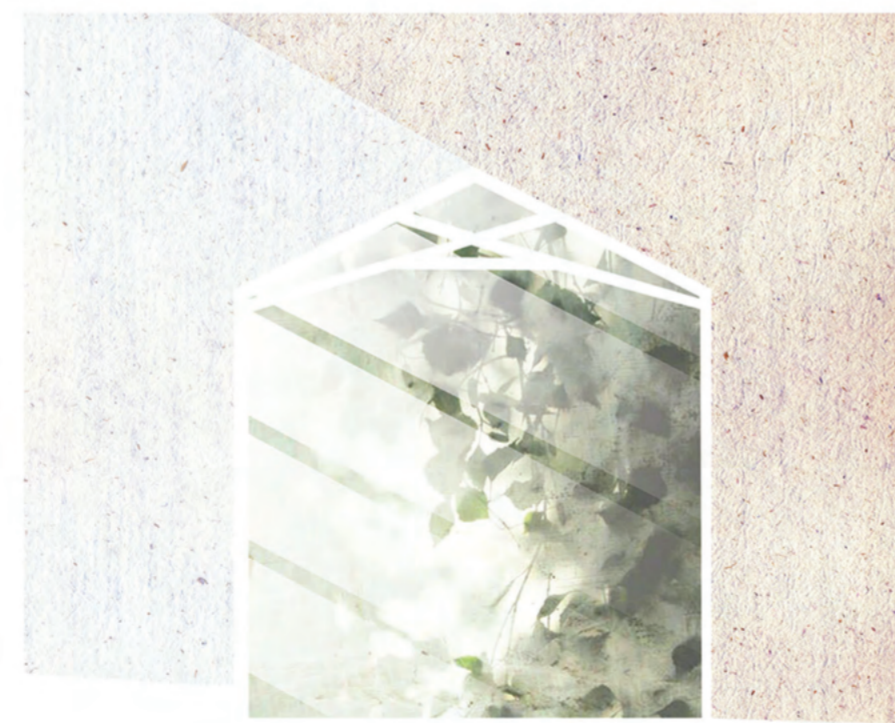
The Neighbourhood is a transformative hotel concept that celebrates togetherness and ecological connectedness between people, nature, and the site. Located in the old Savoy cinema in the heart of Sligo town, the design draws upon an ideological approach to a greener and more connected urban environment and the desire for a sustainable shift in the hospitality sector.

Addressing climate emergency is not merely about how we build and how we use energy, it is a problem that is rooted in our society. To resolve these issues, we need to step back and think about how the appropriate changes could be made and most importantly, how we could develop the right mindset to do so. On the thought of thinking globally, and acting locally, small changes can make a big difference and it starts with forming conscious communities.

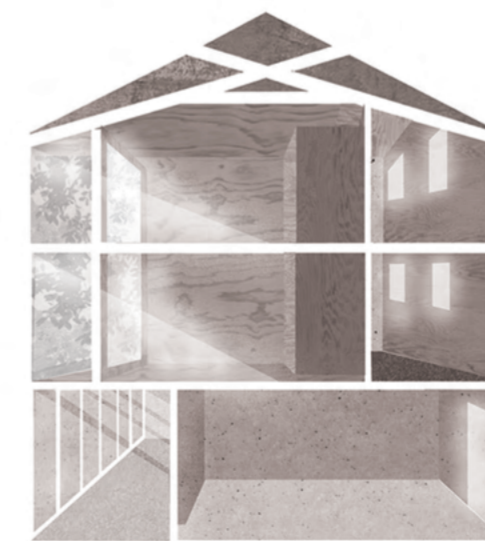
The design approach aims to create a humble background to exchange and share knowledge, and an opportunity for tourists and locals to immerse in an everyday cultural experience. I believe that place attachment combined with the biophilic approach could transform the empty shed of scattered memories into something great, where the sense of belonging is resurrected and a sense of responsibility for our environment is developed.



Implementing history and people's memories through place attachment as part of the concept



Introducing biophilic design approach and an internal greenhouse with supporting rainwater harvesting system

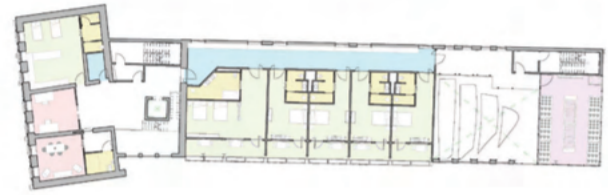


Maximizing solar gain by conscious layout decisions and large glazed areas while providing natural shading

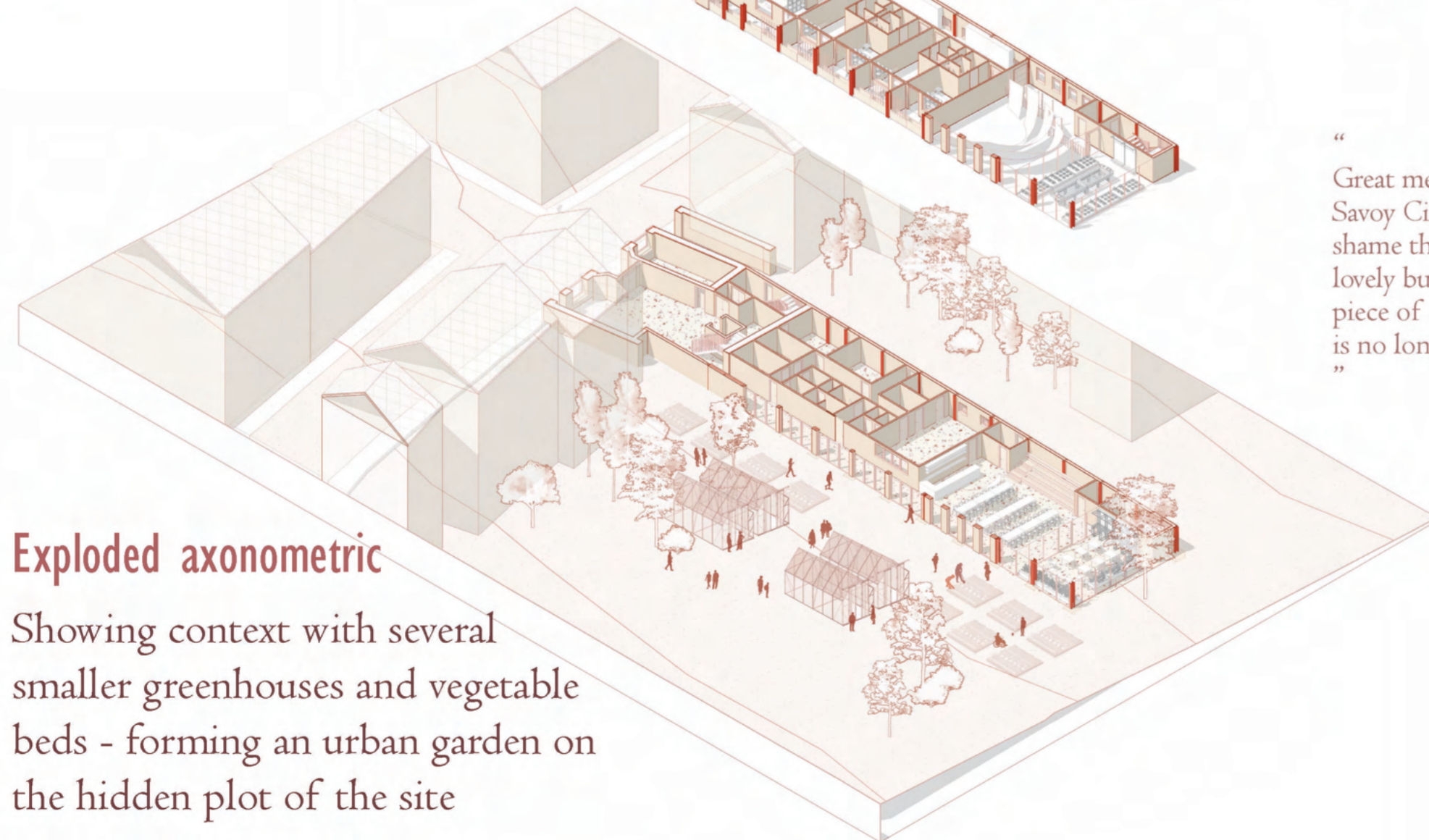
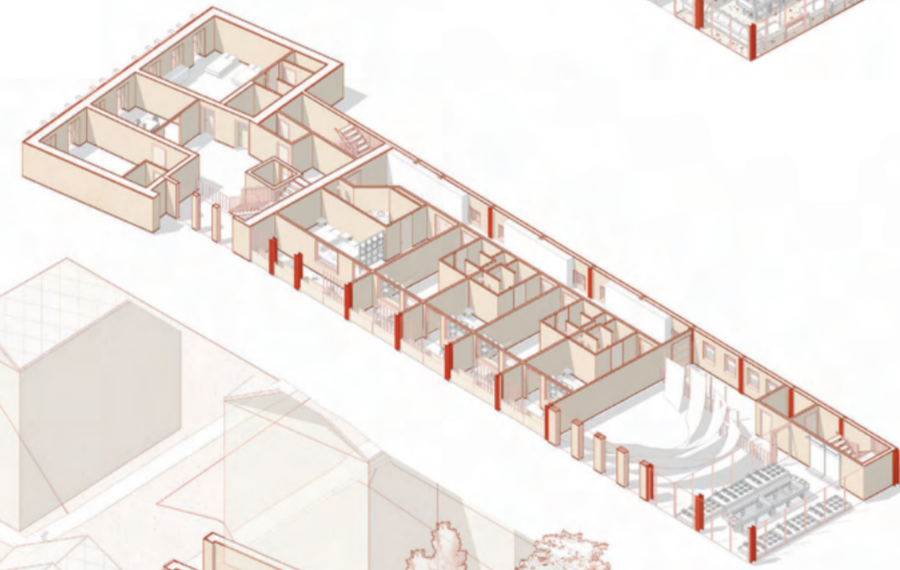
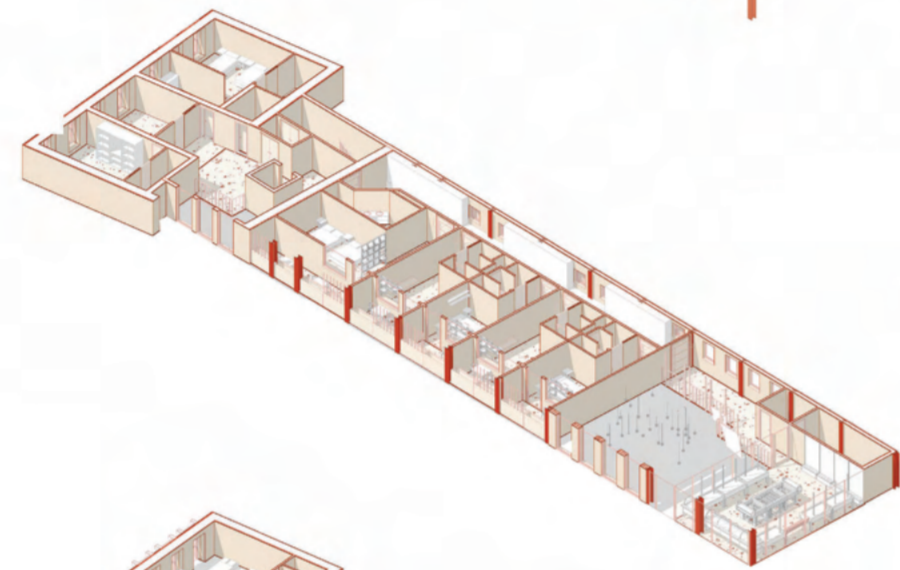
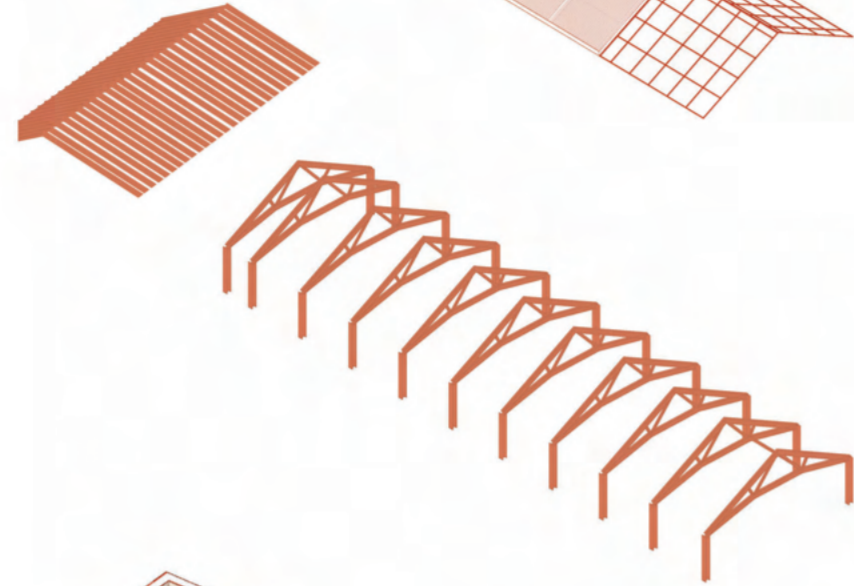
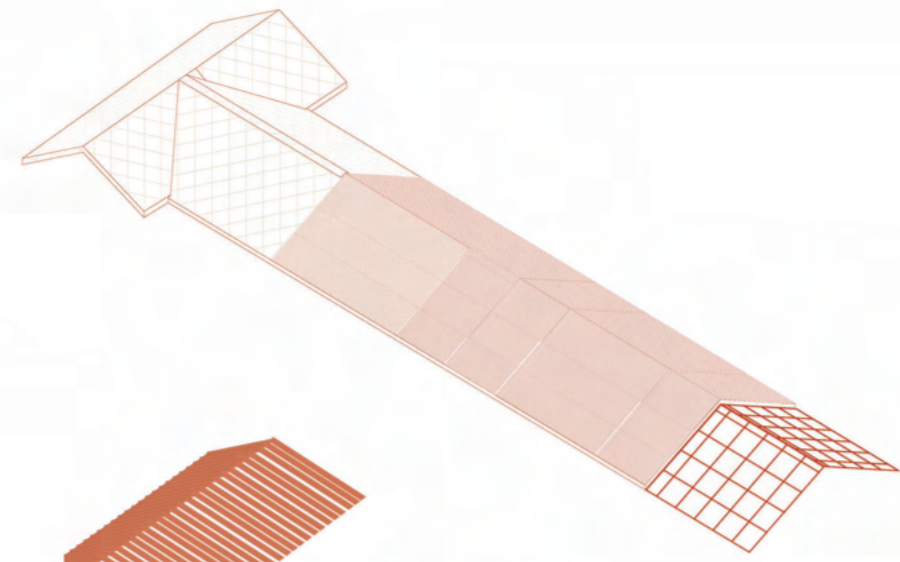


Healthy and sustainable material palette, available locally and inspired by the existing materiality of the cinema

Floor Plans



- Back of House
- Greenhouse
- Restrooms
- Rooms
- Storage
- Front of House
- Public



Exploded axonometric

Showing context with several smaller greenhouses and vegetable beds - forming an urban garden on the hidden plot of the site

“ Lots went in on their own and came home with a whole family. “

“ Upstairs had the romantic red double velvet seats. Before the show they opened the big red velvet curtains “

“ I remember fond memories, my Dad bringing me to ABBA, it was packed, everyone singing. Simple times we grew up in... “

“ Loved how the projectionist would play his favourite songs over the PA system before the show. “

“ Great memories of the Savoy Cinema. Such a shame that another lovely building and a piece of Sligo history is no longer there... “

Materiality of the original building - used throughout the new design - with the implications of recycling/reusing when possible



Corrugated iron



Concrete



Limestone



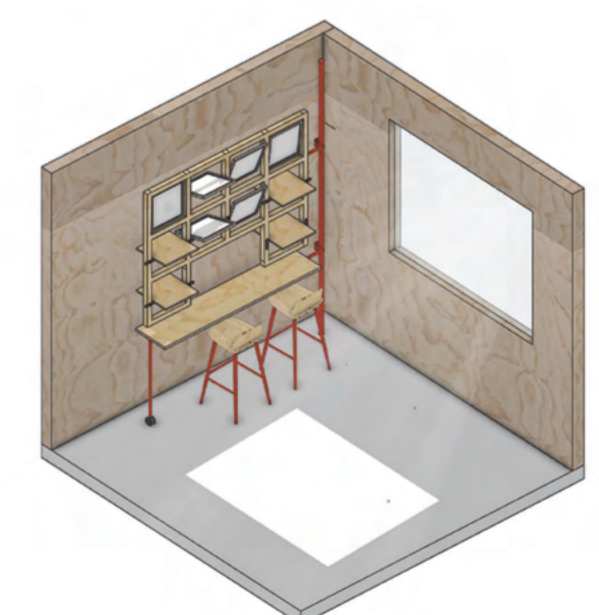
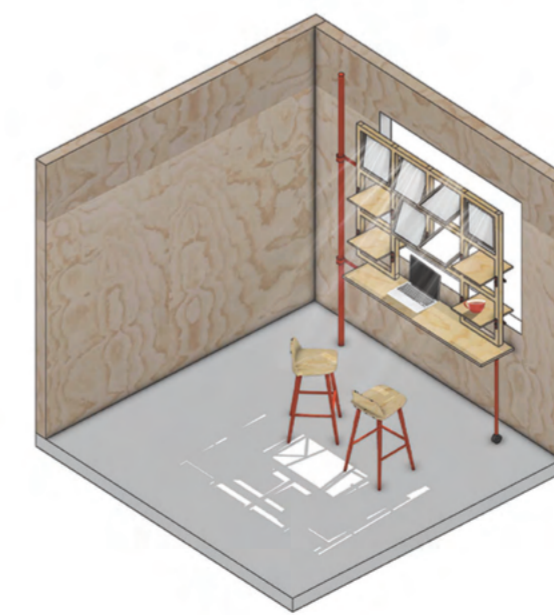
Brick



Timber



Room with balcony

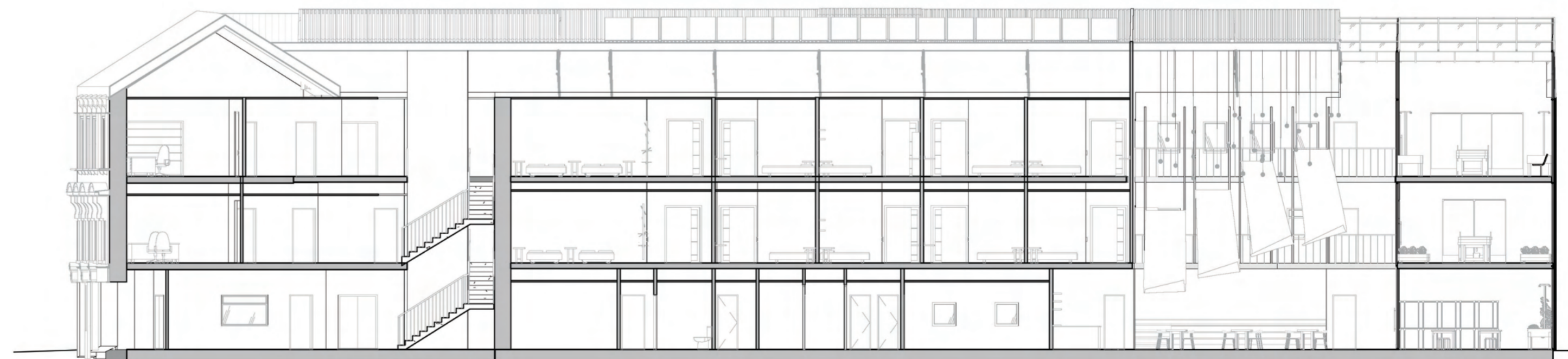


Playful frames serving as shelving/shading unit - derived from the idea of “moving frames” in cinema and film-making

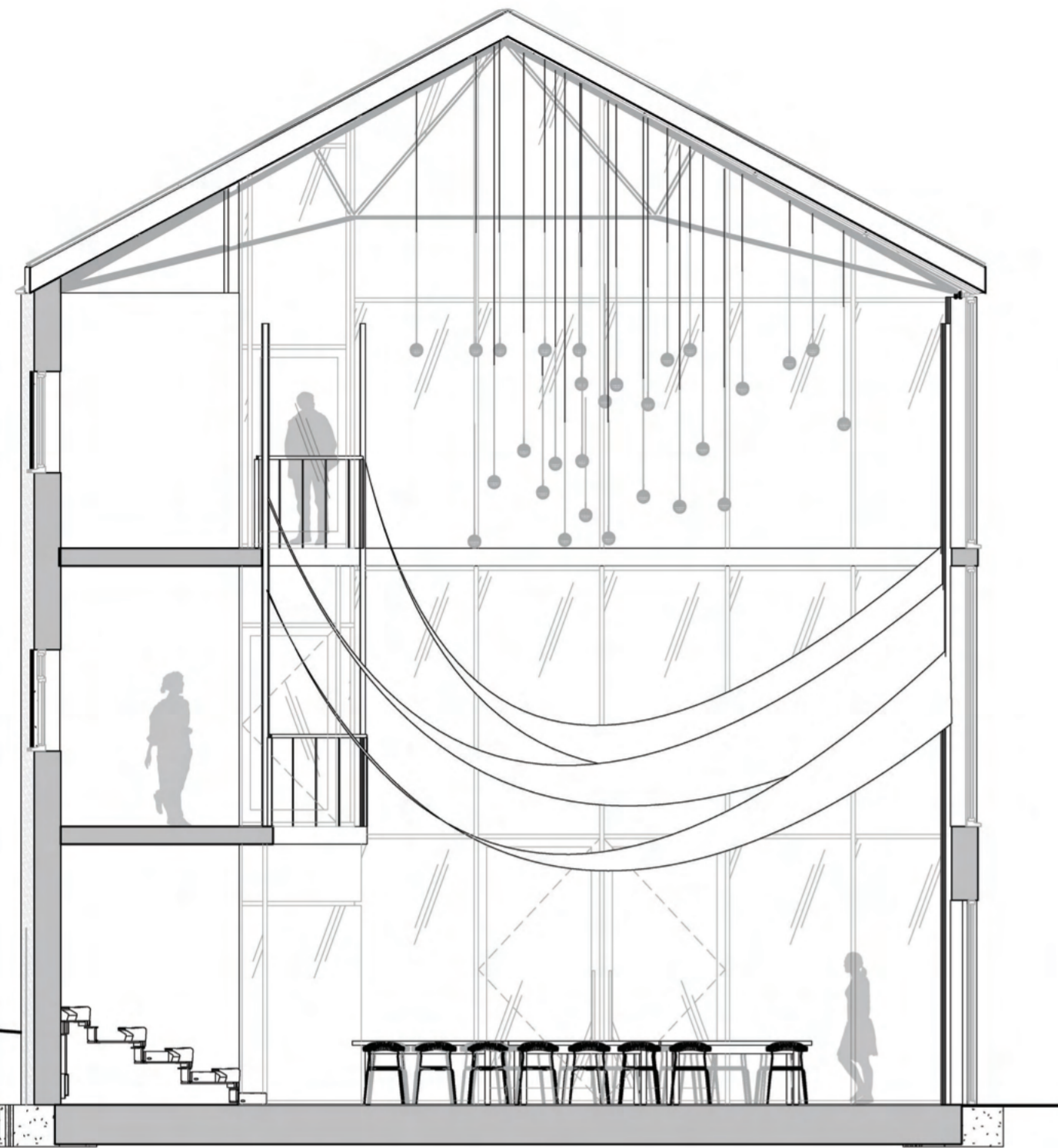


Threshold- long corridor leading to restaurant - visual connection with nature and creating rhythm with playful pivot doors

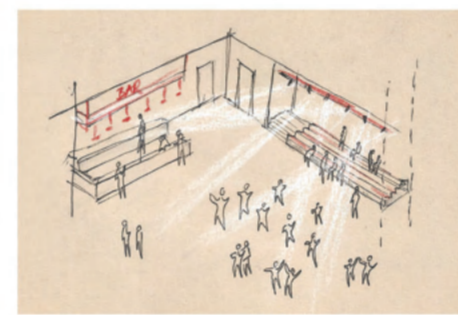
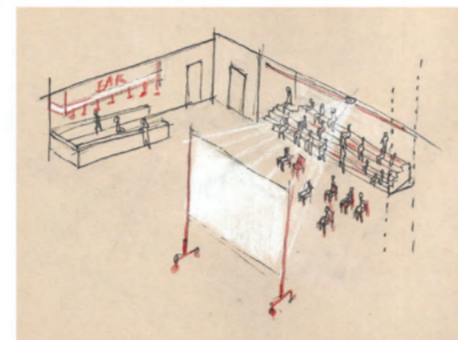
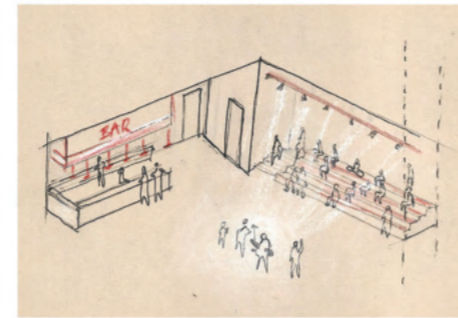
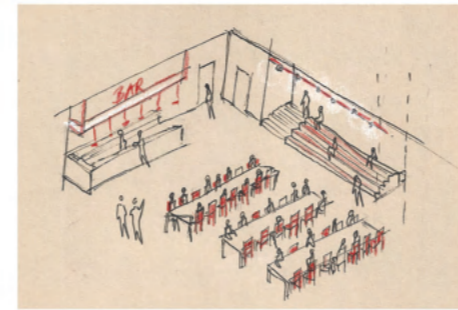
There is a lack of affordable irish restaurants in the area. By implementing an internal greenhouse alongside several vegetable gardens, the aim was to create the supporting structures for a self-sufficient restaurant that specialises in locally produced, seasonal dishes. On the Ground Floor Level of the Greenhouse, the room can be used for various workshops and educational purposes.



Longitudinal section I-200

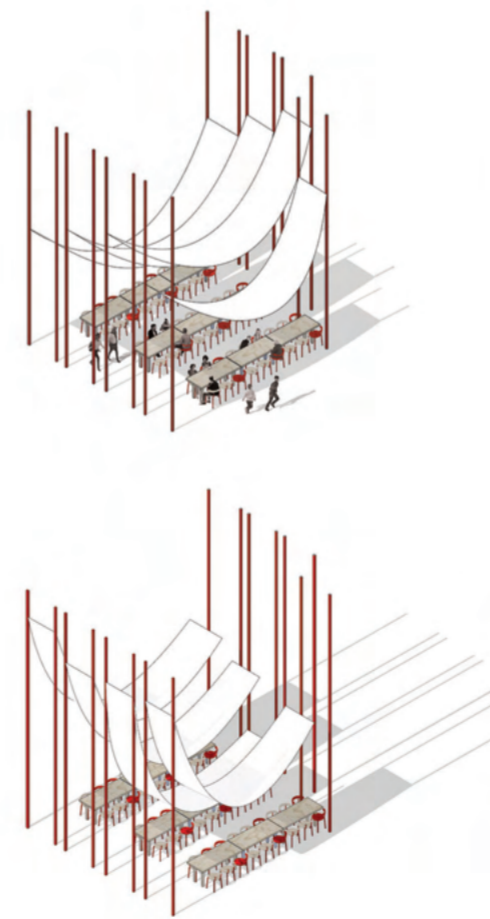


Section cutting through restaurant 1:100



Cinema Hall - Restaurant/Community Hub

The Cinema Hall is a customizable space that can function as a restaurant, performance space, movie room or an event space. The open space flooded by light and the greenhouse provide a humble background to various social activities. Inspired by the historical importance of linen in Sligo town, the natural, unbleached linen canopies act as a customizable shading system with the intention to make people feel contained.



Concept model



Night scene at Bar



Construction/demolition waste collected around the site



Waste materials crushed to be used in concrete mix as exposed aggregates



Intention to use food waste mussle shells to create a more sustainable concrete mix



>95% Calcium Carbonate - when crushed into powder, it can be used as partial cement replacement



Natural dye - iron-oxide was used with the intention to create visually engaging organic patterns



Home-made mold 100mmx100mm



Physical model on 6mm ply at the scale of 1-100

Material exploration : Hand-made colourful samples that use local waste materials and food waste to create alternative concrete mix with sustainability in mind. The top right tile shows the highest, 80%-20% mussle shell-cement ratio. As a suggestion, the materials could be implemented as tiles, furniture elements, design objects. In my project, I also used urban concrete as flooring (thermal mass) with underfloor heating aiming towards passive energy efficiency standard.