

Marchena 's First Women Clinic

Site Introduction & History

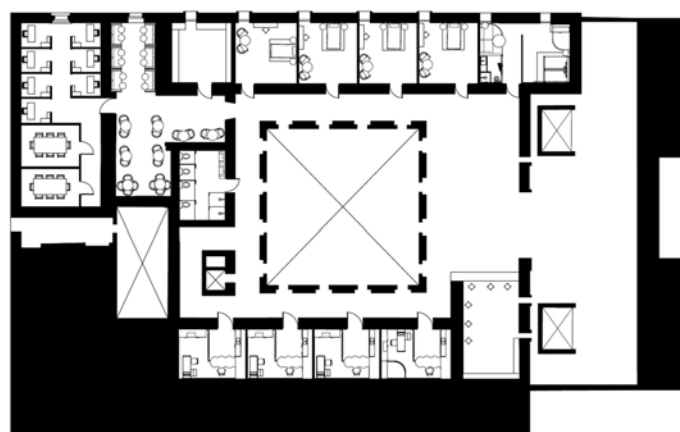
The San Jerónimo Hospital in Marchena, Spain, serves as the foundation for my women's hospital project due to its exceptional blend of historical preservation and modern functionality. Originally built in 1558 as a Jesuit college and later converted into a hospital in the 17th century, the building has long stood as a landmark of care and community (Sevillapedia, 2014). Today, after an extensive restoration by SV60 Arquitectos in 2009, the building continues to play an important role in Marchena's architectural heritage, now serving as a multifunctional cultural space (Archdaily, 2013).

Site Suitability & Location Justification

The building's adaptable layout offers an efficient framework for redesign as a specialized healthcare facility, while its location in Andalusia highlights the importance of expanding women's health services beyond major urban centers like Seville. Transforming this space into a dedicated women's hospital would significantly enhance healthcare access in a region where specialized services remain limited.

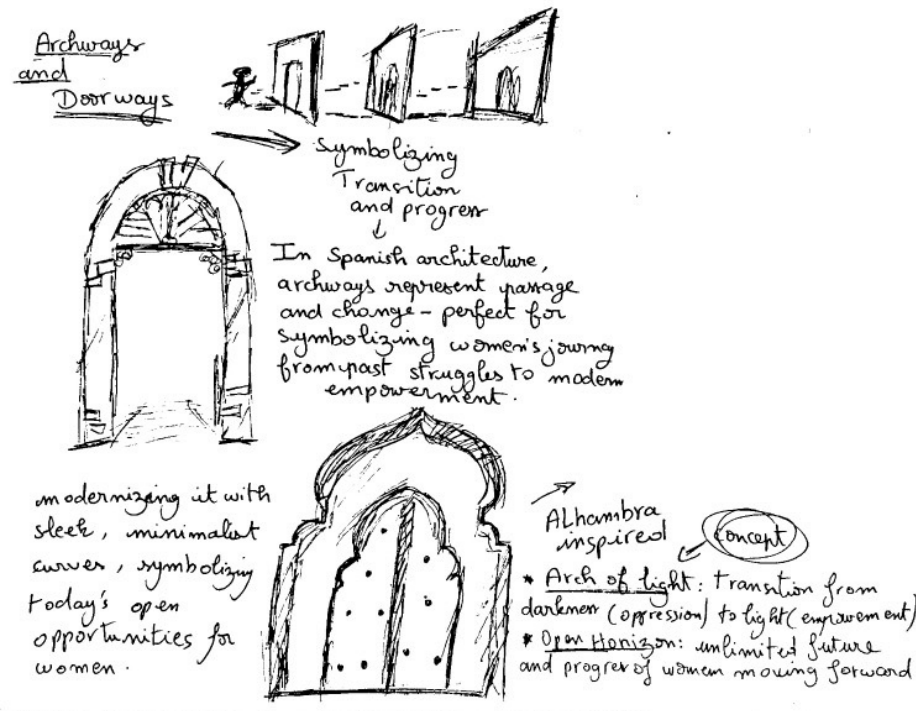


Ground Floor



First Floor

From Heritage to Healing: Framing the Concept through Place and Identity



Grounded in my location analysis, my design concept was shaped by a desire to integrate modern interventions within an existing historical structure, ensuring that the building's heritage and architectural significance are respectfully preserved.

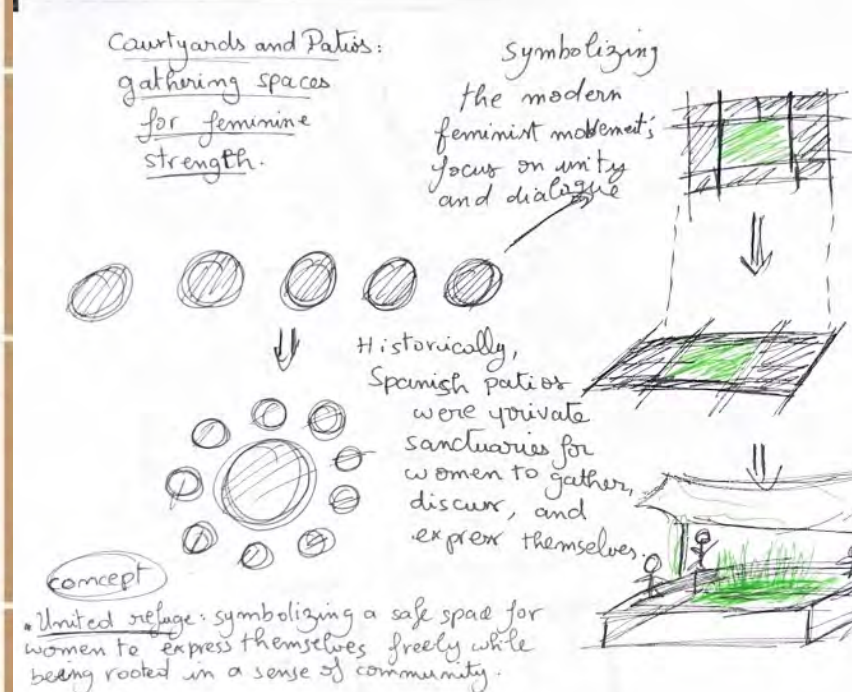
Recognizing the building's future role as a women's hospital, I aimed to create a space that is not only functional but also deeply attuned to women's specific needs and experiences.

To guide this process, I began by developing a series of word maps, using them as a foundation to explore key themes and narratives. This led me to research the history of women in Spain, both past and present, as a way to enrich my concept with authentic cultural and social context.

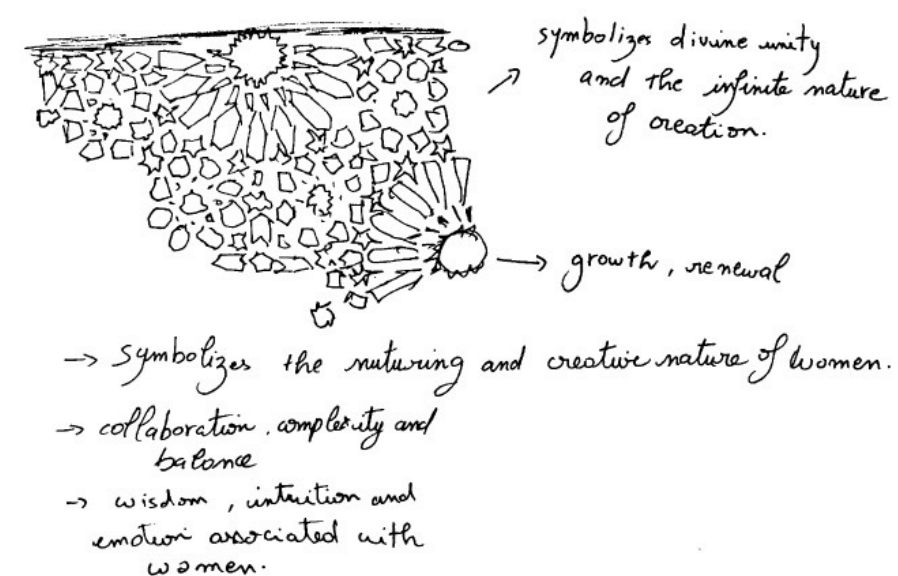
By connecting these histories to contemporary stories, I sought to create a design that embodies the evolution of women's roles over time.

Additionally, the rich architectural heritage of Andalusia — from its Gothic, Renaissance, and Baroque influences to the symbolic layers of Mudejar and Islamic architecture — informed my approach.

Andalusian architecture, known for its spiritual symbolism and cultural depth, provided a meaningful reference point for developing a space that is not only visually engaging but also emotionally resonant, offering both a sense of place and purpose for the women it serves.



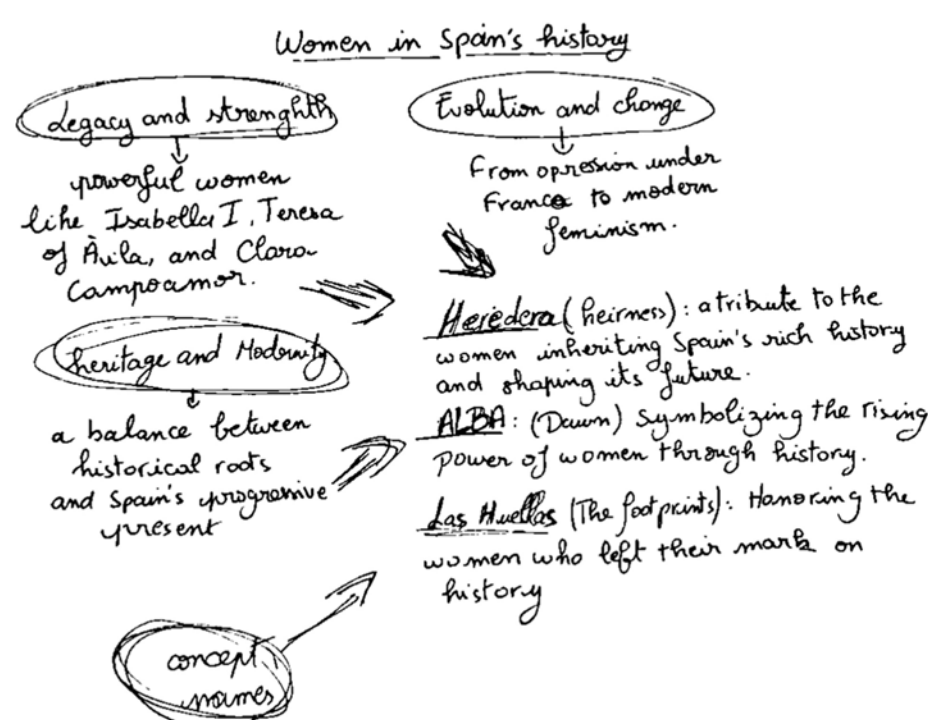
Geometric and Arabesque Patterns



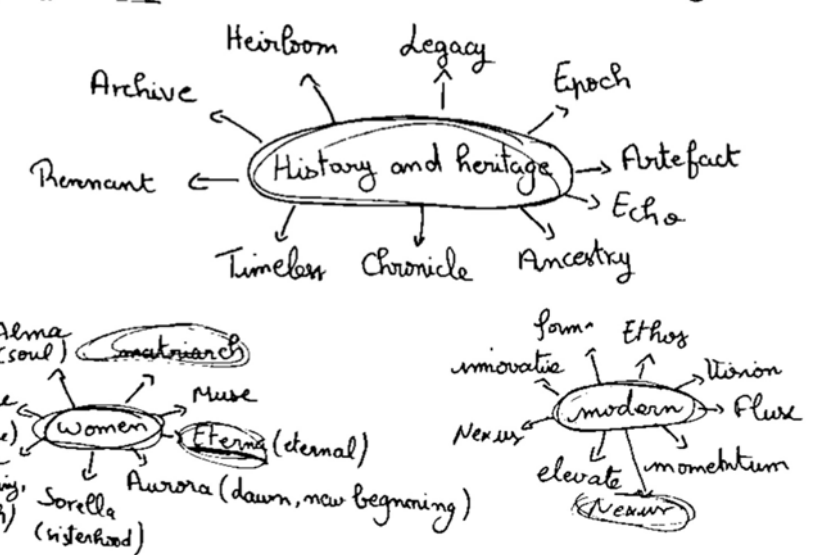
Concept

I knew from the start that I wanted my concept to be inspired by the rich history and culture of Andalusia, but I wasn't immediately sure how to shape that into a clear design direction. To help structure my thoughts, I started with a brainstorming session and created a mind map. This allowed me to break down key cultural elements—such as architecture, art, colors, and materials—and explore how they could be translated into spatial and aesthetic design choices.

Concept Board



Terna Nexus: a timeless connection between past and future
Modern Matricial: a blend of heritage and contemporary leadership.

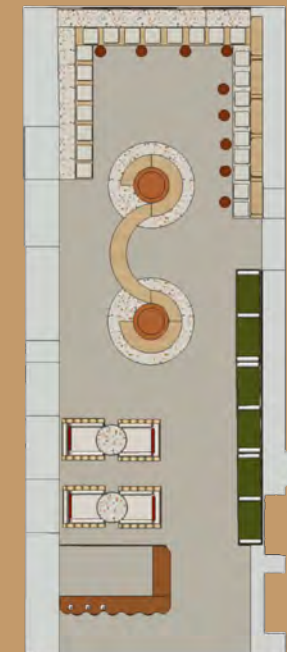


My design concept celebrates women's empowerment by weaving together the past and present, illustrating how strength, resilience, and identity have evolved over time. For centuries, women have navigated societal boundaries while forging their own paths — this journey is expressed through the dialogue between historical and contemporary elements within the space.

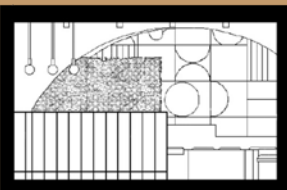
By integrating tradition with modern design, the space becomes more than an interior — it becomes a visual narrative of progress. It honors the foundations laid by past generations while embracing the bold, limitless spirit of today and tomorrow. The contrast between old and new reflects the shift from invisibility to visibility, from restriction to leadership, celebrating the enduring, adaptive spirit of women.

More than a tribute to history, this design serves as a powerful statement of empowerment — reminding us that while our roots ground us, growth is inevitable. The future is shaped by confidence, resilience, and adaptability.

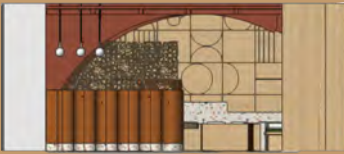
Reception and Waiting area



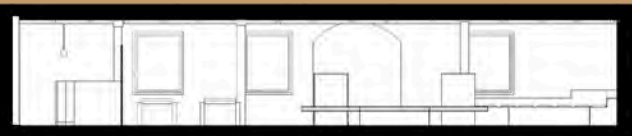
Rendered Plan



B&W Elevation A



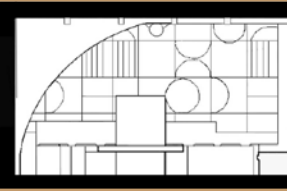
Rendered Elevation A



B&W Elevation B



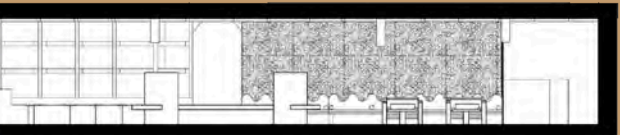
Rendered Elevation B



B&W Elevation C



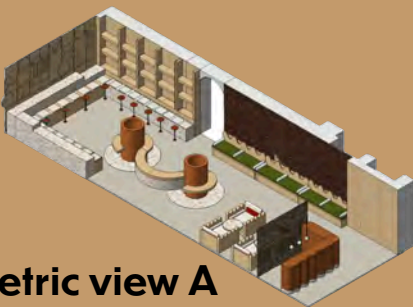
Rendered Elevation C



B&W Elevation D



Rendered Elevation D



Isometric view A



Isometric view B



The reception and waiting area is more than just an entry point—it's the first moment of care. Designed to feel open yet deeply personal, it offers women a space where they can exhale, feel safe, and know they are seen. Every detail is chosen with empathy: soft, natural textures invite touch, warm tones ease anxiety, and gentle lighting wraps the space in calm.

The architecture draws from the building's heritage—arched thresholds and textured walls echo stories of the past—while bespoke seating clusters create moments for connection, conversation, or quiet comfort. Whether arriving alone or with others, women are given space to just be: to rest, to reflect, to prepare for what's ahead.

This is a space that doesn't rush or overwhelm. It welcomes each woman with quiet dignity, offering not only shelter but a sense of belonging from the very first step inside.

Material Board



Mood Board



For the reception and waiting area, I selected materials that evoke the warmth and character of traditional Spanish architecture while creating a calm and welcoming atmosphere. I incorporated natural elements and prioritized materials that are both sustainable and recyclable, ensuring they are also practical and appropriate for the space.

Development and sketches

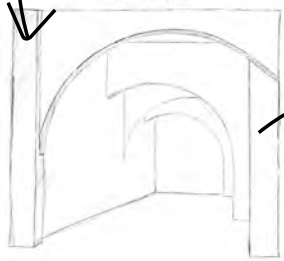
Ceiling Feature



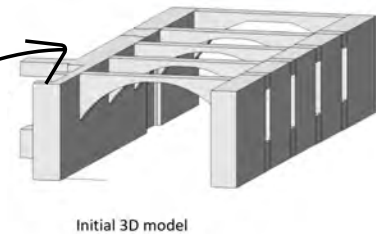
Islamic arches



Modern arches



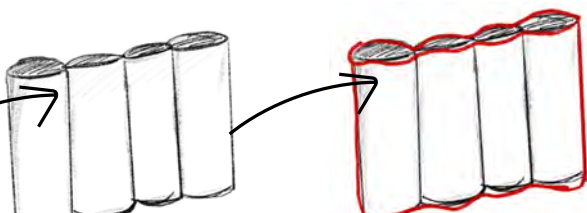
Inspired sketch



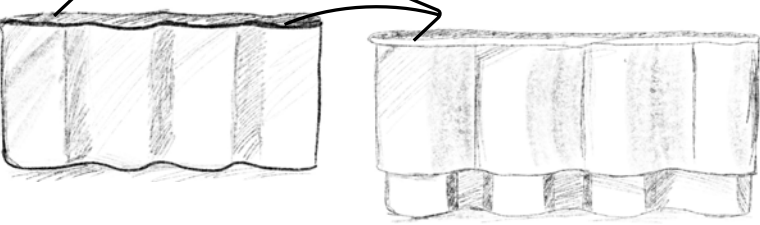
Initial 3D model

A key aspect of my concept is blending traditional elements with modern design while preserving the historical character. I felt the reception and waiting area, being a large and elongated space, would benefit from this approach. Introducing arches could help visually break up the space and add architectural interest.

Reception Desk



I drew inspiration for my reception desk design from traditional columns, but I wanted to give it a modern twist. I opted for a simpler, more contemporary interpretation of the column, focusing on clean lines and a minimalist aesthetic.

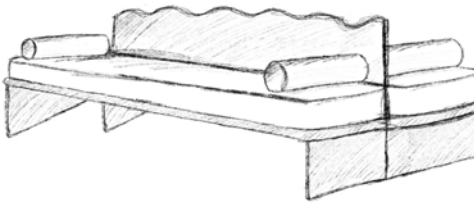
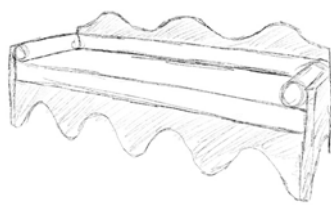


Going through the design it looked a bit too geometrical and clean which is not the look that I was looking for, so I developed the drawing more and added curvy line to have a more organic shape in order to mimic the swirly, delicate lines that can symbolize femininity.

Malak Labrini Q16005473

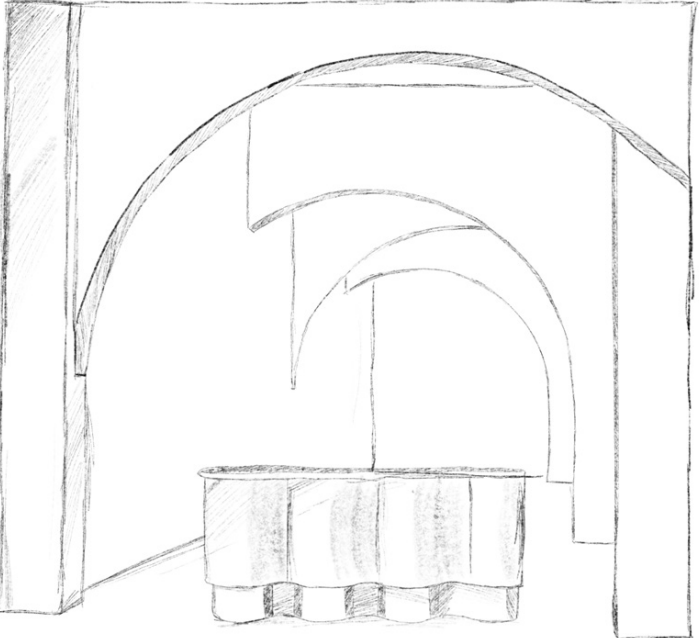


Bench Seating

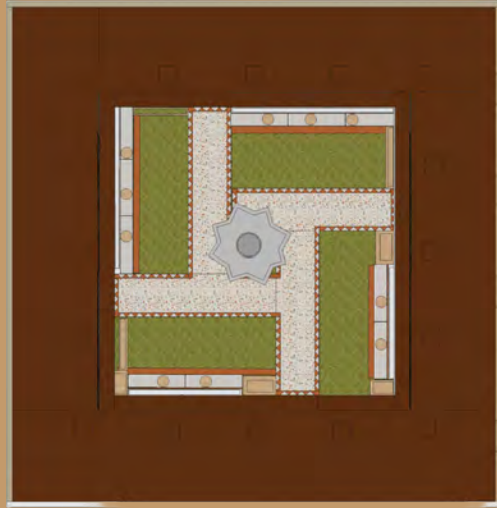


Thinking about another type of seating that I could add to the waiting area, I decided to go with a bespoke bench seating. For the design of this one I got inspired by this Spanish traditional seating, and I wanted to recreate it and add a modern touch to it.

Reception Initial Sketch



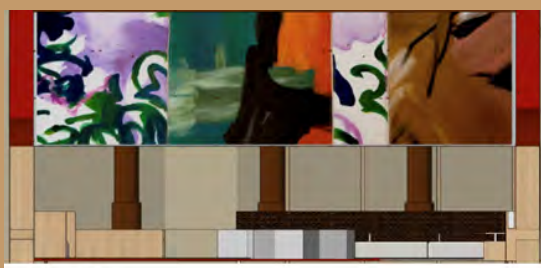
ADB611



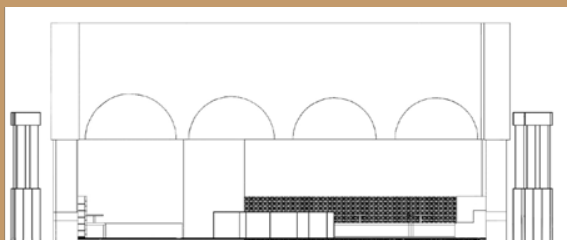
Rendered Plan



B&W Elevation A



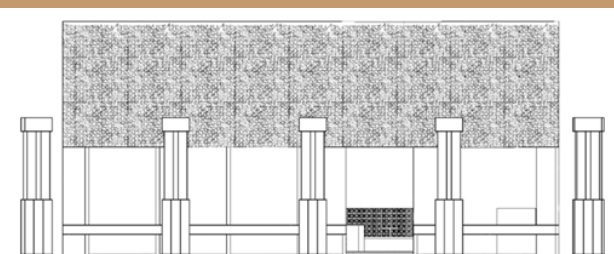
Rendered Elevation A



B&W Elevation B



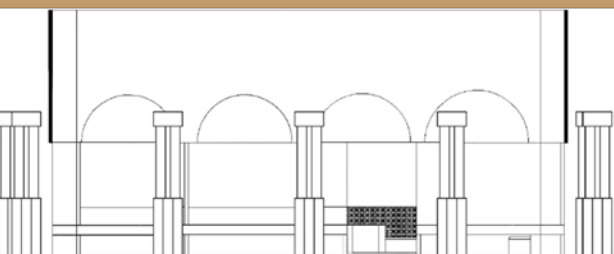
Rendered Elevation B



B&W Elevation C



Rendered Elevation C



B&W Elevation D



Rendered Elevation D



Isometric view



At the heart of the design, the courtyard serves as a serene, restorative space where natural light, greenery, and water features come together to create a calming environment. Inspired by Andalusian patios, the courtyard blends historical character with contemporary touches, offering a peaceful retreat for reflection, connection, or quiet respite. The use of tactile materials, aromatic planting, and shaded seating areas enhances sensory comfort, creating an inclusive outdoor space that supports both physical and emotional wellbeing. It becomes a symbolic space of growth and healing, connecting the building's different functions while reinforcing the theme of empowerment through nature, community, and heritage.

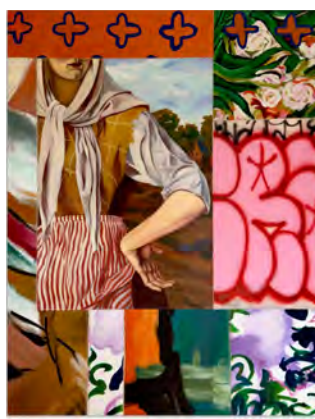
Material Board



Mood Board



For the courtyard, I selected materials that evoke traditional Spanish architecture, creating a calm, welcoming atmosphere. I prioritized natural, sustainable, and recyclable materials for practicality and suitability. Tactile materials, aromatic planting, and shaded seating enhance comfort, making it an inclusive outdoor space that supports well-being. This symbolic space of growth and healing connects the building's functions and reinforces empowerment through nature, community, and heritage. To enrich the space, I'm incorporating artwork by Spanish artist Nadia Jaber on the interior walls; her work perfectly complements the design.



Development and sketches



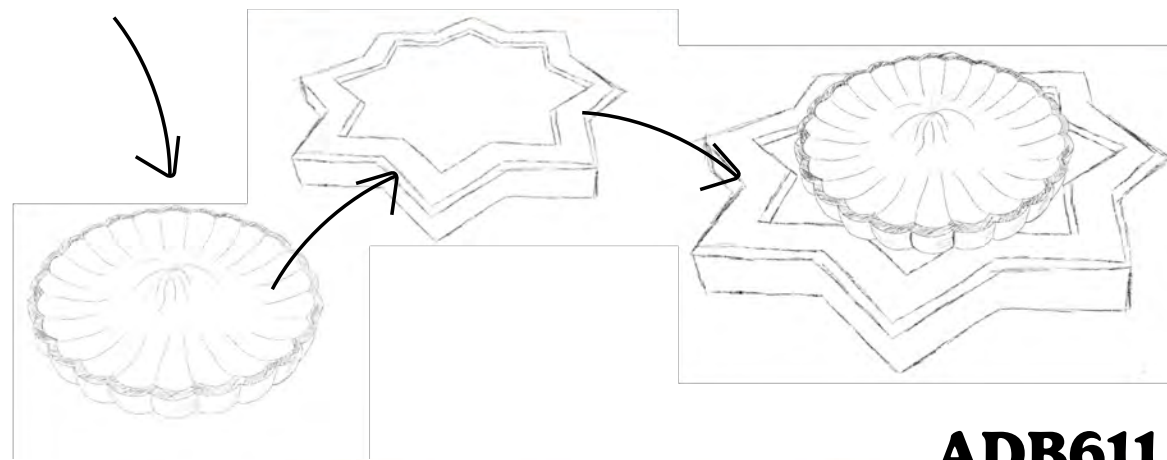
I combined various collage and sketching techniques to effectively convey my preliminary ideas for the space. This approach greatly aided me in visualizing the way colors complement each other, while also helping me to identify the specific elements I want to integrate into the design.



While exploring various design options, I was particularly drawn to these two designs that I discovered. Each had unique elements that resonated with my vision, so I decided to merge them, blending their distinct characteristics to create a cohesive and innovative final concept

One of the key elements I planned to incorporate into the courtyard design is the fountain. It serves as a central feature, not only enhancing the aesthetic and tranquil atmosphere but also symbolizing a sanctuary for women. The presence of water represents serenity, renewal, and a deep connection to nature, making it an essential component in reinforcing the space's purpose as a place of refuge and empowerment.

Courtyard



Café



The café is envisioned as a warm, inclusive space where patients, visitors, and staff can gather, relax, and reconnect. Inspired by the vibrant social culture of Andalusia, the design incorporates natural textures, earthy tones, and soft lighting to create a welcoming and nurturing atmosphere. Contemporary furniture sits alongside traditional elements, like patterned tiles and arch details, blending comfort with cultural heritage. More than just a place to eat or drink, the café encourages moments of pause, social interaction, and community-building—supporting the overall wellbeing and empowerment of women within the hospital environment.

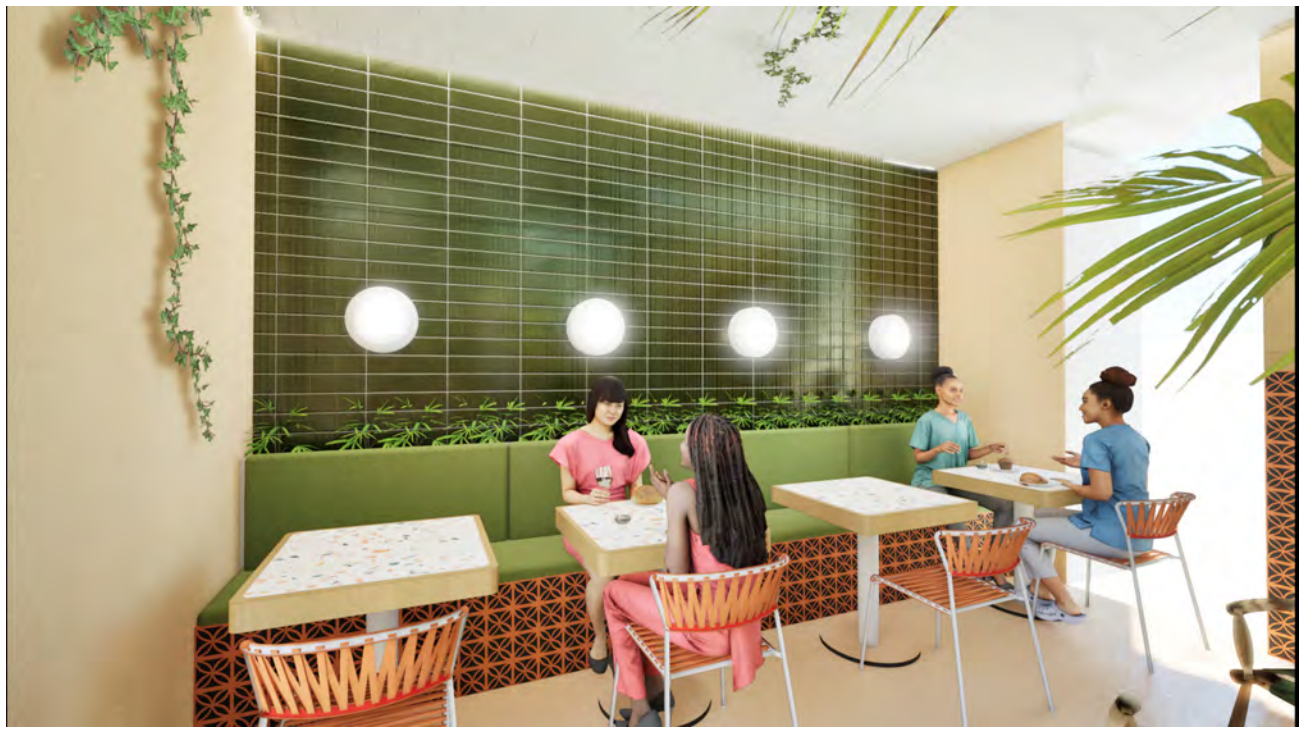
Material Board



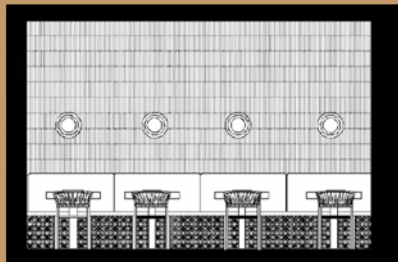
Mood Board



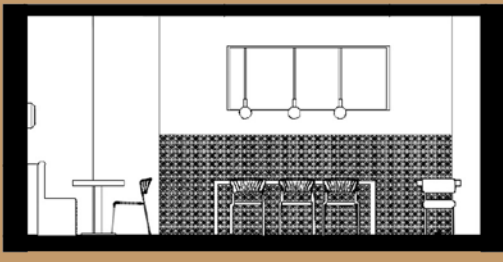
The café design incorporates natural textures, earthy tones, and soft lighting to create a welcoming and nurturing atmosphere. Contemporary furniture is blended with traditional elements such as patterned tiles and arch details, grounding the space in cultural heritage while offering comfort.



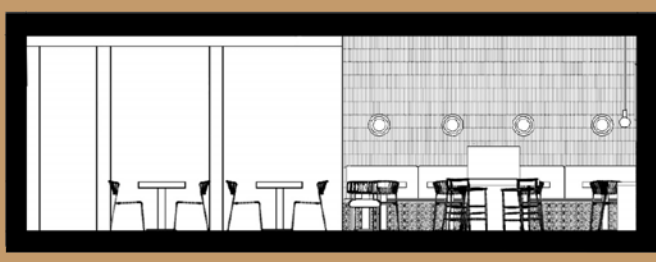
Rendered Plan



B&W Elevation A



B&W Elevation B



B&W Elevation C



Isometric view A



Rendered Elevation A



Rendered Elevation B



Rendered Elevation C



Isometric view B

Breastfeeding Stations



The breastfeeding stations are designed as intimate, soothing spaces that prioritize comfort, privacy, and dignity. Soft, calming colors, gentle lighting, and ergonomic seating create a nurturing environment where mothers can care for their babies in peace. Thoughtful design details, such as acoustic treatments and subtle zoning, ensure these areas feel both protected and welcoming. Integrated into the hospital's flow, the breastfeeding stations support the holistic needs of women, offering a space that acknowledges and celebrates this important aspect of motherhood.

Material Board



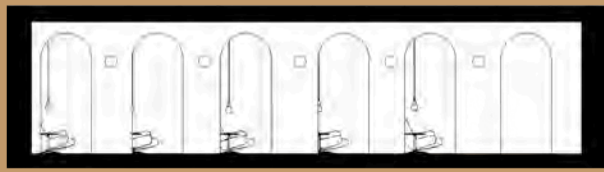
Mood Board



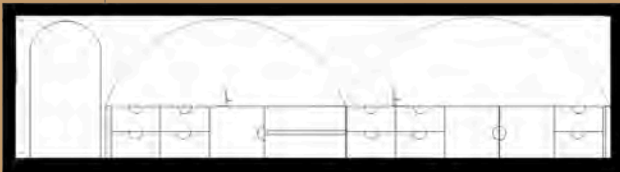
For the breastfeeding stations, I've selected materials that create a serene and private atmosphere. Soft, natural fabrics like linen and cotton for seating, paired with warm wood accents for furniture and wall details, will provide comfort. Sound-absorbing panels, subtly integrated and covered in gentle, muted tones, will enhance tranquility. The overall material palette focuses on natural textures and calming colors to ensure a nurturing environment.



Rendered Plan



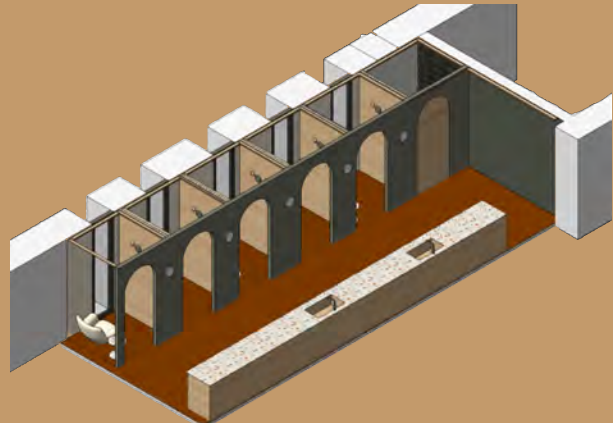
B&W Elevation A



B&W Elevation B



B&W Elevation C



Isometric view A



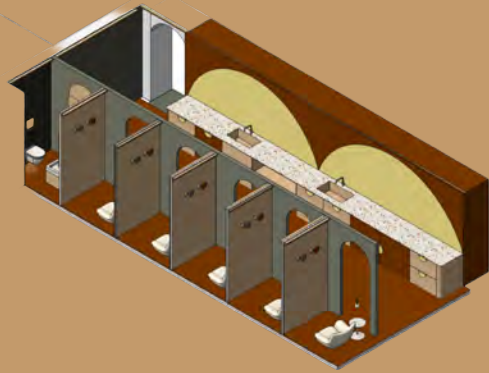
Rendered Elevation A



Rendered Elevation B



Rendered Elevation C



Isometric view B

Examination Room



The examination rooms are designed to foster a sense of calm, privacy, and respect, minimizing the clinical feel often associated with medical spaces. Soft, neutral palettes, warm materials, and diffused lighting are used to create a more comforting and less intimidating environment. The layout ensures both functionality and emotional comfort, allowing patients to feel safe and supported during consultations. This approach reflects the hospital's commitment to patient-centered care, where every space—clinical or not—contributes to the overall healing experience.

Material Board



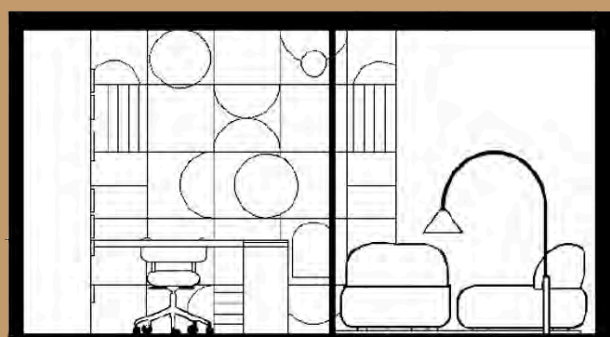
Mood Board



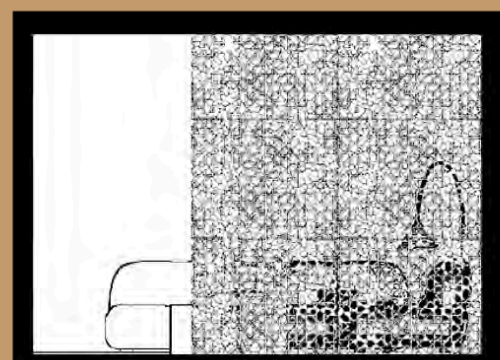
For the examination rooms, I've focused on materials that prioritize hygiene, durability, and patient comfort. Smooth, non-porous surfaces like solid-surface composites and specialized medical-grade laminates will be used for countertops and cabinetry, ensuring easy cleaning and infection control. Walls will feature washable, low-VOC paints in calming, muted tones to create a reassuring atmosphere. Seating and examination tables will be upholstered in medical-grade, antimicrobial vinyl, providing both comfort and ease of sanitation. The flooring will be seamless, slip-resistant vinyl for safety and hygiene.



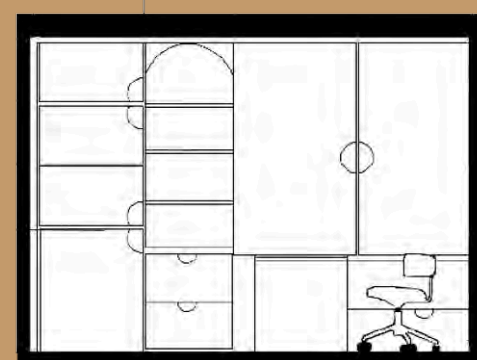
Rendered Plan



B&W Elevation A



B&W Elevation B



B&W Elevation C



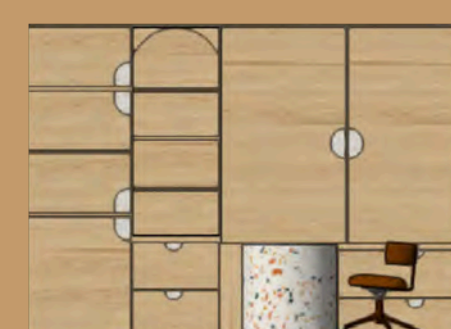
Isometric view A



Rendered Elevation A



Rendered Elevation B



Rendered Elevation C



Isometric view B

Counselling Room



The counselling rooms are conceived as safe, private sanctuaries designed to foster open dialogue, emotional support, and personal reflection. Soft textures, muted tones, and warm, indirect lighting create a serene and inviting atmosphere, reducing stress and promoting a sense of trust. The use of natural materials and minimal, uncluttered furnishings help maintain focus on human connection, ensuring patients feel heard, valued, and supported throughout their healing journey.

Material Board



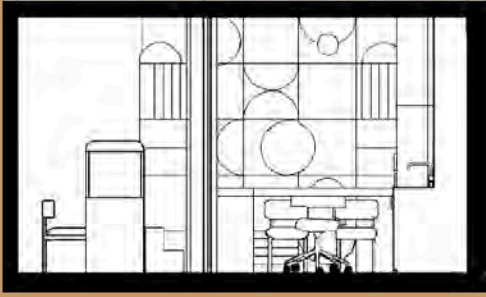
Mood Board



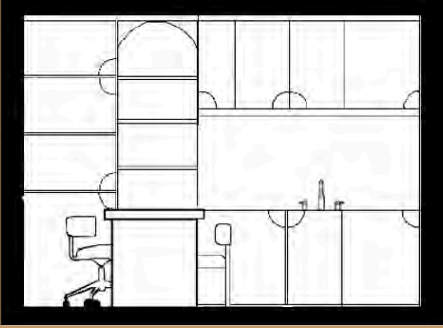
For the counselling rooms, the material selection focuses on fostering a deeply calm, private, and reassuring environment. Sound-absorbing materials, such as thick carpets or rugs and upholstered furniture, is be key to ensuring auditory privacy. Walls are finished with washable, matte paint in a soft, neutral beige as well as wood panelling to create a soothing visual backdrop that promotes relaxation without distraction.



Rendered Plan



B&W Elevation A



B&W Elevation B



B&W Elevation C



Isometric view A



Rendered Elevation A



Rendered Elevation B



Rendered Elevation C



Isometric view B

Patient Room



The patient refuge room offers a quiet, restorative space where women can retreat from the clinical environment to reconnect with themselves. Designed with soft lighting, natural textures, and calming colors, the space evokes a sense of safety and serenity. Thoughtfully positioned seating, sensory elements, and biophilic touches—such as plants and natural materials—encourage moments of reflection, mindfulness, or simply rest. This room supports the emotional wellbeing of patients, recognizing the importance of mental recovery alongside physical care.

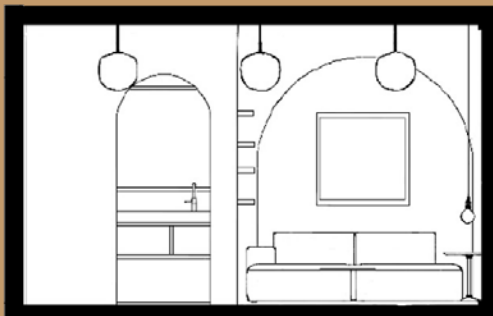
Material Board



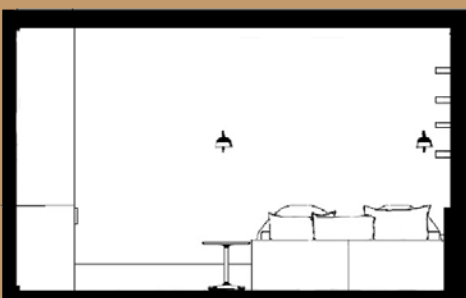
Mood Board



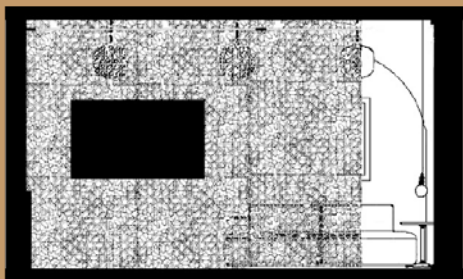
For patient rooms, materials prioritize hygiene, comfort, and a serene atmosphere. This means washable, non-porous surfaces like laminates for furniture, low-VOC paints in calming tones for walls, and seamless, slip-resistant vinyl flooring. Beds features durable upholstery, and window treatments are easily cleanable, light-filtering fabrics.



B&W Elevation A



B&W Elevation B



B&W Elevation C



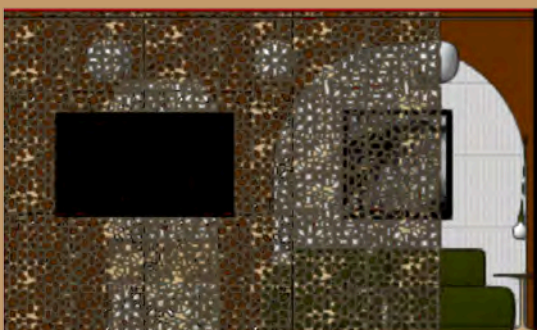
Isometric view A



Rendered Elevation A



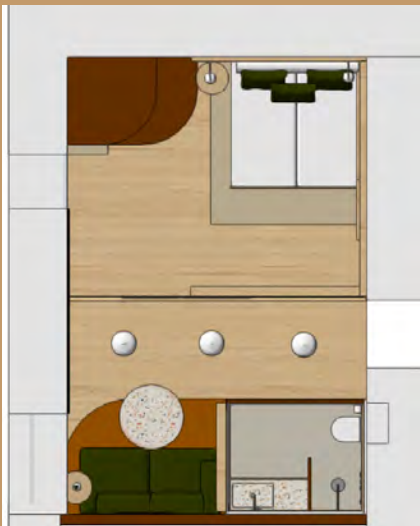
Rendered Elevation B



Rendered Elevation C



Isometric view B



Rendered Plan